

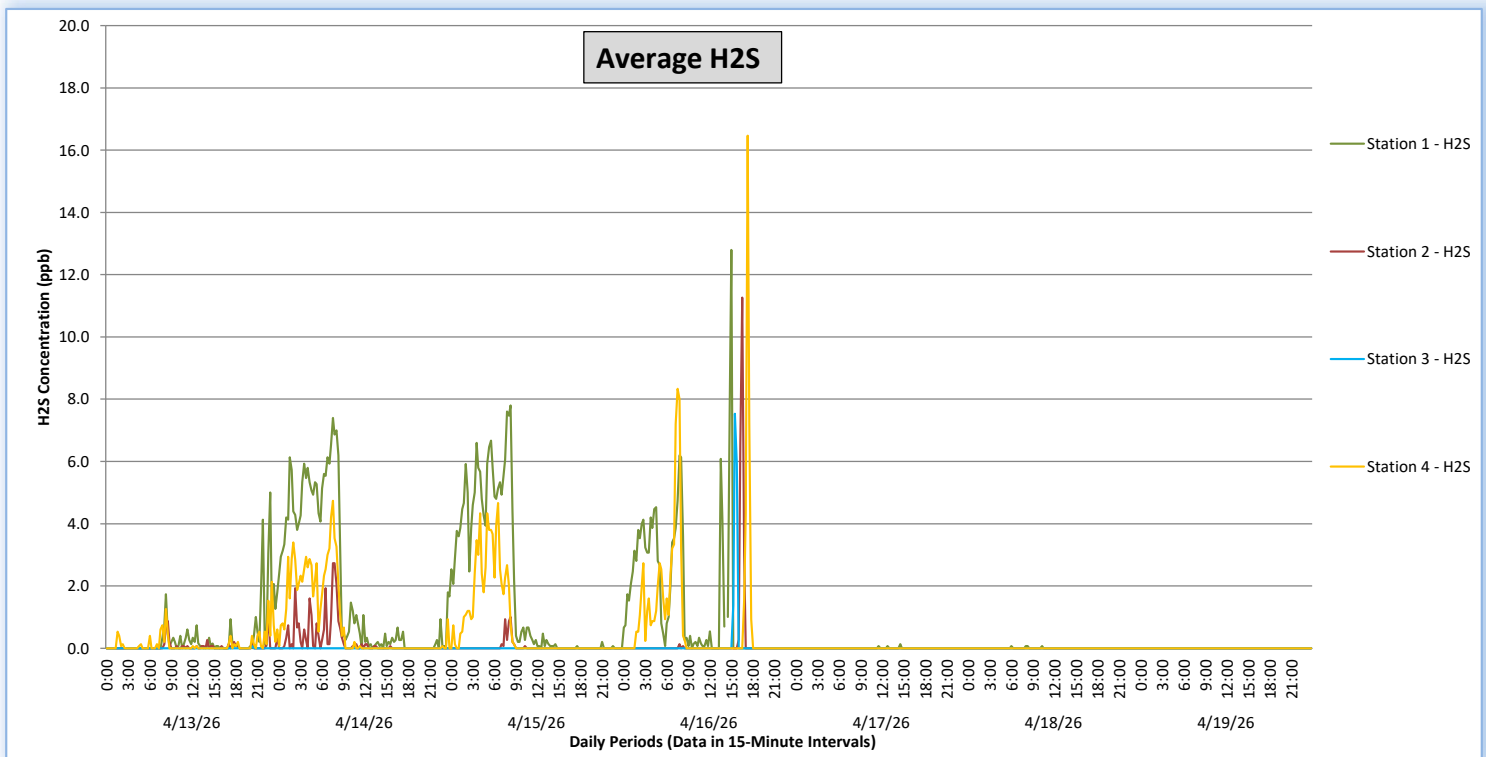
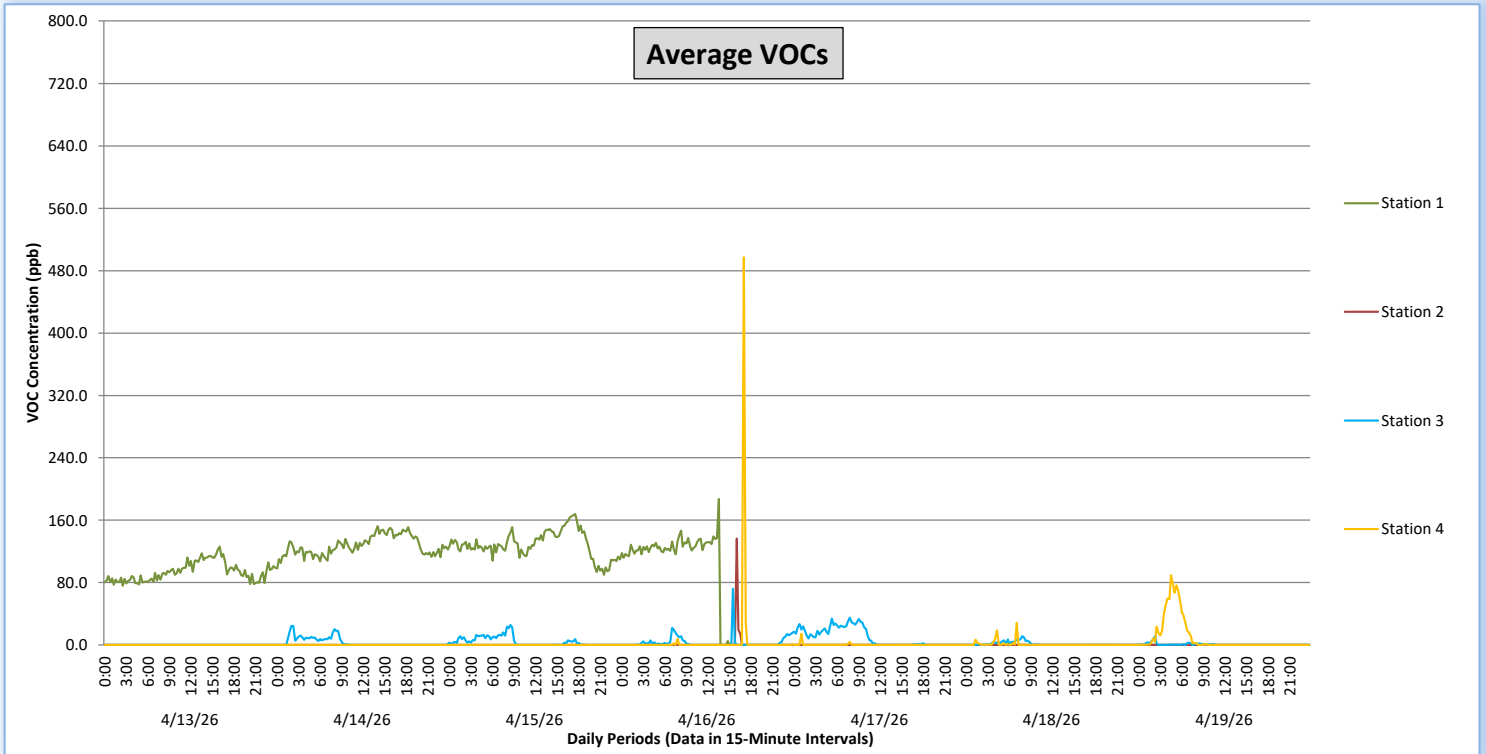


Perimeter Air Monitoring Weekly Report

Real-Time Multigas Monitoring
Bristol Landfill Air Investigation



April 13 - April 19, 2026



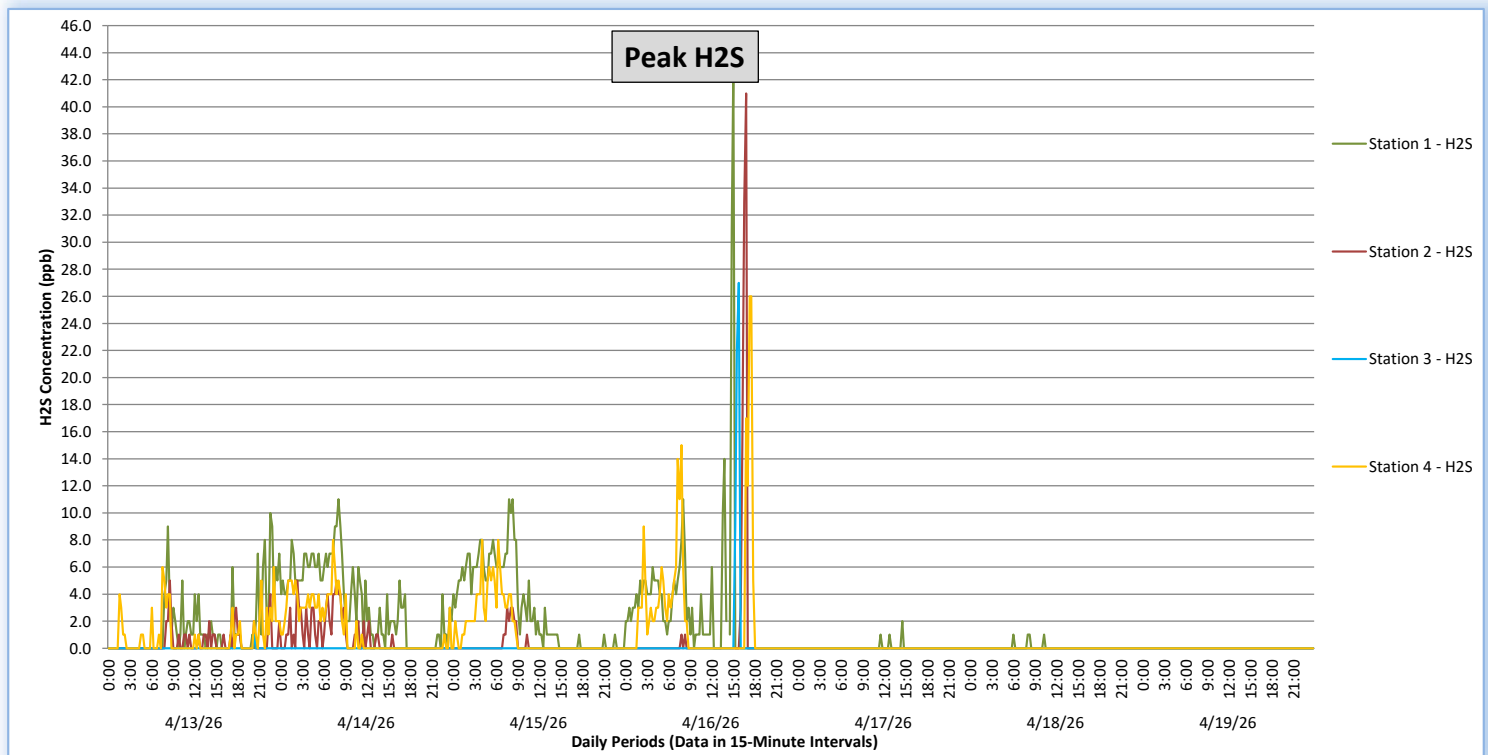
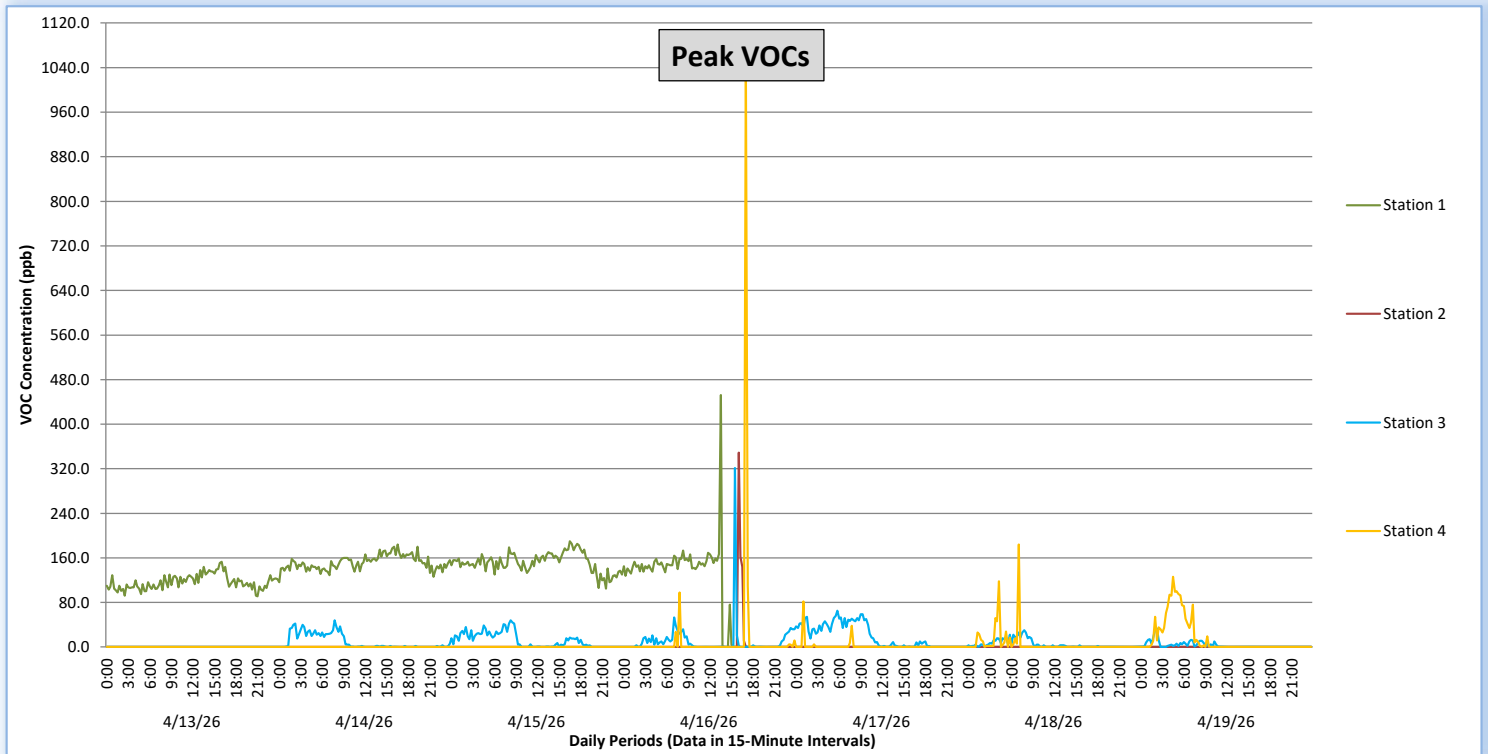
Perimeter Air Monitoring Weekly Report



Real-Time Multigas Monitoring
Bristol Landfill Air Investigation



April 13 - April 19, 2026





Perimeter Air Monitoring Weekly Report

Real-Time Multigas Monitoring
Bristol Landfill Air Investigation



April 13 - April 19, 2026

Date	Daily Statistics	Station 1				Station 2				Station 3				Station 4			
		VOCs		H2S		VOCs		H2S		VOCs		H2S		VOCs		H2S	
		Average ppb	Peak ppb	Average ppb	Peak ppb	Average ppb	Peak ppb	Average ppb	Peak ppb	Average ppb	Peak ppb	Average ppb	Peak ppb	Average ppb	Peak ppb	Average ppb	Peak ppb
		Values from 15-minute intervals	1-minute max within each 15-minute interval	Values from 15-minute intervals	1-minute max within each 15-minute interval	Values from 15-minute intervals	1-minute max within each 15-minute interval	Values from 15-minute intervals	1-minute max within each 15-minute interval	Values from 15-minute intervals	1-minute max within each 15-minute interval	Values from 15-minute intervals	1-minute max within each 15-minute interval	Values from 15-minute intervals	1-minute max within each 15-minute interval	Values from 15-minute intervals	1-minute max within each 15-minute interval
April 13, 2026	Minimum	76.1	91.0	0.0	0.0	0.0	0.0	0.0	0.0	0.0	0.0	0.0	0.0	0.0	0.0	0.0	0.0
	Maximum	126.1	153.0	5.0	10.0	0.0	0.0	1.1	5.0	0.1	1.0	0.1	1.0	0.0	0.0	2.1	6.0
	Average	93.7	116.6	0.3	1.5	0.0	0.0	0.1	0.4	0.0	0.0	0.0	0.0	0.0	0.0	0.1	0.8
April 14, 2026	Minimum	98.4	116.0	0.0	0.0	0.0	0.0	0.0	0.0	0.0	0.0	0.0	0.0	0.0	0.0	0.0	0.0
	Maximum	152.5	184.0	7.4	11.0	0.0	0.0	2.7	5.0	24.5	48.0	0.0	0.0	0.0	0.0	4.7	8.0
	Average	127.2	151.6	2.0	3.4	0.0	0.0	0.3	0.9	3.5	9.6	0.0	0.0	0.0	0.0	0.8	1.4
April 15, 2026	Minimum	90.1	105.0	0.0	0.0	0.0	0.0	0.0	0.0	0.0	0.0	0.0	0.0	0.0	0.0	0.0	0.0
	Maximum	168.0	190.0	7.8	11.0	0.0	0.0	1.0	3.0	25.5	48.0	0.0	0.0	0.0	0.0	4.7	8.0
	Average	128.9	151.9	1.9	2.9	0.0	0.0	0.0	0.2	4.4	12.0	0.0	0.0	0.0	0.0	0.7	1.2
April 16, 2026	Minimum	0.0	0.0	0.0	0.0	0.0	0.0	0.0	0.0	0.0	0.0	0.0	0.0	0.0	0.0	0.0	0.0
	Maximum	187.2	452.0	12.8	43.0	136.3	349.0	11.3	41.0	71.9	321.0	7.5	27.0	497.0	1,062.0	16.5	26.0
	Average	73.8	90.5	1.4	2.8	1.8	6.9	0.2	1.0	3.2	10.6	0.2	0.6	5.6	13.7	1.0	2.3
April 17, 2026	Minimum	0.0	0.0	0.0	0.0	0.0	0.0	0.0	0.0	0.0	0.0	0.0	0.0	0.0	0.0	0.0	0.0
	Maximum	0.0	0.0	0.1	2.0	0.0	0.0	0.0	0.0	35.0	65.0	0.0	0.0	14.7	82.0	0.0	0.0
	Average	0.0	0.0	0.0	0.0	0.0	0.0	0.0	0.0	9.7	19.8	0.0	0.0	0.2	1.4	0.0	0.0
April 18, 2026	Minimum	0.0	0.0	0.0	0.0	0.0	0.0	0.0	0.0	0.0	0.0	0.0	0.0	0.0	0.0	0.0	0.0
	Maximum	0.0	0.0	0.1	1.0	0.0	0.0	0.0	0.0	11.1	30.0	0.0	0.0	28.6	184.0	0.0	0.0
	Average	0.0	0.0	0.0	0.0	0.0	0.0	0.0	0.0	1.2	4.8	0.0	0.0	0.9	5.9	0.0	0.0
April 19, 2026	Minimum	0.0	0.0	0.0	0.0	0.0	0.0	0.0	0.0	0.0	0.0	0.0	0.0	0.0	0.0	0.0	0.0
	Maximum	0.0	0.0	0.0	0.0	0.0	0.0	0.0	0.0	11.1	33.0	0.0	0.0	89.5	126.0	0.0	0.0
	Average	0.0	0.0	0.0	0.0	0.0	0.0	0.0	0.0	0.6	3.1	0.0	0.0	9.3	15.5	0.0	0.0

Notes:

- o Data records with a dash indicate no data is available for that interval.
- o Calibration readings and data produced during periods of sensor downtime and/or maintenance are excluded from the report.
- o The 10.6 electron volt (eV) photoionization detector (PID) sensor can detect volatile organic compounds common to landfill gas, such as aromatics (benzene), which have ionization potentials below 10.6 eV.
- o The hydrogen sulfide (H2S) electrochemical sensor is susceptible to interference from other gases, particularly dimethylsulfide (DMS) and dimethyl disulfide (DMDS) or other total reduced sulfurs, which are the same compounds that may be responsible for nuisance odor complaints.
- o The full-scale range of the H2S electrochemical sensor is 1,000 ppb, resulting in an effective range between 10 ppb and 1000 ppb (MDL 1% of full scale). Readings outside of the effective range of the sensor are qualitative, not quantitative.
- o The full-scale range of the VOC electrochemical sensor is 10,000 ppb, resulting in an effective range between 100 ppb and 10,000 ppb (MDL 1% of full scale). Readings outside of the effective range of the sensor are qualitative, not quantitative.
- o Maintenance events were conducted 04/16/2026 as follows: Station 1 (1345–1445), Station 2 (1600–1700), Station 3 (1530–1600), and Station 4 (1700–1730). Although this data is included for transparency, the recorded values obtained during these intervals are not representative of actual ambient air concentrations.



Perimeter Air Monitoring Weekly Report

Real-Time Multigas Monitoring
Bristol Landfill Air Investigation



April 13 - April 19, 2026

Date	Daily Statistics	Bristol Met Station 1				
		Wind Direction degrees	Wind Speed mph	Temperature °F	Relative Humidity %	Barometric Pressure mbar
April 13, 2026	Minimum		0.6	60.7	32.2	954.7
	Maximum		5.6	74.9	63.0	958.1
	Average	237	2.0	68.1	42.6	956.3
April 14, 2026	Minimum		0.6	51.7	45.1	951.4
	Maximum		5.6	78.0	80.7	955.5
	Average	247	1.0	65.9	60.2	953.7
April 15, 2026	Minimum		0.2	55.1	31.8	949.7
	Maximum		6.1	83.1	78.3	954.1
	Average	230	1.2	70.1	51.2	951.8
April 16, 2026	Minimum		0.4	58.4	35.3	946.8
	Maximum		7.2	80.5	89.8	952.5
	Average	229	2.6	69.1	58.7	950.0
April 17, 2026	Minimum		0.1	56.4	36.9	948.3
	Maximum		3.8	78.5	94.0	952.3
	Average	223	1.1	65.8	69.3	950.0
April 18, 2026	Minimum		0.7	52.8	39.4	944.6
	Maximum		6.9	80.9	82.6	949.2
	Average	284	1.1	68.0	60.3	947.3
April 19, 2026	Minimum		0.5	41.0	23.1	946.7
	Maximum		8.2	64.0	90.2	955.1
	Average	317	2.5	50.2	58.0	952.3

Notes:

- o Dash/Blank data records indicate no data is available for that interval.
- o Wind direction is a daily (24-hr) average value; with the origin of wind in degrees; clockwise from North calculated with vector averaging.