

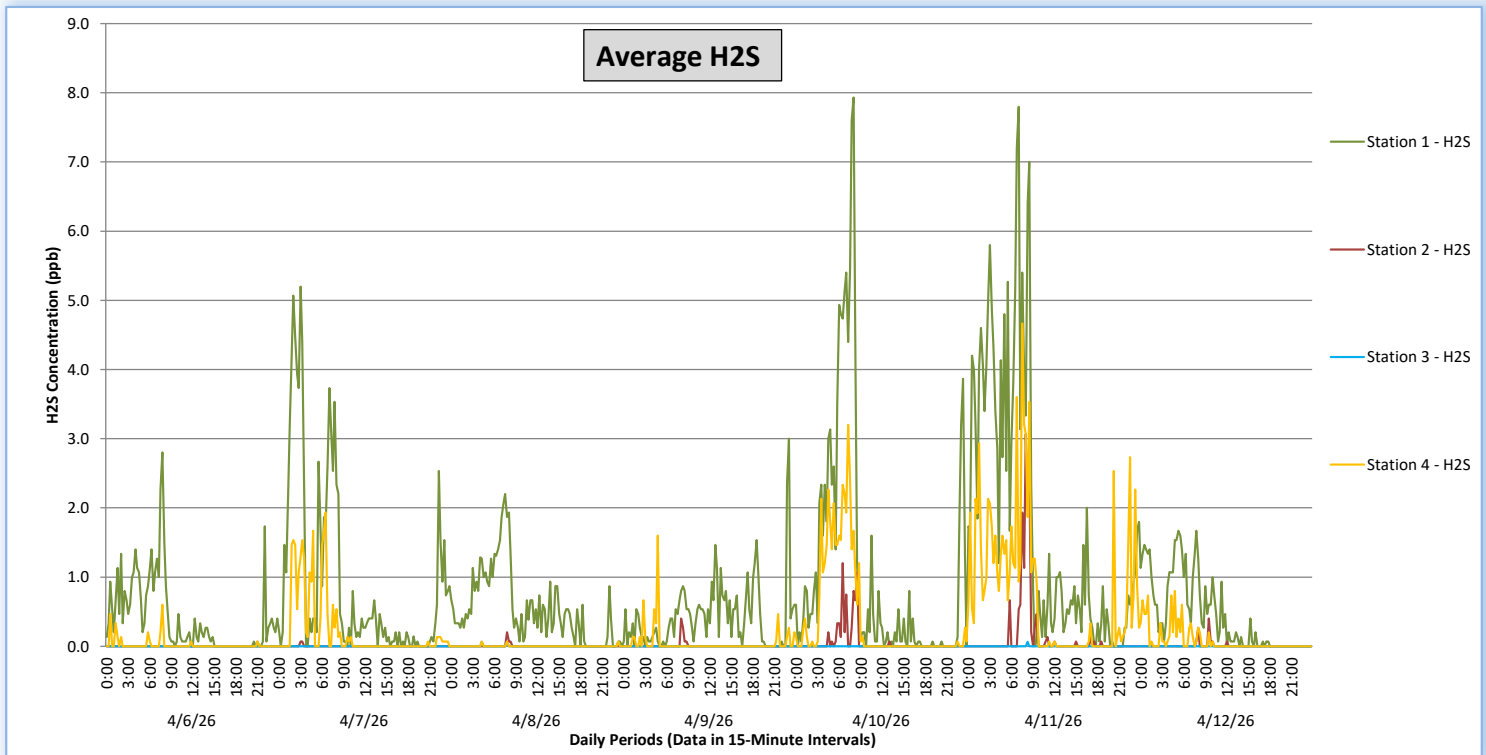
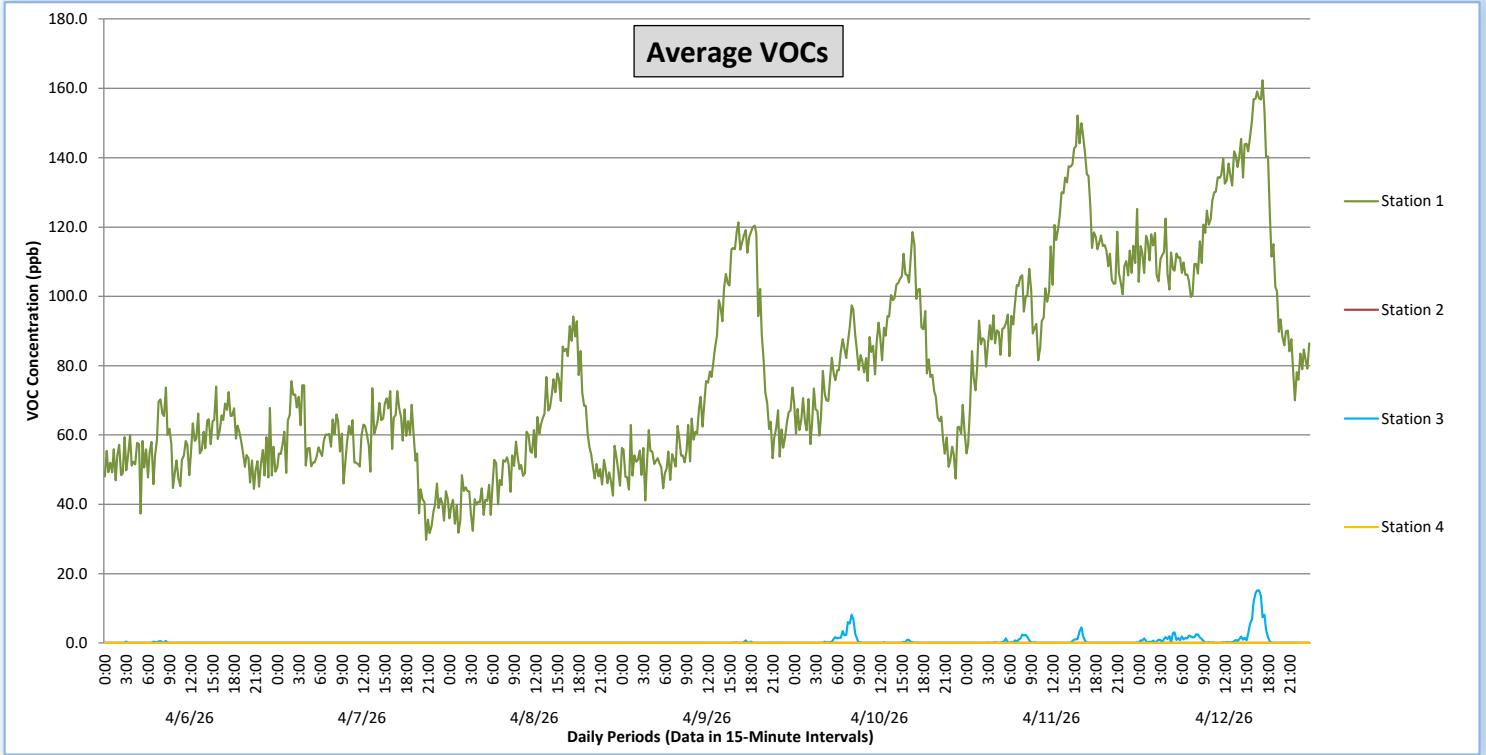


Perimeter Air Monitoring Weekly Report

Real-Time Multigas Monitoring
Bristol Landfill Air Investigation



April 06 - April 12, 2026



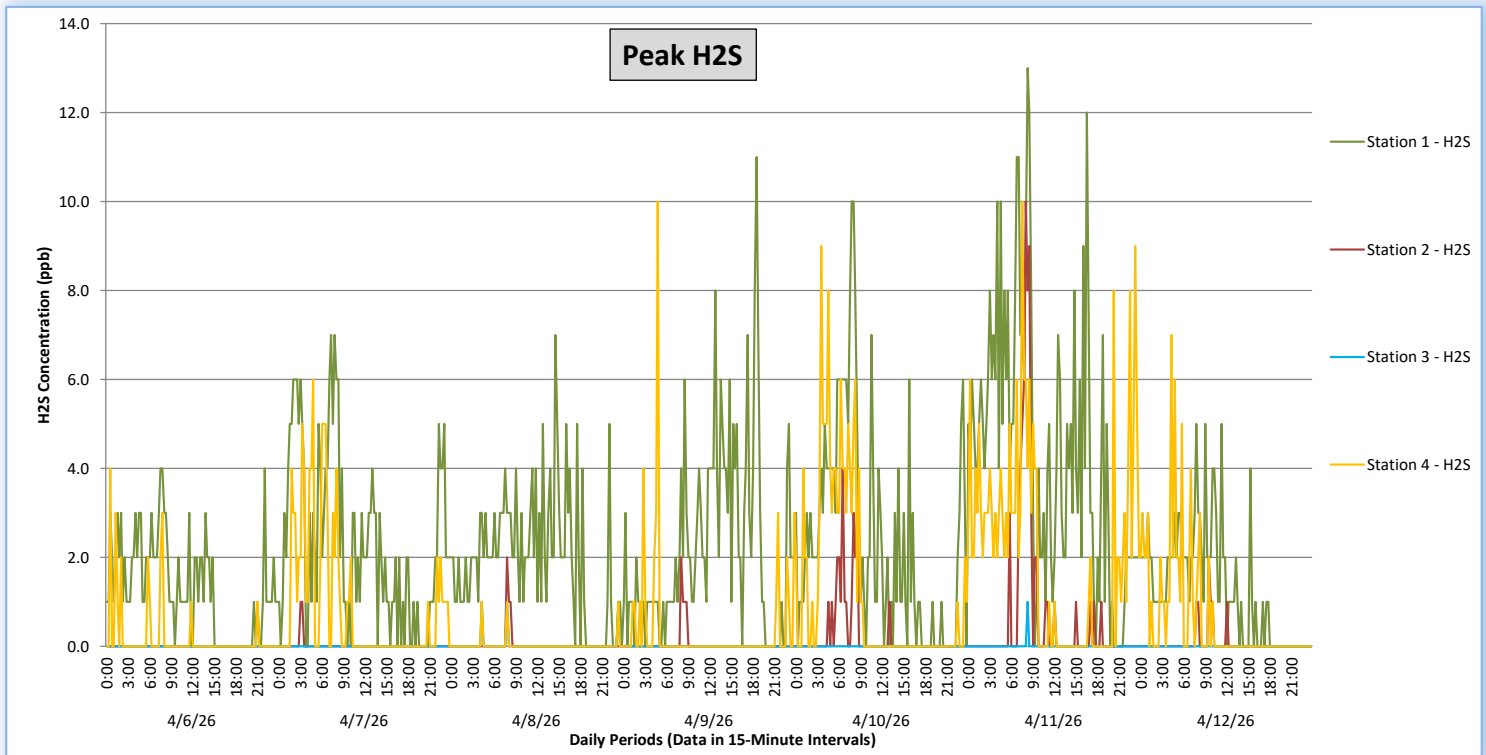
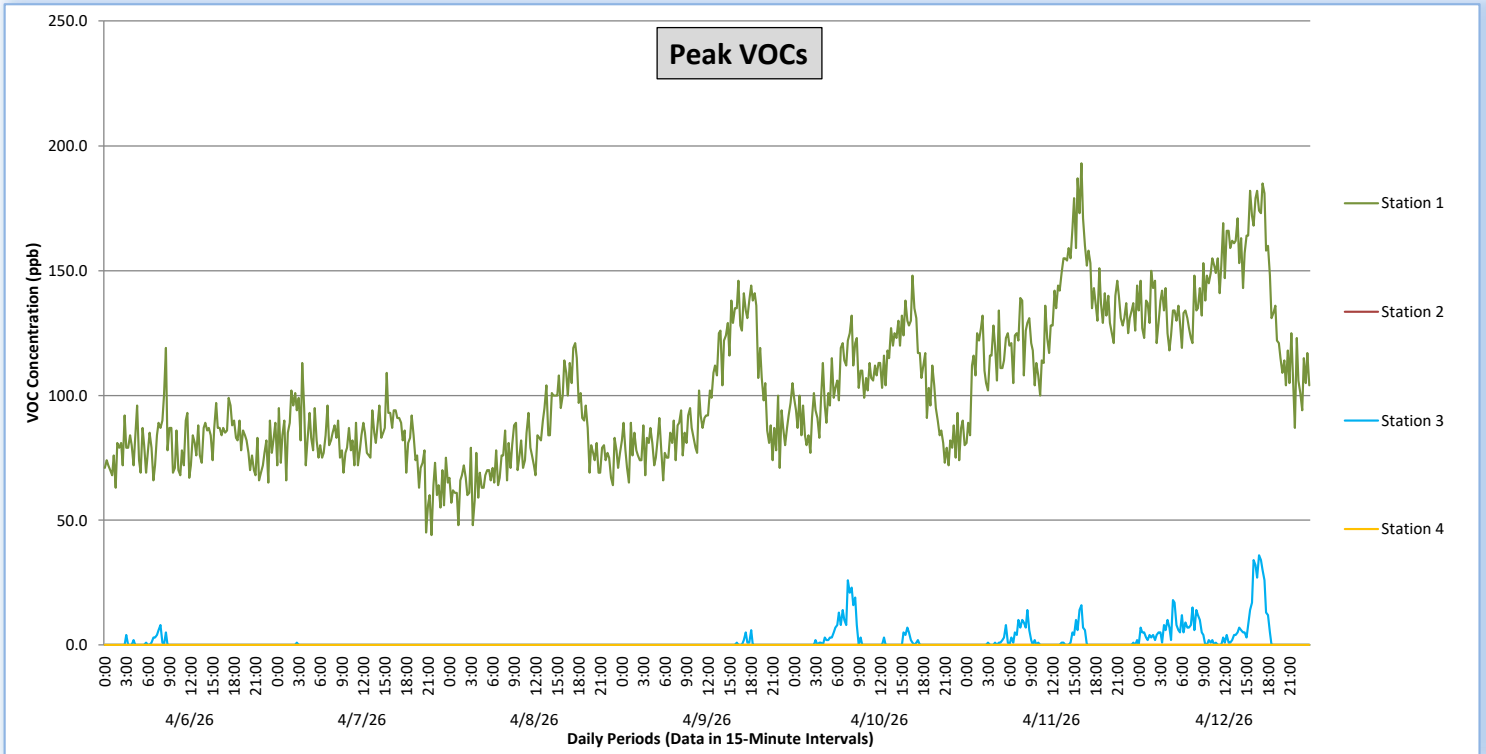


Perimeter Air Monitoring Weekly Report

Real-Time Multigas Monitoring
Bristol Landfill Air Investigation



April 06 - April 12, 2026





Perimeter Air Monitoring Weekly Report

Real-Time Multigas Monitoring
Bristol Landfill Air Investigation



April 06 - April 12, 2026

Date	Daily Statistics	Station 1				Station 2				Station 3				Station 4			
		VOCs		H2S		VOCs		H2S		VOCs		H2S		VOCs		H2S	
		Average ppb	Peak ppb	Average ppb	Peak ppb	Average ppb	Peak ppb	Average ppb	Peak ppb	Average ppb	Peak ppb	Average ppb	Peak ppb	Average ppb	Peak ppb	Average ppb	Peak ppb
		Values from 15-minute intervals	1-minute max within each 15-minute interval	Values from 15-minute intervals	1-minute max within each 15-minute interval	Values from 15-minute intervals	1-minute max within each 15-minute interval	Values from 15-minute intervals	1-minute max within each 15-minute interval	Values from 15-minute intervals	1-minute max within each 15-minute interval	Values from 15-minute intervals	1-minute max within each 15-minute interval	Values from 15-minute intervals	1-minute max within each 15-minute interval	Values from 15-minute intervals	1-minute max within each 15-minute interval
April 6, 2026	Minimum	37.3	63.0	0.0	0.0	0.0	0.0	0.0	0.0	0.0	0.0	0.0	0.0	0.0	0.0	0.0	0.0
	Maximum	74.0	119.0	2.8	4.0	0.0	0.0	0.0	0.0	0.6	8.0	0.0	0.0	0.0	0.0	0.6	4.0
	Average	56.5	80.7	0.4	1.3	0.0	0.0	0.0	0.0	0.0	0.4	0.0	0.0	0.0	0.0	0.0	0.2
April 7, 2026	Minimum	29.7	44.0	0.0	0.0	0.0	0.0	0.0	0.0	0.0	0.0	0.0	0.0	0.0	0.0	0.0	0.0
	Maximum	75.6	113.0	5.2	7.0	0.0	0.0	0.1	1.0	0.1	1.0	0.0	0.0	0.0	0.0	1.9	6.0
	Average	57.0	81.0	0.9	2.4	0.0	0.0	0.0	0.0	0.0	0.0	0.0	0.0	0.0	0.0	0.2	0.9
April 8, 2026	Minimum	31.8	48.0	0.0	0.0	0.0	0.0	0.0	0.0	0.0	0.0	0.0	0.0	0.0	0.0	0.0	0.0
	Maximum	94.2	121.0	2.2	7.0	0.0	0.0	0.2	2.0	0.0	0.0	0.1	1.0	0.0	0.0	0.1	1.0
	Average	55.8	79.8	0.5	1.9	0.0	0.0	0.0	0.0	0.0	0.0	0.0	0.0	0.0	0.0	0.0	0.0
April 9, 2026	Minimum	41.1	65.0	0.0	0.0	0.0	0.0	0.0	0.0	0.0	0.0	0.0	0.0	0.0	0.0	0.0	0.0
	Maximum	121.3	146.0	3.0	11.0	0.0	0.0	0.4	2.0	0.7	6.0	0.0	0.0	0.0	0.0	1.6	10.0
	Average	72.7	96.8	0.4	2.3	0.0	0.0	0.0	0.1	0.0	0.2	0.0	0.0	0.0	0.0	0.1	0.3
April 10, 2026	Minimum	47.4	72.0	0.0	0.0	0.0	0.0	0.0	0.0	0.0	0.0	0.0	0.0	0.0	0.0	0.0	0.0
	Maximum	118.5	148.0	7.9	10.0	0.0	0.0	1.2	4.0	8.1	26.0	0.0	0.0	0.0	0.0	3.2	9.0
	Average	80.1	104.6	1.1	2.4	0.0	0.0	0.1	0.3	0.5	2.5	0.0	0.0	0.0	0.0	0.4	1.2
April 11, 2026	Minimum	54.7	81.0	0.0	0.0	0.0	0.0	0.0	0.0	0.0	0.0	0.0	0.0	0.0	0.0	0.0	0.0
	Maximum	152.2	193.0	7.8	13.0	0.0	0.0	3.1	10.0	4.5	16.0	0.1	1.0	0.0	0.0	4.7	10.0
	Average	106.0	130.9	1.8	4.3	0.0	0.0	0.1	0.6	0.3	1.8	0.0	0.0	0.0	0.0	0.8	2.1
April 12, 2026	Minimum	70.0	87.0	0.0	0.0	0.0	0.0	0.0	0.0	0.0	0.0	0.0	0.0	0.0	0.0	0.0	0.0
	Maximum	162.3	185.0	1.7	5.0	0.0	0.0	0.4	2.0	15.2	36.0	0.0	0.0	0.0	0.0	0.8	7.0
	Average	116.4	139.4	0.4	1.3	0.0	0.0	0.0	0.1	1.7	6.2	0.0	0.0	0.0	0.0	0.1	0.6

Notes:

- o Data records with a dash indicate no data is available for that interval.
- o Calibration readings and data produced during periods of sensor downtime and/or maintenance are excluded from the report.
- o The 10.6 electron volt (eV) photoionization detector (PID) sensor can detect volatile organic compounds common to landfill gas, such as aromatics (benzene), which have ionization potentials below 10.6 eV.
- o The hydrogen sulfide (H2S) electrochemical sensor is susceptible to interference from other gases, particularly dimethylsulfide (DMS) and dimethyl disulfide (DMDS) or other total reduced sulfurs, which are the same compounds that may be responsible for nuisance odor complaints.
- o The full-scale range of the H2S electrochemical sensor is 1,000 ppb, resulting in an effective range between 10 ppb and 1000 ppb (MDL 1% of full scale). Readings outside of the effective range of the sensor are qualitative, not quantitative.
- o The full-scale range of the VOC electrochemical sensor is 10,000 ppb, resulting in an effective range between 100 ppb and 10,000 ppb (MDL 1% of full scale). Readings outside of the effective range of the sensor are qualitative, not quantitative.



Perimeter Air Monitoring Weekly Report

Real-Time Multigas Monitoring
Bristol Landfill Air Investigation



April 06 - April 12, 2026

Date	Daily Statistics	Bristol Met Station 1				
		Wind Direction degrees	Wind Speed mph	Temperature °F	Relative Humidity %	Barometric Pressure mbar
April 6, 2026	Minimum		0.2	39.2	31.8	952.2
	Maximum		6.0	62.2	70.4	956.5
	Average	278	1.5	50.6	50.4	954.4
April 7, 2026	Minimum		0.2	43.6	23.8	953.8
	Maximum		7.9	60.8	65.9	958.1
	Average	5	3.2	52.2	39.1	956.4
April 8, 2026	Minimum		0.8	41.7	26.2	957.7
	Maximum		8.1	66.3	49.1	961.1
	Average	56	4.2	53.1	35.3	959.3
April 9, 2026	Minimum		0.8	41.3	28.0	958.0
	Maximum		5.5	72.6	51.0	963.0
	Average	44	2.1	56.7	38.4	960.4
April 10, 2026	Minimum		0.1	42.3	20.3	956.7
	Maximum		4.9	72.8	66.8	961.1
	Average	280	0.9	60.0	38.4	958.8
April 11, 2026	Minimum		0.5	48.4	32.6	956.6
	Maximum		5.3	77.3	64.6	959.5
	Average	343	0.6	63.1	45.3	957.9
April 12, 2026	Minimum		1.5	54.7	26.6	954.9
	Maximum		6.9	82.6	70.5	959.1
	Average	267	0.3	69.2	45.2	957.1

Notes:

- o Dash/Blank data records indicate no data is available for that interval.
- o Wind direction is a daily (24-hr) average value; with the origin of wind in degrees; clockwise from North calculated with vector averaging.