

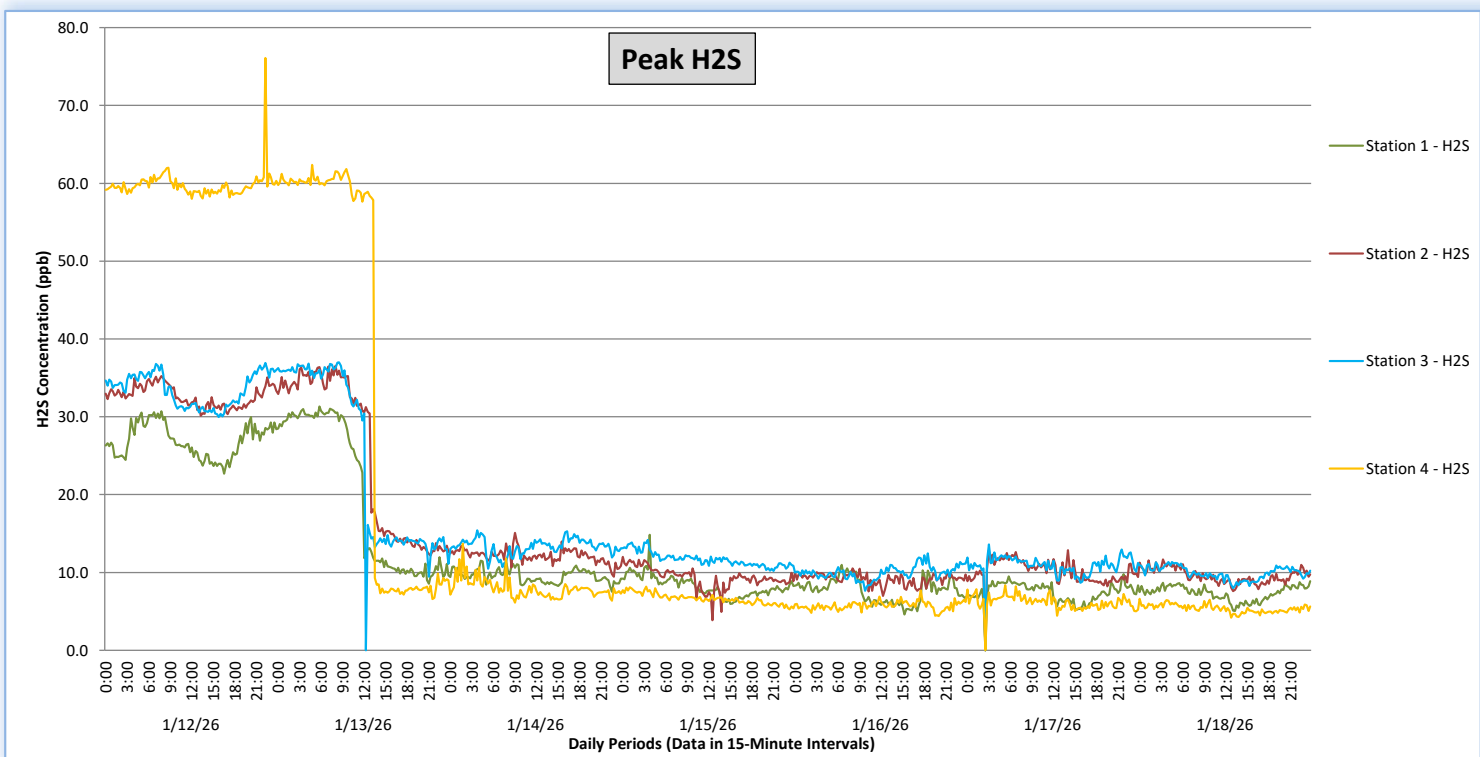
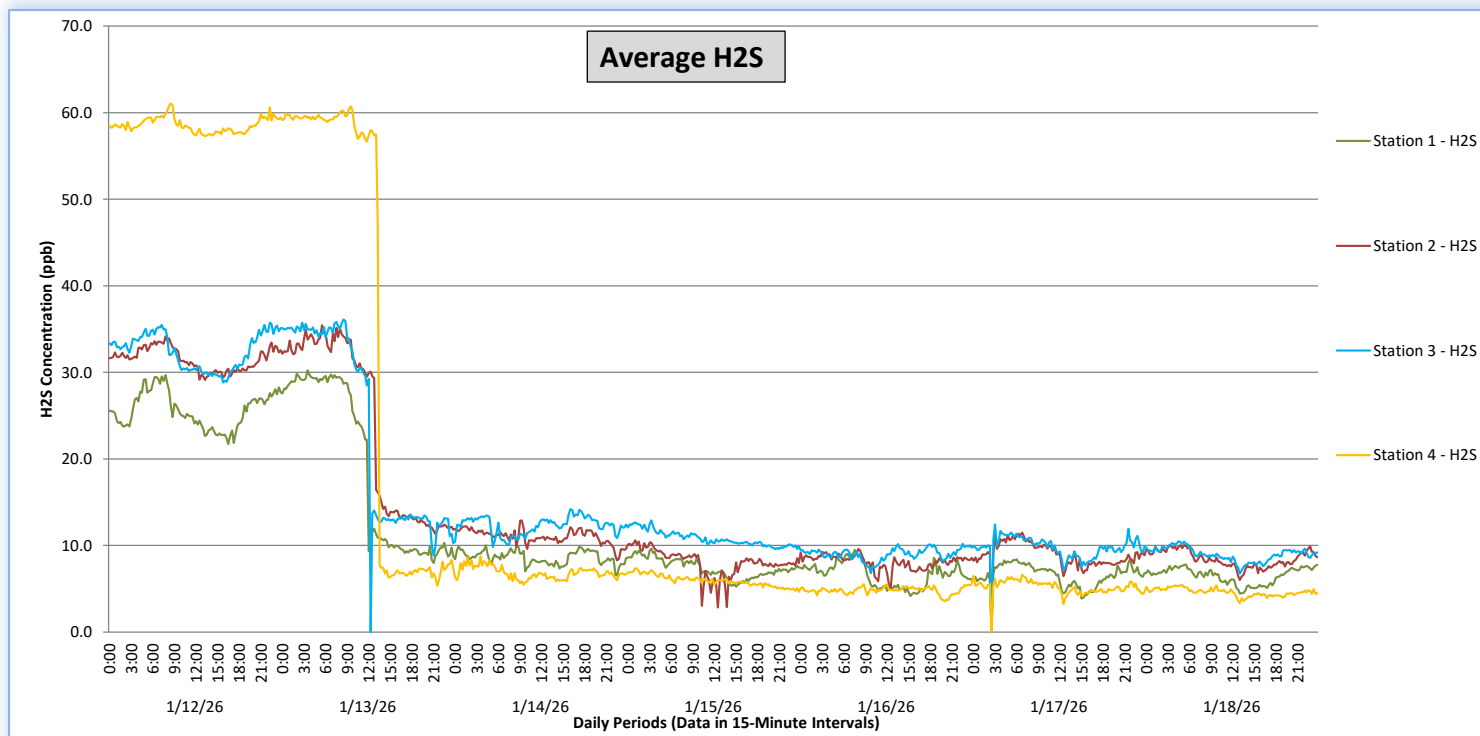


Perimeter Air Monitoring Weekly Report

Real-Time Multigas Monitoring
Bristol Landfill Air Investigation



January 12 - January 18, 2026





Perimeter Air Monitoring Weekly Report

Real-Time Multigas Monitoring
Bristol Landfill Air Investigation



January 12 - January 18, 2026

Date	Daily Statistics	Station 1		Station 2		Station 3		Station 4	
		H2S		H2S		H2S		H2S	
		Average ppb	Peak ppb	Average ppb	Peak ppb	Average ppb	Peak ppb	Average ppb	Peak ppb
		Values from 15-minute intervals	1-minute max within each 15-minute interval	Values from 15-minute intervals	1-minute max within each 15-minute interval	Values from 15-minute intervals	1-minute max within each 15-minute interval	Values from 15-minute intervals	1-minute max within each 15-minute interval
January 12, 2026	Minimum	21.7	22.7	29.1	30.1	28.8	30.0	57.3	58.0
	Maximum	29.7	30.7	34.1	35.2	35.7	36.9	61.1	76.1
	Average	25.6	26.9	31.5	32.7	32.4	33.5	58.6	59.8
January 13, 2026	Minimum	8.0	8.5	11.4	12.2	8.8	9.5	5.4	6.6
	Maximum	30.2	31.3	35.4	36.6	36.1	37.0	60.7	62.4
	Average	18.9	19.9	23.8	25.0	23.7	24.8	36.2	37.2
January 14, 2026	Minimum	6.5	7.5	8.3	9.5	9.8	10.5	5.4	6.1
	Maximum	10.0	11.5	12.9	15.1	14.2	15.4	8.7	13.7
	Average	8.6	9.6	11.0	12.2	12.3	13.3	6.8	7.9
January 15, 2026	Minimum	5.2	5.9	2.8	3.8	9.6	10.2	4.6	5.2
	Maximum	9.6	14.8	10.6	12.0	12.9	14.2	7.4	8.2
	Average	7.4	8.2	8.0	9.3	10.8	11.7	5.9	6.6
January 16, 2026	Minimum	4.2	4.6	5.1	7.0	6.8	7.6	3.5	4.4
	Maximum	9.5	11.0	9.6	10.5	10.2	12.4	5.5	7.7
	Average	6.6	7.7	8.1	9.2	9.0	10.0	4.8	5.7
January 17, 2026	Minimum	3.9	5.2	6.5	8.2	7.2	8.7	3.2	4.5
	Maximum	8.4	9.8	11.5	12.9	12.5	13.6	6.6	8.3
	Average	6.6	7.5	9.0	10.2	9.8	11.0	5.2	6.2
January 18, 2026	Minimum	4.5	5.1	6.0	7.6	6.8	8.0	3.3	4.2
	Maximum	7.8	8.9	10.1	11.7	10.5	11.3	5.4	6.6
	Average	6.5	7.3	8.4	9.6	9.0	9.9	4.6	5.4

Notes:

- o Data records with a dash indicate no data is available for that interval.
- o Calibration readings and data produced during periods of sensor downtime and/or maintenance are excluded from the report.
- o The 10.6 electron volt (eV) photoionization detector (PID) sensor can detect volatile organic compounds common to landfill gas, such as aromatics (benzene), which have ionization potentials below 10.6 eV.
- o The hydrogen sulfide (H2S) electrochemical sensor measures in the 0-1000 ppb range, though readings below the 10-ppb minimum detection limit are considered estimates. It is important to note that the sensor is susceptible to interference from other gases, particularly dimethylsulfide (DMS) and dimethyl disulfide (DMDS) or other total reduced sulfurs, which are the same compounds that may be responsible for nuisance odor complaints.
- o A scheduled maintenance outage began at approximately 11:55 on 01/13 and concluded at 13:30 on 01/13



Perimeter Air Monitoring Weekly Report

Real-Time Multigas Monitoring Bristol Landfill Air Investigation



January 12 - January 18, 2026

Date	Daily Statistics	Bristol Met Station 1				
		Wind Direction	Wind Speed	Temperature	Relative Humidity	Barometric Pressure
		degrees	mph	°F	%	mbar
January 12, 2026	Minimum		0.8	18.4	39.2	955.9
	Maximum		4.4	41.0	86.7	961.2
	Average	226	1.4	29.2	62.8	958.7
January 13, 2026	Minimum		0.4	22.6	33.2	943.9
	Maximum		6.2	49.0	84.4	955.8
	Average	213	0.8	36.3	56.5	950.4
January 14, 2026	Minimum		0.1	29.9	46.7	933.9
	Maximum		10.2	50.0	91.0	943.8
	Average	244	2.6	40.9	60.8	938.3
January 15, 2026	Minimum		1.1	15.1	47.0	938.5
	Maximum		6.7	29.3	75.1	945.5
	Average	283	3.5	21.7	58.3	941.6
January 16, 2026	Minimum		0.3	12.8	21.0	942.9
	Maximum		4.7	44.7	81.9	947.7
	Average	218	1.0	27.5	51.8	945.5
January 17, 2026	Minimum		0.6	33.5	38.0	944.2
	Maximum		8.2	44.5	94.0	949.9
	Average	229	2.4	38.5	67.1	948.0
January 18, 2026	Minimum		1.1	23.4	36.4	945.7
	Maximum		7.0	36.1	75.5	949.5
	Average	266	2.6	29.1	57.8	947.7

Notes:

- o Dash/Blank data records indicate no data is available for that interval.
- o Wind direction is a daily (24-hr) average value; with the origin of wind in degrees; clockwise from North calculated with vector averaging.