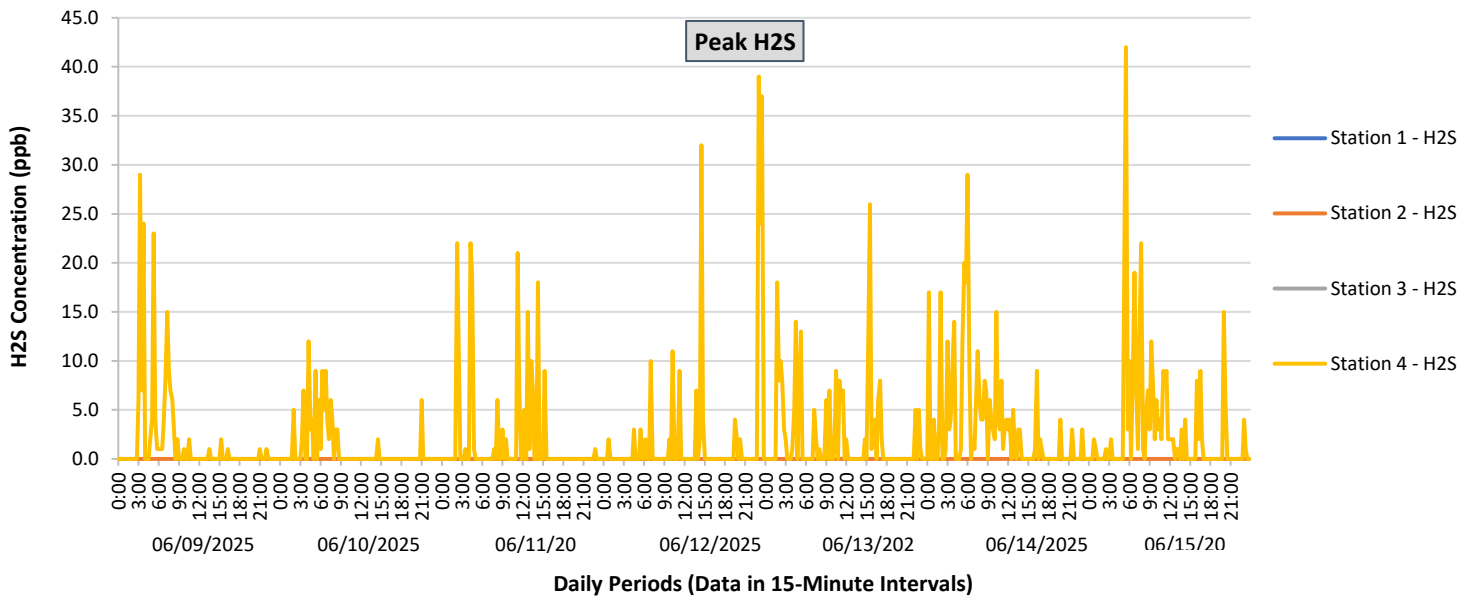
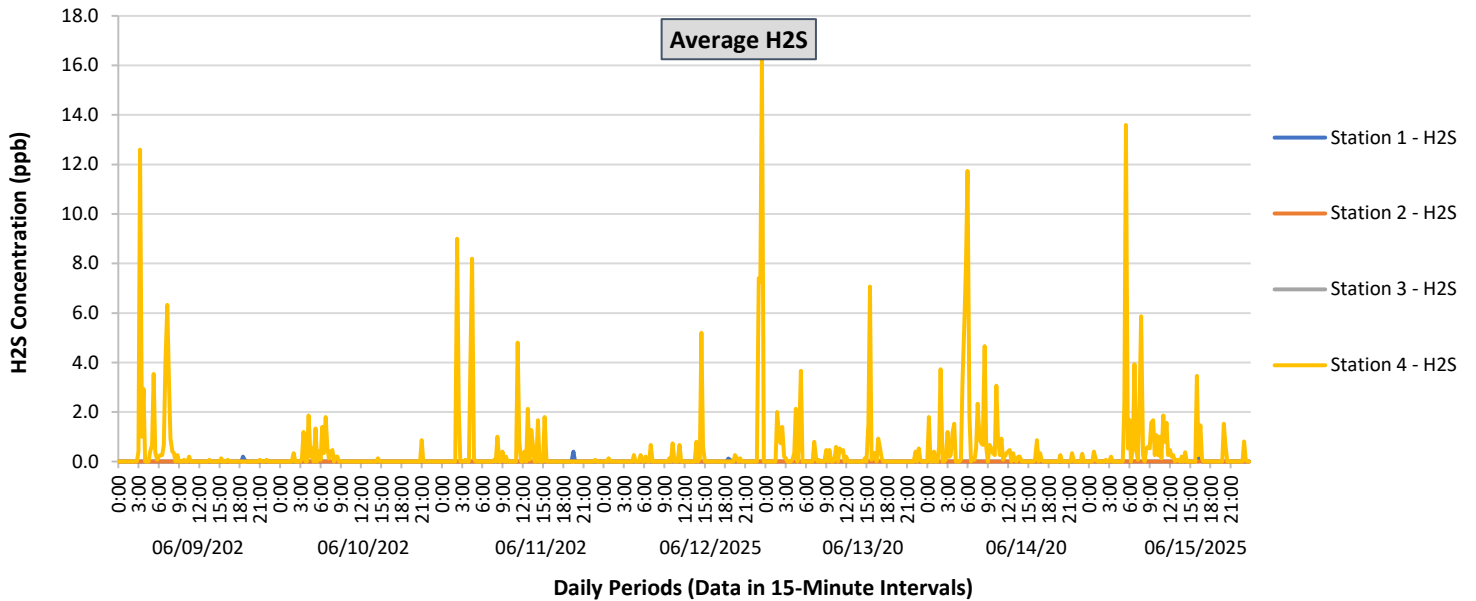




Perimeter Air Monitoring Weekly Report

Real-Time Multigas Monitoring
Bristol Landfill Air Investigation

June 9 - June 15, 2025





Perimeter Air Monitoring Weekly Report

Real-Time Multigas Monitoring
Bristol Landfill Air Investigation
June 9 - June 15, 2025

| Date | Daily Statistics | Station 1 | | | | | | Station 2 | | | | | | Station 3 | | | | | | Station 4 | | | | | |
|---------------|------------------|----------------------------------|---|----------------------------------|---|----------------------------------|---|----------------------------------|---|----------------------------------|---|----------------------------------|---|----------------------------------|---|----------------------------------|---|----------------------------------|---|----------------------------------|---|----------------------------------|---|----------------------------------|---|
| | | TVOCs | | H2S | | Benzene | | TVOCs | | H2S | | Benzene | | TVOCs | | H2S | | Benzene | | TVOCs | | H2S | | Benzene | |
| | | Average ppb | Peak ppb | Average ppb | Peak ppb | Average ppb | Peak ppb | Average ppb | Peak ppb | Average ppb | Peak ppb | Average ppb | Peak ppb | Average ppb | Peak ppb | Average ppb | Peak ppb | Average ppb | Peak ppb | Average ppb | Peak ppb | Average ppb | Peak ppb | Average ppb | Peak ppb |
| | | Values from 15-minute intervals. | 1-minute max within each 15 minute interval | Values from 15-minute intervals. | 1-minute max within each 15 minute interval | Values from 15-minute intervals. | 1-minute max within each 15 minute interval | Values from 15-minute intervals. | 1-minute max within each 15 minute interval | Values from 15-minute intervals. | 1-minute max within each 15 minute interval | Values from 15-minute intervals. | 1-minute max within each 15 minute interval | Values from 15-minute intervals. | 1-minute max within each 15 minute interval | Values from 15-minute intervals. | 1-minute max within each 15 minute interval | Values from 15-minute intervals. | 1-minute max within each 15 minute interval | Values from 15-minute intervals. | 1-minute max within each 15 minute interval | Values from 15-minute intervals. | 1-minute max within each 15 minute interval | Values from 15-minute intervals. | 1-minute max within each 15 minute interval |
| June 9, 2025 | Minimum | - | - | 0.0 | 0.0 | - | - | - | - | 0.0 | 0.0 | - | - | - | - | - | - | - | - | - | - | 0.0 | 0.0 | - | - |
| | Maximum | - | - | 0.2 | 3.0 | - | - | - | - | 0.0 | 0.0 | - | - | - | - | - | - | - | - | - | - | 12.6 | 29.0 | - | - |
| | Average | - | - | 0.0 | 0.0 | - | - | - | - | 0.0 | 0.0 | - | - | - | - | - | - | - | - | - | - | 0.4 | 1.7 | - | - |
| June 10, 2025 | Minimum | - | - | 0.0 | 0.0 | - | - | - | - | 0.0 | 0.0 | - | - | - | - | - | - | - | - | - | - | 0.0 | 0.0 | - | - |
| | Maximum | - | - | 0.0 | 0.0 | - | - | - | - | 0.0 | 0.0 | - | - | - | - | - | - | - | - | - | - | 1.9 | 12.0 | - | - |
| | Average | - | - | 0.0 | 0.0 | - | - | - | - | 0.0 | 0.0 | - | - | - | - | - | - | - | - | - | - | 0.1 | 1.1 | - | - |
| June 11, 2025 | Minimum | - | - | 0.0 | 0.0 | - | - | - | - | 0.0 | 0.0 | - | - | - | - | - | - | - | - | - | - | 0.0 | 0.0 | - | - |
| | Maximum | - | - | 0.4 | 6.0 | - | - | - | - | 0.0 | 0.0 | - | - | - | - | - | - | - | - | - | - | 9.0 | 22.0 | - | - |
| | Average | - | - | 0.0 | 0.1 | - | - | - | - | 0.0 | 0.0 | - | - | - | - | - | - | - | - | - | - | 0.4 | 1.9 | - | - |
| June 12, 2025 | Minimum | - | - | 0.0 | 0.0 | - | - | - | - | 0.0 | 0.0 | - | - | - | - | - | - | - | - | - | - | 0.0 | 0.0 | - | - |
| | Maximum | - | - | 0.1 | 2.0 | - | - | - | - | 0.0 | 0.0 | - | - | - | - | - | - | - | - | - | - | 16.4 | 39.0 | - | - |
| | Average | - | - | 0.0 | 0.0 | - | - | - | - | 0.0 | 0.0 | - | - | - | - | - | - | - | - | - | - | 0.4 | 2.0 | - | - |
| June 13, 2025 | Minimum | - | - | 0.0 | 0.0 | - | - | - | - | 0.0 | 0.0 | - | - | - | - | - | - | - | - | - | - | 0.0 | 0.0 | - | - |
| | Maximum | - | - | 0.0 | 0.0 | - | - | - | - | 0.0 | 0.0 | - | - | - | - | - | - | - | - | - | - | 7.1 | 26.0 | - | - |
| | Average | - | - | 0.0 | 0.0 | - | - | - | - | 0.0 | 0.0 | - | - | - | - | - | - | - | - | - | - | 0.3 | 2.3 | - | - |
| June 14, 2025 | Minimum | - | - | 0.0 | 0.0 | - | - | - | - | 0.0 | 0.0 | - | - | - | - | - | - | - | - | - | - | 0.0 | 0.0 | - | - |
| | Maximum | - | - | 0.0 | 0.0 | - | - | - | - | 0.0 | 0.0 | - | - | - | - | - | - | - | - | - | - | 11.7 | 29.0 | - | - |
| | Average | - | - | 0.0 | 0.0 | - | - | - | - | 0.0 | 0.0 | - | - | - | - | - | - | - | - | - | - | 0.7 | 3.3 | - | - |
| June 15, 2025 | Minimum | - | - | 0.0 | 0.0 | - | - | - | - | 0.0 | 0.0 | - | - | - | - | - | - | - | - | - | - | 0.0 | 0.0 | - | - |
| | Maximum | - | - | 0.3 | 4.0 | - | - | - | - | 0.0 | 0.0 | - | - | - | - | - | - | - | - | - | - | 13.6 | 42.0 | - | - |
| | Average | - | - | 0.0 | 0.1 | - | - | - | - | 0.0 | 0.0 | - | - | - | - | - | - | - | - | - | - | 0.6 | 3.1 | - | - |

Notes:

- TVOC monitoring is suspended at each station due to operational uncertainty. Monitoring and reporting will resume upon completion of the evaluation process and verification of data accuracy.
- Benzene sampling, which is triggered based on the TVOC readings, is suspended during this evaluation period.
- Calibration readings and data produced during periods of sensor downtime and/or maintenance are excluded from the report.
- The CTair monitoring systems at each station are programmed to initiate benzene sampling when a TVOC reading of ≥ 160 ppb is measured. It has been observed that there are occurrences of TVOC readings ≥ 160 ppb where the benzene sampling was not initiated. The affected stations and periods are detailed in the monitoring systems daily reports. The equipment supplier has been notified of this issue and a corrective action will be implemented when provided.
- As discussed with the manufacturer of the H2S sensor, there is high likelihood that the H2S sensor has cross sensitivity with other sulfur compounds, including, but are not limited to, carbonyl sulfide, dimethyl sulfide, dimethyl disulfide, and methyl mercaptan. The potential for cross sensitivity with other reduced sulfur compounds must be considered when interpreting H2S levels recorded by the sensors.
- Station 3 shut down on 6/7/2025 and is scheduled for repair.



Perimeter Air Monitoring Weekly Report

Real-Time Multigas Monitoring
Bristol Landfill Air Investigation

June 9 - June 15, 2025

| Date | Daily Statistics | Bristol Met Station | | | | |
|---------------|------------------|---------------------------|-------------------|-------------------|------------------------|-----------------------------|
| | | Wind Direction degrees | Wind Speed mph | Temperature °F | Relative Humidity % | Barometric Pressure mbar |
| June 9, 2025 | Minimum | | 0.0 | 60.3 | 54.4 | 944.2 |
| | Maximum | | 12.0 | 78.7 | 96.5 | 947.5 |
| | Average | 223.9 | 2.0 | 69.8 | 79.5 | 946.1 |
| June 10, 2025 | Minimum | | 0.0 | 61.4 | 38.5 | 946.5 |
| | Maximum | | 12.0 | 78.3 | 95.2 | 953.1 |
| | Average | 214.0 | 2.1 | 68.4 | 73.6 | 949.8 |
| June 11, 2025 | Minimum | | 0.0 | 55.6 | 43.8 | 953.1 |
| | Maximum | | 7.0 | 82.3 | 93.0 | 956.2 |
| | Average | 155.1 | 1.3 | 69.1 | 70.3 | 954.6 |
| June 12, 2025 | Minimum | | 0.0 | 59.7 | 43.1 | 952.1 |
| | Maximum | | 9.0 | 84.5 | 92.6 | 955.8 |
| | Average | 124.5 | 1.7 | 71.9 | 73.4 | 954.3 |
| June 13, 2025 | Minimum | | 0.0 | 65.9 | 55.5 | 950.5 |
| | Maximum | | 13.0 | 84.7 | 94.3 | 954.1 |
| | Average | 199.2 | 2.0 | 73.9 | 79.0 | 952.5 |
| June 14, 2025 | Minimum | | 0.0 | 66.1 | 55.3 | 949.8 |
| | Maximum | | 15.0 | 83.7 | 97.2 | 953.7 |
| | Average | 245.3 | 1.8 | 73.4 | 81.6 | 952.0 |
| June 15, 2025 | Minimum | | 0.0 | 67.7 | 78.2 | 950.4 |
| | Maximum | | 11.0 | 77.0 | 95.9 | 953.0 |
| | Average | 190.2 | 1.8 | 70.7 | 90.1 | 951.8 |

Notes:

- Dash/Blank data records indicate no data is available for that interval.
- Wind direction is a daily (24-hr) average value; with the origin of wind in degrees; clockwise from North calculated with vector averaging.