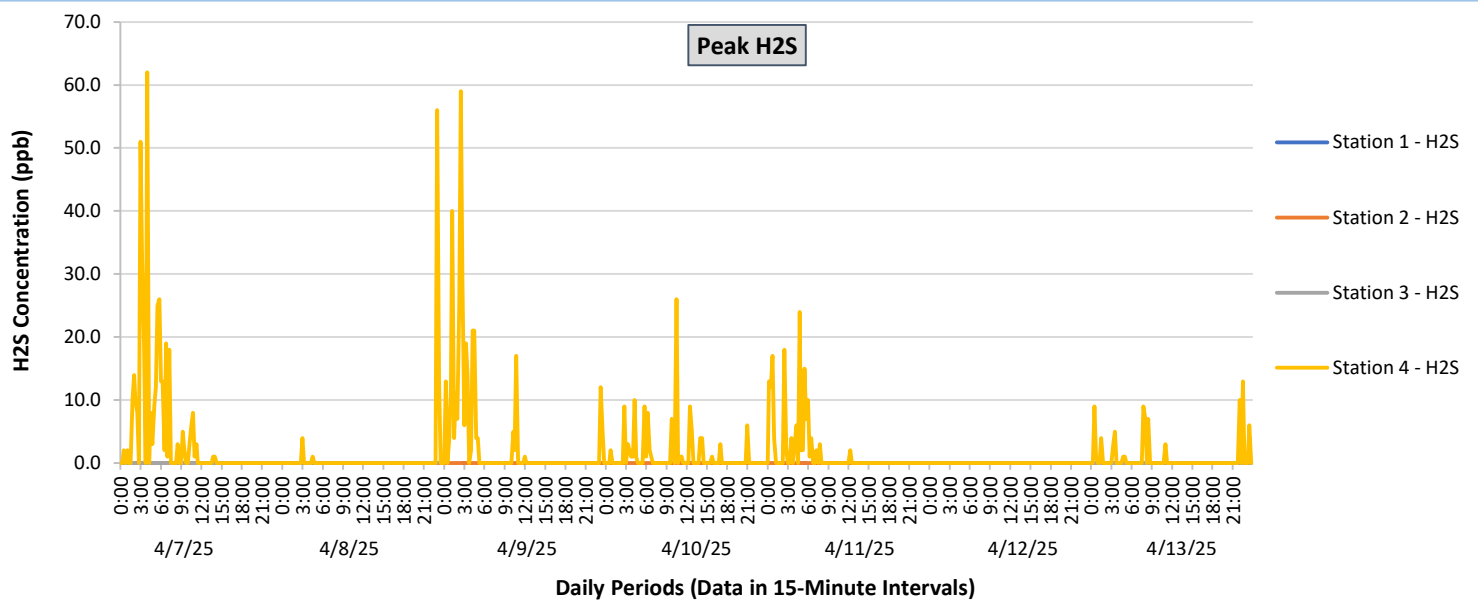
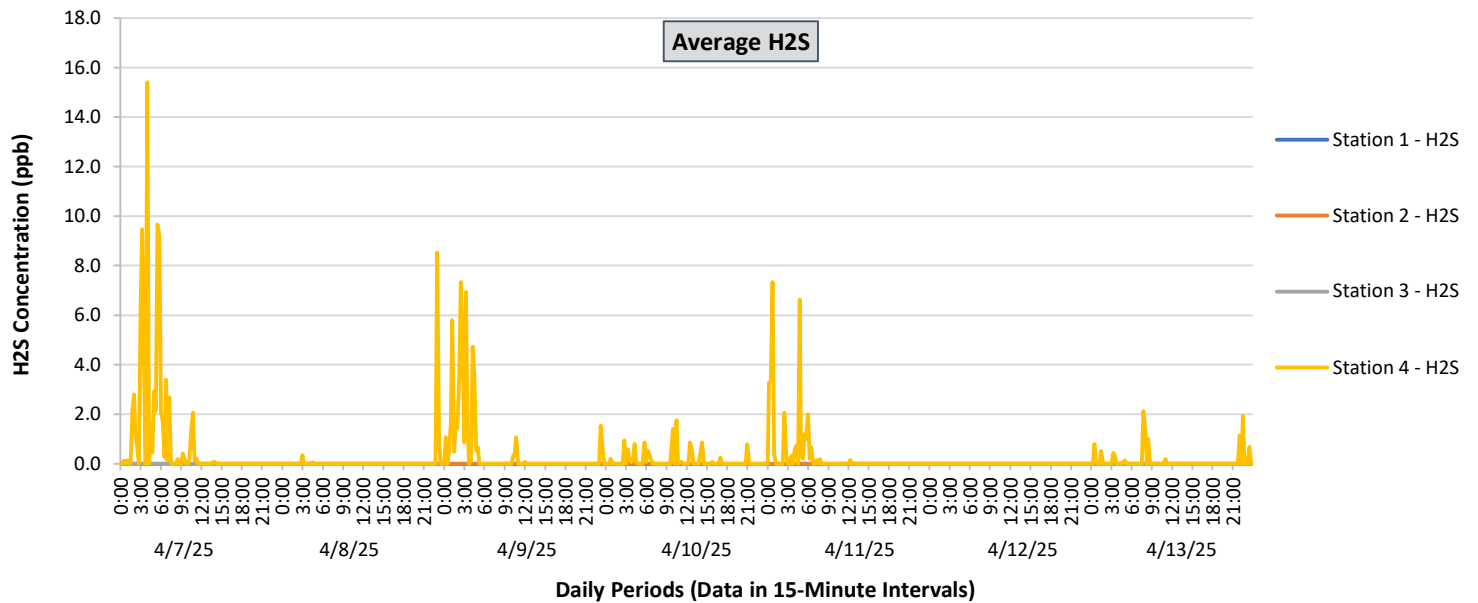




Perimeter Air Monitoring Weekly Report

Real-Time Multigas Monitoring
Bristol Landfill Air Investigation

April 7 - April 13, 2025





Perimeter Air Monitoring Weekly Report

Real-Time Multigas Monitoring

Bristol Landfill Air Investigation

April 7 - April 13, 2025

Date	Daily Statistics	Station 1						Station 2						Station 3						Station 4					
		TVOCs		H2S		Benzene		TVOCs		H2S		Benzene		TVOCs		H2S		Benzene		TVOCs		H2S		Benzene	
		Average ppb	Peak ppb	Average ppb	Peak ppb	Average ppb	Peak ppb	Average ppb	Peak ppb	Average ppb	Peak ppb	Average ppb	Peak ppb	Average ppb	Peak ppb	Average ppb	Peak ppb	Average ppb	Peak ppb	Average ppb	Peak ppb	Average ppb	Peak ppb	Average ppb	Peak ppb
		Values from 15-minute intervals.	1-minute max within each 15 minute interval	Values from 15-minute intervals.	1-minute max within each 15 minute interval	Values from 15-minute intervals.	1-minute max within each 15 minute interval	Values from 15-minute intervals.	1-minute max within each 15 minute interval	Values from 15-minute intervals.	1-minute max within each 15 minute interval	Values from 15-minute intervals.	1-minute max within each 15 minute interval	Values from 15-minute intervals.	1-minute max within each 15 minute interval	Values from 15-minute intervals.	1-minute max within each 15 minute interval	Values from 15-minute intervals.	1-minute max within each 15 minute interval	Values from 15-minute intervals.	1-minute max within each 15 minute interval	Values from 15-minute intervals.	1-minute max within each 15 minute interval	Values from 15-minute intervals.	1-minute max within each 15 minute interval
April 7, 2025	Minimum	-	-	0.0	0.0	-	-	-	-	0.0	0.0	-	-	-	-	0.0	0.0	-	-	-	-	0.0	0.0	-	-
	Maximum	-	-	0.0	0.0	-	-	-	-	0.0	0.0	-	-	-	-	0.0	0.0	-	-	-	-	15.4	62.0	-	-
	Average	-	-	0.0	0.0	-	-	-	-	0.0	0.0	-	-	-	-	0.0	0.0	-	-	-	-	0.9	4.1	-	-
April 8, 2025	Minimum	-	-	0.0	0.0	-	-	-	-	0.0	0.0	-	-	-	-	0.0	0.0	-	-	-	-	0.0	0.0	-	-
	Maximum	-	-	0.0	0.0	-	-	-	-	0.0	0.0	-	-	-	-	0.0	0.0	-	-	-	-	8.5	56.0	-	-
	Average	-	-	0.0	0.0	-	-	-	-	0.0	0.0	-	-	-	-	0.0	0.0	-	-	-	-	0.1	0.8	-	-
April 9, 2025	Minimum	-	-	0.0	0.0	-	-	-	-	0.0	0.0	-	-	-	-	0.0	0.0	-	-	-	-	0.0	0.0	-	-
	Maximum	-	-	0.0	0.0	-	-	-	-	0.0	0.0	-	-	-	-	0.0	0.0	-	-	-	-	7.3	59.0	-	-
	Average	-	-	0.0	0.0	-	-	-	-	0.0	0.0	-	-	-	-	-	-	-	-	-	-	0.5	3.5	-	-
April 10, 2025	Minimum	-	-	0.0	0.0	-	-	-	-	0.0	0.0	-	-	-	-	0.0	0.0	-	-	-	-	0.0	0.0	-	-
	Maximum	-	-	0.0	0.0	-	-	-	-	0.0	0.0	-	-	-	-	0.0	0.0	-	-	-	-	1.8	26.0	-	-
	Average	-	-	0.0	0.0	-	-	-	-	0.0	0.0	-	-	-	-	-	-	-	-	-	-	0.1	1.3	-	-
April 11, 2025	Minimum	-	-	0.0	0.0	-	-	-	-	0.0	0.0	-	-	-	-	0.0	0.0	-	-	-	-	0.0	0.0	-	-
	Maximum	-	-	0.0	0.0	-	-	-	-	0.0	0.0	-	-	-	-	0.0	0.0	-	-	-	-	7.3	24.0	-	-
	Average	-	-	0.0	0.0	-	-	-	-	0.0	0.0	-	-	-	-	0.0	0.0	-	-	-	-	0.3	1.6	-	-
April 12, 2025	Minimum	-	-	0.0	0.0	-	-	-	-	0.0	0.0	-	-	-	-	0.0	0.0	-	-	-	-	0.0	0.0	-	-
	Maximum	-	-	0.0	0.0	-	-	-	-	0.0	0.0	-	-	-	-	0.0	0.0	-	-	-	-	0.0	0.0	-	-
	Average	-	-	0.0	0.0	-	-	-	-	0.0	0.0	-	-	-	-	0.0	0.0	-	-	-	-	0.0	0.0	-	-
April 13, 2025	Minimum	-	-	0.0	0.0	-	-	-	-	0.0	0.0	-	-	-	-	0.0	0.0	-	-	-	-	0.0	0.0	-	-
	Maximum	-	-	0.0	0.0	-	-	-	-	0.0	0.0	-	-	-	-	0.0	0.0	-	-	-	-	2.1	13.0	-	-
	Average	-	-	0.0	0.0	-	-	-	-	0.0	0.0	-	-	-	-	0.0	0.0	-	-	-	-	0.1	0.8	-	-

Notes:

- TVOC monitoring is suspended at each station due to operational uncertainty. Monitoring and reporting will resume upon completion of the evaluation process and verification of data accuracy.

- Benzene sampling, which is triggered based on the TVOC readings, is suspended during this evaluation period.

- Calibration readings and data produced during periods of sensor downtime and/or maintenance are excluded from the report.

- The CTair monitoring systems at each station are programmed to initiate benzene sampling when a TVOC reading of ≥ 160 ppb is measured. It has been observed that there are occurrences of TVOC readings ≥ 160 ppb where the benzene sampling was not initiated. The affected stations and periods are detailed in the monitoring systems daily reports. The equipment supplier has been notified of this issue and a corrective action will be implemented when provided.

- As discussed with the manufacturer of the H2S sensor, there is high likelihood that the H2S sensor has cross sensitivity with other sulfur compounds, including, but are not limited to, carbonyl sulfide, dimethyl sulfide, dimethyl disulfide, and methyl mercaptan. The potential for cross sensitivity with other reduced sulfur compounds must be considered when interpreting H2S levels recorded by the sensors.



Perimeter Air Monitoring Weekly Report

Real-Time Multigas Monitoring
Bristol Landfill Air Investigation

April 7 - April 13, 2025

Date	Daily Statistics	Bristol Met Station				
		Wind Direction degrees	Wind Speed mph	Temperature °F	Relative Humidity %	Barometric Pressure mbar
April 7, 2025	Minimum		0.0	43.2	77.6	938.3
	Maximum		12.0	59.5	96.8	943.6
	Average	248.0	2.2	52.9	91.1	940.6
April 8, 2025	Minimum		0.0	37.6	35.6	943.3
	Maximum		13.0	49.5	94.9	953.2
	Average	276.1	3.0	42.3	63.5	947.7
April 9, 2025	Minimum		0.0	30.5	27.3	952.0
	Maximum		12.0	62.9	73.0	956.2
	Average	195.7	2.6	46.7	45.8	954.0
April 10, 2025	Minimum		0.0	43.4	55.0	948.4
	Maximum		10.0	55.4	92.9	954.1
	Average	179.7	1.8	48.4	76.7	951.7
April 11, 2025	Minimum		0.0	40.5	79.9	946.8
	Maximum		12.0	47.6	95.5	951.6
	Average	239.9	2.6	44.6	91.0	948.6
April 12, 2025	Minimum		0.0	36.5	38.7	950.3
	Maximum		11.0	51.5	84.6	953.3
	Average	273.7	3.1	41.3	67.4	951.7
April 13, 2025	Minimum		0.0	30.2	34.3	949.2
	Maximum		14.0	62.8	87.2	955.1
	Average	130.3	2.0	47.2	58.7	952.2

Notes:

- Dash/Blank data records indicate no data is available for that interval.
- Wind direction is a daily (24-hr) average value; with the origin of wind in degrees; clockwise from North calculated with vector averaging.