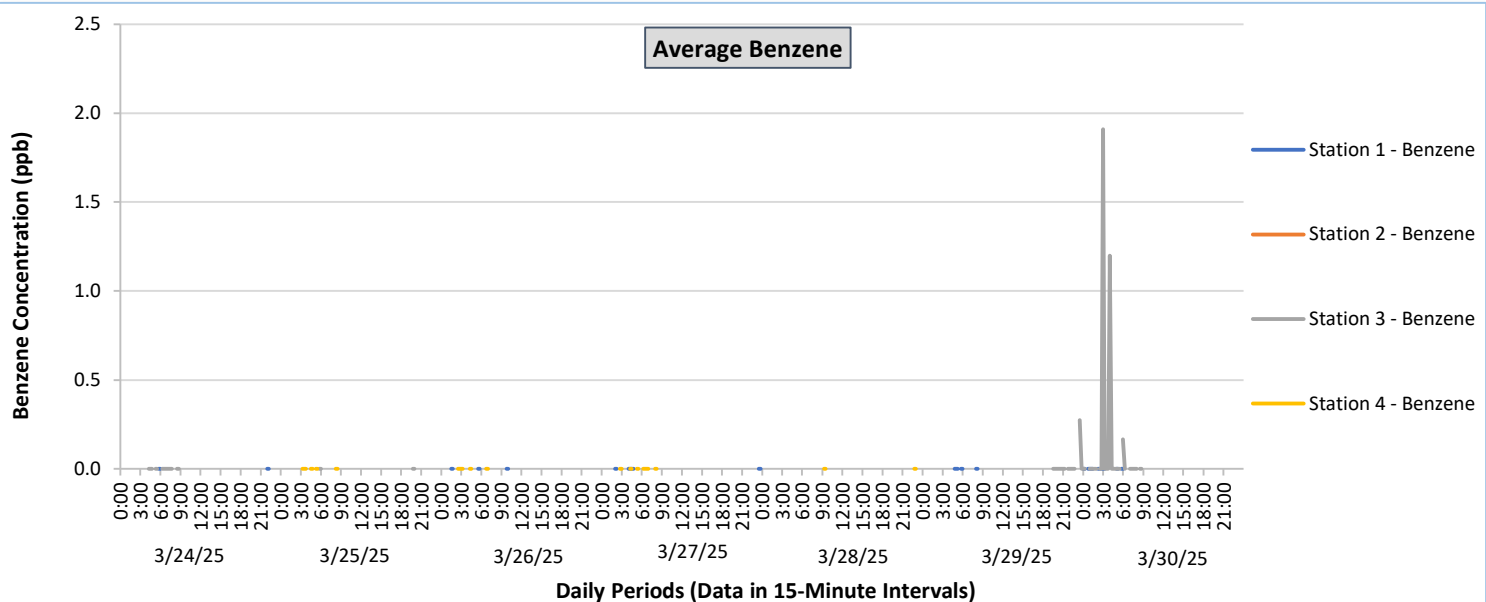
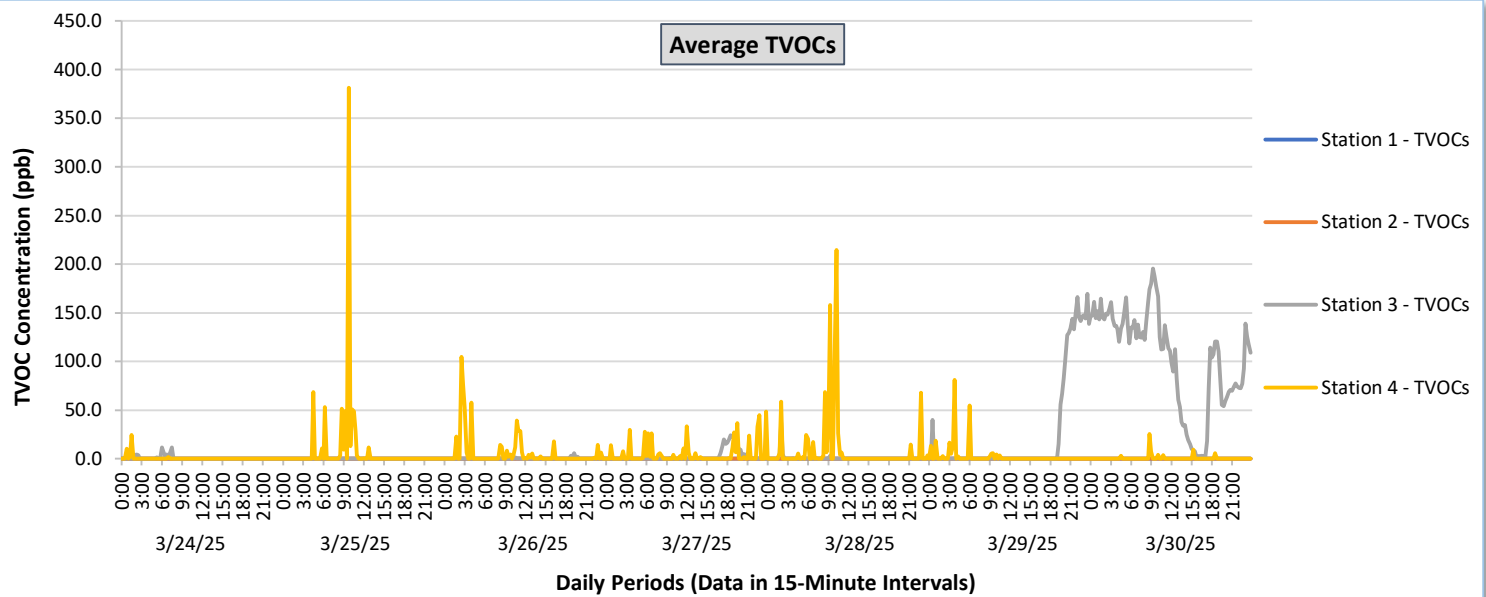




## Perimeter Air Monitoring Weekly Report

Real-Time Multigas Monitoring  
Bristol Landfill Air Investigation

March 24 - March 30, 2025

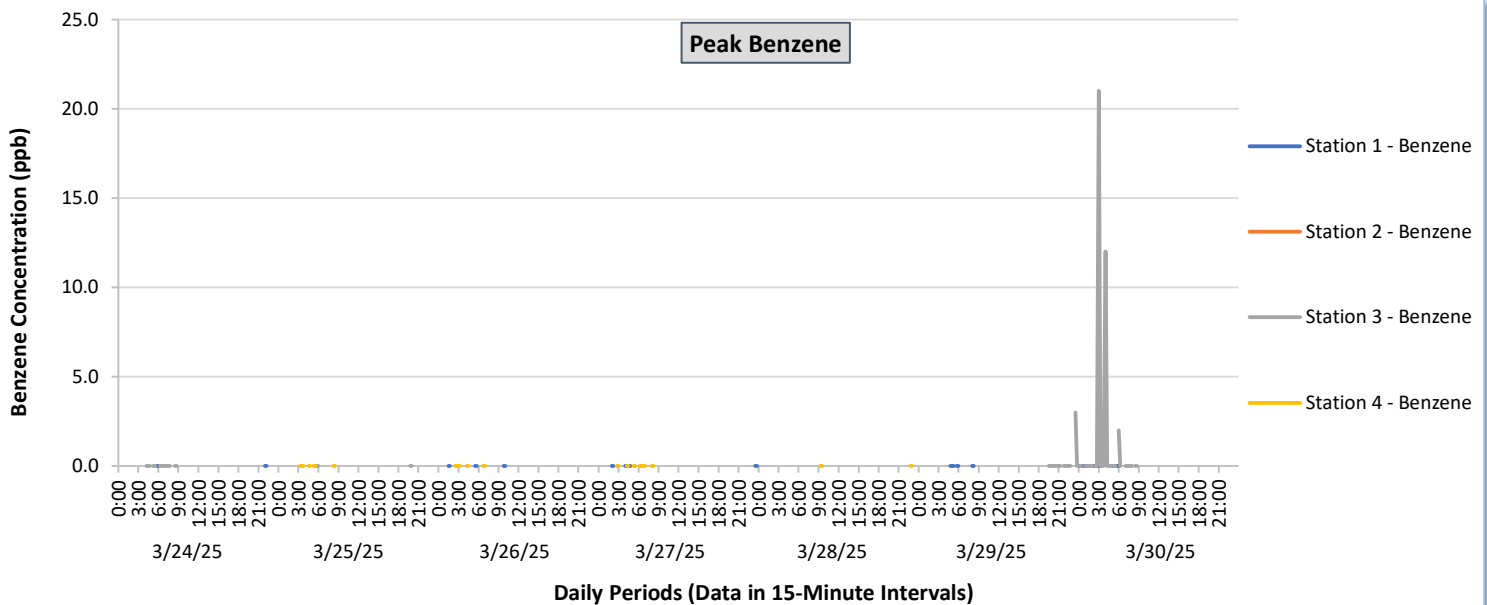
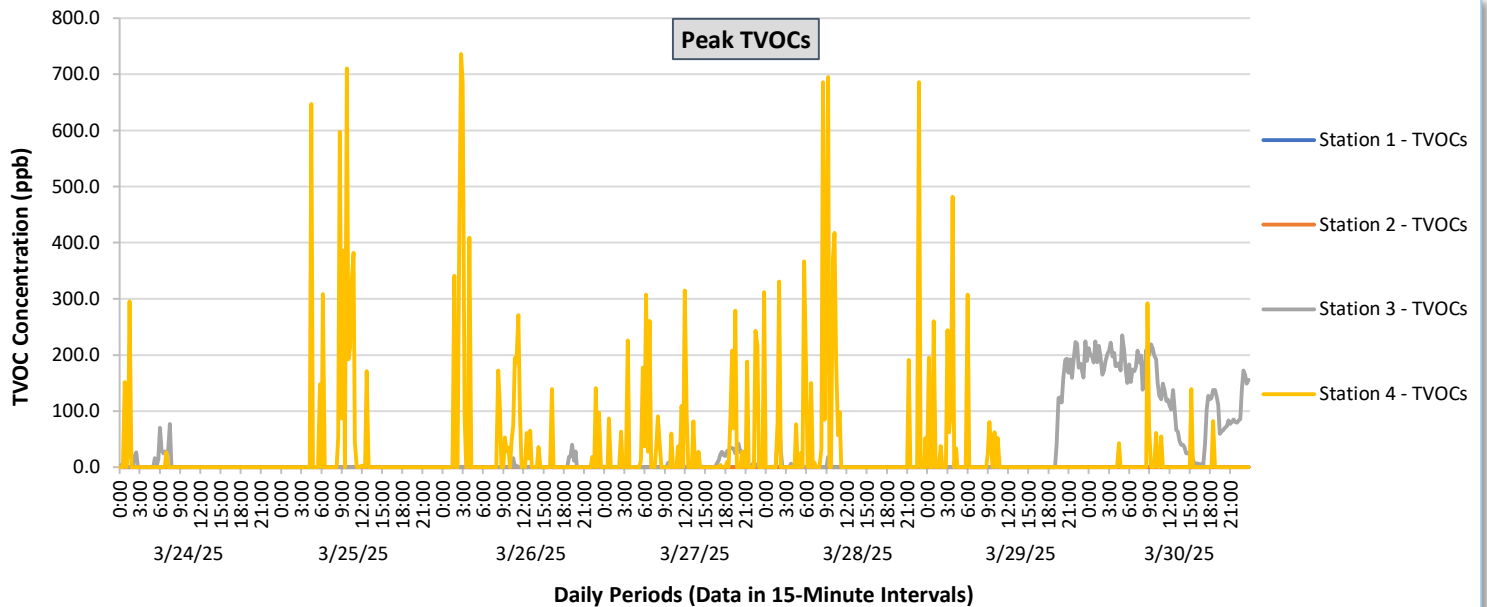




## Perimeter Air Monitoring Weekly Report

Real-Time Multigas Monitoring  
Bristol Landfill Air Investigation

March 24 - March 30, 2025

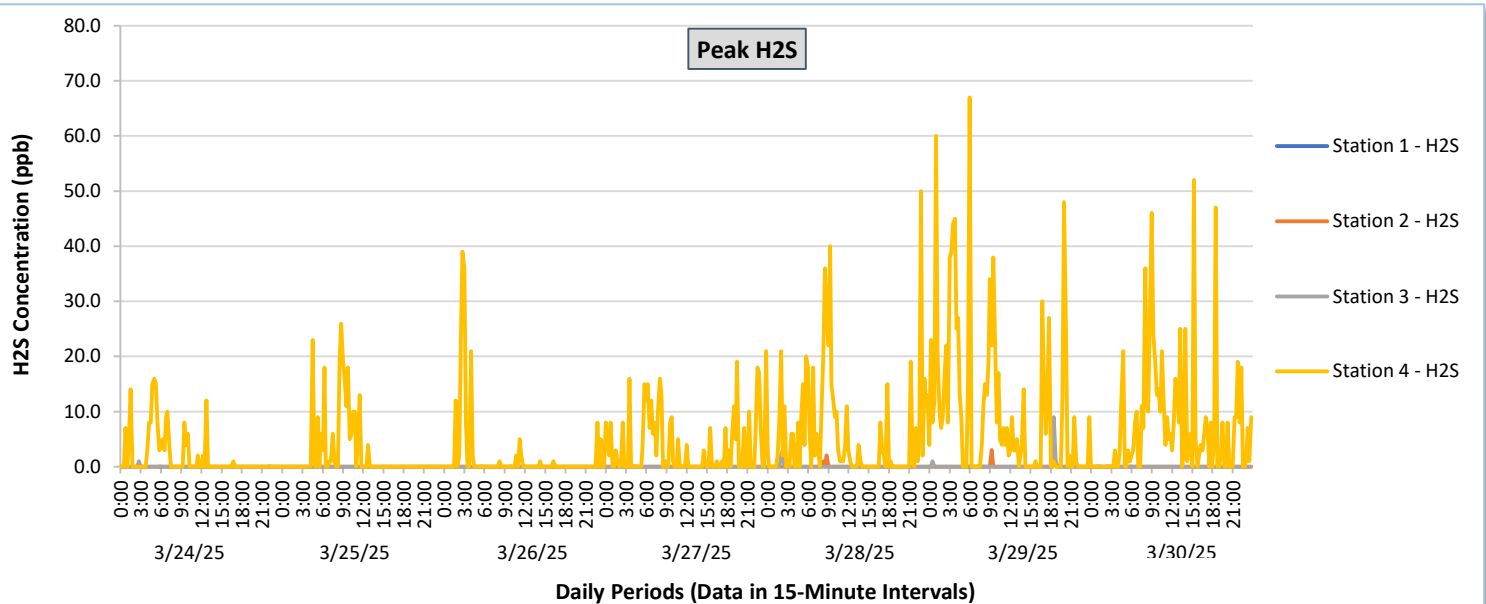
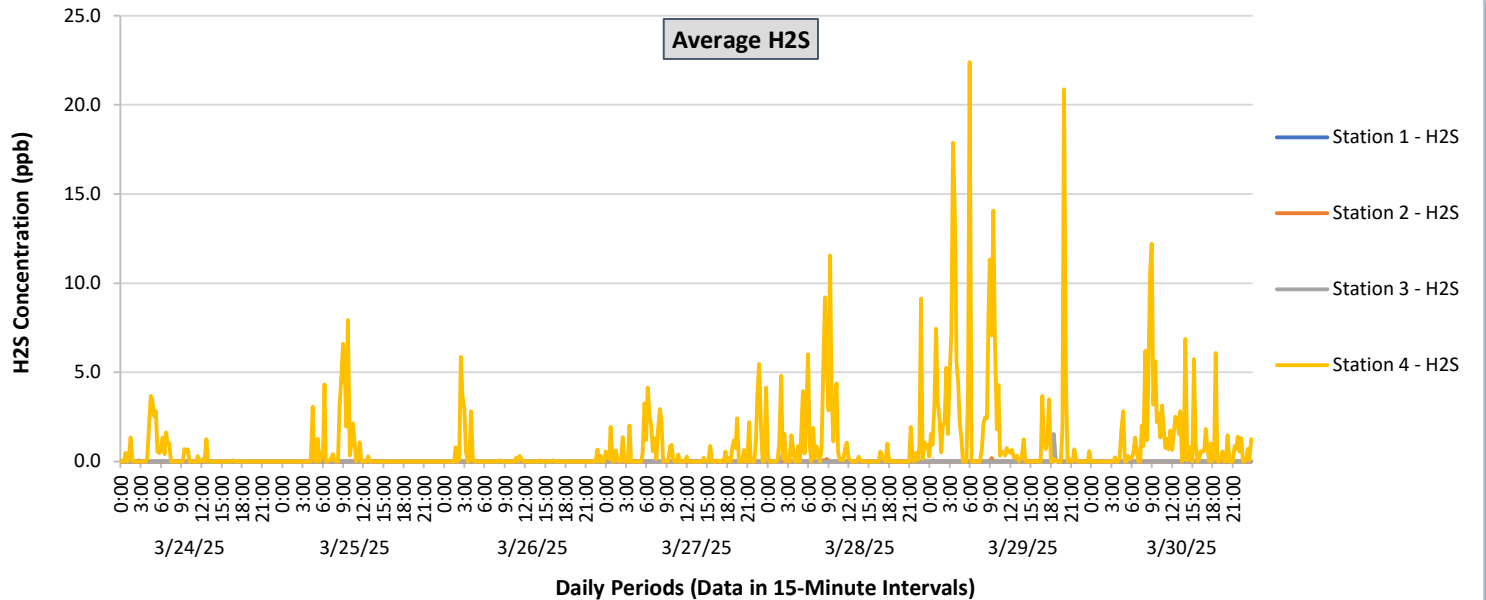




## Perimeter Air Monitoring Weekly Report

Real-Time Multigas Monitoring  
Bristol Landfill Air Investigation

March 24 - March 30, 2025





## Perimeter Air Monitoring Weekly Report

Real-Time Multigas Monitoring  
Bristol Landfill Air Investigation  
March 24 - March 30, 2025

Date	Daily Statistics	Station 1						Station 2						Station 3						Station 4					
		TVOCs		H2S		Benzene		TVOCs		H2S		Benzene		TVOCs		H2S		Benzene		TVOCs		H2S		Benzene	
		Average ppb	Peak ppb	Average ppb	Peak ppb	Average ppb	Peak ppb	Average ppb	Peak ppb	Average ppb	Peak ppb	Average ppb	Peak ppb	Average ppb	Peak ppb	Average ppb	Peak ppb	Average ppb	Peak ppb	Average ppb	Peak ppb	Average ppb	Peak ppb	Average ppb	Peak ppb
		Values from 15-minute intervals.	1-minute max within each 15 minute interval.	Values from 15-minute intervals.	1-minute max within each 15 minute interval.	Values from 15-minute intervals.	1-minute max within each 15 minute interval.	Values from 15-minute intervals.	1-minute max within each 15 minute interval.	Values from 15-minute intervals.	1-minute max within each 15 minute interval.	Values from 15-minute intervals.	1-minute max within each 15 minute interval.	Values from 15-minute intervals.	1-minute max within each 15 minute interval.	Values from 15-minute intervals.	1-minute max within each 15 minute interval.	Values from 15-minute intervals.	1-minute max within each 15 minute interval.	Values from 15-minute intervals.	1-minute max within each 15 minute interval.	Values from 15-minute intervals.	1-minute max within each 15 minute interval.	Values from 15-minute intervals.	1-minute max within each 15 minute interval.
March 24, 2025	Minimum	0.0	0.0	0.0	0.0	-	-	0.0	0.0	0.0	0.0	-	-	0.0	0.0	0.0	0.0	-	-	0.0	0.0	0.0	0.0	0.0	0.0
	Maximum	0.0	0.0	0.0	0.0	-	-	0.0	0.0	0.0	0.0	-	-	11.5	77.0	0.1	1.0	-	-	24.4	295.0	3.7	16.0	0.0	0.0
	Average	0.0	0.0	0.0	0.0	-	-	0.0	0.0	0.0	0.0	-	-	0.6	3.7	0.0	0.0	-	-	0.4	5.2	0.3	1.8	-	-
March 25, 2025	Minimum	0.0	0.0	0.0	0.0	-	-	0.0	0.0	0.0	0.0	-	-	0.0	0.0	0.0	0.0	-	-	0.0	0.0	0.0	0.0	0.0	0.0
	Maximum	0.0	0.0	0.0	0.0	-	-	0.0	0.0	0.0	0.0	-	-	0.0	0.0	0.0	0.0	-	-	381.3	711.0	7.9	26.0	0.0	0.0
	Average	0.0	0.0	0.0	0.0	-	-	0.0	0.0	0.0	0.0	-	-	0.0	0.0	0.0	0.0	-	-	8.1	44.6	0.5	2.4	0.0	0.0
March 26, 2025	Minimum	0.0	0.0	0.0	0.0	-	-	0.0	0.0	0.0	0.0	-	-	0.0	0.0	0.0	0.0	-	-	0.0	0.0	0.0	0.0	0.0	0.0
	Maximum	0.0	0.0	0.0	0.0	-	-	0.0	0.0	0.0	0.0	-	-	5.4	40.0	0.0	0.0	-	-	104.5	736.0	5.9	39.0	0.0	0.0
	Average	0.0	0.0	0.0	0.0	-	-	0.0	0.0	0.0	0.0	-	-	0.2	1.4	0.0	0.0	-	-	5.5	47.6	0.2	1.8	0.0	0.0
March 27, 2025	Minimum	0.0	0.0	0.0	0.0	-	-	0.0	0.0	0.0	0.0	-	-	0.0	0.0	0.0	0.0	-	-	0.0	0.0	0.0	0.0	0.0	0.0
	Maximum	0.0	0.0	0.0	0.0	-	-	0.0	0.0	0.0	0.0	-	-	24.1	42.0	0.0	0.0	-	-	48.1	315.0	5.5	21.0	0.0	0.0
	Average	0.0	0.0	0.0	0.0	-	-	0.0	0.0	0.0	0.0	-	-	2.4	5.6	0.0	0.0	-	-	4.6	39.0	0.6	3.6	0.0	0.0
March 28, 2025	Minimum	0.0	0.0	0.0	0.0	-	-	0.0	0.0	0.0	0.0	-	-	0.0	0.0	0.0	0.0	-	-	0.0	0.0	0.0	0.0	0.0	0.0
	Maximum	0.0	0.0	0.1	1.0	-	-	0.0	0.0	0.1	2.0	-	-	37.2	98.0	0.4	3.0	-	-	214.6	695.0	11.6	50.0	0.0	0.0
	Average	0.0	0.0	0.0	0.0	-	-	0.0	0.0	0.0	0.0	-	-	0.5	2.2	0.0	0.1	-	-	9.1	53.6	1.0	5.8	0.0	0.0
March 29, 2025	Minimum	0.0	0.0	0.0	0.0	-	-	0.0	0.0	0.0	0.0	-	-	0.0	0.0	0.0	0.0	0.0	0.0	0.0	0.0	0.0	0.0	0.0	0.0
	Maximum	0.0	0.0	0.1	1.0	-	-	0.0	0.0	0.2	3.0	-	-	169.3	224.0	1.5	9.0	0.3	3.0	80.9	482.0	22.4	67.0	0.0	0.0
	Average	0.0	0.0	0.0	0.0	-	-	0.0	0.0	0.0	0.1	-	-	24.7	34.5	0.0	0.1	0.0	0.2	2.4	20.6	2.3	10.4	-	-
March 30, 2025	Minimum	0.0	0.0	0.0	0.0	-	-	0.0	0.0	0.0	0.0	-	-	0.1	1.0	0.0	0.0	0.0	0.0	0.0	0.0	0.0	0.0	0.0	0.0
	Maximum	0.0	0.0	0.0	0.0	-	-	0.0	0.0	0.0	0.0	-	-	195.5	235.0	0.1	2.0	1.9	21.0	25.5	292.0	12.2	52.0	0.0	0.0
	Average	0.0	0.0	0.0	0.0	-	-	0.0	0.0	0.0	0.0	-	-	103.0	129.6	0.0	0.0	0.1	1.2	0.6	7.8	1.2	7.4	-	-

### Notes:

- Data records with a dash indicate no data is available for that interval.
- Calibration readings and data produced during periods of sensor downtime and/or maintenance are excluded from the report.
- The CTair monitoring systems at each station are programmed to initiate benzene sampling when a TVOC reading of  $\geq 160$  ppb is measured. It has been observed that there are occurrences of TVOC readings  $\geq 160$  ppb where the benzene sampling was not initiated. The affected stations and periods are detailed in the monitoring systems daily reports. The equipment supplier has been notified of this issue and a corrective action will be implemented when provided.
- As discussed with the manufacturer of the H2S sensor, there is high likelihood that the H2S sensor has cross sensitivity with other sulfur compounds, including, but are not limited to, carbonyl sulfide, dimethyl sulfide, dimethyl disulfide, and methyl mercaptan. The potential for cross sensitivity with other reduced sulfur compounds must be considered when interpreting H2S levels recorded by the sensors.



## Perimeter Air Monitoring Weekly Report

Real-Time Multigas Monitoring  
Bristol Landfill Air Investigation

March 24 - March 30, 2025

Date	Daily Statistics	Bristol Met Station				
		Wind Direction degrees	Wind Speed mph	Temperature °F	Relative Humidity %	Barometric Pressure mbar
March 24, 2025	Minimum		0.0	45.3	29.0	943.2
	Maximum		17.0	64.1	95.5	948.5
	Average	238.3	4.5	54.5	59.9	945.8
March 25, 2025	Minimum		0.0	39.6	30.9	944.7
	Maximum		20.0	65.1	63.4	952.7
	Average	244.5	3.7	50.3	44.0	948.6
March 26, 2025	Minimum		0.0	39.6	26.9	952.4
	Maximum		19.0	55.1	74.1	957.4
	Average	277.7	3.5	46.4	49.9	954.7
March 27, 2025	Minimum		0.0	31.5	23.6	956.8
	Maximum		11.0	62.4	75.7	960.5
	Average	167.7	2.3	48.0	47.2	958.1
March 28, 2025	Minimum		0.0	49.2	32.6	953.4
	Maximum		16.0	75.8	70.9	958.7
	Average	171.4	3.0	62.3	48.4	956.2
March 29, 2025	Minimum		0.0	53.4	40.0	951.0
	Maximum		18.0	74.5	93.8	956.5
	Average	156.1	2.3	63.2	58.2	953.9
March 30, 2025	Minimum		0.0	55.5	60.2	945.2
	Maximum		11.0	70.9	95.1	952.7
	Average	203.1	2.3	62.5	80.3	949.7

### Notes:

- Dash/Blank data records indicate no data is available for that interval.
- Wind direction is a daily (24-hr) average value; with the origin of wind in degrees; clockwise from North calculated with vector averaging.