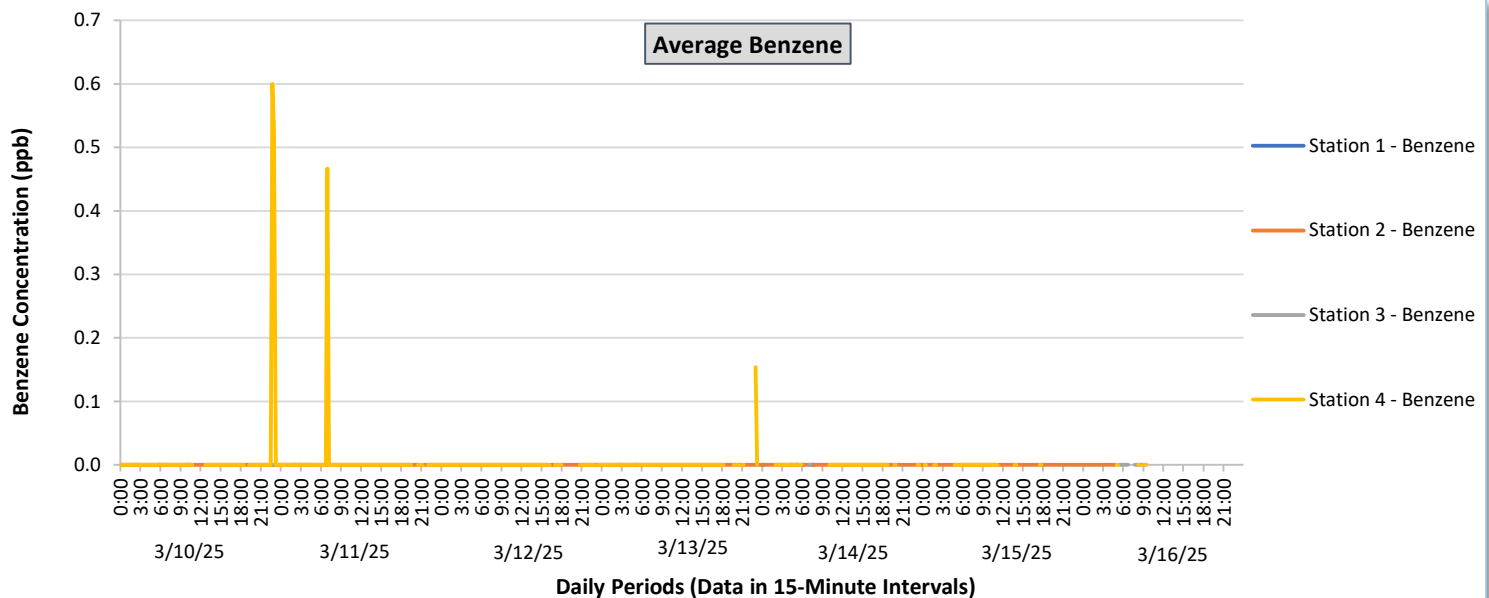
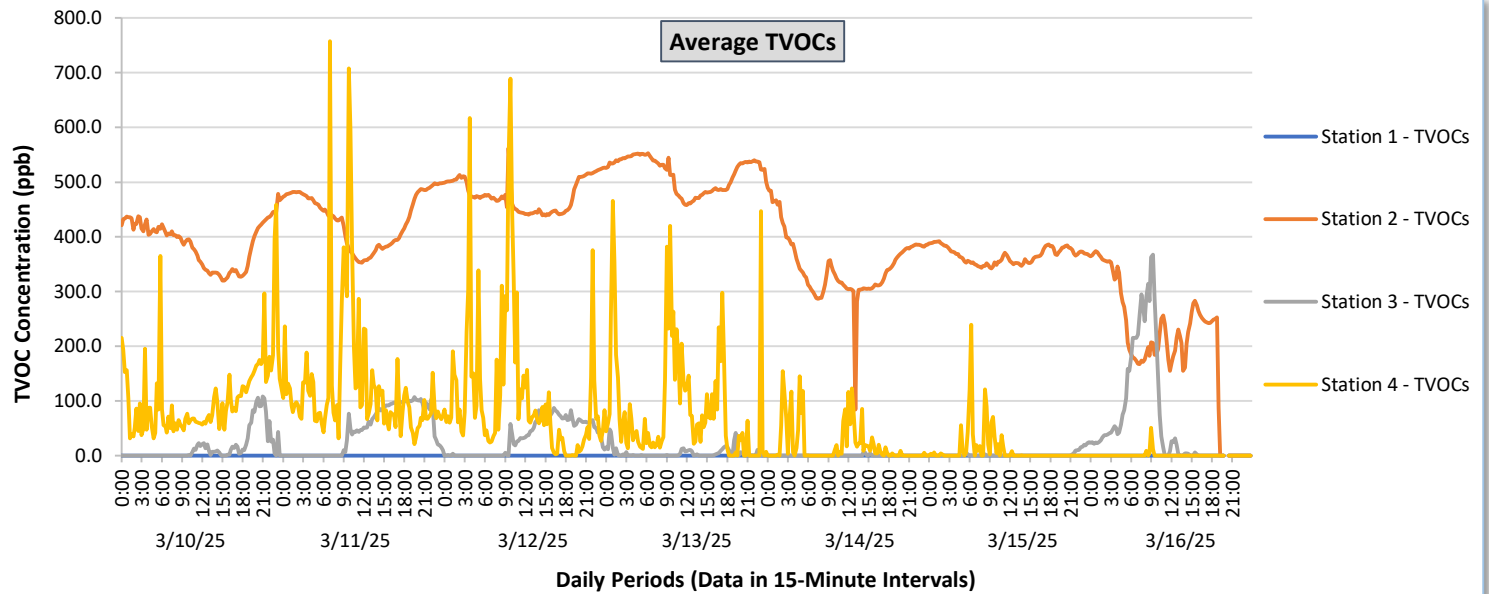




## Perimeter Air Monitoring Weekly Report

Real-Time Multigas Monitoring  
Bristol Landfill Air Investigation

March 10 - March 16, 2025

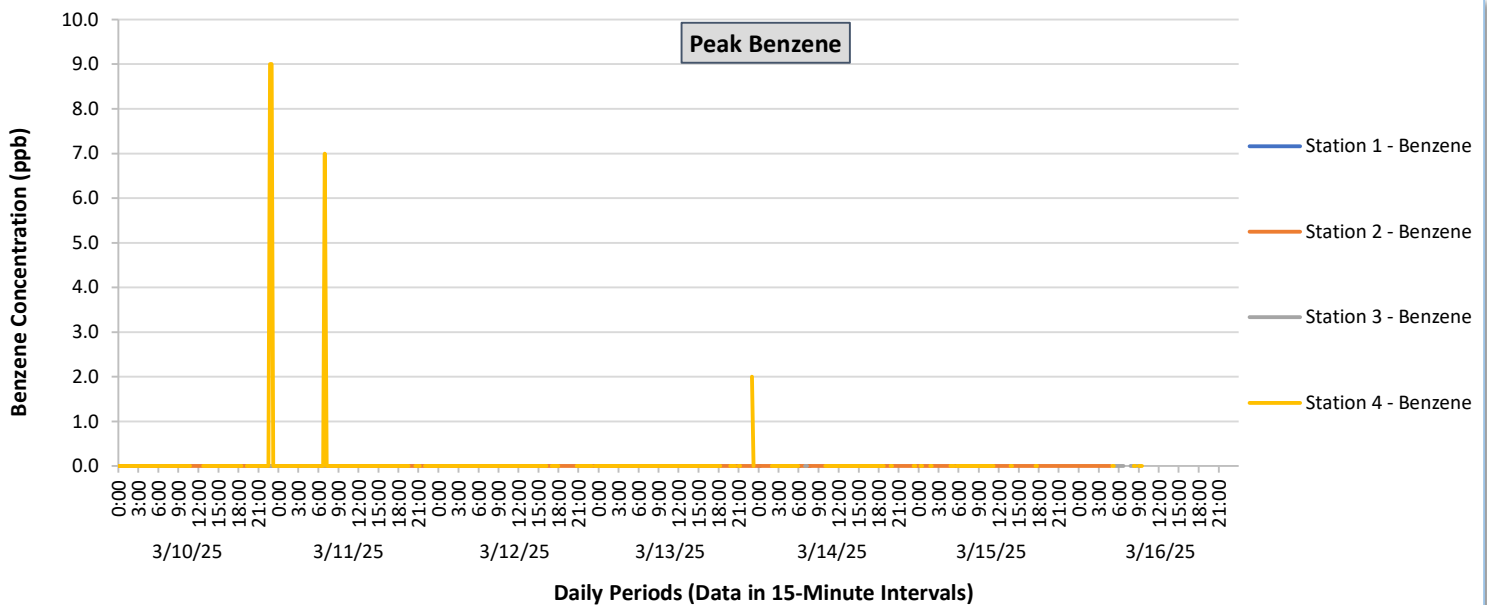
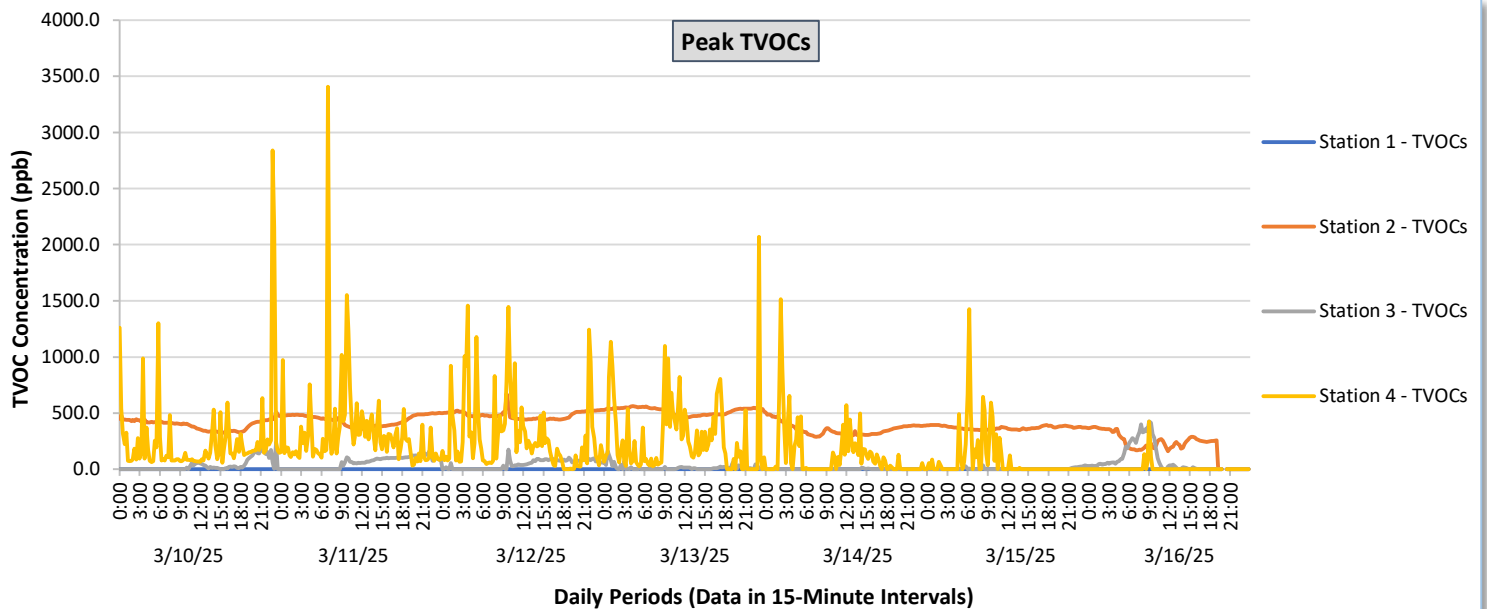




## Perimeter Air Monitoring Weekly Report

Real-Time Multigas Monitoring  
Bristol Landfill Air Investigation

March 10 - March 16, 2025

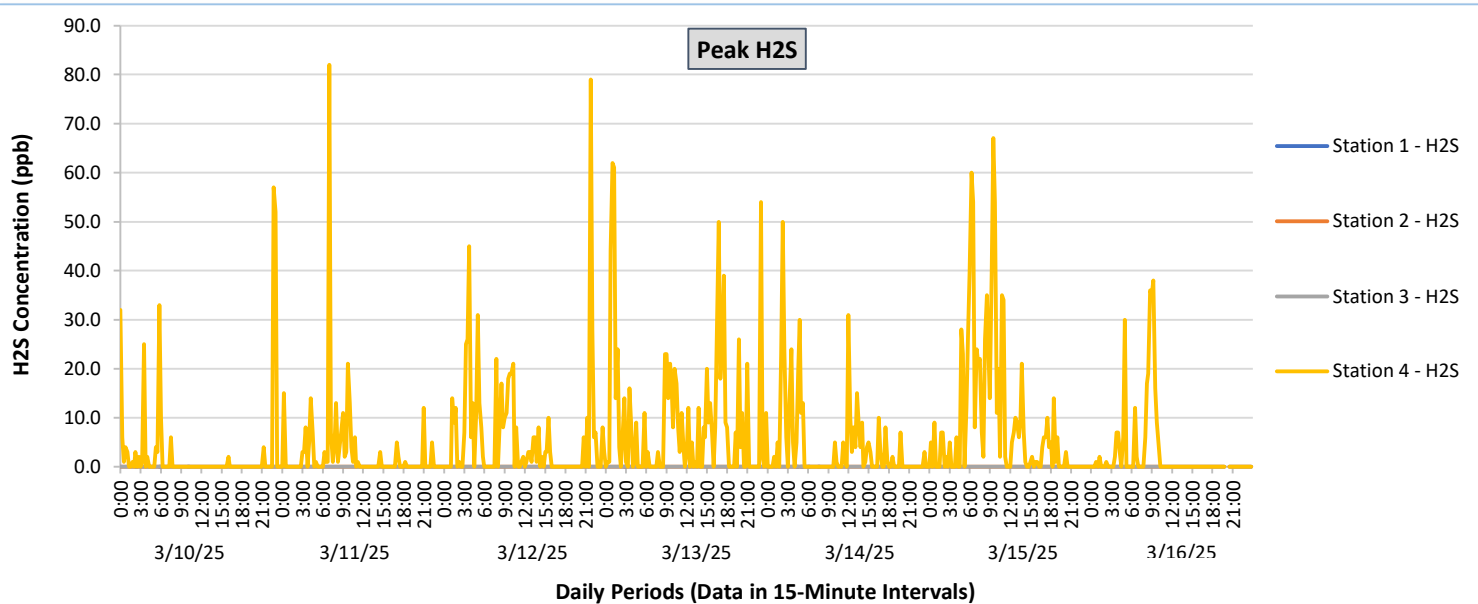
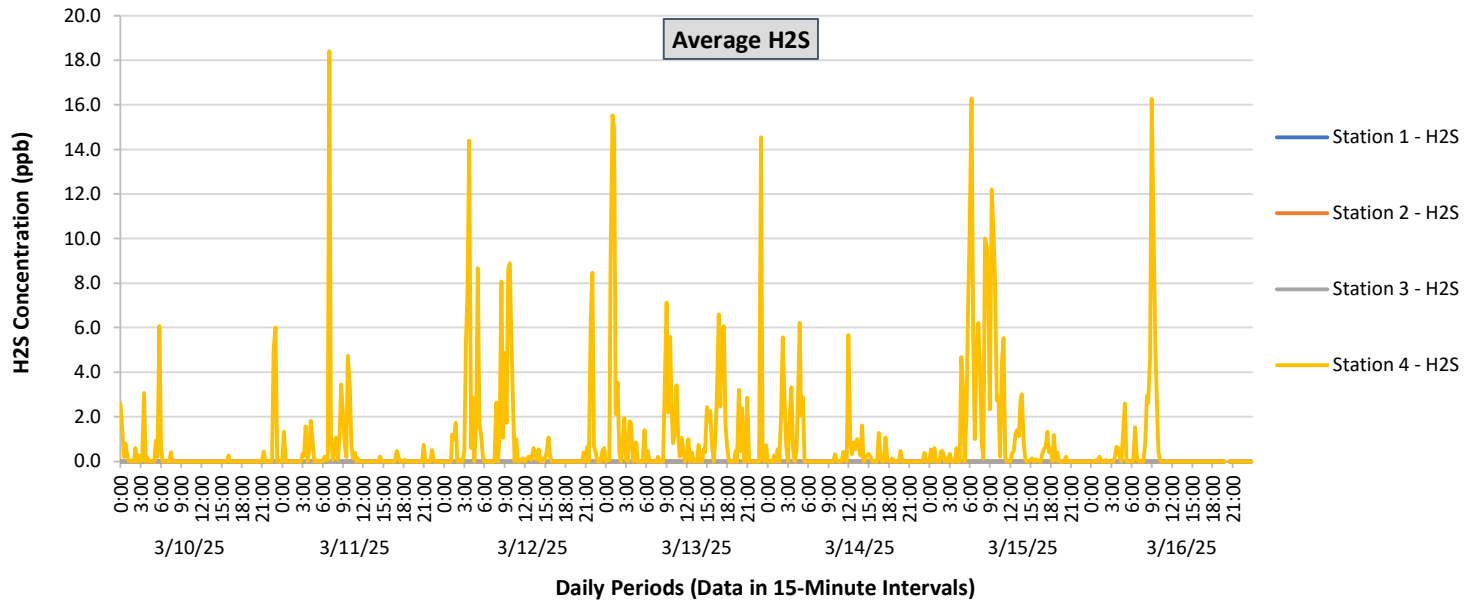




## Perimeter Air Monitoring Weekly Report

Real-Time Multigas Monitoring  
Bristol Landfill Air Investigation

March 10 - March 16, 2025





## Perimeter Air Monitoring Weekly Report

Real-Time Multigas Monitoring  
Bristol Landfill Air Investigation  
March 10 - March 16, 2025

Date	Daily Statistics	Station 1						Station 2						Station 3						Station 4					
		TVOCs		H2S		Benzene		TVOCs		H2S		Benzene		TVOCs		H2S		Benzene		TVOCs		H2S		Benzene	
		Average ppb	Peak ppb	Average ppb	Peak ppb	Average ppb	Peak ppb	Average ppb	Peak ppb	Average ppb	Peak ppb	Average ppb	Peak ppb	Average ppb	Peak ppb	Average ppb	Peak ppb	Average ppb	Peak ppb	Average ppb	Peak ppb	Average ppb	Peak ppb	Average ppb	Peak ppb
		Values from 15-minute intervals.	1-minute max within each 15 minute interval.	Values from 15-minute intervals.	1-minute max within each 15 minute interval.	Values from 15-minute intervals.	1-minute max within each 15 minute interval.	Values from 15-minute intervals.	1-minute max within each 15 minute interval.	Values from 15-minute intervals.	1-minute max within each 15 minute interval.	Values from 15-minute intervals.	1-minute max within each 15 minute interval.	Values from 15-minute intervals.	1-minute max within each 15 minute interval.	Values from 15-minute intervals.	1-minute max within each 15 minute interval.	Values from 15-minute intervals.	1-minute max within each 15 minute interval.	Values from 15-minute intervals.	1-minute max within each 15 minute interval.	Values from 15-minute intervals.	1-minute max within each 15 minute interval.	Values from 15-minute intervals.	1-minute max within each 15 minute interval.
March 10, 2025	Minimum	0.0	0.0	0.0	0.0	-	-	320.3	322.0	0.0	0.0	0.0	0.0	0.0	0.0	0.0	0.0	0.0	0.0	31.6	56.0	0.0	0.0	0.0	0.0
	Maximum	0.0	0.0	0.0	0.0	-	-	478.6	512.0	0.0	0.0	0.0	0.0	108.1	240.0	0.0	0.0	0.0	0.0	458.9	2,839.0	6.1	57.0	0.6	9.0
	Average	0.0	0.0	0.0	0.0	-	-	390.1	396.5	0.0	0.0	0.0	0.0	15.9	33.3	0.0	0.0	0.0	0.0	106.9	255.9	0.3	2.6	0.0	0.2
March 11, 2025	Minimum	0.0	0.0	0.0	0.0	-	-	352.9	354.0	0.0	0.0	0.0	0.0	0.0	0.0	0.0	0.0	-	-	20.9	30.0	0.0	0.0	0.0	0.0
	Maximum	0.0	0.0	0.0	0.0	-	-	498.5	501.0	0.0	0.0	0.0	0.0	107.1	157.0	0.0	0.0	-	-	757.6	3,406.0	18.4	82.0	0.5	7.0
	Average	0.0	0.0	0.0	0.0	-	-	433.6	437.0	0.0	0.0	0.0	0.0	45.1	57.5	0.0	0.0	-	-	128.8	320.3	0.5	2.8	0.0	0.1
March 12, 2025	Minimum	0.0	0.0	0.0	0.0	-	-	439.1	441.0	0.0	0.0	0.0	0.0	0.0	0.0	0.0	0.0	0.0	0.0	0.0	0.0	0.0	0.0	0.0	0.0
	Maximum	0.0	0.0	0.0	0.0	-	-	562.1	672.0	0.0	0.0	0.0	0.0	86.7	175.0	0.0	0.0	0.0	0.0	689.1	1,456.0	14.4	79.0	0.0	0.0
	Average	0.0	0.0	0.0	0.0	-	-	476.5	482.0	0.0	0.0	0.0	0.0	33.8	43.7	0.0	0.0	-	-	109.0	294.9	1.2	6.1	0.0	0.0
March 13, 2025	Minimum	0.0	0.0	0.0	0.0	-	-	458.0	460.0	0.0	0.0	0.0	0.0	0.0	0.0	0.0	0.0	0.0	0.0	0.0	0.0	0.0	0.0	0.0	0.0
	Maximum	0.0	0.0	0.0	0.0	-	-	552.8	561.0	0.0	0.0	0.0	0.0	47.9	163.0	0.0	0.0	0.0	0.0	465.3	2,070.0	15.5	62.0	0.2	2.0
	Average	0.0	0.0	0.0	0.0	-	-	515.1	519.3	0.0	0.0	0.0	0.0	4.5	13.9	0.0	0.0	-	-	86.5	269.9	1.5	9.1	0.0	0.0
March 14, 2025	Minimum	0.0	0.0	0.0	0.0	-	-	84.1	288.0	0.0	0.0	0.0	0.0	0.0	0.0	0.0	0.0	-	-	0.0	0.0	0.0	0.0	0.0	0.0
	Maximum	0.0	0.0	0.0	0.0	-	-	489.4	504.0	0.0	0.0	0.0	0.0	6.3	12.0	0.0	0.0	-	-	154.6	1,513.0	6.2	50.0	0.0	0.0
	Average	0.0	0.0	0.0	0.0	-	-	348.5	355.2	0.0	0.0	0.0	0.0	0.2	0.4	0.0	0.0	-	-	20.3	120.9	0.5	4.0	0.0	0.0
March 15, 2025	Minimum	0.0	0.0	0.0	0.0	-	-	342.1	347.0	0.0	0.0	0.0	0.0	0.0	0.0	0.0	0.0	-	-	0.0	0.0	0.0	0.0	0.0	0.0
	Maximum	0.0	0.0	0.0	0.0	-	-	392.3	393.0	0.0	0.0	0.0	0.0	24.3	34.0	0.0	0.0	-	-	239.1	1,426.0	16.3	67.0	0.0	0.0
	Average	0.0	0.0	0.0	0.0	-	-	365.9	368.6	0.0	0.0	0.0	0.0	1.7	3.3	0.0	0.0	-	-	11.1	82.6	1.7	9.1	0.0	0.0
March 16, 2025	Minimum	0.0	0.0	0.0	0.0	-	-	0.0	0.0	0.0	0.0	0.0	0.0	0.0	0.0	0.0	0.0	0.0	0.0	0.0	0.0	0.0	0.0	0.0	0.0
	Maximum	0.0	0.0	0.0	0.0	-	-	373.7	375.0	0.0	0.0	0.0	0.0	367.3	424.0	0.0	0.0	0.0	0.0	51.2	427.0	16.3	38.0	0.0	0.0
	Average	0.0	0.0	0.0	0.0	-	-	203.0	211.3	0.0	0.0	0.0	0.0	62.9	76.8	0.0	0.0	0.0	0.0	0.8	7.7	0.6	2.7	0.0	0.0

### Notes:

- Data records with a dash indicate no data is available for that interval.
- Calibration readings and data produced during periods of sensor downtime and/or maintenance are excluded from the report.
- The CTair monitoring systems at each station are programmed to initiate benzene sampling when a TVOC reading of  $\geq 160$  ppb is measured. It has been observed that there are occurrences of TVOC readings  $\geq 160$  ppb where the benzene sampling was not initiated. The affected stations and periods are detailed in the monitoring systems daily reports. The equipment supplier has been notified of this issue and a corrective action will be implemented when provided.
- As discussed with the manufacturer of the H2S sensor, there is high likelihood that the H2S sensor has cross sensitivity with other sulfur compounds, including, but are not limited to, carbonyl sulfide, dimethyl sulfide, dimethyl disulfide, and methyl mercaptan. The potential for cross sensitivity with other reduced sulfur compounds must be considered when interpreting H2S levels recorded by the sensors.



## Perimeter Air Monitoring Weekly Report

Real-Time Multigas Monitoring  
Bristol Landfill Air Investigation

March 10 - March 16, 2025

Date	Daily Statistics	Bristol Met Station				
		Wind Direction degrees	Wind Speed mph	Temperature °F	Relative Humidity %	Barometric Pressure mbar
March 10, 2025	Minimum		0.0	33.7	22.3	942.4
	Maximum		13.0	62.2	65.6	949.2
	Average	196.6	3.3	47.6	41.4	945.6
March 11, 2025	Minimum		0.0	35.8	24.0	944.2
	Maximum		13.0	68.6	64.9	947.9
	Average	191.3	2.2	52.5	41.2	945.7
March 12, 2025	Minimum		0.0	42.0	17.8	943.2
	Maximum		15.0	73.8	57.5	948.3
	Average	195.3	2.5	59.0	36.6	946.1
March 13, 2025	Minimum		0.0	43.6	33.3	944.8
	Maximum		10.0	71.0	69.0	947.8
	Average	149.2	1.9	58.4	47.4	946.4
March 14, 2025	Minimum		0.0	46.8	25.7	944.9
	Maximum		18.0	76.4	79.6	949.4
	Average	141.5	4.6	60.7	55.1	947.2
March 15, 2025	Minimum		0.0	56.2	51.3	939.0
	Maximum		32.0	67.8	71.8	946.3
	Average	144.4	6.2	63.7	59.8	943.2
March 16, 2025	Minimum		0.0	57.3	33.3	935.4
	Maximum		23.0	70.4	93.7	946.1
	Average	214.3	6.3	64.0	64.0	939.2

### Notes:

- Dash/Blank data records indicate no data is available for that interval.
- Wind direction is a daily (24-hr) average value; with the origin of wind in degrees; clockwise from North calculated with vector averaging.