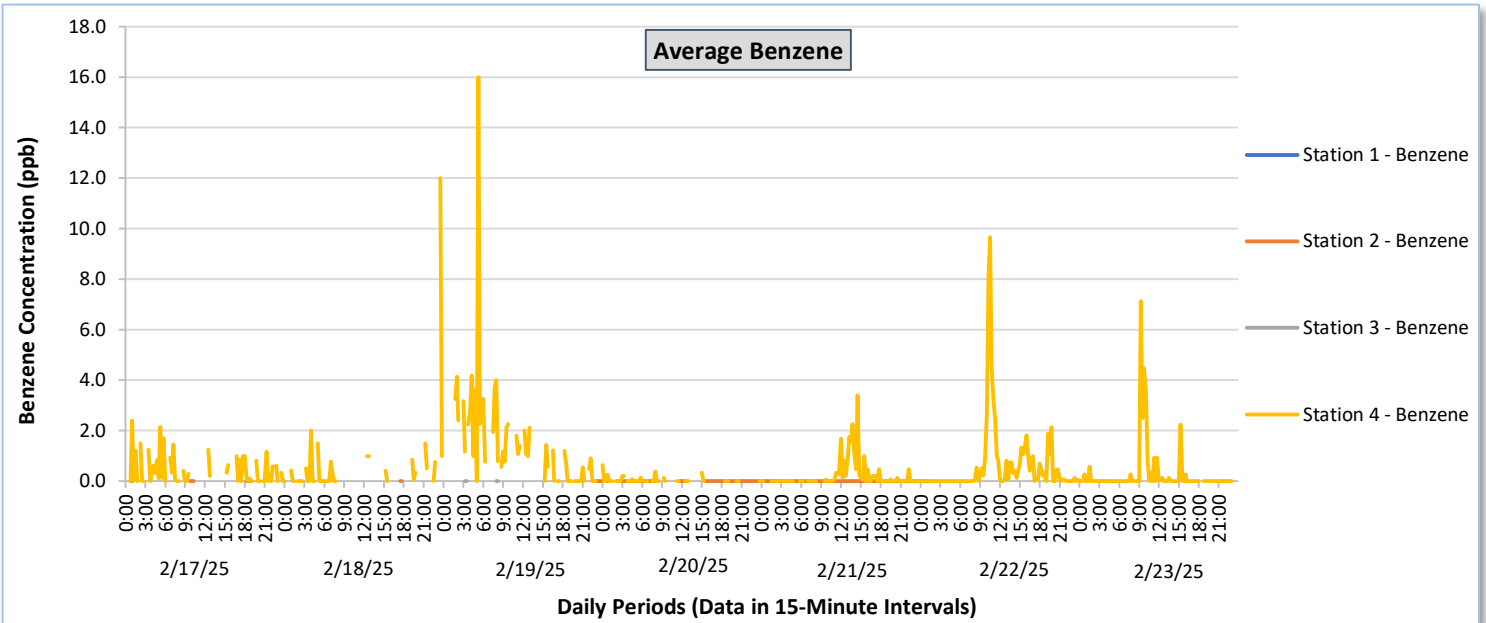
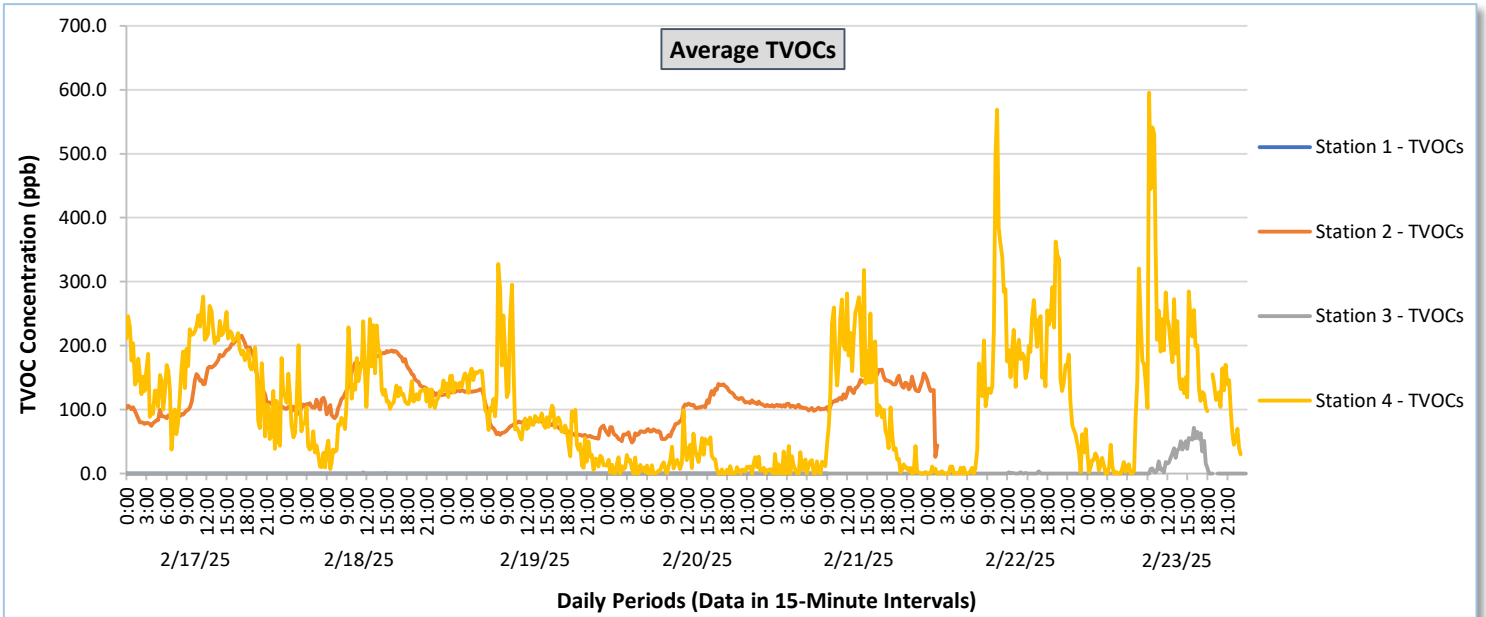




Perimeter Air Monitoring Weekly Report

Real-Time Multigas Monitoring
Bristol Landfill Air Investigation

February 17 - February 23, 2025

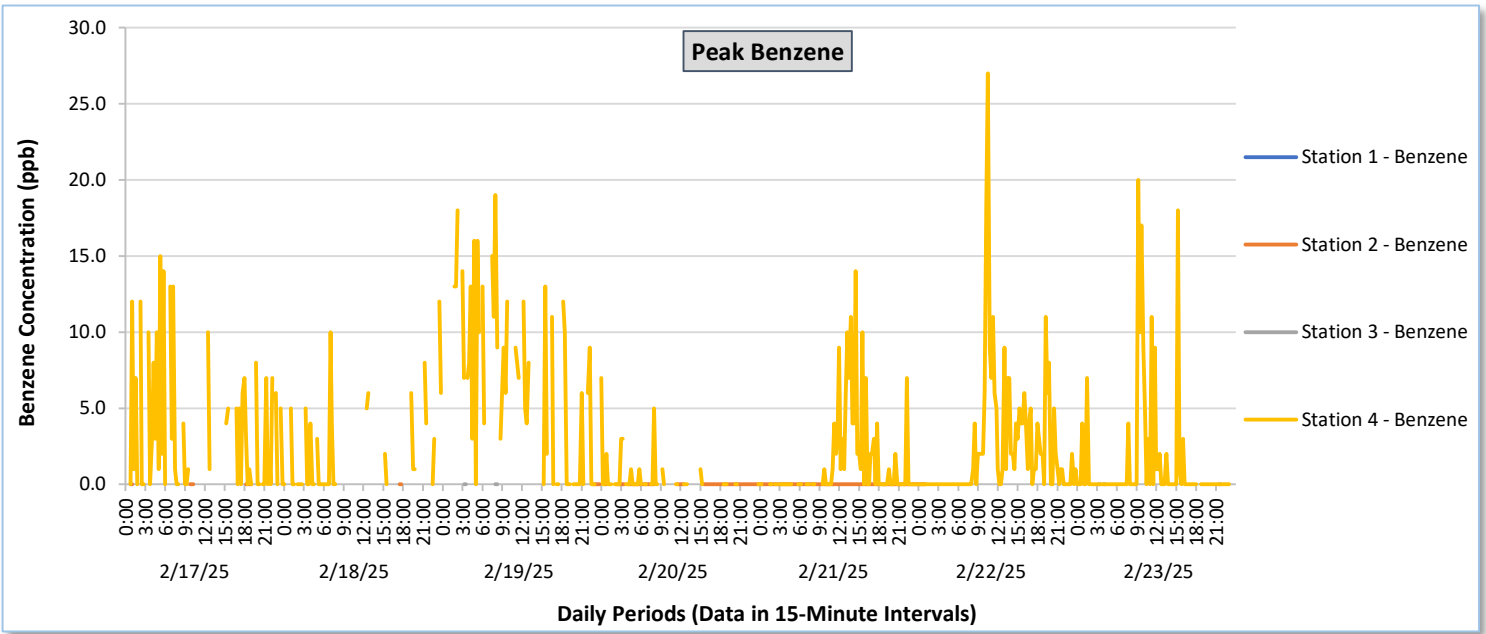
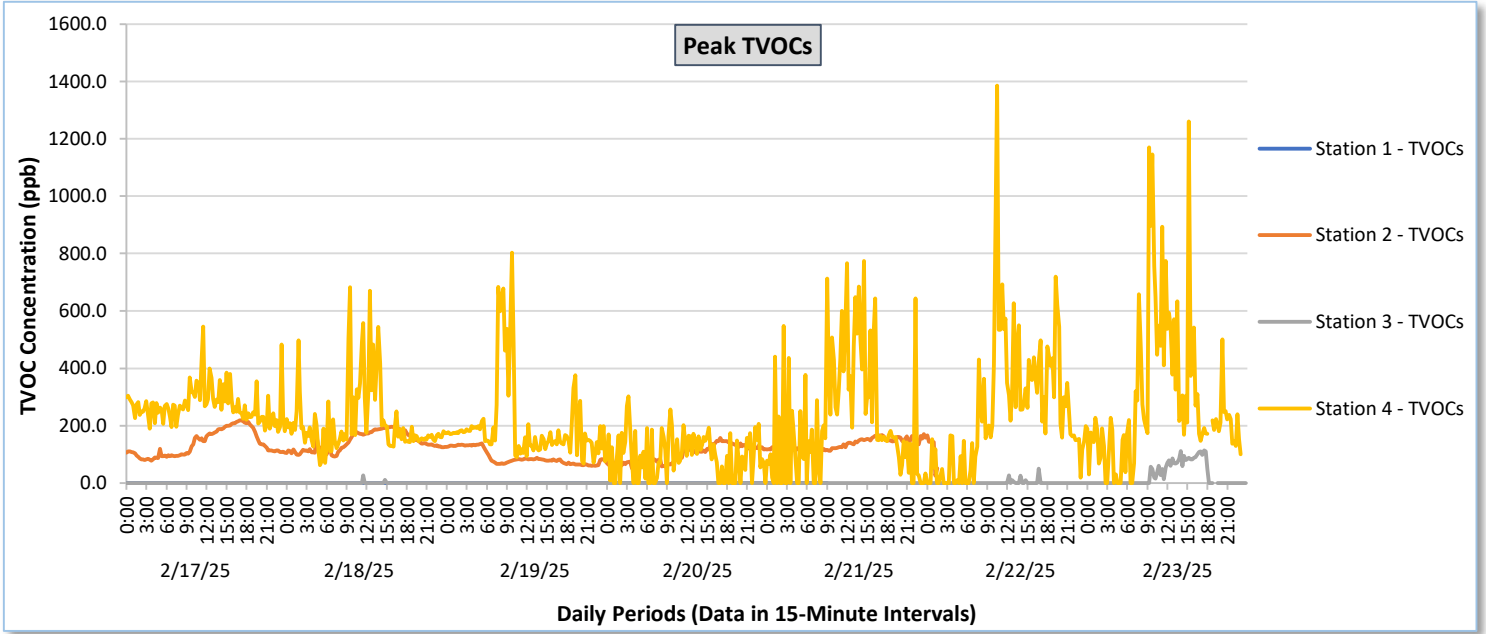




Perimeter Air Monitoring Weekly Report

Real-Time Multigas Monitoring
Bristol Landfill Air Investigation

February 17 - February 23, 2025

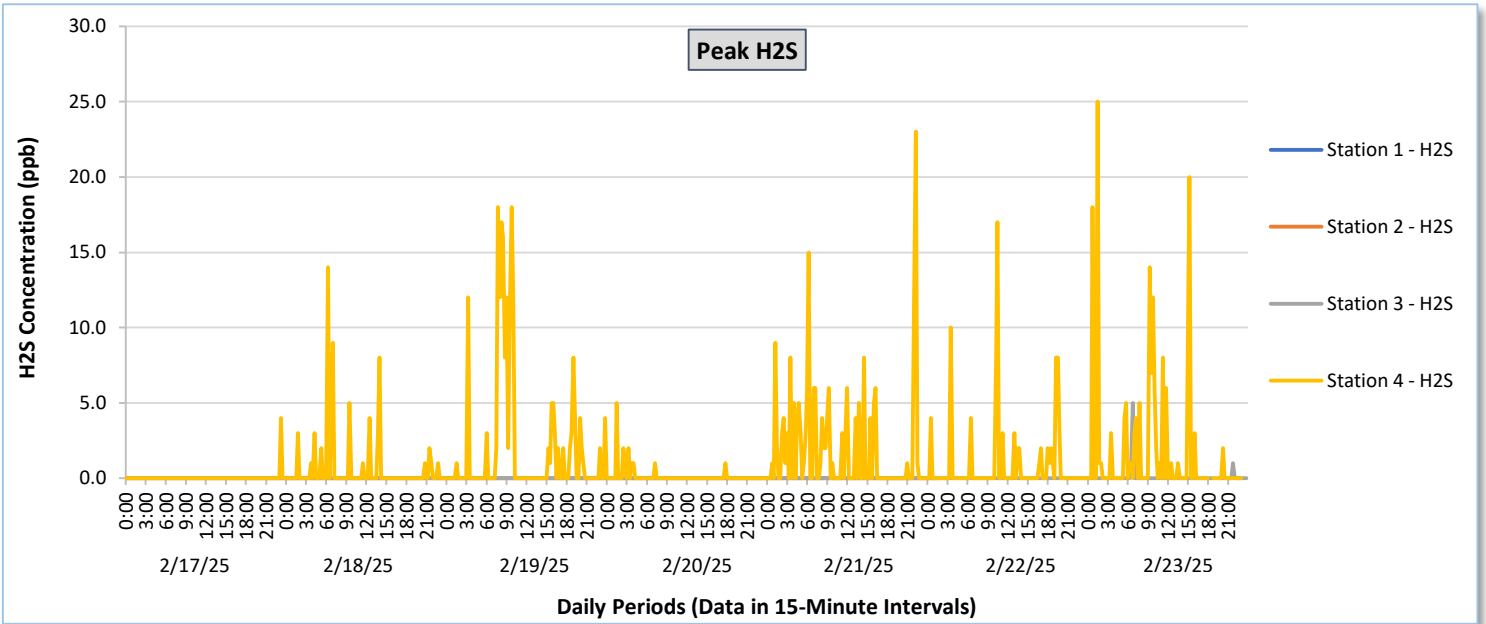
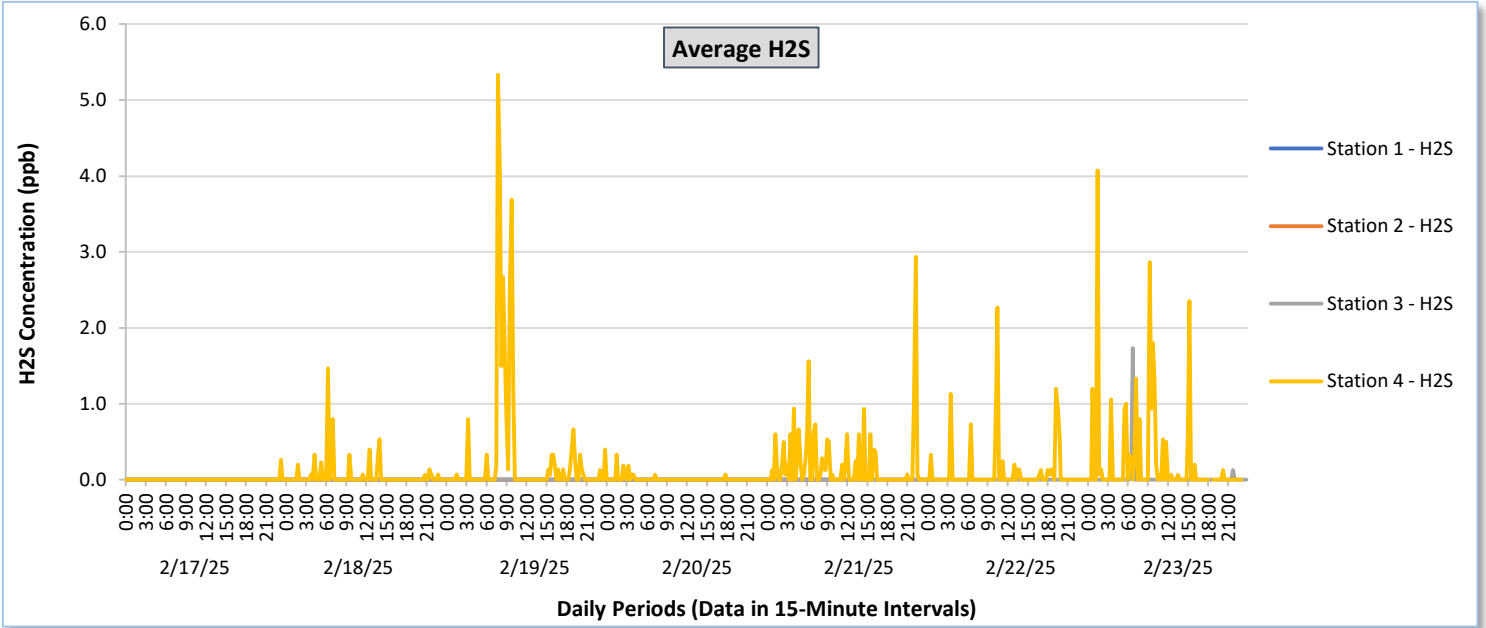




Perimeter Air Monitoring Weekly Report

Real-Time Multigas Monitoring
Bristol Landfill Air Investigation

February 17 - February 23, 2025





Perimeter Air Monitoring Weekly Report

Real-Time Multigas Monitoring
 Bristol Landfill Air Investigation
 February 17 - February 23, 2025

Date	Daily Statistics	Station 1						Station 2						Station 3						Station 4					
		TVOCs		H2S		Benzene		TVOCs		H2S		Benzene		TVOCs		H2S		Benzene		TVOCs		H2S		Benzene	
		Average ppb	Peak ppb	Average ppb	Peak ppb	Average ppb	Peak ppb	Average ppb	Peak ppb	Average ppb	Peak ppb	Average ppb	Peak ppb	Average ppb	Peak ppb	Average ppb	Peak ppb	Average ppb	Peak ppb	Average ppb	Peak ppb	Average ppb	Peak ppb	Average ppb	Peak ppb
		Values from 15-minute intervals.	1-minute max within each 15 minute interval.	Values from 15-minute intervals.	1-minute max within each 15 minute interval.	Values from 15-minute intervals.	1-minute max within each 15 minute interval.	Values from 15-minute intervals.	1-minute max within each 15 minute interval.	Values from 15-minute intervals.	1-minute max within each 15 minute interval.	Values from 15-minute intervals.	1-minute max within each 15 minute interval.	Values from 15-minute intervals.	1-minute max within each 15 minute interval.	Values from 15-minute intervals.	1-minute max within each 15 minute interval.	Values from 15-minute intervals.	1-minute max within each 15 minute interval.	Values from 15-minute intervals.	1-minute max within each 15 minute interval.	Values from 15-minute intervals.	1-minute max within each 15 minute interval.	Values from 15-minute intervals.	1-minute max within each 15 minute interval.
February 17, 2025	Minimum	0.0	0.0	0.0	0.0	-	-	74.6	78.0	0.0	0.0	0.0	0.0	0.0	0.0	0.0	0.0	-	-	37.5	179.0	0.0	0.0	0.0	0.0
	Maximum	0.0	0.0	0.0	0.0	-	-	215.6	219.0	0.0	0.0	0.0	0.0	0.0	0.0	0.0	0.0	-	-	276.6	545.0	0.3	4.0	2.4	15.0
	Average	0.0	0.0	0.0	0.0	-	-	130.5	136.5	0.0	0.0	0.0	0.0	0.0	0.0	0.0	0.0	-	-	164.6	271.2	0.0	0.0	0.5	3.7
February 18, 2025	Minimum	0.0	0.0	0.0	0.0	-	-	86.5	93.0	0.0	0.0	0.0	0.0	0.0	0.0	0.0	0.0	-	-	7.3	63.0	0.0	0.0	0.0	0.0
	Maximum	0.0	0.0	0.0	0.0	-	-	192.3	196.0	0.0	0.0	0.0	0.0	1.7	26.0	0.0	0.0	-	-	241.4	682.0	1.5	14.0	12.0	12.0
	Average	0.0	0.0	0.0	0.0	-	-	139.3	144.9	0.0	0.0	0.0	0.0	0.0	0.4	0.0	0.0	-	-	111.5	217.0	0.1	0.6	0.6	2.2
February 19, 2025	Minimum	0.0	0.0	0.0	0.0	-	-	54.5	60.0	0.0	0.0	-	-	0.0	0.0	0.0	0.0	-	-	5.7	68.0	0.0	0.0	0.0	0.0
	Maximum	0.0	0.0	0.0	0.0	-	-	131.7	138.0	0.0	0.0	-	-	0.0	0.0	0.0	0.0	-	-	327.7	803.0	5.3	18.0	16.0	19.0
	Average	0.0	0.0	0.0	0.0	-	-	85.2	89.1	0.0	0.0	-	-	0.0	0.0	0.0	0.0	-	-	100.4	202.1	0.3	2.0	1.5	6.6
February 20, 2025	Minimum	0.0	0.0	0.0	0.0	-	-	48.3	52.0	0.0	0.0	-	-	0.0	0.0	0.0	0.0	-	-	0.0	0.0	0.0	0.0	0.0	0.0
	Maximum	0.0	0.0	0.0	0.0	-	-	139.8	158.0	0.0	0.0	-	-	0.0	0.0	0.0	0.0	-	-	98.6	302.0	0.3	5.0	0.6	7.0
	Average	0.0	0.0	0.0	0.0	-	-	91.1	100.7	0.0	0.0	-	-	0.0	0.0	0.0	0.0	-	-	15.3	98.9	0.0	0.1	0.1	0.5
February 21, 2025	Minimum	0.0	0.0	0.0	0.0	-	-	97.2	108.0	0.0	0.0	0.0	0.0	0.0	0.0	0.0	0.0	-	-	0.0	0.0	0.0	0.0	0.0	0.0
	Maximum	0.0	0.0	0.0	0.0	-	-	162.9	171.0	0.0	0.0	0.0	0.0	0.0	0.0	0.0	0.0	-	-	318.1	774.0	2.9	23.0	3.4	14.0
	Average	0.0	0.0	0.0	0.0	-	-	124.5	135.4	0.0	0.0	0.0	0.0	0.0	0.0	0.0	0.0	-	-	76.6	224.3	0.2	1.9	0.2	1.6
February 22, 2025	Minimum	-	-	-	-	-	-	26.0	26.0	0.0	0.0	0.0	0.0	0.0	0.0	0.0	0.0	-	-	0.0	0.0	0.0	0.0	0.0	0.0
	Maximum	-	-	-	-	-	-	145.1	166.0	0.0	0.0	0.0	0.0	3.3	50.0	0.0	0.0	-	-	568.9	1,386.0	2.3	17.0	9.7	27.0
	Average	-	-	-	-	-	-	105.8	116.6	0.0	0.0	0.0	0.0	0.1	1.3	0.0	0.0	-	-	132.8	254.9	0.1	0.8	0.6	2.3
February 23, 2025	Minimum	-	-	-	-	-	-	-	-	-	-	-	-	0.0	0.0	0.0	0.0	-	-	0.0	0.0	0.0	0.0	0.0	0.0
	Maximum	-	-	-	-	-	-	-	-	-	-	-	-	71.4	114.0	1.7	5.0	-	-	595.2	1,261.0	4.1	25.0	7.1	20.0
	Average	-	-	-	-	-	-	-	-	-	-	-	-	11.8	26.8	0.0	0.1	-	-	131.1	294.3	0.3	1.8	0.3	1.4

Notes:

- Data records with a dash indicate no data is available for that interval.
- Calibration readings and data produced during periods of sensor downtime and/or maintenance are excluded from the report.
- The CTair monitoring systems at each station are programmed to initiate benzene sampling when a TVOC reading of ≥ 160 ppb is measured. It has been observed that there are occurrences of TVOC readings ≥ 160 ppb where the benzene sampling was not initiated. The affected stations and periods are detailed in the monitoring systems daily reports. The equipment supplier has been notified of this issue and a corrective action will be implemented when provided.
- As discussed with the manufacturer of the H2S sensor, there is high likelihood that the H2S sensor has cross sensitivity with other sulfur compounds, including, but are not limited to, carbonyl sulfide, dimethyl sulfide, dimethyl disulfide, and methyl mercaptan. The potential for cross sensitivity with other reduced sulfur compounds must be considered when interpreting H2S levels recorded by the sensors.
- Station 1 shut down on 2/21/2025 and is scheduled for repair.
- Station 2 shut down on 2/22/2025 and is scheduled for repair.



Perimeter Air Monitoring Weekly Report

Real-Time Multigas Monitoring
Bristol Landfill Air Investigation

February 17 - February 23, 2025

Date	Daily Statistics	Bristol Met Station				
		Wind Direction degrees	Wind Speed mph	Temperature °F	Relative Humidity %	Barometric Pressure mbar
February 17, 2025	Minimum		0.0	24.0	47.2	950.1
	Maximum		13.0	35.3	85.5	956.4
	Average	245.7	3.8	28.5	65.4	954.3
February 18, 2025	Minimum		0.0	25.0	47.9	954.4
	Maximum		11.0	38.0	81.6	957.5
	Average	222.4	2.6	31.3	65.0	955.8
February 19, 2025	Minimum		0.0	20.4	67.8	950.8
	Maximum		11.0	32.4	93.1	955.7
	Average	237.6	2.7	28.5	85.1	953.4
February 20, 2025	Minimum		0.0	15.8	56.4	951.2
	Maximum		20.0	21.4	91.2	962.4
	Average	293.7	4.1	17.9	73.9	956.0
February 21, 2025	Minimum		0.0	14.9	51.3	-
	Maximum		7.0	32.4	78.7	-
	Average	228.2	2.0	21.7	67.9	-
February 22, 2025	Minimum		0.0	16.5	36.7	-
	Maximum		17.0	42.5	85.6	-
	Average	156.0	2.8	29.8	61.6	-
February 23, 2025	Minimum		0.0	23.9	36.3	-
	Maximum		10.0	47.4	80.3	-
	Average	179.2	1.7	34.9	57.5	-

Notes:

- Dash/Blank data records indicate no data is available for that interval.
- Wind direction is a daily (24-hr) average value; with the origin of wind in degrees; clockwise from North calculated with vector averaging.