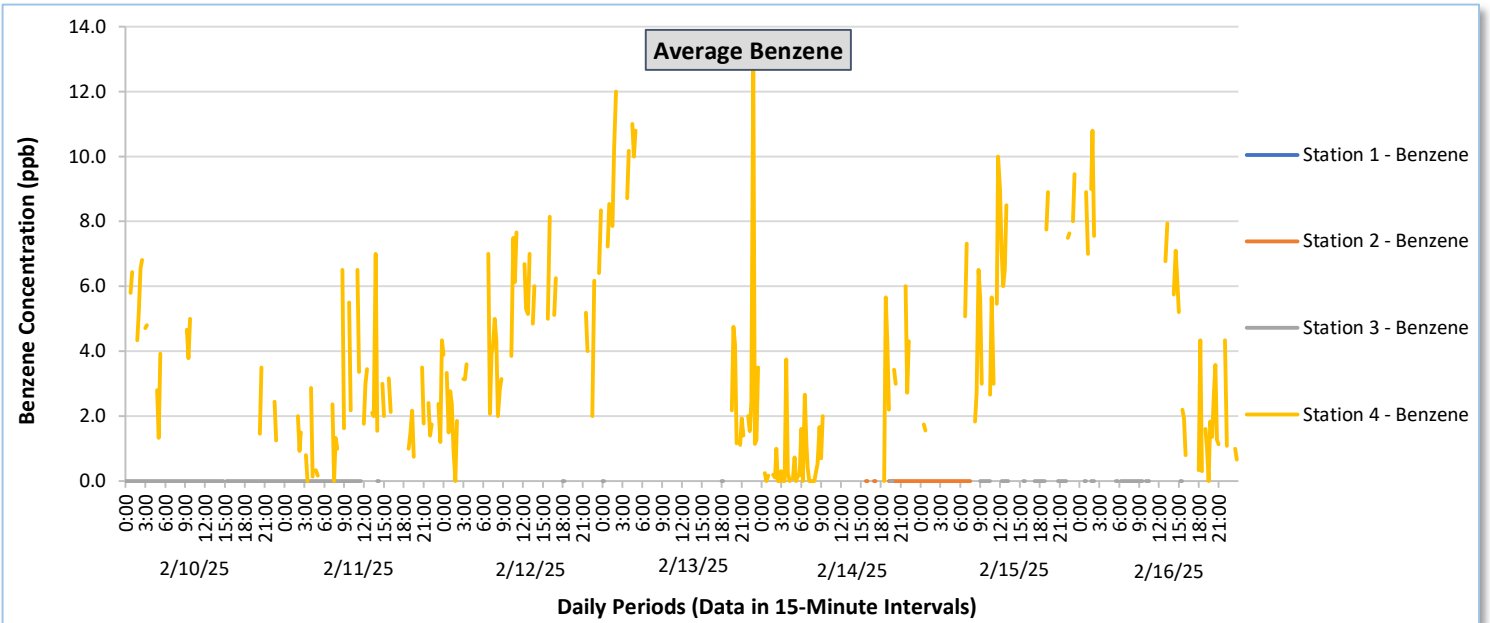
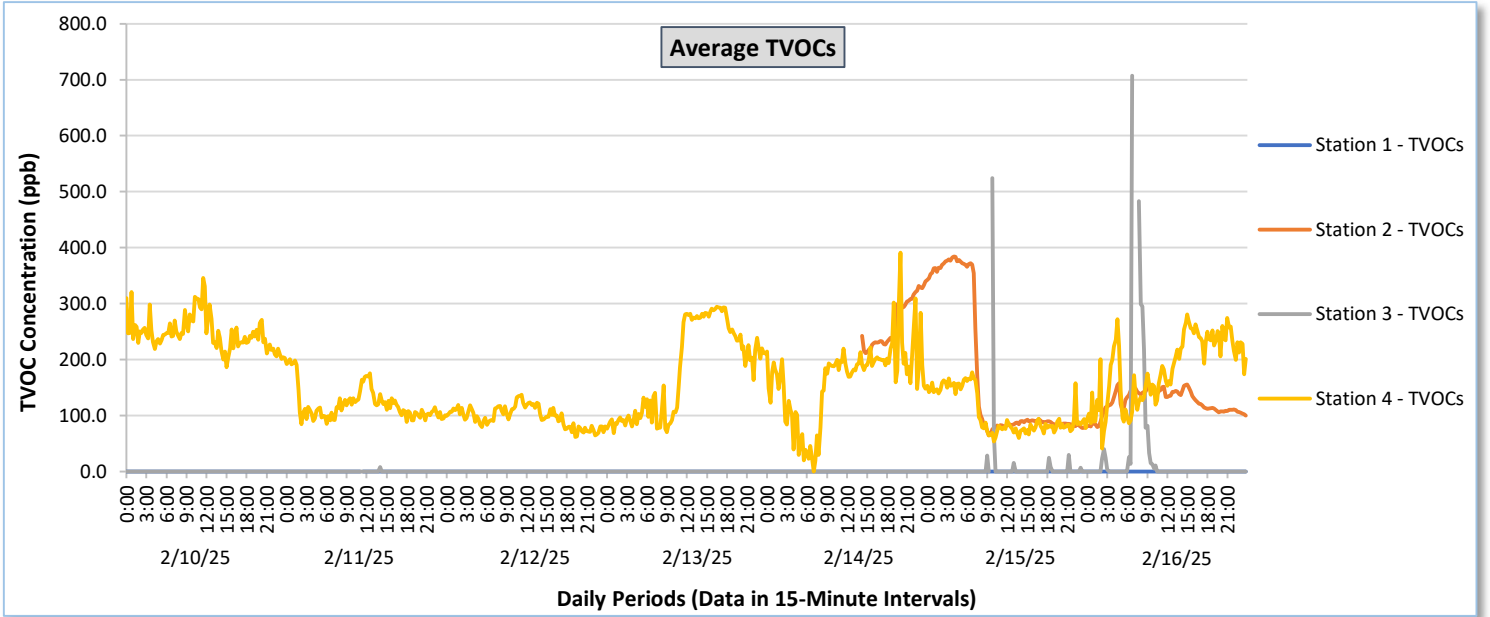




Perimeter Air Monitoring Weekly Report

Real-Time Multigas Monitoring
Bristol Landfill Air Investigation

February 10 - February 16, 2025

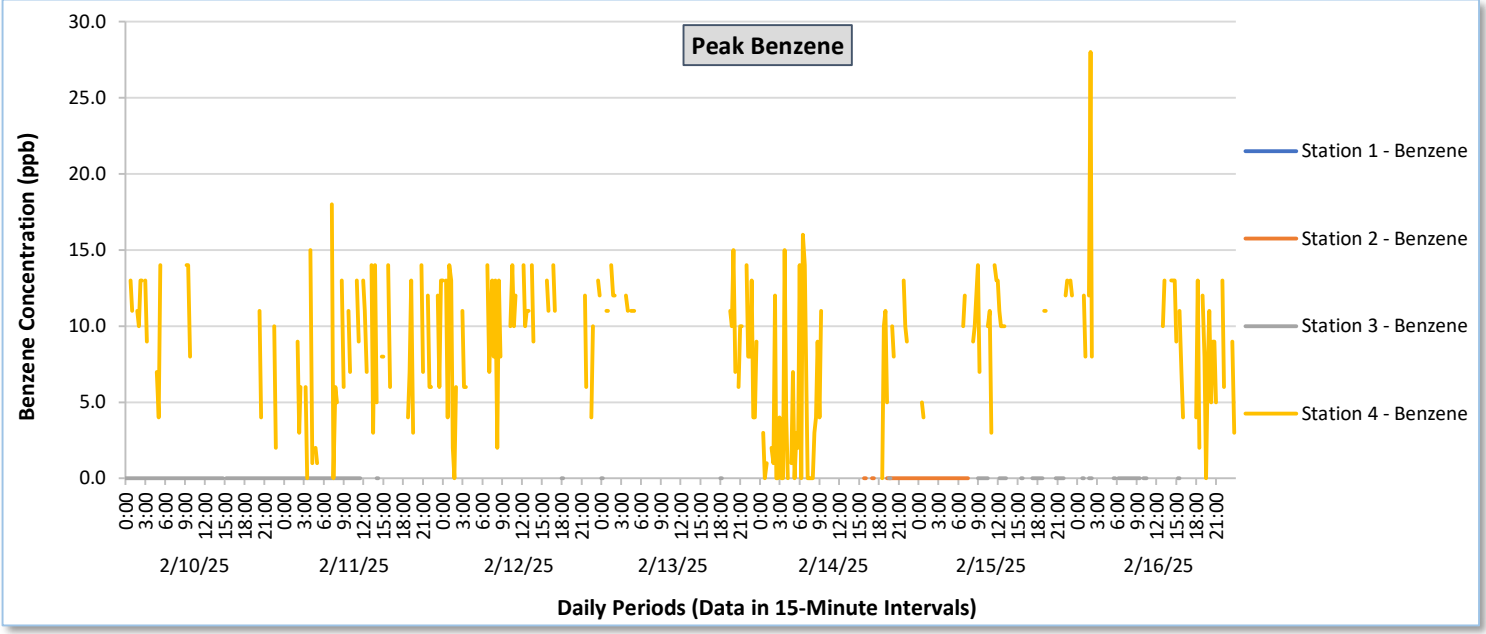
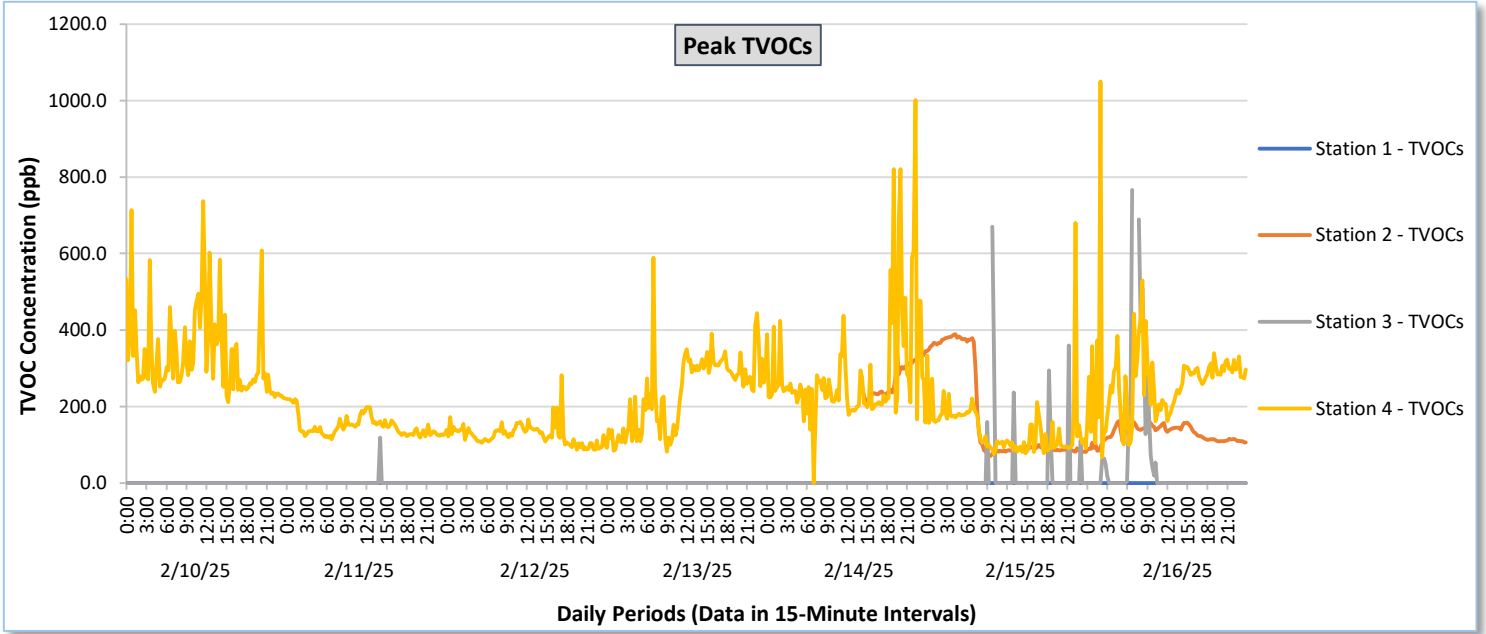




Perimeter Air Monitoring Weekly Report

Real-Time Multigas Monitoring
Bristol Landfill Air Investigation

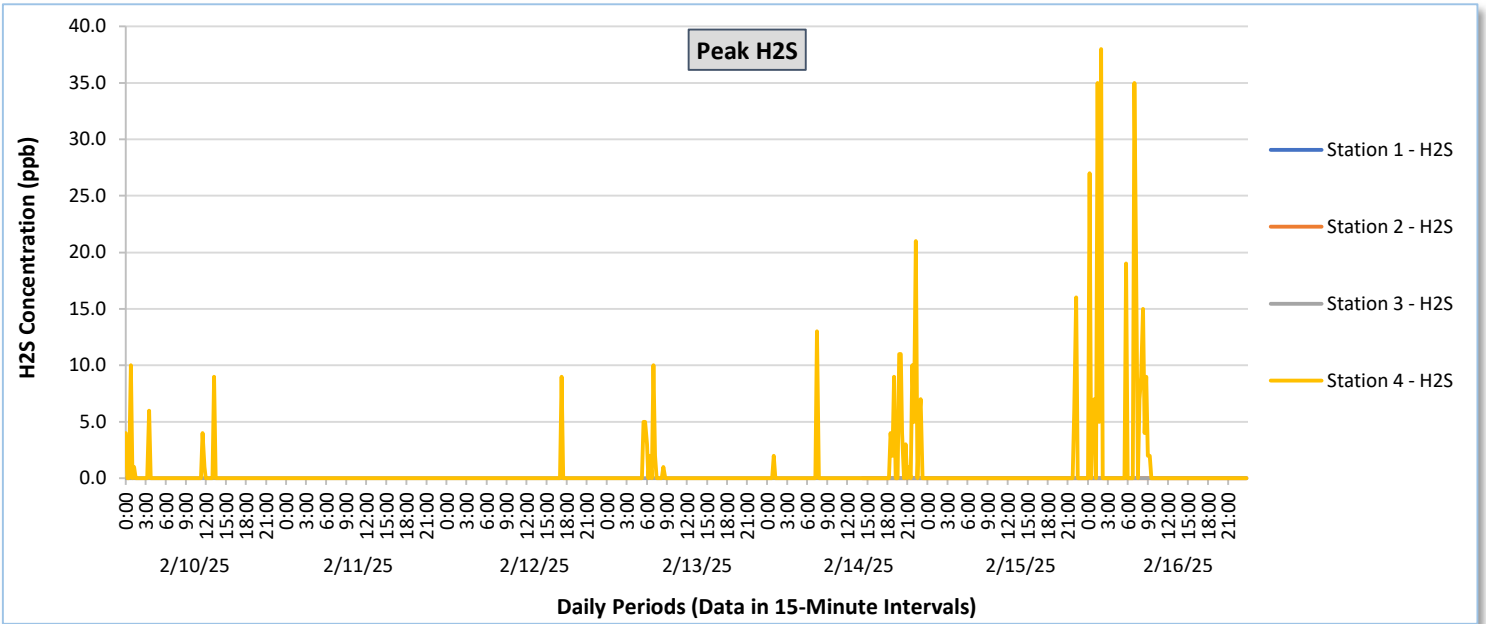
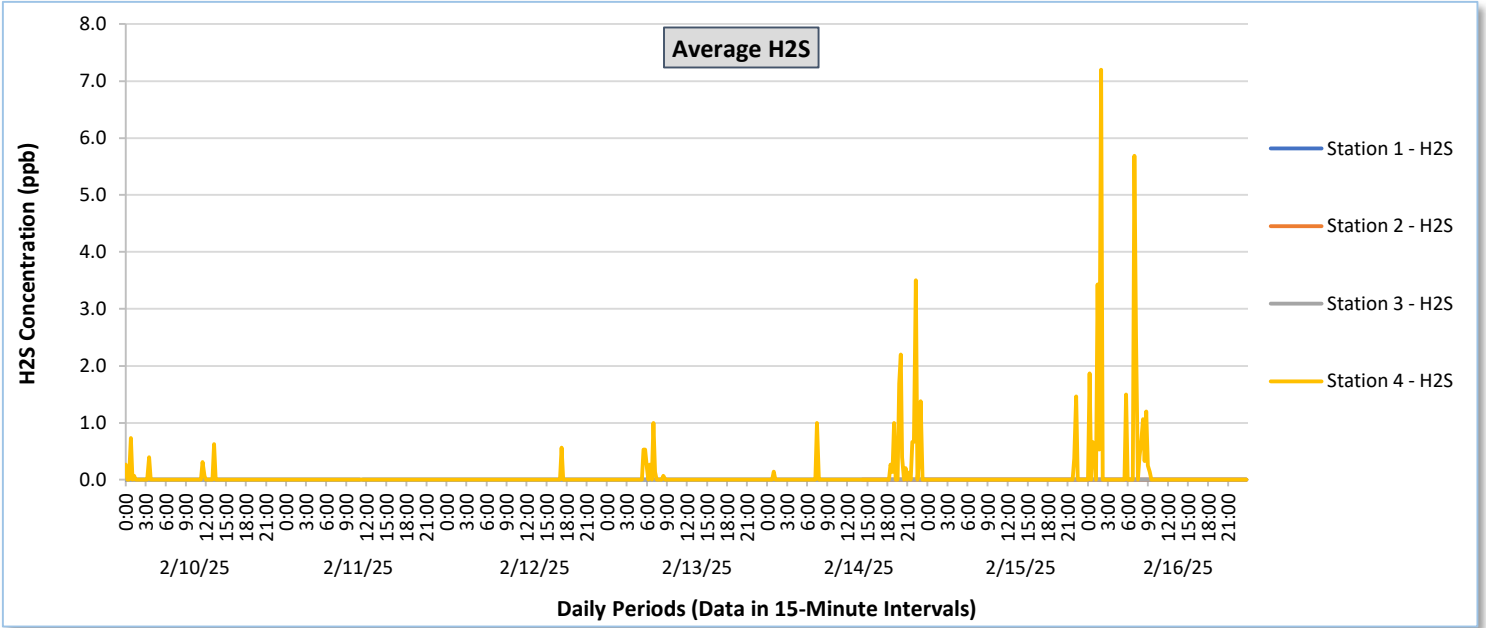
February 10 - February 16, 2025





Perimeter Air Monitoring Weekly Report

Real-Time Multigas Monitoring
Bristol Landfill Air Investigation
February 10 - February 16, 2025





Perimeter Air Monitoring Weekly Report

Real-Time Multigas Monitoring
Bristol Landfill Air Investigation
February 10 - February 16, 2025

Date	Daily Statistics	Station 1						Station 2						Station 3						Station 4						
		TVOCs		H2S		Benzene		TVOCs		H2S		Benzene		TVOCs		H2S		Benzene		TVOCs		H2S		Benzene		
		Average ppb	Peak ppb	Average ppb	Peak ppb	Average ppb	Peak ppb	Average ppb	Peak ppb	Average ppb	Peak ppb	Average ppb	Peak ppb	Average ppb	Peak ppb	Average ppb	Peak ppb	Average ppb	Peak ppb	Average ppb	Peak ppb	Average ppb	Peak ppb	Average ppb	Peak ppb	
		Values from 15-minute intervals.	1-minute max within each 15 minute interval.	Values from 15-minute intervals.	1-minute max within each 15 minute interval.	Values from 15-minute intervals.	1-minute max within each 15 minute interval.	Values from 15-minute intervals.	1-minute max within each 15 minute interval.	Values from 15-minute intervals.	1-minute max within each 15 minute interval.	Values from 15-minute intervals.	1-minute max within each 15 minute interval.	Values from 15-minute intervals.	1-minute max within each 15 minute interval.	Values from 15-minute intervals.	1-minute max within each 15 minute interval.	Values from 15-minute intervals.	1-minute max within each 15 minute interval.	Values from 15-minute intervals.	1-minute max within each 15 minute interval.	Values from 15-minute intervals.	1-minute max within each 15 minute interval.	Values from 15-minute intervals.	1-minute max within each 15 minute interval.	
February 10, 2025	Minimum	0.0	0.0	0.0	0.0	-	-	-	-	-	-	-	-	-	0.0	0.0	0.0	0.0	-	-	186.8	212.0	0.0	0.0	1.3	2.0
	Maximum	0.0	0.0	0.0	0.0	-	-	-	-	-	-	-	-	-	0.0	0.0	0.0	0.0	-	-	345.9	737.0	0.7	10.0	8.8	16.0
	Average	0.0	0.0	0.0	0.0	-	-	-	-	-	-	-	-	-	0.0	0.0	0.0	0.0	-	-	246.5	333.3	0.0	0.4	4.5	10.6
February 11, 2025	Minimum	0.0	0.0	0.0	0.0	-	-	-	-	-	-	-	-	0.0	0.0	0.0	0.0	-	-	84.7	115.0	0.0	0.0	1.0	5.0	
	Maximum	0.0	0.0	0.0	0.0	-	-	-	-	-	-	-	-	7.9	119.0	0.0	0.0	-	-	200.7	220.0	0.0	0.0	6.5	14.0	
	Average	0.0	0.0	0.0	0.0	-	-	-	-	-	-	-	-	0.1	1.2	0.0	0.0	-	-	120.4	149.0	0.0	0.0	2.8	9.1	
February 12, 2025	Minimum	0.0	0.0	0.0	0.0	-	-	-	-	-	-	-	-	0.0	0.0	0.0	0.0	-	-	61.1	87.0	0.0	0.0	3.3	11.0	
	Maximum	0.0	0.0	0.0	0.0	-	-	-	-	-	-	-	-	0.0	0.0	0.0	0.0	-	-	137.3	282.0	0.6	9.0	8.1	14.0	
	Average	0.0	0.0	0.0	0.0	-	-	-	-	-	-	-	-	0.0	0.0	0.0	0.0	-	-	97.7	126.1	0.0	0.1	6.1	12.7	
February 13, 2025	Minimum	0.0	0.0	0.0	0.0	-	-	-	-	-	-	-	-	0.0	0.0	0.0	0.0	-	-	68.5	82.0	0.0	0.0	1.1	4.0	
	Maximum	0.0	0.0	0.0	0.0	-	-	-	-	-	-	-	-	0.0	0.0	0.0	0.0	-	-	294.3	589.0	1.0	10.0	13.0	15.0	
	Average	0.0	0.0	0.0	0.0	-	-	-	-	-	-	-	-	0.0	0.0	0.0	0.0	-	-	181.9	237.7	0.0	0.3	3.0	9.2	
February 14, 2025	Minimum	0.0	0.0	0.0	0.0	-	-	211.6	213.0	0.0	0.0	0.0	0.0	0.0	0.0	0.0	0.0	-	-	0.0	0.0	0.0	0.0	0.0	0.0	
	Maximum	0.0	0.0	0.0	0.0	-	-	339.6	344.0	0.0	0.0	0.0	0.0	0.0	0.0	0.0	0.0	-	-	390.7	1,001.0	3.5	21.0	6.0	16.0	
	Average	0.0	0.0	0.0	0.0	-	-	266.9	273.5	0.0	0.0	0.0	0.0	0.0	0.0	0.0	0.0	-	-	164.2	285.1	0.1	1.1	1.2	5.0	
February 15, 2025	Minimum	0.0	0.0	0.0	0.0	-	-	64.8	70.0	0.0	0.0	0.0	0.0	0.0	0.0	0.0	0.0	0.0	0.0	53.3	76.0	0.0	0.0	1.6	3.0	
	Maximum	0.0	0.0	0.0	0.0	-	-	384.3	389.0	0.0	0.0	0.0	0.0	524.2	670.0	0.0	0.0	0.0	0.0	177.7	680.0	1.5	16.0	10.0	14.0	
	Average	0.0	0.0	0.0	0.0	-	-	173.3	177.2	0.0	0.0	0.0	0.0	7.4	24.4	0.0	0.0	0.0	0.0	104.1	140.3	0.0	0.2	6.2	10.5	
February 16, 2025	Minimum	0.0	0.0	0.0	0.0	-	-	79.4	84.0	0.0	0.0	0.0	0.0	0.0	0.0	0.0	0.0	0.0	0.0	41.3	68.0	0.0	0.0	0.0	0.0	
	Maximum	0.0	0.0	0.0	0.0	-	-	157.5	162.0	0.0	0.0	0.0	0.0	707.3	766.0	0.0	0.0	0.0	0.0	280.6	1,050.0	7.2	38.0	10.8	28.0	
	Average	0.0	0.0	0.0	0.0	-	-	124.1	128.0	0.0	0.0	-	-	25.5	44.0	0.0	0.0	0.0	0.0	183.7	266.8	0.3	2.5	3.7	9.4	

Notes:

- Data records with a dash indicate no data is available for that interval.
- Calibration readings and data produced during periods of sensor downtime and/or maintenance are excluded from the report.
- Station 2 shut down 7/30/2024 and returned online 2/14/2025.
- The CTair monitoring systems at each station are programmed to initiate benzene sampling when a TVOC reading of ≥ 160 ppb is measured. It has been observed that there are occurrences of TVOC readings ≥ 160 ppb where the benzene sampling was not initiated. The affected stations and periods are detailed in the monitoring systems daily reports. The equipment supplier has been notified of this issue and a corrective action will be implemented when provided.
- As discussed with the manufacturer of the H2S sensor, there is high likelihood that the H2S sensor has cross sensitivity with other sulfur compounds, including, but are not limited to, carbonyl sulfide, dimethyl sulfide, dimethyl disulfide, and methyl mercaptan. The potential for cross sensitivity with other reduced sulfur compounds must be considered when interpreting H2S levels recorded by the sensors.
- Station 3 recorded a TVOC event with a measured TVOC value of approximately 71,000 parts per billion (ppb) beginning on 2/15/2025 through 2/16/2025. This value affected the scaling of the TVOC graphs which resulted in no resolution for the TVOC data recorded at the Stations 1, 3, and 4 for the balance of this reporting period. As a result, the Station 3 TVOC event data has been excluded from this report to display meaningful data for Stations 1, 3, and 4. The complete Station 3 TVOC data for the period ending 2/16/2025 is presented separately.



Perimeter Air Monitoring Weekly Report

Real-Time Multigas Monitoring
Bristol Landfill Air Investigation

February 10 - February 16, 2025

Date	Daily Statistics	Bristol Met Station				
		Wind Direction degrees	Wind Speed mph	Temperature °F	Relative Humidity %	Barometric Pressure mbar
February 10, 2025	Minimum		0.0	33.8	36.6	955.9
	Maximum		12.0	45.9	86.4	961.7
	Average	222.3	3.7	38.3	64.0	959.1
February 11, 2025	Minimum		1.0	32.5	47.8	945.6
	Maximum		15.0	37.9	94.3	957.9
	Average	67.2	6.2	34.4	88.3	951.9
February 12, 2025	Minimum		1.0	35.3	90.0	944.4
	Maximum		15.0	41.6	95.5	948.3
	Average	86.9	5.4	37.7	93.9	946.1
February 13, 2025	Minimum		0.0	30.3	54.3	940.6
	Maximum		19.0	51.6	97.2	964.5
	Average	223.4	5.1	43.1	80.7	951.6
February 14, 2025	Minimum		0.0	23.1	30.3	959.5
	Maximum		11.0	45.2	80.9	968.5
	Average	157.7	3.2	34.5	56.6	964.3
February 15, 2025	Minimum		0.0	35.2	40.8	939.6
	Maximum		16.0	44.1	95.4	959.4
	Average	126.8	4.3	40.6	79.0	950.8
February 16, 2025	Minimum		0.0	27.5	61.1	928.1
	Maximum		30.0	62.0	96.6	950.1
	Average	223.2	7.4	42.5	81.8	938.8

Notes:

- Dash/Blank data records indicate no data is available for that interval.
- Wind direction is a daily (24-hr) average value; with the origin of wind in degrees; clockwise from North calculated with vector averaging.