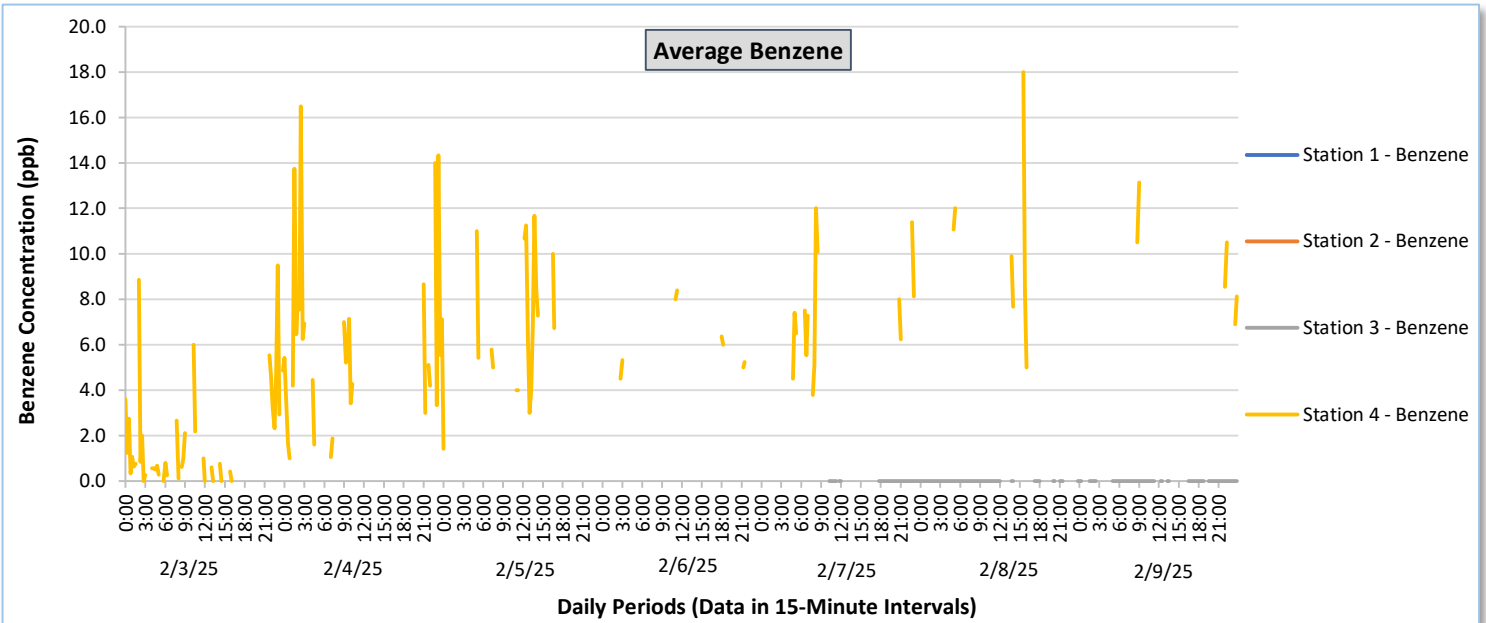
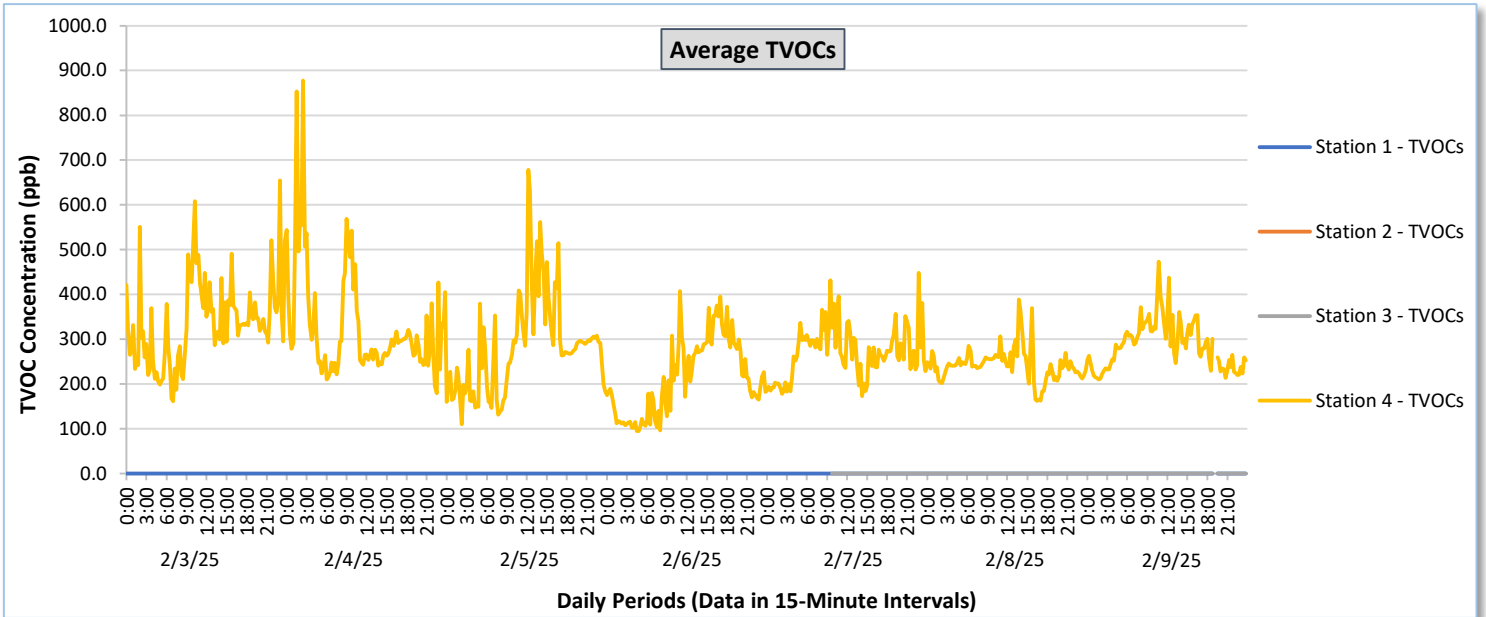




Perimeter Air Monitoring Weekly Report

Real-Time Multigas Monitoring
Bristol Landfill Air Investigation

February 3 - February 9, 2025

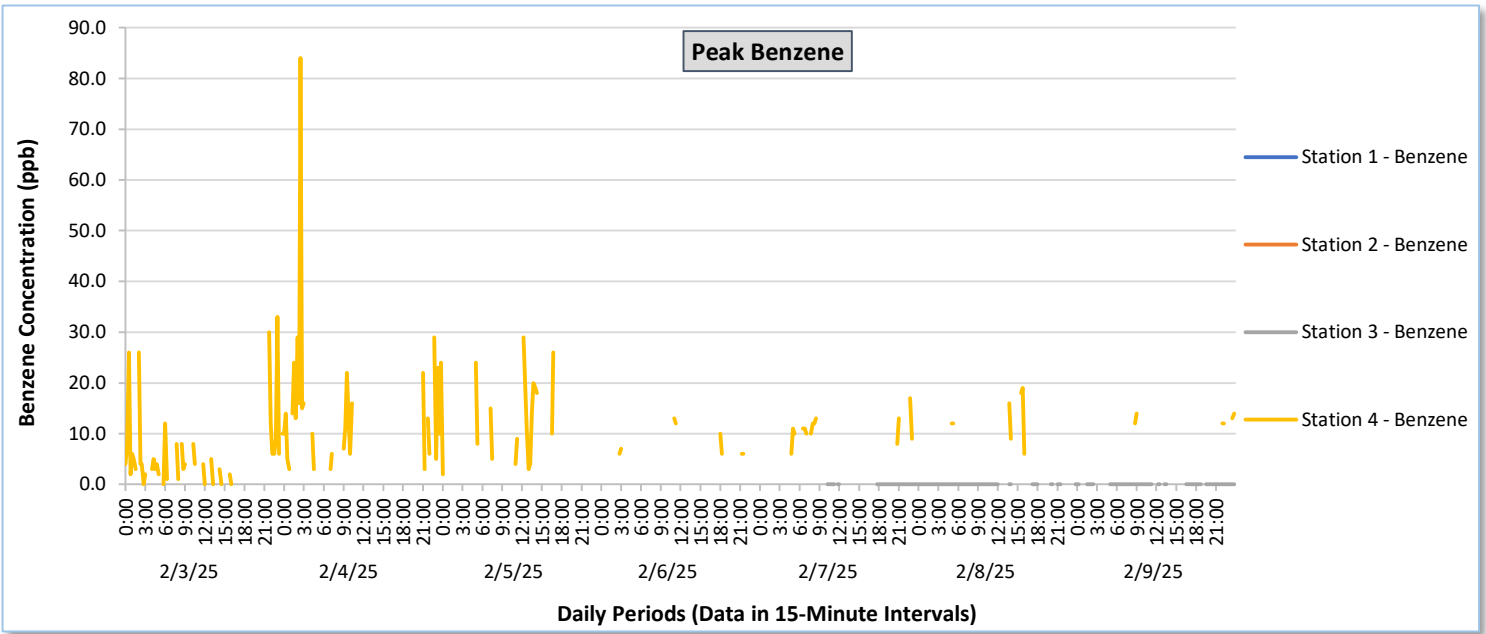
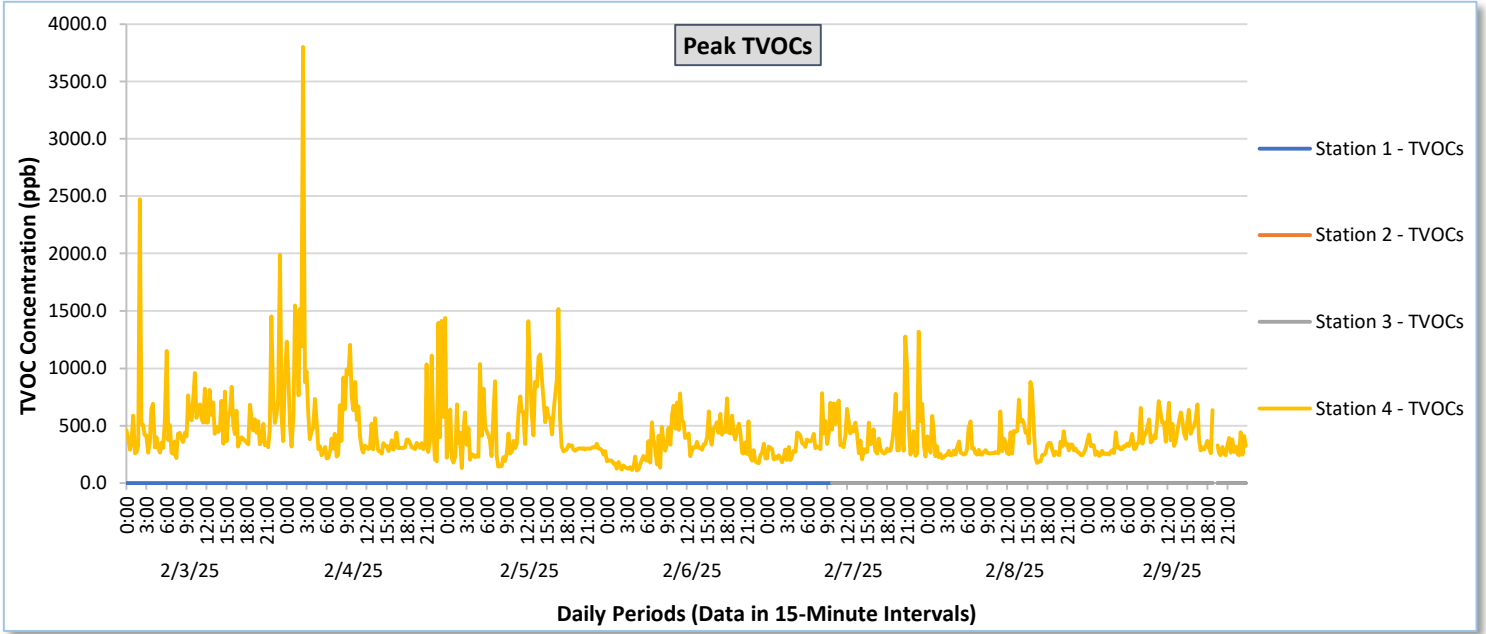




Perimeter Air Monitoring Weekly Report

Real-Time Multigas Monitoring
Bristol Landfill Air Investigation

February 3 - February 9, 2025

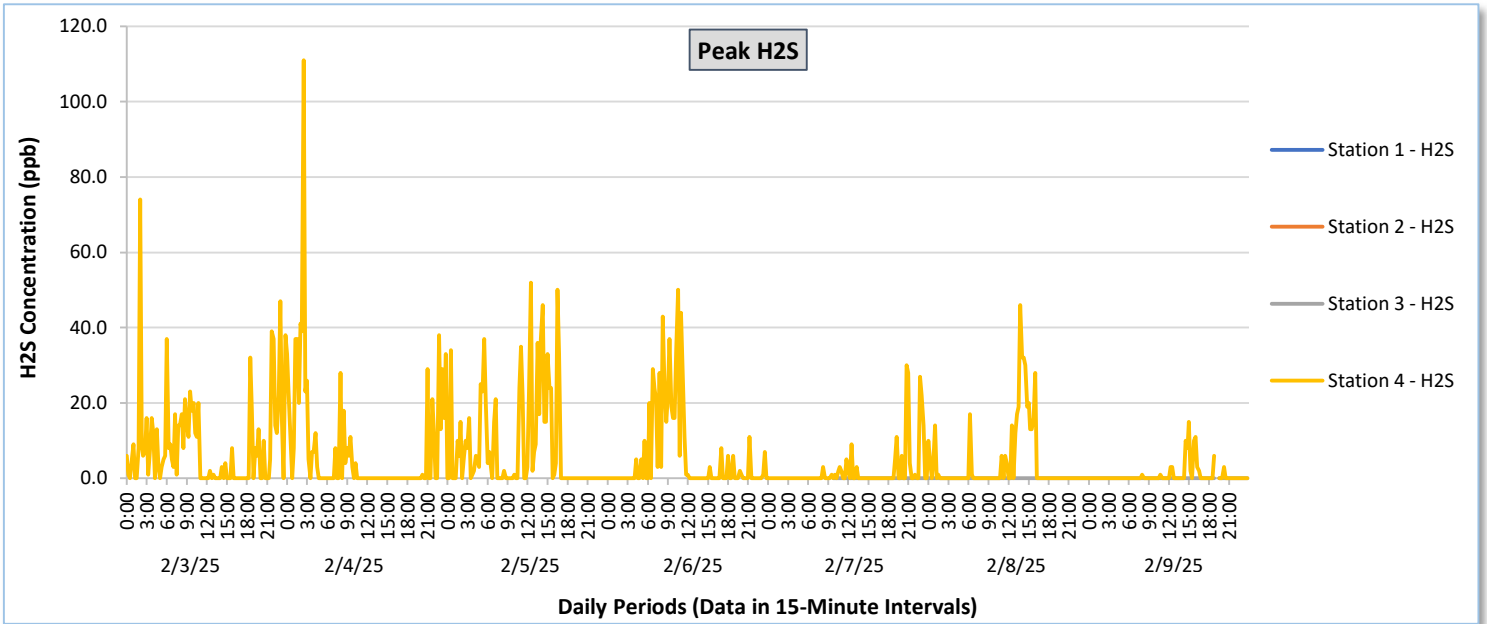
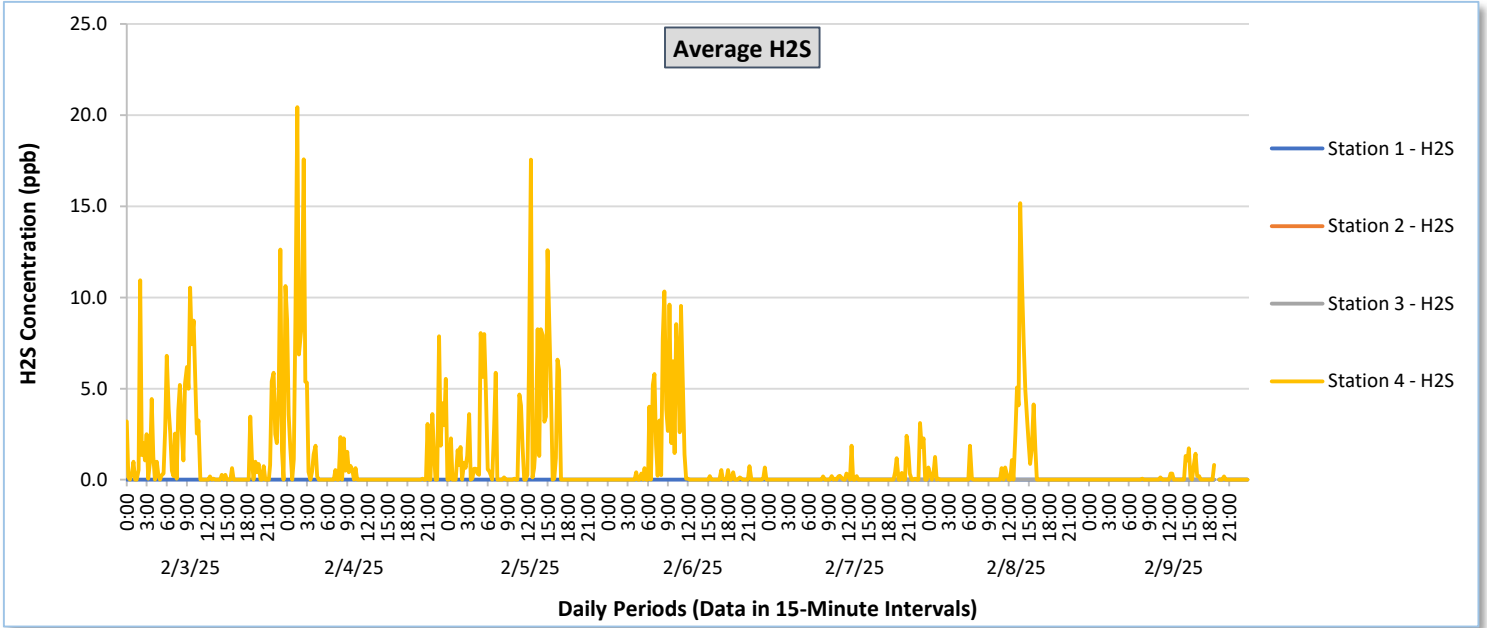




Perimeter Air Monitoring Weekly Report

Real-Time Multigas Monitoring
Bristol Landfill Air Investigation

February 3 - February 9, 2025





Perimeter Air Monitoring Weekly Report

Real-Time Multigas Monitoring
Bristol Landfill Air Investigation
February 3 - February 9, 2025

Date	Daily Statistics	Station 1						Station 2						Station 3						Station 4					
		TVOCs		H2S		Benzene		TVOCs		H2S		Benzene		TVOCs		H2S		Benzene		TVOCs		H2S		Benzene	
		Average ppb	Peak ppb	Average ppb	Peak ppb	Average ppb	Peak ppb	Average ppb	Peak ppb	Average ppb	Peak ppb	Average ppb	Peak ppb	Average ppb	Peak ppb	Average ppb	Peak ppb	Average ppb	Peak ppb	Average ppb	Peak ppb	Average ppb	Peak ppb	Average ppb	Peak ppb
		Values from 15-minute intervals.	1-minute max within each 15 minute interval.	Values from 15-minute intervals.	1-minute max within each 15 minute interval.	Values from 15-minute intervals.	1-minute max within each 15 minute interval.	Values from 15-minute intervals.	1-minute max within each 15 minute interval.	Values from 15-minute intervals.	1-minute max within each 15 minute interval.	Values from 15-minute intervals.	1-minute max within each 15 minute interval.	Values from 15-minute intervals.	1-minute max within each 15 minute interval.	Values from 15-minute intervals.	1-minute max within each 15 minute interval.	Values from 15-minute intervals.	1-minute max within each 15 minute interval.	Values from 15-minute intervals.	1-minute max within each 15 minute interval.	Values from 15-minute intervals.	1-minute max within each 15 minute interval.	Values from 15-minute intervals.	1-minute max within each 15 minute interval.
February 3, 2025	Minimum	0.0	0.0	0.0	0.0	-	-	-	-	-	-	-	-	-	-	-	-	-	161.9	217.0	0.0	0.0	0.0	0.0	
	Maximum	0.0	0.0	0.0	0.0	-	-	-	-	-	-	-	-	-	-	-	-	-	655.0	2,472.0	12.6	74.0	9.5	33.0	
	Average	0.0	0.0	0.0	0.0	-	-	-	-	-	-	-	-	-	-	-	-	-	338.1	539.8	1.8	8.6	1.9	6.5	
February 4, 2025	Minimum	0.0	0.0	0.0	0.0	-	-	-	-	-	-	-	-	-	-	-	-	-	179.3	191.0	0.0	0.0	1.0	3.0	
	Maximum	0.0	0.0	0.0	0.0	-	-	-	-	-	-	-	-	-	-	-	-	-	877.4	3,801.0	20.4	111.0	16.5	84.0	
	Average	0.0	0.0	0.0	0.0	-	-	-	-	-	-	-	-	-	-	-	-	-	329.2	563.4	1.5	7.6	6.0	15.4	
February 5, 2025	Minimum	0.0	0.0	0.0	0.0	-	-	-	-	-	-	-	-	-	-	-	-	-	109.7	131.0	0.0	0.0	1.4	2.0	
	Maximum	0.0	0.0	0.0	0.0	-	-	-	-	-	-	-	-	-	-	-	-	-	678.3	1,517.0	17.6	52.0	11.7	29.0	
	Average	0.0	0.0	0.0	0.0	-	-	-	-	-	-	-	-	-	-	-	-	-	283.6	453.5	1.7	8.3	6.7	13.2	
February 6, 2025	Minimum	0.0	0.0	0.0	0.0	-	-	-	-	-	-	-	-	-	-	-	-	-	94.8	108.0	0.0	0.0	4.5	6.0	
	Maximum	0.0	0.0	0.0	0.0	-	-	-	-	-	-	-	-	-	-	-	-	-	407.5	780.0	10.3	50.0	8.4	13.0	
	Average	0.0	0.0	0.0	0.0	-	-	-	-	-	-	-	-	-	-	-	-	-	213.7	332.6	1.1	5.9	6.1	8.3	
February 7, 2025	Minimum	0.0	0.0	0.0	0.0	-	-	-	-	-	-	-	-	0.0	0.0	0.0	0.0	-	-	173.2	182.0	0.0	0.0	3.8	6.0
	Maximum	0.0	0.0	0.0	0.0	-	-	-	-	-	-	-	-	0.0	0.0	0.0	0.0	-	-	448.2	1,318.0	3.1	30.0	12.0	17.0
	Average	0.0	0.0	0.0	0.0	-	-	-	-	-	-	-	-	0.0	0.0	0.0	0.0	-	-	270.2	398.5	0.2	1.9	7.4	11.3
February 8, 2025	Minimum	0.0	0.0	0.0	0.0	-	-	-	-	-	-	-	-	0.0	0.0	0.0	0.0	-	-	162.2	177.0	0.0	0.0	5.0	6.0
	Maximum	0.0	0.0	0.0	0.0	-	-	-	-	-	-	-	-	0.0	0.0	0.0	0.0	-	-	388.8	880.0	15.2	46.0	18.0	19.0
	Average	0.0	0.0	0.0	0.0	-	-	-	-	-	-	-	-	0.0	0.0	0.0	0.0	-	-	242.8	328.9	0.7	3.9	10.3	13.1
February 9, 2025	Minimum	0.0	0.0	0.0	0.0	-	-	-	-	-	-	-	-	0.0	0.0	0.0	0.0	-	-	209.4	236.0	0.0	0.0	6.9	12.0
	Maximum	0.0	0.0	0.0	0.0	-	-	-	-	-	-	-	-	0.0	0.0	0.0	0.0	-	-	472.8	714.0	1.7	15.0	13.1	14.0
	Average	0.0	0.0	0.0	0.0	-	-	-	-	-	-	-	-	0.0	0.0	0.0	0.0	-	-	286.3	381.3	0.1	0.8	9.9	13.0

Notes:

- Data records with a dash indicate no data is available for that interval.
- Calibration readings and data produced during periods of sensor downtime and/or maintenance are excluded from the report.
- Station 2 shut down 7/30/2024 and is undergoing maintenance.
- The CTair monitoring systems at each station are programmed to initiate benzene sampling when a TVOC reading of ≥ 160 ppb is measured. It has been observed that there are occurrences of TVOC readings ≥ 160 ppb where the benzene sampling was not initiated. The affected stations and periods are detailed in the monitoring systems daily reports. The equipment supplier has been notified of this issue and a corrective action will be implemented when provided.
- As discussed with the manufacturer of the H2S sensor, there is high likelihood that the H2S sensor has cross sensitivity with other sulfur compounds, including, but are not limited to, carbonyl sulfide, dimethyl sulfide, dimethyl disulfide, and methyl mercaptan. The potential for cross sensitivity with other reduced sulfur compounds must be considered when interpreting H2S levels recorded by the sensors.
- Station 3 went off line 1/28/2025 at 1400 through 2/7/2025 at 0944. Station 3 on-line 2/7/2025 at 0945 and on-line for the remainder of the period.



Perimeter Air Monitoring Weekly Report

Real-Time Multigas Monitoring
Bristol Landfill Air Investigation

February 3 - February 9, 2025

Date	Daily Statistics	Bristol Met Station				
		Wind Direction degrees	Wind Speed mph	Temperature °F	Relative Humidity %	Barometric Pressure mbar
February 3, 2025	Minimum		-	-	-	949.2
	Maximum		-	-	-	955.6
	Average	-	-	-	-	952.7
February 4, 2025	Minimum		-	-	-	950.2
	Maximum		-	-	-	955.0
	Average	-	-	-	-	953.0
February 5, 2025	Minimum		-	-	-	950.6
	Maximum		-	-	-	955.3
	Average	-	-	-	-	953.3
February 6, 2025	Minimum		-	-	-	946.6
	Maximum		-	-	-	950.9
	Average	-	-	-	-	948.0
February 7, 2025	Minimum		0.0	42.5	21.6	948.6
	Maximum		10.0	57.4	60.3	956.1
	Average	210.7	2.4	50.8	37.0	953.8
February 8, 2025	Minimum		0.0	44.4	52.6	945.0
	Maximum		25.0	69.7	76.2	953.1
	Average	157.1	4.9	55.3	65.6	949.0
February 9, 2025	Minimum		0.0	44.5	44.9	944.8
	Maximum		17.0	64.2	86.4	956.2
	Average	268.8	4.4	52.9	71.0	952.0

Notes:

- Dash/Blank data records indicate no data is available for that interval.
- Wind direction is a daily (24-hr) average value; with the origin of wind in degrees; clockwise from North calculated with vector averaging.
- The Met Station went offline 1/28/2025, then returned online 2/7/2025.