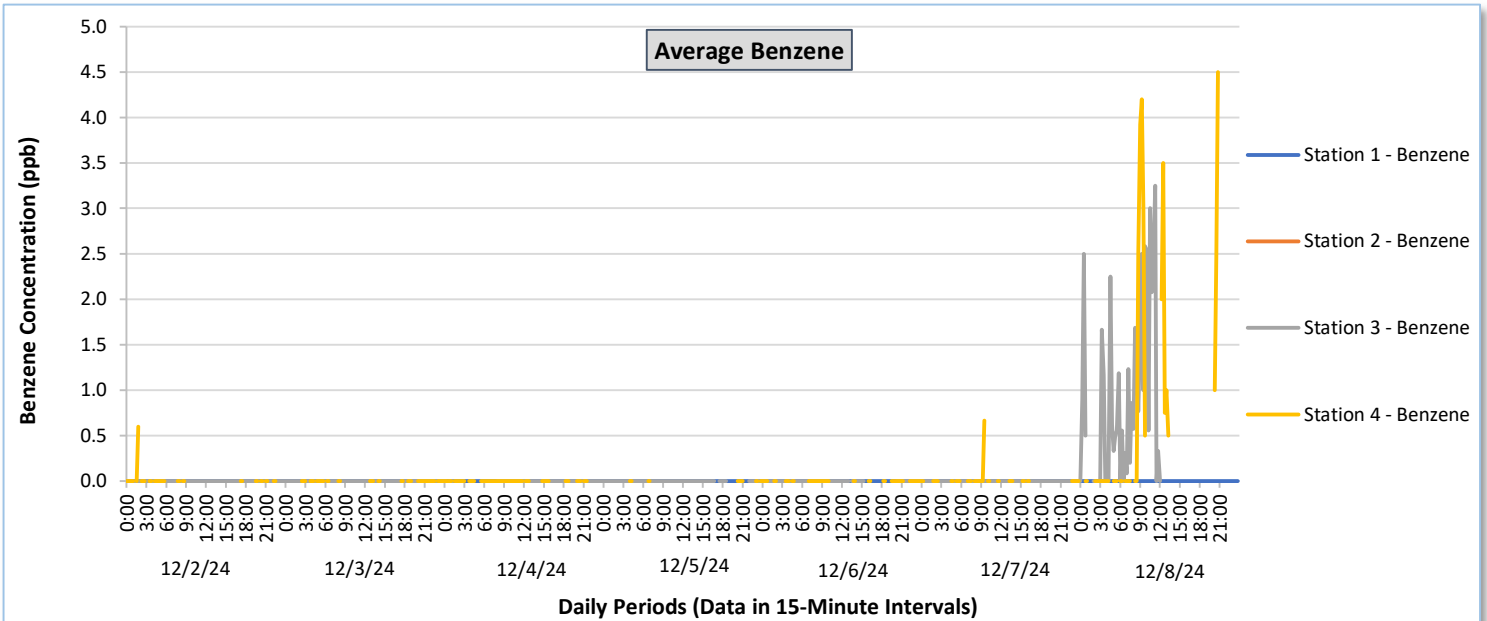
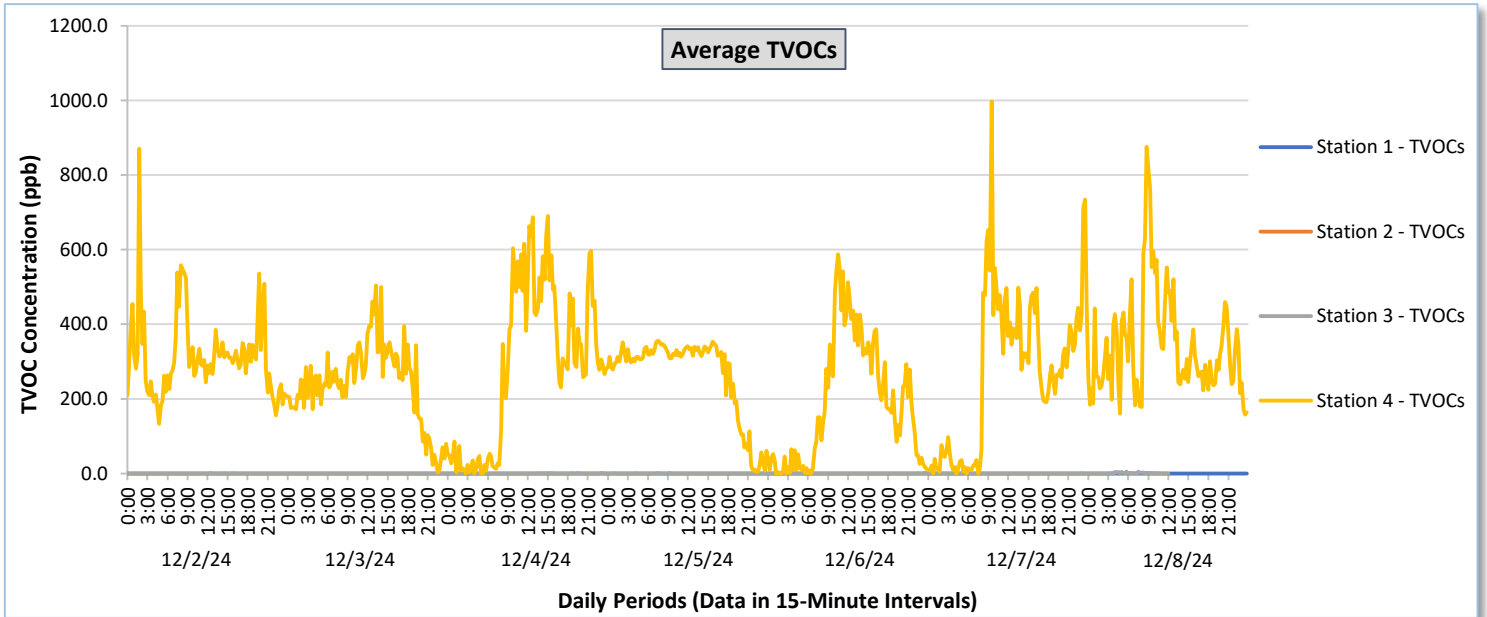




# Perimeter Air Monitoring Weekly Report

Real-Time Multigas Monitoring  
Bristol Landfill Air Investigation

December 2 - December 8, 2024

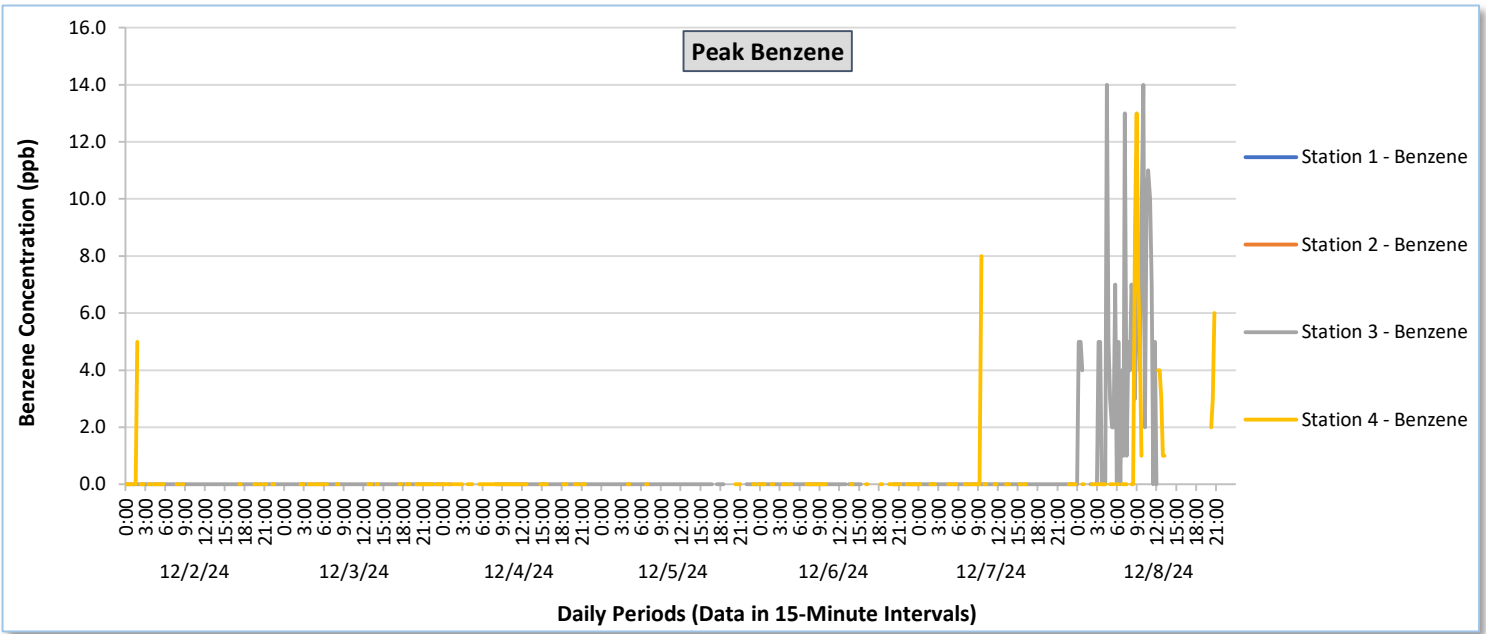
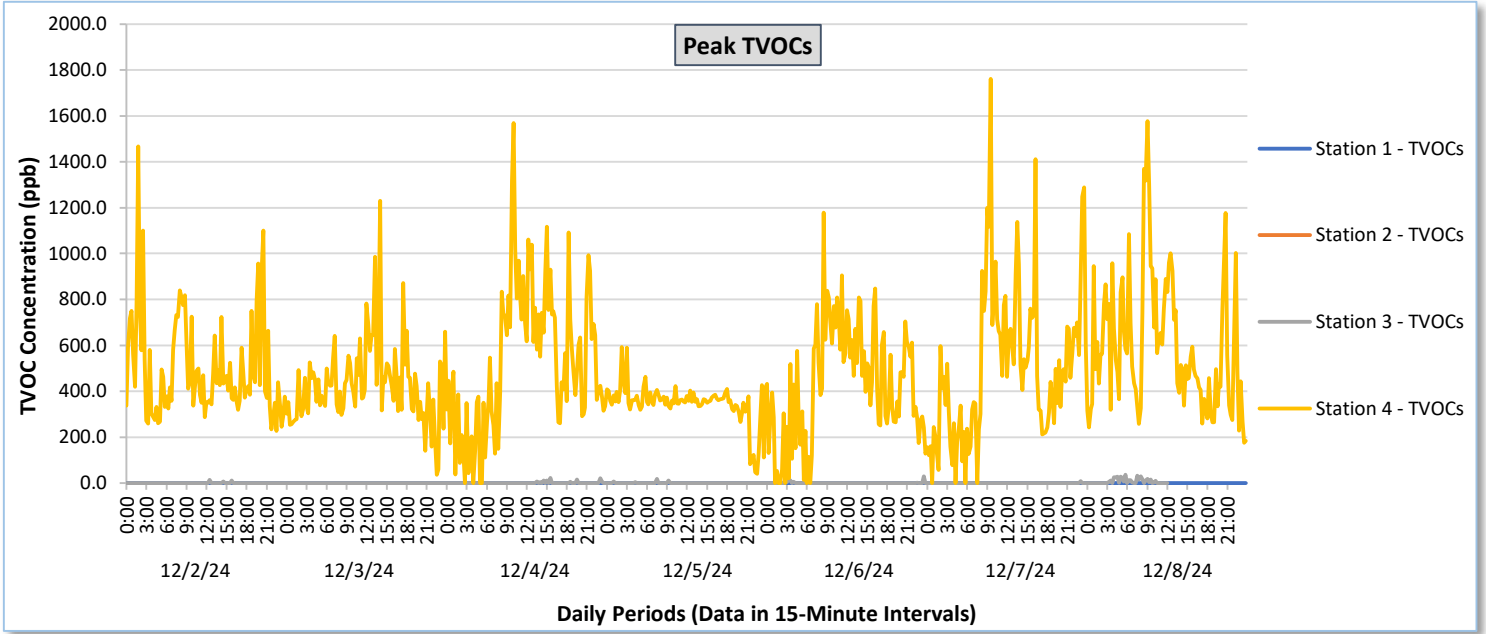




# Perimeter Air Monitoring Weekly Report

Real-Time Multigas Monitoring  
Bristol Landfill Air Investigation

December 2 - December 8, 2024

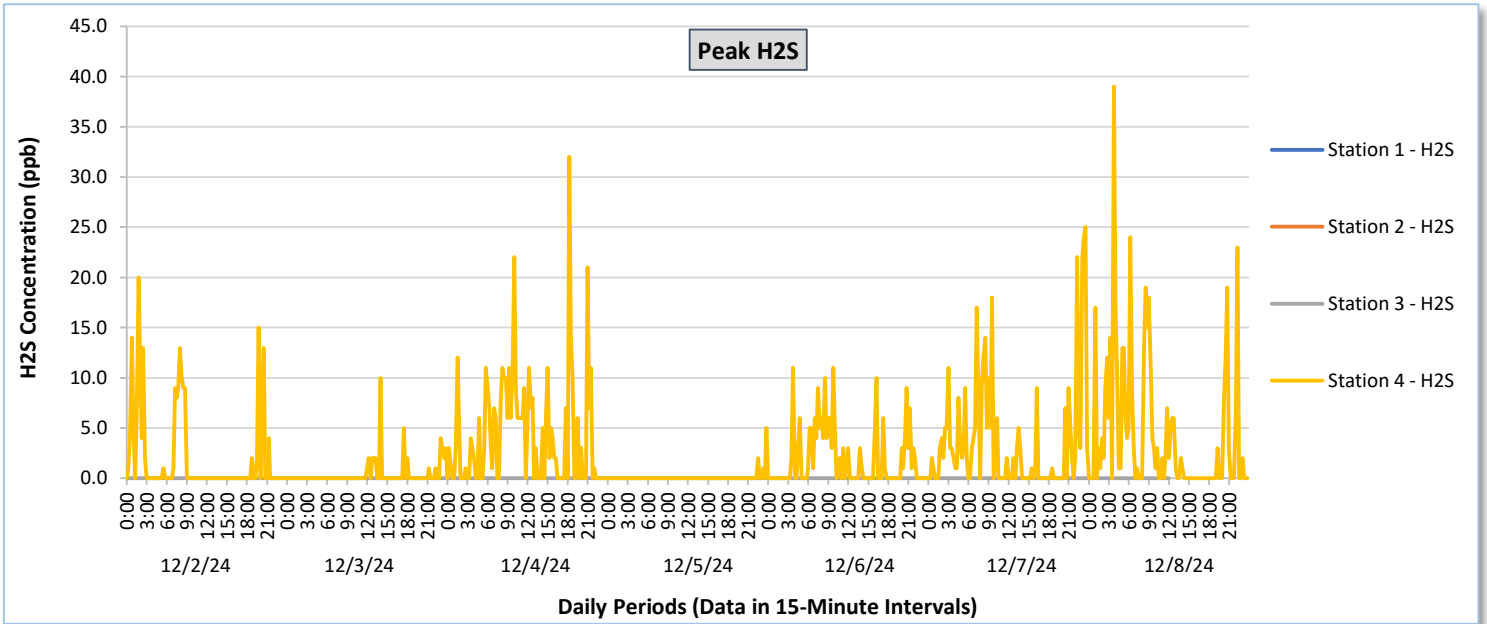
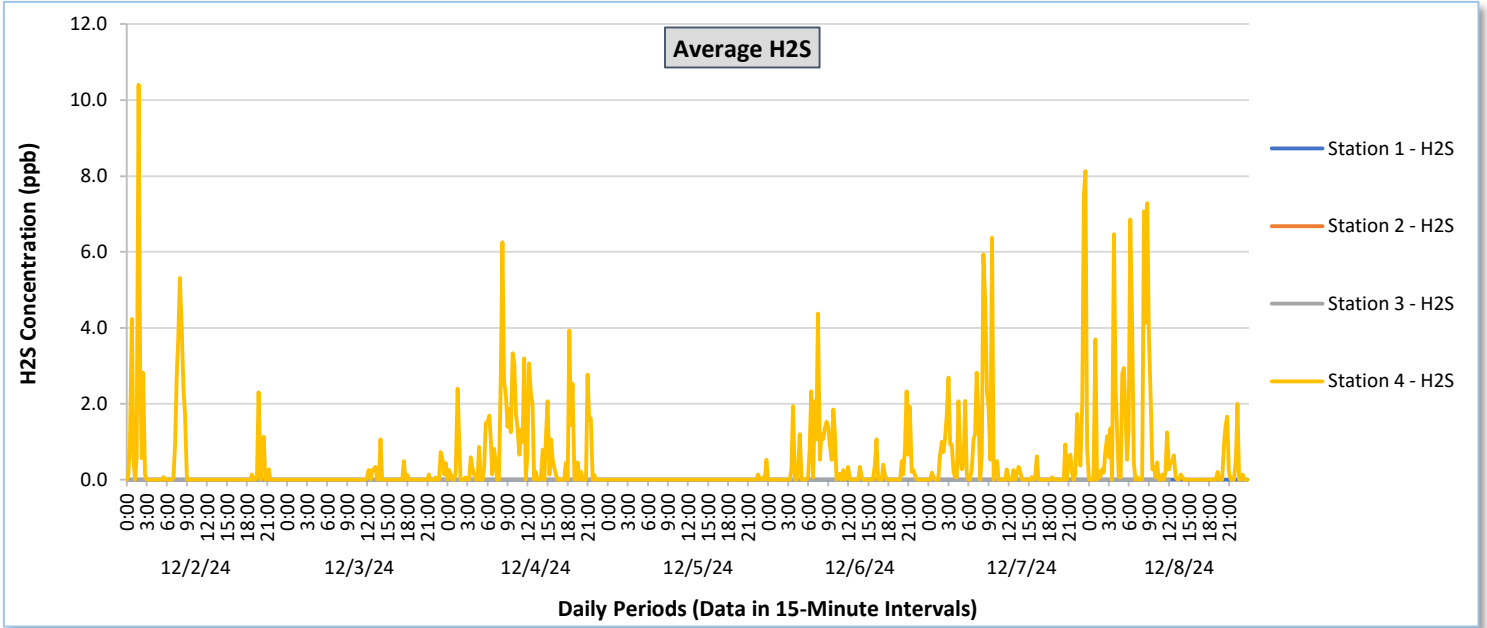




# Perimeter Air Monitoring Weekly Report

Real-Time Multigas Monitoring  
Bristol Landfill Air Investigation

December 2 - December 8, 2024





# Perimeter Air Monitoring Weekly Report

Real-Time Multigas Monitoring  
Bristol Landfill Air Investigation  
December 2 - December 8, 2024

Date	Daily Statistics	Station 1						Station 2						Station 3						Station 4						
		TVOCs		H2S		Benzene		TVOCs		H2S		Benzene		TVOCs		H2S		Benzene		TVOCs		H2S		Benzene		
		Average ppb	Peak ppb	Average ppb	Peak ppb	Average ppb	Peak ppb	Average ppb	Peak ppb	Average ppb	Peak ppb	Average ppb	Peak ppb	Average ppb	Peak ppb	Average ppb	Peak ppb	Average ppb	Peak ppb	Average ppb	Peak ppb	Average ppb	Peak ppb	Average ppb	Peak ppb	
		Values from 15-minute intervals.	1-minute max within each 15 minute interval.	Values from 15-minute intervals.	1-minute max within each 15 minute interval.	Values from 15-minute intervals.	1-minute max within each 15 minute interval.	Values from 15-minute intervals.	1-minute max within each 15 minute interval.	Values from 15-minute intervals.	1-minute max within each 15 minute interval.	Values from 15-minute intervals.	1-minute max within each 15 minute interval.	Values from 15-minute intervals.	1-minute max within each 15 minute interval.	Values from 15-minute intervals.	1-minute max within each 15 minute interval.	Values from 15-minute intervals.	1-minute max within each 15 minute interval.	Values from 15-minute intervals.	1-minute max within each 15 minute interval.	Values from 15-minute intervals.	1-minute max within each 15 minute interval.	Values from 15-minute intervals.	1-minute max within each 15 minute interval.	
December 2, 2024	Minimum	0.0	0.0	0.0	0.0	-	-	-	-	-	-	-	-	-	-	-	-	-	-	-	-	-	-	-	-	
	Maximum	0.0	0.0	0.0	0.0	-	-	-	-	-	-	-	-	-	0.9	14.0	0.0	0.0	-	-	870.9	1,467.0	10.4	20.0	0.6	5.0
	Average	0.0	0.0	0.0	0.0	-	-	-	-	-	-	-	-	-	0.0	0.3	0.0	0.0	-	-	312.8	497.5	0.5	2.0	0.0	0.1
December 3, 2024	Minimum	0.0	0.0	0.0	0.0	-	-	-	-	-	-	-	-	-	0.0	0.0	0.0	0.0	-	-	2.4	36.0	0.0	0.0	0.0	0.0
	Maximum	0.0	0.0	0.0	0.0	-	-	-	-	-	-	-	-	-	0.0	0.0	0.0	0.0	-	-	504.1	1,230.0	1.1	10.0	0.0	0.0
	Average	0.0	0.0	0.0	0.0	-	-	-	-	-	-	-	-	-	0.0	0.0	0.0	0.0	-	-	239.8	428.1	0.1	0.4	0.0	0.0
December 4, 2024	Minimum	0.0	0.0	0.0	0.0	-	-	-	-	-	-	-	-	-	0.0	0.0	0.0	0.0	-	-	0.0	0.0	0.0	0.0	0.0	0.0
	Maximum	0.0	0.0	0.0	0.0	-	-	-	-	-	-	-	-	-	1.5	22.0	0.0	0.0	-	-	690.6	1,569.0	6.3	32.0	0.0	0.0
	Average	0.0	0.0	0.0	0.0	-	-	-	-	-	-	-	-	-	0.1	1.1	0.0	0.0	-	-	288.8	530.0	0.8	4.2	0.0	0.0
December 5, 2024	Minimum	0.0	0.0	0.0	0.0	-	-	-	-	-	-	-	-	-	0.0	0.0	0.0	0.0	-	-	4.0	40.0	0.0	0.0	0.0	0.0
	Maximum	0.0	0.0	0.0	0.0	-	-	-	-	-	-	-	-	-	1.1	17.0	0.0	0.0	-	-	356.3	592.0	0.5	5.0	0.0	0.0
	Average	0.0	0.0	0.0	0.0	-	-	-	-	-	-	-	-	-	0.0	0.4	0.0	0.0	-	-	266.0	347.4	0.0	0.1	0.0	0.0
December 6, 2024	Minimum	0.0	0.0	0.0	0.0	-	-	-	-	-	-	-	-	-	0.0	0.0	0.0	0.0	-	-	0.0	0.0	0.0	0.0	0.0	0.0
	Maximum	0.0	0.0	0.0	0.0	-	-	-	-	-	-	-	-	-	1.9	28.0	0.0	0.0	-	-	586.8	1,179.0	4.4	11.0	0.0	0.0
	Average	0.0	0.0	0.0	0.0	-	-	-	-	-	-	-	-	-	0.1	1.1	0.0	0.0	-	-	189.8	429.7	0.4	1.9	0.0	0.0
December 7, 2024	Minimum	0.0	0.0	0.0	0.0	-	-	-	-	-	-	-	-	-	0.0	0.0	0.0	0.0	-	-	0.0	0.0	0.0	0.0	0.0	0.0
	Maximum	0.0	0.0	0.0	0.0	-	-	-	-	-	-	-	-	-	0.5	8.0	0.0	0.0	-	-	997.7	1,761.0	8.1	25.0	0.7	8.0
	Average	0.0	0.0	0.0	0.0	-	-	-	-	-	-	-	-	-	0.0	0.1	0.0	0.0	-	-	268.9	506.1	0.7	3.6	0.0	0.2
December 8, 2024	Minimum	0.0	0.0	0.0	0.0	-	-	-	-	-	-	-	-	-	0.0	0.0	0.0	0.0	-	-	157.1	175.0	0.0	0.0	0.0	0.0
	Maximum	0.0	0.0	0.0	0.0	-	-	-	-	-	-	-	-	-	4.7	36.0	0.0	0.0	-	-	875.6	1,578.0	7.3	39.0	4.5	13.0
	Average	0.0	0.0	0.0	0.0	-	-	-	-	-	-	-	-	-	0.6	6.0	0.0	0.0	-	-	340.8	592.5	0.8	4.3	0.9	1.8

**Notes:**

- Data records with a dash indicate no data is available for that interval.
- Calibration readings and data produced during periods of sensor downtime and/or maintenance are excluded from the report.
- Station 2 shut down 7/30/2024 and is undergoing maintenance.
- The CTair monitoring systems at each station are programmed to initiate benzene sampling when a TVOC reading of  $\geq 160$  ppb is measured. It has been observed that there are occurrences of TVOC readings  $\geq 160$  ppb where the benzene sampling was not initiated. The affected stations and periods are detailed in the monitoring systems daily reports. The equipment supplier has been notified of this issue and a corrective action will be implemented when provided.
- As discussed with the manufacturer of the H2S sensor, there is high likelihood that the H2S sensor has cross sensitivity with other sulfur compounds, including, but are not limited to, carbonyl sulfide, dimethyl sulfide, dimethyl disulfide, and methyl mercaptan. The potential for cross sensitivity with other reduced sulfur compounds must be considered when interpreting H2S levels recorded by the sensors.
- Station 3 experienced outages sporadically on 12/5/24 and 12/6/24.



## Perimeter Air Monitoring Weekly Report

Real-Time Multigas Monitoring  
Bristol Landfill Air Investigation

December 2 - December 8, 2024

Date	Daily Statistics	Bristol Met Station				
		Wind Direction degrees	Wind Speed mph	Temperature °F	Relative Humidity %	Barometric Pressure mbar
December 2, 2024	Minimum		0.0	-	48.5	954.9
	Maximum		-	-	86.4	958.5
	Average	263.5	-	-	68.3	956.6
December 3, 2024	Minimum		0.0	18.2	61.3	958.4
	Maximum		8.0	28.0	84.3	963.8
	Average	267.8	2.2	25.0	72.5	961.6
December 4, 2024	Minimum		0.0	14.8	44.5	945.3
	Maximum		17.0	45.3	90.4	960.7
	Average	153.3	2.3	28.0	69.6	953.9
December 5, 2024	Minimum		1.0	22.2	25.5	942.7
	Maximum		28.0	45.0	73.8	958.3
	Average	260.8	7.3	40.1	49.9	949.8
December 6, 2024	Minimum		0.0	14.9	40.9	957.6
	Maximum		7.0	32.0	73.2	961.4
	Average	219.3	1.8	24.8	57.2	959.0
December 7, 2024	Minimum		0.0	15.6	23.0	954.4
	Maximum		12.0	43.8	81.2	960.3
	Average	225.2	1.9	29.8	50.8	957.4
December 8, 2024	Minimum		0.0	29.9	41.4	950.5
	Maximum		15.0	56.6	85.4	954.8
	Average	209.1	2.3	43.7	51.8	952.9

**Notes:**

- Dash/Blank data records indicate no data is available for that interval.
- Wind direction is a daily (24-hr) average value; with the origin of wind in degrees; clockwise from North calculated with vector averaging.