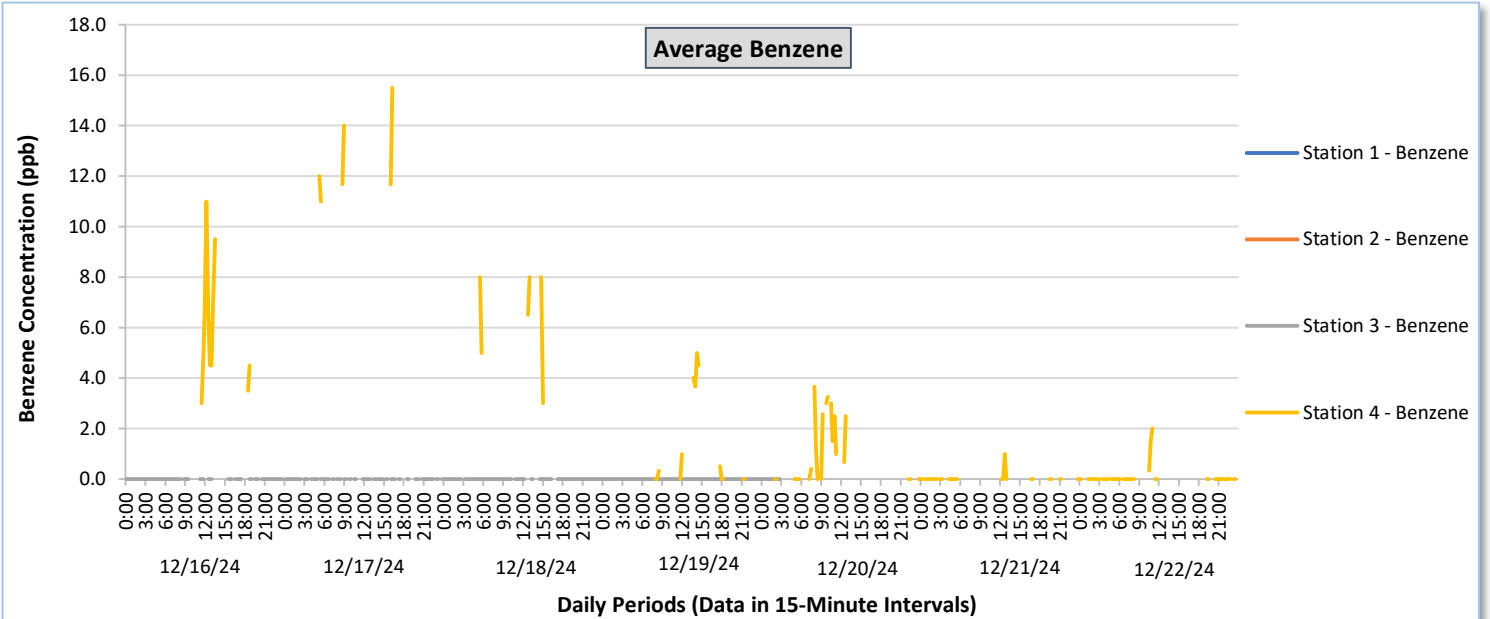
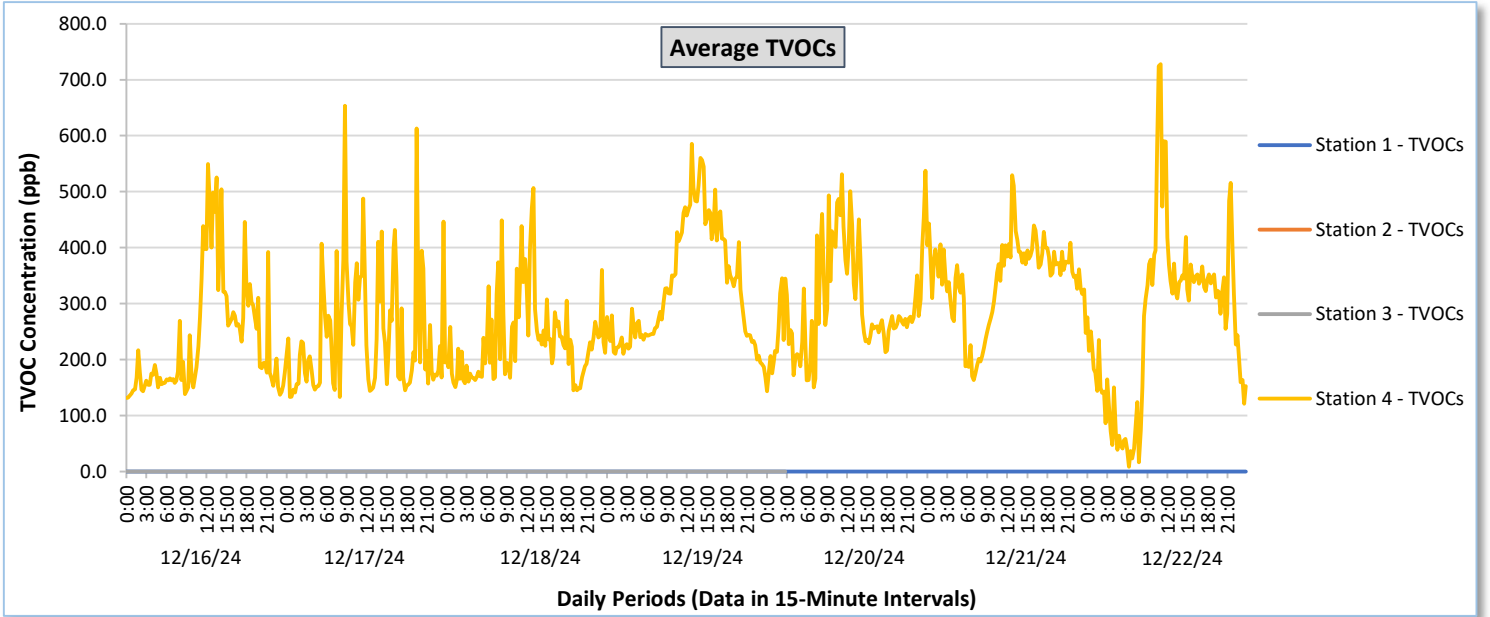




Perimeter Air Monitoring Weekly Report

Real-Time Multigas Monitoring
Bristol Landfill Air Investigation

December 16 - December 22, 2024

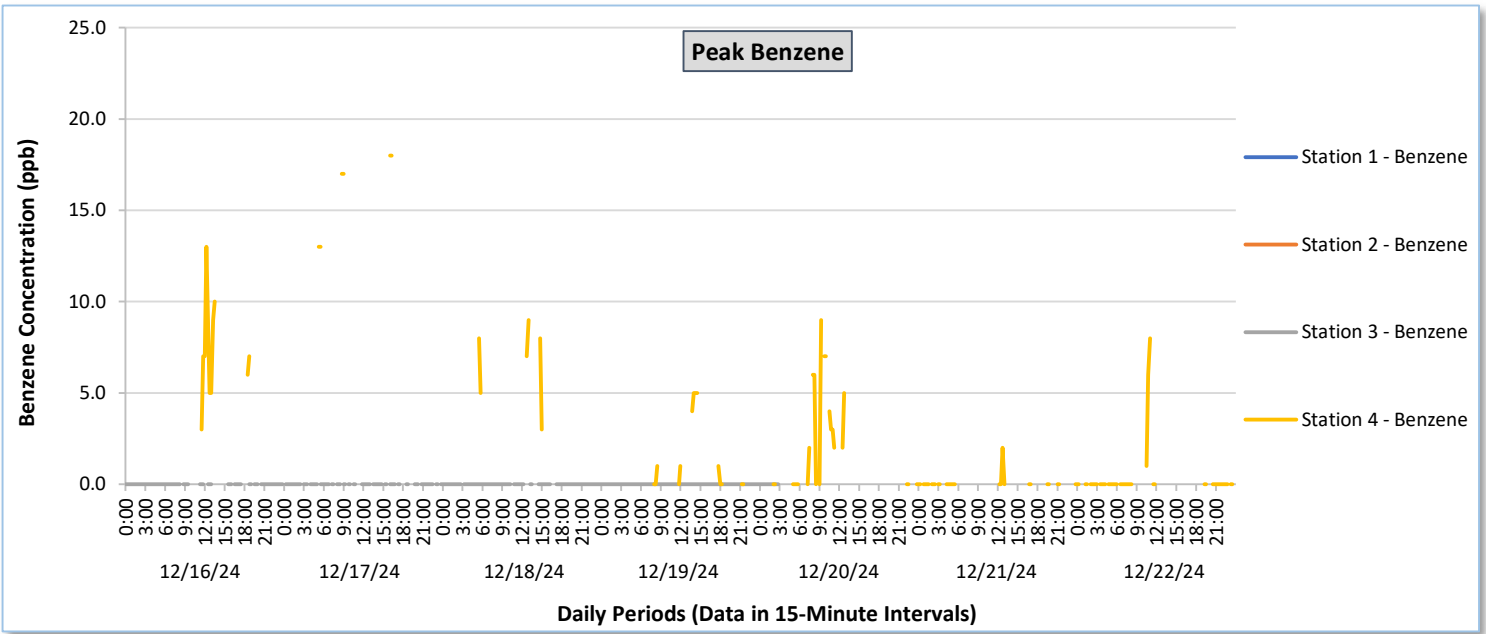
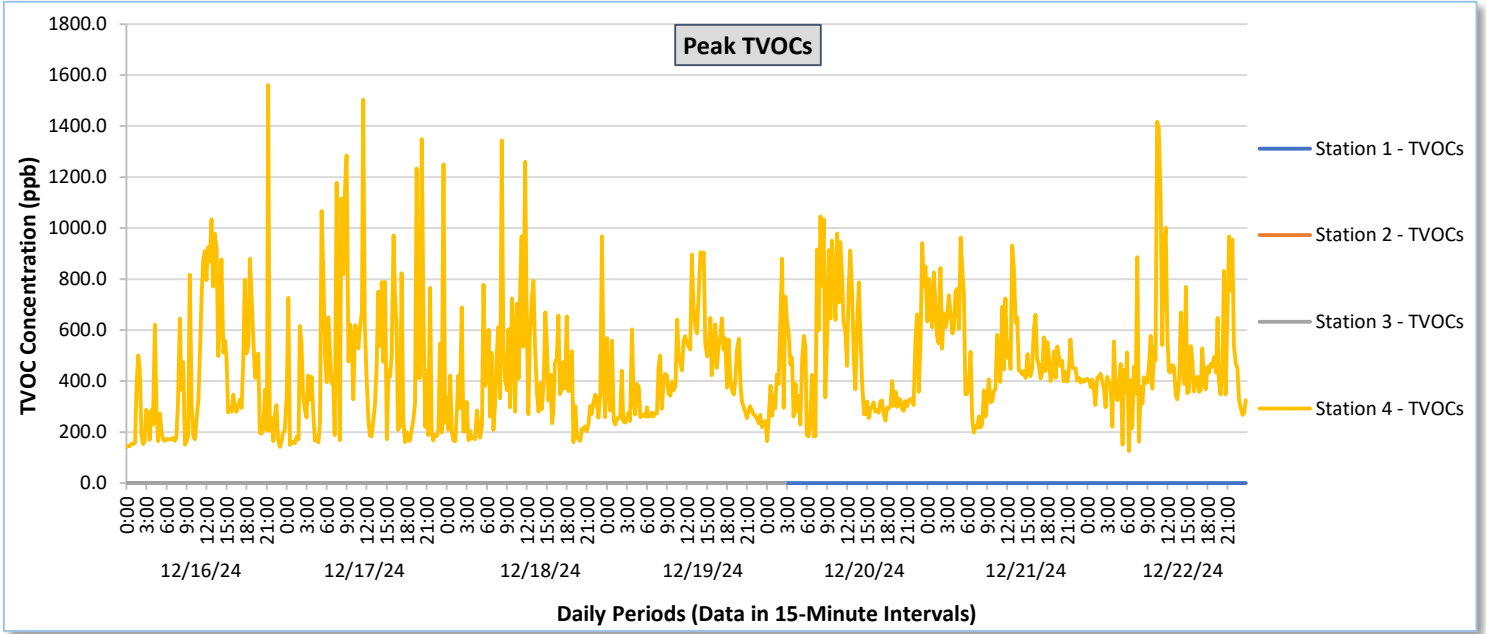




Perimeter Air Monitoring Weekly Report

Real-Time Multigas Monitoring
Bristol Landfill Air Investigation

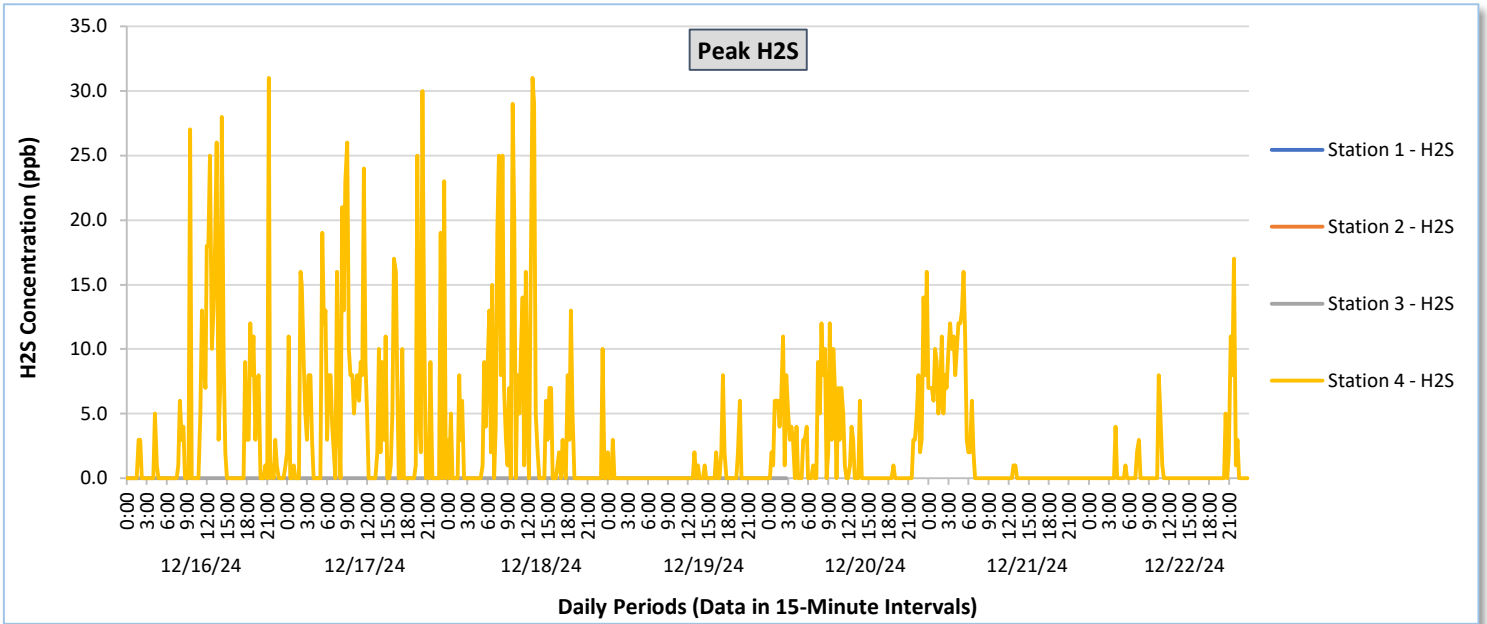
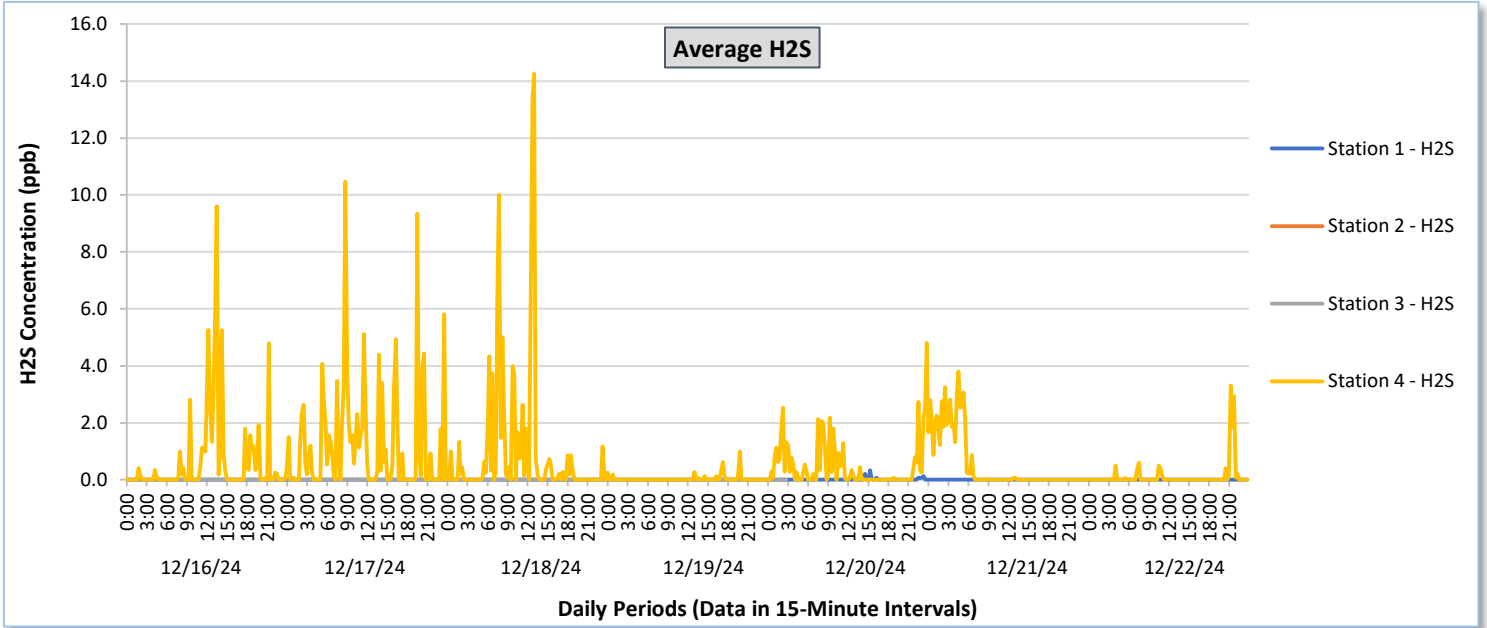
December 16 - December 22, 2024





Perimeter Air Monitoring Weekly Report

Real-Time Multigas Monitoring
Bristol Landfill Air Investigation
December 16 - December 22, 2024





Perimeter Air Monitoring Weekly Report

Real-Time Multigas Monitoring
Bristol Landfill Air Investigation
December 16 - December 22, 2024

Date	Daily Statistics	Station 1						Station 2						Station 3						Station 4						
		TVOCs		H2S		Benzene		TVOCs		H2S		Benzene		TVOCs		H2S		Benzene		TVOCs		H2S		Benzene		
		Average ppb	Peak ppb	Average ppb	Peak ppb	Average ppb	Peak ppb	Average ppb	Peak ppb	Average ppb	Peak ppb	Average ppb	Peak ppb	Average ppb	Peak ppb	Average ppb	Peak ppb	Average ppb	Peak ppb	Average ppb	Peak ppb	Average ppb	Peak ppb	Average ppb	Peak ppb	
		Values from 15-minute intervals.	1-minute max within each 15 minute interval.	Values from 15-minute intervals.	1-minute max within each 15 minute interval.	Values from 15-minute intervals.	1-minute max within each 15 minute interval.	Values from 15-minute intervals.	1-minute max within each 15 minute interval.	Values from 15-minute intervals.	1-minute max within each 15 minute interval.	Values from 15-minute intervals.	1-minute max within each 15 minute interval.	Values from 15-minute intervals.	1-minute max within each 15 minute interval.	Values from 15-minute intervals.	1-minute max within each 15 minute interval.	Values from 15-minute intervals.	1-minute max within each 15 minute interval.	Values from 15-minute intervals.	1-minute max within each 15 minute interval.	Values from 15-minute intervals.	1-minute max within each 15 minute interval.	Values from 15-minute intervals.	1-minute max within each 15 minute interval.	
December 16, 2024	Minimum	0.0	0.0	0.0	0.0	-	-	-	-	-	-	-	-	-	-	-	-	-	-	-	-	-	-	-	-	
	Maximum	0.0	0.0	0.0	0.0	-	-	-	-	-	-	-	-	-	-	-	-	-	-	-	131.6	141.0	0.0	0.0	0.0	0.0
	Average	0.0	0.0	0.0	0.0	-	-	-	-	-	-	-	-	-	-	-	-	-	-	-	237.0	392.3	0.6	3.8	5.5	6.7
December 17, 2024	Minimum	0.0	0.0	0.0	0.0	-	-	-	-	-	-	-	-	-	-	-	-	-	-	-	-	-	-	-	-	
	Maximum	0.0	0.0	0.0	0.0	-	-	-	-	-	-	-	-	-	-	-	-	-	-	-	653.3	1,503.0	10.5	30.0	16.0	22.0
	Average	0.0	0.0	0.0	0.0	-	-	-	-	-	-	-	-	-	-	-	-	-	-	-	245.7	476.7	1.3	6.1	11.5	14.3
December 18, 2024	Minimum	0.0	0.0	0.0	0.0	-	-	-	-	-	-	-	-	-	-	-	-	-	-	-	-	-	-	-	-	
	Maximum	0.0	0.0	0.0	0.0	-	-	-	-	-	-	-	-	-	-	-	-	-	-	-	506.4	1,344.0	14.3	31.0	14.5	21.0
	Average	0.0	0.0	0.0	0.0	-	-	-	-	-	-	-	-	-	-	-	-	-	-	-	236.1	408.1	1.0	4.6	8.0	10.0
December 19, 2024	Minimum	0.0	0.0	0.0	0.0	-	-	-	-	-	-	-	-	-	-	-	-	-	-	-	-	-	-	-	-	
	Maximum	0.0	0.0	0.0	0.0	-	-	-	-	-	-	-	-	-	-	-	-	-	-	-	585.5	904.0	1.0	8.0	5.0	8.0
	Average	0.0	0.0	0.0	0.0	-	-	-	-	-	-	-	-	-	-	-	-	-	-	-	328.5	416.2	0.0	0.3	1.0	1.4
December 20, 2024	Minimum	0.0	0.0	0.0	0.0	-	-	-	-	-	-	-	-	-	-	-	-	-	-	-	-	-	-	-	-	
	Maximum	0.0	0.0	0.3	0.0	-	-	-	-	-	-	-	-	-	-	-	-	-	-	-	537.6	1,046.0	4.8	16.0	3.7	9.0
	Average	0.0	0.0	0.0	0.0	-	-	-	-	-	-	-	-	-	-	-	-	-	-	-	296.2	477.5	0.5	2.7	0.8	1.7
December 21, 2024	Minimum	0.0	0.0	0.0	0.0	-	-	-	-	-	-	-	-	-	-	-	-	-	-	-	-	-	-	-	-	
	Maximum	0.0	0.0	0.0	0.0	-	-	-	-	-	-	-	-	-	-	-	-	-	-	-	529.6	963.0	3.8	16.0	1.0	2.0
	Average	0.0	0.0	0.0	0.0	-	-	-	-	-	-	-	-	-	-	-	-	-	-	-	342.6	506.1	0.6	2.4	0.0	0.1
December 22, 2024	Minimum	0.0	0.0	0.0	0.0	-	-	-	-	-	-	-	-	-	-	-	-	-	-	-	-	-	-	-	-	
	Maximum	0.0	0.0	0.0	0.0	-	-	-	-	-	-	-	-	-	-	-	-	-	-	-	727.8	1,417.0	3.3	17.0	2.0	8.0
	Average	0.0	0.0	0.0	0.0	-	-	-	-	-	-	-	-	-	-	-	-	-	-	-	267.7	474.2	0.1	0.7	0.1	0.3

Notes:

- Data records with a dash indicate no data is available for that interval.
- Calibration readings and data produced during periods of sensor downtime and/or maintenance are excluded from the report.
- Station 2 shut down 7/30/2024 and is undergoing maintenance.
- The CTair monitoring systems at each station are programmed to initiate benzene sampling when a TVOC reading of ≥ 160 ppb is measured. It has been observed that there are occurrences of TVOC readings ≥ 160 ppb where the benzene sampling was not initiated. The affected stations and periods are detailed in the monitoring systems daily reports. The equipment supplier has been notified of this issue and a corrective action will be implemented when provided.
- As discussed with the manufacturer of the H2S sensor, there is high likelihood that the H2S sensor has cross sensitivity with other sulfur compounds, including, but are not limited to, carbonyl sulfide, dimethyl sulfide, dimethyl disulfide, and methyl mercaptan. The potential for cross sensitivity with other reduced sulfur compounds must be considered when interpreting H2S levels recorded by the sensors.
- Station 3 went offline 12/20/2024 and remained offline through the end of this report period.



Perimeter Air Monitoring Weekly Report

Real-Time Multigas Monitoring
Bristol Landfill Air Investigation

December 16 - December 22, 2024

Date	Daily Statistics	Bristol Met Station				
		Wind Direction degrees	Wind Speed mph	Temperature °F	Relative Humidity %	Barometric Pressure mbar
December 16, 2024	Minimum		0.0	43.7	80.8	954.9
	Maximum		8.0	59.1	96.7	960.0
	Average	158.7	2.3	49.8	92.2	957.7
December 17, 2024	Minimum		0.0	51.5	95.7	956.0
	Maximum		7.0	56.5	97.7	958.6
	Average	206.7	1.5	54.1	97.2	957.4
December 18, 2024	Minimum		0.0	40.9	86.7	951.4
	Maximum		16.0	55.1	98.3	958.2
	Average	209.0	2.4	49.6	96.1	954.3
December 19, 2024	Minimum		0.0	34.3	76.9	951.5
	Maximum		8.0	42.2	94.1	958.3
	Average	216.7	2.5	38.8	85.4	955.2
December 20, 2024	Minimum		0.0	34.3	93.8	945.7
	Maximum		5.0	36.9	95.4	953.5
	Average	187.2	1.5	35.7	94.5	949.8
December 21, 2024	Minimum		-	-	-	952.9
	Maximum		-	-	-	959.4
	Average	-	-	-	-	956.7
December 22, 2024	Minimum		-	-	-	958.6
	Maximum		-	-	-	962.4
	Average	-	-	-	-	960.6

Notes:

- Dash/Blank data records indicate no data is available for that interval.
- Wind direction is a daily (24-hr) average value; with the origin of wind in degrees; clockwise from North calculated with vector averaging.
- The Met Station went offline 12/20/2024 and remained offline through the end of this report period.