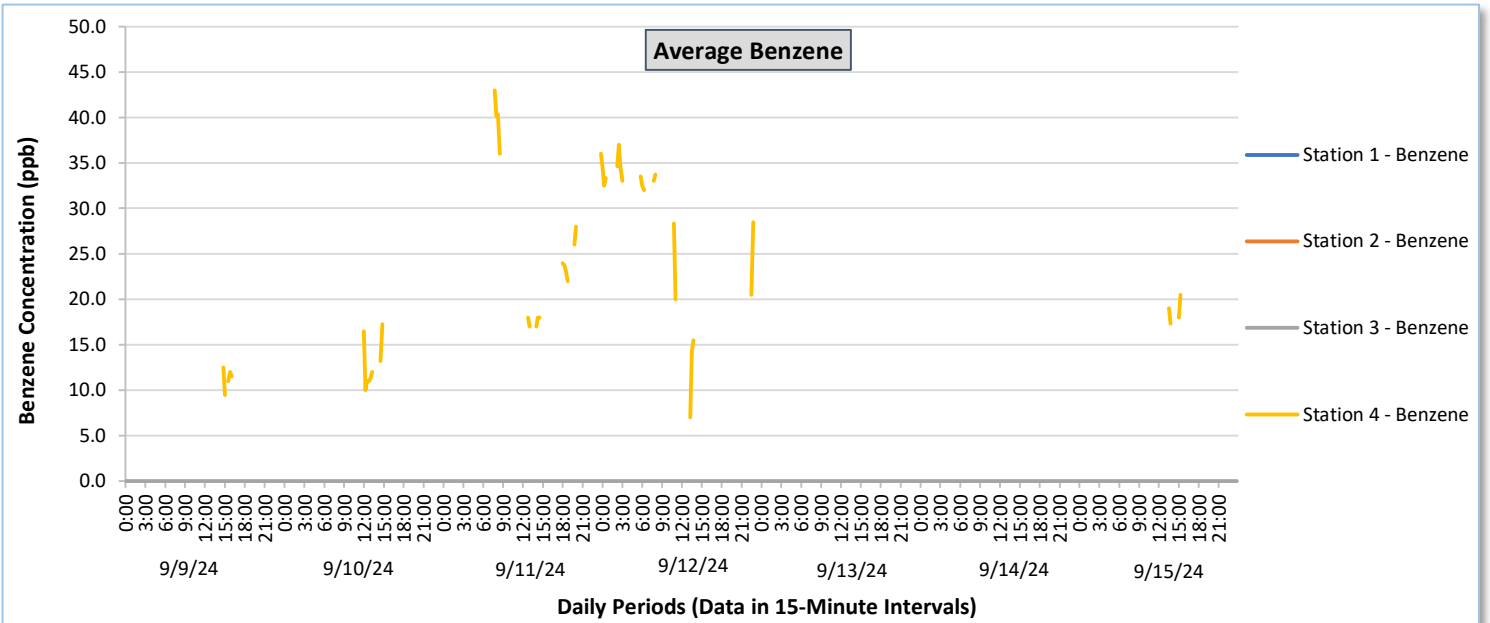
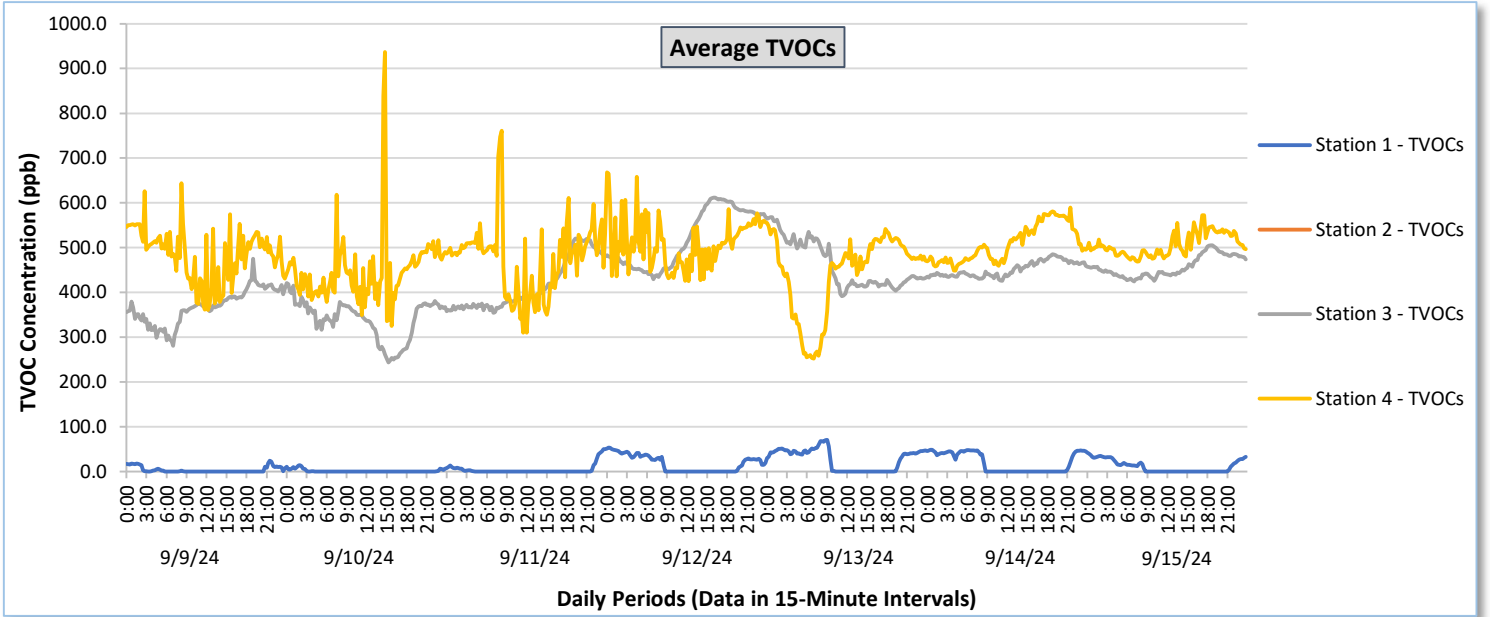




Perimeter Air Monitoring Weekly Report

Real-Time Multigas Monitoring
Bristol Landfill Air Investigation

September 9 - September 15, 2024

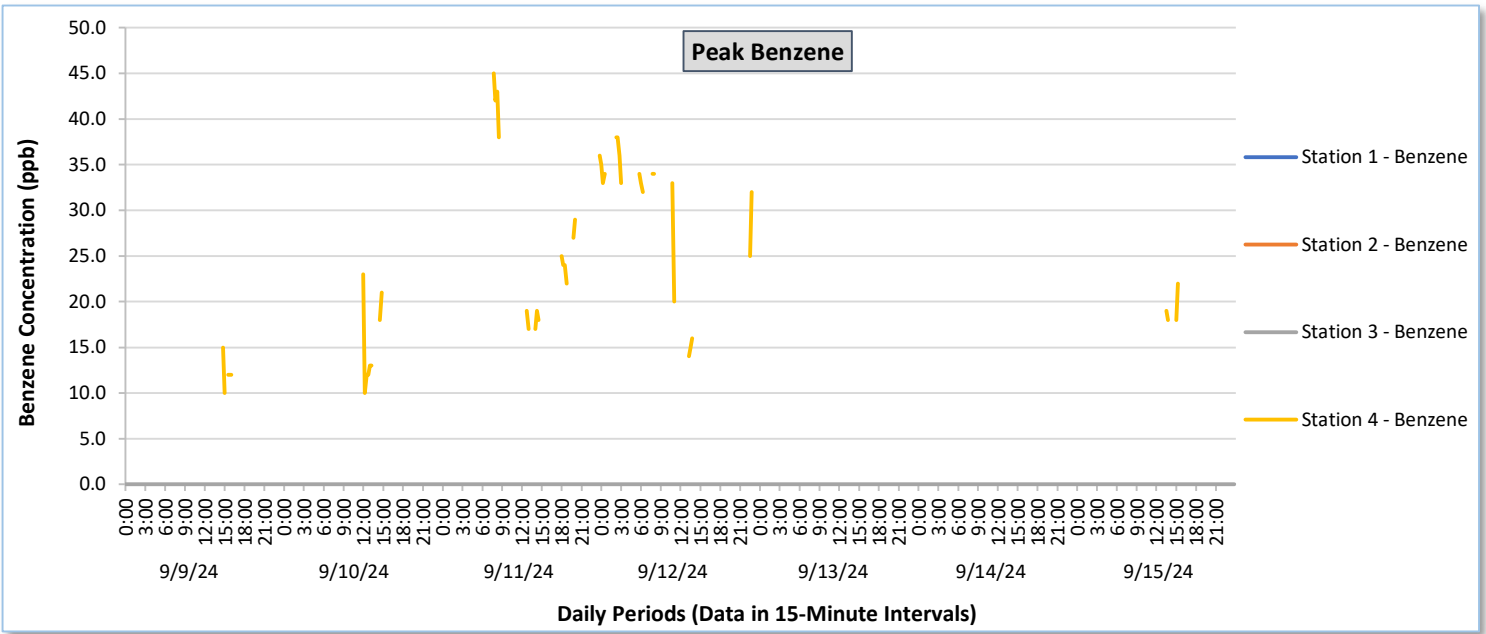
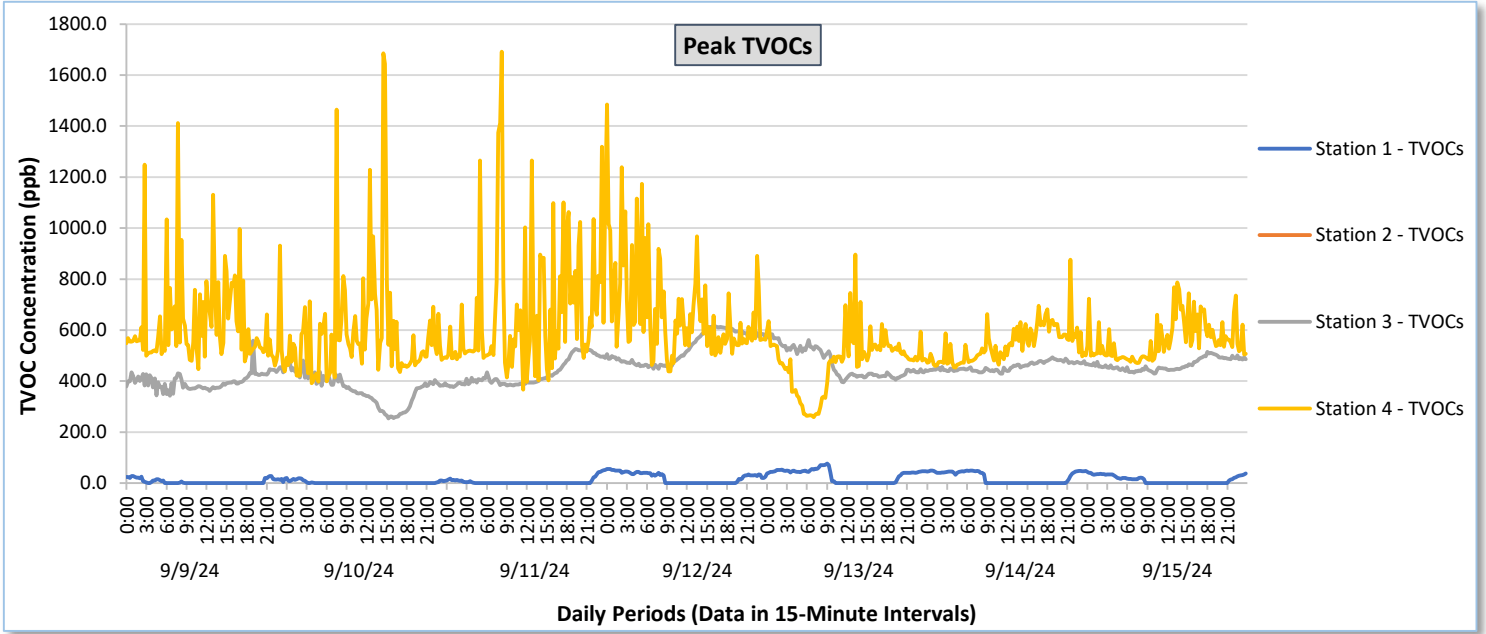




Perimeter Air Monitoring Weekly Report

Real-Time Multigas Monitoring
Bristol Landfill Air Investigation

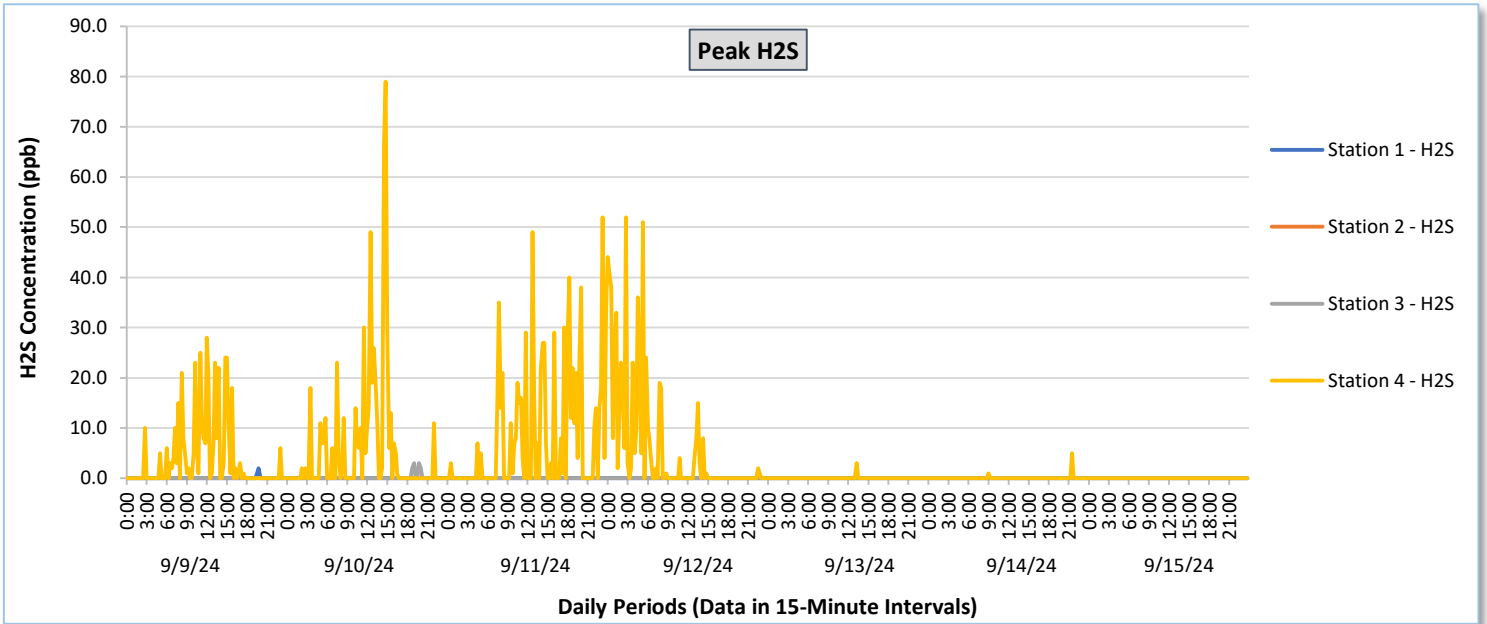
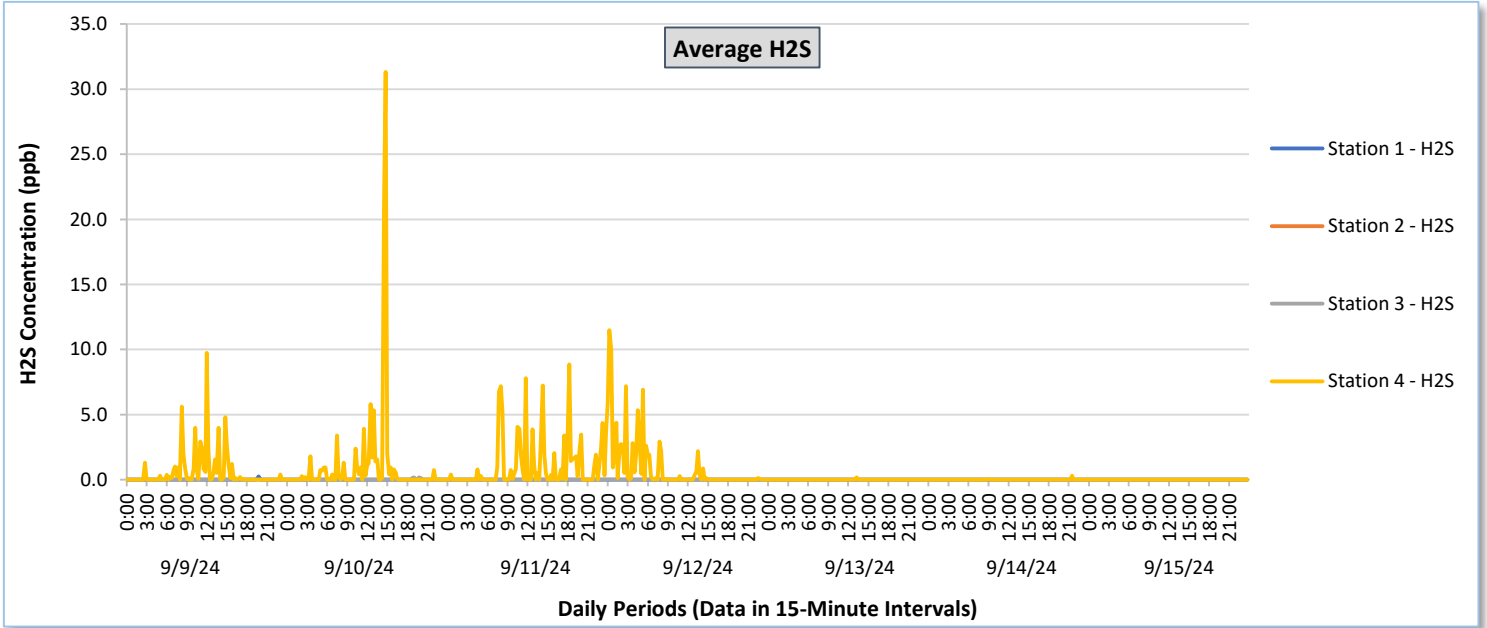
September 9 - September 15, 2024





Perimeter Air Monitoring Weekly Report

Real-Time Multigas Monitoring
Bristol Landfill Air Investigation
September 9 - September 15, 2024





Perimeter Air Monitoring Weekly Report

Real-Time Multigas Monitoring
Bristol Landfill Air Investigation
September 9 - September 15, 2024

Date	Daily Statistics	Station 1						Station 2						Station 3						Station 4					
		TVOCs		H2S		Benzene		TVOCs		H2S		Benzene		TVOCs		H2S		Benzene		TVOCs		H2S		Benzene	
		Average ppb	Peak ppb	Average ppb	Peak ppb	Average ppb	Peak ppb	Average ppb	Peak ppb	Average ppb	Peak ppb	Average ppb	Peak ppb	Average ppb	Peak ppb	Average ppb	Peak ppb	Average ppb	Peak ppb	Average ppb	Peak ppb	Average ppb	Peak ppb	Average ppb	Peak ppb
September 9, 2024	Minimum	0.0	0.0	0.0	0.0	-	-	-	-	-	-	-	-	280.7	343.0	0.0	0.0	0.0	0.0	361.3	438.0	0.0	0.0	9.5	10.0
	Maximum	24.6	27.0	0.3	2.0	-	-	-	-	-	-	-	-	475.0	559.0	0.0	0.0	0.0	0.0	644.4	1,412.0	9.8	28.0	40.0	42.0
	Average	3.7	5.7	0.0	0.0	-	-	-	-	-	-	-	-	368.5	400.8	0.0	0.0	0.0	0.0	485.1	622.2	0.6	4.0	22.2	24.8
September 10, 2024	Minimum	0.0	0.0	0.0	0.0	-	-	-	-	-	-	-	-	243.9	254.0	0.0	0.0	0.0	0.0	324.8	391.0	0.0	0.0	10.0	10.0
	Maximum	14.3	20.0	0.0	0.0	-	-	-	-	-	-	-	-	420.5	481.0	0.2	3.0	0.0	0.0	936.6	1,686.0	31.3	79.0	28.5	34.0
	Average	1.3	2.2	0.0	0.0	-	-	-	-	-	-	-	-	339.3	366.6	0.0	0.1	0.0	0.0	448.0	588.0	1.0	5.7	15.2	18.1
September 11, 2024	Minimum	0.0	0.0	0.0	0.0	-	-	-	-	-	-	-	-	354.1	376.0	0.0	0.0	0.0	0.0	310.3	366.0	0.0	0.0	16.0	17.0
	Maximum	50.1	52.0	0.0	0.0	-	-	-	-	-	-	-	-	520.5	525.0	0.0	0.0	0.0	0.0	760.8	1,692.0	8.9	52.0	43.0	45.0
	Average	4.0	4.8	0.0	0.0	-	-	-	-	-	-	-	-	414.9	428.7	0.0	0.0	0.0	0.0	474.7	672.9	1.1	8.2	26.9	29.0
September 12, 2024	Minimum	0.0	0.0	0.0	0.0	-	-	-	-	-	-	-	-	428.9	448.0	0.0	0.0	0.0	0.0	424.9	438.0	0.0	0.0	7.0	14.0
	Maximum	53.7	55.0	0.0	0.0	-	-	-	-	-	-	-	-	611.7	615.0	0.0	0.0	0.0	0.0	668.1	1,484.0	11.5	52.0	37.0	38.0
	Average	17.8	19.7	0.0	0.0	-	-	-	-	-	-	-	-	521.8	530.4	0.0	0.0	0.0	0.0	510.5	672.7	0.9	6.2	28.3	29.5
September 13, 2024	Minimum	0.0	0.0	0.0	0.0	-	-	-	-	-	-	-	-	391.9	395.0	0.0	0.0	0.0	0.0	252.0	258.0	0.0	0.0	21.5	26.0
	Maximum	70.2	76.0	0.0	0.0	-	-	-	-	-	-	-	-	567.7	584.0	0.0	0.0	0.0	0.0	554.9	895.0	0.2	3.0	29.0	32.0
	Average	26.5	28.6	0.0	0.0	-	-	-	-	-	-	-	-	461.1	470.0	0.0	0.0	0.0	0.0	442.7	475.6	0.0	0.0	25.3	29.0
September 14, 2024	Minimum	0.0	0.0	0.0	0.0	-	-	-	-	-	-	-	-	425.6	429.0	0.0	0.0	0.0	0.0	449.1	453.0	0.0	0.0	21.5	26.0
	Maximum	48.7	49.0	0.0	0.0	-	-	-	-	-	-	-	-	484.8	493.0	0.0	0.0	0.0	0.0	589.5	876.0	0.3	5.0	21.5	26.0
	Average	19.9	21.0	0.0	0.0	-	-	-	-	-	-	-	-	451.6	457.1	0.0	0.0	0.0	0.0	508.5	542.9	0.0	0.1	21.5	26.0
September 15, 2024	Minimum	0.0	0.0	0.0	0.0	-	-	-	-	-	-	-	-	424.1	429.0	0.0	0.0	0.0	0.0	468.6	471.0	0.0	0.0	9.5	18.0
	Maximum	42.4	44.0	0.0	0.0	-	-	-	-	-	-	-	-	505.6	514.0	0.0	0.0	0.0	0.0	572.8	788.0	0.0	0.0	31.0	36.0
	Average	11.3	12.2	0.0	0.0	-	-	-	-	-	-	-	-	457.3	464.4	0.0	0.0	0.0	0.0	506.3	561.6	0.0	0.0	19.8	22.3

Notes:

- Data records with a dash indicate no data is available for that interval.
- Calibration readings and data produced during periods of sensor downtime and/or maintenance are excluded from the report.
- Station 2 shut down on 7/30/2024 due to technical problems and is scheduled for maintenance.
- The CTair monitoring systems at each station are programmed to initiate benzene sampling when a TVOC reading of ≥ 160 ppb is measured. It has been observed that there are occurrences of TVOC readings ≥ 160 ppb where the benzene sampling was not initiated. The affected stations and periods are detailed in the monitoring systems daily reports. The equipment supplier has been notified of this issue and a corrective action will be implemented when provided.
- As discussed with the manufacturer of the H₂S sensor, there is high likelihood that the H₂S sensor has cross sensitivity with other sulfur compounds, including, but are not limited to, carbonyl sulfide, dimethyl sulfide, dimethyl disulfide, and methyl mercaptan. The potential for cross sensitivity with other reduced sulfur compounds must be considered when interpreting H₂S levels recorded by the sensors.



Perimeter Air Monitoring Weekly Report

Real-Time Multigas Monitoring
Bristol Landfill Air Investigation

September 9 - September 15, 2024

Date	Daily Statistics	Bristol Met Station				
		Wind Dir degrees	Wind Speed mph	Temp °F	Rel Humidity %	Baro mbar
September 9, 2024	Minimum		0.0	47.9	31.6	953.9
	Maximum		7.0	77.4	81.5	956.6
	Average	147.2	1.3	61.4	61.5	955.1
September 10, 2024	Minimum		0.0	49.6	13.7	952.4
	Maximum		6.0	82.8	89.9	955.9
	Average	118.3	1.5	64.7	56.8	954.5
September 11, 2024	Minimum		0.0	55.5	33.9	951.5
	Maximum		12.0	82.3	75.4	955.1
	Average	95.9	2.4	68.5	56.6	953.6
September 12, 2024	Minimum		0.0	59.2	50.4	952.1
	Maximum		17.0	73.9	75.4	954.5
	Average	79.2	4.2	66.9	64.9	953.3
September 13, 2024	Minimum		0.0	62.2	55.0	952.4
	Maximum		16.0	79.7	91.4	954.0
	Average	76.5	5.0	70.1	73.1	953.1
September 14, 2024	Minimum		0.0	66.6	49.3	952.6
	Maximum		17.0	78.6	80.8	954.9
	Average	75.0	5.4	71.4	67.0	953.7
September 15, 2024	Minimum		0.0	62.7	46.7	954.4
	Maximum		17.0	78.4	79.1	956.7
	Average	76.2	5.6	70.0	65.2	955.3

Notes:

- Dash/Blank data records indicate no data is available for that interval.
- Wind direction is a daily (24-hr) average value; with the origin of wind in degrees; clockwise from North calculated with vector averaging.