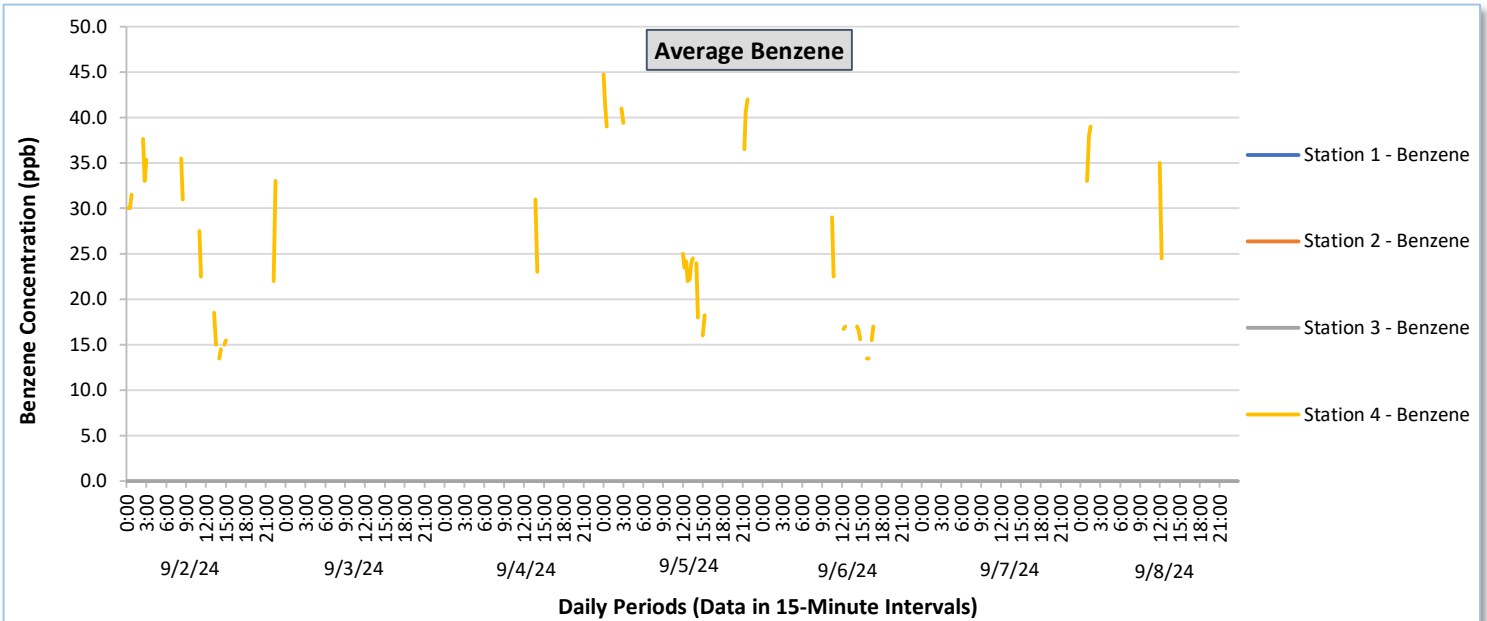
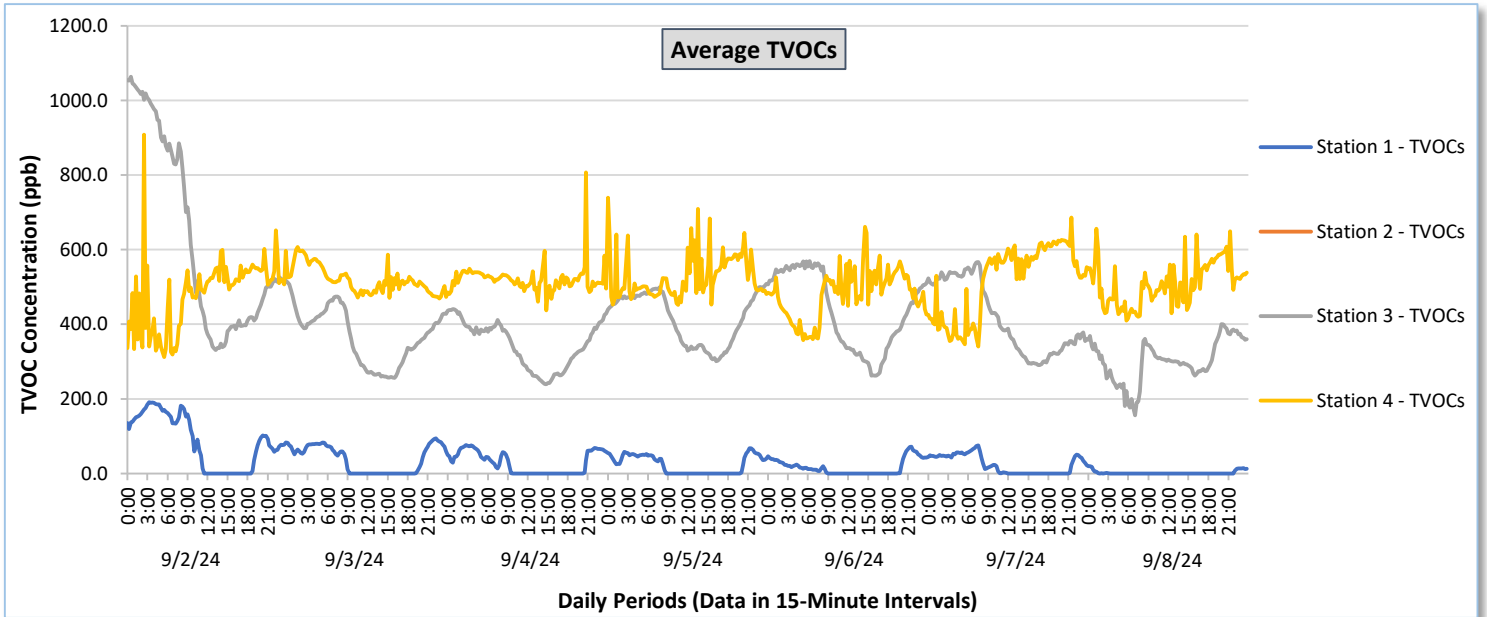




Perimeter Air Monitoring Weekly Report

Real-Time Multigas Monitoring
Bristol Landfill Air Investigation
September 2 - September 8, 2024

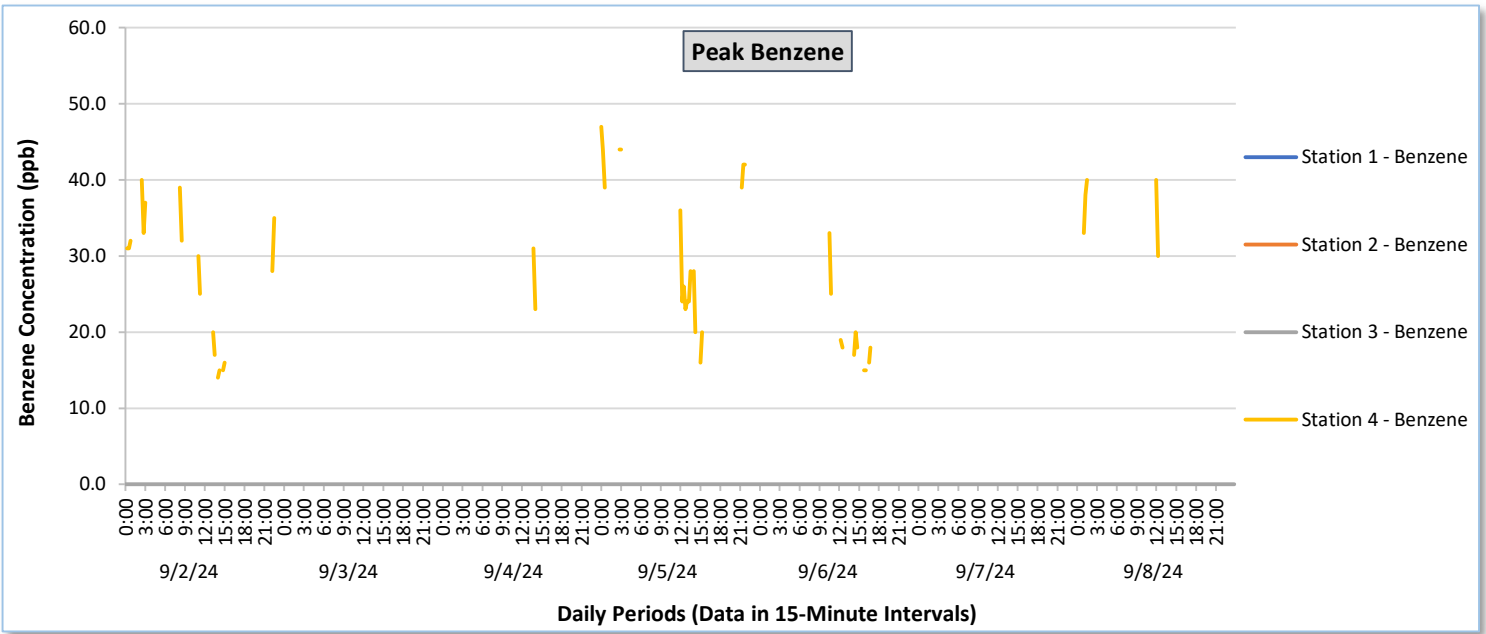
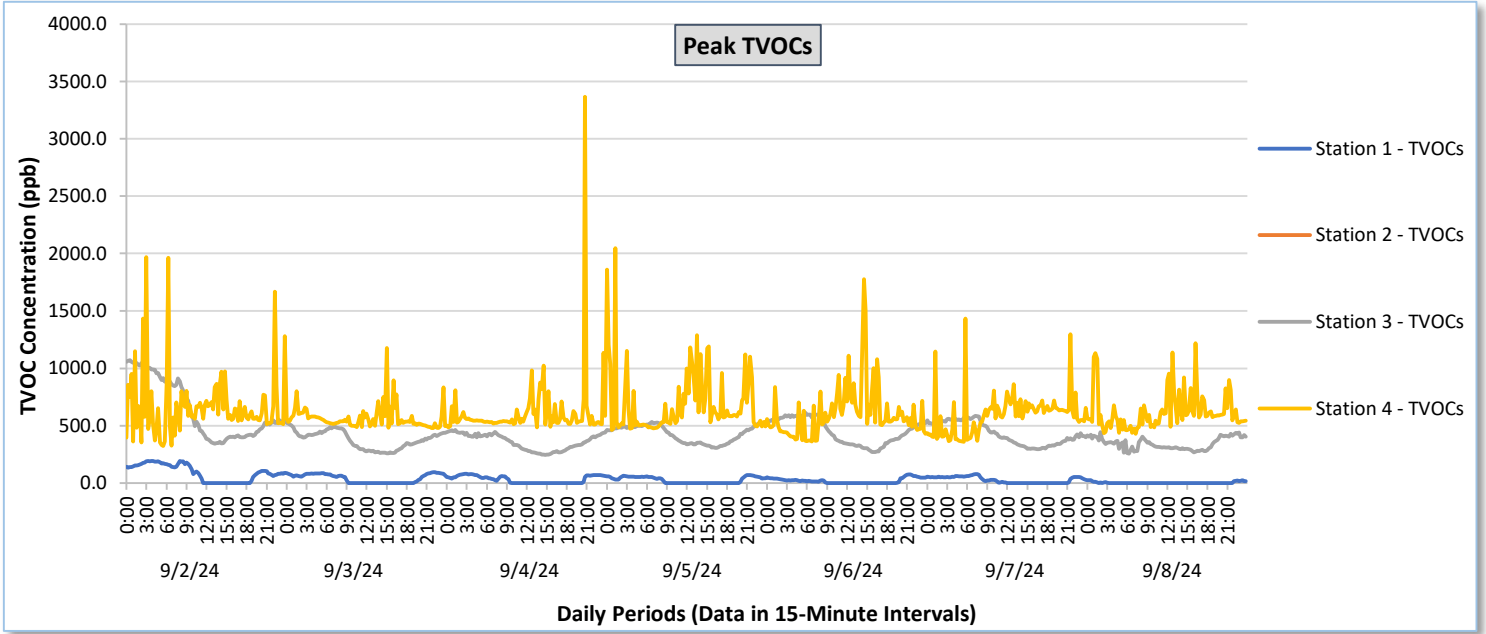




Perimeter Air Monitoring Weekly Report

Real-Time Multigas Monitoring
Bristol Landfill Air Investigation

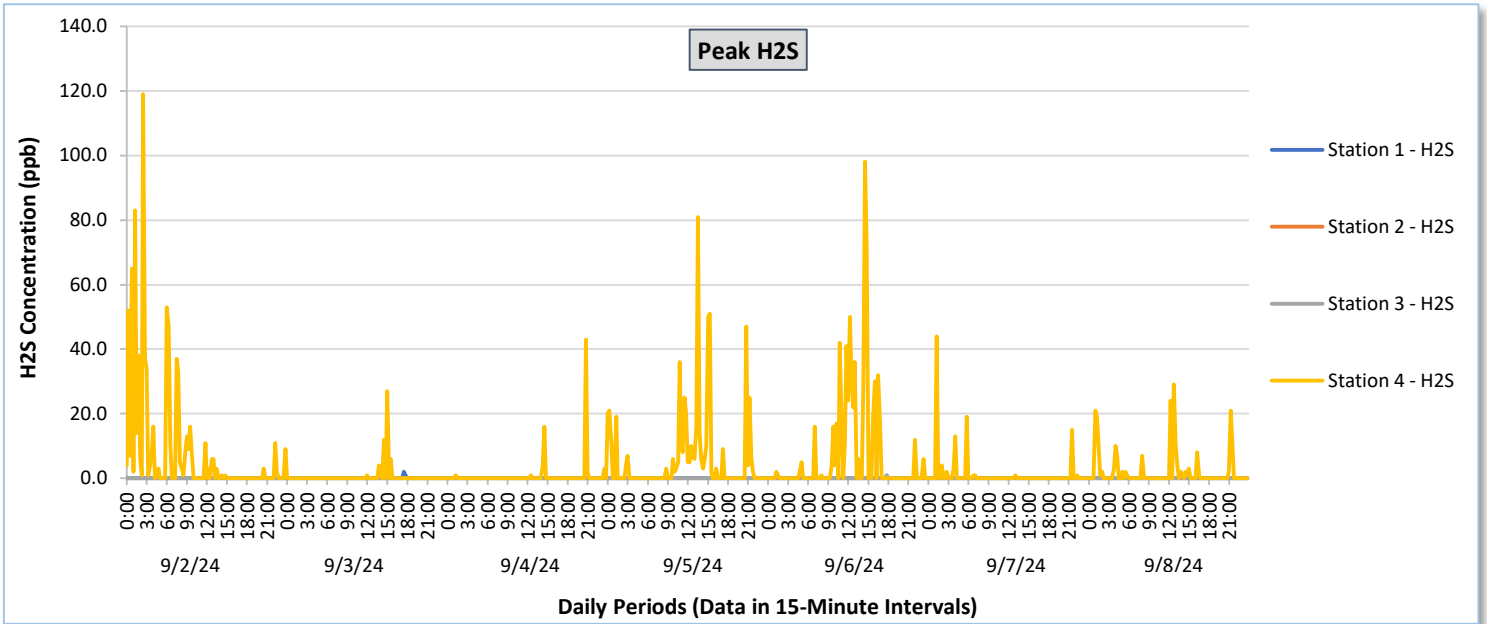
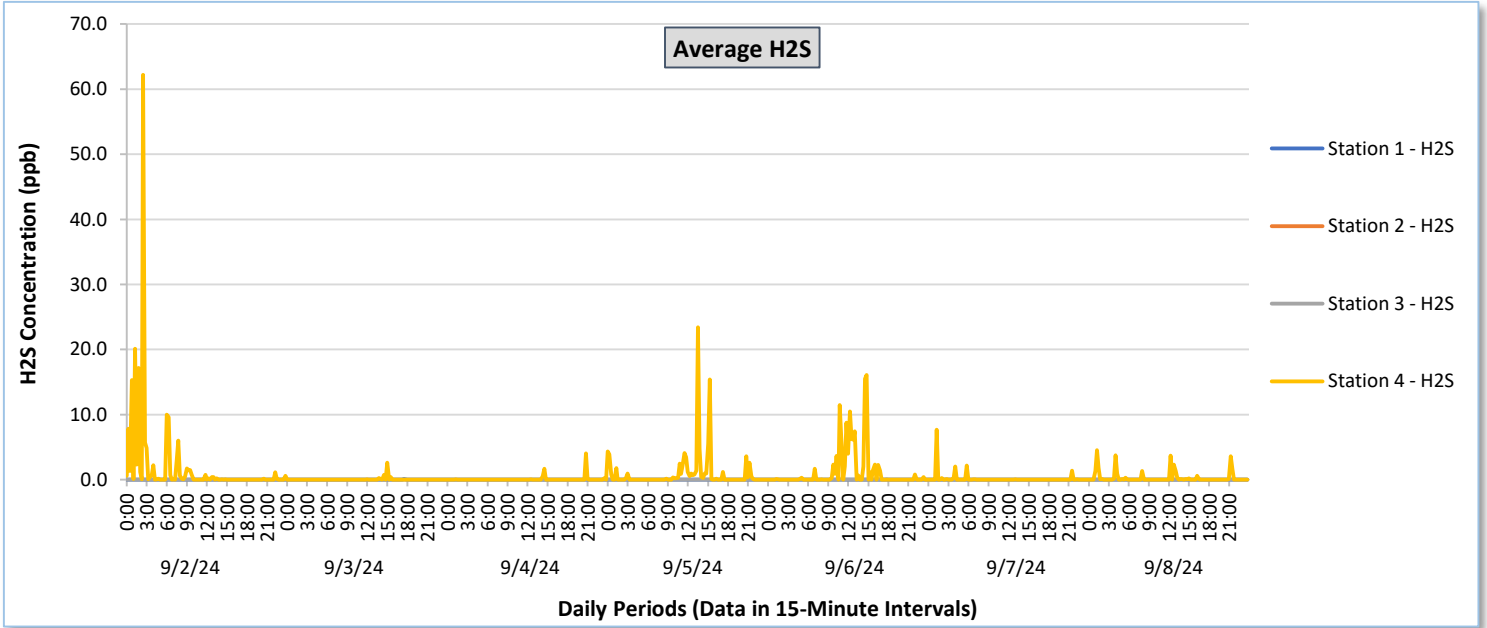
September 2 - September 8, 2024





Perimeter Air Monitoring Weekly Report

Real-Time Multigas Monitoring
Bristol Landfill Air Investigation
September 2 - September 8, 2024





Perimeter Air Monitoring Weekly Report

Real-Time Multigas Monitoring
Bristol Landfill Air Investigation
September 2 - September 8, 2024

Date	Daily Statistics	Station 1						Station 2						Station 3						Station 4					
		TVOCs		H2S		Benzene		TVOCs		H2S		Benzene		TVOCs		H2S		Benzene		TVOCs		H2S		Benzene	
		Average ppb	Peak ppb	Average ppb	Peak ppb	Average ppb	Peak ppb	Average ppb	Peak ppb	Average ppb	Peak ppb	Average ppb	Peak ppb	Average ppb	Peak ppb	Average ppb	Peak ppb	Average ppb	Peak ppb	Average ppb	Peak ppb	Average ppb	Peak ppb	Average ppb	Peak ppb
September 2, 2024	Minimum	0.0	0.0	0.0	0.0	0.0	0.0	-	-	-	-	-	-	330.4	342.0	0.0	0.0	0.0	0.0	311.8	323.0	0.0	0.0	13.5	14.0
	Maximum	191.3	193.0	0.0	0.0	0.0	0.0	-	-	-	-	-	-	1,063.2	1,072.0	0.0	0.0	0.0	0.0	907.9	1,969.0	62.2	119.0	37.7	40.0
	Average	85.8	91.4	0.0	0.0	-	-	-	-	-	-	-	-	629.0	642.9	0.0	0.0	0.0	0.0	483.5	671.9	1.9	8.3	27.3	29.1
September 3, 2024	Minimum	0.0	0.0	0.0	0.0	-	-	-	-	-	-	-	-	256.3	259.0	0.0	0.0	0.0	0.0	469.1	479.0	0.0	0.0	19.0	19.0
	Maximum	94.3	97.0	0.1	2.0	-	-	-	-	-	-	-	-	511.4	524.0	0.0	0.0	0.0	0.0	607.3	1,176.0	2.6	27.0	36.5	38.0
	Average	37.6	39.8	0.0	0.0	-	-	-	-	-	-	-	-	367.2	377.4	0.0	0.0	0.0	0.0	518.4	566.3	0.0	0.5	25.6	28.2
September 4, 2024	Minimum	0.0	0.0	0.0	0.0	-	-	-	-	-	-	-	-	239.0	244.0	0.0	0.0	0.0	0.0	437.7	484.0	0.0	0.0	23.0	23.0
	Maximum	75.8	78.0	0.0	0.0	-	-	-	-	-	-	-	-	440.9	464.0	0.0	0.0	0.0	0.0	806.6	3,367.0	4.1	43.0	46.7	49.0
	Average	27.6	30.2	0.0	0.0	-	-	-	-	-	-	-	-	345.0	359.3	0.0	0.0	0.0	0.0	520.4	614.6	0.1	0.7	32.1	35.5
September 5, 2024	Minimum	0.0	0.0	0.0	0.0	-	-	-	-	-	-	-	-	301.1	306.0	0.0	0.0	0.0	0.0	451.9	462.0	0.0	0.0	16.0	16.0
	Maximum	67.7	69.0	0.0	0.0	-	-	-	-	-	-	-	-	508.0	531.0	0.0	0.0	0.0	0.0	739.4	2,049.0	23.4	81.0	44.8	47.0
	Average	23.5	25.8	0.0	0.0	-	-	-	-	-	-	-	-	415.6	427.7	0.0	0.0	0.0	0.0	528.5	690.1	1.0	6.0	30.1	32.5
September 6, 2024	Minimum	0.0	0.0	0.0	0.0	-	-	-	-	-	-	-	-	262.2	269.0	0.0	0.0	0.0	0.0	357.9	361.0	0.0	0.0	13.5	15.0
	Maximum	71.5	75.0	0.0	0.0	-	-	-	-	-	-	-	-	569.1	612.0	0.1	1.0	0.0	0.0	661.1	1,777.0	16.1	98.0	39.5	42.0
	Average	16.6	18.6	0.0	0.0	-	-	-	-	-	-	-	-	436.6	451.5	0.0	0.0	0.0	0.0	480.2	605.6	1.2	7.0	20.4	22.1
September 7, 2024	Minimum	0.0	0.0	0.0	0.0	-	-	-	-	-	-	-	-	290.4	295.0	0.0	0.0	0.0	0.0	340.2	357.0	0.0	0.0	22.5	27.0
	Maximum	74.9	77.0	0.0	0.0	-	-	-	-	-	-	-	-	566.8	584.0	0.0	0.0	0.0	0.0	685.5	1,431.0	7.7	44.0	33.5	36.0
	Average	24.1	26.7	0.0	0.0	-	-	-	-	-	-	-	-	415.6	431.9	0.0	0.0	0.0	0.0	517.6	594.7	0.1	1.1	29.9	33.0
September 8, 2024	Minimum	0.0	0.0	0.0	0.0	-	-	-	-	-	-	-	-	155.8	255.0	0.0	0.0	0.0	0.0	409.4	431.0	0.0	0.0	13.0	16.0
	Maximum	20.3	24.0	0.0	0.0	-	-	-	-	-	-	-	-	400.4	445.0	0.0	0.0	0.0	0.0	655.8	1,219.0	4.6	29.0	39.0	40.0
	Average	1.9	2.8	0.0	0.0	-	-	-	-	-	-	-	-	302.1	344.0	0.0	0.0	0.0	0.0	508.8	618.3	0.3	2.1	25.1	27.5

Notes:

- Data records with a dash indicate no data is available for that interval.
- Calibration readings and data produced during periods of sensor downtime and/or maintenance are excluded from the report.
- Station 2 shut down on 7/30/2024 due to technical problems and is scheduled for maintenance.
- The CTair monitoring systems at each station are programmed to initiate benzene sampling when a TVOC reading of ≥ 160 ppb is measured. It has been observed that there are occurrences of TVOC readings ≥ 160 ppb where the benzene sampling was not initiated. The affected stations and periods are detailed in the monitoring systems daily reports. The equipment supplier has been notified of this issue and a corrective action will be implemented when provided.
- As discussed with the manufacturer of the H₂S sensor, there is high likelihood that the H₂S sensor has cross sensitivity with other sulfur compounds, including, but are not limited to, carbonyl sulfide, dimethyl sulfide, dimethyl disulfide, and methyl mercaptan. The potential for cross sensitivity with other reduced sulfur compounds must be considered when interpreting H₂S levels recorded by the sensors.



Perimeter Air Monitoring Weekly Report

Real-Time Multigas Monitoring
Bristol Landfill Air Investigation

September 2 - September 8, 2024

Date	Daily Statistics	Bristol Met Station				
		Wind Dir degrees	Wind Speed mph	Temp °F	Rel Humidity %	Baro mbar
September 2, 2024	Minimum		0.0	65.3	58.0	951.0
	Maximum		13.0	80.0	97.0	955.7
	Average	146.5	2.2	71.4	81.4	952.8
September 3, 2024	Minimum		0.0	63.1	53.6	955.2
	Maximum		12.0	78.5	78.7	958.7
	Average	70.0	4.1	72.1	66.8	956.7
September 4, 2024	Minimum		0.0	56.1	46.2	958.1
	Maximum		14.0	74.2	79.0	961.4
	Average	68.9	3.9	64.6	65.4	959.6
September 5, 2024	Minimum		0.0	58.9	41.4	955.1
	Maximum		9.0	79.5	83.6	960.0
	Average	96.5	2.5	68.3	68.1	957.6
September 6, 2024	Minimum		0.0	57.1	31.0	948.7
	Maximum		9.0	81.3	91.8	955.5
	Average	138.4	1.5	68.5	71.0	952.3
September 7, 2024	Minimum		0.0	54.0	42.1	947.3
	Maximum		12.0	70.9	93.6	952.2
	Average	201.9	2.3	62.7	70.7	949.5
September 8, 2024	Minimum		0.0	43.7	27.7	951.9
	Maximum		11.0	73.7	90.6	955.0
	Average	130.1	1.9	58.0	62.0	953.3

Notes:

- Dash/Blank data records indicate no data is available for that interval.
- Wind direction is a daily (24-hr) average value; with the origin of wind in degrees; clockwise from North calculated with vector averaging.