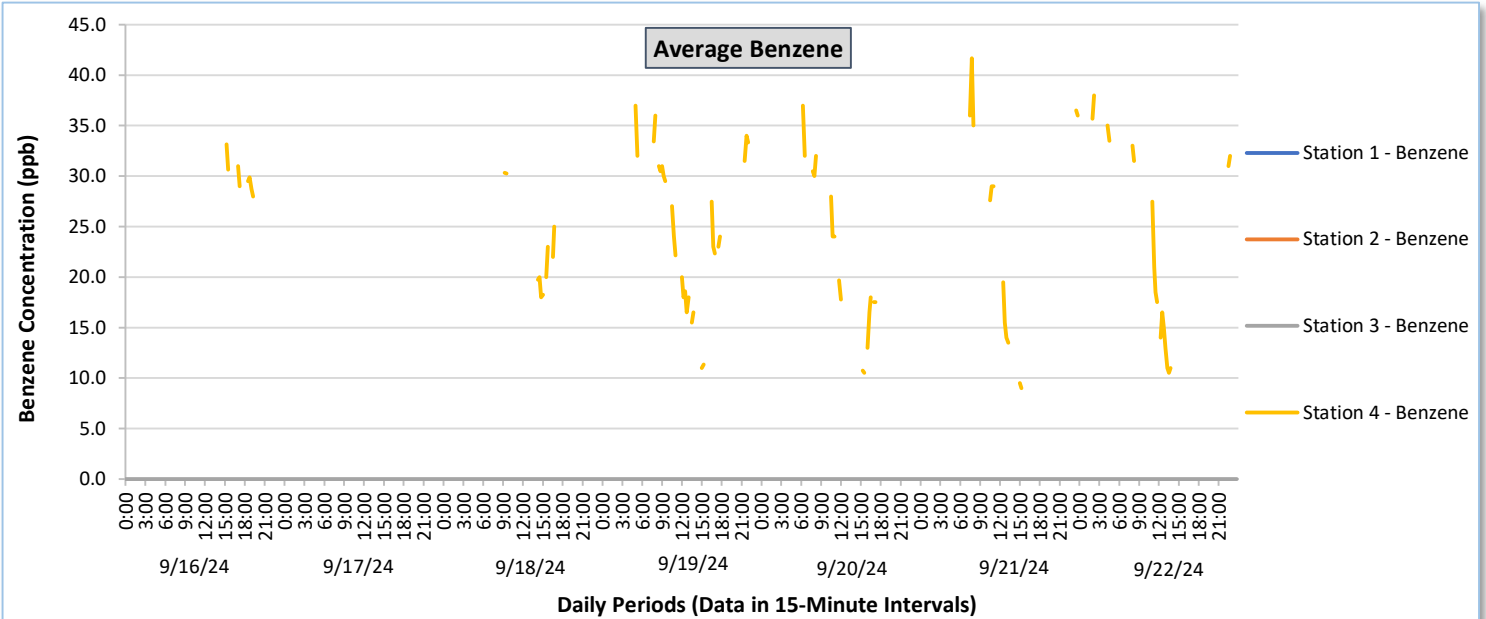
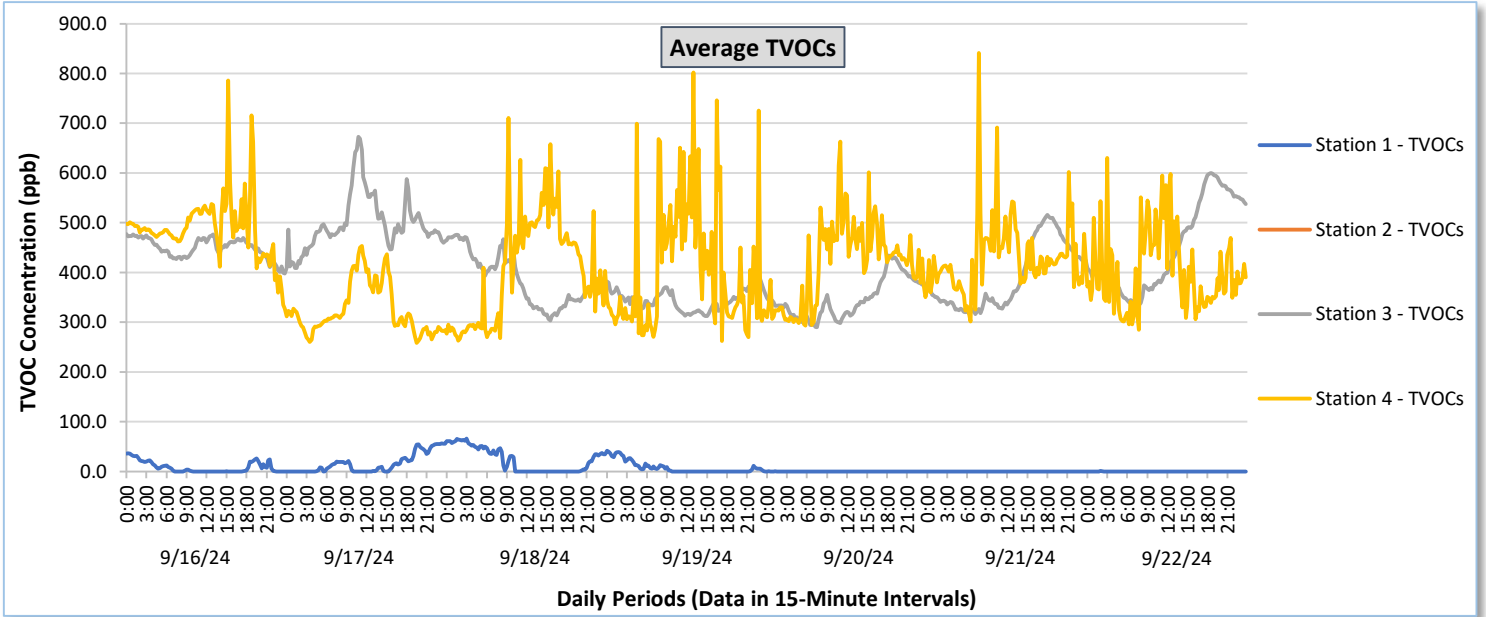




# Perimeter Air Monitoring Weekly Report

Real-Time Multigas Monitoring  
Bristol Landfill Air Investigation

September 16 - September 22, 2024

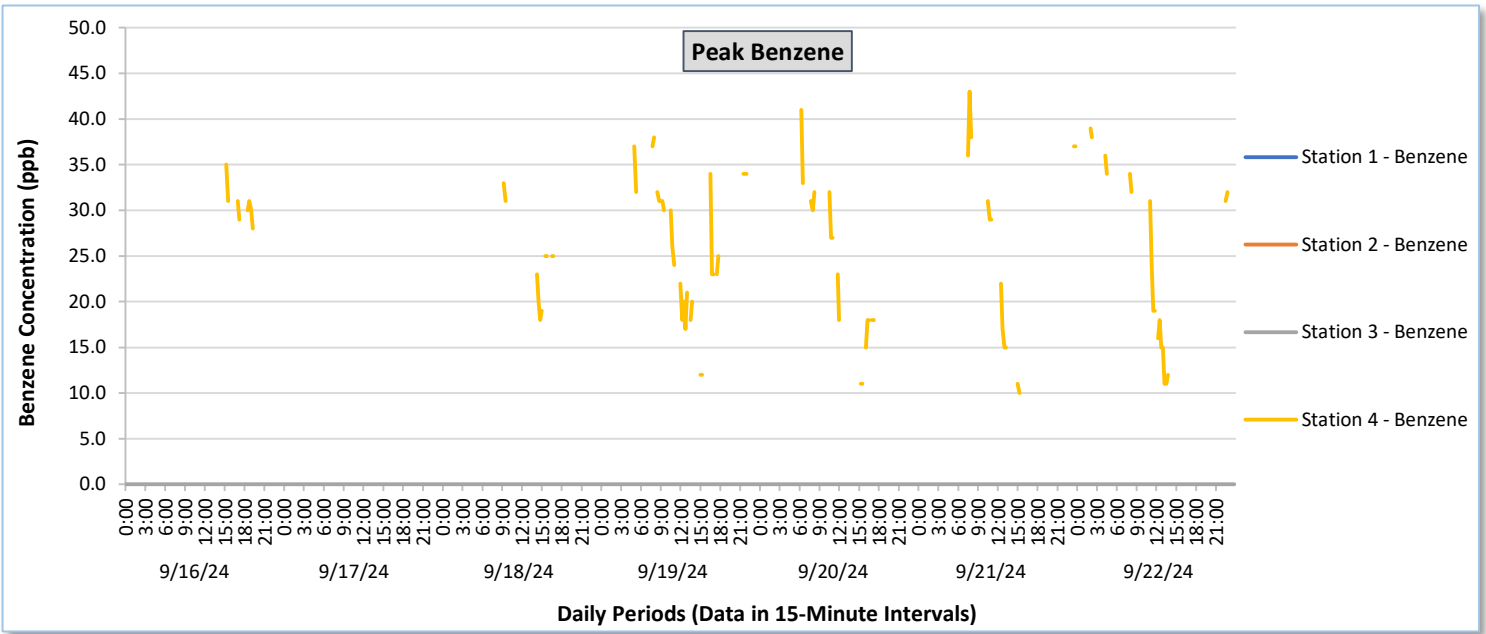
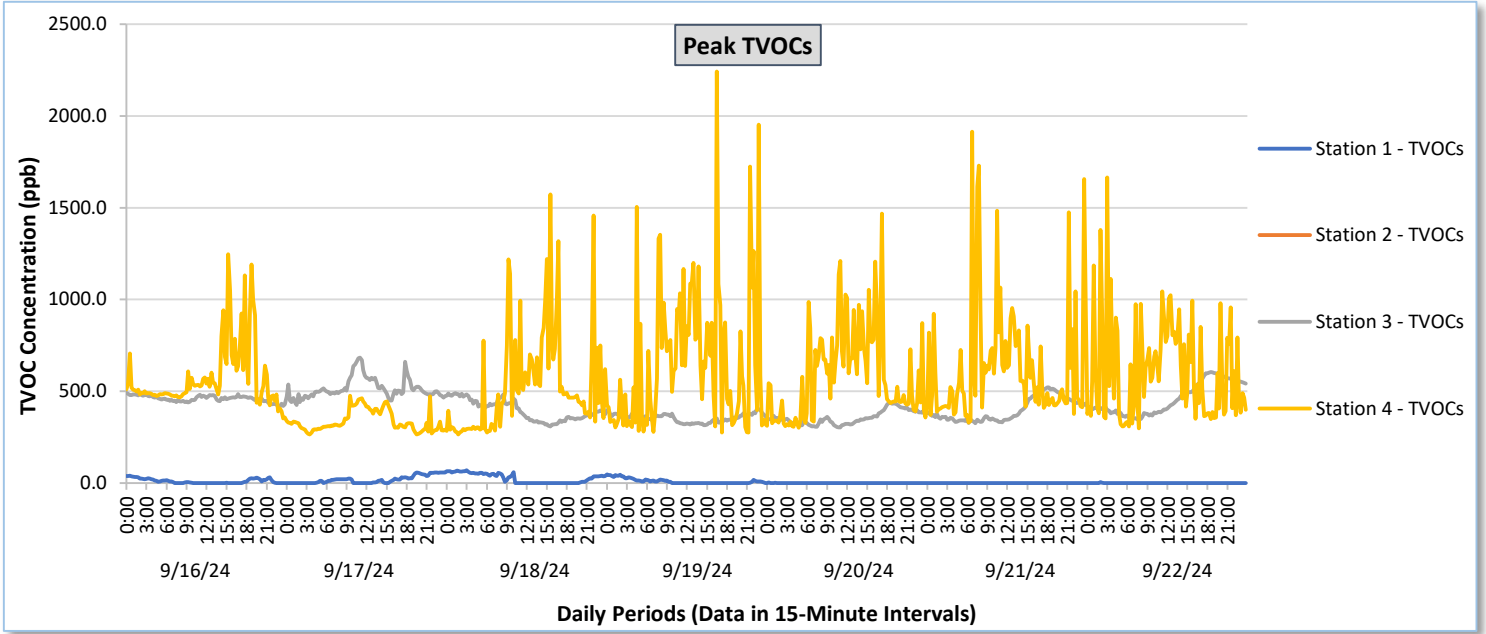




# Perimeter Air Monitoring Weekly Report

Real-Time Multigas Monitoring  
Bristol Landfill Air Investigation

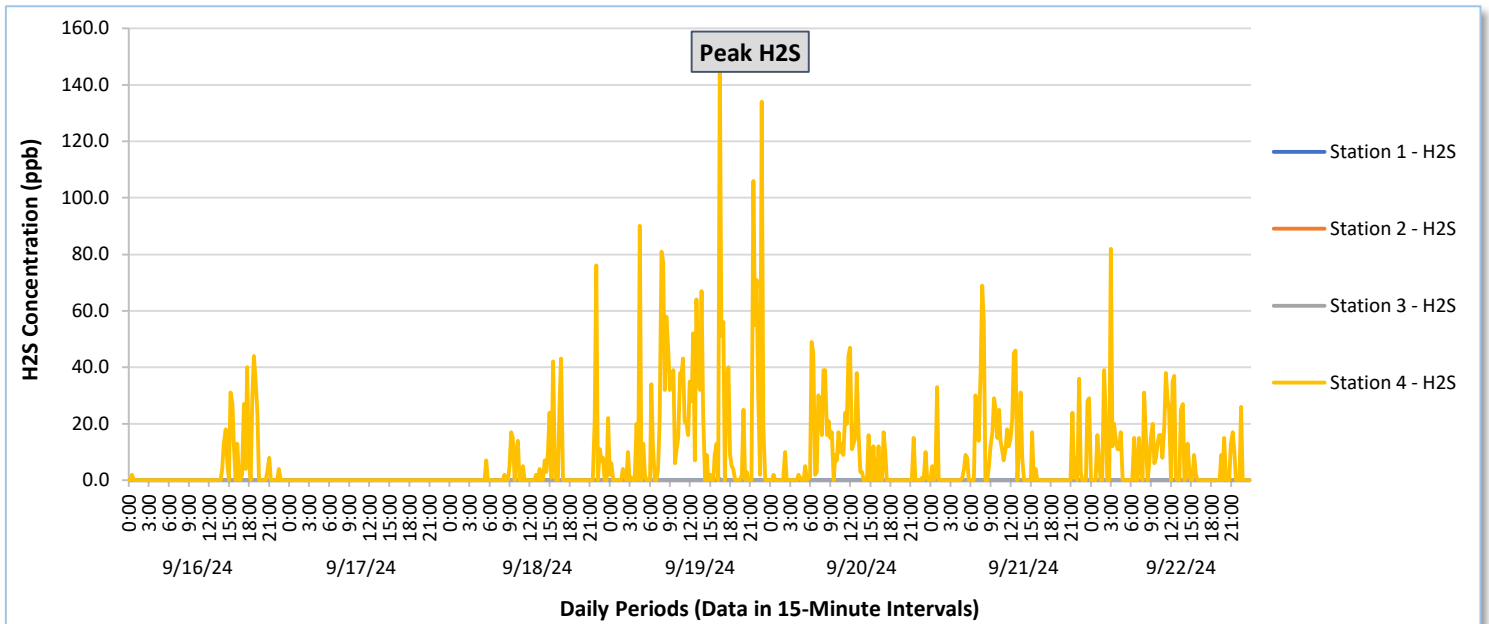
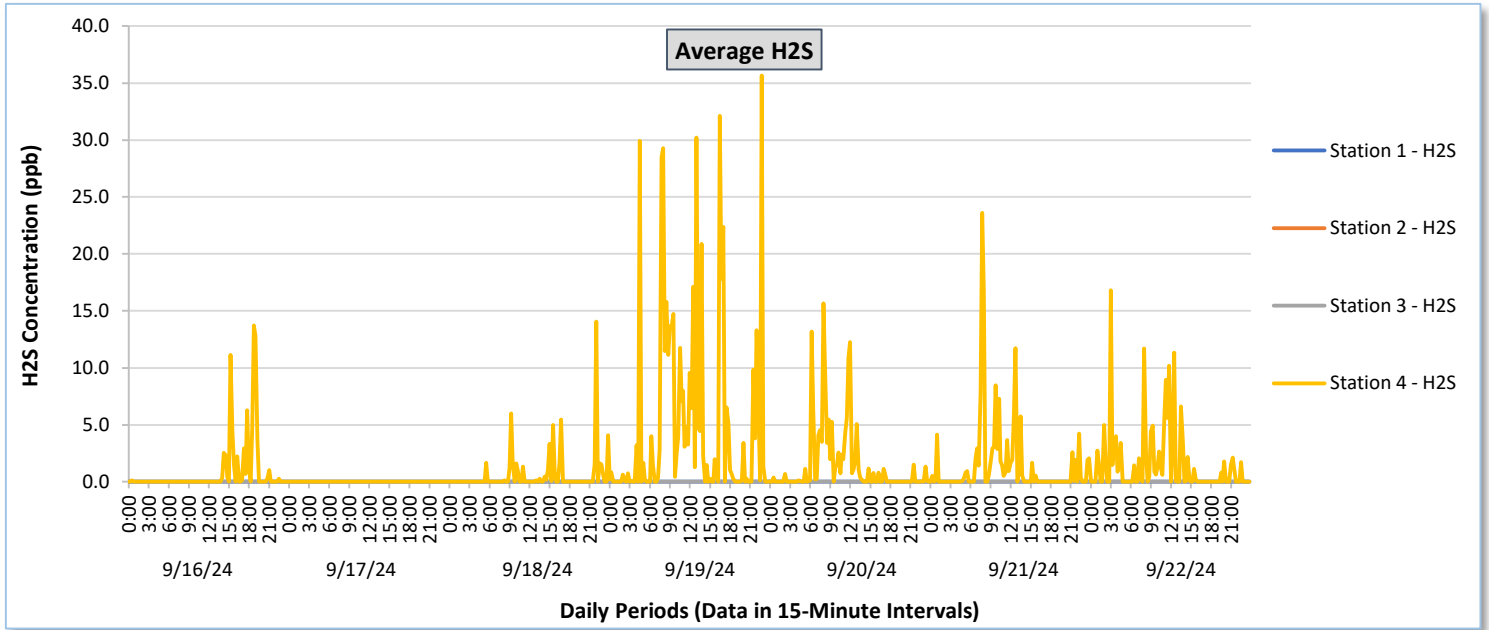
September 16 - September 22, 2024





# Perimeter Air Monitoring Weekly Report

Real-Time Multigas Monitoring  
Bristol Landfill Air Investigation  
September 16 - September 22, 2024





# Perimeter Air Monitoring Weekly Report

Real-Time Multigas Monitoring  
Bristol Landfill Air Investigation  
September 16 - September 22, 2024

Date	Daily Statistics	Station 1						Station 2						Station 3						Station 4					
		TVOCs		H2S		Benzene		TVOCs		H2S		Benzene		TVOCs		H2S		Benzene		TVOCs		H2S		Benzene	
		Average ppb	Peak ppb	Average ppb	Peak ppb	Average ppb	Peak ppb	Average ppb	Peak ppb	Average ppb	Peak ppb	Average ppb	Peak ppb	Average ppb	Peak ppb	Average ppb	Peak ppb	Average ppb	Peak ppb	Average ppb	Peak ppb	Average ppb	Peak ppb	Average ppb	Peak ppb
September 16, 2024	Minimum	0.0	0.0	0.0	0.0	-	-	-	-	-	-	-	-	398.0	416.0	0.0	0.0	0.0	0.0	327.5	351.0	0.0	0.0	28.0	28.0
	Maximum	36.4	39.0	0.0	0.0	-	-	-	-	-	-	-	-	477.3	492.0	0.0	0.0	0.0	0.0	786.1	1,246.0	13.7	44.0	33.1	35.0
	Average	8.5	10.1	0.0	0.0	-	-	-	-	-	-	-	-	449.4	460.0	0.0	0.0	0.0	0.0	487.8	571.2	0.8	3.7	29.9	30.9
September 17, 2024	Minimum	0.0	0.0	0.0	0.0	-	-	-	-	-	-	-	-	408.8	425.0	0.0	0.0	0.0	0.0	258.3	264.0	0.0	0.0	0.0	0.0
	Maximum	56.2	59.0	0.0	0.0	-	-	-	-	-	-	-	-	672.7	683.0	0.0	0.0	0.0	0.0	453.5	475.0	0.0	0.0	0.0	0.0
	Average	15.9	18.0	0.0	0.0	-	-	-	-	-	-	-	-	498.5	515.1	0.0	0.0	0.0	0.0	325.0	338.1	0.0	0.0	-	-
September 18, 2024	Minimum	0.0	0.0	0.0	0.0	-	-	-	-	-	-	-	-	303.3	308.0	0.0	0.0	0.0	0.0	263.2	266.0	0.0	0.0	18.0	18.0
	Maximum	66.3	70.0	0.0	0.0	-	-	-	-	-	-	-	-	476.3	490.0	0.0	0.0	0.0	0.0	710.6	1,571.0	14.1	76.0	32.0	34.0
	Average	23.4	26.1	0.0	0.0	-	-	-	-	-	-	-	-	386.6	396.6	0.0	0.0	0.0	0.0	405.7	528.0	0.6	4.1	24.4	26.3
September 19, 2024	Minimum	0.0	0.0	0.0	0.0	-	-	-	-	-	-	-	-	312.5	315.0	0.0	0.0	0.0	0.0	262.3	275.0	0.0	0.0	11.0	12.0
	Maximum	41.8	46.0	0.1	1.0	-	-	-	-	-	-	-	-	396.5	406.0	0.1	1.0	0.0	0.0	801.8	2,241.0	35.7	148.0	39.0	42.0
	Average	8.0	9.8	0.0	0.0	-	-	-	-	-	-	-	-	344.9	353.6	0.0	0.0	0.0	0.0	404.8	657.0	5.1	20.8	25.1	26.7
September 20, 2024	Minimum	0.0	0.0	0.0	0.0	-	-	-	-	-	-	-	-	289.9	303.0	0.0	0.0	0.0	0.0	293.0	301.0	0.0	0.0	10.5	11.0
	Maximum	0.5	3.0	0.0	0.0	-	-	-	-	-	-	-	-	434.1	437.0	0.0	0.0	0.0	0.0	663.2	1,469.0	15.7	49.0	37.0	41.0
	Average	0.0	0.0	0.0	0.0	-	-	-	-	-	-	-	-	347.1	355.9	0.0	0.0	0.0	0.0	416.2	586.0	1.4	7.7	20.9	22.5
September 21, 2024	Minimum	0.0	0.0	0.0	0.0	-	-	-	-	-	-	-	-	316.1	325.0	0.0	0.0	0.0	0.0	301.3	330.0	0.0	0.0	9.0	10.0
	Maximum	0.0	0.0	0.0	0.0	-	-	-	-	-	-	-	-	515.9	521.0	0.0	0.0	0.0	0.0	841.3	1,913.0	23.6	69.0	41.7	43.0
	Average	0.0	0.0	0.0	0.0	-	-	-	-	-	-	-	-	390.5	398.8	0.0	0.0	0.0	0.0	430.9	636.9	1.5	8.6	25.9	28.3
September 22, 2024	Minimum	0.0	0.0	0.0	0.0	-	-	-	-	-	-	-	-	330.6	346.0	0.0	0.0	0.0	0.0	284.9	298.0	0.0	0.0	9.0	11.0
	Maximum	0.7	5.0	0.0	0.0	-	-	-	-	-	-	-	-	600.4	605.0	0.0	0.0	0.0	0.0	630.3	1,665.0	16.8	82.0	38.0	39.0
	Average	0.0	0.1	0.0	0.0	-	-	-	-	-	-	-	-	450.4	458.0	0.0	0.0	0.0	0.0	402.2	612.4	1.5	8.2	23.5	24.9

**Notes:**

- Data records with a dash indicate no data is available for that interval.
- Calibration readings and data produced during periods of sensor downtime and/or maintenance are excluded from the report.
- Station 2 shut down on 7/30/2024 due to technical problems and is scheduled for maintenance.
- The CTair monitoring systems at each station are programmed to initiate benzene sampling when a TVOC reading of  $\geq 160$  ppb is measured. It has been observed that there are occurrences of TVOC readings  $\geq 160$  ppb where the benzene sampling was not initiated. The affected stations and periods are detailed in the monitoring systems daily reports. The equipment supplier has been notified of this issue and a corrective action will be implemented when provided.
- As discussed with the manufacturer of the H<sub>2</sub>S sensor, there is high likelihood that the H<sub>2</sub>S sensor has cross sensitivity with other sulfur compounds, including, but are not limited to, carbonyl sulfide, dimethyl sulfide, dimethyl disulfide, and methyl mercaptan. The potential for cross sensitivity with other reduced sulfur compounds must be considered when interpreting H<sub>2</sub>S levels recorded by the sensors.



## Perimeter Air Monitoring Weekly Report

Real-Time Multigas Monitoring  
Bristol Landfill Air Investigation

September 16 - September 22, 2024

Date	Daily Statistics	Bristol Met Station				
		Wind Dir degrees	Wind Speed mph	Temp °F	Rel Humidity %	Baro mbar
September 16, 2024	Minimum		0.0	56.3	49.9	953.0
	Maximum		11.0	70.5	90.9	956.0
	Average	106.1	3.0	63.1	75.3	954.8
September 17, 2024	Minimum		0.0	55.9	83.9	946.8
	Maximum		16.0	71.3	95.0	953.0
	Average	90.1	5.0	64.8	91.5	948.8
September 18, 2024	Minimum		0.0	63.0	59.9	947.1
	Maximum		9.0	78.8	96.5	949.5
	Average	102.6	2.1	69.6	84.4	948.2
September 19, 2024	Minimum		0.0	61.4	56.4	946.5
	Maximum		7.0	81.6	96.7	949.7
	Average	139.6	1.3	69.9	83.4	948.1
September 20, 2024	Minimum		0.0	59.9	38.6	947.0
	Maximum		8.0	84.8	96.5	949.6
	Average	153.9	1.3	71.3	74.7	948.2
September 21, 2024	Minimum		0.0	60.8	48.6	948.4
	Maximum		11.0	83.2	93.6	951.3
	Average	164.9	1.8	71.8	73.8	949.7
September 22, 2024	Minimum		0.0	60.7	37.4	947.3
	Maximum		11.0	87.2	95.6	950.3
	Average	145.6	1.3	73.5	72.2	948.8

**Notes:**

- Dash/Blank data records indicate no data is available for that interval.
- Wind direction is a daily (24-hr) average value; with the origin of wind in degrees; clockwise from North calculated with vector averaging.