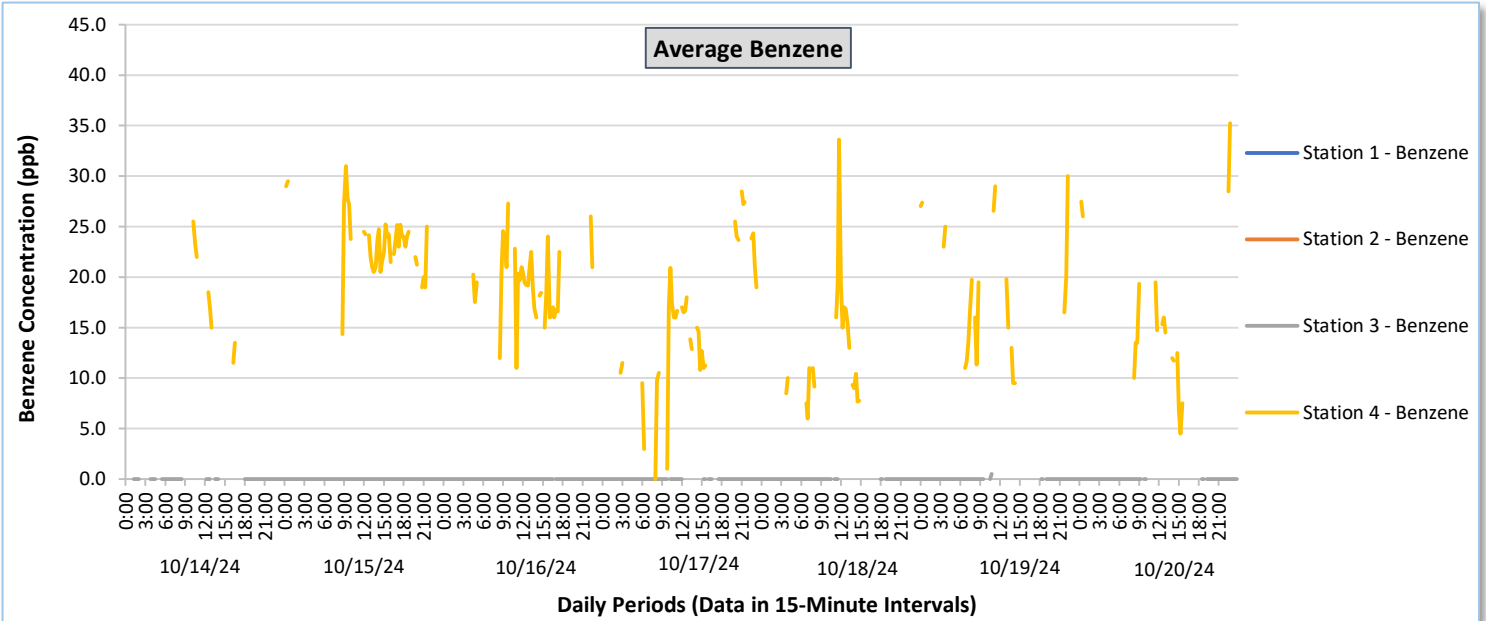
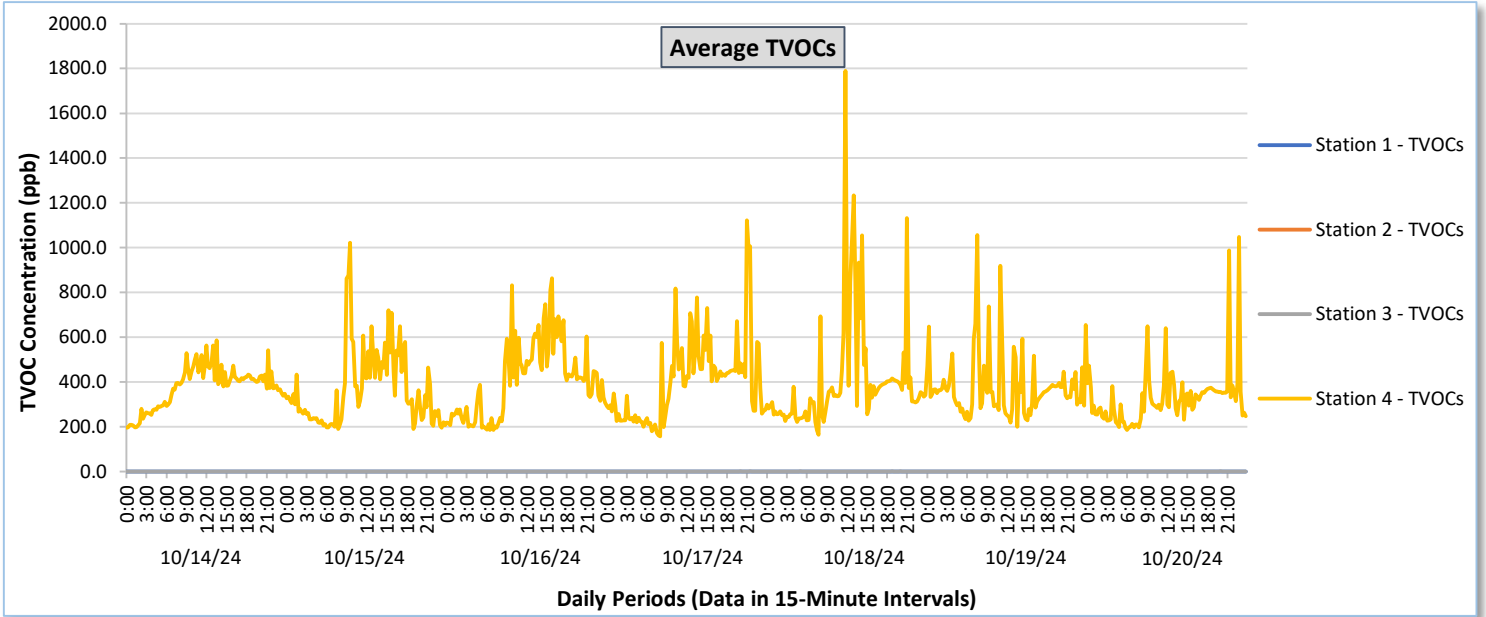




# Perimeter Air Monitoring Weekly Report

Real-Time Multigas Monitoring  
Bristol Landfill Air Investigation

October 14 - October 20, 2024

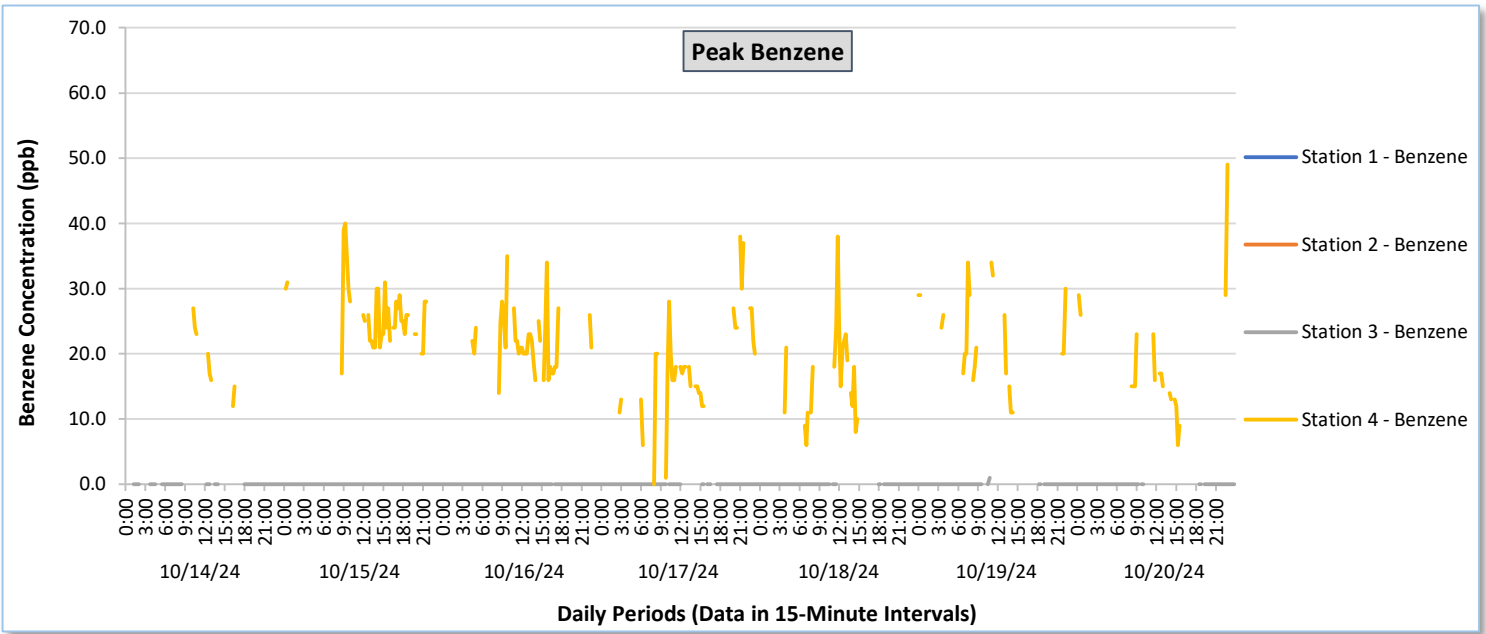
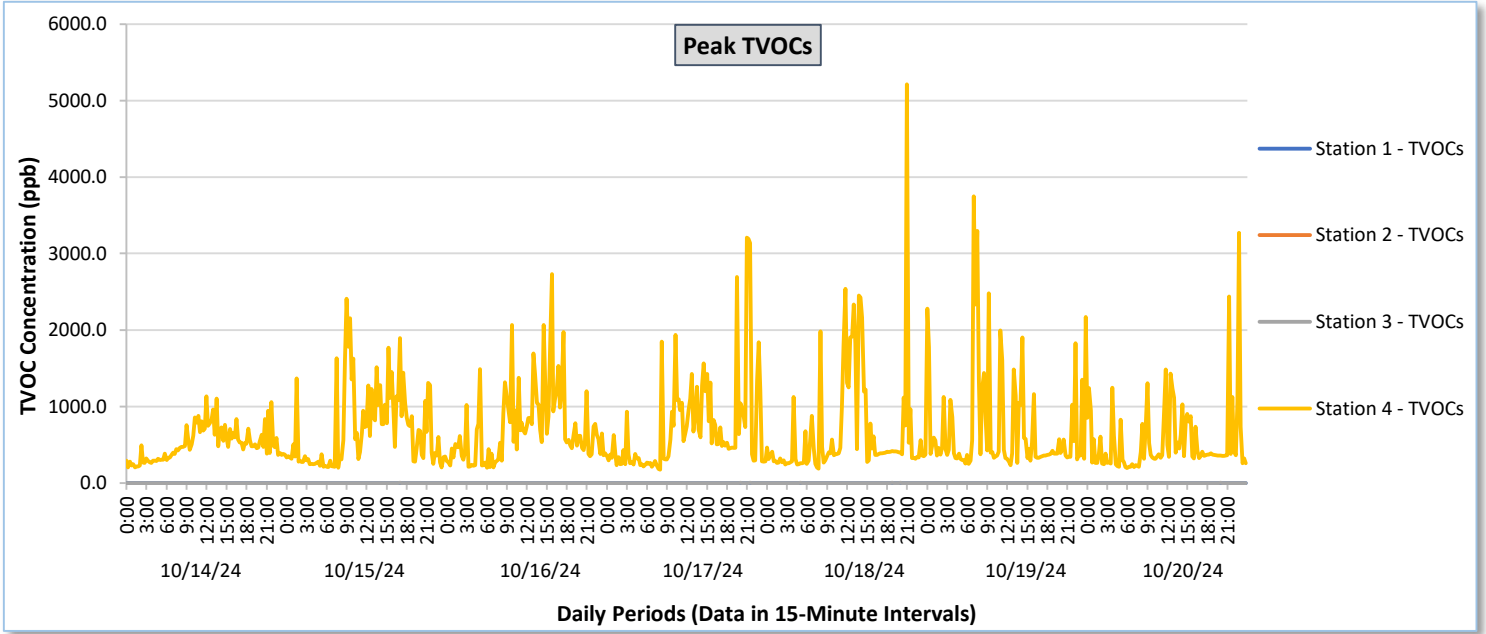




# Perimeter Air Monitoring Weekly Report

Real-Time Multigas Monitoring  
Bristol Landfill Air Investigation

October 14 - October 20, 2024

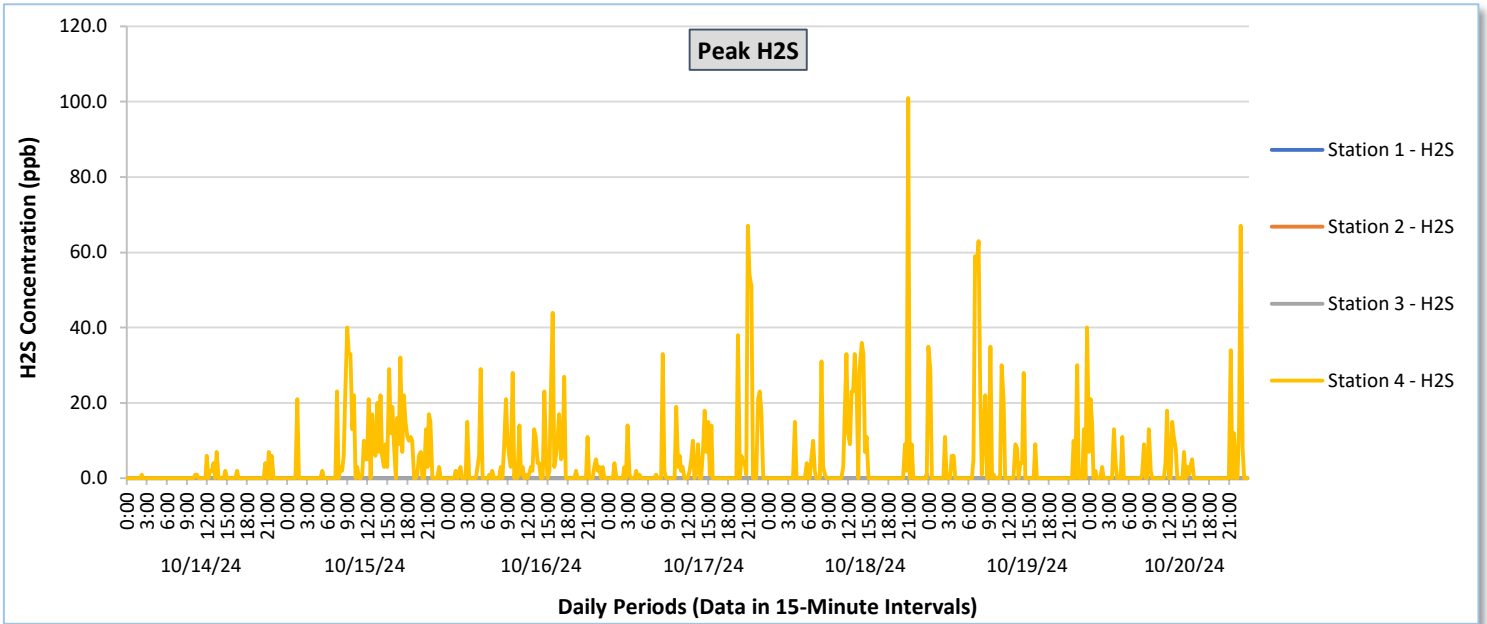
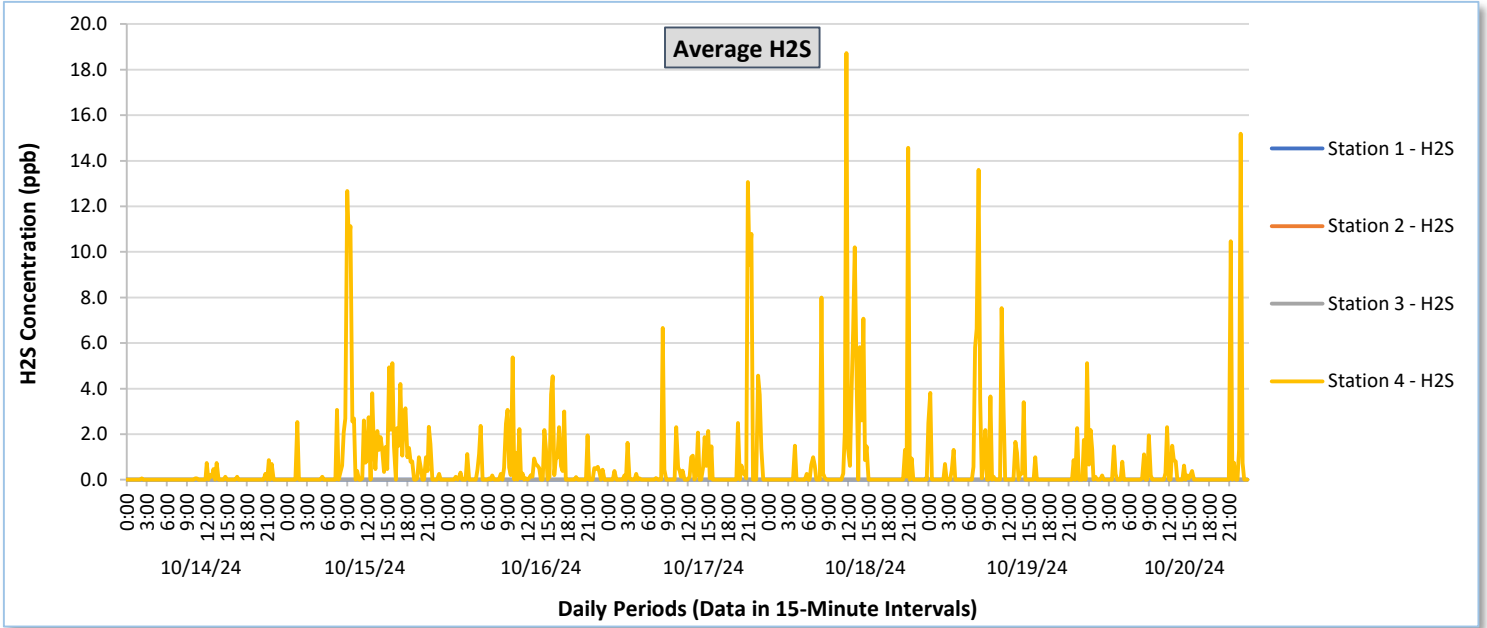




# Perimeter Air Monitoring Weekly Report

Real-Time Multigas Monitoring  
Bristol Landfill Air Investigation

October 14 - October 20, 2024





## Perimeter Air Monitoring Weekly Report

Real-Time Multigas Monitoring  
Bristol Landfill Air Investigation  
October 14 - October 20, 2024

Date	Daily Statistics	Station 1						Station 2						Station 3						Station 4					
		TVOCs		H2S		Benzene		TVOCs		H2S		Benzene		TVOCs		H2S		Benzene		TVOCs		H2S		Benzene	
		Average ppb	Peak ppb	Average ppb	Peak ppb	Average ppb	Peak ppb	Average ppb	Peak ppb	Average ppb	Peak ppb	Average ppb	Peak ppb	Average ppb	Peak ppb	Average ppb	Peak ppb	Average ppb	Peak ppb	Average ppb	Peak ppb	Average ppb	Peak ppb	Average ppb	Peak ppb
		Values from 15-minute intervals.	1-minute max within each 15 minute interval.	Values from 15-minute intervals.	1-minute max within each 15 minute interval.	Values from 15-minute intervals.	1-minute max within each 15 minute interval.	Values from 15-minute intervals.	1-minute max within each 15 minute interval.	Values from 15-minute intervals.	1-minute max within each 15 minute interval.	Values from 15-minute intervals.	1-minute max within each 15 minute interval.	Values from 15-minute intervals.	1-minute max within each 15 minute interval.	Values from 15-minute intervals.	1-minute max within each 15 minute interval.	Values from 15-minute intervals.	1-minute max within each 15 minute interval.	Values from 15-minute intervals.	1-minute max within each 15 minute interval.	Values from 15-minute intervals.	1-minute max within each 15 minute interval.	Values from 15-minute intervals.	1-minute max within each 15 minute interval.
October 14, 2024	Minimum	0.0	0.0	0.0	0.0	-	-	-	-	-	-	-	-	-	-	-	-	-	195.7	205.0	0.0	0.0	11.5	12.0	
	Maximum	0.0	0.0	0.0	0.0	-	-	-	-	-	-	-	-	-	-	-	-	-	586.1	1,135.0	0.9	7.0	29.5	30.0	
	Average	0.0	0.0	0.0	0.0	-	-	-	-	-	-	-	-	-	-	-	-	-	377.5	512.6	0.0	0.5	19.6	20.8	
October 15, 2024	Minimum	0.0	0.0	0.0	0.0	-	-	-	-	-	-	-	-	0.0	0.0	0.0	0.0	-	-	190.7	202.0	0.0	0.0	14.3	17.0
	Maximum	0.0	0.0	0.0	0.0	-	-	-	-	-	-	-	-	0.3	5.0	0.0	0.0	-	-	1,022.8	2,408.0	12.7	40.0	33.0	40.0
	Average	0.0	0.0	0.0	0.0	-	-	-	-	-	-	-	-	0.0	0.1	0.0	0.0	-	-	366.0	703.8	1.2	6.7	23.7	26.4
October 16, 2024	Minimum	0.0	0.0	0.0	0.0	-	-	-	-	-	-	-	-	0.0	0.0	0.0	0.0	-	-	186.2	202.0	0.0	0.0	11.0	14.0
	Maximum	0.0	0.0	0.0	0.0	-	-	-	-	-	-	-	-	0.0	0.0	0.0	0.0	-	-	863.7	2,732.0	5.4	44.0	27.3	35.0
	Average	0.0	0.0	0.0	0.0	-	-	-	-	-	-	-	-	0.0	0.0	0.0	0.0	-	-	406.6	719.3	0.5	4.2	19.5	22.2
October 17, 2024	Minimum	0.0	0.0	0.0	0.0	-	-	-	-	-	-	-	-	0.0	0.0	0.0	0.0	-	-	157.1	174.0	0.0	0.0	0.0	0.0
	Maximum	0.0	0.0	0.0	0.0	-	-	-	-	-	-	-	-	0.2	3.0	0.0	0.0	-	-	1,120.7	3,208.0	13.1	67.0	28.5	38.0
	Average	0.0	0.0	0.0	0.0	-	-	-	-	-	-	-	-	0.0	0.0	0.0	0.0	-	-	401.7	727.7	0.7	4.9	15.9	18.5
October 18, 2024	Minimum	0.0	0.0	0.0	0.0	-	-	-	-	-	-	-	-	0.0	0.0	0.0	0.0	-	-	164.3	188.0	0.0	0.0	6.0	6.0
	Maximum	0.0	0.0	0.0	0.0	-	-	-	-	-	-	-	-	0.3	4.0	0.1	1.0	-	-	1,789.3	5,212.0	18.7	101.0	41.8	58.0
	Average	0.0	0.0	0.0	0.0	-	-	-	-	-	-	-	-	0.0	0.1	0.0	0.0	-	-	404.0	675.5	1.0	5.1	15.0	19.8
October 19, 2024	Minimum	0.0	0.0	0.0	0.0	-	-	-	-	-	-	-	-	0.0	0.0	0.0	0.0	-	-	200.5	233.0	0.0	0.0	9.5	11.0
	Maximum	0.0	0.0	0.0	0.0	-	-	-	-	-	-	-	-	0.0	0.0	0.0	0.0	-	-	1,055.7	3,748.0	13.6	63.0	30.3	34.0
	Average	0.0	0.0	0.0	0.0	-	-	-	-	-	-	-	-	0.0	0.0	0.0	0.0	-	-	377.0	718.7	0.8	5.9	19.6	23.1
October 20, 2024	Minimum	0.0	0.0	0.0	0.0	-	-	-	-	-	-	-	-	0.0	0.0	0.0	0.0	-	-	186.0	196.0	0.0	0.0	4.5	6.0
	Maximum	0.0	0.0	0.0	0.0	-	-	-	-	-	-	-	-	0.1	2.0	0.0	0.0	-	-	1,047.7	3,272.0	15.2	67.0	35.2	49.0
	Average	0.0	0.0	0.0	0.0	-	-	-	-	-	-	-	-	0.0	0.0	0.0	0.0	-	-	328.0	547.5	0.5	3.2	17.3	19.9

**Notes:**

- Data records with a dash indicate no data is available for that interval.
- Calibration readings and data produced during periods of sensor downtime and/or maintenance are excluded from the report.
- Station 2 shut down on 7/30/2024 due to technical problems and is scheduled for maintenance.
- The CTair monitoring systems at each station are programmed to initiate benzene sampling when a TVOC reading of  $\geq 160$  ppb is measured. It has been observed that there are occurrences of TVOC readings  $\geq 160$  ppb where the benzene sampling was not initiated. The affected stations and periods are detailed in the monitoring systems daily reports. The equipment supplier has been notified of this issue and a corrective action will be implemented when provided.
- As discussed with the manufacturer of the H2S sensor, there is high likelihood that the H2S sensor has cross sensitivity with other sulfur compounds, including, but are not limited to, carbonyl sulfide, dimethyl sulfide, dimethyl disulfide, and methyl mercaptan. The potential for cross sensitivity with other reduced sulfur compounds must be considered when interpreting H2S levels recorded by the sensors.
- The Met Station experienced an outage due to system reconfiguration and shut down for the week of 10/14 - 10/20.



## Perimeter Air Monitoring Weekly Report

Real-Time Multigas Monitoring  
Bristol Landfill Air Investigation

October 14 - October 20, 2024

Date	Daily Statistics	Bristol Met Station				
		Wind Dir degrees	Wind Speed mph	Temp °F	Rel Humidity %	Baro mbar
October 14, 2024	Minimum		-	-	-	-
	Maximum		-	-	-	-
	Average	-	-	-	-	-
October 15, 2024	Minimum		-	-	-	-
	Maximum		-	-	-	-
	Average	-	-	-	-	-
October 16, 2024	Minimum		-	-	-	-
	Maximum		-	-	-	-
	Average	-	-	-	-	-
October 17, 2024	Minimum		-	-	-	-
	Maximum		-	-	-	-
	Average	-	-	-	-	-
October 18, 2024	Minimum		-	-	-	-
	Maximum		-	-	-	-
	Average	-	-	-	-	-
October 19, 2024	Minimum		-	-	-	-
	Maximum		-	-	-	-
	Average	-	-	-	-	-
October 20, 2024	Minimum		-	-	-	-
	Maximum		-	-	-	-
	Average	-	-	-	-	-

**Notes:**

- Dash/Blank data records indicate no data is available for that interval.
- Wind direction is a daily (24-hr) average value; with the origin of wind in degrees; clockwise from North calculated with vector averaging.