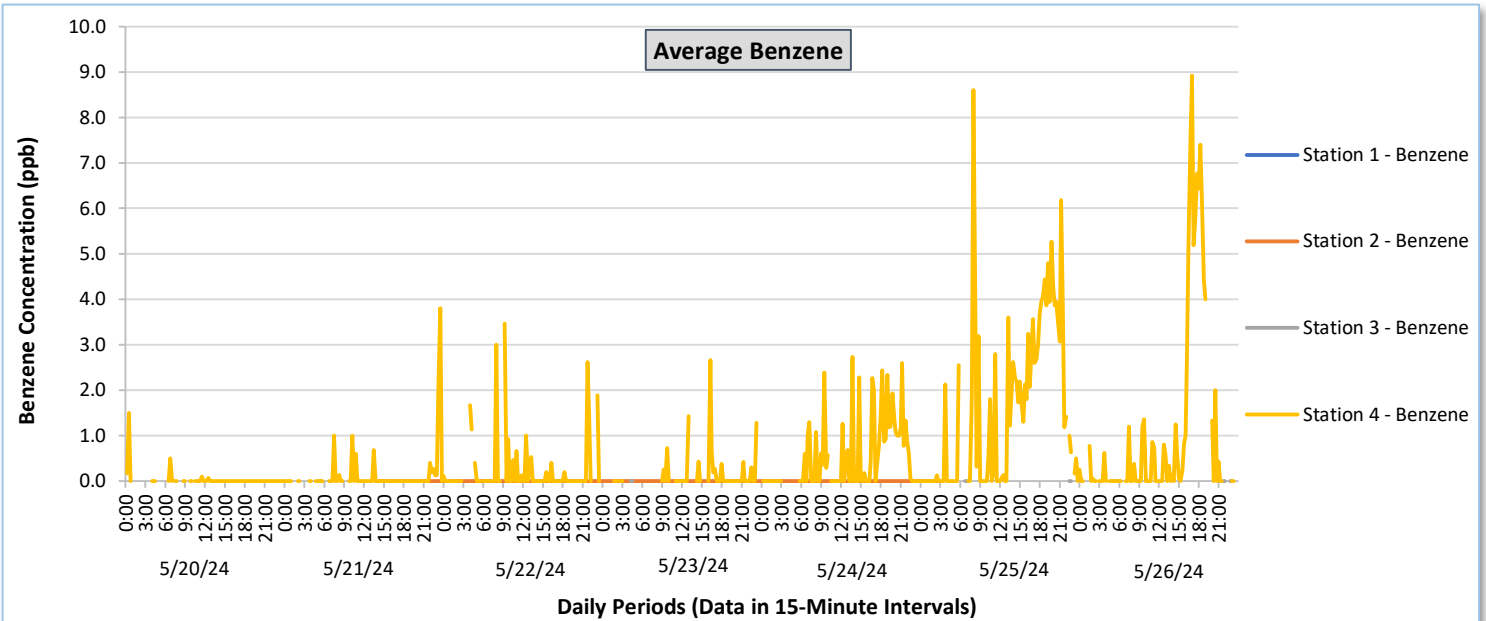
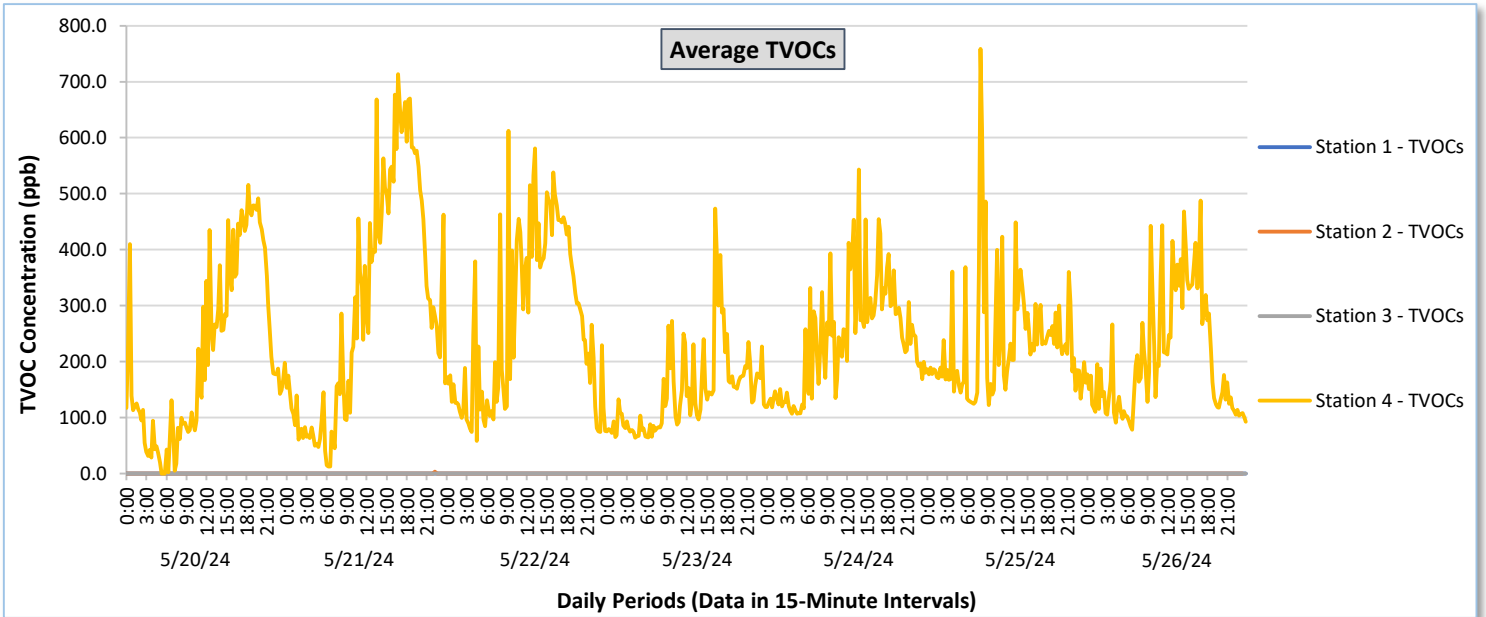




Perimeter Air Monitoring Weekly Report

Real-Time Multigas Monitoring
Bristol Landfill Air Investigation

May 20 - May 26, 2024

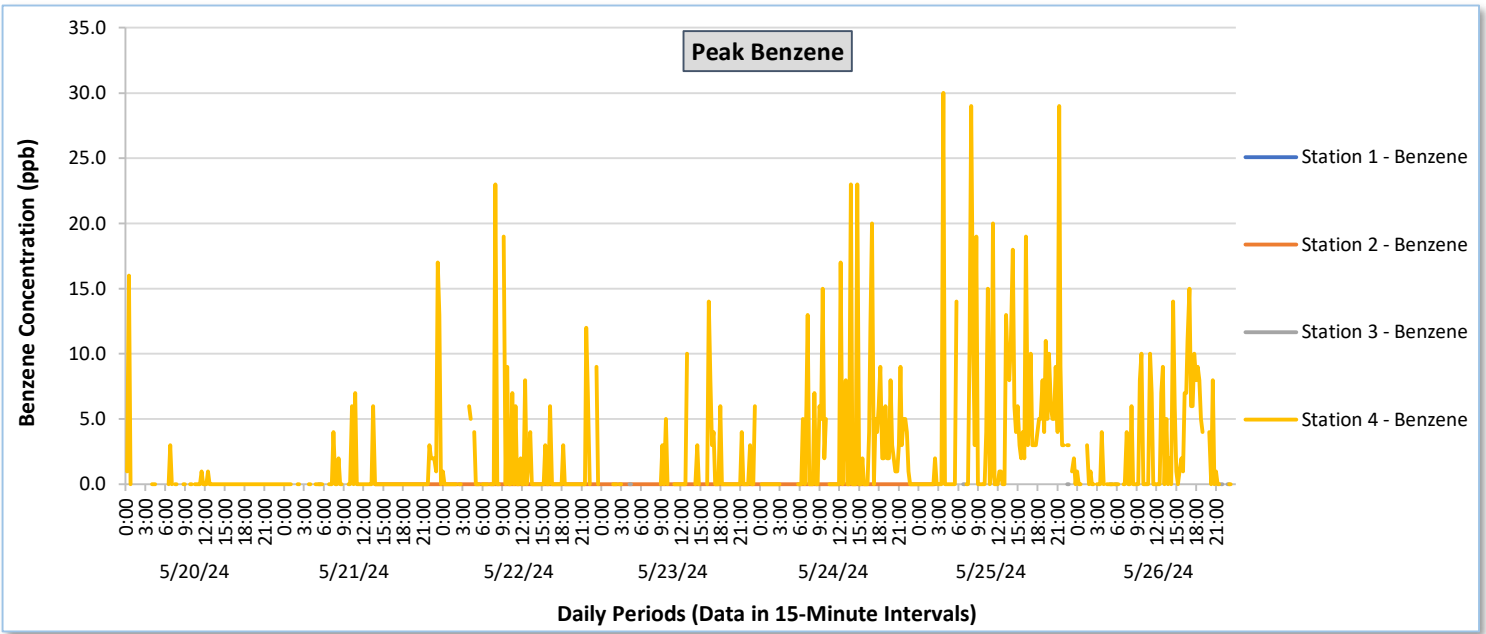
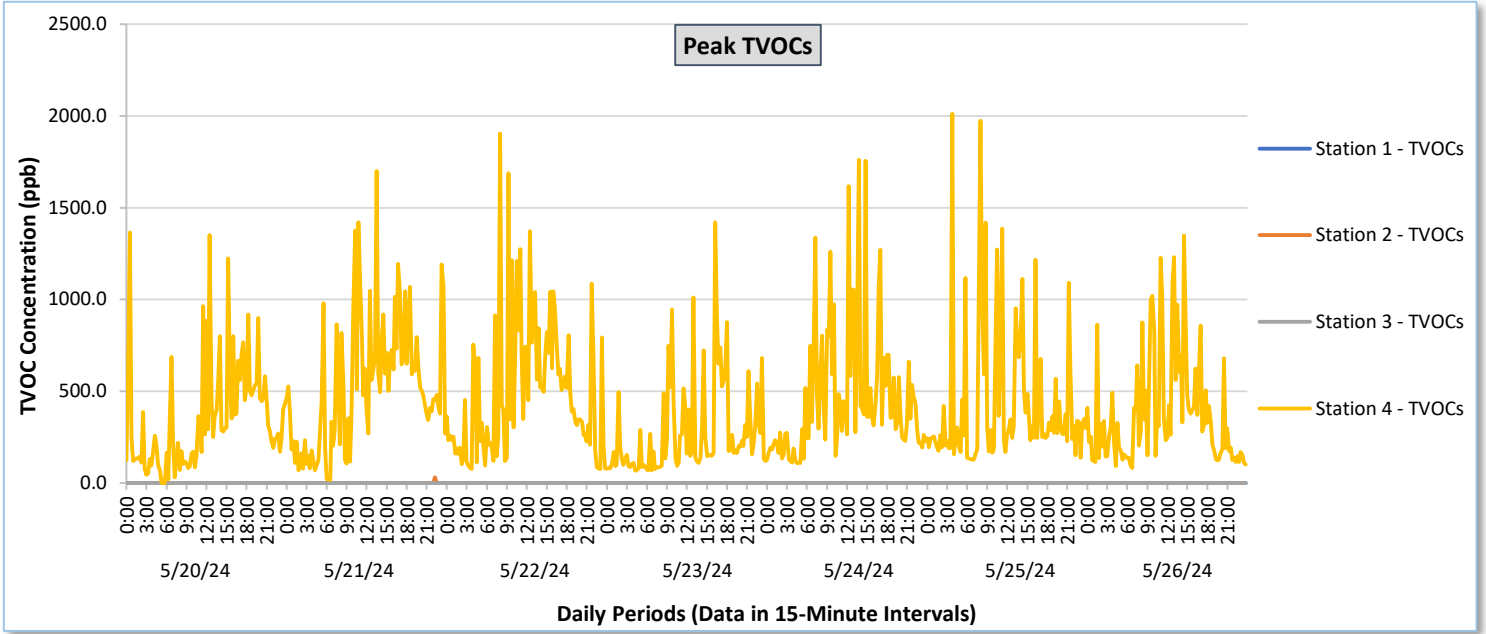




Perimeter Air Monitoring Weekly Report

Real-Time Multigas Monitoring
Bristol Landfill Air Investigation

May 20 - May 26, 2024

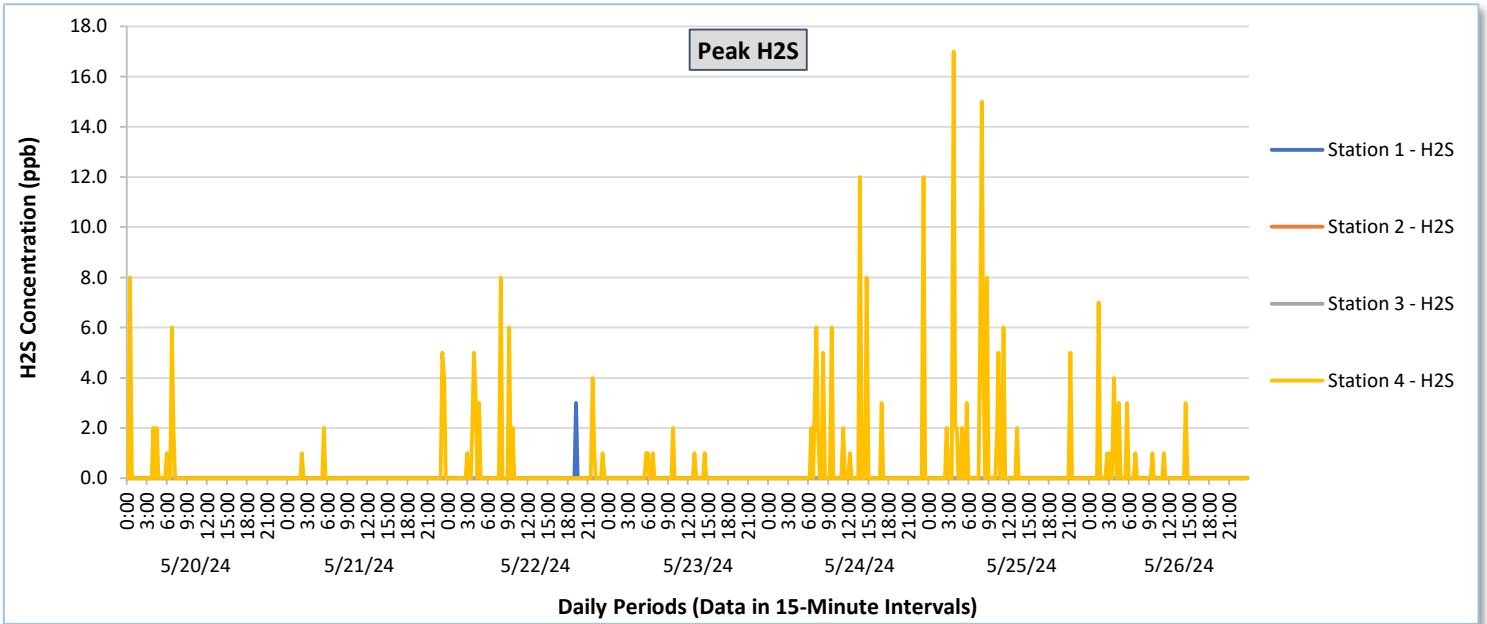
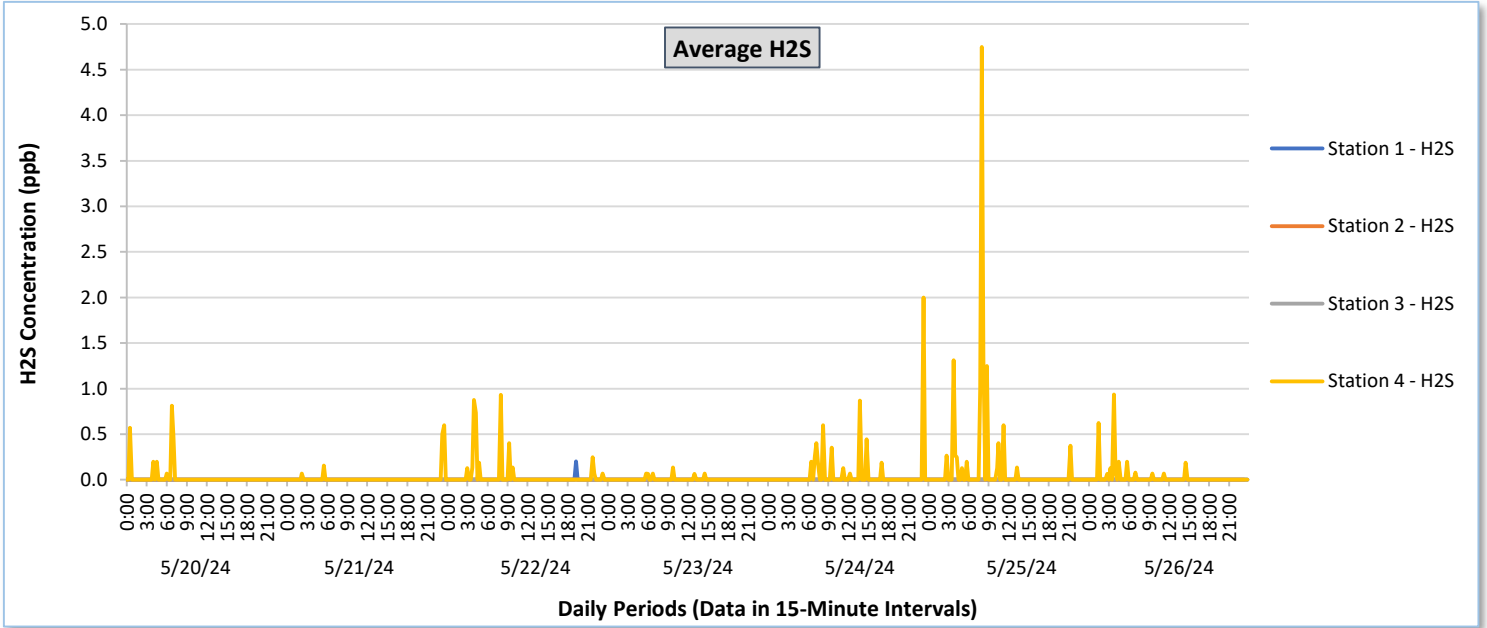




Perimeter Air Monitoring Weekly Report

Real-Time Multigas Monitoring
Bristol Landfill Air Investigation

May 20 - May 26, 2024





Perimeter Air Monitoring Weekly Report

Real-Time Multigas Monitoring
 Bristol Landfill Air Investigation
 May 20 - May 26, 2024

Date	Daily Statistics	Station 1						Station 2						Station 3						Station 4					
		TVOCs		H2S		Benzene		TVOCs		H2S		Benzene		TVOCs		H2S		Benzene		TVOCs		H2S		Benzene	
		Average ppb	Peak ppb	Average ppb	Peak ppb	Average ppb	Peak ppb	Average ppb	Peak ppb	Average ppb	Peak ppb	Average ppb	Peak ppb	Average ppb	Peak ppb	Average ppb	Peak ppb	Average ppb	Peak ppb	Average ppb	Peak ppb	Average ppb	Peak ppb	Average ppb	Peak ppb
May 20, 2024	Minimum	0.0	0.0	0.0	0.0	-	-	0.0	0.0	0.0	0.0	-	-	0.0	0.0	0.0	0.0	-	-	0.0	0.0	0.0	0.0	0.0	0.0
	Maximum	0.0	0.0	0.0	0.0	-	-	0.0	0.0	0.0	0.0	-	-	0.0	0.0	0.0	0.0	-	-	516.1	1,365.0	0.8	8.0	1.5	16.0
	Average	0.0	0.0	0.0	0.0	-	-	0.0	0.0	0.0	0.0	-	-	0.0	0.0	0.0	0.0	-	-	215.6	349.4	0.0	0.2	0.0	0.3
May 21, 2024	Minimum	0.0	0.0	0.0	0.0	-	-	0.0	0.0	0.0	0.0	-	-	0.0	0.0	0.0	0.0	-	-	12.5	16.0	0.0	0.0	0.0	0.0
	Maximum	0.0	0.0	0.0	0.0	-	-	3.2	32.0	0.0	0.0	-	-	0.0	0.0	0.0	0.0	-	-	713.4	1,699.0	0.6	5.0	3.8	17.0
	Average	0.0	0.0	0.0	0.0	-	-	0.0	0.3	0.0	0.0	-	-	0.0	0.0	0.0	0.0	-	-	300.4	522.1	0.0	0.1	0.1	0.8
May 22, 2024	Minimum	0.0	0.0	0.0	0.0	-	-	0.0	0.0	0.0	0.0	-	-	0.0	0.0	0.0	0.0	-	-	58.2	77.0	0.0	0.0	0.0	0.0
	Maximum	0.0	0.0	0.2	3.0	-	-	0.0	0.0	0.0	0.0	-	-	0.0	0.0	0.0	0.0	-	-	612.4	1,903.0	0.9	8.0	3.5	23.0
	Average	0.0	0.0	0.0	0.0	-	-	0.0	0.0	0.0	0.0	-	-	0.0	0.0	0.0	0.0	-	-	270.9	494.4	0.0	0.4	0.3	1.7
May 23, 2024	Minimum	0.0	0.0	0.0	0.0	-	-	0.0	0.0	0.0	0.0	-	-	0.0	0.0	0.0	0.0	-	-	63.9	69.0	0.0	0.0	0.0	0.0
	Maximum	0.0	0.0	0.0	0.0	-	-	0.0	0.0	0.0	0.0	-	-	0.0	0.0	0.0	0.0	-	-	473.5	1,420.0	0.1	2.0	2.7	14.0
	Average	0.0	0.0	0.0	0.0	-	-	0.0	0.0	0.0	0.0	-	-	0.0	0.0	0.0	0.0	-	-	146.3	276.2	0.0	0.1	0.2	1.2
May 24, 2024	Minimum	0.0	0.0	0.0	0.0	-	-	0.0	0.0	0.0	0.0	-	-	0.0	0.0	0.0	0.0	-	-	106.7	109.0	0.0	0.0	0.0	0.0
	Maximum	0.0	0.0	0.0	0.0	-	-	0.0	0.0	0.0	0.0	-	-	0.0	0.0	0.0	0.0	-	-	543.1	1,760.0	2.0	12.0	2.7	23.0
	Average	0.0	0.0	0.0	0.0	-	-	0.0	0.0	0.0	0.0	-	-	0.0	0.0	0.0	0.0	-	-	239.9	461.7	0.1	0.6	0.5	3.0
May 25, 2024	Minimum	0.0	0.0	0.0	0.0	-	-	0.0	0.0	0.0	0.0	-	-	0.0	0.0	0.0	0.0	-	-	122.6	127.0	0.0	0.0	0.0	0.0
	Maximum	0.0	0.0	0.0	0.0	-	-	0.0	0.0	0.0	0.0	-	-	0.0	0.0	0.0	0.0	-	-	758.7	2,011.0	4.8	17.0	8.6	30.0
	Average	0.0	0.0	0.0	0.0	-	-	0.0	0.0	0.0	0.0	-	-	0.0	0.0	0.0	0.0	-	-	233.2	431.9	0.1	0.8	1.6	4.8
May 26, 2024	Minimum	0.0	0.0	0.0	0.0	-	-	0.0	0.0	0.0	0.0	-	-	0.0	0.0	0.0	0.0	-	-	78.5	82.0	0.0	0.0	0.0	0.0
	Maximum	0.0	0.0	0.0	0.0	-	-	0.0	0.0	0.0	0.0	-	-	0.0	0.0	0.0	0.0	-	-	487.5	1,348.0	0.9	7.0	8.9	15.0
	Average	0.0	0.0	0.0	0.0	-	-	0.0	0.0	0.0	0.0	-	-	0.0	0.0	0.0	0.0	-	-	207.9	378.4	0.0	0.3	1.1	2.6

Notes:

- Data records with a dash indicate TVOC levels were below 160 ppb, thus Benzene levels were not being measured or no data is available for that interval
- Calibration readings and data produced during sensor errors are excluded from the report
- As discussed with the manufacturer of the H2S sensor, there is high likelihood that the H2S sensor has cross sensitivity with other sulfur compounds. Other sulfur compounds include, but are not limited to, carbonyl sulfide, dimethyl sulfide, dimethyl disulfide, and methyl mercaptan.



Perimeter Air Monitoring Weekly Report

Real-Time Multigas Monitoring
Bristol Landfill Air Investigation

May 20 - May 26, 2024

Date	Daily Statistics	Bristol Met Station				
		Wind Dir degrees	Wind Speed mph	Temp °F	Rel Humidity %	Baro mbar
May 20, 2024	Minimum		1.0	57.3	32.9	948.6
	Maximum		7.0	84.8	95.3	951.9
	Average	179.7	1.5	70.3	68.4	950.3
May 21, 2024	Minimum		1.0	59.8	37.3	948.7
	Maximum		8.0	84.0	91.1	952.0
	Average	154.3	1.8	72.1	67.9	950.3
May 22, 2024	Minimum		1.0	61.9	58.7	948.8
	Maximum		9.0	80.8	92.5	952.6
	Average	186.1	1.8	71.8	75.9	950.7
May 23, 2024	Minimum		1.0	62.5	70.6	948.9
	Maximum		14.0	75.2	96.5	953.2
	Average	194.2	1.5	66.8	88.4	950.7
May 24, 2024	Minimum		1.0	62.8	57.8	947.1
	Maximum		9.0	78.3	96.9	949.9
	Average	215.8	1.4	68.3	82.9	948.7
May 25, 2024	Minimum		1.0	62.3	69.3	946.7
	Maximum		13.0	75.3	96.0	949.0
	Average	173.9	1.8	68.1	84.8	947.9
May 26, 2024	Minimum		1.0	59.7	56.0	944.7
	Maximum		12.0	81.1	96.6	950.5
	Average	150.7	1.9	67.5	83.9	947.6

Notes:

- Dash/Blank data records indicate no data is available for that interval
- Wind direction is a daily (24-hr) average value; with the origin of wind in degrees; clockwise from North calculated with vector averaging