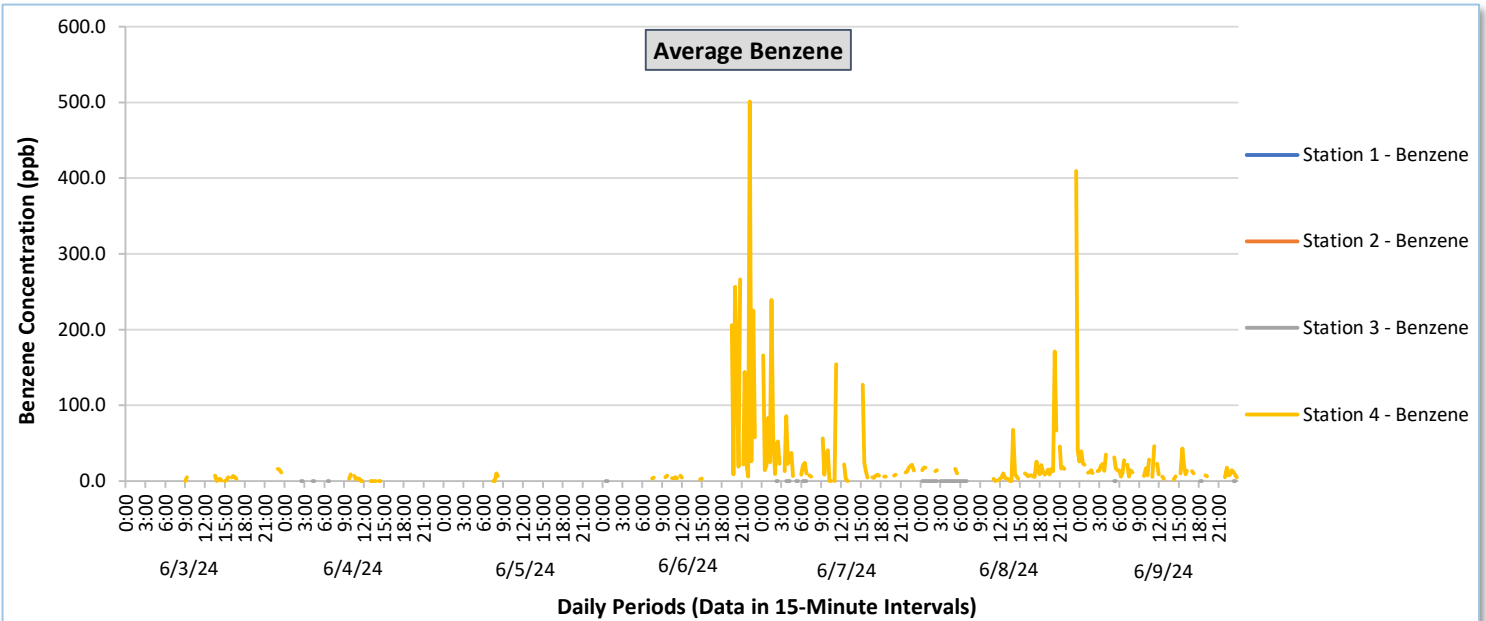
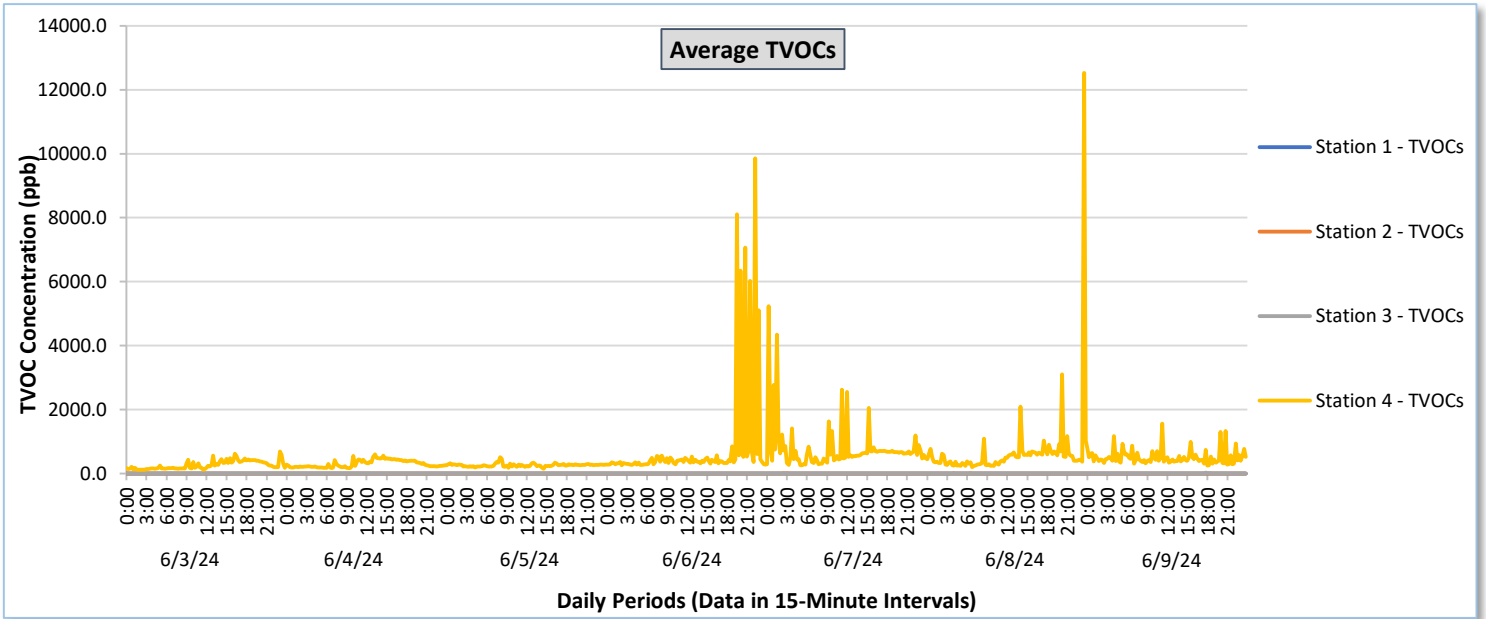




Perimeter Air Monitoring Weekly Report

Real-Time Multigas Monitoring
Bristol Landfill Air Investigation

June 3 - June 9, 2024

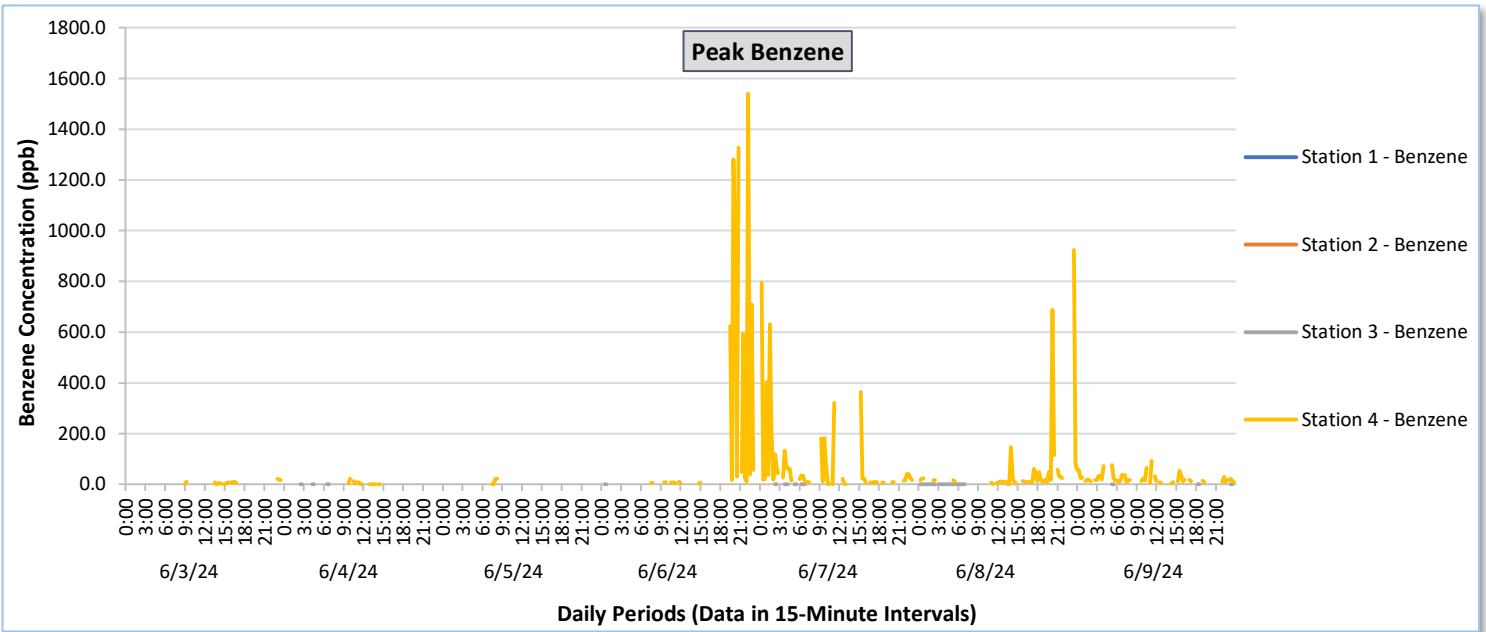
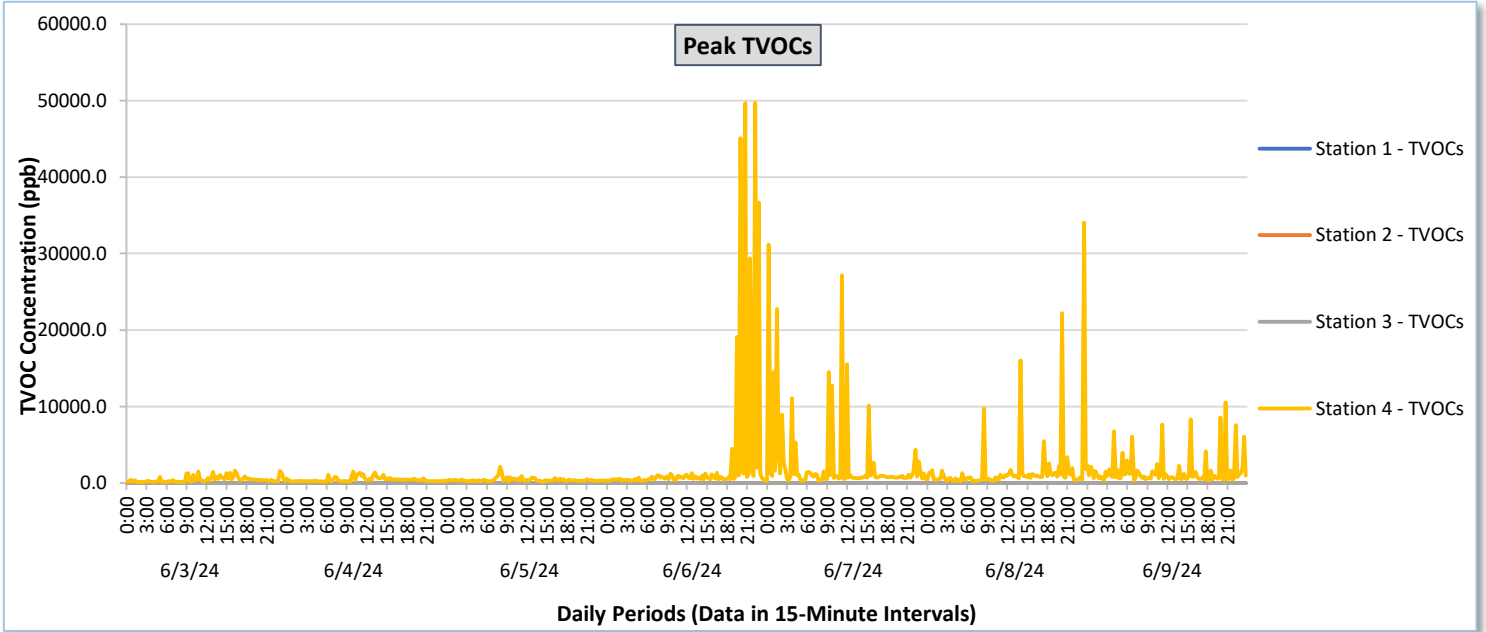




Perimeter Air Monitoring Weekly Report

Real-Time Multigas Monitoring
Bristol Landfill Air Investigation

June 3 - June 9, 2024

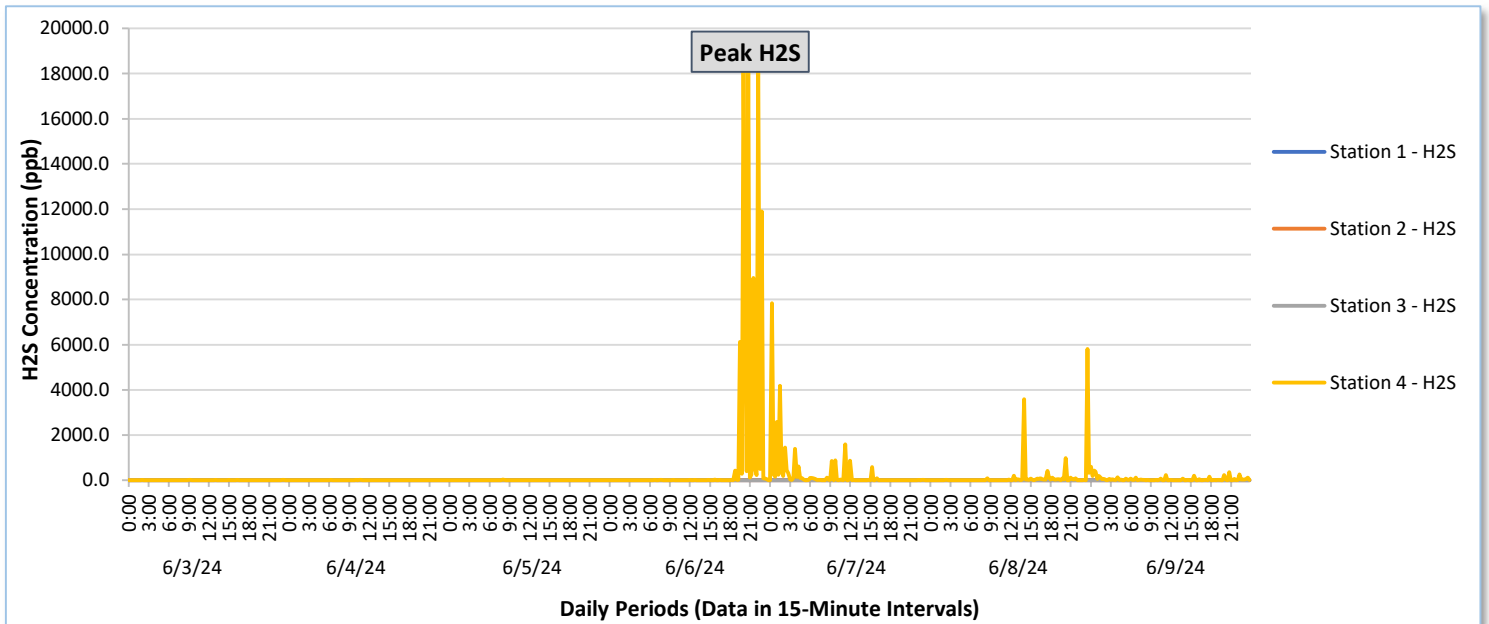
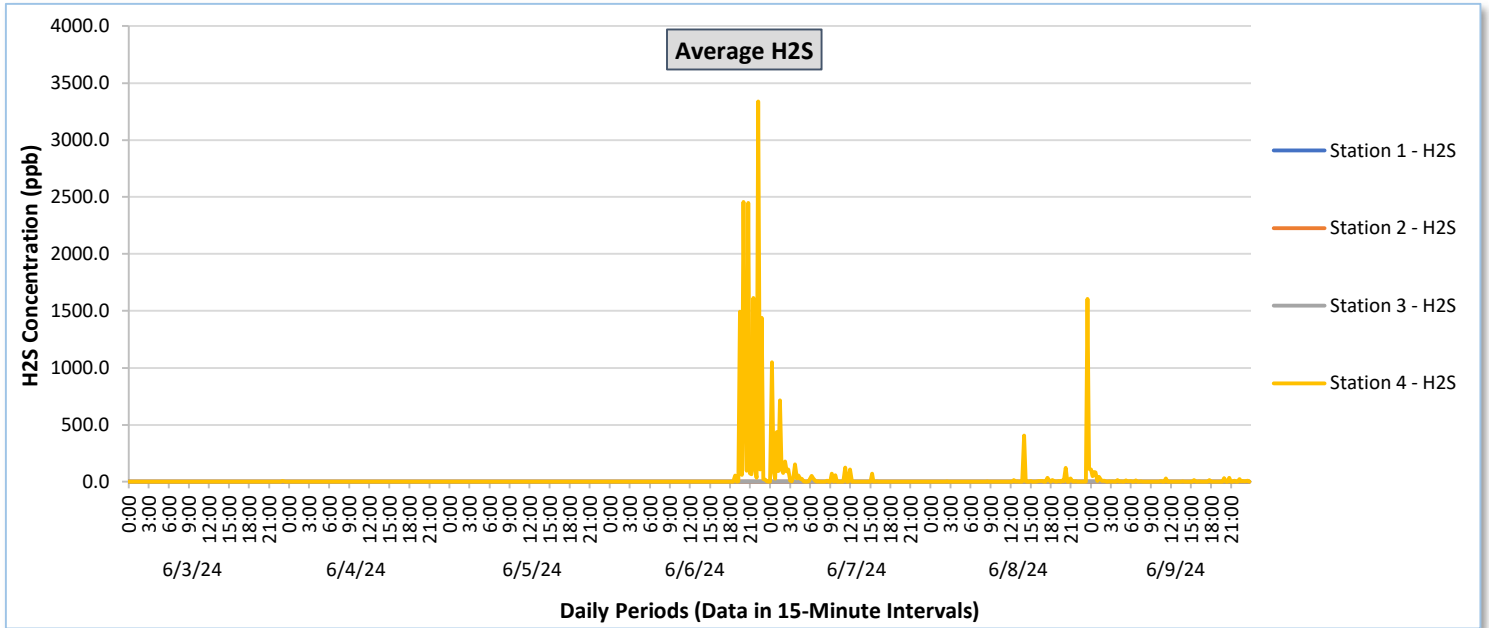




Perimeter Air Monitoring Weekly Report

Real-Time Multigas Monitoring
Bristol Landfill Air Investigation

June 3 - June 9, 2024





Perimeter Air Monitoring Weekly Report

Real-Time Multigas Monitoring
Bristol Landfill Air Investigation
June 3 - June 9, 2024

Date	Daily Statistics	Station 1						Station 2						Station 3						Station 4					
		TVOCs		H2S		Benzene		TVOCs		H2S		Benzene		TVOCs		H2S		Benzene		TVOCs		H2S		Benzene	
		Average ppb	Peak ppb	Average ppb	Peak ppb	Average ppb	Peak ppb	Average ppb	Peak ppb	Average ppb	Peak ppb	Average ppb	Peak ppb	Average ppb	Peak ppb	Average ppb	Peak ppb	Average ppb	Peak ppb	Average ppb	Peak ppb	Average ppb	Peak ppb	Average ppb	Peak ppb
June 3, 2024	Minimum	0.0	0.0	0.0	0.0	-	-	0.0	0.0	0.0	0.0	-	-	0.0	0.0	0.0	0.0	-	-	117.6	120.0	0.0	0.0	0.0	0.0
	Maximum	0.0	0.0	0.0	0.0	-	-	0.0	0.0	0.0	0.0	-	-	0.0	0.0	0.0	0.0	-	-	689.6	1,629.0	5.5	17.0	16.2	21.0
	Average	0.0	0.0	0.0	0.0	-	-	0.0	0.0	0.0	0.0	-	-	0.0	0.0	0.0	0.0	-	-	270.3	466.9	0.2	1.0	4.4	6.6
June 4, 2024	Minimum	0.0	0.0	0.0	0.0	-	-	0.0	0.0	0.0	0.0	-	-	0.0	0.0	0.0	0.0	-	-	169.4	183.0	0.0	0.0	0.0	0.0
	Maximum	0.0	0.0	0.1	2.0	-	-	0.0	0.0	0.0	0.0	-	-	0.0	0.0	0.0	0.0	-	-	601.7	1,526.0	2.0	14.0	9.0	22.0
	Average	0.0	0.0	0.0	0.0	-	-	0.0	0.0	0.0	0.0	-	-	0.0	0.0	0.0	0.0	-	-	310.5	442.6	0.1	0.6	2.3	4.2
June 5, 2024	Minimum	0.0	0.0	0.0	0.0	-	-	0.0	0.0	0.0	0.0	-	-	0.0	0.0	0.0	0.0	-	-	155.4	175.0	0.0	0.0	0.0	0.0
	Maximum	0.0	0.0	0.7	2.0	-	-	0.0	0.0	0.0	0.0	-	-	0.0	0.0	0.5	3.0	-	-	510.1	2,148.0	2.3	19.0	10.0	23.0
	Average	0.0	0.0	0.0	0.0	-	-	0.0	0.0	0.0	0.0	-	-	0.0	0.0	0.0	0.1	-	-	263.8	399.0	0.1	0.6	2.2	5.8
June 6, 2024	Minimum	0.0	0.0	0.0	0.0	-	-	0.0	0.0	0.0	0.0	-	-	0.0	0.0	0.0	0.0	-	-	262.6	268.0	0.0	0.0	1.5	2.0
	Maximum	0.0	0.0	0.0	0.0	-	-	0.0	0.0	0.0	0.0	-	-	0.0	0.0	0.7	4.0	-	-	9,850.4	49,686.0	3,337.1	18,633.0	501.0	1,539.0
	Average	0.0	0.0	0.0	0.0	-	-	0.0	0.0	0.0	0.0	-	-	0.0	0.0	0.0	0.0	-	-	828.4	3,258.5	147.2	974.2	55.1	200.6
June 7, 2024	Minimum	0.0	0.0	0.0	0.0	-	-	0.0	0.0	0.0	0.0	-	-	0.0	0.0	0.0	0.0	-	-	261.7	289.0	0.0	0.0	0.0	0.0
	Maximum	0.0	0.0	0.0	0.0	-	-	1.2	10.0	0.0	0.0	-	-	0.0	0.0	0.1	2.0	-	-	5,238.0	31,183.0	1,049.7	7,837.0	239.3	796.0
	Average	0.0	0.0	0.0	0.0	-	-	0.0	0.1	0.0	0.0	-	-	0.0	0.0	0.0	0.0	-	-	777.3	2,676.9	40.7	272.4	31.3	80.6
June 8, 2024	Minimum	0.0	0.0	0.0	0.0	-	-	0.0	0.0	0.0	0.0	-	-	0.0	0.0	0.0	0.0	-	-	199.7	236.0	0.0	0.0	0.0	0.0
	Maximum	0.0	0.0	0.0	0.0	-	-	2.4	19.0	0.0	0.0	-	-	0.0	0.0	0.0	0.0	-	-	12,524.8	34,049.0	1,606.1	5,814.0	409.6	924.0
	Average	0.0	0.0	0.0	0.0	-	-	0.0	0.3	0.0	0.0	-	-	0.0	0.0	0.0	0.0	-	-	657.2	1,709.2	25.7	133.5	25.6	55.4
June 9, 2024	Minimum	0.0	0.0	0.0	0.0	-	-	0.0	0.0	0.0	0.0	-	-	0.0	0.0	0.0	0.0	0.0	0.0	247.7	324.0	0.0	0.0	2.0	4.0
	Maximum	0.0	0.0	0.0	0.0	-	-	0.0	0.0	0.0	0.0	-	-	25.9	208.0	0.0	0.0	0.0	0.0	1,564.1	10,560.0	107.9	600.0	92.0	215.0
	Average	0.0	0.0	0.0	0.0	-	-	0.0	0.0	0.0	0.0	-	-	0.3	2.4	0.0	0.0	0.0	0.0	509.1	1,580.2	7.5	50.6	17.3	27.6

Notes:

- Data records with a dash indicate TVOC levels were below 160 ppb, thus Benzene levels were not being measured or no data is available for that interval
- Calibration readings and data produced during sensor errors are excluded from the report
- As discussed with the manufacturer of the H2S sensor, there is high likelihood that the H2S sensor has cross sensitivity with other sulfur compounds. Other sulfur compounds include, but are not limited to, carbonyl sulfide, dimethyl sulfide, dimethyl disulfide, and methyl mercaptan.



Perimeter Air Monitoring Weekly Report

Real-Time Multigas Monitoring
Bristol Landfill Air Investigation

June 3 - June 9, 2024

Date	Daily Statistics	Bristol Met Station				
		Wind Dir degrees	Wind Speed mph	Temp °F	Rel Humidity %	Baro mbar
June 3, 2024	Minimum		1.0	62.8	50.8	947.3
	Maximum		9.0	80.5	96.2	951.8
	Average	181.3	1.6	70.2	78.8	949.7
June 4, 2024	Minimum		1.0	61.2	44.7	946.1
	Maximum		13.0	85.1	93.5	950.1
	Average	129.8	1.9	72.1	73.4	948.0
June 5, 2024	Minimum		1.0	65.6	62.4	943.8
	Maximum		15.0	80.3	95.0	947.3
	Average	194.1	1.7	72.1	83.7	945.7
June 6, 2024	Minimum		1.0	65.5	73.2	941.3
	Maximum		13.0	75.7	95.6	944.7
	Average	222.6	2.4	69.5	88.4	943.2
June 7, 2024	Minimum		1.0	60.5	37.0	943.4
	Maximum		15.0	77.6	96.5	948.3
	Average	235.4	2.6	69.2	66.0	945.1
June 8, 2024	Minimum		1.0	51.9	40.7	947.2
	Maximum		9.0	80.1	92.4	950.8
	Average	184.7	1.6	67.1	65.7	948.7
June 9, 2024	Minimum		1.0	60.5	65.1	943.0
	Maximum		14.0	77.3	95.2	947.4
	Average	229.9	2.2	67.9	79.2	945.5

Notes:

- Dash/Blank data records indicate no data is available for that interval
- Wind direction is a daily (24-hr) average value; with the origin of wind in degrees; clockwise from North calculated with vector averaging