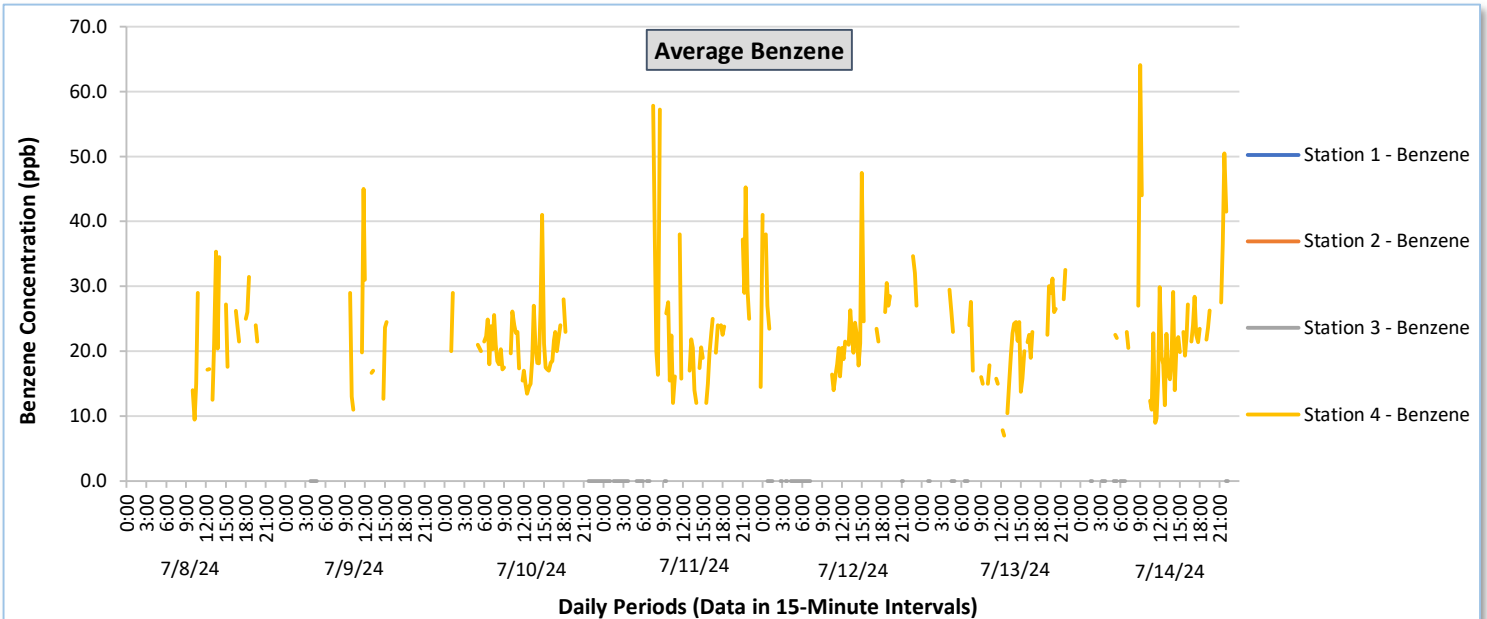
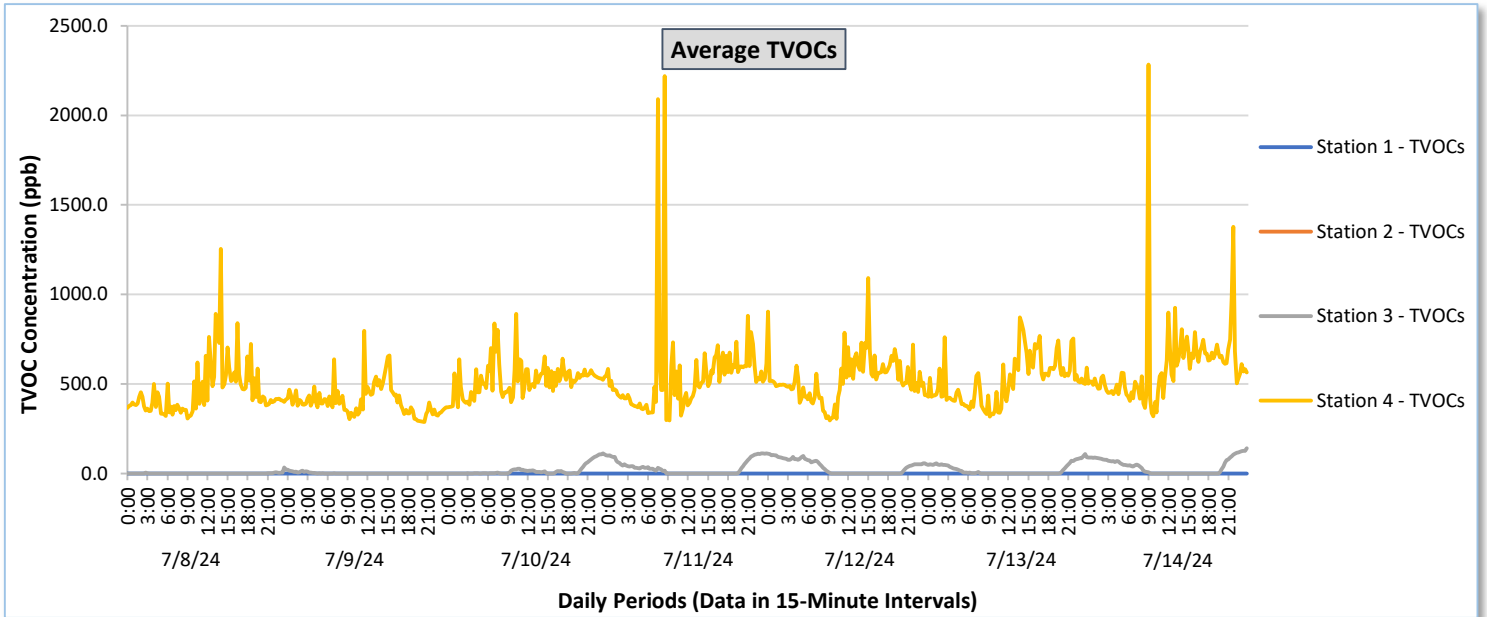




Perimeter Air Monitoring Weekly Report

Real-Time Multigas Monitoring
Bristol Landfill Air Investigation

July 8 - July 14, 2024

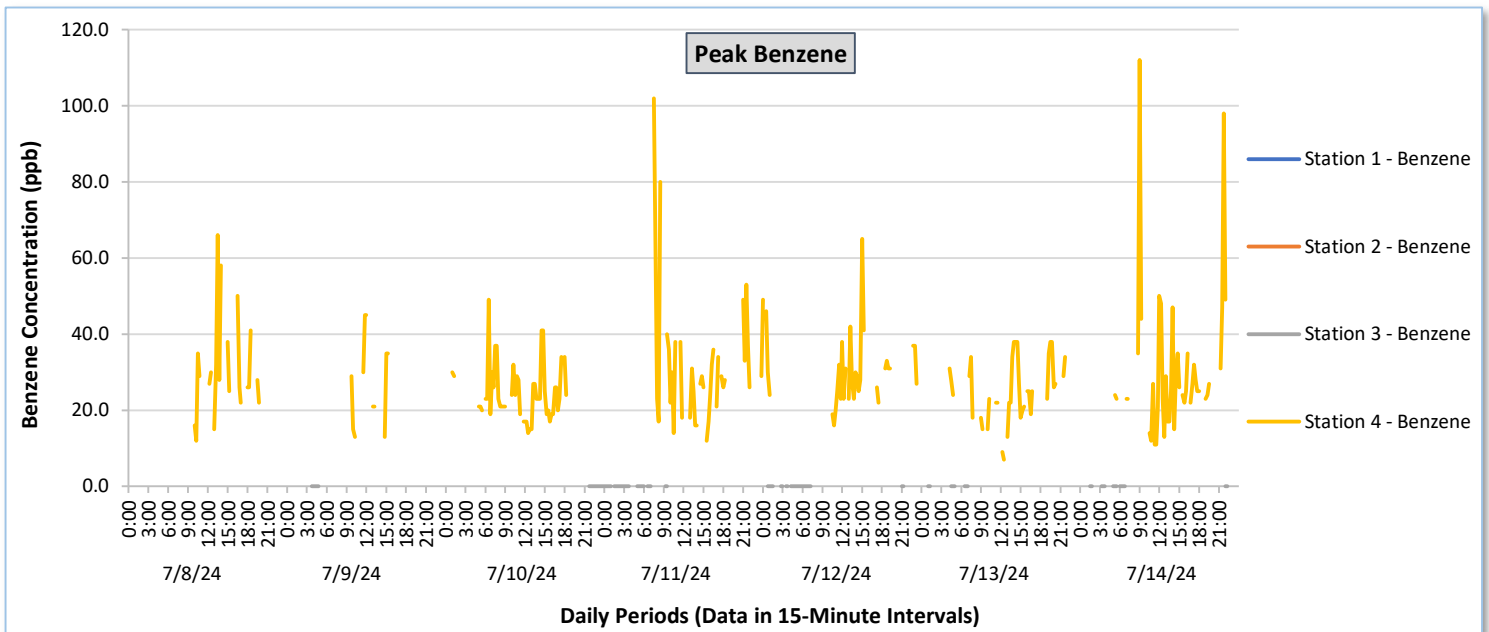
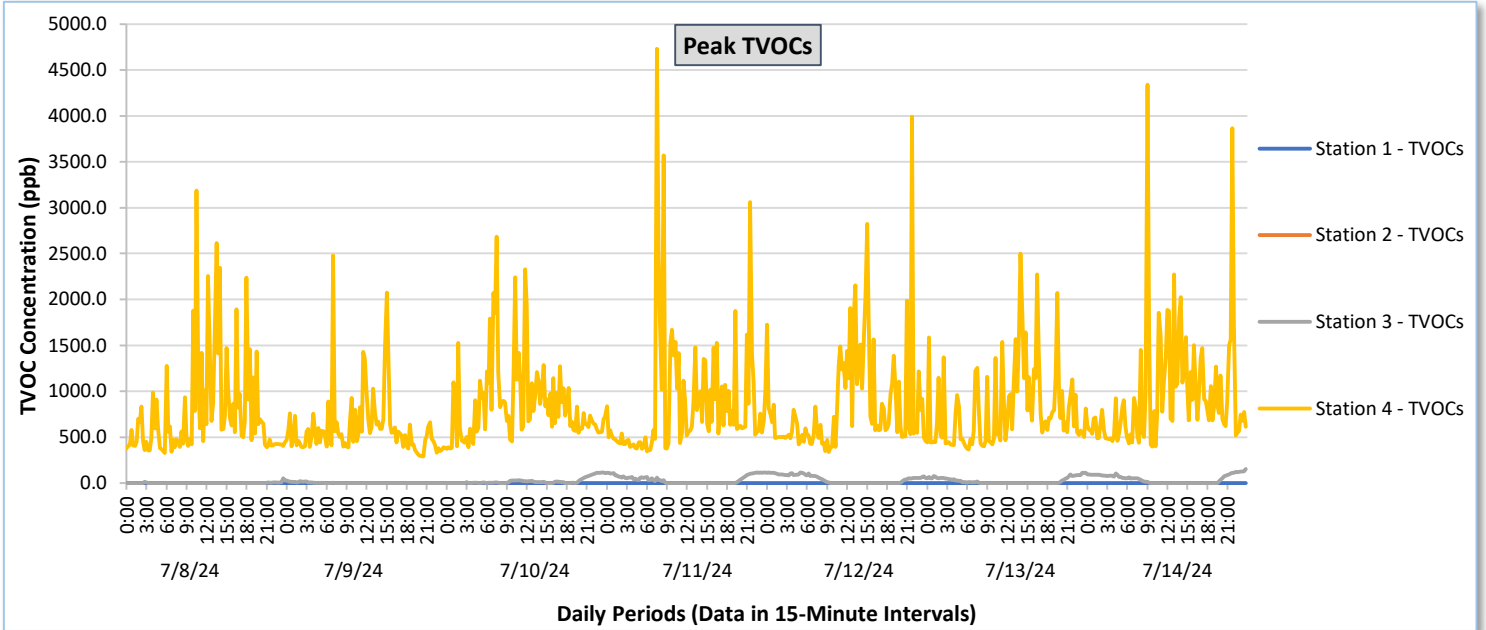




Perimeter Air Monitoring Weekly Report

Real-Time Multigas Monitoring
Bristol Landfill Air Investigation

July 8 - July 14, 2024

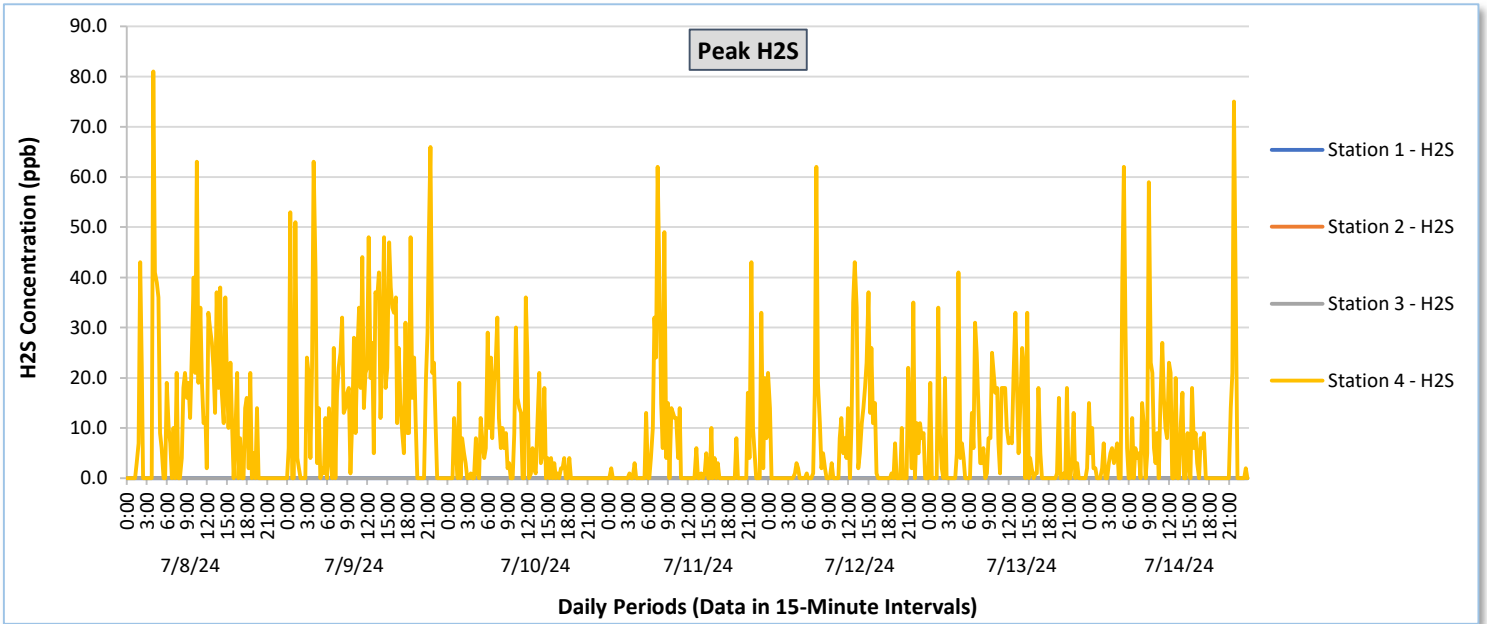
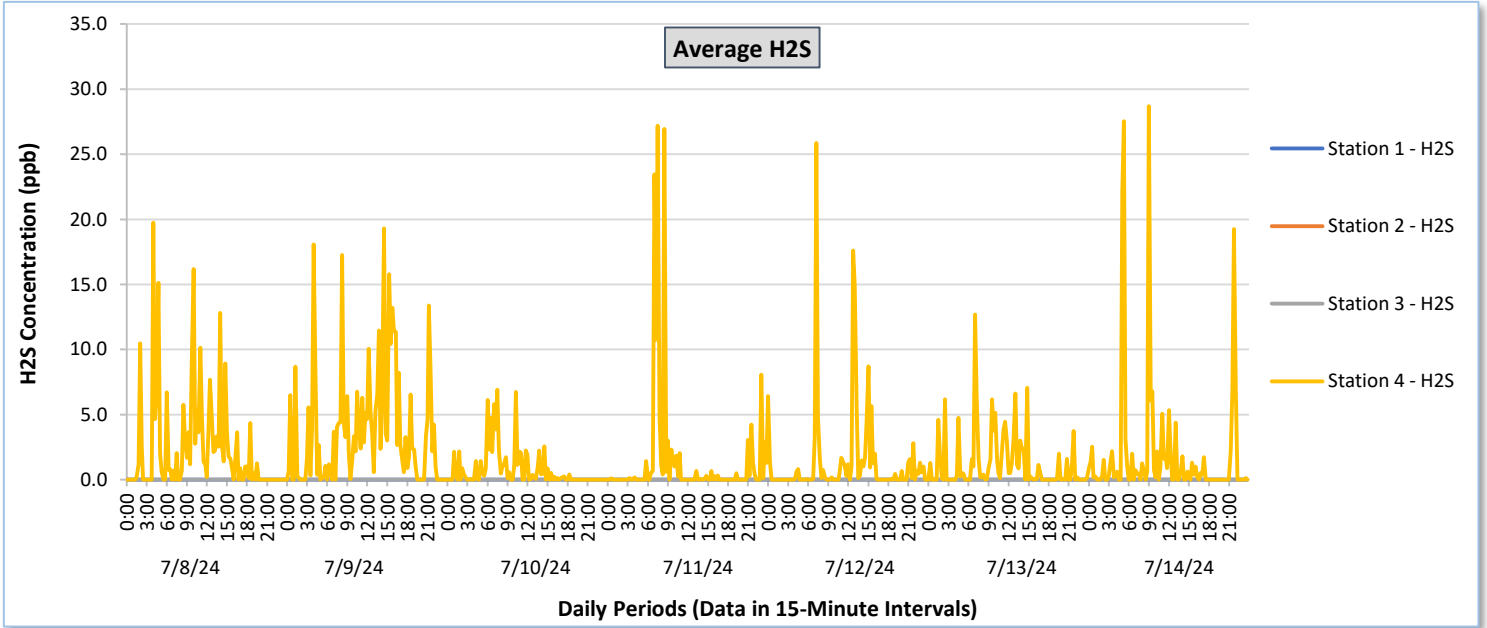




Perimeter Air Monitoring Weekly Report

Real-Time Multigas Monitoring
Bristol Landfill Air Investigation

July 8 - July 14, 2024





Perimeter Air Monitoring Weekly Report

Real-Time Multigas Monitoring
Bristol Landfill Air Investigation
July 8 - July 14, 2024

Date	Daily Statistics	Station 1						Station 2						Station 3						Station 4					
		TVOCs		H2S		Benzene		TVOCs		H2S		Benzene		TVOCs		H2S		Benzene		TVOCs		H2S		Benzene	
		Average ppb	Peak ppb	Average ppb	Peak ppb	Average ppb	Peak ppb	Average ppb	Peak ppb	Average ppb	Peak ppb	Average ppb	Peak ppb	Average ppb	Peak ppb	Average ppb	Peak ppb	Average ppb	Peak ppb	Average ppb	Peak ppb	Average ppb	Peak ppb	Average ppb	Peak ppb
July 8, 2024	Minimum	0.0	0.0	0.0	0.0	-	-	-	-	-	-	-	-	0.0	0.0	0.0	0.0	-	-	306.6	327.0	0.0	0.0	9.5	12.0
	Maximum	0.0	0.0	0.0	0.0	-	-	-	-	-	-	-	-	33.5	52.0	0.0	0.0	-	-	1,255.4	3,186.0	19.8	81.0	35.3	66.0
	Average	0.0	0.0	0.0	0.0	-	-	-	-	-	-	-	-	0.9	1.5	0.0	0.0	-	-	462.4	771.3	2.3	11.9	21.4	28.6
July 9, 2024	Minimum	0.0	0.0	0.0	0.0	-	-	-	-	-	-	-	-	0.0	0.0	0.0	0.0	-	-	287.5	289.0	0.0	0.0	11.0	13.0
	Maximum	0.0	0.0	0.0	0.0	-	-	-	-	-	-	-	-	21.6	25.0	0.0	0.0	-	-	796.6	2,478.0	19.3	66.0	45.0	52.0
	Average	0.0	0.0	0.0	0.0	-	-	-	-	-	-	-	-	1.6	2.4	0.0	0.0	-	-	405.4	598.8	3.7	17.8	22.1	27.7
July 10, 2024	Minimum	0.0	0.0	0.0	0.0	-	-	-	-	-	-	-	-	0.0	0.0	0.0	0.0	-	-	368.3	372.0	0.0	0.0	13.5	14.0
	Maximum	0.0	0.0	0.0	0.0	-	-	-	-	-	-	-	-	112.3	116.0	0.0	0.0	-	-	890.4	2,684.0	6.9	36.0	41.0	49.0
	Average	0.0	0.0	0.0	0.0	-	-	-	-	-	-	-	-	18.0	20.5	0.0	0.0	-	-	523.7	870.3	0.8	5.4	21.4	25.2
July 11, 2024	Minimum	0.0	0.0	0.0	0.0	-	-	-	-	-	-	-	-	0.0	0.0	0.0	0.0	-	-	296.5	344.0	0.0	0.0	12.0	12.0
	Maximum	0.0	0.0	0.0	0.0	-	-	-	-	-	-	-	-	112.5	116.0	0.0	0.0	-	-	2,218.1	4,731.0	27.2	62.0	57.8	102.0
	Average	0.0	0.0	0.0	0.0	-	-	-	-	-	-	-	-	31.3	37.4	0.0	0.0	-	-	540.8	871.3	1.4	5.5	24.3	32.2
July 12, 2024	Minimum	0.0	0.0	0.0	0.0	-	-	-	-	-	-	-	-	0.0	0.0	0.0	0.0	-	-	295.5	337.0	0.0	0.0	14.0	16.0
	Maximum	0.0	0.0	0.0	0.0	-	-	-	-	-	-	-	-	110.5	118.0	0.0	0.0	-	-	1,091.3	3,993.0	25.9	62.0	47.5	65.0
	Average	0.0	0.0	0.0	0.0	-	-	-	-	-	-	-	-	36.3	40.4	0.0	0.0	-	-	526.3	864.2	1.4	6.7	25.2	30.8
July 13, 2024	Minimum	0.0	0.0	0.0	0.0	-	-	-	-	-	-	-	-	0.0	0.0	0.0	0.0	-	-	318.2	366.0	0.0	0.0	7.0	7.0
	Maximum	0.0	0.0	0.0	0.0	-	-	-	-	-	-	-	-	107.9	113.0	0.0	0.0	-	-	870.6	2,499.0	12.7	41.0	33.5	40.0
	Average	0.0	0.0	0.0	0.0	-	-	-	-	-	-	-	-	20.2	23.2	0.0	0.0	-	-	518.3	809.4	1.2	7.3	21.9	26.1
July 14, 2024	Minimum	0.0	0.0	0.0	0.0	-	-	-	-	-	-	-	-	0.0	0.0	0.0	0.0	-	-	319.3	396.0	0.0	0.0	9.0	11.0
	Maximum	0.0	0.0	0.0	0.0	-	-	-	-	-	-	-	-	140.7	154.0	0.0	0.0	-	-	2,282.9	4,342.0	28.7	75.0	64.1	112.0
	Average	0.0	0.0	0.0	0.0	-	-	-	-	-	-	-	-	39.0	42.3	0.0	0.0	-	-	595.8	960.0	1.9	8.0	23.8	30.5

Notes:

- Data records with a dash indicate no data is available for that interval.
- Calibration readings and data produced during sensor errors are excluded from the report.
- Station 2 shut down on 6/20/2024 at 11:54 AM due to technical problems and is scheduled for maintenance.
- The CTair monitoring systems at each station are programmed to initiate benzene sampling when a TVOC reading of ≥ 160 ppb is measured. It has been observed that there are occurrences of TVOC readings ≥ 160 ppb where the benzene sampling was not initiated. The affected stations and periods are included in the report table. The equipment manufacturer is actively working to resolve this issue.
- As discussed with the manufacturer of the H2S sensor, there is high likelihood that the H2S sensor has cross sensitivity with other sulfur compounds. Other sulfur compounds include, but are not limited to, carbonyl sulfide, dimethyl sulfide, dimethyl disulfide, and methyl mercaptan.



Perimeter Air Monitoring Weekly Report

Real-Time Multigas Monitoring
Bristol Landfill Air Investigation

July 8 - July 14, 2024

Date	Daily Statistics	Bristol Met Station				
		Wind Dir degrees	Wind Speed mph	Temp °F	Rel Humidity %	Baro mbar
July 8, 2024	Minimum		0.0	67.6	42.6	950.2
	Maximum		9.0	90.7	93.2	953.3
	Average	154.0	1.6	79.4	69.5	951.9
July 9, 2024	Minimum		0.0	70.7	44.2	946.8
	Maximum		10.0	92.9	88.5	952.1
	Average	163.1	2.0	81.7	69.5	949.5
July 10, 2024	Minimum		0.0	67.5	55.7	945.5
	Maximum		16.0	81.4	80.3	951.5
	Average	221.2	3.3	76.3	69.4	948.1
July 11, 2024	Minimum		0.0	59.0	38.0	951.1
	Maximum		9.0	85.9	93.7	953.6
	Average	177.9	1.8	72.6	65.9	952.2
July 12, 2024	Minimum		0.0	62.0	37.1	952.5
	Maximum		8.0	88.4	85.6	955.2
	Average	176.0	1.6	76.9	60.2	953.7
July 13, 2024	Minimum		0.0	67.3	31.5	954.9
	Maximum		11.0	92.7	90.3	957.8
	Average	146.2	1.9	79.2	62.9	956.0
July 14, 2024	Minimum		0.0	64.2	32.3	952.2
	Maximum		14.0	93.5	88.5	956.4
	Average	180.3	2.2	79.3	58.5	954.5

Notes:

- Dash/Blank data records indicate no data is available for that interval.
- Wind direction is a daily (24-hr) average value; with the origin of wind in degrees; clockwise from North calculated with vector averaging.