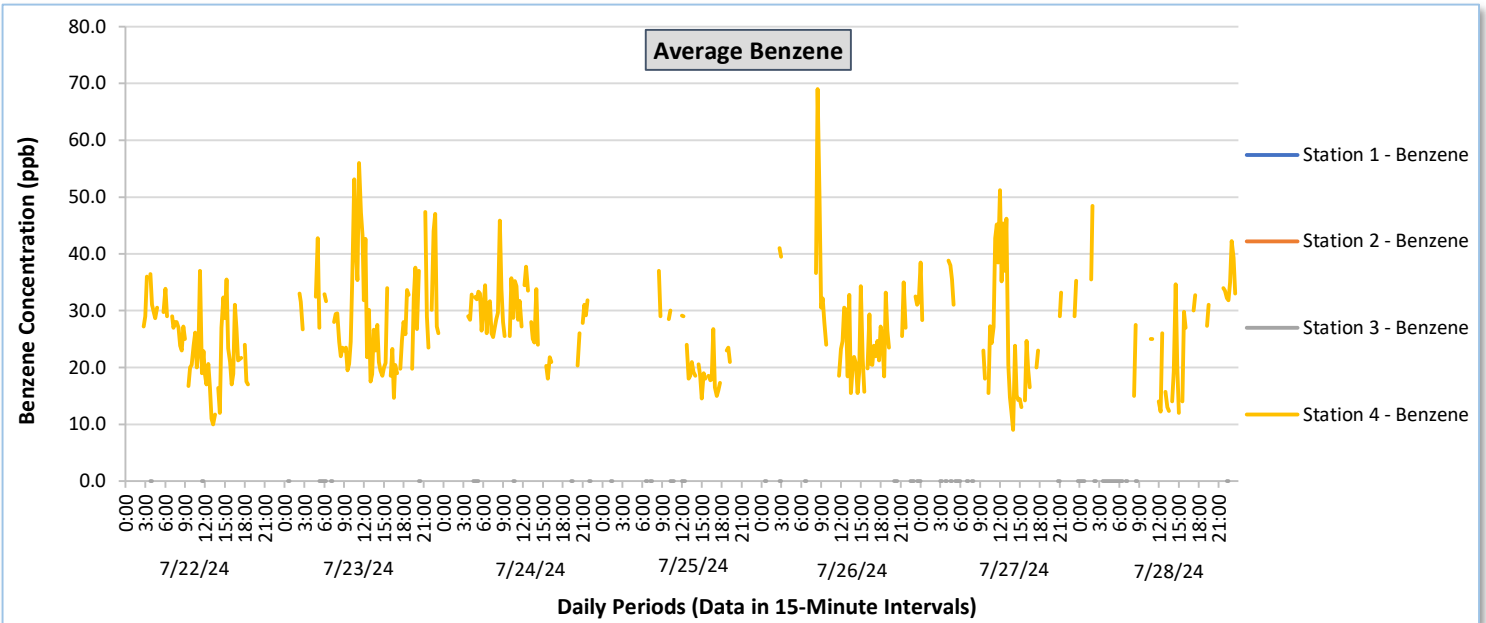
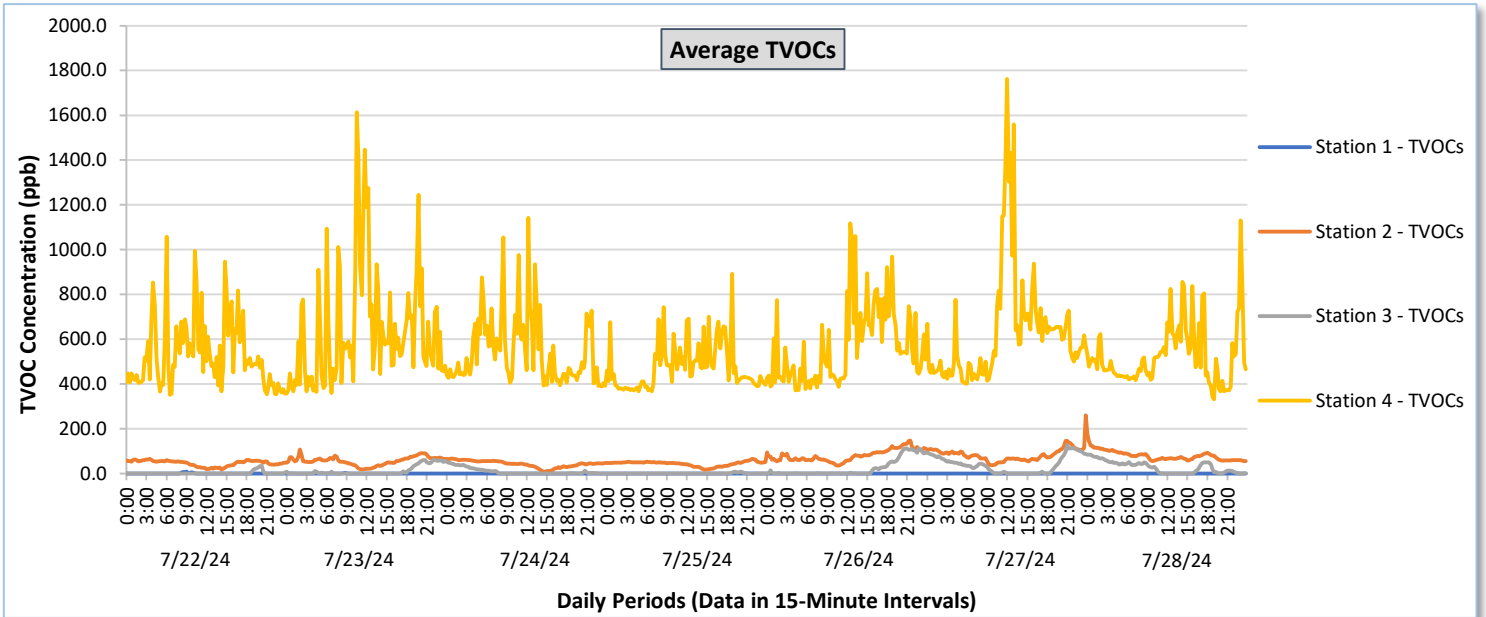




# Perimeter Air Monitoring Weekly Report

Real-Time Multigas Monitoring  
Bristol Landfill Air Investigation

July 22 - July 28, 2024

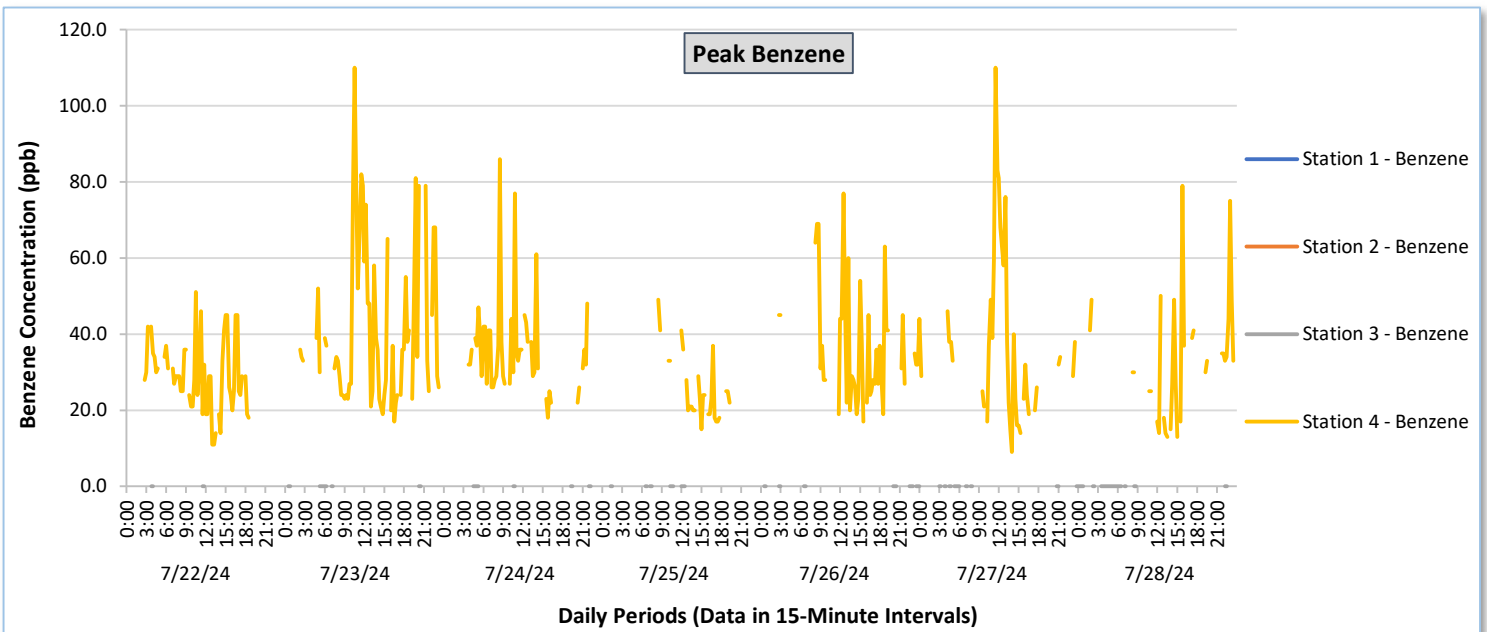
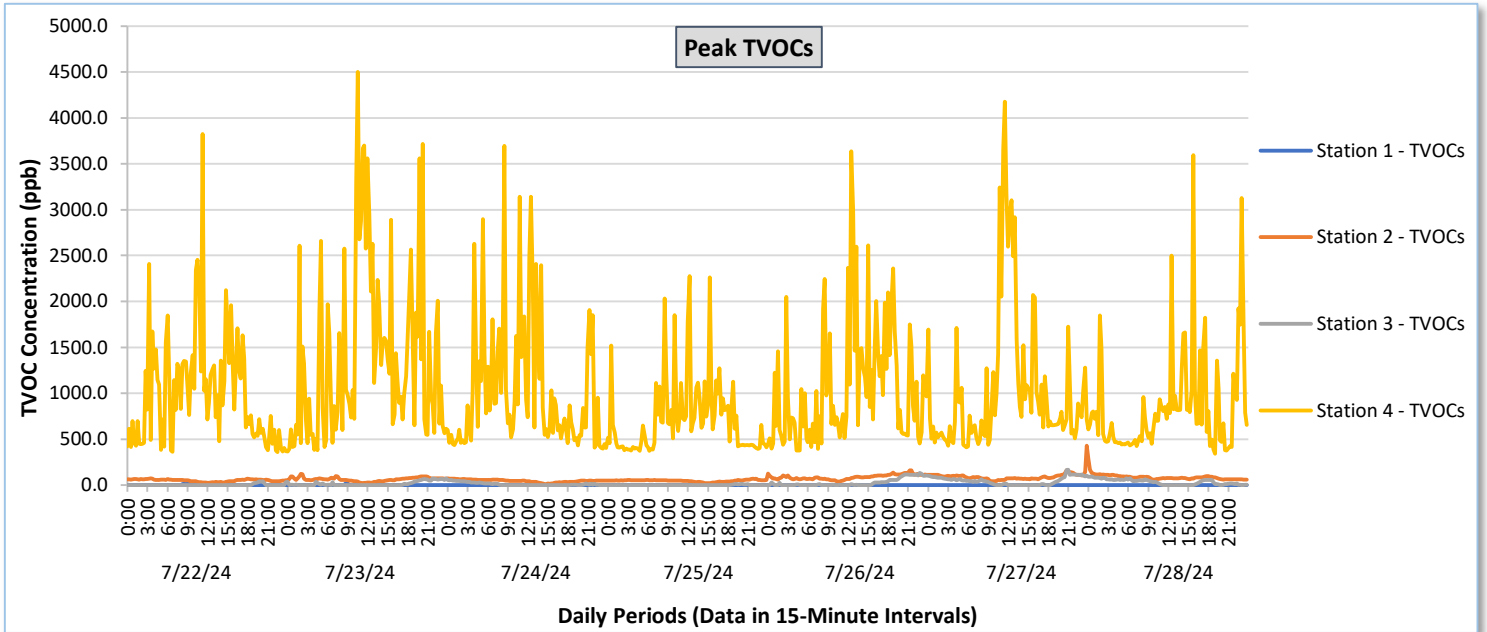




# Perimeter Air Monitoring Weekly Report

Real-Time Multigas Monitoring  
Bristol Landfill Air Investigation

July 22 - July 28, 2024

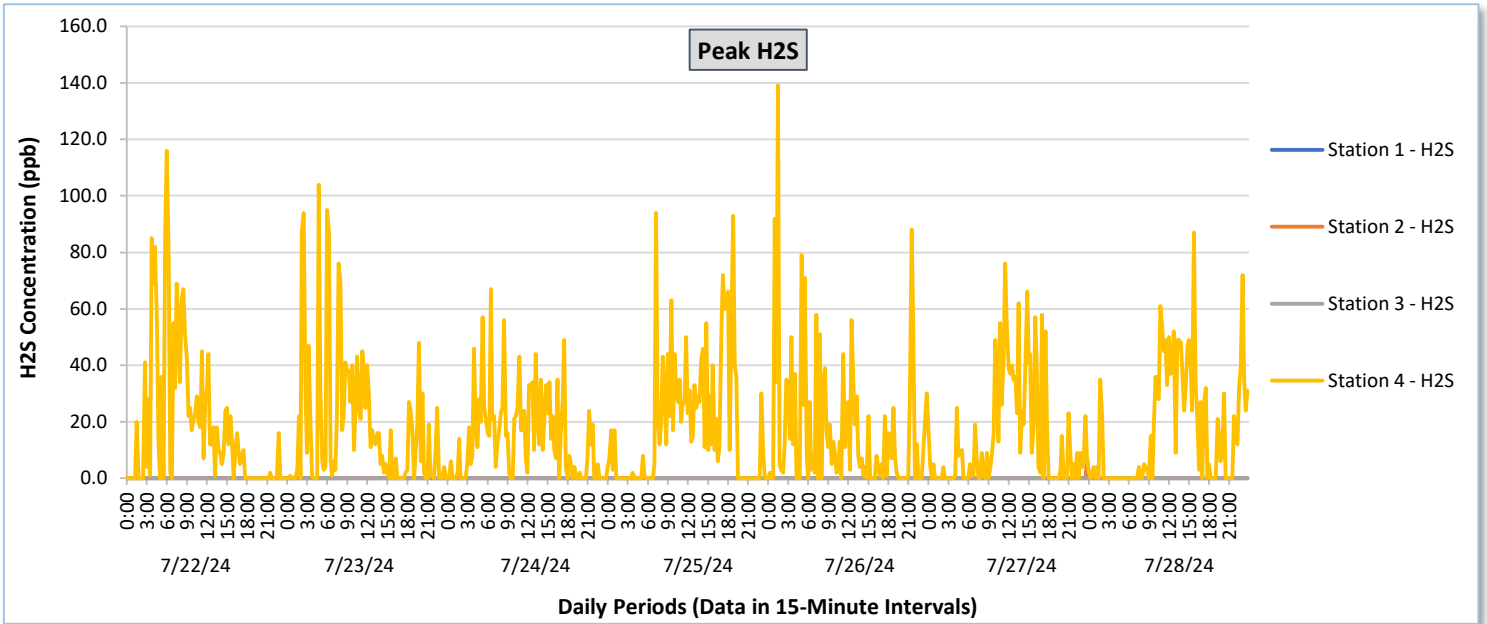
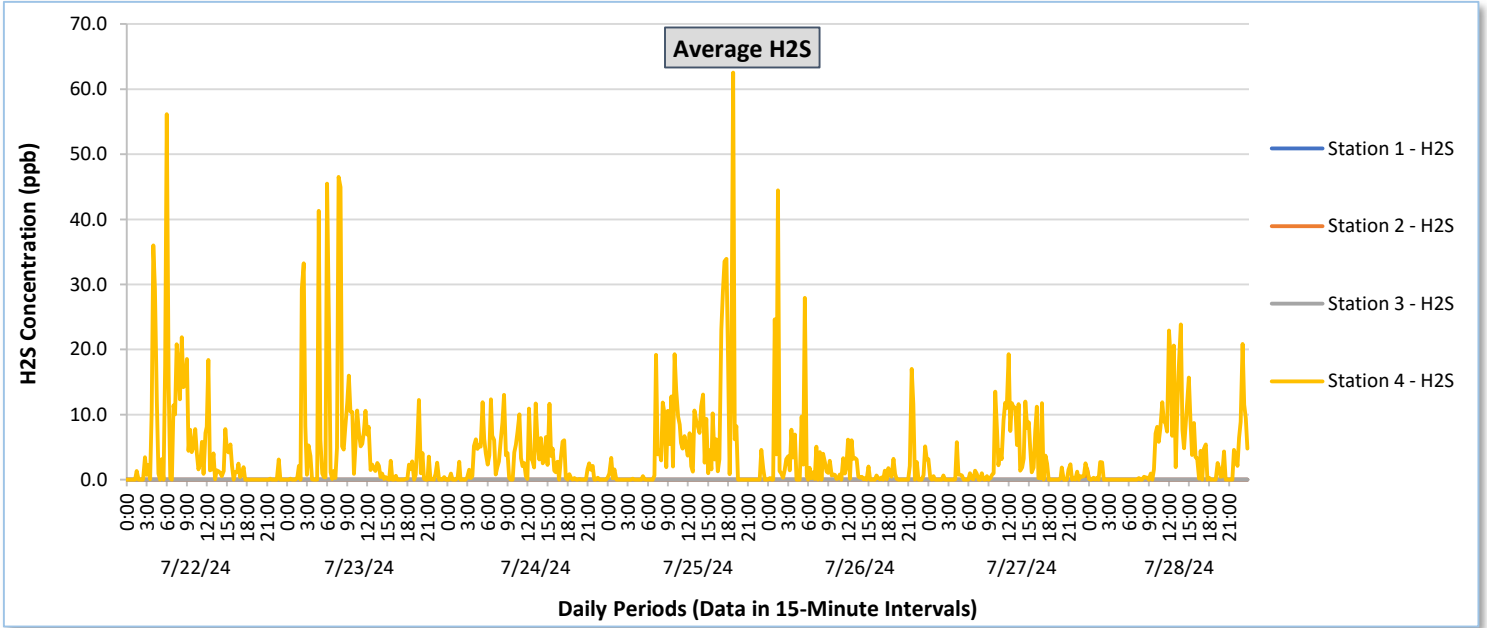




# Perimeter Air Monitoring Weekly Report

Real-Time Multigas Monitoring  
Bristol Landfill Air Investigation

July 22 - July 28, 2024





# Perimeter Air Monitoring Weekly Report

Real-Time Multigas Monitoring  
Bristol Landfill Air Investigation  
July 22 - July 28, 2024

Date	Daily Statistics	Station 1						Station 2						Station 3						Station 4					
		TVOCs		H2S		Benzene		TVOCs		H2S		Benzene		TVOCs		H2S		Benzene		TVOCs		H2S		Benzene	
		Average ppb	Peak ppb	Average ppb	Peak ppb	Average ppb	Peak ppb	Average ppb	Peak ppb	Average ppb	Peak ppb	Average ppb	Peak ppb	Average ppb	Peak ppb	Average ppb	Peak ppb	Average ppb	Peak ppb	Average ppb	Peak ppb	Average ppb	Peak ppb	Average ppb	Peak ppb
July 22, 2024	Minimum	0.0	0.0	0.0	0.0	-	-	17.4	23.0	0.0	0.0	-	-	0.0	0.0	0.0	0.0	-	-	351.8	359.0	0.0	0.0	10.0	11.0
	Maximum	9.1	16.0	0.0	0.0	-	-	65.9	71.0	0.0	0.0	-	-	33.9	41.0	0.0	0.0	-	-	1,057.7	3,823.0	56.2	116.0	37.0	51.0
	Average	0.3	1.1	0.0	0.0	-	-	46.6	49.4	0.0	0.0	-	-	1.8	2.6	0.0	0.0	-	-	529.6	989.8	4.8	18.6	24.2	28.9
July 23, 2024	Minimum	0.0	0.0	0.0	0.0	-	-	18.3	19.0	0.0	0.0	-	-	0.0	0.0	0.0	0.0	-	-	357.1	366.0	0.0	0.0	14.6	17.0
	Maximum	1.9	19.0	0.0	0.0	-	-	106.2	124.0	0.0	0.0	-	-	61.6	70.0	0.0	0.0	-	-	1,614.1	4,500.0	46.6	104.0	56.0	110.0
	Average	0.0	0.4	0.0	0.0	-	-	57.0	61.7	0.0	0.0	-	-	12.1	14.6	0.0	0.0	-	-	638.4	1,396.5	5.1	18.1	29.2	41.5
July 24, 2024	Minimum	0.0	0.0	0.0	0.0	-	-	7.9	11.0	0.0	0.0	-	-	0.0	0.0	0.0	0.0	-	-	388.0	397.0	0.0	0.0	15.0	17.0
	Maximum	0.0	0.0	0.0	0.0	-	-	66.6	71.0	0.0	0.0	-	-	52.6	56.0	0.0	0.0	-	-	1,141.8	3,695.0	13.1	67.0	45.9	86.0
	Average	0.0	0.0	0.0	0.0	-	-	43.4	45.0	0.0	0.0	-	-	9.1	10.7	0.0	0.0	-	-	543.1	1,017.6	2.9	14.4	28.9	35.3
July 25, 2024	Minimum	0.0	0.0	0.0	0.0	-	-	17.2	19.0	0.0	0.0	-	-	0.0	0.0	0.0	0.0	-	-	367.3	371.0	0.0	0.0	14.5	15.0
	Maximum	0.0	0.0	0.0	0.0	-	-	66.3	68.0	0.0	0.0	-	-	8.3	13.0	0.0	0.0	-	-	891.8	2,277.0	62.5	94.0	37.0	49.0
	Average	0.0	0.0	0.0	0.0	-	-	44.1	45.7	0.0	0.0	-	-	0.5	1.0	0.0	0.0	-	-	477.3	713.4	5.4	18.5	22.8	26.7
July 26, 2024	Minimum	0.0	0.0	0.0	0.0	-	-	35.4	37.0	0.0	0.0	0.0	0.0	0.0	0.0	0.0	0.0	-	-	370.9	374.0	0.0	0.0	15.5	17.0
	Maximum	0.0	0.0	0.0	0.0	-	-	146.8	163.0	0.0	0.0	0.0	0.0	112.1	133.0	0.1	1.0	-	-	1,117.7	3,636.0	44.4	139.0	69.0	77.0
	Average	0.0	0.0	0.0	0.0	-	-	80.9	87.1	0.0	0.0	-	-	23.9	26.9	0.0	0.0	-	-	566.6	1,053.7	2.7	16.8	27.6	35.6
July 27, 2024	Minimum	0.0	0.0	0.0	0.0	-	-	37.1	39.0	0.0	0.0	0.0	0.0	0.0	0.0	0.0	0.0	0.0	0.0	400.4	409.0	0.0	0.0	9.0	9.0
	Maximum	0.0	0.0	0.0	0.0	-	-	259.4	428.0	1.7	7.0	0.0	0.0	124.9	166.0	0.0	0.0	0.0	0.0	1,762.4	4,174.0	19.3	76.0	51.2	110.0
	Average	0.0	0.0	0.0	0.0	-	-	84.0	90.2	0.0	0.1	-	-	38.9	44.4	0.0	0.0	0.0	0.0	631.7	1,046.4	2.6	14.6	27.4	37.1
July 28, 2024	Minimum	0.0	0.0	0.0	0.0	-	-	55.7	57.0	0.0	0.0	0.0	0.0	0.0	0.0	0.0	0.0	-	-	330.7	341.0	0.0	0.0	12.0	13.0
	Maximum	0.0	0.0	0.0	0.0	-	-	177.7	287.0	0.1	1.0	0.0	0.0	84.4	91.0	0.0	0.0	-	-	1,129.7	3,594.0	23.9	87.0	48.5	79.0
	Average	0.0	0.0	0.0	0.0	-	-	79.7	84.5	0.0	0.0	-	-	27.7	32.5	0.0	0.0	-	-	524.2	841.6	3.9	17.1	26.4	32.9

**Notes:**

- Data records with a dash indicate no data is available for that interval.
- Calibration readings and data produced during sensor errors are excluded from the report.
- The CTair monitoring systems at each station are programmed to initiate benzene sampling when a TVOC reading of  $\geq 160$  ppb is measured. It has been observed that there are occurrences of TVOC readings  $\geq 160$  ppb where the benzene sampling was not initiated. The affected stations and periods are included in the report table. The equipment manufacturer is actively working to resolve this issue.
- As discussed with the manufacturer of the H2S sensor, there is high likelihood that the H2S sensor has cross sensitivity with other sulfur compounds. Other sulfur compounds include, but are not limited to, carbonyl sulfide, dimethyl sulfide, dimethyl disulfide, and methyl mercaptan.



## Perimeter Air Monitoring Weekly Report

Real-Time Multigas Monitoring  
Bristol Landfill Air Investigation

July 22 - July 28, 2024

Date	Daily Statistics	Bristol Met Station				
		Wind Dir degrees	Wind Speed mph	Temp °F	Rel Humidity %	Baro mbar
July 22, 2024	Minimum		0.0	67.4	57.7	949.6
	Maximum		16.0	82.3	95.5	952.6
	Average	190.0	2.1	73.3	81.8	951.4
July 23, 2024	Minimum		0.0	67.4	59.2	952.4
	Maximum		11.0	83.0	96.9	955.0
	Average	197.5	2.1	74.4	80.3	953.5
July 24, 2024	Minimum		0.0	69.5	73.5	954.6
	Maximum		9.0	78.8	95.5	957.4
	Average	216.2	1.8	72.8	87.9	956.1
July 25, 2024	Minimum		0.0	68.3	70.4	954.2
	Maximum		7.0	79.5	96.5	957.3
	Average	198.0	1.3	73.0	87.8	956.0
July 26, 2024	Minimum		0.0	67.2	45.8	952.3
	Maximum		7.0	83.1	96.3	955.7
	Average	156.0	1.4	74.2	76.5	953.9
July 27, 2024	Minimum		0.0	64.0	38.8	952.4
	Maximum		7.0	85.6	92.8	955.3
	Average	175.5	1.7	74.7	68.6	953.9
July 28, 2024	Minimum		0.0	64.5	51.6	952.5
	Maximum		12.0	86.4	95.3	956.6
	Average	166.8	1.8	72.9	79.7	954.7

**Notes:**

- Dash/Blank data records indicate no data is available for that interval.
- Wind direction is a daily (24-hr) average value; with the origin of wind in degrees; clockwise from North calculated with vector averaging.