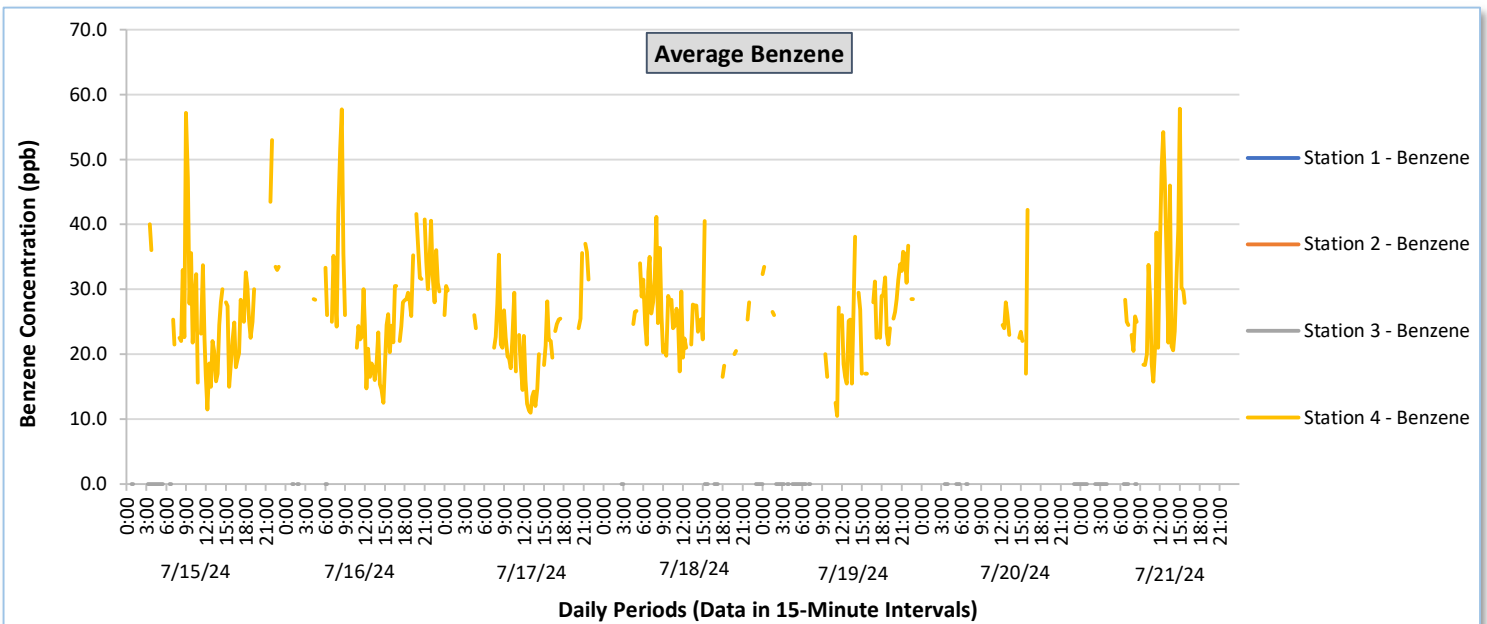
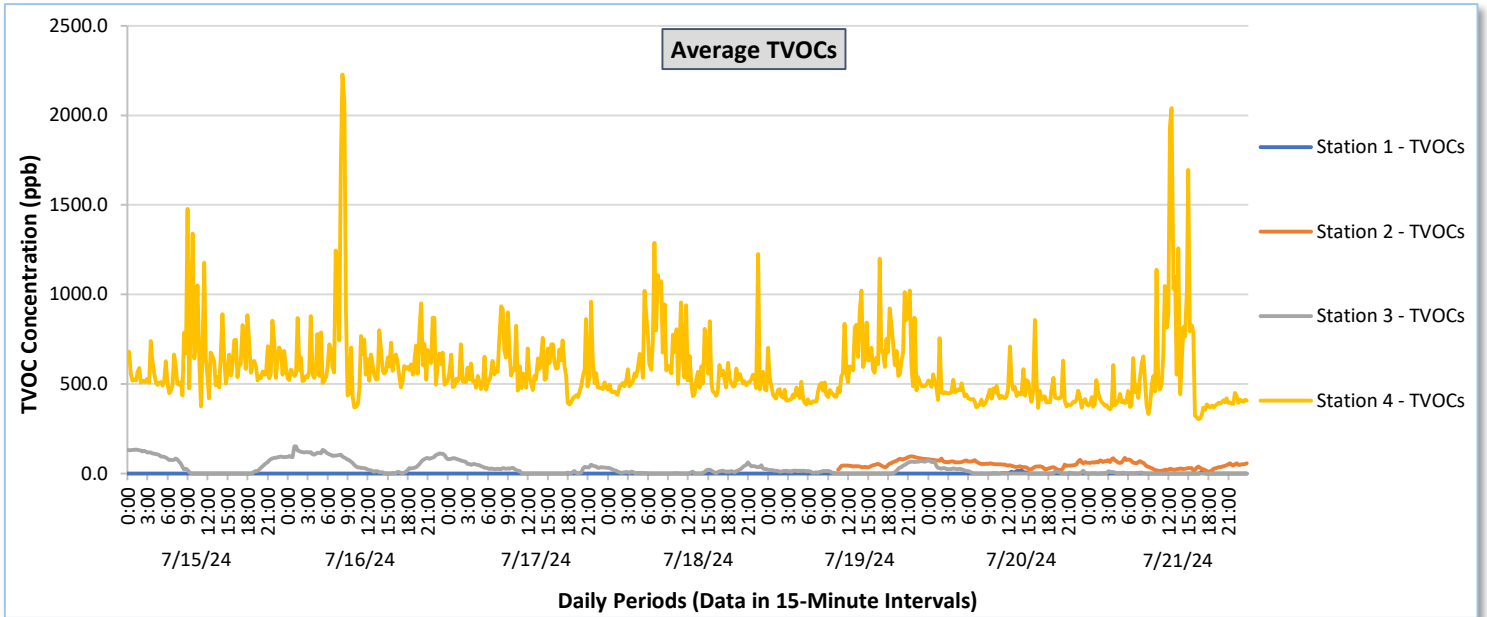




Perimeter Air Monitoring Weekly Report

Real-Time Multigas Monitoring
Bristol Landfill Air Investigation

July 15 - July 21, 2024

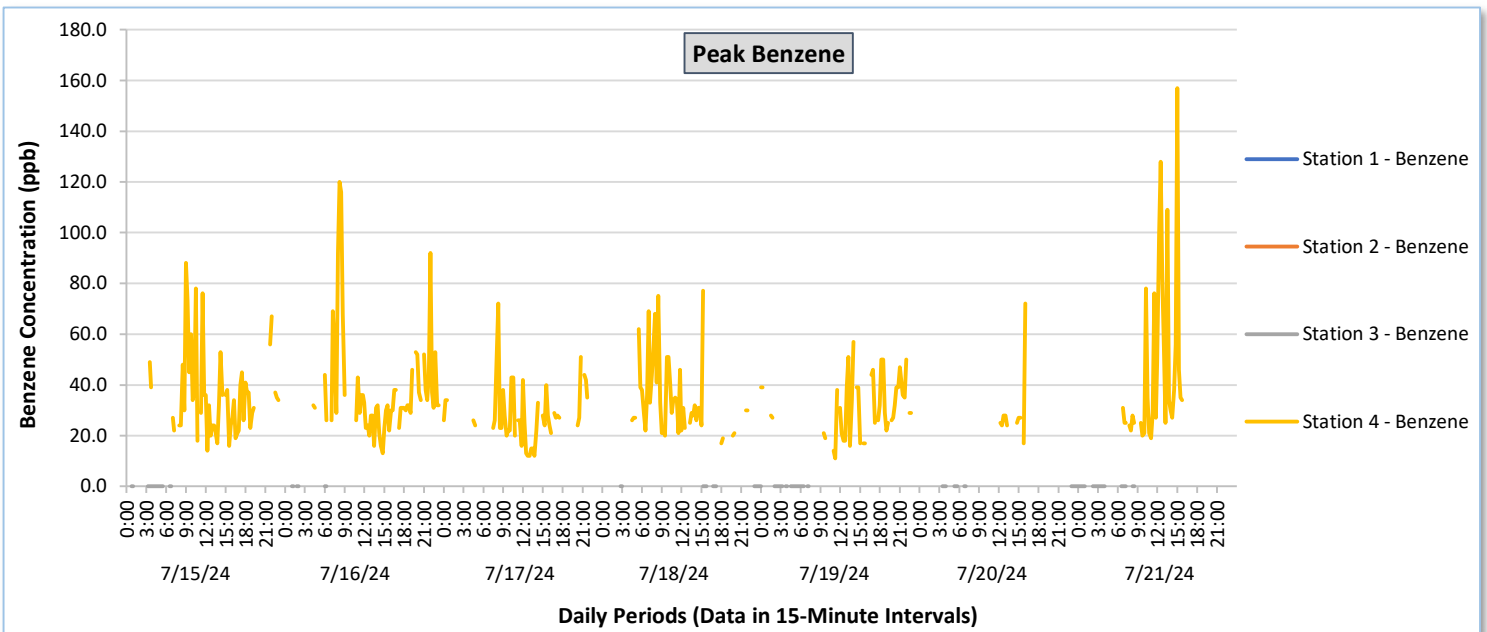
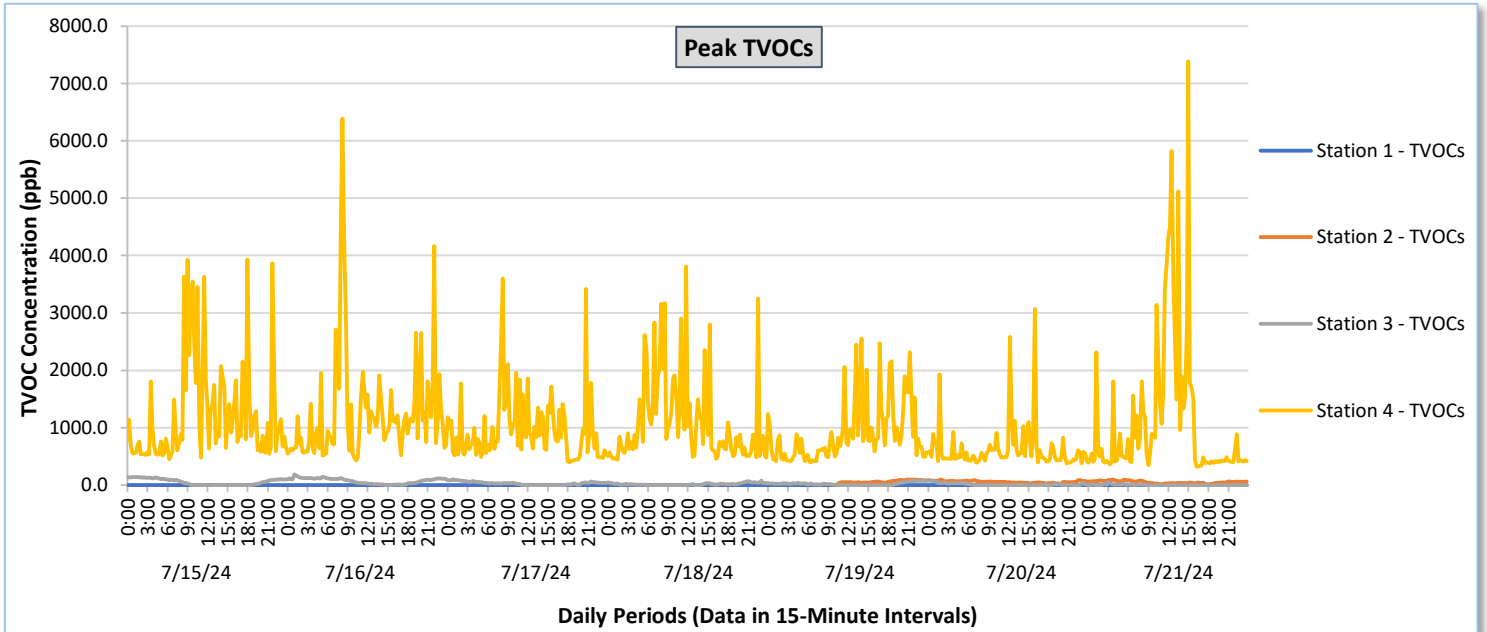




Perimeter Air Monitoring Weekly Report

Real-Time Multigas Monitoring
Bristol Landfill Air Investigation

July 15 - July 21, 2024

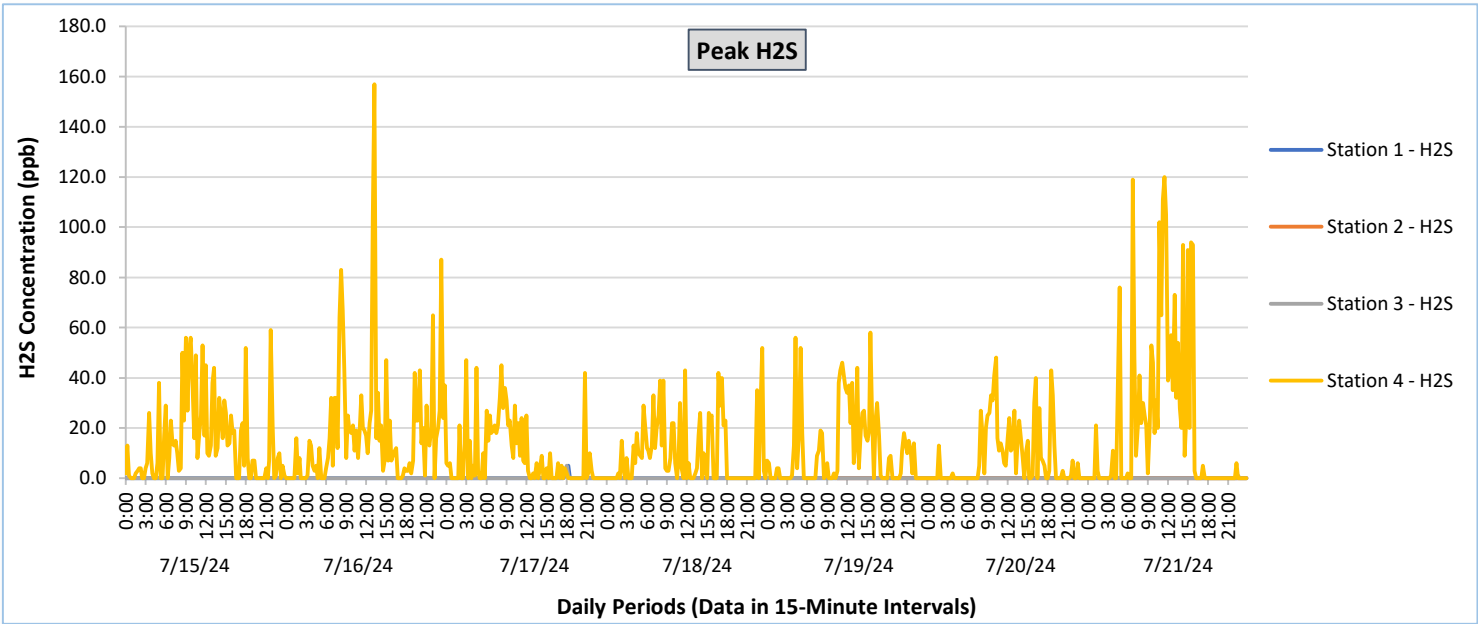
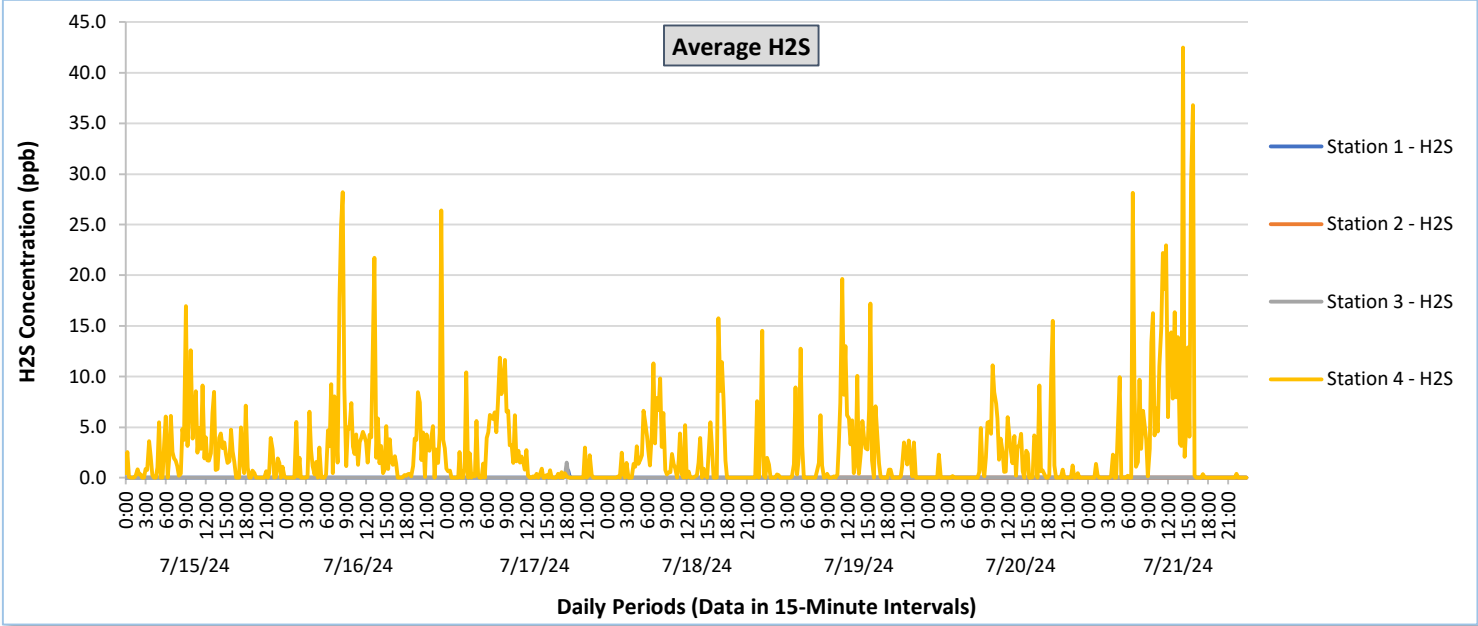




Perimeter Air Monitoring Weekly Report

Real-Time Multigas Monitoring
Bristol Landfill Air Investigation

July 15 - July 21, 2024





Perimeter Air Monitoring Weekly Report

Real-Time Multigas Monitoring
Bristol Landfill Air Investigation
July 15 - July 21, 2024

Date	Daily Statistics	Station 1						Station 2						Station 3						Station 4					
		TVOCs		H2S		Benzene		TVOCs		H2S		Benzene		TVOCs		H2S		Benzene		TVOCs		H2S		Benzene	
		Average ppb	Peak ppb	Average ppb	Peak ppb	Average ppb	Peak ppb	Average ppb	Peak ppb	Average ppb	Peak ppb	Average ppb	Peak ppb	Average ppb	Peak ppb	Average ppb	Peak ppb	Average ppb	Peak ppb	Average ppb	Peak ppb	Average ppb	Peak ppb	Average ppb	Peak ppb
July 15, 2024	Minimum	0.0	0.0	0.0	0.0	-	-	-	-	-	-	-	-	0.0	0.0	0.0	0.0	-	-	375.3	453.0	0.0	0.0	11.5	14.0
	Maximum	0.0	0.0	0.0	0.0	-	-	-	-	-	-	-	-	133.3	138.0	0.0	0.0	-	-	1,476.9	3,929.0	16.9	59.0	57.2	88.0
	Average	0.0	0.0	0.0	0.0	-	-	-	-	-	-	-	-	50.8	54.1	0.0	0.0	-	-	623.3	1,221.6	2.3	14.3	27.1	35.9
July 16, 2024	Minimum	0.0	0.0	0.0	0.0	-	-	-	-	-	-	-	-	0.0	0.0	0.0	0.0	-	-	368.4	430.0	0.0	0.0	12.5	13.0
	Maximum	0.0	0.0	0.0	0.0	-	-	-	-	-	-	-	-	151.2	183.0	0.0	0.0	-	-	2,228.4	6,390.0	28.2	157.0	57.7	120.0
	Average	0.0	0.0	0.0	0.0	-	-	-	-	-	-	-	-	67.5	71.4	0.0	0.0	-	-	664.9	1,268.8	3.7	18.7	28.1	38.3
July 17, 2024	Minimum	0.0	0.0	0.0	0.0	-	-	-	-	-	-	-	-	0.0	0.0	0.0	0.0	-	-	385.8	396.0	0.0	0.0	11.0	12.0
	Maximum	0.0	0.0	0.9	5.0	-	-	-	-	-	-	-	-	85.3	97.0	1.5	5.0	-	-	960.1	3,599.0	11.9	47.0	37.0	72.0
	Average	0.0	0.0	0.0	0.1	-	-	-	-	-	-	-	-	27.0	30.3	0.0	0.1	-	-	574.7	970.0	1.7	8.6	23.3	28.6
July 18, 2024	Minimum	0.0	0.0	0.0	0.0	-	-	-	-	-	-	-	-	0.0	0.0	0.0	0.0	-	-	431.6	445.0	0.0	0.0	16.5	17.0
	Maximum	0.0	0.0	0.0	0.0	-	-	-	-	-	-	-	-	62.3	74.0	0.0	0.0	-	-	1,288.4	3,807.0	15.8	52.0	43.3	80.0
	Average	0.0	0.0	0.0	0.0	-	-	-	-	-	-	-	-	12.0	15.7	0.0	0.0	-	-	604.5	1,089.3	2.1	9.8	26.2	34.8
July 19, 2024	Minimum	0.0	0.0	0.0	0.0	-	-	22.1	25.0	0.0	0.0	-	-	0.0	0.0	0.0	0.0	-	-	387.1	402.0	0.0	0.0	10.5	11.0
	Maximum	0.0	0.0	0.0	0.0	-	-	95.5	96.0	0.0	0.0	-	-	69.5	76.0	0.0	0.0	-	-	1,198.7	2,554.0	19.6	58.0	38.1	57.0
	Average	0.0	0.0	0.0	0.0	-	-	58.3	61.9	0.0	0.0	-	-	16.0	20.3	0.0	0.0	-	-	574.2	905.6	2.1	10.9	25.7	31.7
July 20, 2024	Minimum	0.0	0.0	0.0	0.0	-	-	20.0	21.0	0.0	0.0	-	-	0.0	0.0	0.0	0.0	-	-	365.4	380.0	0.0	0.0	17.0	17.0
	Maximum	18.9	31.0	0.0	0.0	-	-	83.1	93.0	0.0	0.0	-	-	75.5	78.0	0.0	0.0	-	-	856.3	3,070.0	15.5	48.0	42.2	72.0
	Average	1.0	2.5	0.0	0.0	-	-	51.7	54.5	0.0	0.0	-	-	9.8	12.5	0.0	0.0	-	-	452.9	625.7	1.6	7.9	27.3	31.6
July 21, 2024	Minimum	0.0	0.0	0.0	0.0	-	-	9.3	10.0	0.0	0.0	-	-	0.0	0.0	0.0	0.0	-	-	303.2	322.0	0.0	0.0	15.8	19.0
	Maximum	11.9	39.0	0.0	0.0	-	-	87.1	93.0	0.0	0.0	-	-	10.6	55.0	0.1	1.0	-	-	2,041.0	7,387.0	42.5	120.0	57.8	157.0
	Average	0.2	0.7	0.0	0.0	-	-	44.8	49.0	0.0	0.0	-	-	0.8	3.4	0.0	0.0	-	-	541.3	1,126.9	4.6	20.8	29.7	45.1

Notes:

- Data records with a dash indicate no data is available for that interval.
- Calibration readings and data produced during sensor errors are excluded from the report.
- Station 2 went offline on 6/20/2024 due to technical problems and returned online on 7/19/2024.
- The CTair monitoring systems at each station are programmed to initiate benzene sampling when a TVOC reading of ≥ 160 ppb is measured. It has been observed that there are occurrences of TVOC readings ≥ 160 ppb where the benzene sampling was not initiated. The affected stations and periods are included in the report table. The equipment manufacturer is actively working to resolve this issue.
- As discussed with the manufacturer of the H2S sensor, there is high likelihood that the H2S sensor has cross sensitivity with other sulfur compounds. Other sulfur compounds include, but are not limited to, carbonyl sulfide, dimethyl sulfide, dimethyl disulfide, and methyl mercaptan.



Perimeter Air Monitoring Weekly Report

Real-Time Multigas Monitoring
Bristol Landfill Air Investigation

July 15 - July 21, 2024

Date	Daily Statistics	Bristol Met Station				
		Wind Dir degrees	Wind Speed mph	Temp °F	Rel Humidity %	Baro mbar
July 15, 2024	Minimum		0.0	63.5	37.1	948.4
	Maximum		10.0	93.8	86.4	953.8
	Average	158.4	2.0	79.7	60.5	951.4
July 16, 2024	Minimum		0.0	71.9	47.9	948.3
	Maximum		15.0	90.2	81.6	951.9
	Average	218.9	2.8	80.4	68.0	949.8
July 17, 2024	Minimum		0.0	68.8	43.8	946.9
	Maximum		19.0	91.0	91.9	951.4
	Average	227.5	2.8	77.0	77.1	949.6
July 18, 2024	Minimum		0.0	67.5	64.4	949.6
	Maximum		10.0	78.6	95.2	952.7
	Average	202.6	1.9	71.9	85.0	950.8
July 19, 2024	Minimum		0.0	62.5	39.5	951.1
	Maximum		10.0	88.1	95.9	954.3
	Average	145.5	1.8	74.8	70.5	952.8
July 20, 2024	Minimum		0.0	68.3	76.1	952.2
	Maximum		6.0	76.0	94.4	954.8
	Average	152.3	1.3	70.9	88.6	953.5
July 21, 2024	Minimum		0.0	63.6	61.6	950.9
	Maximum		16.0	82.4	95.5	953.8
	Average	99.5	2.1	71.5	85.1	952.5

Notes:

- Dash/Blank data records indicate no data is available for that interval.
- Wind direction is a daily (24-hr) average value; with the origin of wind in degrees; clockwise from North calculated with vector averaging.