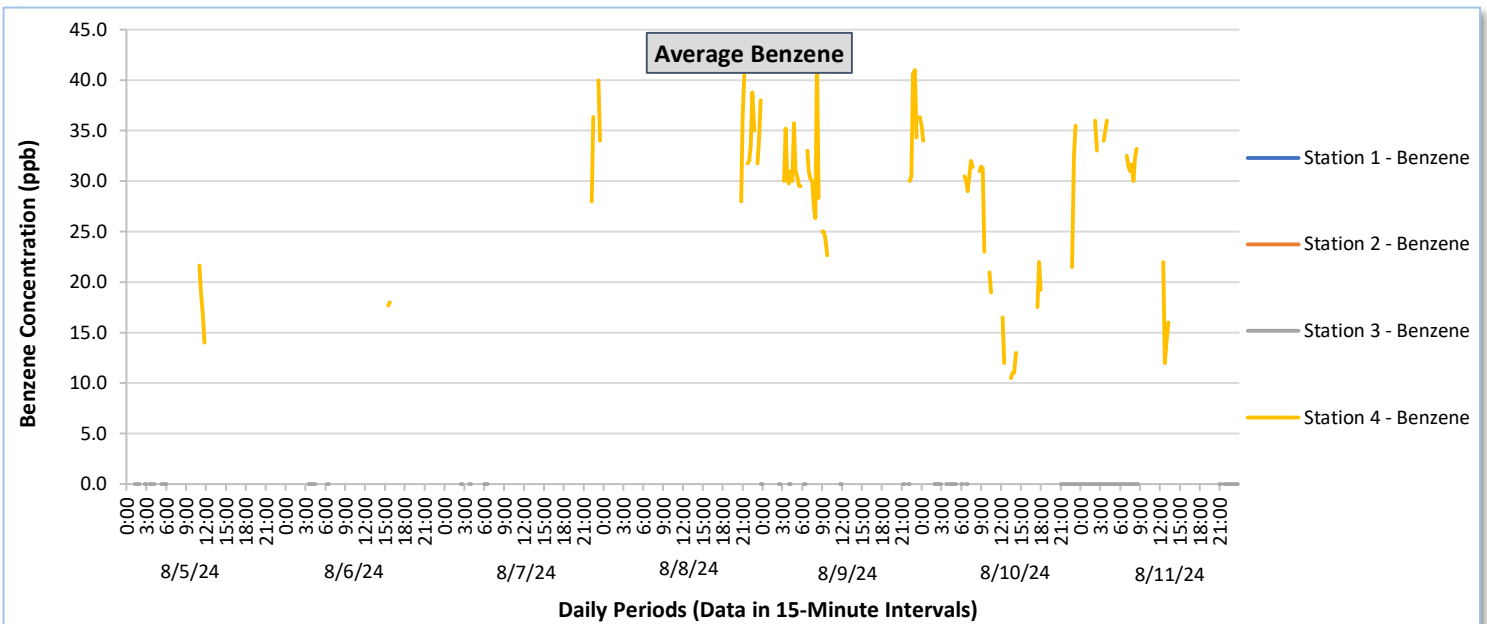
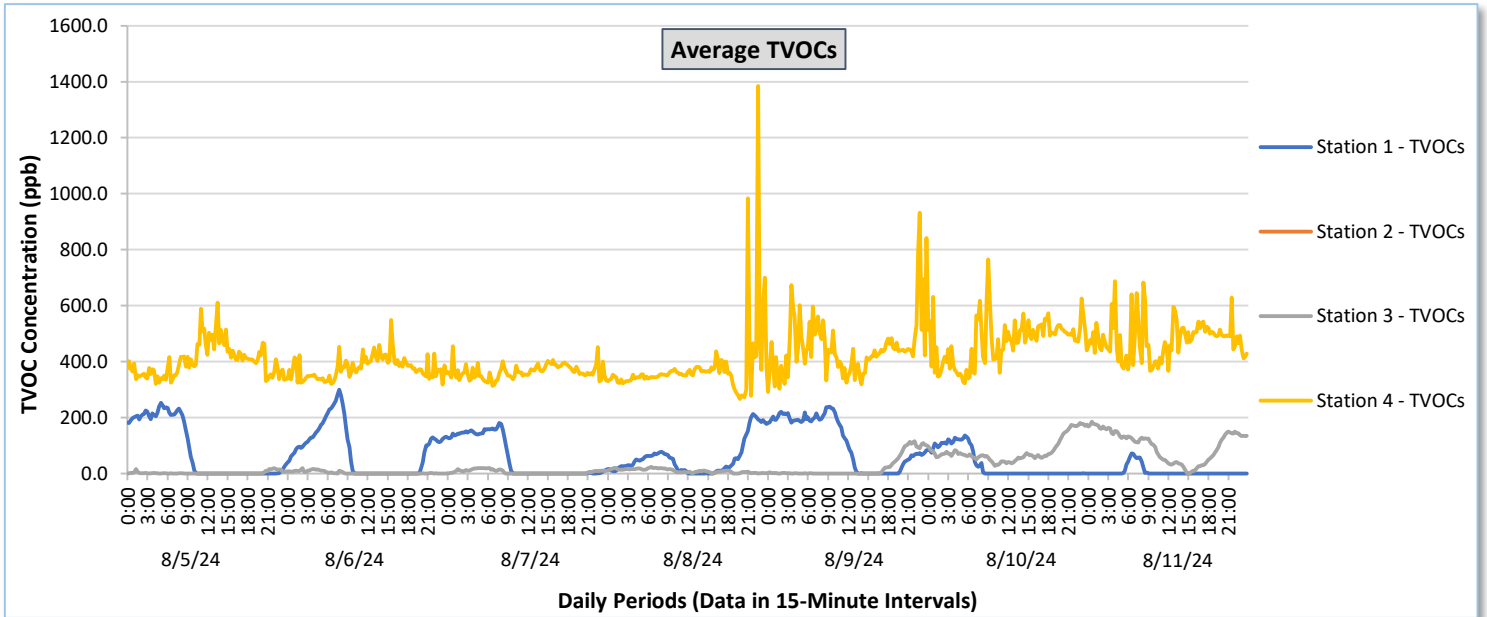




# Perimeter Air Monitoring Weekly Report

Real-Time Multigas Monitoring  
Bristol Landfill Air Investigation

August 5 - August 11, 2024

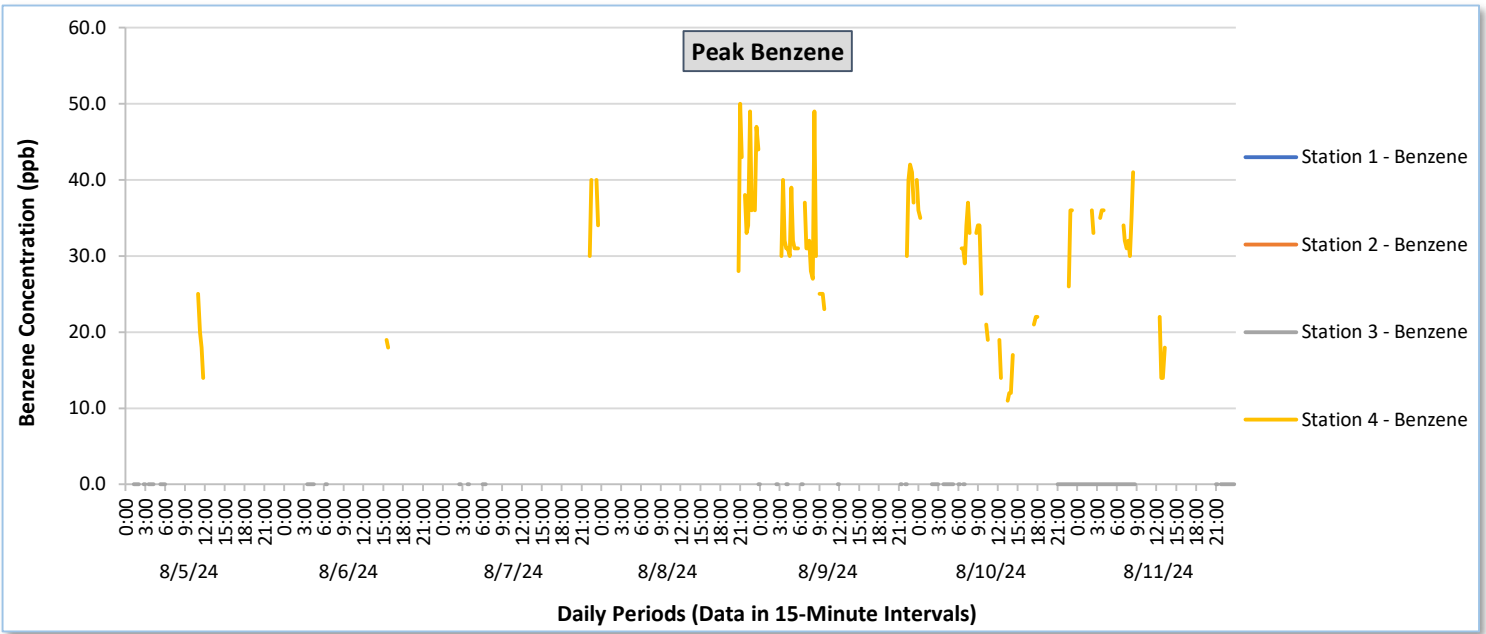
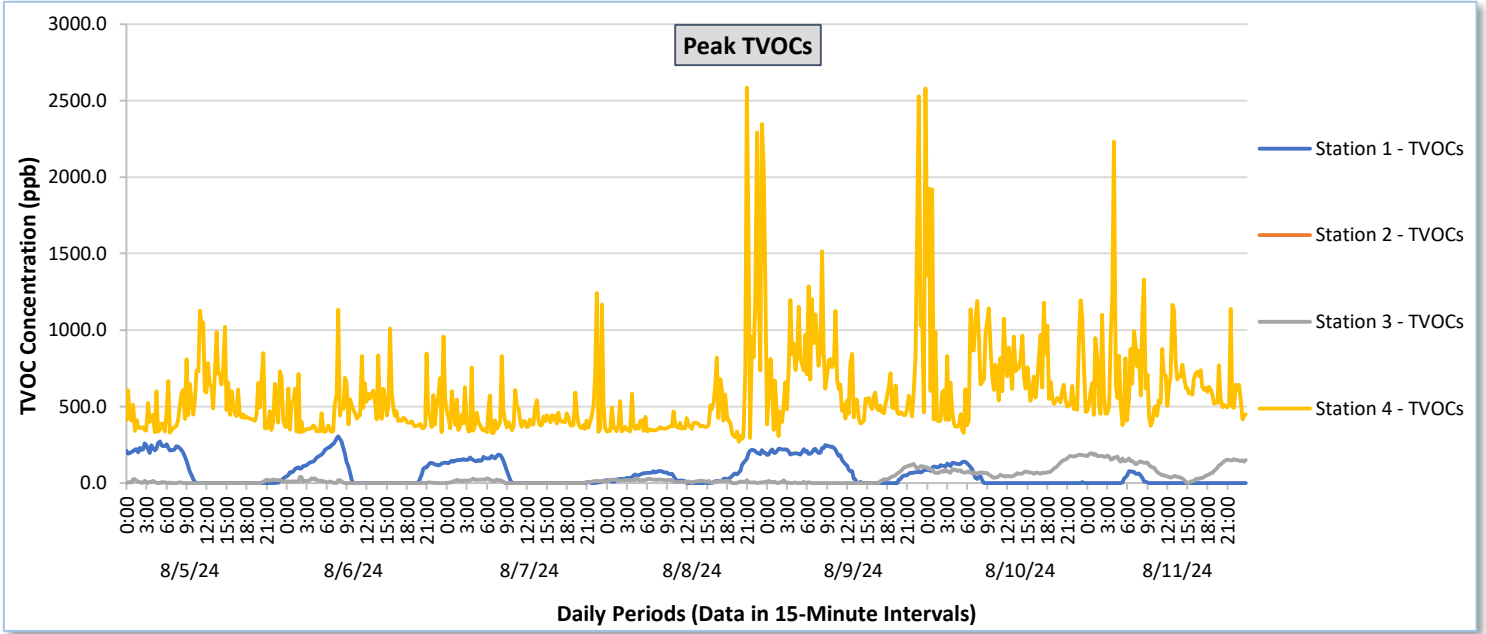




# Perimeter Air Monitoring Weekly Report

Real-Time Multigas Monitoring  
Bristol Landfill Air Investigation

August 5 - August 11, 2024

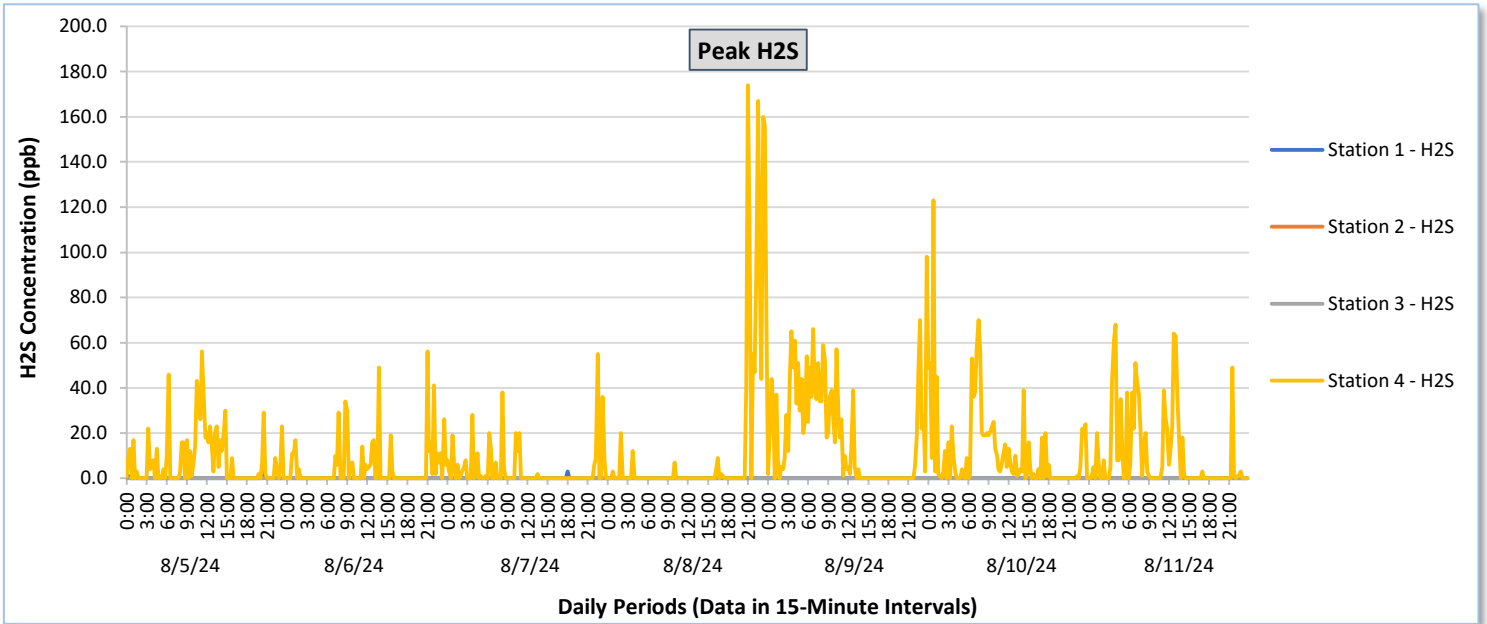
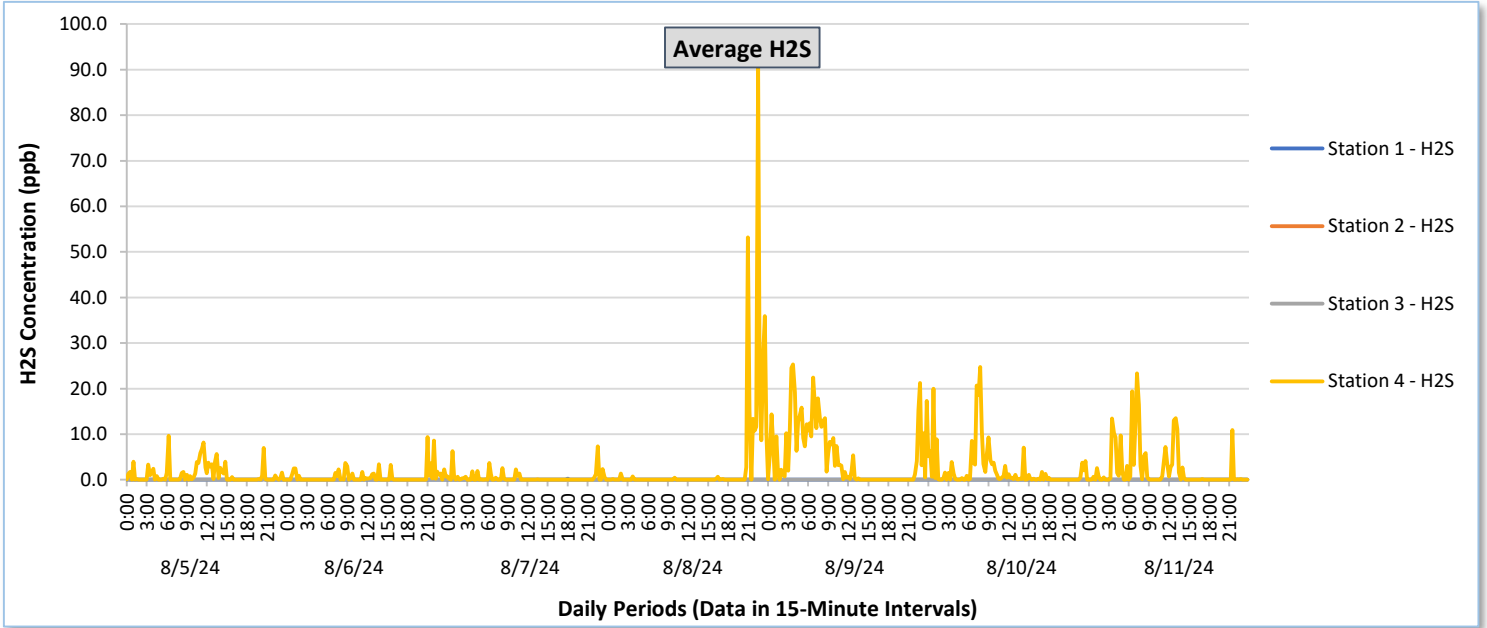




# Perimeter Air Monitoring Weekly Report

Real-Time Multigas Monitoring  
Bristol Landfill Air Investigation

August 5 - August 11, 2024





# Perimeter Air Monitoring Weekly Report

Real-Time Multigas Monitoring  
Bristol Landfill Air Investigation  
August 5 - August 11, 2024

Date	Daily Statistics	Station 1						Station 2						Station 3						Station 4					
		TVOCs		H2S		Benzene		TVOCs		H2S		Benzene		TVOCs		H2S		Benzene		TVOCs		H2S		Benzene	
		Average ppb	Peak ppb	Average ppb	Peak ppb	Average ppb	Peak ppb	Average ppb	Peak ppb	Average ppb	Peak ppb	Average ppb	Peak ppb	Average ppb	Peak ppb	Average ppb	Peak ppb	Average ppb	Peak ppb	Average ppb	Peak ppb	Average ppb	Peak ppb	Average ppb	Peak ppb
August 5, 2024	Minimum	0.0	0.0	0.0	0.0	0.0	0.0	-	-	-	-	-	-	0.0	0.0	0.0	0.0	-	-	320.1	328.0	0.0	0.0	13.0	14.0
	Maximum	252.5	271.0	0.4	4.0	0.0	0.0	-	-	-	-	-	-	20.3	25.0	0.0	0.0	-	-	610.7	1,129.0	9.6	56.0	30.5	34.0
	Average	83.4	89.1	0.0	0.1	-	-	-	-	-	-	-	-	2.2	4.2	0.0	0.0	-	-	402.2	524.1	1.1	7.8	19.4	21.7
August 6, 2024	Minimum	0.0	0.0	0.0	0.0	0.0	0.0	-	-	-	-	-	-	0.0	0.0	0.0	0.0	-	-	317.3	330.0	0.0	0.0	12.3	17.0
	Maximum	298.9	306.0	0.0	0.0	0.0	0.0	-	-	-	-	-	-	19.5	39.0	0.0	0.0	-	-	548.1	1,135.0	9.4	56.0	33.0	37.0
	Average	79.8	84.3	0.0	0.0	-	-	-	-	-	-	-	-	3.0	5.0	0.0	0.0	-	-	377.4	480.6	0.7	5.2	21.3	24.4
August 7, 2024	Minimum	0.0	0.0	0.0	0.0	0.0	0.0	-	-	-	-	-	-	0.0	0.0	0.0	0.0	-	-	312.9	326.0	0.0	0.0	27.5	29.0
	Maximum	180.1	185.0	0.2	3.0	0.0	0.0	-	-	-	-	-	-	20.2	31.0	0.0	0.0	-	-	454.4	1,242.0	7.3	55.0	40.0	40.0
	Average	57.0	60.2	0.0	0.0	-	-	-	-	-	-	-	-	5.5	7.4	0.0	0.0	-	-	364.5	440.9	0.4	3.7	33.0	34.6
August 8, 2024	Minimum	0.0	0.0	0.0	0.0	0.0	0.0	-	-	-	-	-	-	0.0	0.0	0.0	0.0	-	-	265.9	270.0	0.0	0.0	28.0	28.0
	Maximum	212.3	217.0	0.0	0.0	0.0	0.0	-	-	-	-	-	-	23.8	31.0	0.0	0.0	-	-	1,384.6	2,586.0	90.4	174.0	40.5	50.0
	Average	52.7	56.8	0.0	0.0	-	-	-	-	-	-	-	-	9.6	12.5	0.0	0.0	-	-	377.2	527.3	3.2	13.2	34.0	38.7
August 9, 2024	Minimum	0.0	0.0	0.0	0.0	0.0	0.0	-	-	-	-	-	-	0.0	0.0	0.0	0.0	-	-	291.9	308.0	0.0	0.0	21.0	23.0
	Maximum	238.8	248.0	0.0	0.0	0.0	0.0	-	-	-	-	-	-	115.3	125.0	0.0	0.0	-	-	932.3	2,579.0	25.3	98.0	42.7	49.0
	Average	111.8	117.2	0.0	0.0	-	-	-	-	-	-	-	-	20.9	23.1	0.0	0.0	-	-	447.7	703.6	5.2	19.0	30.5	32.3
August 10, 2024	Minimum	0.0	0.0	0.0	0.0	-	-	-	-	-	-	-	-	27.2	33.0	0.0	0.0	0.0	0.0	322.3	329.0	0.0	0.0	10.5	11.0
	Maximum	136.4	140.0	0.0	0.0	-	-	-	-	-	-	-	-	180.0	185.0	0.0	0.0	0.0	0.0	764.4	1,924.0	24.8	123.0	35.5	37.0
	Average	33.5	35.9	0.0	0.0	-	-	-	-	-	-	-	-	79.5	85.1	0.0	0.0	0.0	0.0	472.5	714.7	2.2	11.8	23.5	25.2
August 11, 2024	Minimum	0.0	0.0	0.0	0.0	-	-	-	-	-	-	-	-	0.0	0.0	0.0	0.0	0.0	0.0	366.7	375.0	0.0	0.0	12.0	13.0
	Maximum	71.6	78.0	0.0	0.0	-	-	-	-	-	-	-	-	184.5	195.0	0.0	0.0	0.0	0.0	686.1	2,232.0	23.3	68.0	36.0	41.0
	Average	6.1	7.3	0.0	0.0	-	-	-	-	-	-	-	-	99.7	108.1	0.0	0.0	0.0	0.0	479.3	666.5	2.3	10.1	27.0	28.8

**Notes:**

- Data records with a dash indicate no data is available for that interval.
- Calibration readings and data produced during sensor errors are excluded from the report.
- Station 2 shut down on 7/30/2024 due to technical problems and is scheduled for maintenance.
- The CTair monitoring systems at each station are programmed to initiate benzene sampling when a TVOC reading of  $\geq 160$  ppb is measured. It has been observed that there are occurrences of TVOC readings  $\geq 160$  ppb where the benzene sampling was not initiated. The affected stations and periods are included in the report table. The equipment manufacturer is actively working to resolve this issue.
- As discussed with the manufacturer of the H2S sensor, there is high likelihood that the H2S sensor has cross sensitivity with other sulfur compounds. Other sulfur compounds include, but are not limited to, carbonyl sulfide, dimethyl sulfide, dimethyl disulfide, and methyl mercaptan.



## Perimeter Air Monitoring Weekly Report

Real-Time Multigas Monitoring  
Bristol Landfill Air Investigation

August 5 - August 11, 2024

Date	Daily Statistics	Bristol Met Station				
		Wind Dir degrees	Wind Speed mph	Temp °F	Rel Humidity %	Baro mbar
August 5, 2024	Minimum		0.0	65.7	41.6	950.9
	Maximum		8.0	88.1	94.8	954.7
	Average	134.6	1.8	77.1	70.9	952.9
August 6, 2024	Minimum		0.0	68.1	54.6	946.1
	Maximum		9.0	86.6	92.6	952.3
	Average	87.4	2.3	77.4	74.4	949.1
August 7, 2024	Minimum		0.0	68.3	48.7	942.3
	Maximum		11.0	88.0	93.3	947.1
	Average	72.6	3.5	78.1	73.5	944.9
August 8, 2024	Minimum		0.0	68.9	70.1	942.1
	Maximum		14.0	76.1	94.8	943.8
	Average	114.6	3.7	72.8	82.0	942.8
August 9, 2024	Minimum		0.0	68.6	56.3	942.8
	Maximum		10.0	85.2	96.0	951.0
	Average	238.6	1.9	75.3	80.4	946.7
August 10, 2024	Minimum		0.0	64.0	50.4	950.9
	Maximum		9.0	83.1	94.7	954.0
	Average	211.7	1.5	73.8	73.0	952.3
August 11, 2024	Minimum		0.0	59.3	42.2	951.2
	Maximum		8.0	82.5	91.4	954.6
	Average	166.3	1.6	70.6	69.7	953.1

**Notes:**

- Dash/Blank data records indicate no data is available for that interval.
- Wind direction is a daily (24-hr) average value; with the origin of wind in degrees; clockwise from North calculated with vector averaging.