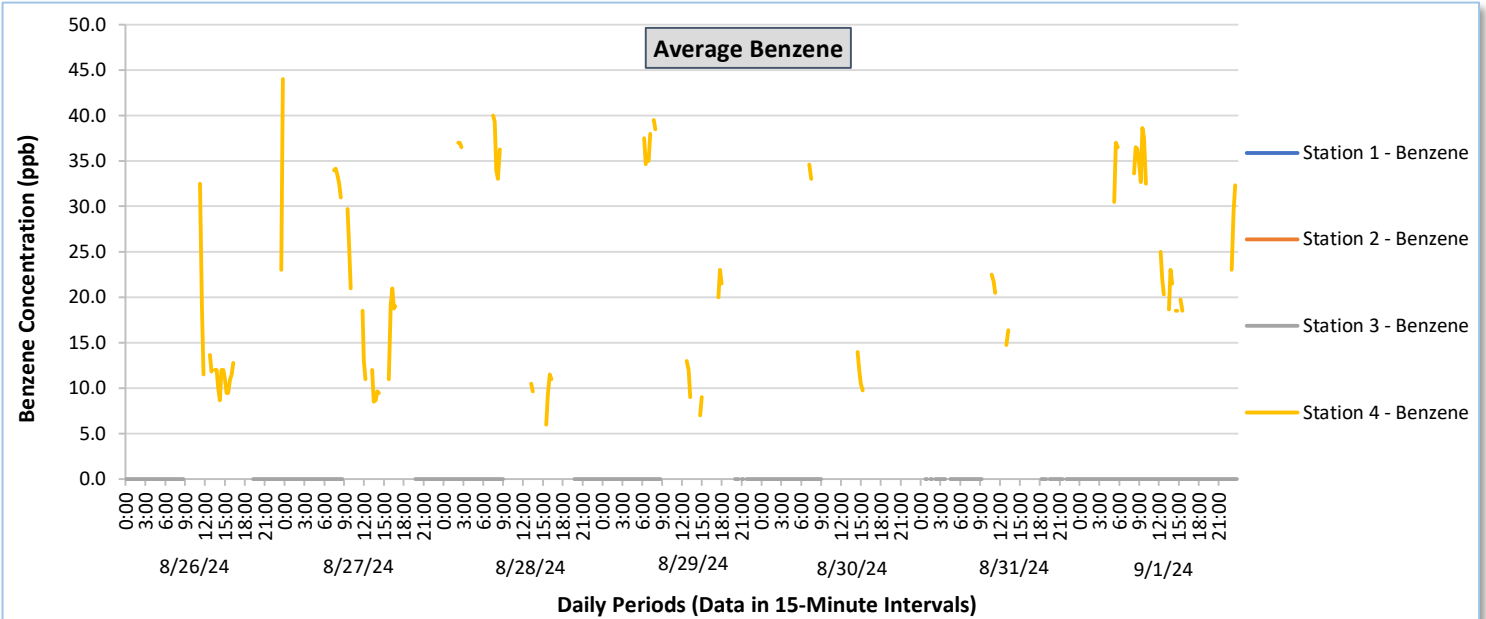
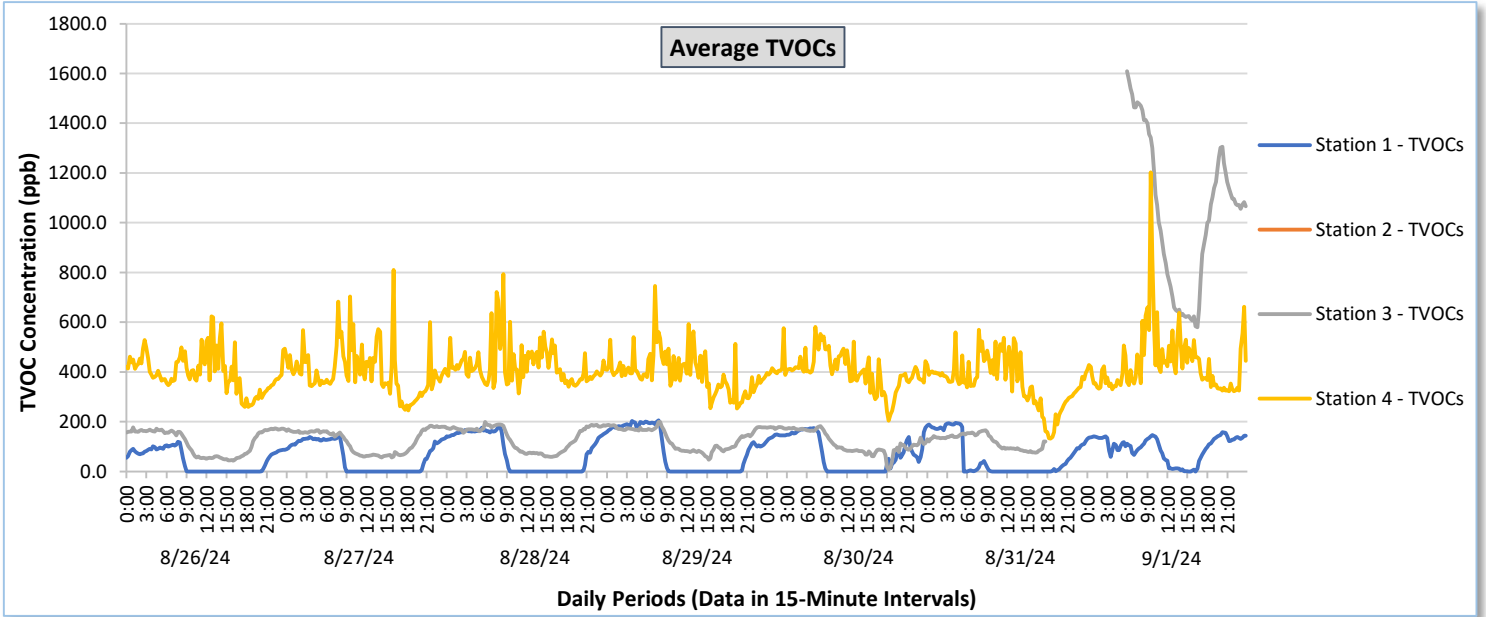




# Perimeter Air Monitoring Weekly Report

Real-Time Multigas Monitoring  
Bristol Landfill Air Investigation

August 26 - September 1, 2024

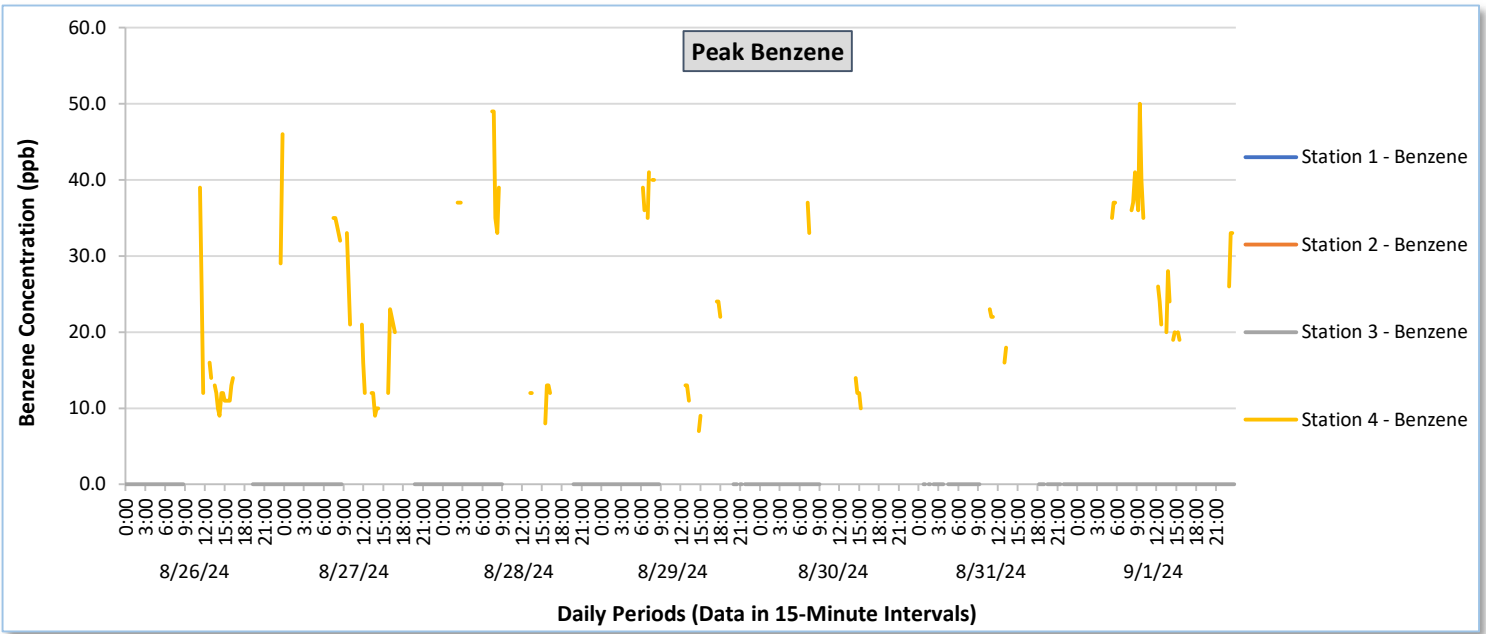
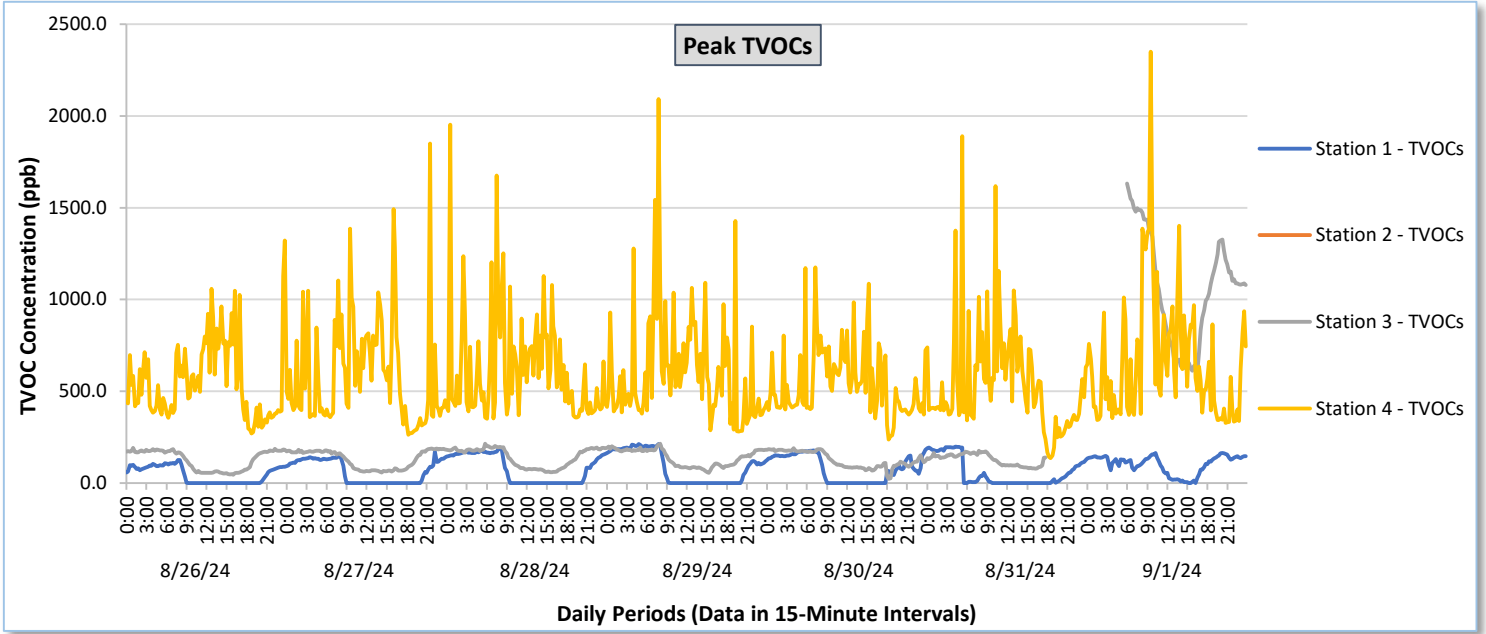




# Perimeter Air Monitoring Weekly Report

Real-Time Multigas Monitoring  
Bristol Landfill Air Investigation

August 26 - September 1, 2024

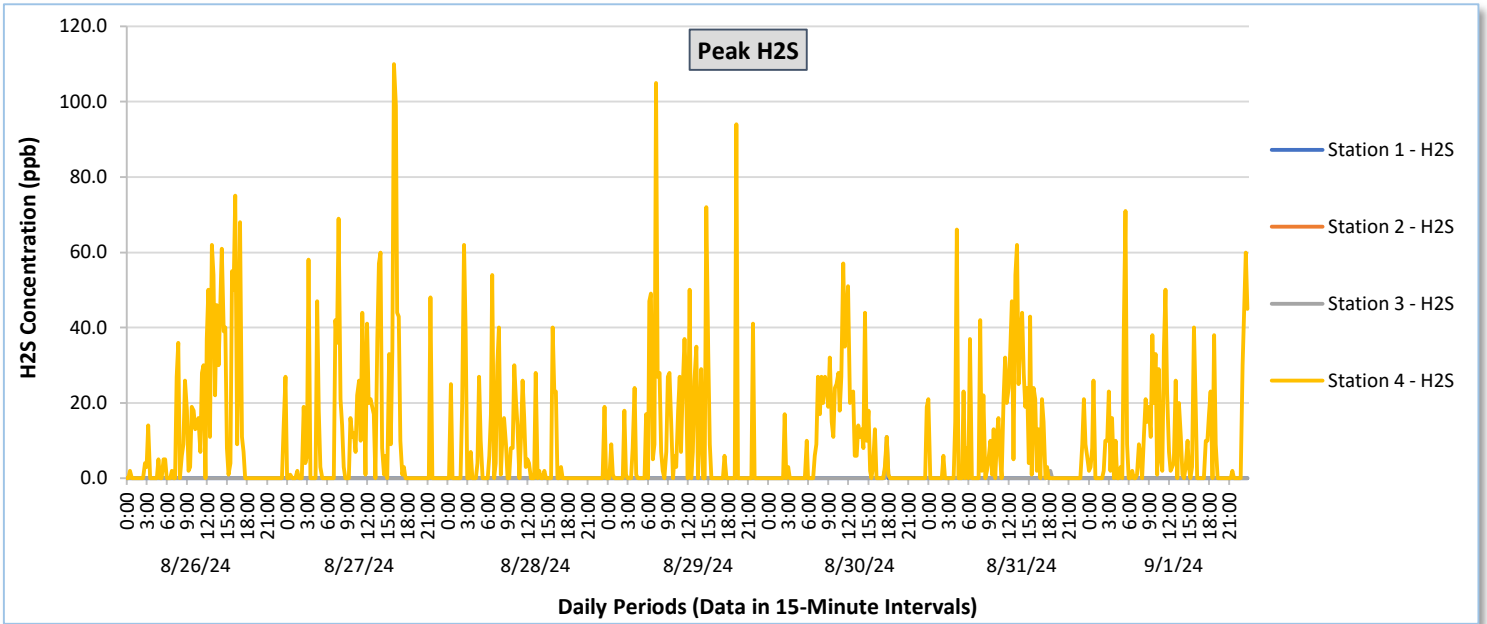
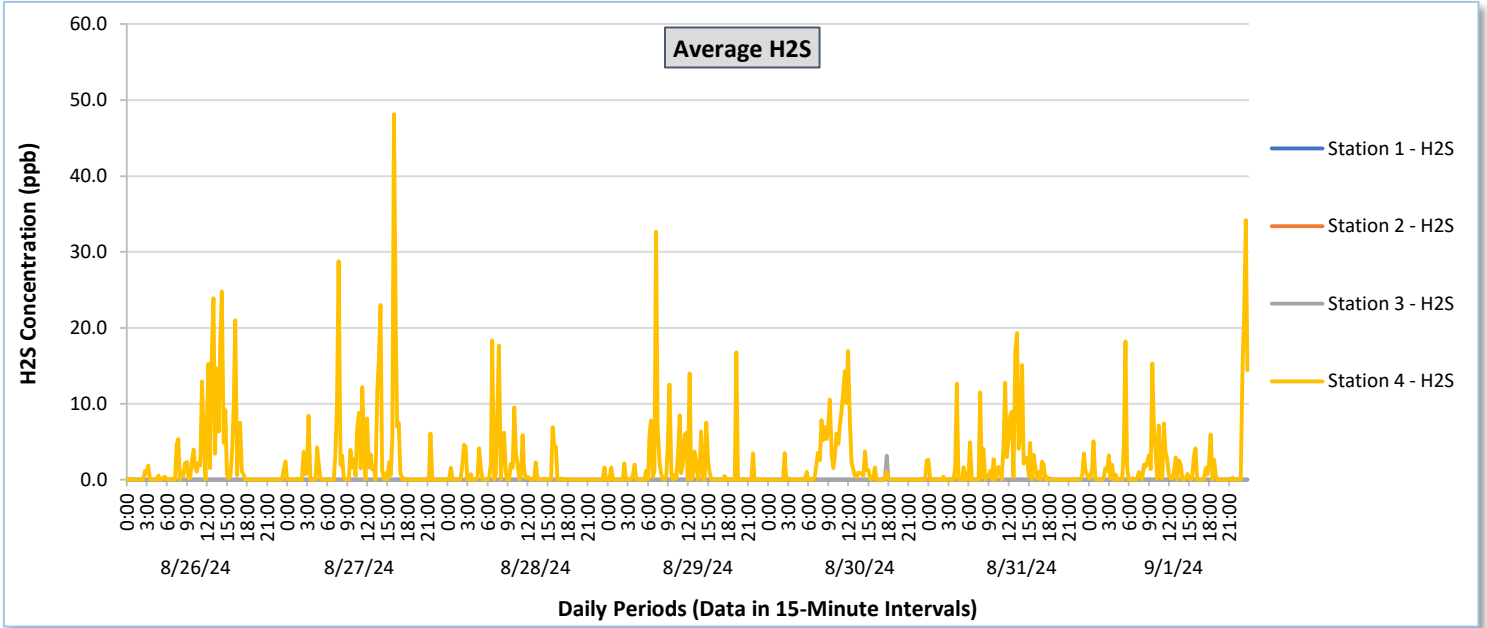




# Perimeter Air Monitoring Weekly Report

Real-Time Multigas Monitoring  
Bristol Landfill Air Investigation

August 26 - September 1, 2024





## Perimeter Air Monitoring Weekly Report

Real-Time Multigas Monitoring  
Bristol Landfill Air Investigation  
August 26 - September 1, 2024

| Date              | Daily Statistics | Station 1   |          |             |          |             |          | Station 2   |          |             |          |             |          | Station 3   |          |             |          |             |          | Station 4   |          |             |          |             |          |
|-------------------|------------------|-------------|----------|-------------|----------|-------------|----------|-------------|----------|-------------|----------|-------------|----------|-------------|----------|-------------|----------|-------------|----------|-------------|----------|-------------|----------|-------------|----------|
|                   |                  | TVOCs       |          | H2S         |          | Benzene     |          | TVOCs       |          | H2S         |          | Benzene     |          | TVOCs       |          | H2S         |          | Benzene     |          | TVOCs       |          | H2S         |          | Benzene     |          |
|                   |                  | Average ppb | Peak ppb | Average ppb | Peak ppb | Average ppb | Peak ppb | Average ppb | Peak ppb | Average ppb | Peak ppb | Average ppb | Peak ppb | Average ppb | Peak ppb | Average ppb | Peak ppb | Average ppb | Peak ppb | Average ppb | Peak ppb | Average ppb | Peak ppb | Average ppb | Peak ppb |
| August 26, 2024   | Minimum          | 0.0         | 0.0      | 0.0         | 0.0      | -           | -        | -           | -        | -           | -        | -           | -        | 43.3        | 44.0     | 0.0         | 0.0      | 0.0         | 0.0      | 259.3       | 271.0    | 0.0         | 0.0      | 8.7         | 9.0      |
|                   | Maximum          | 119.4       | 126.0    | 0.0         | 0.0      | -           | -        | -           | -        | -           | -        | -           | -        | 177.6       | 191.0    | 0.0         | 0.0      | 0.0         | 0.0      | 623.9       | 1,321.0  | 24.8        | 75.0     | 44.0        | 46.0     |
|                   | Average          | 42.1        | 44.8     | 0.0         | 0.0      | -           | -        | -           | -        | -           | -        | -           | -        | 120.0       | 126.8    | 0.0         | 0.0      | 0.0         | 0.0      | 398.2       | 555.4    | 2.6         | 12.1     | 15.0        | 16.7     |
| August 27, 2024   | Minimum          | 0.0         | 0.0      | 0.0         | 0.0      | 0.0         | 0.0      | -           | -        | -           | -        | -           | -        | 56.3        | 59.0     | 0.0         | 0.0      | 0.0         | 0.0      | 245.4       | 263.0    | 0.0         | 0.0      | 8.5         | 9.0      |
|                   | Maximum          | 143.2       | 170.0    | 0.0         | 0.0      | 0.0         | 0.0      | -           | -        | -           | -        | -           | -        | 183.8       | 188.0    | 0.0         | 0.0      | 0.0         | 0.0      | 810.6       | 1,849.0  | 48.1        | 110.0    | 40.0        | 42.0     |
|                   | Average          | 58.5        | 61.8     | 0.0         | 0.0      | -           | -        | -           | -        | -           | -        | -           | -        | 123.1       | 129.8    | 0.0         | 0.0      | 0.0         | 0.0      | 400.9       | 590.3    | 2.9         | 12.9     | 23.7        | 25.3     |
| August 28, 2024   | Minimum          | 0.0         | 0.0      | 0.0         | 0.0      | 0.0         | 0.0      | -           | -        | -           | -        | -           | -        | 59.4        | 60.0     | 0.0         | 0.0      | 0.0         | 0.0      | 313.9       | 350.0    | 0.0         | 0.0      | 6.0         | 8.0      |
|                   | Maximum          | 184.0       | 189.0    | 0.0         | 0.0      | 0.0         | 0.0      | -           | -        | -           | -        | -           | -        | 199.5       | 213.0    | 0.0         | 0.0      | 0.0         | 0.0      | 793.5       | 1,951.0  | 18.3        | 62.0     | 40.0        | 49.0     |
|                   | Average          | 74.0        | 77.3     | 0.0         | 0.0      | -           | -        | -           | -        | -           | -        | -           | -        | 135.7       | 141.4    | 0.0         | 0.0      | 0.0         | 0.0      | 429.2       | 621.3    | 1.3         | 6.9      | 24.2        | 26.6     |
| August 29, 2024   | Minimum          | 0.0         | 0.0      | 0.0         | 0.0      | 0.0         | 0.0      | -           | -        | -           | -        | -           | -        | 48.3        | 54.0     | 0.0         | 0.0      | 0.0         | 0.0      | 252.4       | 281.0    | 0.0         | 0.0      | 7.0         | 7.0      |
|                   | Maximum          | 205.4       | 212.0    | 0.0         | 0.0      | 0.0         | 0.0      | -           | -        | -           | -        | -           | -        | 199.0       | 213.0    | 0.0         | 0.0      | 0.0         | 0.0      | 745.6       | 2,091.0  | 32.7        | 105.0    | 39.5        | 41.0     |
|                   | Average          | 80.9        | 84.7     | 0.0         | 0.0      | -           | -        | -           | -        | -           | -        | -           | -        | 132.8       | 138.4    | 0.0         | 0.0      | 0.0         | 0.0      | 395.7       | 606.8    | 1.8         | 10.3     | 24.2        | 26.5     |
| August 30, 2024   | Minimum          | 0.0         | 0.0      | 0.0         | 0.0      | 0.0         | 0.0      | -           | -        | -           | -        | -           | -        | 7.5         | 23.0     | 0.0         | 0.0      | 0.0         | 0.0      | 204.8       | 237.0    | 0.0         | 0.0      | 9.8         | 10.0     |
|                   | Maximum          | 176.5       | 180.0    | 0.1         | 2.0      | 0.0         | 0.0      | -           | -        | -           | -        | -           | -        | 183.1       | 190.0    | 3.2         | 11.0     | 0.0         | 0.0      | 580.7       | 1,174.0  | 16.9        | 57.0     | 34.6        | 37.0     |
|                   | Average          | 73.3        | 79.0     | 0.0         | 0.0      | -           | -        | -           | -        | -           | -        | -           | -        | 120.0       | 126.1    | 0.0         | 0.1      | 0.0         | 0.0      | 403.3       | 547.6    | 1.8         | 8.5      | 20.4        | 22.3     |
| August 31, 2024   | Minimum          | 0.0         | 0.0      | 0.0         | 0.0      | 0.0         | 0.0      | -           | -        | -           | -        | -           | -        | 75.8        | 79.0     | 0.0         | 0.0      | 0.0         | 0.0      | 131.8       | 135.0    | 0.0         | 0.0      | 12.5        | 13.0     |
|                   | Maximum          | 195.7       | 198.0    | 0.1         | 1.0      | 0.0         | 0.0      | -           | -        | -           | -        | -           | -        | 165.9       | 176.0    | 0.3         | 2.0      | 0.0         | 0.0      | 569.2       | 1,890.0  | 19.3        | 66.0     | 38.0        | 42.0     |
|                   | Average          | 55.8        | 58.5     | 0.0         | 0.0      | -           | -        | -           | -        | -           | -        | -           | -        | 121.4       | 128.6    | 0.0         | 0.0      | 0.0         | 0.0      | 358.7       | 538.1    | 1.9         | 10.2     | 25.5        | 27.3     |
| September 1, 2024 | Minimum          | 0.0         | 0.0      | 0.0         | 0.0      | 0.0         | 0.0      | -           | -        | -           | -        | -           | -        | 579.5       | 610.0    | 0.0         | 0.0      | 0.0         | 0.0      | 322.6       | 327.0    | 0.0         | 0.0      | 18.5        | 19.0     |
|                   | Maximum          | 158.3       | 164.0    | 0.0         | 0.0      | 0.0         | 0.0      | -           | -        | -           | -        | -           | -        | 1,609.3     | 1,631.0  | 0.0         | 0.0      | 0.0         | 0.0      | 1,203.1     | 2,350.0  | 34.2        | 71.0     | 38.6        | 50.0     |
|                   | Average          | 94.2        | 101.9    | 0.0         | 0.0      | -           | -        | -           | -        | -           | -        | -           | -        | 1,040.8     | 1,063.3  | 0.0         | 0.0      | 0.0         | 0.0      | 432.7       | 657.6    | 2.3         | 10.5     | 28.0        | 30.4     |

**Notes:**

- Data records with a dash indicate no data is available for that interval.
- Calibration readings and data produced during periods of sensor downtime and/or maintenance are excluded from the report.
- Station 2 shut down on 7/30/2024 due to technical problems and is scheduled for maintenance.
- The CTair monitoring systems at each station are programmed to initiate benzene sampling when a TVOC reading of  $\geq 160$  ppb is measured. It has been observed that there are occurrences of TVOC readings  $\geq 160$  ppb where the benzene sampling was not initiated. The affected stations and periods are detailed in the monitoring systems daily reports. The equipment supplier has been notified of this issue and a corrective action will be implemented when provided.
- As discussed with the manufacturer of the H<sub>2</sub>S sensor, there is high likelihood that the H<sub>2</sub>S sensor has cross sensitivity with other sulfur compounds, including, but are not limited to, carbonyl sulfide, dimethyl sulfide, dimethyl disulfide, and methyl mercaptan. The potential for cross sensitivity with other reduced sulfur compounds must be considered when interpreting H<sub>2</sub>S levels recorded by the sensors.
- Station 3 recorded a TVOC event with a measured TVOC value of approximately 78,000 parts per billion (ppb) beginning at 1800 on 8/31/2024 through 0600 on 9/1/2024. This value affected the scaling of the TVOC graphs which resulted in no resolution for the TVOC data recorded at the Stations 1, 3, and 4 for the balance of this reporting period. As a result, the Station 3 TVOC event data has been excluded from this report to display meaningful data for Stations 1, 3, and 4. The complete Station 3 TVOC data for the period ending 9/1/2024 is presented separately.



## Perimeter Air Monitoring Weekly Report

Real-Time Multigas Monitoring  
Bristol Landfill Air Investigation

August 26 - September 1, 2024

| Date              | Daily Statistics | Bristol Met Station |                   |            |                   |              |
|-------------------|------------------|---------------------|-------------------|------------|-------------------|--------------|
|                   |                  | Wind Dir<br>degrees | Wind Speed<br>mph | Temp<br>°F | Rel Humidity<br>% | Baro<br>mbar |
| August 26, 2024   | Minimum          |                     | 0.0               | 60.8       | 38.9              | 955.1        |
|                   | Maximum          |                     | 6.0               | 88.3       | 92.5              | 959.3        |
|                   | Average          | 126.1               | 1.3               | 74.0       | 68.4              | 957.5        |
| August 27, 2024   | Minimum          |                     | 0.0               | 62.1       | 41.9              | 953.8        |
|                   | Maximum          |                     | 7.0               | 88.3       | 92.9              | 957.3        |
|                   | Average          | 147.7               | 1.4               | 74.8       | 69.9              | 955.7        |
| August 28, 2024   | Minimum          |                     | 0.0               | 62.5       | 41.1              | 952.9        |
|                   | Maximum          |                     | 10.0              | 90.2       | 94.0              | 956.4        |
|                   | Average          | 173.0               | 1.2               | 76.5       | 68.5              | 954.8        |
| August 29, 2024   | Minimum          |                     | 0.0               | 65.7       | 42.2              | 953.4        |
|                   | Maximum          |                     | 10.0              | 92.3       | 92.2              | 957.0        |
|                   | Average          | 160.3               | 1.2               | 78.3       | 69.8              | 955.2        |
| August 30, 2024   | Minimum          |                     | 0.0               | 67.6       | 40.9              | 951.6        |
|                   | Maximum          |                     | 47.0              | 92.1       | 88.6              | 956.4        |
|                   | Average          | 127.8               | 2.5               | 76.7       | 72.5              | 954.8        |
| August 31, 2024   | Minimum          |                     | 0.0               | 64.7       | 45.9              | 949.5        |
|                   | Maximum          |                     | 17.0              | 89.4       | 96.2              | 955.4        |
|                   | Average          | 142.6               | 2.2               | 73.3       | 80.0              | 953.3        |
| September 1, 2024 | Minimum          |                     | 0.0               | 66.4       | 70.2              | 949.8        |
|                   | Maximum          |                     | 9.0               | 78.8       | 97.3              | 953.1        |
|                   | Average          | 167.2               | 1.1               | 70.1       | 91.5              | 951.1        |

**Notes:**

- Dash/Blank data records indicate no data is available for that interval.
- Wind direction is a daily (24-hr) average value; with the origin of wind in degrees; clockwise from North calculated with vector averaging.