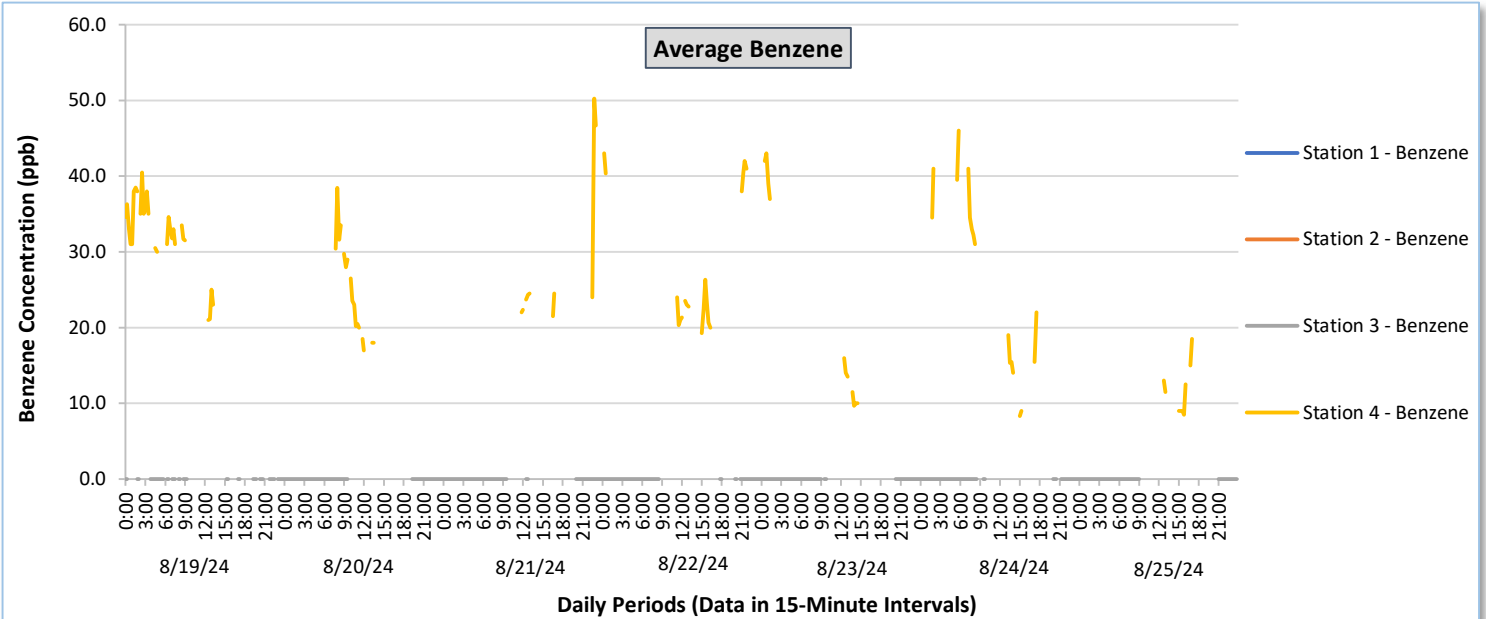
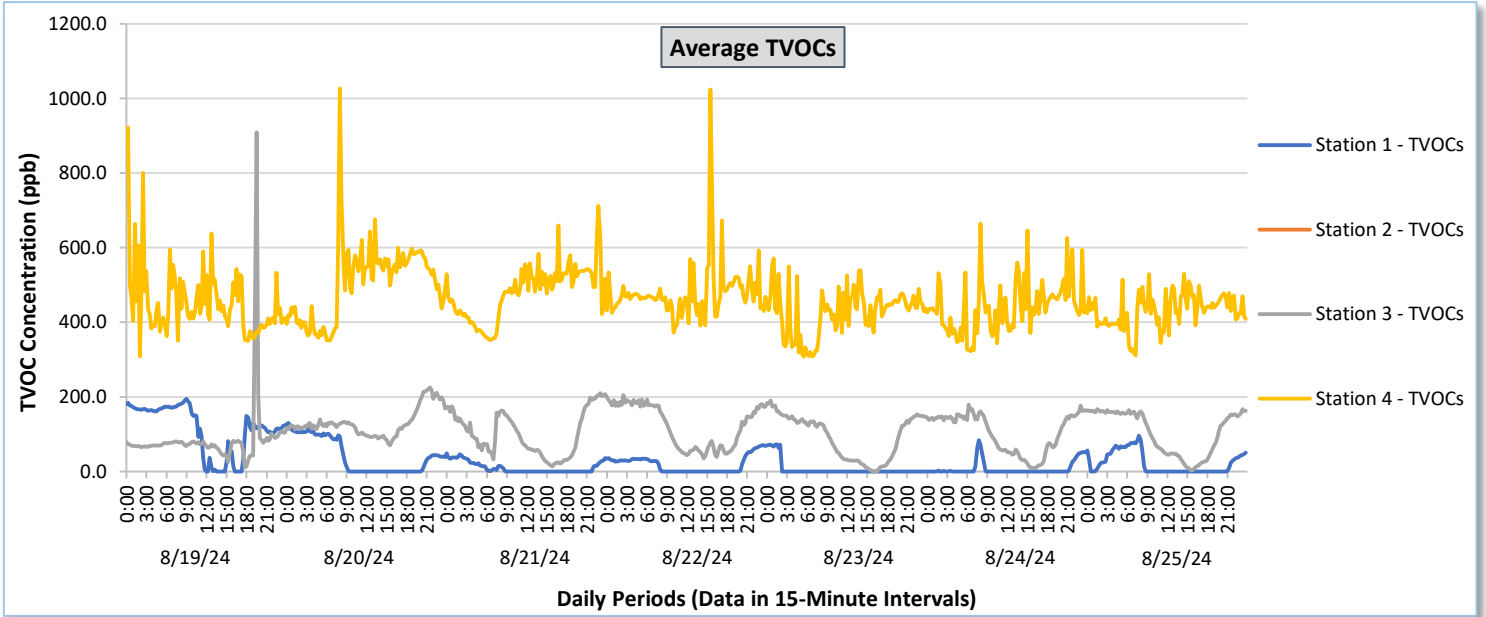




# Perimeter Air Monitoring Weekly Report

Real-Time Multigas Monitoring  
Bristol Landfill Air Investigation

August 19 - August 25, 2024

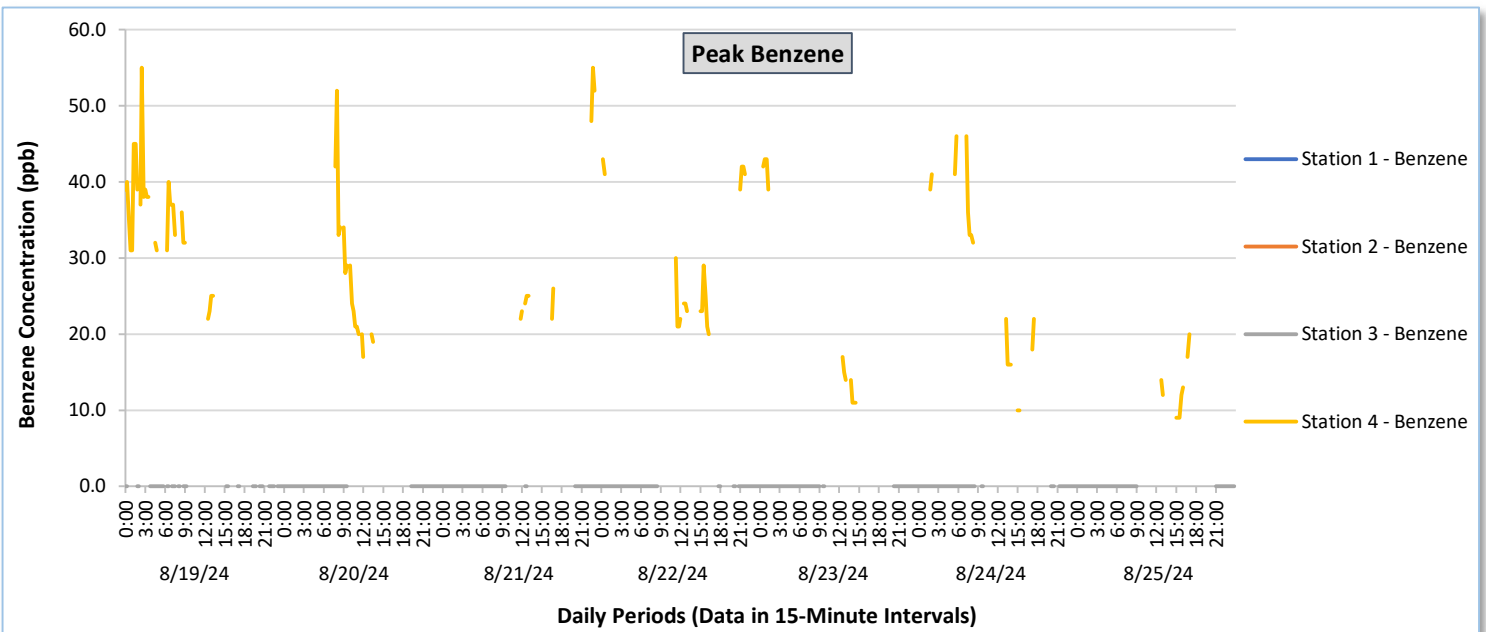
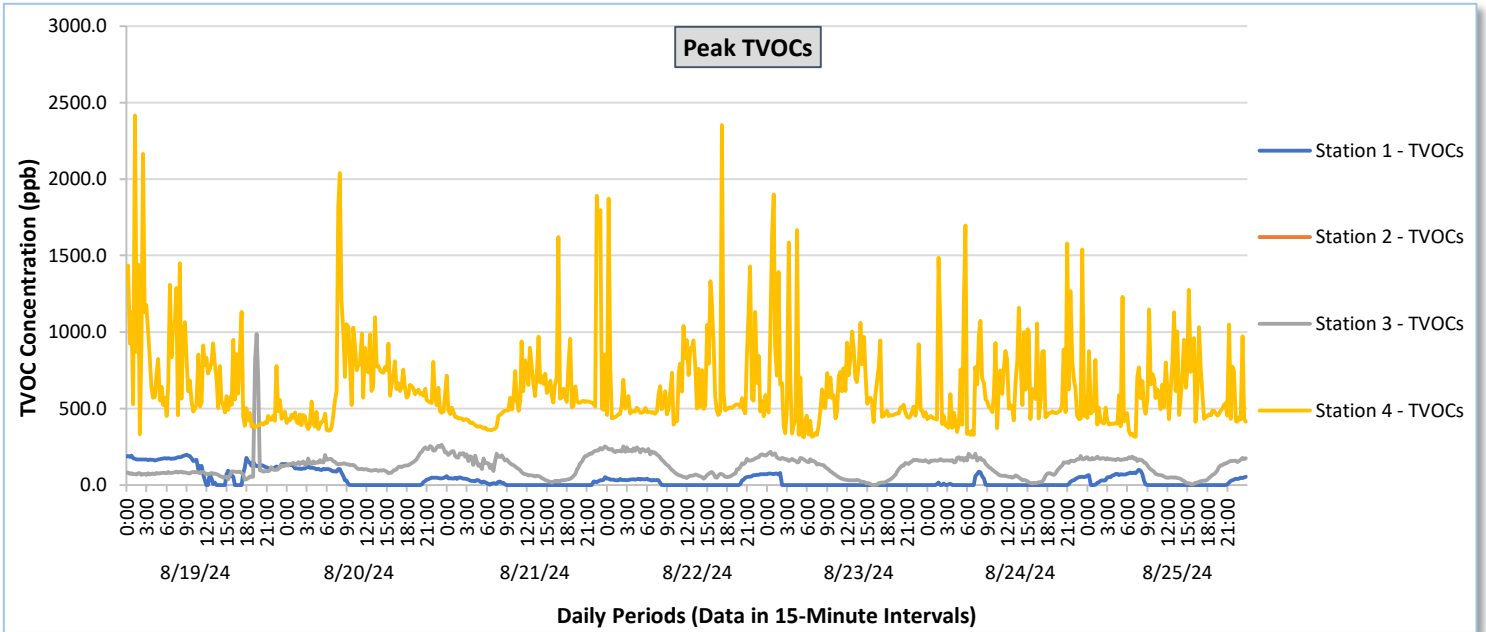




# Perimeter Air Monitoring Weekly Report

Real-Time Multigas Monitoring  
Bristol Landfill Air Investigation

August 19 - August 25, 2024

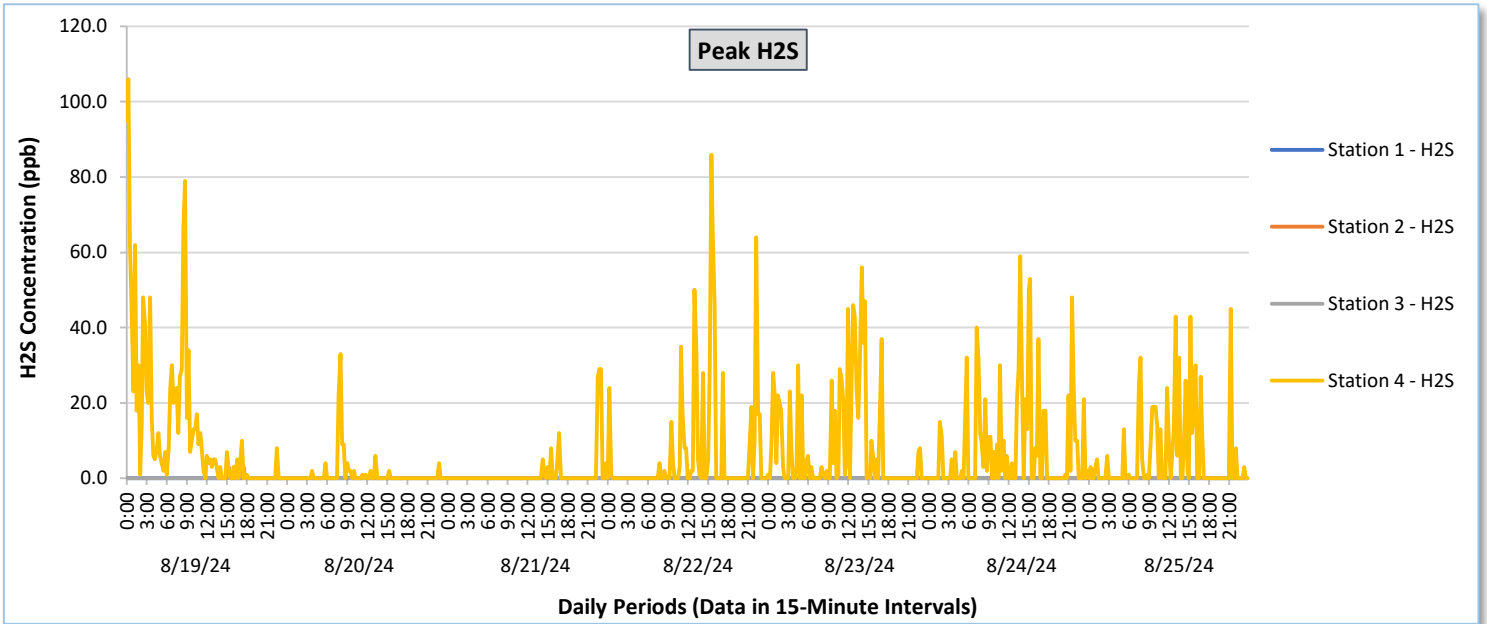
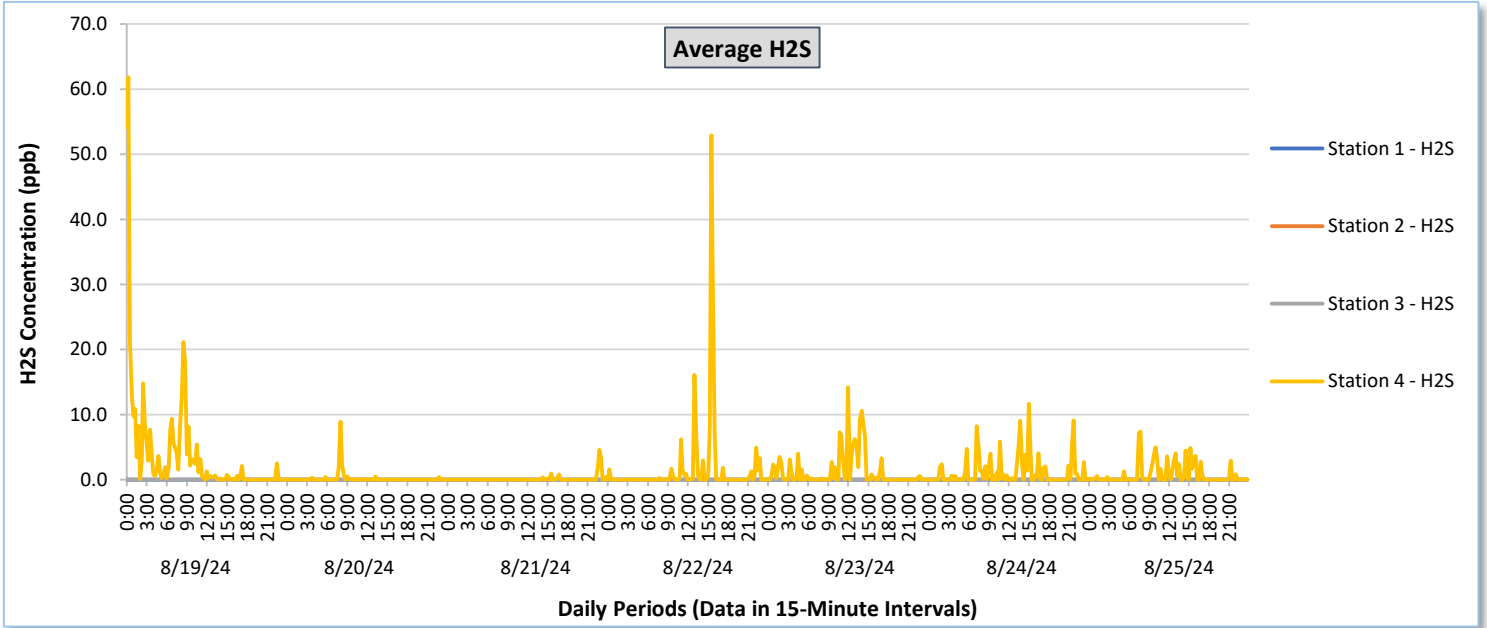




# Perimeter Air Monitoring Weekly Report

Real-Time Multigas Monitoring  
Bristol Landfill Air Investigation

August 19 - August 25, 2024





# Perimeter Air Monitoring Weekly Report

Real-Time Multigas Monitoring  
Bristol Landfill Air Investigation  
August 19 - August 25, 2024

Date	Daily Statistics	Station 1						Station 2						Station 3						Station 4					
		TVOCs		H2S		Benzene		TVOCs		H2S		Benzene		TVOCs		H2S		Benzene		TVOCs		H2S		Benzene	
		Average ppb	Peak ppb	Average ppb	Peak ppb	Average ppb	Peak ppb	Average ppb	Peak ppb	Average ppb	Peak ppb	Average ppb	Peak ppb	Average ppb	Peak ppb	Average ppb	Peak ppb	Average ppb	Peak ppb	Average ppb	Peak ppb	Average ppb	Peak ppb	Average ppb	Peak ppb
August 19, 2024	Minimum	0.0	0.0	0.0	0.0	0.0	0.0	-	-	-	-	-	-	11.8	35.0	0.0	0.0	0.0	0.0	308.9	332.0	0.0	0.0	16.0	17.0
	Maximum	194.5	199.0	0.2	3.0	0.0	0.0	-	-	-	-	-	-	908.7	987.0	0.3	3.0	0.0	0.0	921.5	2,416.0	61.8	106.0	40.5	55.0
	Average	113.7	121.7	0.0	0.0	-	-	-	-	-	-	-	-	85.2	102.8	0.0	0.1	0.0	0.0	455.5	720.9	3.9	13.1	30.7	33.3
August 20, 2024	Minimum	0.0	0.0	0.0	0.0	-	-	-	-	-	-	-	-	69.9	78.0	0.0	0.0	0.0	0.0	352.0	356.0	0.0	0.0	12.0	12.0
	Maximum	130.2	136.0	0.0	0.0	-	-	-	-	-	-	-	-	225.6	263.0	0.0	0.0	0.0	0.0	1,026.8	2,039.0	8.9	33.0	38.5	52.0
	Average	42.6	45.8	0.0	0.0	-	-	-	-	-	-	-	-	130.5	147.6	0.0	0.0	0.0	0.0	505.3	645.6	0.2	1.1	22.8	25.0
August 21, 2024	Minimum	0.0	0.0	0.0	0.0	-	-	-	-	-	-	-	-	14.1	16.0	0.0	0.0	0.0	0.0	352.7	359.0	0.0	0.0	21.5	22.0
	Maximum	48.9	57.0	0.0	0.0	-	-	-	-	-	-	-	-	210.4	252.0	0.0	0.0	0.0	0.0	711.7	1,891.0	4.6	29.0	50.3	55.0
	Average	10.3	12.7	0.0	0.0	-	-	-	-	-	-	-	-	102.0	128.8	0.0	0.0	0.0	0.0	481.3	598.5	0.1	1.3	29.2	32.5
August 22, 2024	Minimum	0.0	0.0	0.0	0.0	-	-	-	-	-	-	-	-	35.3	40.0	0.0	0.0	0.0	0.0	372.0	395.0	0.0	0.0	17.5	19.0
	Maximum	70.3	72.0	0.0	0.0	-	-	-	-	-	-	-	-	205.1	253.0	0.0	0.0	0.0	0.0	1,023.8	2,354.0	52.9	86.0	43.0	43.0
	Average	18.9	20.8	0.0	0.0	-	-	-	-	-	-	-	-	122.4	141.3	0.0	0.0	0.0	0.0	479.1	646.8	1.6	6.7	28.2	29.7
August 23, 2024	Minimum	0.0	0.0	0.0	0.0	-	-	-	-	-	-	-	-	0.0	0.0	0.0	0.0	0.0	0.0	307.9	312.0	0.0	0.0	9.7	11.0
	Maximum	72.7	80.0	0.0	0.0	-	-	-	-	-	-	-	-	190.7	216.0	0.0	0.0	0.0	0.0	570.9	1,898.0	14.3	56.0	43.0	43.0
	Average	6.5	7.0	0.0	0.0	-	-	-	-	-	-	-	-	93.3	104.4	0.0	0.0	0.0	0.0	427.0	622.9	1.3	8.6	24.4	26.4
August 24, 2024	Minimum	0.0	0.0	0.0	0.0	-	-	-	-	-	-	-	-	9.1	10.0	0.0	0.0	0.0	0.0	322.5	328.0	0.0	0.0	8.3	10.0
	Maximum	83.3	89.0	0.0	0.0	-	-	-	-	-	-	-	-	179.4	204.0	0.0	0.0	0.0	0.0	664.5	1,696.0	11.7	59.0	46.0	46.0
	Average	7.4	9.2	0.0	0.0	-	-	-	-	-	-	-	-	103.7	114.6	0.0	0.0	0.0	0.0	440.8	638.8	1.2	8.3	25.4	27.4
August 25, 2024	Minimum	0.0	0.0	0.0	0.0	-	-	-	-	-	-	-	-	2.5	4.0	0.0	0.0	0.0	0.0	311.2	316.0	0.0	0.0	8.5	9.0
	Maximum	96.1	100.0	0.0	0.0	-	-	-	-	-	-	-	-	166.6	185.0	0.0	0.0	0.0	0.0	530.1	1,275.0	7.4	45.0	38.5	39.0
	Average	21.9	24.3	0.0	0.0	-	-	-	-	-	-	-	-	105.4	112.6	0.0	0.0	0.0	0.0	431.1	585.7	0.8	5.8	21.1	22.5

**Notes:**

- Data records with a dash indicate no data is available for that interval.
- Calibration readings and data produced during sensor errors are excluded from the report.
- Station 2 shut down on 7/30/2024 due to technical problems and is scheduled for maintenance.
- The CTair monitoring systems at each station are programmed to initiate benzene sampling when a TVOC reading of  $\geq 160$  ppb is measured. It has been observed that there are occurrences of TVOC readings  $\geq 160$  ppb where the benzene sampling was not initiated. The affected stations and periods are detailed in the monitoring systems daily reports. The equipment manufacturer is actively working to resolve this issue.
- As discussed with the manufacturer of the H2S sensor, there is high likelihood that the H2S sensor has cross sensitivity with other sulfur compounds. Other sulfur compounds include, but are not limited to, carbonyl sulfide, dimethyl sulfide, dimethyl disulfide, and methyl mercaptan.



## Perimeter Air Monitoring Weekly Report

Real-Time Multigas Monitoring  
Bristol Landfill Air Investigation

August 19 - August 25, 2024

Date	Daily Statistics	Bristol Met Station				
		Wind Dir degrees	Wind Speed mph	Temp °F	Rel Humidity %	Baro mbar
August 19, 2024	Minimum		0.0	65.0	63.8	946.4
	Maximum		10.0	77.8	97.4	950.4
	Average	223.5	1.6	69.1	87.3	947.6
August 20, 2024	Minimum		0.0	54.5	53.1	949.6
	Maximum		14.0	71.9	95.5	955.0
	Average	222.6	2.1	63.0	74.5	952.0
August 21, 2024	Minimum		0.0	49.1	40.0	953.6
	Maximum		9.0	75.4	93.9	956.2
	Average	136.2	2.3	61.6	68.1	955.0
August 22, 2024	Minimum		0.0	54.9	45.3	955.4
	Maximum		6.0	79.1	81.9	957.9
	Average	129.6	1.5	65.6	67.8	956.5
August 23, 2024	Minimum		0.0	57.6	36.6	957.4
	Maximum		7.0	82.7	92.0	960.5
	Average	129.3	1.4	69.1	68.4	958.6
August 24, 2024	Minimum		0.0	57.0	37.9	956.4
	Maximum		7.0	83.9	94.0	960.2
	Average	155.7	1.2	70.8	68.7	958.2
August 25, 2024	Minimum		0.0	60.0	33.3	956.6
	Maximum		8.0	87.9	92.8	960.3
	Average	143.7	1.4	73.2	66.6	958.1

**Notes:**

- Dash/Blank data records indicate no data is available for that interval.
- Wind direction is a daily (24-hr) average value; with the origin of wind in degrees; clockwise from North calculated with vector averaging.