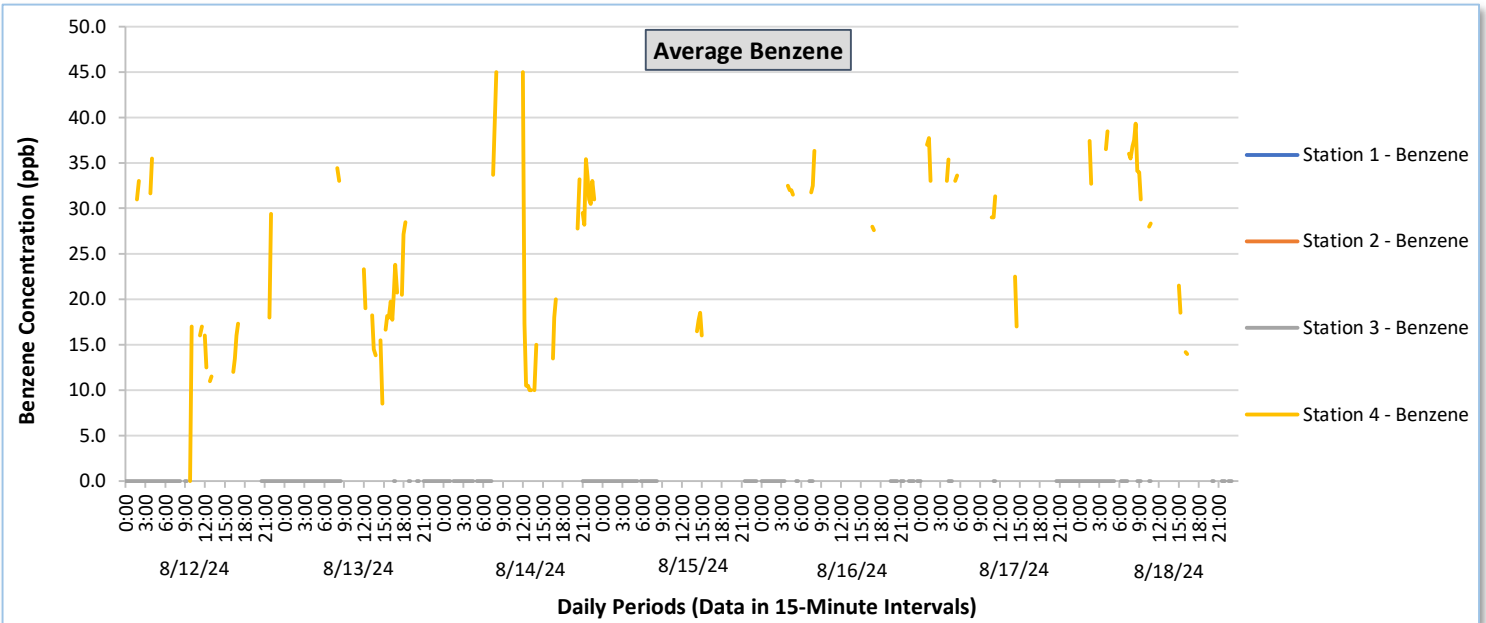
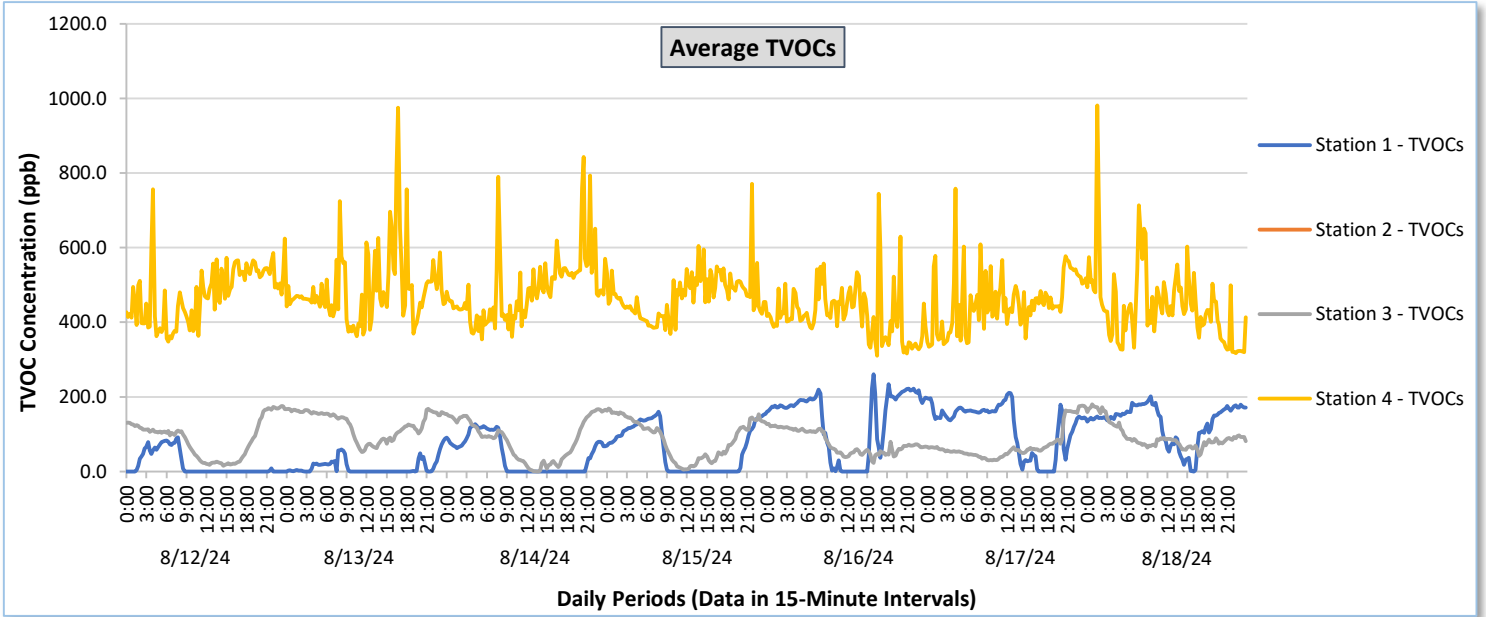




Perimeter Air Monitoring Weekly Report

Real-Time Multigas Monitoring
Bristol Landfill Air Investigation

August 12 - August 18, 2024

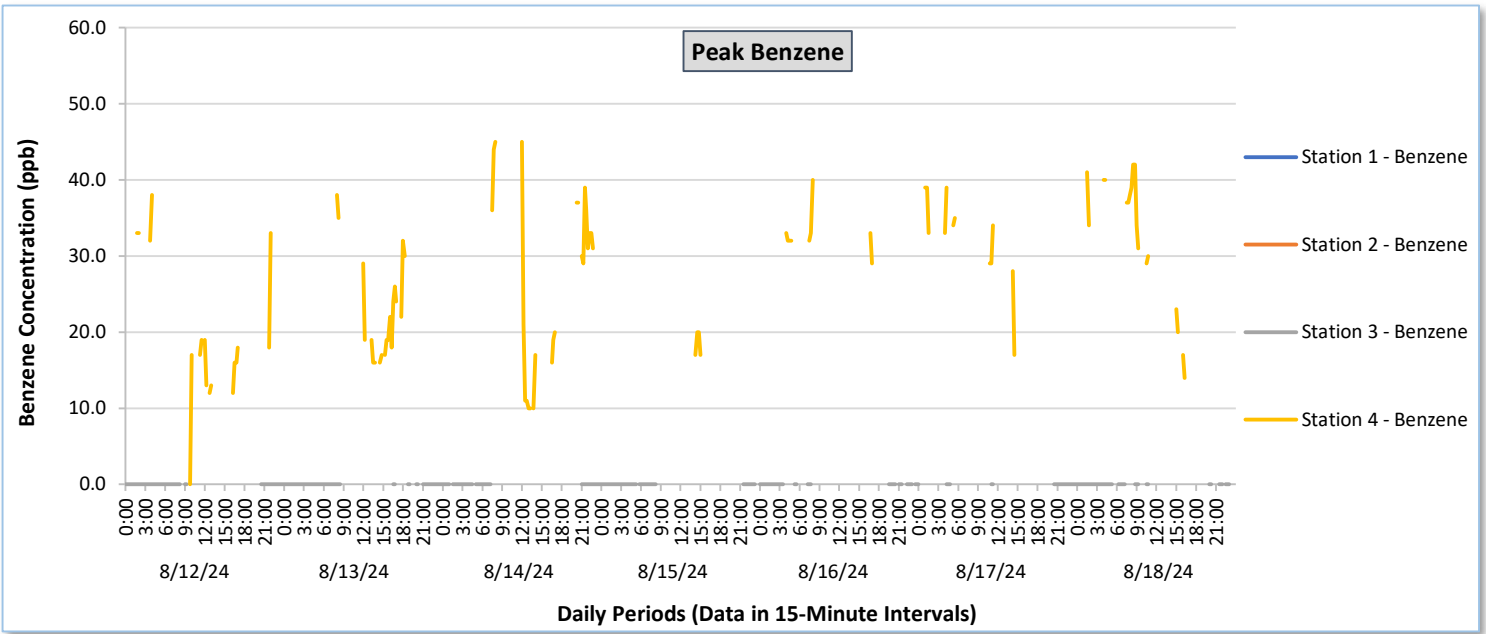
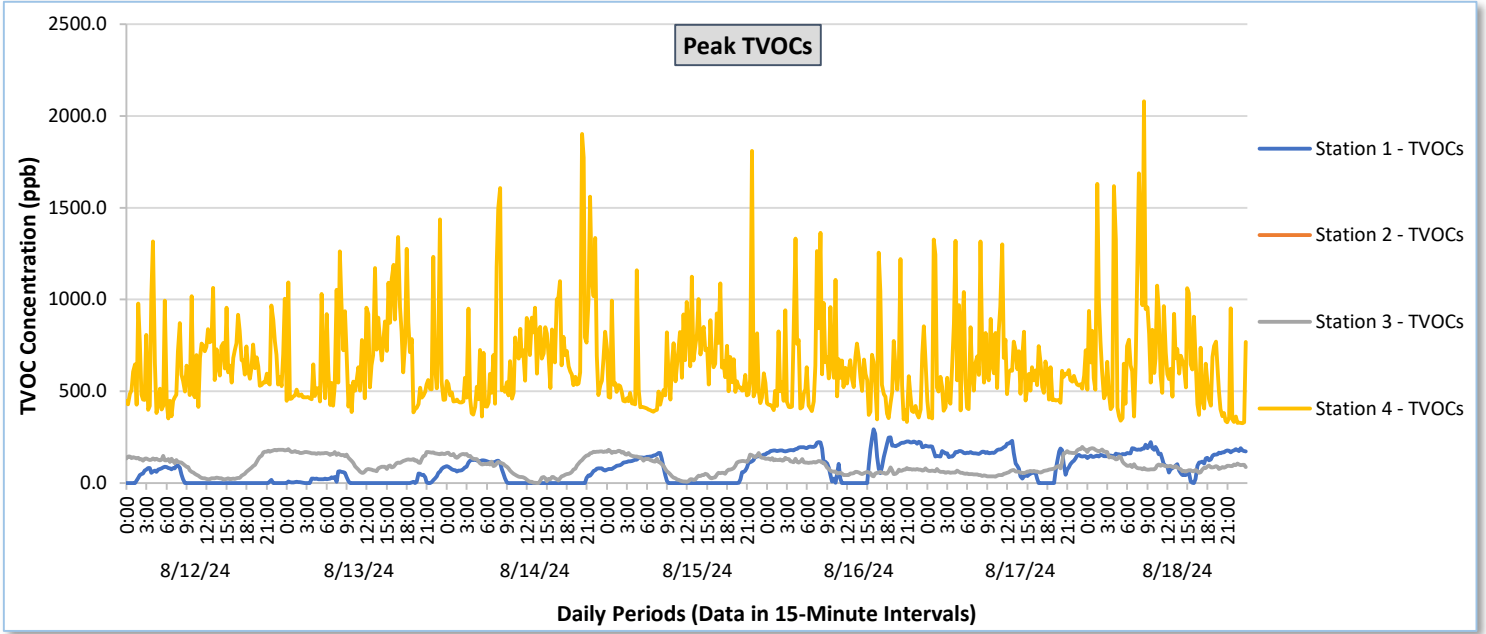




Perimeter Air Monitoring Weekly Report

Real-Time Multigas Monitoring
Bristol Landfill Air Investigation

August 12 - August 18, 2024

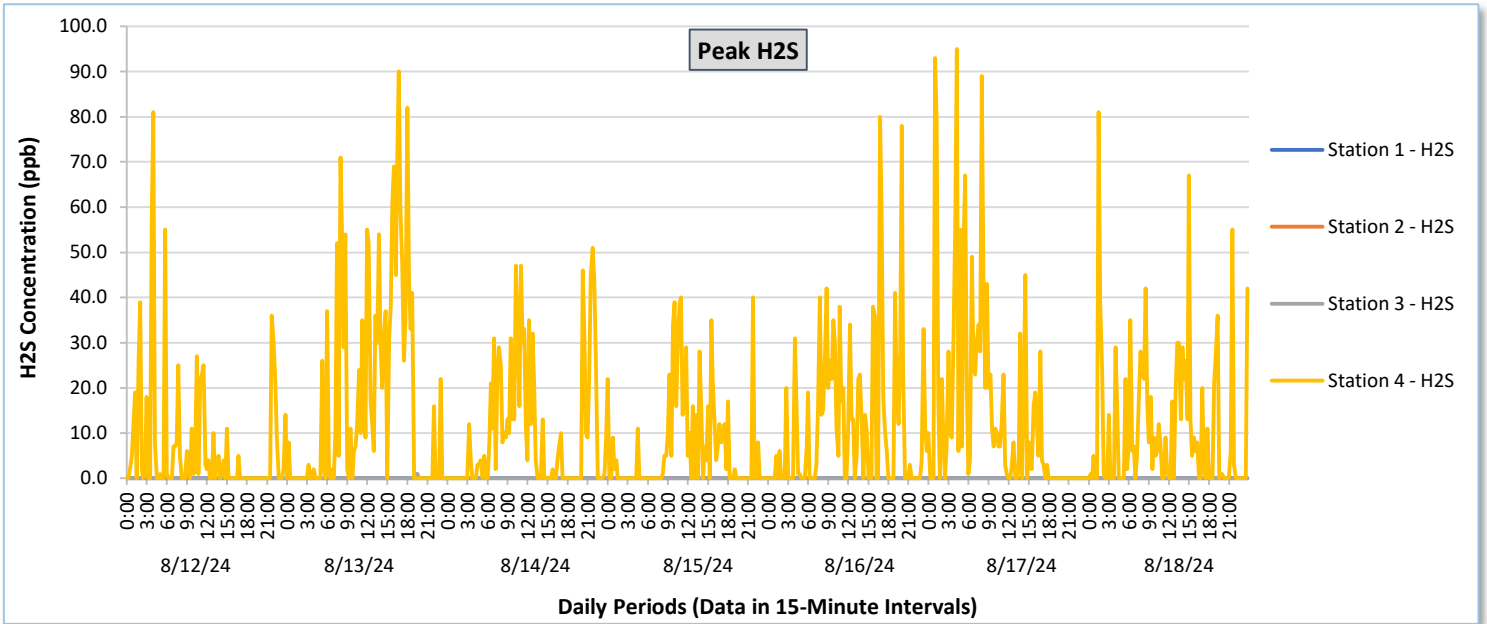
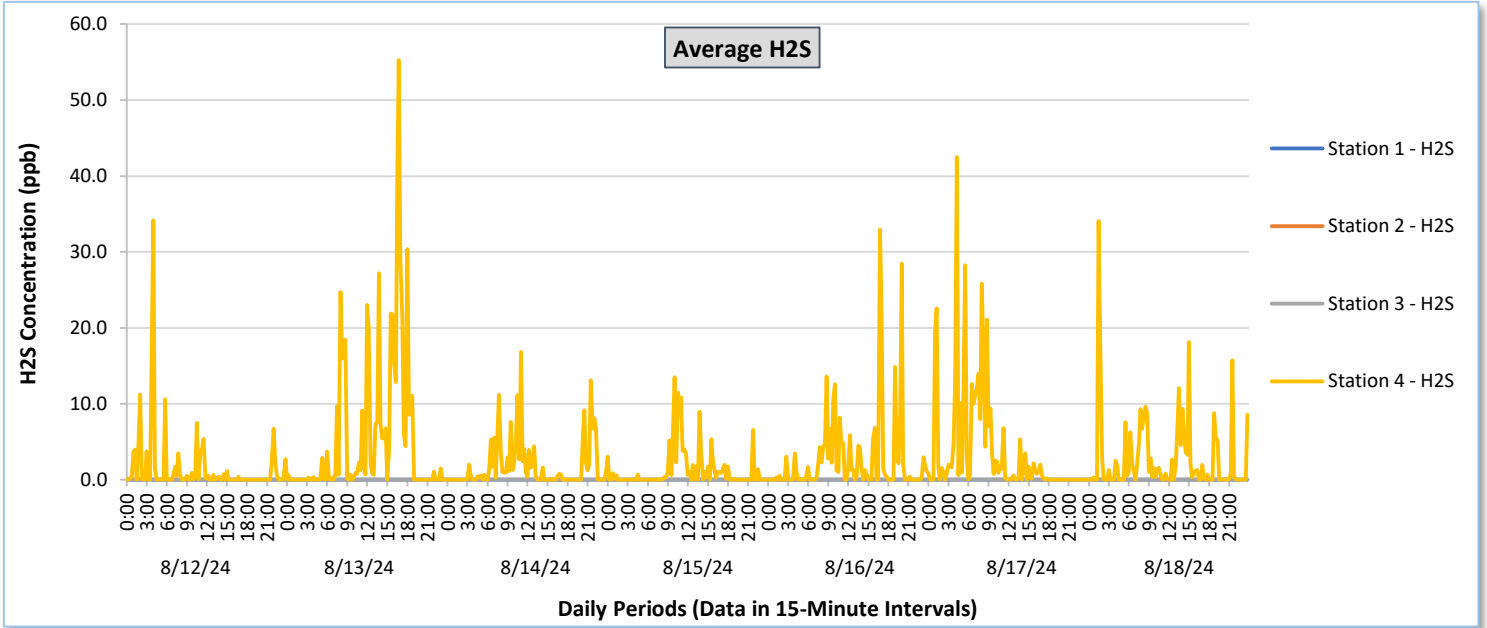




Perimeter Air Monitoring Weekly Report

Real-Time Multigas Monitoring
Bristol Landfill Air Investigation

August 12 - August 18, 2024





Perimeter Air Monitoring Weekly Report

Real-Time Multigas Monitoring
Bristol Landfill Air Investigation
August 12 - August 18, 2024

Date	Daily Statistics	Station 1						Station 2						Station 3						Station 4					
		TVOCs		H2S		Benzene		TVOCs		H2S		Benzene		TVOCs		H2S		Benzene		TVOCs		H2S		Benzene	
		Average ppb	Peak ppb	Average ppb	Peak ppb	Average ppb	Peak ppb	Average ppb	Peak ppb	Average ppb	Peak ppb	Average ppb	Peak ppb	Average ppb	Peak ppb	Average ppb	Peak ppb	Average ppb	Peak ppb	Average ppb	Peak ppb	Average ppb	Peak ppb	Average ppb	Peak ppb
August 12, 2024	Minimum	0.0	0.0	0.0	0.0	-	-	-	-	-	-	-	-	15.7	18.0	0.0	0.0	0.0	0.0	348.1	351.0	0.0	0.0	0.0	0.0
	Maximum	91.6	96.0	0.0	0.0	-	-	-	-	-	-	-	-	175.2	181.0	0.0	0.0	0.0	0.0	756.3	1,316.0	34.1	81.0	35.5	38.0
	Average	18.3	20.8	0.0	0.0	-	-	-	-	-	-	-	-	88.4	97.0	0.0	0.0	0.0	0.0	476.4	641.4	1.5	6.9	20.6	21.7
August 13, 2024	Minimum	0.0	0.0	0.0	0.0	-	-	-	-	-	-	-	-	52.3	54.0	0.0	0.0	0.0	0.0	362.8	385.0	0.0	0.0	8.5	16.0
	Maximum	87.7	89.0	0.0	0.0	-	-	-	-	-	-	-	-	167.5	184.0	0.1	1.0	0.0	0.0	974.9	1,435.0	55.3	90.0	36.0	38.0
	Average	12.5	15.0	0.0	0.0	-	-	-	-	-	-	-	-	126.1	132.0	0.0	0.0	0.0	0.0	488.8	677.9	5.4	17.6	23.8	25.9
August 14, 2024	Minimum	0.0	0.0	0.0	0.0	-	-	-	-	-	-	-	-	0.0	0.0	0.0	0.0	0.0	0.0	354.1	362.0	0.0	0.0	10.0	10.0
	Maximum	126.5	128.0	0.0	0.0	-	-	-	-	-	-	-	-	166.8	172.0	0.0	0.0	0.0	0.0	842.5	1,901.0	16.8	51.0	45.0	45.0
	Average	42.7	44.8	0.0	0.0	-	-	-	-	-	-	-	-	85.4	91.1	0.0	0.0	0.0	0.0	487.3	708.7	1.8	9.8	25.6	27.2
August 15, 2024	Minimum	0.0	0.0	0.0	0.0	0.0	0.0	-	-	-	-	-	-	5.0	7.0	0.0	0.0	0.0	0.0	369.1	388.0	0.0	0.0	12.5	13.0
	Maximum	160.3	163.0	0.0	0.0	0.0	0.0	-	-	-	-	-	-	168.4	181.0	0.0	0.0	0.0	0.0	770.3	1,810.0	13.5	40.0	33.7	49.0
	Average	60.7	63.3	0.0	0.0	-	-	-	-	-	-	-	-	88.6	95.7	0.0	0.0	0.0	0.0	470.6	617.6	1.3	6.9	20.1	22.4
August 16, 2024	Minimum	0.0	0.0	0.0	0.0	0.0	0.0	-	-	-	-	-	-	23.1	36.0	0.0	0.0	-	-	309.9	333.0	0.0	0.0	17.0	18.0
	Maximum	260.8	293.0	0.0	0.0	0.0	0.0	-	-	-	-	-	-	127.9	138.0	0.0	0.0	-	-	744.0	1,363.0	32.9	80.0	37.0	40.0
	Average	135.5	145.5	0.0	0.0	-	-	-	-	-	-	-	-	77.4	83.5	0.0	0.0	-	-	422.6	599.9	2.7	12.0	30.1	32.1
August 17, 2024	Minimum	0.0	0.0	0.0	0.0	0.0	0.0	-	-	-	-	-	-	30.3	34.0	0.0	0.0	0.0	0.0	334.3	352.0	0.0	0.0	13.5	14.0
	Maximum	211.3	231.0	0.0	0.0	0.0	0.0	-	-	-	-	-	-	176.3	196.0	0.0	0.0	0.0	0.0	757.8	1,326.0	42.5	95.0	37.8	39.0
	Average	119.6	127.7	0.0	0.0	-	-	-	-	-	-	-	-	70.2	75.7	0.0	0.0	0.0	0.0	454.0	632.2	3.8	14.7	30.6	32.2
August 18, 2024	Minimum	0.0	0.0	0.0	0.0	0.0	0.0	-	-	-	-	-	-	42.2	57.0	0.0	0.0	0.0	0.0	316.9	325.0	0.0	0.0	14.0	14.0
	Maximum	202.0	223.0	0.0	0.0	0.0	0.0	-	-	-	-	-	-	180.0	190.0	0.0	0.0	0.0	0.0	981.0	2,080.0	34.1	81.0	39.3	42.0
	Average	131.6	139.4	0.0	0.0	-	-	-	-	-	-	-	-	94.2	102.6	0.0	0.0	0.0	0.0	444.2	672.8	2.7	11.0	29.5	31.7

Notes:

- Data records with a dash indicate no data is available for that interval.
- Calibration readings and data produced during sensor errors are excluded from the report.
- Station 2 shut down on 7/30/2024 due to technical problems and is scheduled for maintenance.
- The CTair monitoring systems at each station are programmed to initiate benzene sampling when a TVOC reading of ≥ 160 ppb is measured. It has been observed that there are occurrences of TVOC readings ≥ 160 ppb where the benzene sampling was not initiated. The affected stations and periods are detailed in the monitoring systems daily reports. The equipment manufacturer is actively working to resolve this issue.
- As discussed with the manufacturer of the H2S sensor, there is high likelihood that the H2S sensor has cross sensitivity with other sulfur compounds. Other sulfur compounds include, but are not limited to, carbonyl sulfide, dimethyl sulfide, dimethyl disulfide, and methyl mercaptan.



Perimeter Air Monitoring Weekly Report

Real-Time Multigas Monitoring
Bristol Landfill Air Investigation

August 12 - August 18, 2024

Date	Daily Statistics	Bristol Met Station				
		Wind Dir degrees	Wind Speed mph	Temp °F	Rel Humidity %	Baro mbar
August 12, 2024	Minimum		0.0	58.6	45.3	951.7
	Maximum		8.0	81.5	92.6	954.0
	Average	121.4	1.6	70.1	69.5	952.7
August 13, 2024	Minimum		0.0	65.1	53.9	951.6
	Maximum		8.0	80.6	80.6	953.7
	Average	111.3	1.7	72.7	67.7	952.5
August 14, 2024	Minimum		0.0	62.7	36.7	952.3
	Maximum		7.0	84.9	91.3	954.6
	Average	106.6	1.5	73.4	65.8	953.2
August 15, 2024	Minimum		0.0	62.5	49.9	951.3
	Maximum		8.0	85.1	88.9	954.9
	Average	151.3	1.3	73.5	70.8	953.0
August 16, 2024	Minimum		0.0	66.9	63.4	948.9
	Maximum		17.0	83.0	95.5	953.2
	Average	173.4	2.0	72.6	82.8	951.5
August 17, 2024	Minimum		0.0	66.6	62.1	946.5
	Maximum		18.0	82.5	97.1	951.4
	Average	206.2	1.6	72.1	85.4	949.4
August 18, 2024	Minimum		0.0	63.6	69.1	945.0
	Maximum		10.0	78.7	96.3	948.4
	Average	206.1	1.8	68.6	89.2	946.8

Notes:

- Dash/Blank data records indicate no data is available for that interval.
- Wind direction is a daily (24-hr) average value; with the origin of wind in degrees; clockwise from North calculated with vector averaging.