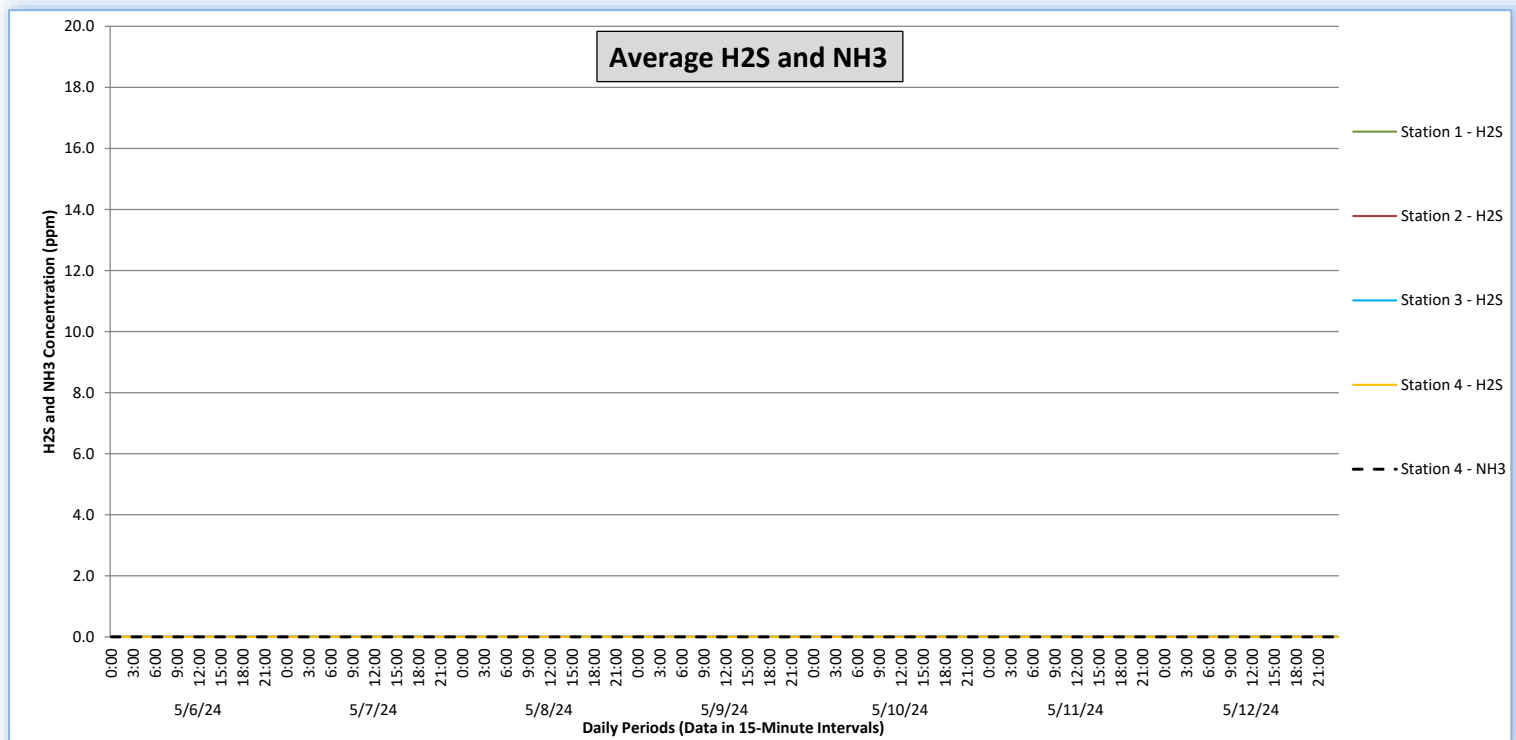
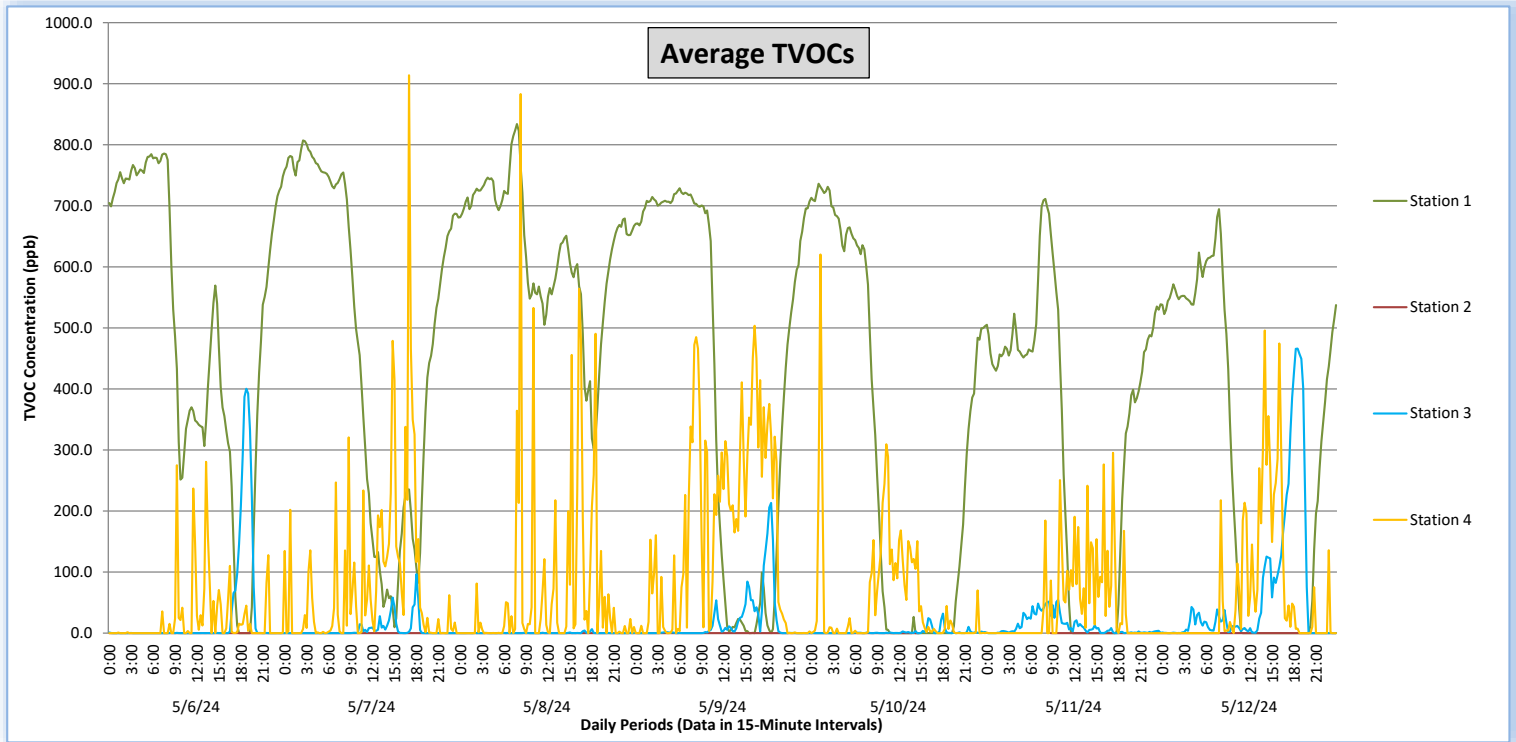


Perimeter Air Monitoring Weekly Report

Real-Time Multigas Monitoring
Bristol Landfill Air Investigation

May 6 - May 12, 2024



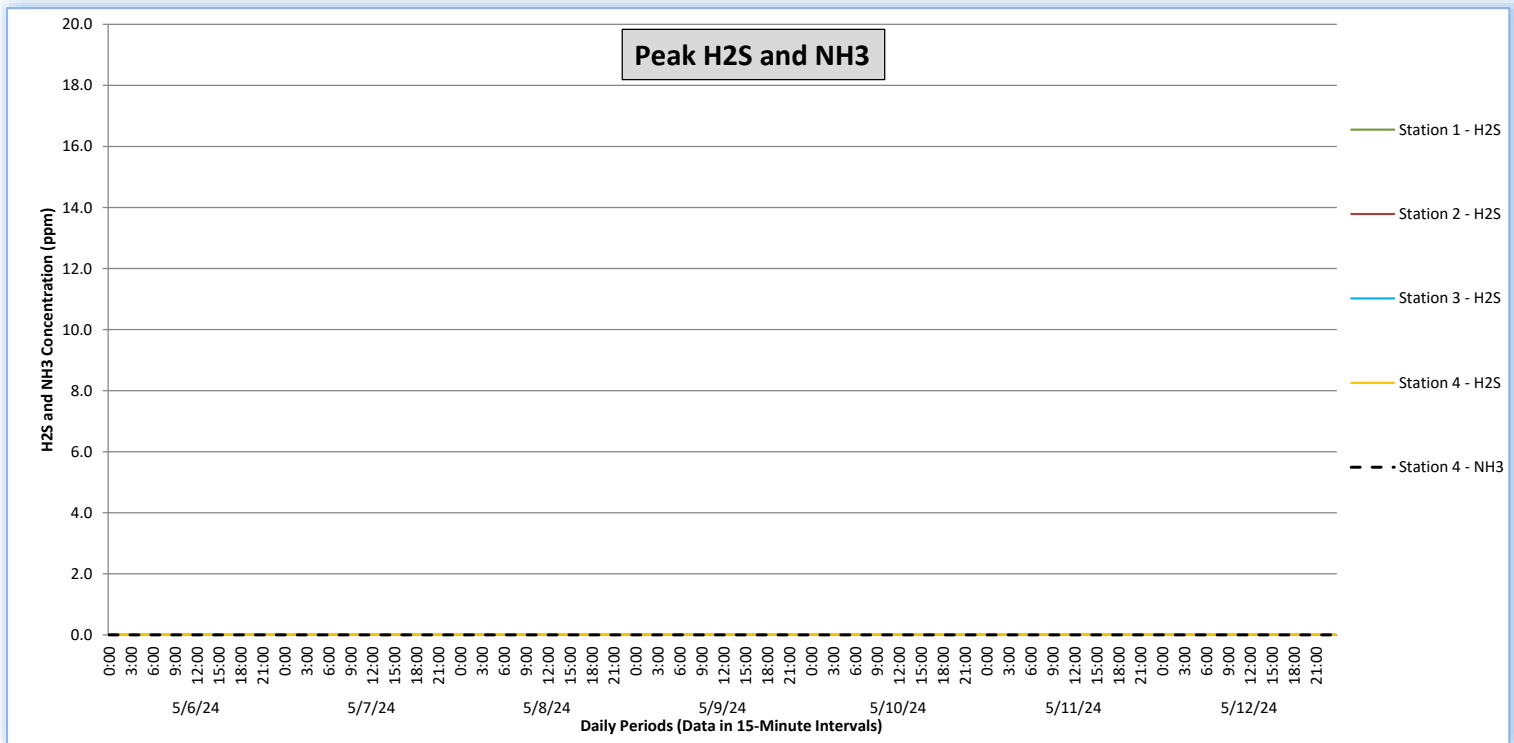
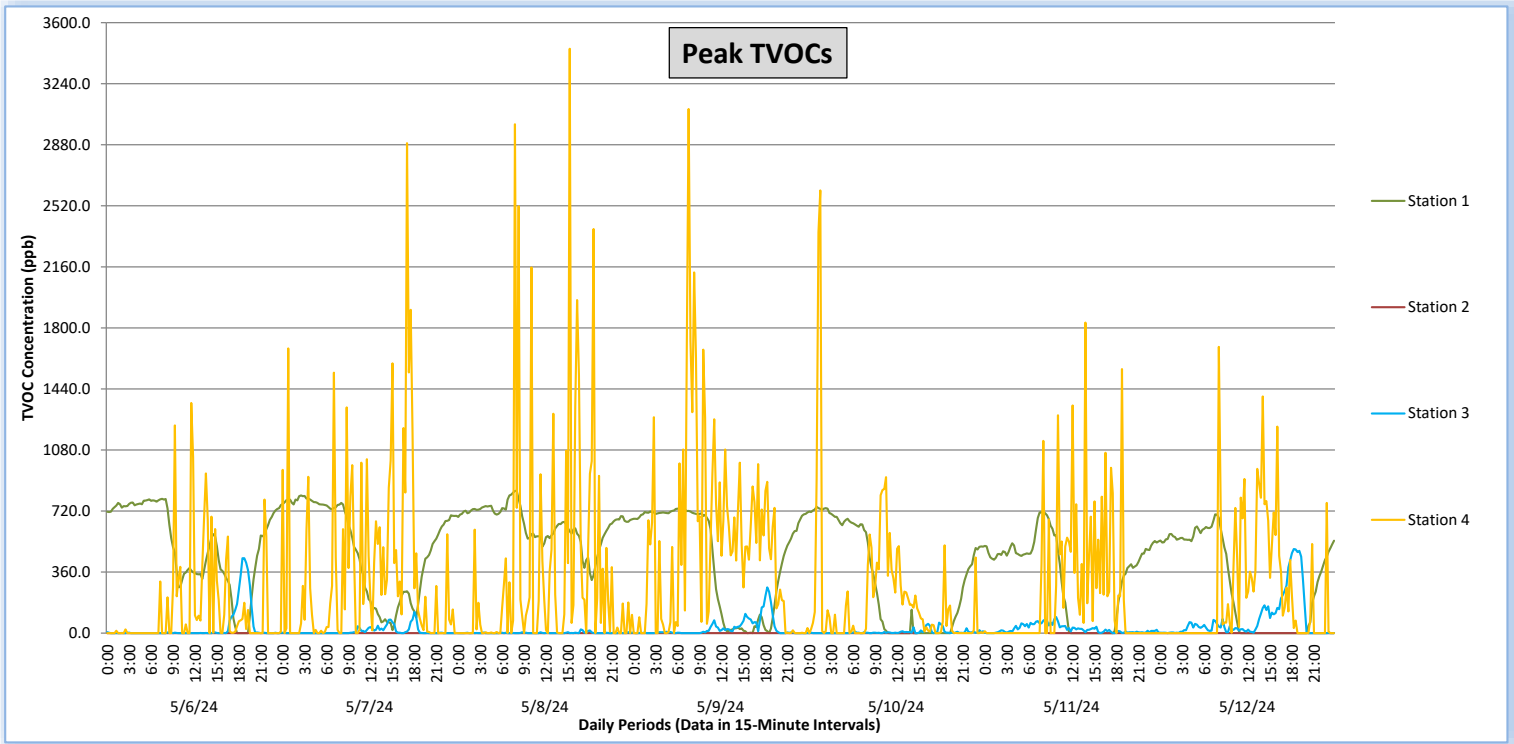
Perimeter Air Monitoring Weekly Report



Real-Time Multigas Monitoring
Bristol Landfill Air Investigation



May 6 - May 12, 2024





Perimeter Air Monitoring Weekly Report

Real-Time Multigas Monitoring Bristol Landfill Air Investigation



May 6 - May 12, 2024

| Date | Daily Statistics | Station 1 | | | | Station 2 | | | | Station 3 | | | | Station 4 | | | | | |
|--------------|------------------|---------------------------------|---|---------------------------------|---|---------------------------------|---|---------------------------------|---|---------------------------------|---|---------------------------------|---|---------------------------------|---|---------------------------------|---|---------------------------------|---|
| | | TVOCs | | H2S | | TVOCs | | H2S | | TVOCs | | H2S | | TVOCs | | H2S | | NH3 | |
| | | Average ppb | Peak ppb | Average ppm | Peak ppm | Average ppb | Peak ppb | Average ppm | Peak ppm | Average ppb | Peak ppb | Average ppm | Peak ppm | Average ppb | Peak ppb | Average ppm | Peak ppm | Average ppm | Peak ppm |
| | | Values from 15-minute intervals | 1-minute max within each 15-minute interval | Values from 15-minute intervals | 1-minute max within each 15-minute interval | Values from 15-minute intervals | 1-minute max within each 15-minute interval | Values from 15-minute intervals | 1-minute max within each 15-minute interval | Values from 15-minute intervals | 1-minute max within each 15-minute interval | Values from 15-minute intervals | 1-minute max within each 15-minute interval | Values from 15-minute intervals | 1-minute max within each 15-minute interval | Values from 15-minute intervals | 1-minute max within each 15-minute interval | Values from 15-minute intervals | 1-minute max within each 15-minute interval |
| May 6, 2024 | Minimum | 0 | 0 | 0.0 | 0.0 | 0 | 0 | 0.0 | 0.0 | 0 | 0 | 0.0 | 0.0 | 0 | 0 | 0.0 | 0.0 | 0 | 0 |
| | Maximum | 786 | 792 | 0.0 | 0.0 | 0 | 0 | 0.0 | 0.0 | 400 | 442 | 0.0 | 0.0 | 281 | 1,357 | 0.0 | 0.0 | 0 | 0 |
| | Average | 506 | 521 | 0.0 | 0.0 | 0 | 0 | 0.0 | 0.0 | 29 | 35 | 0.0 | 0.0 | 23 | 140 | 0.0 | 0.0 | 0 | 0 |
| May 7, 2024 | Minimum | 10 | 18 | 0.0 | 0.0 | 0 | 0 | 0.0 | 0.0 | 0 | 0 | 0.0 | 0.0 | 0 | 0 | 0.0 | 0.0 | 0 | 0 |
| | Maximum | 807 | 812 | 0.0 | 0.0 | 0 | 0 | 0.0 | 0.0 | 97 | 125 | 0.0 | 0.0 | 914 | 2,889 | 0.0 | 0.0 | 0 | 0 |
| | Average | 488 | 500 | 0.0 | 0.0 | 0 | 0 | 0.0 | 0.0 | 6 | 12 | 0.0 | 0.0 | 85 | 374 | 0.0 | 0.0 | 0 | 0 |
| May 8, 2024 | Minimum | 302 | 313 | 0.0 | 0.0 | 0 | 0 | 0.0 | 0.0 | 0 | 0 | 0.0 | 0.0 | 0 | 0 | 0.0 | 0.0 | 0 | 0 |
| | Maximum | 834 | 839 | 0.0 | 0.0 | 0 | 0 | 0.0 | 0.0 | 7 | 22 | 0.0 | 0.0 | 883 | 3,446 | 0.0 | 0.0 | 0 | 0 |
| | Average | 626 | 637 | 0.0 | 0.0 | 0 | 0 | 0.0 | 0.0 | 0 | 2 | 0.0 | 0.0 | 70 | 359 | 0.0 | 0.0 | 0 | 0 |
| May 9, 2024 | Minimum | 0 | 0 | 0.0 | 0.0 | 0 | 0 | 0.0 | 0.0 | 0 | 0 | 0.0 | 0.0 | 0 | 0 | 0.0 | 0.0 | 0 | 0 |
| | Maximum | 729 | 734 | 0.0 | 0.0 | 0 | 0 | 0.0 | 0.0 | 213 | 270 | 0.0 | 0.0 | 503 | 3,091 | 0.0 | 0.0 | 0 | 0 |
| | Average | 434 | 445 | 0.0 | 0.0 | 0 | 0 | 0.0 | 0.0 | 19 | 29 | 0.0 | 0.0 | 157 | 506 | 0.0 | 0.0 | 0 | 0 |
| May 10, 2024 | Minimum | 0 | 0 | 0.0 | 0.0 | 0 | 0 | 0.0 | 0.0 | 0 | 0 | 0.0 | 0.0 | 0 | 0 | 0.0 | 0.0 | 0 | 0 |
| | Maximum | 736 | 745 | 0.0 | 0.0 | 0 | 0 | 0.0 | 0.0 | 32 | 62 | 0.0 | 0.0 | 620 | 2,611 | 0.0 | 0.0 | 0 | 0 |
| | Average | 306 | 316 | 0.0 | 0.0 | 0 | 0 | 0.0 | 0.0 | 2 | 7 | 0.0 | 0.0 | 54 | 207 | 0.0 | 0.0 | 0 | 0 |
| May 11, 2024 | Minimum | 0 | 0 | 0.0 | 0.0 | 0 | 0 | 0.0 | 0.0 | 0 | 0 | 0.0 | 0.0 | 0 | 0 | 0.0 | 0.0 | 0 | 0 |
| | Maximum | 711 | 714 | 0.0 | 0.0 | 0 | 0 | 0.0 | 0.0 | 55 | 95 | 0.0 | 0.0 | 295 | 1,831 | 0.0 | 0.0 | 0 | 0 |
| | Average | 330 | 341 | 0.0 | 0.0 | 0 | 0 | 0.0 | 0.0 | 12 | 24 | 0.0 | 0.0 | 42 | 229 | 0.0 | 0.0 | 0 | 0 |
| May 12, 2024 | Minimum | 0 | 0 | 0.0 | 0.0 | 0 | 0 | 0.0 | 0.0 | 0 | 0 | 0.0 | 0.0 | 0 | 0 | 0.0 | 0.0 | 0 | 0 |
| | Maximum | 695 | 700 | 0.0 | 0.0 | 0 | 0 | 0.0 | 0.0 | 466 | 496 | 0.0 | 0.0 | 496 | 1,688 | 0.0 | 0.0 | 0 | 0 |
| | Average | 282 | 292 | 0.0 | 0.0 | 0 | 0 | 0.0 | 0.0 | 65 | 83 | 0.0 | 0.0 | 62 | 227 | 0.0 | 0.0 | 0 | 0 |

Notes:

- Dash/Blank data records indicate no data is available for that interval
- Calibration readings and data produced during sensor errors are excluded from the report

Perimeter Air Monitoring Weekly Report



Real-Time Multigas Monitoring Bristol Landfill Air Investigation



May 6 - May 12, 2024

| Date | Daily Statistics | Bristol Met Station 1 | | | | | Bristol Met Station 2 | | | | |
|--------------|------------------|-----------------------|-------------------|------------|---------|--------------|-----------------------|-------------------|------------|---------|--------------|
| | | Wind Dir degrees | Wind Speed mph | Temp °F | RH % | Baro mbar | Wind Dir degrees | Wind Speed mph | Temp °F | RH % | Baro mbar |
| May 6, 2024 | Minimum | | 0.1 | 59.3 | 64.7 | 944.5 | | 0.1 | 59.5 | 64.8 | 947.4 |
| | Maximum | | 2.5 | 74.9 | 95.8 | 949.3 | | 6.4 | 74.2 | 90.0 | 952.2 |
| | Average | 215 | 1.0 | 65.7 | 85.7 | 947.1 | 359 | 1.3 | 65.0 | 82.3 | 950.2 |
| May 7, 2024 | Minimum | | 0.1 | 58.8 | 66.4 | 940.5 | | 0.2 | 59.3 | 67.4 | 943.4 |
| | Maximum | | 2.6 | 79.9 | 96.0 | 945.3 | | 3.9 | 78.7 | 90.0 | 948.2 |
| | Average | 259 | 0.9 | 70.9 | 82.4 | 942.7 | 313 | 1.2 | 67.7 | 82.5 | 946.0 |
| May 8, 2024 | Minimum | | 0.1 | 60.7 | 88.1 | 941.0 | | 0.1 | 60.9 | 82.3 | 944.0 |
| | Maximum | | 4.1 | 70.0 | 96.0 | 945.1 | | 3.8 | 70.0 | 89.0 | 948.0 |
| | Average | 338 | 1.0 | 66.1 | 92.3 | 942.7 | 324 | 1.1 | 66.4 | 86.3 | 945.5 |
| May 9, 2024 | Minimum | | 0.1 | 62.1 | 63.8 | 937.7 | | 0.5 | 59.4 | 64.2 | 940.6 |
| | Maximum | | 3.5 | 75.8 | 96.3 | 940.9 | | 6.6 | 75.2 | 90.0 | 947.9 |
| | Average | 278 | 1.3 | 70.4 | 77.1 | 939.1 | 311 | 2.2 | 66.1 | 80.2 | 942.9 |
| May 10, 2024 | Minimum | | 0.1 | 50.5 | 53.0 | 938.9 | | 0.5 | 51.5 | 52.7 | 941.5 |
| | Maximum | | 5.0 | 70.5 | 93.0 | 944.1 | | 6.2 | 70.0 | 85.0 | 947.0 |
| | Average | 346 | 2.0 | 61.8 | 71.3 | 941.0 | 291 | 2.3 | 61.8 | 73.4 | 943.3 |
| May 11, 2024 | Minimum | | 0.2 | 46.5 | 50.6 | 940.9 | | 0.3 | 43.3 | 53.5 | 943.7 |
| | Maximum | | 3.5 | 66.9 | 94.6 | 944.8 | | 5.0 | 65.8 | 89.0 | 947.7 |
| | Average | 299 | 1.1 | 57.7 | 77.0 | 943.2 | 307 | 2.1 | 54.6 | 77.6 | 946.3 |
| May 12, 2024 | Minimum | | 0.1 | 47.8 | 32.9 | 943.9 | | 0.2 | 45.0 | 33.3 | 946.7 |
| | Maximum | | 3.0 | 75.0 | 95.0 | 947.8 | | 4.0 | 74.2 | 90.0 | 950.6 |
| | Average | 0 | 1.0 | 63.6 | 58.4 | 946.1 | 297 | 1.5 | 59.1 | 65.6 | 948.6 |

Notes:

- Dash/Blank data records indicate no data is available for that interval
- Wind direction is a daily (24-hr) average value; with the origin of wind in degrees; clockwise from North calculated with vector averaging