

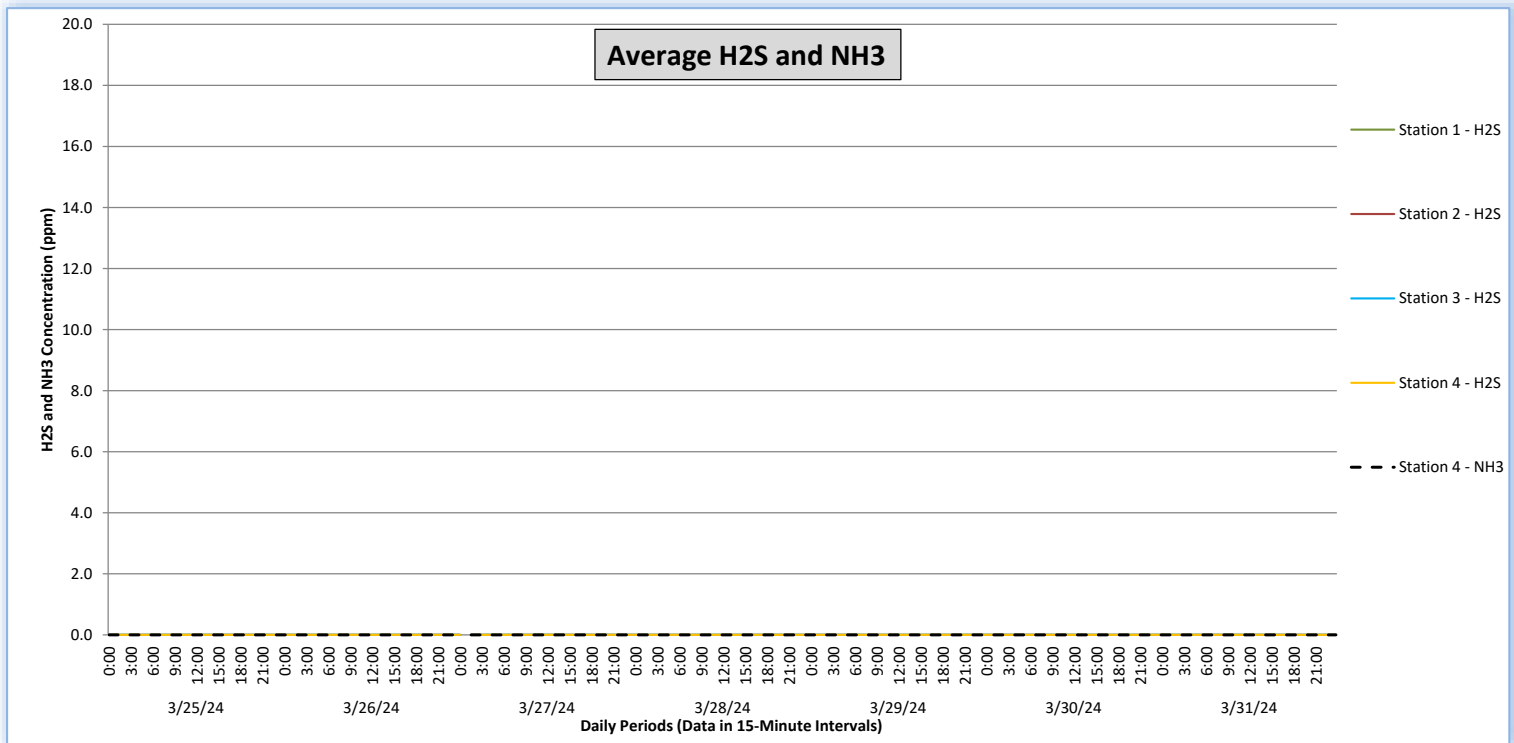
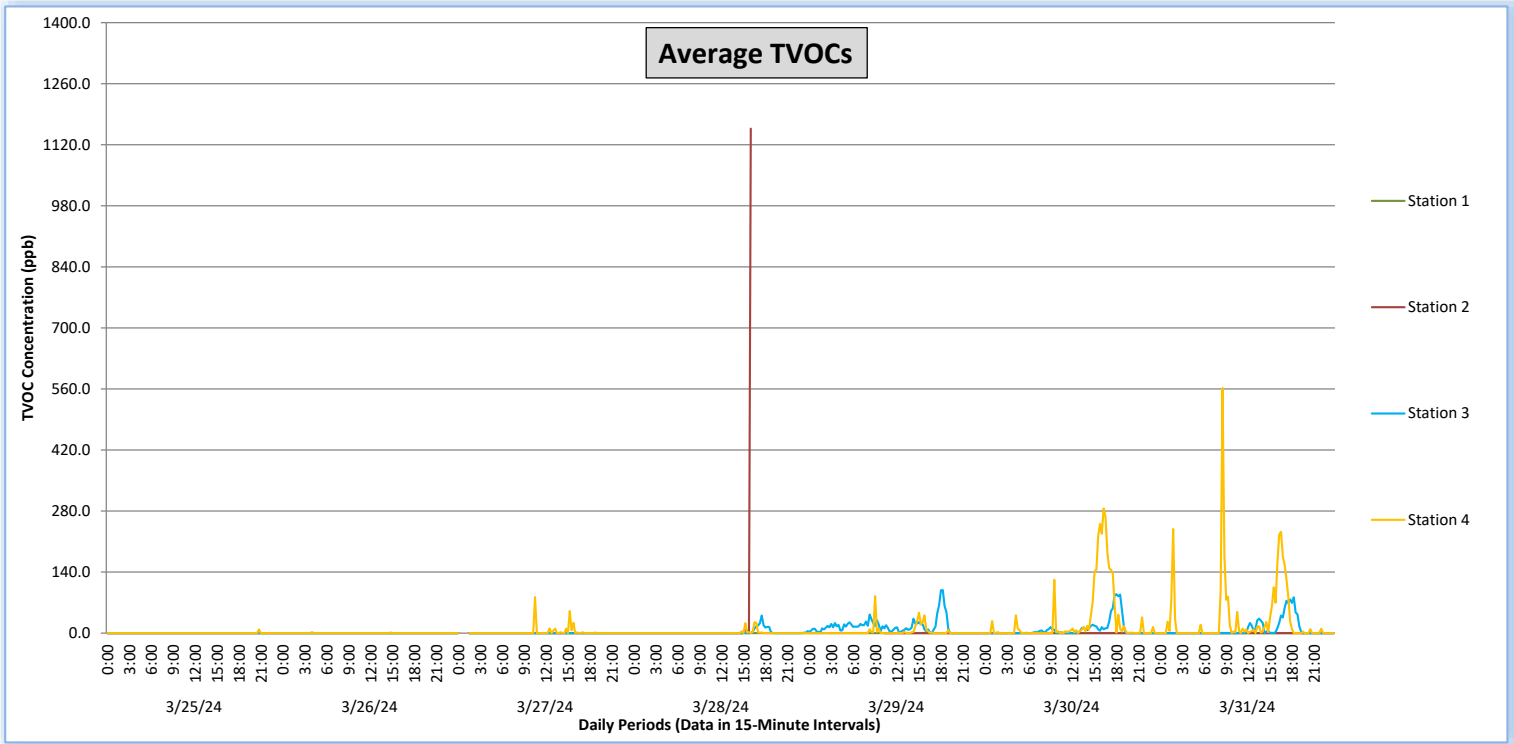
Perimeter Air Monitoring Weekly Report



Real-Time Multigas Monitoring
Bristol Landfill Air Investigation



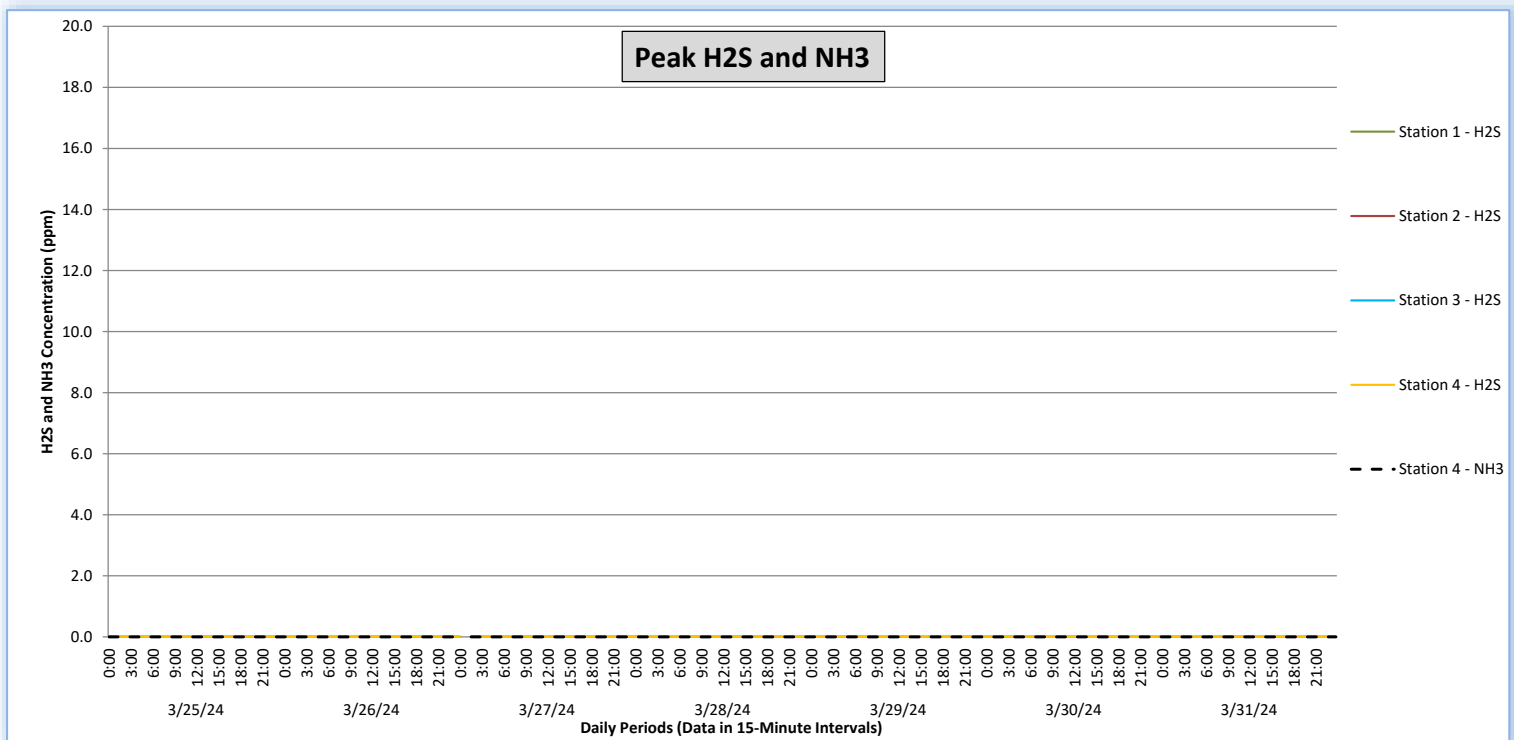
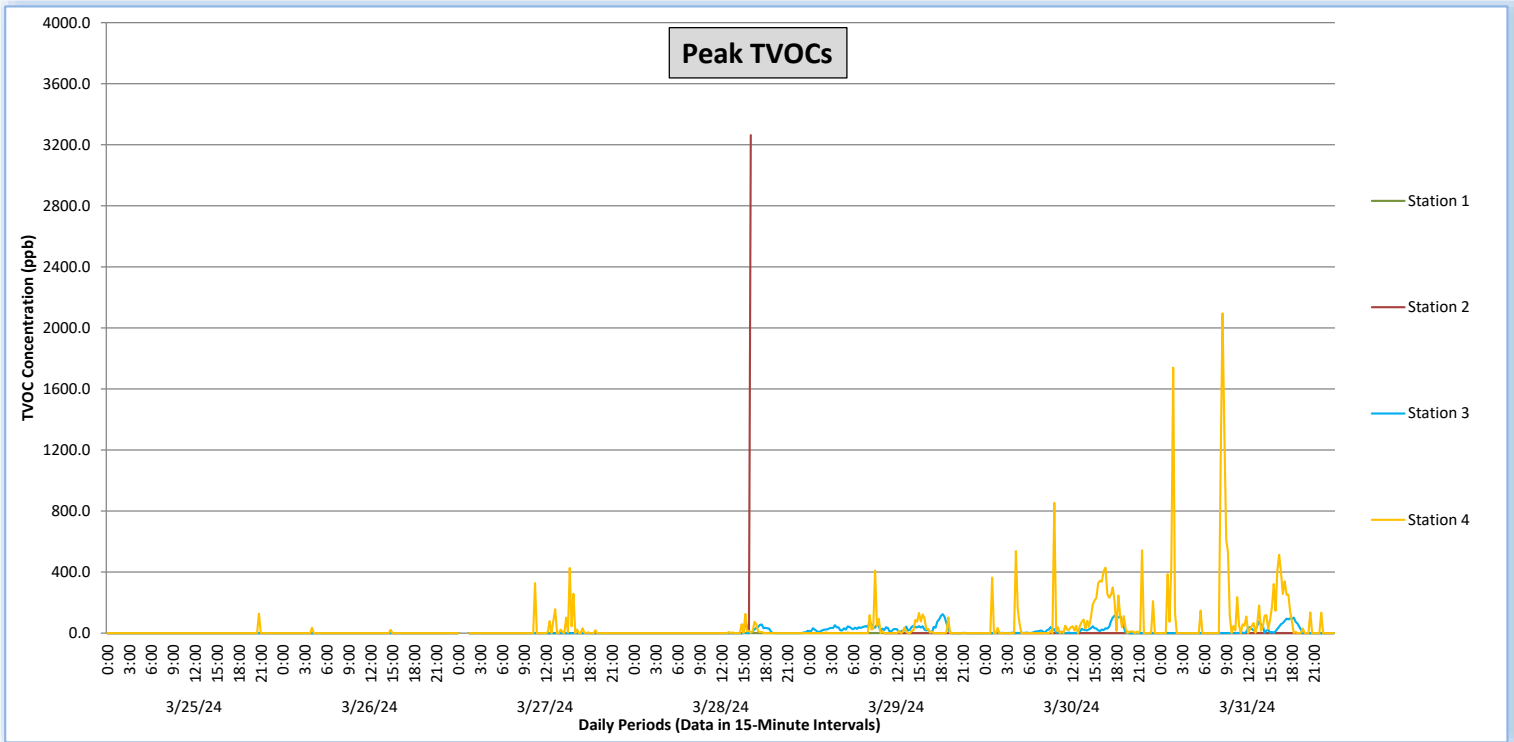
March 25 - March 31, 2024



Perimeter Air Monitoring Weekly Report

Real-Time Multigas Monitoring
Bristol Landfill Air Investigation

March 25 - March 31, 2024





Perimeter Air Monitoring Weekly Report

Real-Time Multigas Monitoring Bristol Landfill Air Investigation



March 25 - March 31, 2024

Date	Daily Statistics	Station 1				Station 2				Station 3				Station 4					
		TVOCs		H2S		TVOCs		H2S		TVOCs		H2S		TVOCs		H2S		NH3	
		Average ppb	Peak ppb	Average ppm	Peak ppm	Average ppb	Peak ppb	Average ppm	Peak ppm	Average ppb	Peak ppb	Average ppm	Peak ppm	Average ppb	Peak ppb	Average ppm	Peak ppm	Average ppm	Peak ppm
		Values from 15-minute intervals	1-minute max within each 15-minute interval	Values from 15-minute intervals	1-minute max within each 15-minute interval	Values from 15-minute intervals	1-minute max within each 15-minute interval	Values from 15-minute intervals	1-minute max within each 15-minute interval	Values from 15-minute intervals	1-minute max within each 15-minute interval	Values from 15-minute intervals	1-minute max within each 15-minute interval	Values from 15-minute intervals	1-minute max within each 15-minute interval	Values from 15-minute intervals	1-minute max within each 15-minute interval	Values from 15-minute intervals	1-minute max within each 15-minute interval
March 25, 2024	Minimum	0	0	0.0	0.0	0	0	0.0	0.0	0	0	0.0	0.0	0	0	0.0	0.0	0	0
	Maximum	0	0	0.0	0.0	0	0	0.0	0.0	0	0	0.0	0.0	9	128	0.0	0.0	0	0
	Average	0	0	0.0	0.0	0	0	0.0	0.0	0	0	0.0	0.0	0	1	0.0	0.0	0	0
March 26, 2024	Minimum	0	0	0.0	0.0	0	0	0.0	0.0	0	0	0.0	0.0	0	0	0.0	0.0	0	0
	Maximum	0	0	0.0	0.0	0	0	0.0	0.0	0	0	0.0	0.0	2	35	0.0	0.0	0	0
	Average	0	0	0.0	0.0	0	0	0.0	0.0	0	0	0.0	0.0	0	1	0.0	0.0	0	0
March 27, 2024	Minimum	0	0	0.0	0.0	0	0	0.0	0.0	0	0	0.0	0.0	0	0	0.0	0.0	0	0
	Maximum	0	0	0.0	0.0	0	0	0.0	0.0	0	0	0.0	0.0	83	427	0.0	0.0	0	0
	Average	0	0	0.0	0.0	0	0	0.0	0.0	0	0	0.0	0.0	2	18	0.0	0.0	0	0
March 28, 2024	Minimum	0	0	0.0	0.0	0	0	0.0	0.0	0	0	0.0	0.0	0	0	0.0	0.0	0	0
	Maximum	0	0	0.0	0.0	1,157	3,263	0.0	0.0	40	57	0.0	0.0	25	126	0.0	0.0	0	0
	Average	0	0	0.0	0.0	18	52	0.0	0.0	2	4	0.0	0.0	1	4	0.0	0.0	0	0
March 29, 2024	Minimum	0	0	0.0	0.0	0	0	0.0	0.0	0	0	0.0	0.0	0	0	0.0	0.0	0	0
	Maximum	0	0	0.0	0.0	0	0	0.0	0.0	99	124	0.0	0.0	85	410	0.0	0.0	0	0
	Average	0	0	0.0	0.0	0	0	0.0	0.0	15	28	0.0	0.0	3	17	0.0	0.0	0	0
March 30, 2024	Minimum	0	0	0.0	0.0	0	0	0.0	0.0	0	0	0.0	0.0	0	0	0.0	0.0	0	0
	Maximum	0	0	0.0	0.0	0	0	0.0	0.0	89	115	0.0	0.0	286	854	0.0	0.0	0	0
	Average	0	0	0.0	0.0	0	0	0.0	0.0	9	15	0.0	0.0	29	82	0.0	0.0	0	0
March 31, 2024	Minimum	0	0	0.0	0.0	0	0	0.0	0.0	0	0	0.0	0.0	0	0	0.0	0.0	0	0
	Maximum	0	0	0.0	0.0	0	0	0.0	0.0	82	102	0.0	0.0	562	2,095	0.0	0.0	0	0
	Average	0	0	0.0	0.0	0	0	0.0	0.0	9	15	0.0	0.0	32	142	0.0	0.0	0	0

Notes:

- Dash/Blank data records indicate no data is available for that interval
- Calibration readings and data produced during sensor errors are excluded from the report
- The Station 2 VOC spike at 16:00 on March 28, 2024 is the reading from a calibration event that was not excluded from the reporting period

Perimeter Air Monitoring Weekly Report



Real-Time Multigas Monitoring Bristol Landfill Air Investigation



March 25 - March 31, 2024

Date	Daily Statistics	Bristol Met Station 1					Bristol Met Station 2				
		Wind Dir	Wind Speed	Temp	RH	Baro	Wind Dir	Wind Speed	Temp	RH	Baro
		degrees	mph	°F	%	mbar	degrees	mph	°F	%	mbar
March 25, 2024	Minimum		0.3	38.8	10.2	946.8		1.0	38.5	10.2	950.3
	Maximum		6.2	67.9	51.5	952.8		9.4	65.5	50.0	956.3
	Average	111	3.7	52.8	30.0	950.2	110	4.8	52.3	29.8	953.7
March 26, 2024	Minimum		0.1	48.5	50.3	943.6		0.1	48.5	49.8	947.0
	Maximum		6.0	54.4	94.0	948.2		6.6	54.5	88.0	951.7
	Average	133	2.2	52.3	78.7	945.5	112	2.6	52.6	74.4	948.9
March 27, 2024	Minimum		0.0	45.8	43.7	944.2		0.1	46.1	42.6	947.6
	Maximum		5.4	67.0	94.0	947.6		4.4	65.8	88.0	951.0
	Average	15	1.8	55.6	70.4	946.1	313	1.4	55.2	68.0	949.5
March 28, 2024	Minimum		0.1	40.0	30.6	947.7		0.0	40.2	29.4	951.2
	Maximum		5.6	57.1	78.2	951.3		6.7	57.0	76.0	954.8
	Average	24	3.0	48.0	50.0	949.1	297	2.4	48.0	50.1	952.6
March 29, 2024	Minimum		0.4	35.5	25.0	947.4		0.0	31.5	25.4	950.8
	Maximum		4.2	68.0	64.5	951.7		7.1	66.2	79.9	955.1
	Average	289	2.0	56.1	38.2	949.3	300	2.6	49.1	52.4	953.1
March 30, 2024	Minimum		0.2	41.7	27.9	943.8		0.0	38.2	28.6	947.2
	Maximum		3.4	73.3	70.5	948.9		6.0	72.0	78.9	952.3
	Average	245	1.4	59.4	44.6	946.5	300	1.6	56.3	52.5	950.0
March 31, 2024	Minimum		0.1	51.0	39.6	944.2		0.1	49.0	41.8	947.6
	Maximum		4.1	77.2	71.0	947.3		7.9	75.6	78.9	950.7
	Average	247	1.3	64.8	55.6	945.7	302	1.5	62.1	61.3	949.2

Notes:

- Dash/Blank data records indicate no data is available for that interval
- Wind direction is a daily (24-hr) average value; with the origin of wind in degrees; clockwise from North calculated with vector averaging