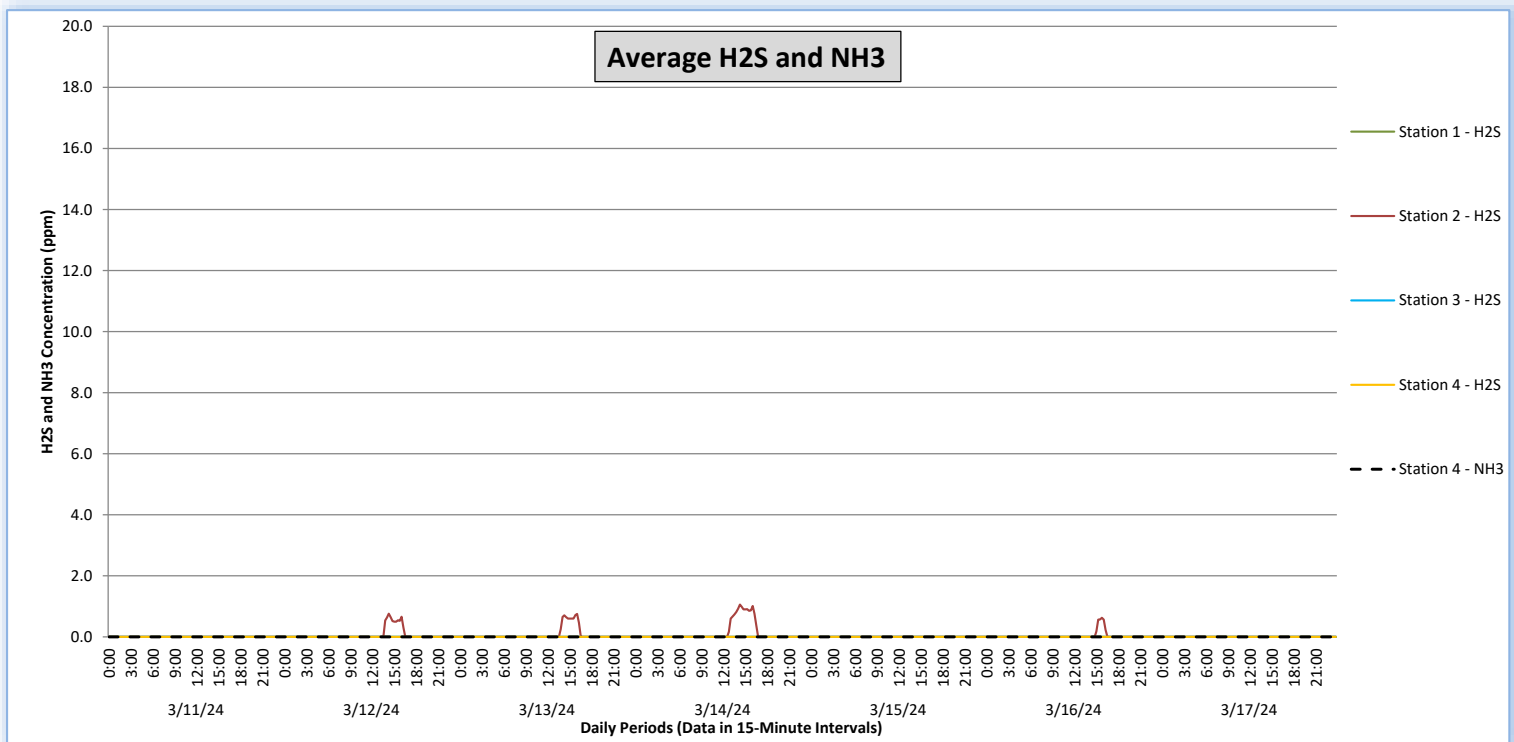
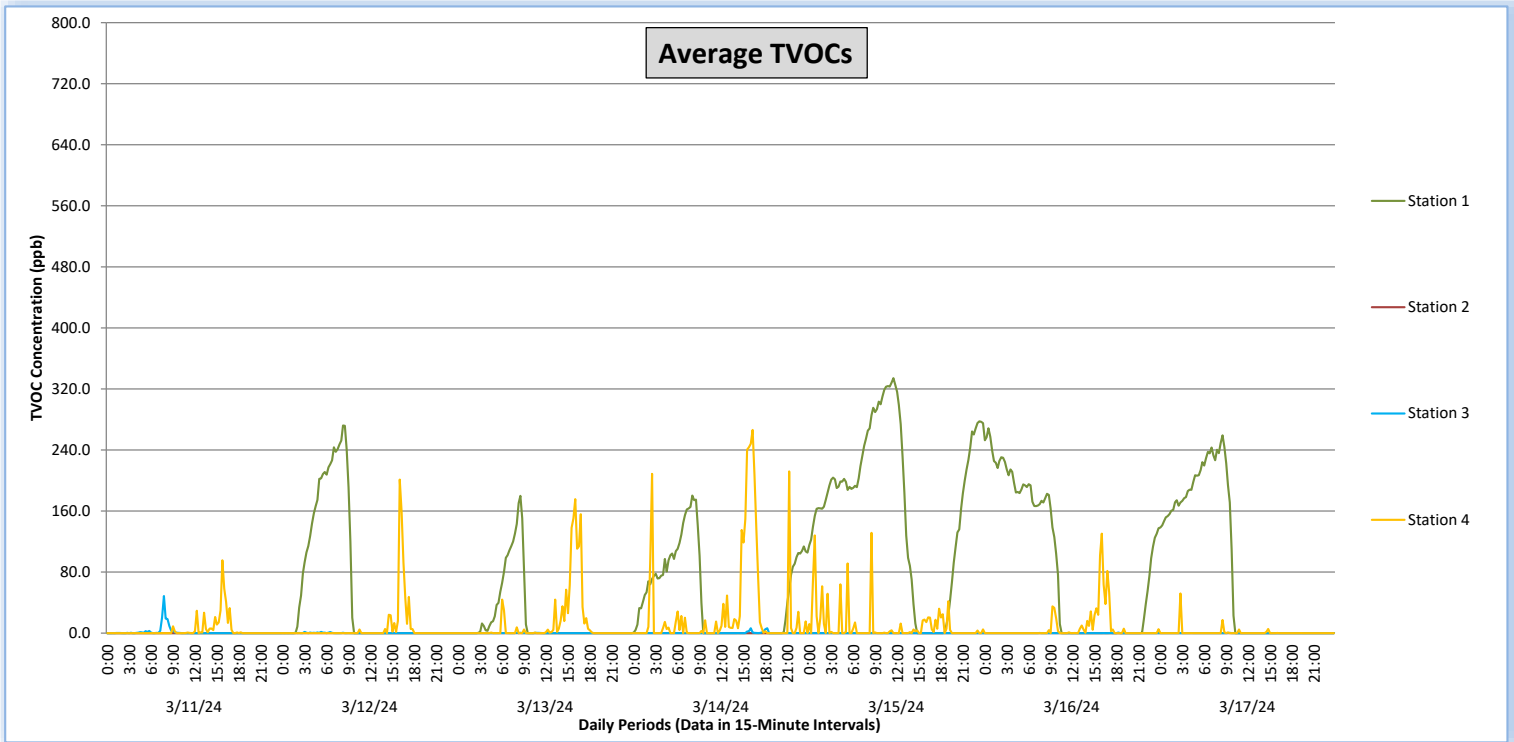


Perimeter Air Monitoring Weekly Report

Real-Time Multigas Monitoring
Bristol Landfill Air Investigation

March 11 - March 17, 2024



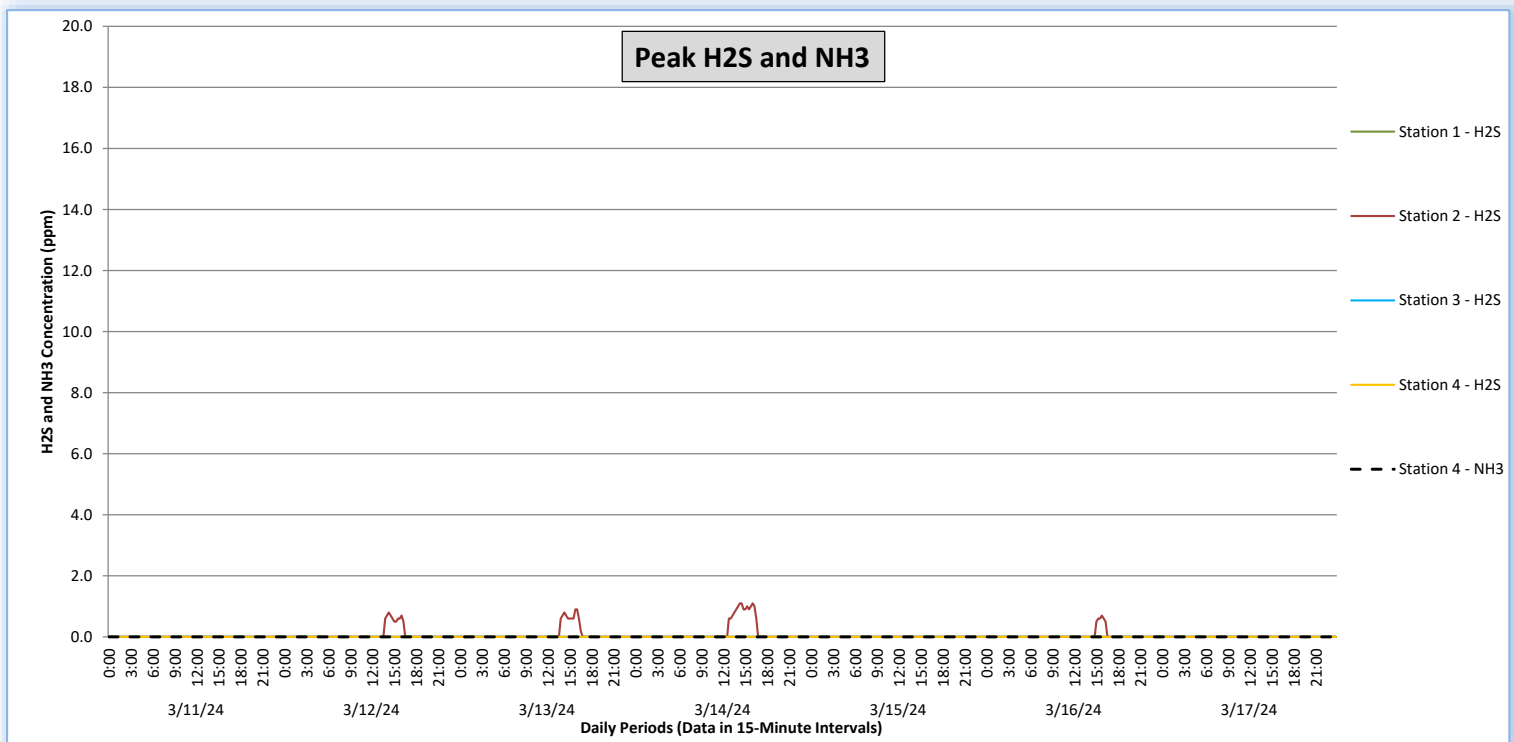
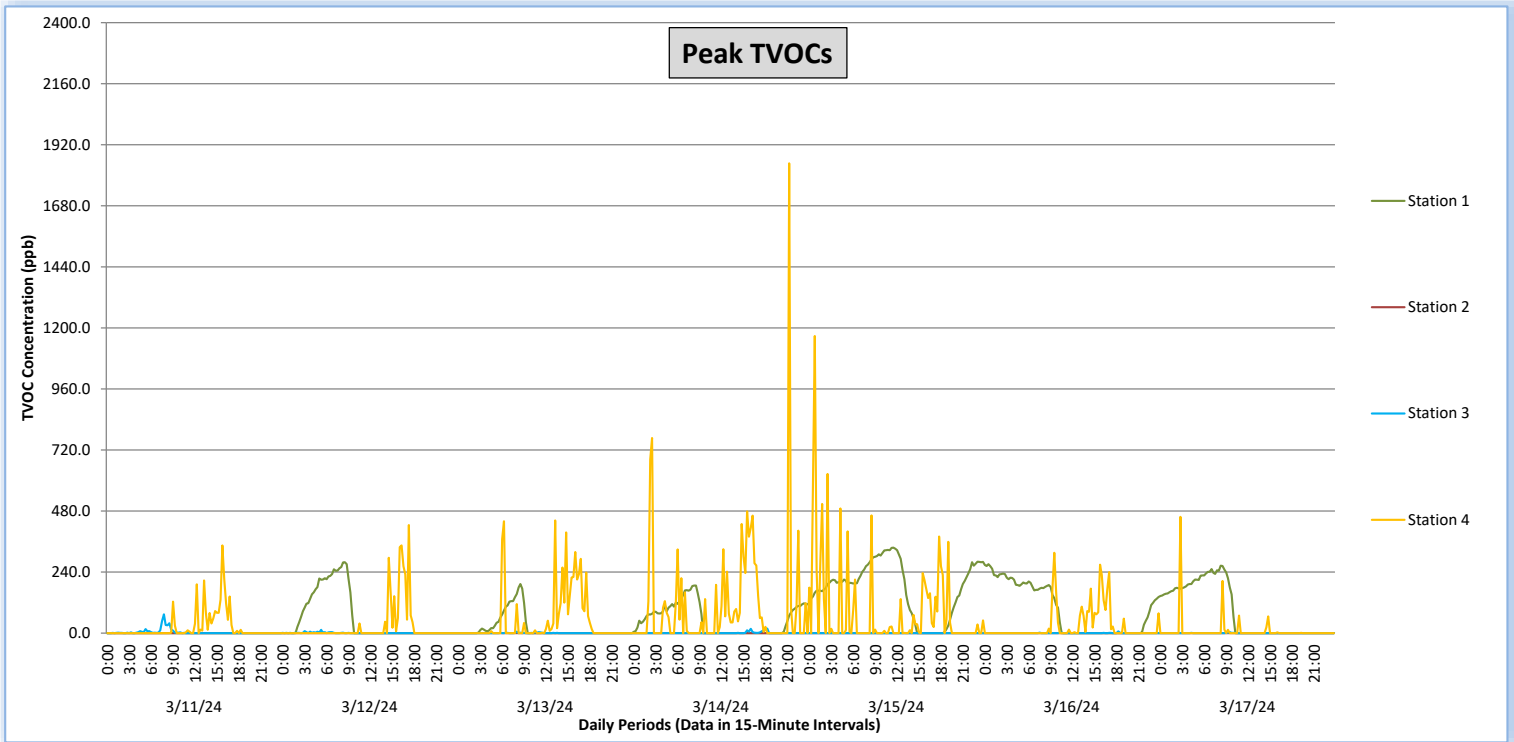


Perimeter Air Monitoring Weekly Report

Real-Time Multigas Monitoring
Bristol Landfill Air Investigation



March 11 - March 17, 2024





Perimeter Air Monitoring Weekly Report

Real-Time Multigas Monitoring
Bristol Landfill Air Investigation



March 11 - March 17, 2024

Date	Daily Statistics	Station 1				Station 2				Station 3				Station 4					
		TVOCs		H2S		TVOCs		H2S		TVOCs		H2S		TVOCs		H2S		NH3	
		Average ppb	Peak ppb	Average ppm	Peak ppm	Average ppb	Peak ppb	Average ppm	Peak ppm	Average ppb	Peak ppb	Average ppm	Peak ppm	Average ppb	Peak ppb	Average ppm	Peak ppm	Average ppm	Peak ppm
		Values from 15-minute intervals	1-minute max within each 15-minute interval	Values from 15-minute intervals	1-minute max within each 15-minute interval	Values from 15-minute intervals	1-minute max within each 15-minute interval	Values from 15-minute intervals	1-minute max within each 15-minute interval	Values from 15-minute intervals	1-minute max within each 15-minute interval	Values from 15-minute intervals	1-minute max within each 15-minute interval	Values from 15-minute intervals	1-minute max within each 15-minute interval	Values from 15-minute intervals	1-minute max within each 15-minute interval	Values from 15-minute intervals	1-minute max within each 15-minute interval
March 11, 2024	Minimum	0	0	0.0	0.0	0	0	0.0	0.0	0	0	0.0	0.0	0	0	0.0	0.0	0	0
	Maximum	0	0	0.0	0.0	0	0	0.0	0.0	49	74	0.0	0.0	96	345	0.0	0.0	0	0
	Average	0	0	0.0	0.0	0	0	0.0	0.0	1	4	0.0	0.0	4	23	0.0	0.0	0	0
March 12, 2024	Minimum	0	0	0.0	0.0	0	0	0.0	0.0	0	0	0.0	0.0	0	0	0.0	0.0	0	0
	Maximum	272	279	0.0	0.0	0	0	0.8	0.8	2	13	0.0	0.0	201	425	0.0	0.0	0	0
	Average	55	59	0.0	0.0	0	0	0.1	0.1	0	1	0.0	0.0	7	26	0.0	0.0	0	0
March 13, 2024	Minimum	0	0	0.0	0.0	0	0	0.0	0.0	0	0	0.0	0.0	0	0	0.0	0.0	0	0
	Maximum	180	193	0.0	0.0	0	0	0.8	0.9	1	6	0.0	0.0	176	443	0.0	0.0	0	0
	Average	19	21	0.0	0.0	0	0	0.1	0.1	0	0	0.0	0.0	13	50	0.0	0.0	0	0
March 14, 2024	Minimum	0	0	0.0	0.0	0	0	0.0	0.0	0	0	0.0	0.0	0	0	0.0	0.0	0	0
	Maximum	180	187	0.0	0.0	0	0	1.1	1.1	6	18	0.0	0.0	266	1,847	0.0	0.0	0	0
	Average	48	53	0.0	0.0	0	0	0.1	0.1	0	1	0.0	0.0	29	110	0.0	0.0	0	0
March 15, 2024	Minimum	0	0	0.0	0.0	0	0	0.0	0.0	0	0	0.0	0.0	0	0	0.0	0.0	0	0
	Maximum	334	336	0.0	0.0	0	0	0.0	0.0	0	0	0.0	0.0	131	1,168	0.0	0.0	0	0
	Average	170	177	0.0	0.0	0	0	0.0	0.0	0	0	0.0	0.0	10	87	0.0	0.0	0	0
March 16, 2024	Minimum	0	0	0.0	0.0	0	0	0.0	0.0	0	0	0.0	0.0	0	0	0.0	0.0	0	0
	Maximum	268	271	0.0	0.0	0	0	0.6	0.7	1	7	0.0	0.0	130	316	0.0	0.0	0	0
	Average	91	95	0.0	0.0	0	0	0.0	0.0	0	0	0.0	0.0	8	30	0.0	0.0	0	0
March 17, 2024	Minimum	0	0	0.0	0.0	0	0	0.0	0.0	0	0	0.0	0.0	0	0	0.0	0.0	0	0
	Maximum	259	265	0.0	0.0	0	0	0.0	0.0	0	4	0.0	0.0	52	457	0.0	0.0	0	0
	Average	81	85	0.0	0.0	0	0	0.0	0.0	0	0	0.0	0.0	1	9	0.0	0.0	0	0

Notes:

- Dash/Blank data records indicate no data is available for that interval
- Calibration readings and data produced during sensor errors are excluded from the report

Perimeter Air Monitoring Weekly Report



Real-Time Multigas Monitoring Bristol Landfill Air Investigation



March 11 - March 17, 2024

Date	Daily Statistics	Bristol Met Station 1					Bristol Met Station 2				
		Wind Dir degrees	Wind Speed mph	Temp °F	RH %	Baro mbar	Wind Dir degrees	Wind Speed mph	Temp °F	RH %	Baro mbar
March 11, 2024	Minimum		0.5	33.7	25.1	950.9		0.2	29.6	25.1	954.6
	Maximum		3.5	56.3	51.1	955.2		6.1	54.7	69.9	958.8
	Average	307	1.7	46.1	35.6	953.2	301	2.3	41.9	43.1	956.8
March 12, 2024	Minimum		0.2	45.9	23.2	947.3		0.2	28.5	24.5	950.8
	Maximum		2.8	66.2	55.9	952.8		5.3	64.6	79.8	956.4
	Average	225	1.1	57.8	31.5	949.5	325	1.1	45.6	53.9	953.9
March 13, 2024	Minimum		0.1	45.4	26.9	946.0		0.0	35.3	28.6	949.6
	Maximum		3.2	71.2	67.0	948.9		5.5	69.3	78.0	952.5
	Average	252	1.2	61.3	39.7	947.5	314	1.2	51.9	54.5	951.1
March 14, 2024	Minimum		0.1	42.5	30.9	947.6		0.2	40.6	33.2	951.2
	Maximum		4.0	78.6	79.4	951.1		6.4	77.1	79.8	954.7
	Average	282	1.4	62.3	53.6	949.0	303	1.3	58.6	58.8	952.7
March 15, 2024	Minimum		0.1	54.3	71.0	942.9		0.1	52.4	70.3	946.4
	Maximum		2.0	66.5	94.0	948.3		4.3	65.9	88.0	951.8
	Average	209	0.8	58.4	83.6	945.7	304	1.3	58.1	80.4	949.2
March 16, 2024	Minimum		0.2	46.7	40.2	941.4		0.0	47.0	42.4	945.0
	Maximum		3.7	66.2	93.0	947.0		5.2	65.3	87.0	950.6
	Average	351	1.2	55.4	72.2	944.3	307	1.7	55.0	70.6	947.9
March 17, 2024	Minimum		0.1	43.8	41.7	937.9		0.1	42.7	39.1	941.4
	Maximum		4.6	63.2	94.0	942.0		7.6	61.9	88.0	945.6
	Average	294	1.9	53.2	66.5	940.2	300	3.2	53.1	64.2	943.8

Notes:

- Dash/Blank data records indicate no data is available for that interval
- Wind direction is a daily (24-hr) average value; with the origin of wind in degrees; clockwise from North calculated with vector averaging