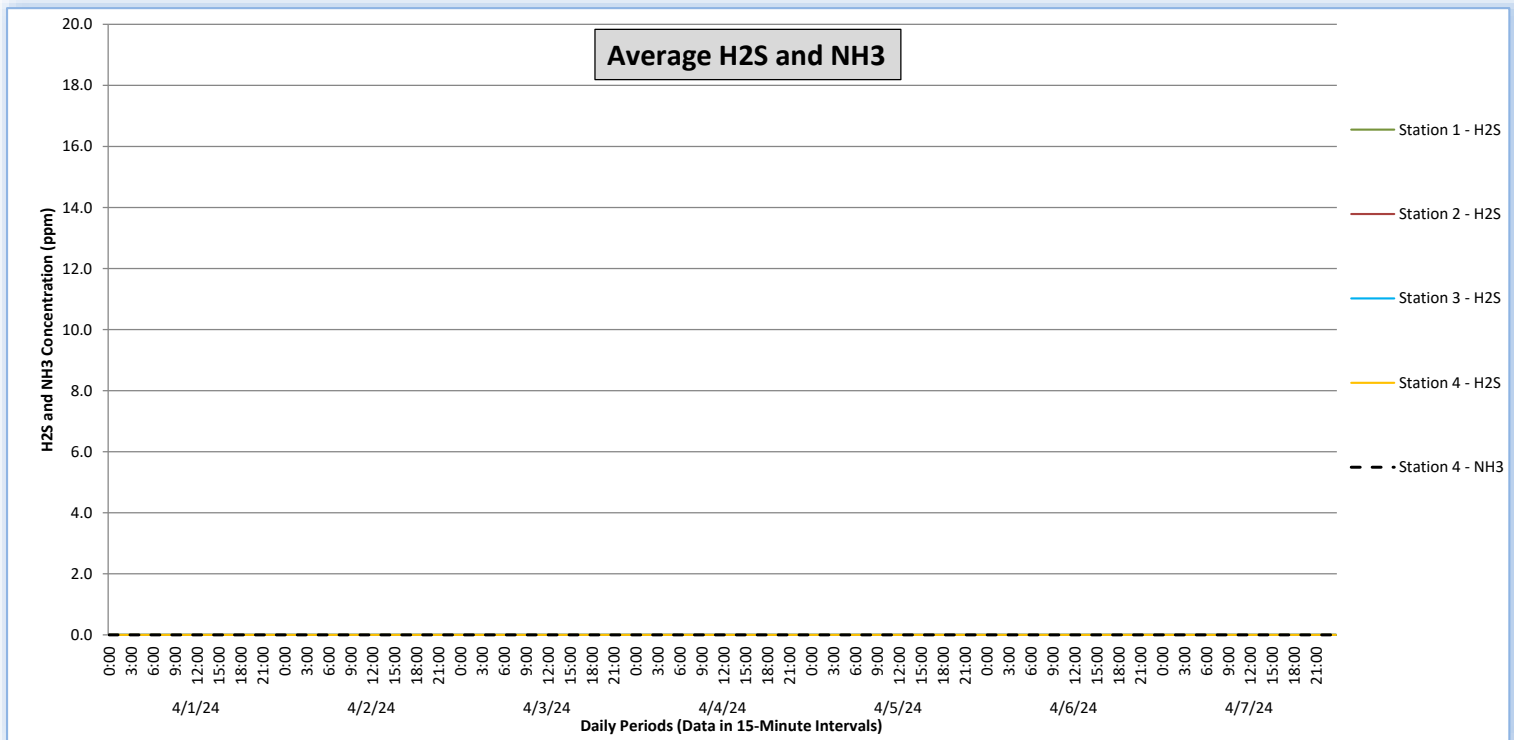
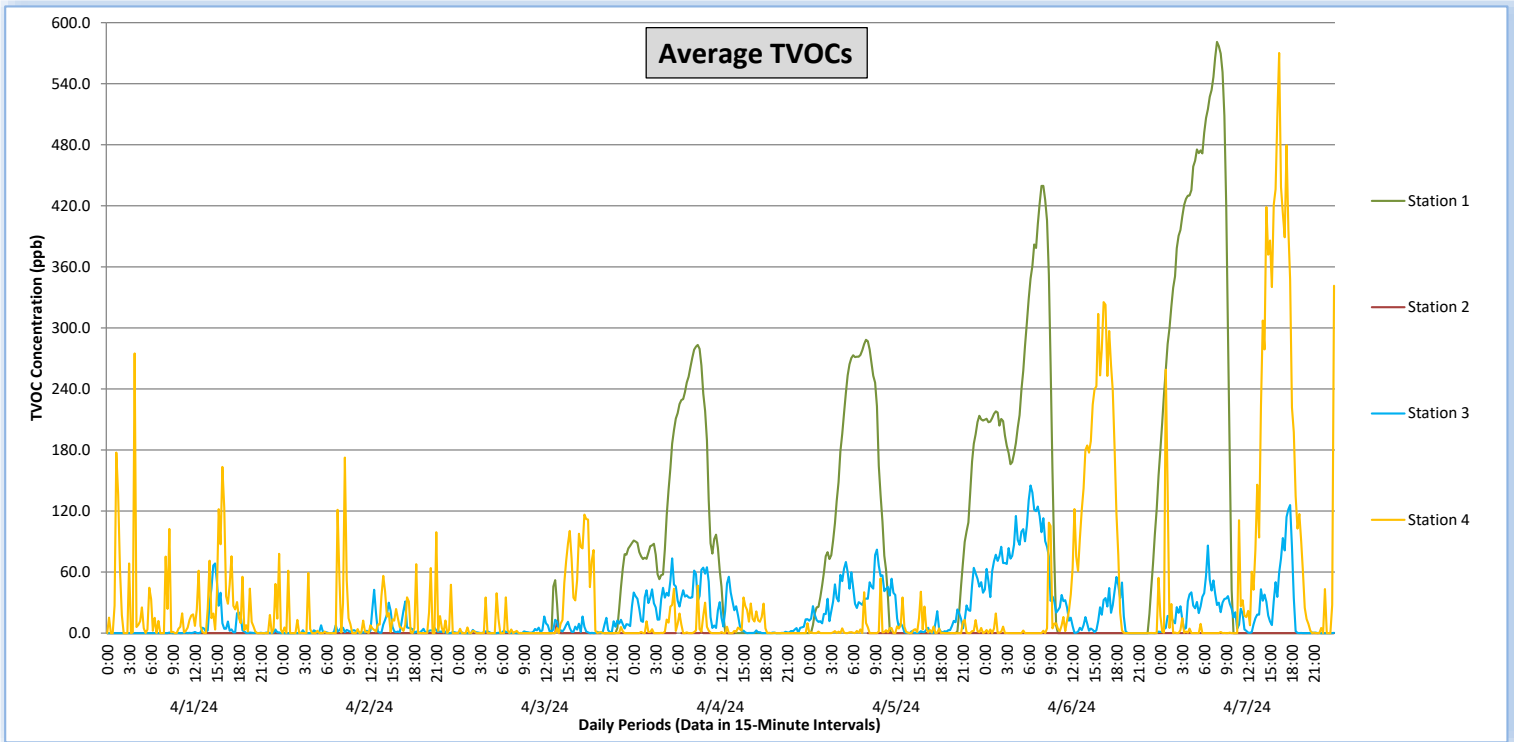


Perimeter Air Monitoring Weekly Report

Real-Time Multigas Monitoring
Bristol Landfill Air Investigation

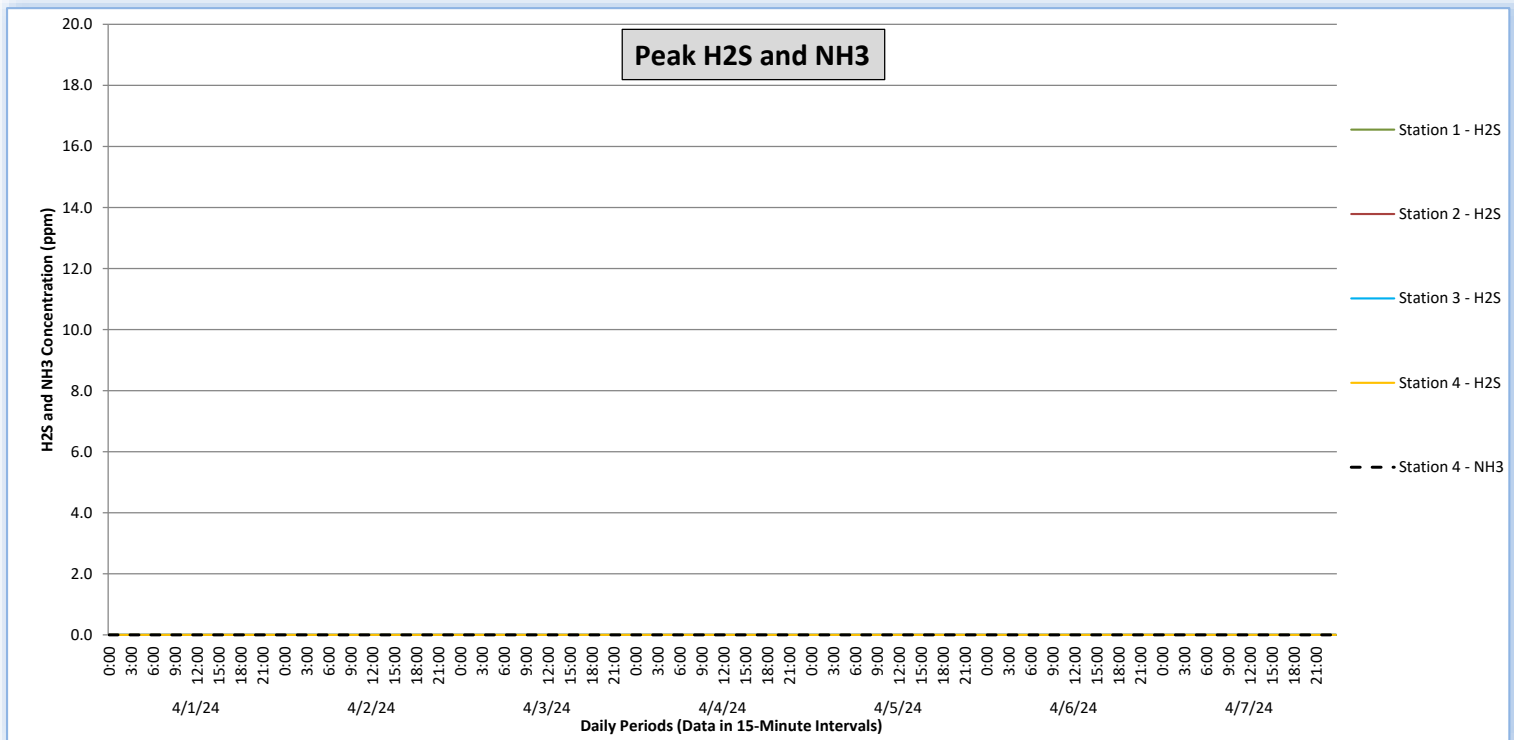
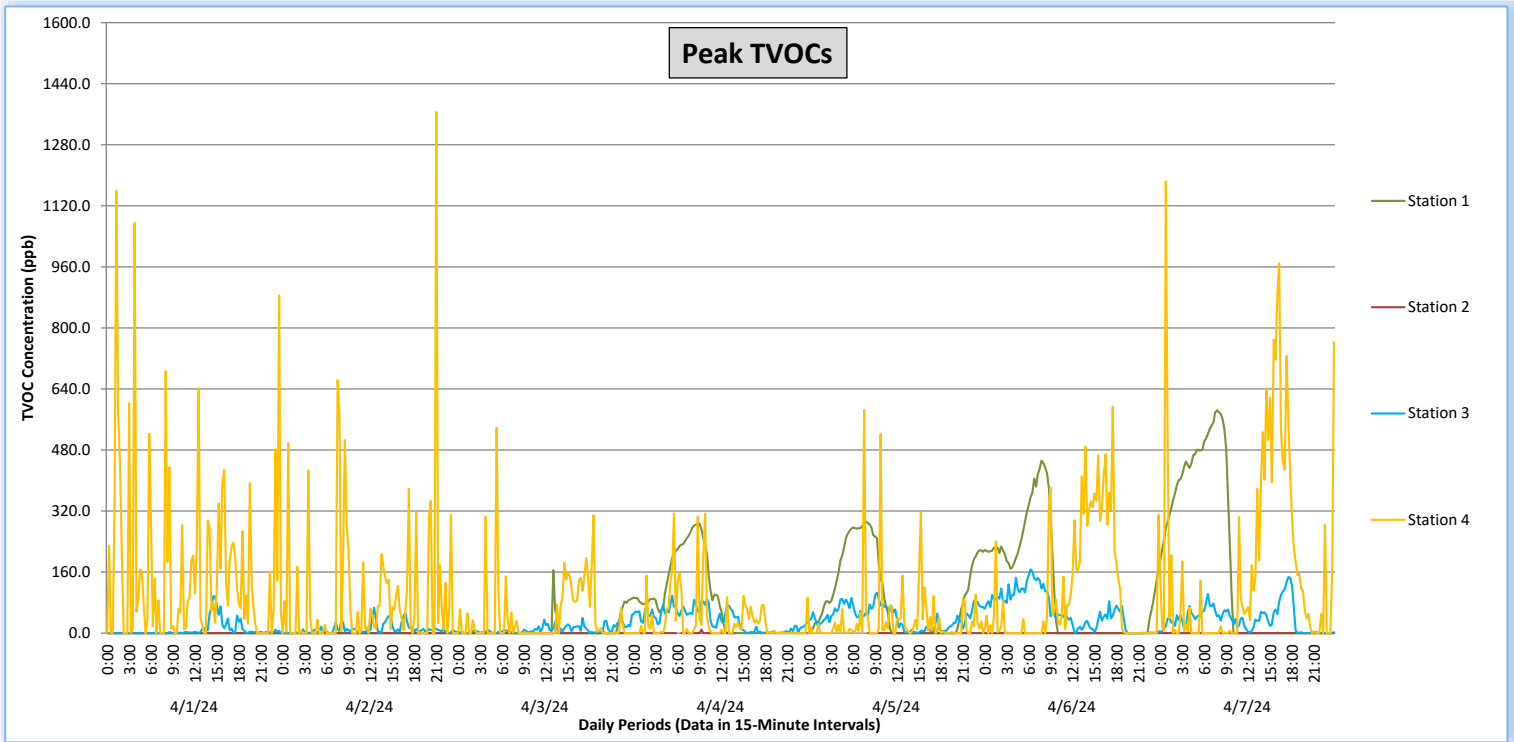
April 1 - April 7, 2024



Perimeter Air Monitoring Weekly Report

Real-Time Multigas Monitoring
Bristol Landfill Air Investigation

April 1 - April 7, 2024





Perimeter Air Monitoring Weekly Report

Real-Time Multigas Monitoring Bristol Landfill Air Investigation



April 1 - April 7, 2024

Date	Daily Statistics	Station 1				Station 2				Station 3				Station 4					
		TVOCs		H2S		TVOCs		H2S		TVOCs		H2S		TVOCs		H2S		NH3	
		Average ppb	Peak ppb	Average ppm	Peak ppm	Average ppb	Peak ppb	Average ppm	Peak ppm	Average ppb	Peak ppb	Average ppm	Peak ppm	Average ppb	Peak ppb	Average ppm	Peak ppm	Average ppm	Peak ppm
		Values from 15-minute intervals	1-minute max within each 15-minute interval	Values from 15-minute intervals	1-minute max within each 15-minute interval	Values from 15-minute intervals	1-minute max within each 15-minute interval	Values from 15-minute intervals	1-minute max within each 15-minute interval	Values from 15-minute intervals	1-minute max within each 15-minute interval	Values from 15-minute intervals	1-minute max within each 15-minute interval	Values from 15-minute intervals	1-minute max within each 15-minute interval	Values from 15-minute intervals	1-minute max within each 15-minute interval	Values from 15-minute intervals	1-minute max within each 15-minute interval
April 1, 2024	Minimum	0	0	0.0	0.0	0	0	0.0	0.0	0	0	0.0	0.0	0	0	0.0	0.0	0	0
	Maximum	0	0	0.0	0.0	0	0	0.0	0.0	69	97	0.0	0.0	275	1,159	0.0	0.0	0	0
	Average	0	0	0.0	0.0	0	0	0.0	0.0	5	9	0.0	0.0	27	166	0.0	0.0	0	0
April 2, 2024	Minimum	0	0	0.0	0.0	0	0	0.0	0.0	0	0	0.0	0.0	0	0	0.0	0.0	0	0
	Maximum	0	0	0.0	0.0	0	0	0.0	0.0	43	67	0.0	0.0	173	1,366	0.0	0.0	0	0
	Average	0	0	0.0	0.0	0	0	0.0	0.0	4	11	0.0	0.0	14	97	0.0	0.0	0	0
April 3, 2024	Minimum	0	0	0.0	0.0	0	0	0.0	0.0	0	0	0.0	0.0	0	0	0.0	0.0	0	0
	Maximum	89	165	0.0	0.0	12	50	0.0	0.0	27	48	0.0	0.0	116	538	0.0	0.0	0	0
	Average	7	9	0.0	0.0	0	1	0.0	0.0	4	10	0.0	0.0	16	44	0.0	0.0	0	0
April 4, 2024	Minimum	0	0	0.0	0.0	0	0	0.0	0.0	0	0	0.0	0.0	0	0	0.0	0.0	0	0
	Maximum	283	287	0.0	0.0	1	9	0.0	0.0	74	98	0.0	0.0	47	313	0.0	0.0	0	0
	Average	76	80	0.0	0.0	0	0	0.0	0.0	22	35	0.0	0.0	6	36	0.0	0.0	0	0
April 5, 2024	Minimum	0	0	0.0	0.0	0	0	0.0	0.0	0	1	0.0	0.0	0	0	0.0	0.0	0	0
	Maximum	288	292	0.0	0.0	0	0	0.0	0.0	82	106	0.0	0.0	54	585	0.0	0.0	0	0
	Average	93	98	0.0	0.0	0	0	0.0	0.0	26	42	0.0	0.0	4	35	0.0	0.0	0	0
April 6, 2024	Minimum	0	0	0.0	0.0	0	0	0.0	0.0	0	0	0.0	0.0	0	0	0.0	0.0	0	0
	Maximum	440	452	0.0	0.0	0	0	0.0	0.0	145	167	0.0	0.0	325	593	0.0	0.0	0	0
	Average	112	118	0.0	0.0	0	0	0.0	0.0	43	58	0.0	0.0	57	111	0.0	0.0	0	0
April 7, 2024	Minimum	0	0	0.0	0.0	0	0	0.0	0.0	0	0	0.0	0.0	0	0	0.0	0.0	0	0
	Maximum	581	584	0.0	0.0	0	0	0.0	0.0	126	147	0.0	0.0	570	1,184	0.0	0.0	0	0
	Average	171	177	0.0	0.0	0	0	0.0	0.0	24	38	0.0	0.0	96	176	0.0	0.0	0	0

Notes:

- Dash/Blank data records indicate no data is available for that interval
- Calibration readings and data produced during sensor errors are excluded from the report

Perimeter Air Monitoring Weekly Report



Real-Time Multigas Monitoring Bristol Landfill Air Investigation



April 1 - April 7, 2024

Date	Daily Statistics	Bristol Met Station 1					Bristol Met Station 2				
		Wind Dir degrees	Wind Speed mph	Temp °F	RH %	Baro mbar	Wind Dir degrees	Wind Speed mph	Temp °F	RH %	Baro mbar
April 1, 2024	Minimum		0.2	58.9	52.4	942.8		0.1	55.7	53.5	946.2
	Maximum		2.8	77.5	77.0	946.4		4.8	76.9	80.4	949.8
	Average	225	1.2	67.2	68.3	944.5	308	1.3	66.0	69.5	948.0
April 2, 2024	Minimum		0.1	61.5	55.5	931.2		0.1	58.6	57.9	934.5
	Maximum		4.9	77.9	83.0	943.5		6.5	76.7	84.3	946.9
	Average	257	1.2	69.1	70.6	938.4	306	1.6	67.7	71.7	941.9
April 3, 2024	Minimum		0.2	41.6	44.6	926.7		0.2	42.0	41.8	930.0
	Maximum		5.6	70.1	95.0	932.4		8.6	70.1	89.0	935.7
	Average	291	2.7	53.1	71.5	929.9	295	3.9	53.8	70.3	933.0
April 4, 2024	Minimum		1.1	37.6	47.5	930.5		0.8	36.5	45.5	933.6
	Maximum		5.7	47.5	88.2	941.1		8.7	47.3	84.0	944.5
	Average	289	3.6	42.5	65.3	935.4	297	4.7	41.7	65.9	937.8
April 5, 2024	Minimum		0.6	38.2	57.9	941.3		0.8	35.9	57.9	944.7
	Maximum		3.9	46.8	82.9	948.8		6.4	45.7	80.4	952.2
	Average	294	2.5	41.5	70.4	945.4	297	3.6	40.1	70.7	948.2
April 6, 2024	Minimum		0.3	37.0	38.5	948.7		0.2	30.4	38.6	952.1
	Maximum		5.9	56.0	78.9	951.3		3.9	55.7	82.3	954.7
	Average	24	2.8	46.6	55.2	949.7	307	1.7	43.7	59.2	953.1
April 7, 2024	Minimum		0.2	35.8	23.9	930.9		0.1	31.2	25.4	951.5
	Maximum		2.7	69.3	75.0	951.8		4.2	67.9	81.9	955.2
	Average	121	1.0	58.7	37.2	948.9	39	1.2	49.2	54.3	953.1

Notes:

- Dash/Blank data records indicate no data is available for that interval
- Wind direction is a daily (24-hr) average value; with the origin of wind in degrees; clockwise from North calculated with vector averaging