

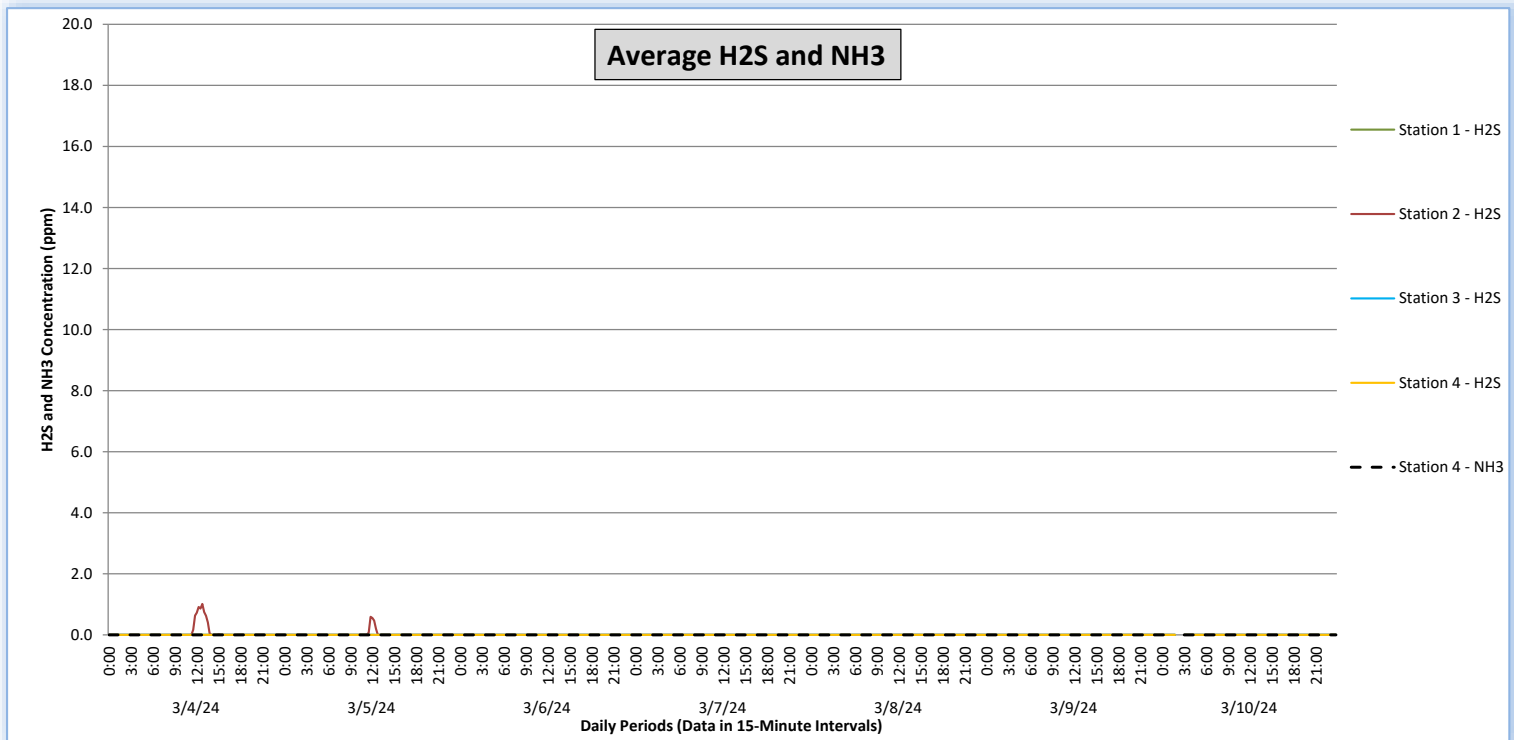
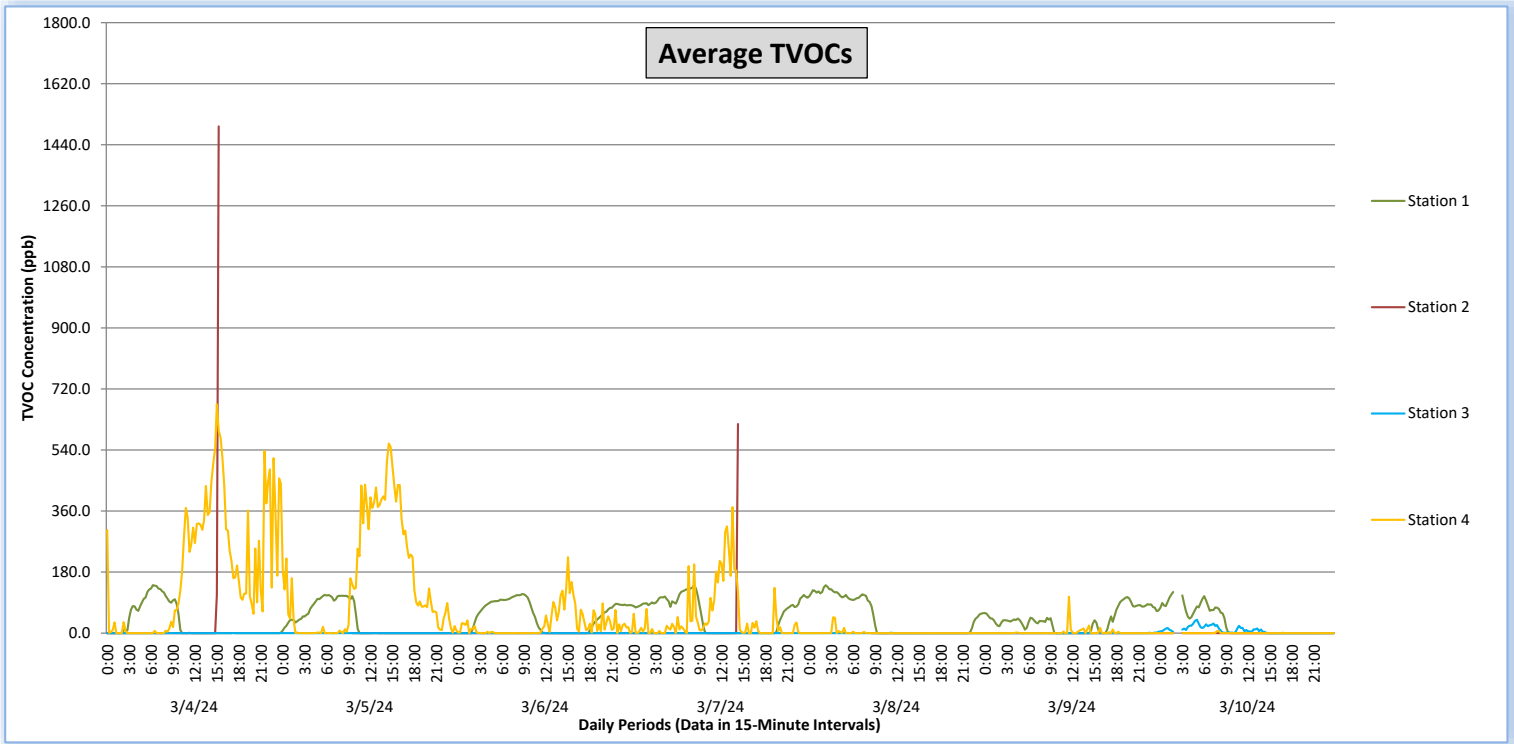
Perimeter Air Monitoring Weekly Report



Real-Time Multigas Monitoring
Bristol Landfill Air Investigation



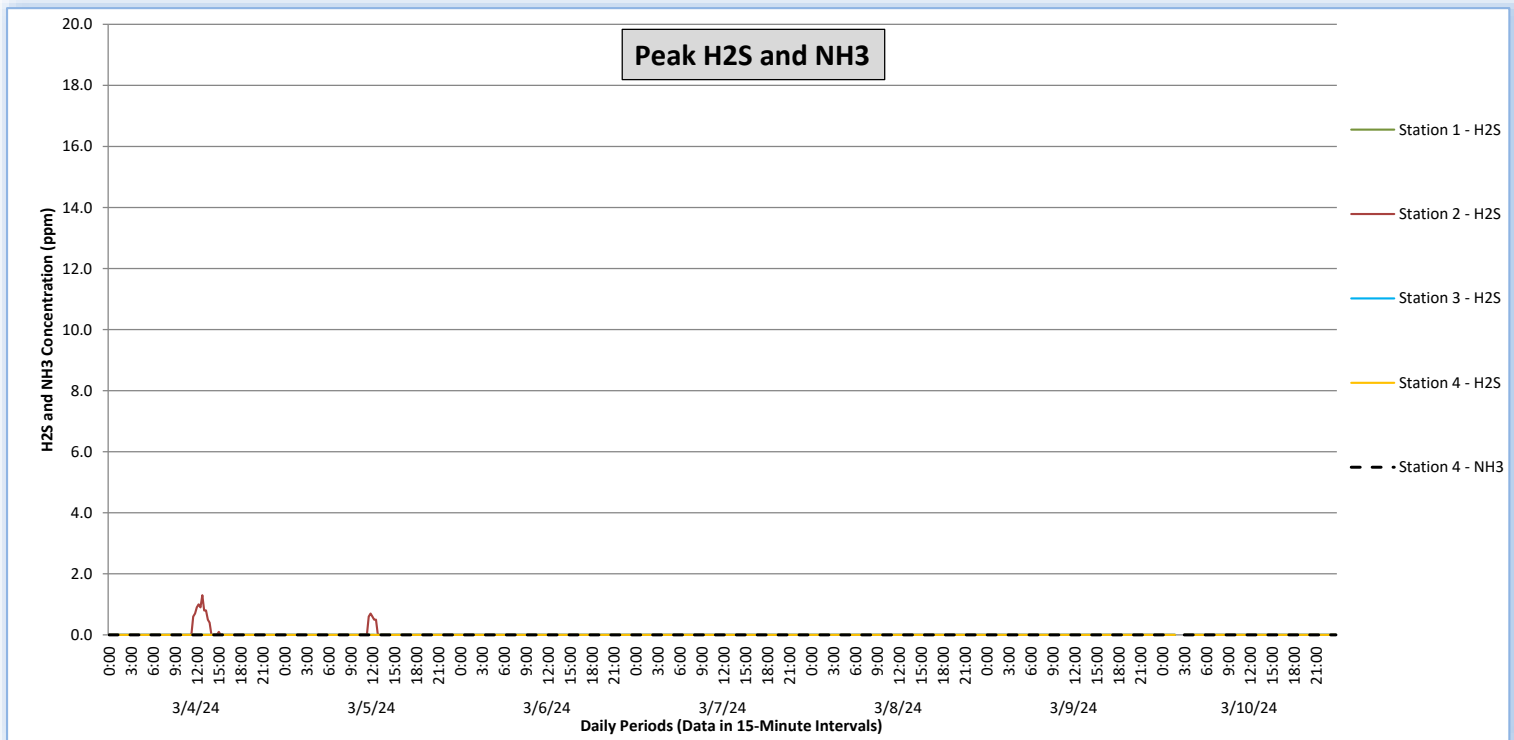
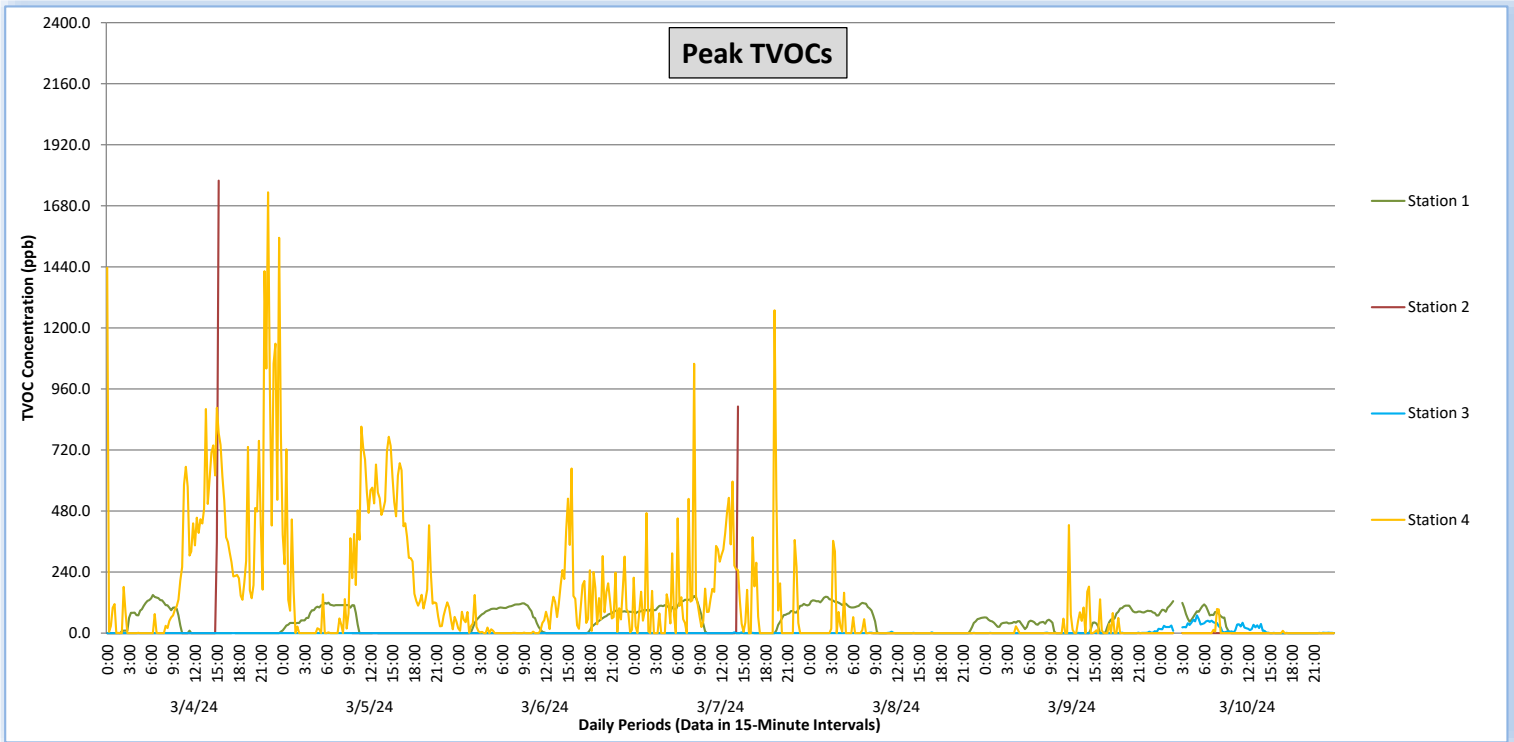
March 4 - March 10, 2024



Perimeter Air Monitoring Weekly Report

Real-Time Multigas Monitoring
Bristol Landfill Air Investigation

March 4 - March 10, 2024





Perimeter Air Monitoring Weekly Report

Real-Time Multigas Monitoring Bristol Landfill Air Investigation



March 4 - March 10, 2024

Date	Daily Statistics	Station 1				Station 2				Station 3				Station 4					
		TVOCs		H2S		TVOCs		H2S		TVOCs		H2S		TVOCs		H2S		NH3	
		Average ppb	Peak ppb	Average ppm	Peak ppm	Average ppb	Peak ppb	Average ppm	Peak ppm	Average ppb	Peak ppb	Average ppm	Peak ppm	Average ppb	Peak ppb	Average ppm	Peak ppm	Average ppm	Peak ppm
		Values from 15-minute intervals	1-minute max within each 15-minute interval	Values from 15-minute intervals	1-minute max within each 15-minute interval	Values from 15-minute intervals	1-minute max within each 15-minute interval	Values from 15-minute intervals	1-minute max within each 15-minute interval	Values from 15-minute intervals	1-minute max within each 15-minute interval	Values from 15-minute intervals	1-minute max within each 15-minute interval	Values from 15-minute intervals	1-minute max within each 15-minute interval	Values from 15-minute intervals	1-minute max within each 15-minute interval	Values from 15-minute intervals	1-minute max within each 15-minute interval
March 4, 2024	Minimum	0	0	0.0	0.0	0	0	0.0	0.0	0	0	0.0	0.0	0	0	0.0	0.0	0	0
	Maximum	142	150	0.0	0.0	1,494	1,779	1.0	1.3	0	0	0.0	0.0	675	1,733	0.0	0.0	0	0
	Average	30	32	0.0	0.0	26	34	0.1	0.1	0	0	0.0	0.0	184	347	0.0	0.0	0	0
March 5, 2024	Minimum	0	0	0.0	0.0	0	0	0.0	0.0	0	0	0.0	0.0	0	0	0.0	0.0	0	0
	Maximum	113	120	0.0	0.0	0	0	0.6	0.7	0	0	0.0	0.0	559	812	0.0	0.0	0	0
	Average	34	36	0.0	0.0	0	0	0.0	0.0	0	0	0.0	0.0	151	245	0.0	0.0	0	0
March 6, 2024	Minimum	0	0	0.0	0.0	0	0	0.0	0.0	0	0	0.0	0.0	0	0	0.0	0.0	0	0
	Maximum	115	117	0.0	0.0	0	0	0.0	0.0	0	0	0.0	0.0	224	647	0.0	0.0	0	0
	Average	48	51	0.0	0.0	0	0	0.0	0.0	0	0	0.0	0.0	27	82	0.0	0.0	0	0
March 7, 2024	Minimum	0	0	0.0	0.0	0	0	0.0	0.0	0	0	0.0	0.0	0	0	0.0	0.0	0	0
	Maximum	142	146	0.0	0.0	617	891	0.0	0.0	0	3	0.0	0.0	371	1,269	0.0	0.0	0	0
	Average	54	57	0.0	0.0	11	15	0.0	0.0	0	0	0.0	0.0	47	152	0.0	0.0	0	0
March 8, 2024	Minimum	0	0	0.0	0.0	0	0	0.0	0.0	0	0	0.0	0.0	0	0	0.0	0.0	0	0
	Maximum	141	143	0.0	0.0	0	0	0.0	0.0	1	6	0.0	0.0	47	363	0.0	0.0	0	0
	Average	45	48	0.0	0.0	0	0	0.0	0.0	0	0	0.0	0.0	1	12	0.0	0.0	0	0
March 9, 2024	Minimum	0	0	0.0	0.0	0	0	0.0	0.0	0	0	0.0	0.0	0	0	0.0	0.0	0	0
	Maximum	107	108	0.0	0.0	0	0	0.0	0.0	4	17	0.0	0.0	107	425	0.0	0.0	0	0
	Average	38	42	0.0	0.0	0	0	0.0	0.0	0	1	0.0	0.0	2	16	0.0	0.0	0	0
March 10, 2024	Minimum	0	0	0.0	0.0	0	0	0.0	0.0	0	0	0.0	0.0	0	0	0.0	0.0	0	0
	Maximum	121	126	0.0	0.0	0	0	0.0	0.0	39	70	0.0	0.0	6	95	0.0	0.0	0	0
	Average	27	30	0.0	0.0	0	0	0.0	0.0	8	16	0.0	0.0	0	2	0.0	0.0	0	0

Notes:

- Dash/Blank data records indicate no data is available for that interval
- Calibration readings and data produced during sensor errors are excluded from the report

Perimeter Air Monitoring Weekly Report



Real-Time Multigas Monitoring Bristol Landfill Air Investigation



March 4 - March 10, 2024

Date	Daily Statistics	Bristol Met Station 1					Bristol Met Station 2				
		Wind Dir degrees	Wind Speed mph	Temp °F	RH %	Baro mbar	Wind Dir degrees	Wind Speed mph	Temp °F	RH %	Baro mbar
March 4, 2024	Minimum		0.3	46.5	35.0	949.1		0.3	44.7	36.8	952.7
	Maximum		3.2	77.8	90.0	953.8		3.8	76.3	83.8	957.5
	Average	38	1.5	60.3	64.2	951.4	97	1.7	60.0	63.7	955.1
March 5, 2024	Minimum		0.5	48.4	29.5	944.9		0.1	49.4	31.0	948.6
	Maximum		3.3	76.0	87.0	950.4		3.2	74.7	81.9	954.0
	Average	47	1.6	62.1	59.0	947.7	38	1.2	61.4	59.4	951.4
March 6, 2024	Minimum		0.3	50.4	54.3	939.5		0.1	50.5	53.9	943.2
	Maximum		4.0	61.9	95.0	946.0		3.3	62.0	89.0	949.6
	Average	43	2.0	54.0	90.3	942.2	26	1.4	54.4	83.8	945.8
March 7, 2024	Minimum		0.1	50.5	54.2	943.2		0.3	51.4	55.3	946.8
	Maximum		5.9	66.0	96.0	948.2		3.1	65.0	89.0	951.8
	Average	22	1.4	55.6	82.3	946.2	315	1.2	55.8	78.0	949.8
March 8, 2024	Minimum		0.5	51.0	63.8	945.6		0.2	50.9	64.4	949.2
	Maximum		6.5	62.4	86.8	950.9		8.4	61.2	82.7	954.5
	Average	134	2.5	55.6	76.8	948.4	123	2.9	55.9	74.2	952.1
March 9, 2024	Minimum		0.1	43.1	73.0	935.7		0.2	43.2	70.4	939.2
	Maximum		5.2	60.5	94.0	945.1		6.9	60.2	87.6	948.7
	Average	241	1.9	54.6	84.2	939.0	296	2.6	54.6	80.0	942.6
March 10, 2024	Minimum		1.6	36.3	32.2	941.1		2.0	36.8	30.2	944.7
	Maximum		5.4	48.2	93.0	950.8		11.0	46.7	86.0	954.5
	Average	298	3.5	40.7	61.7	944.7	296	5.8	41.0	56.2	948.4

Notes:

- Dash/Blank data records indicate no data is available for that interval
- Wind direction is a daily (24-hr) average value; with the origin of wind in degrees; clockwise from North calculated with vector averaging