

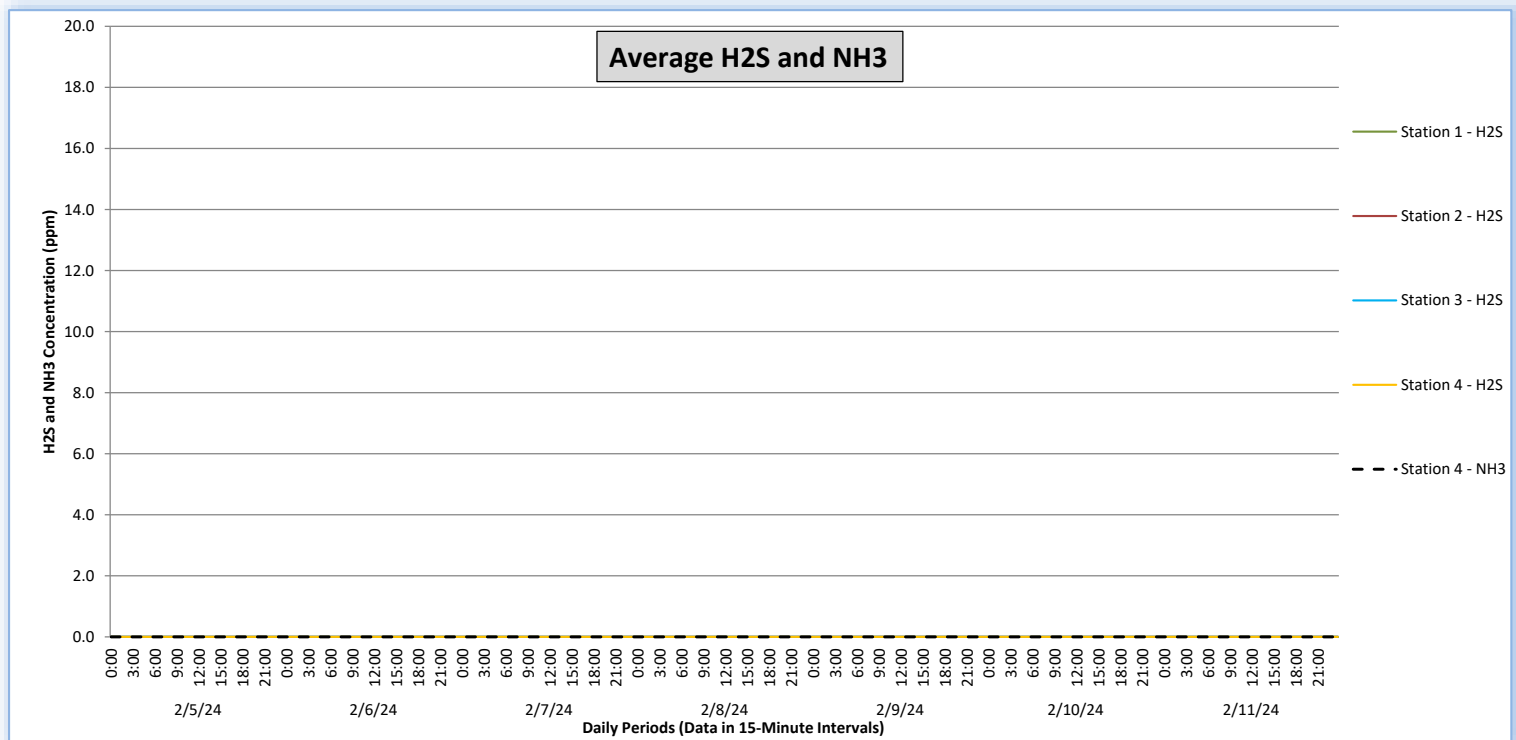
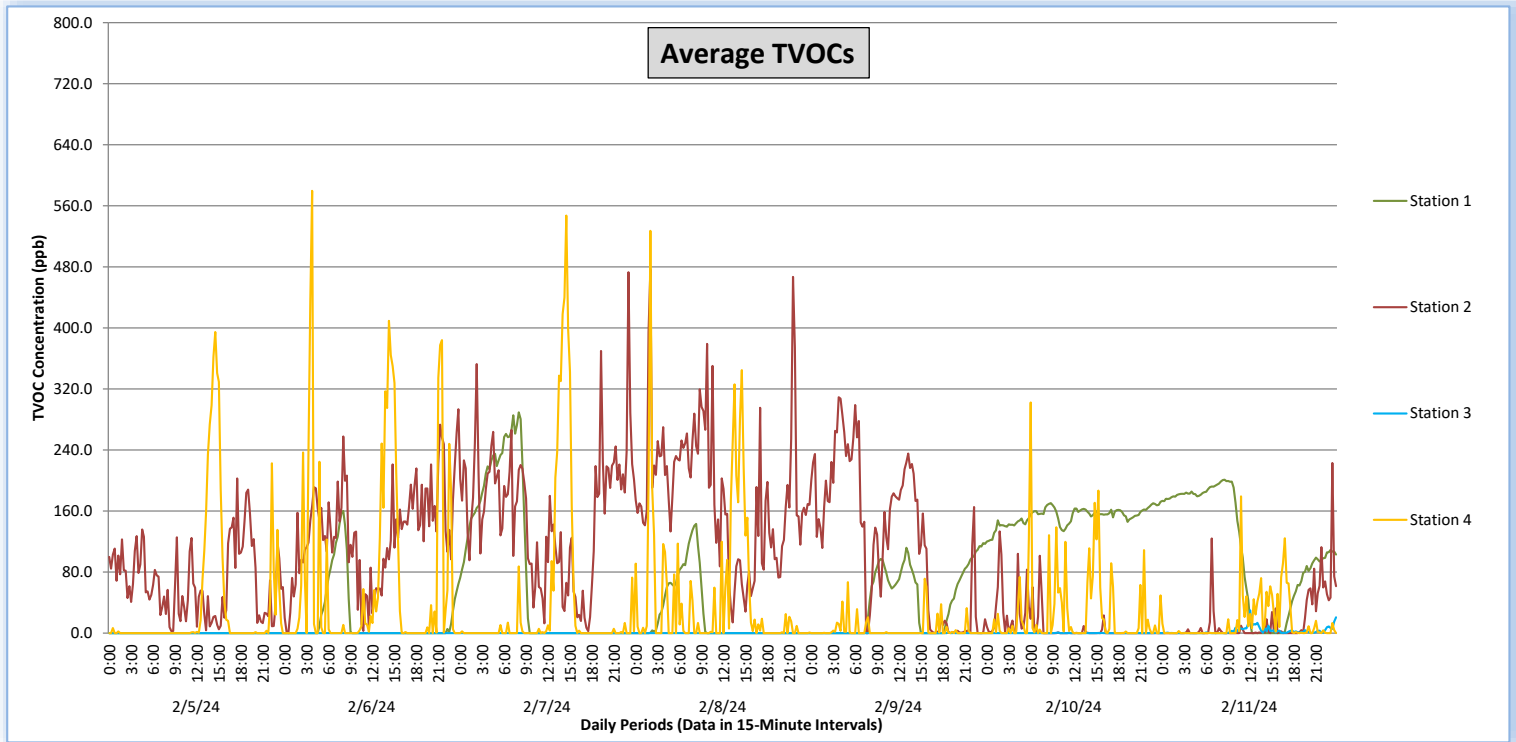


Perimeter Air Monitoring Weekly Report

Real-Time Multigas Monitoring
Bristol Landfill Air Investigation



February 5 - February 11, 2024



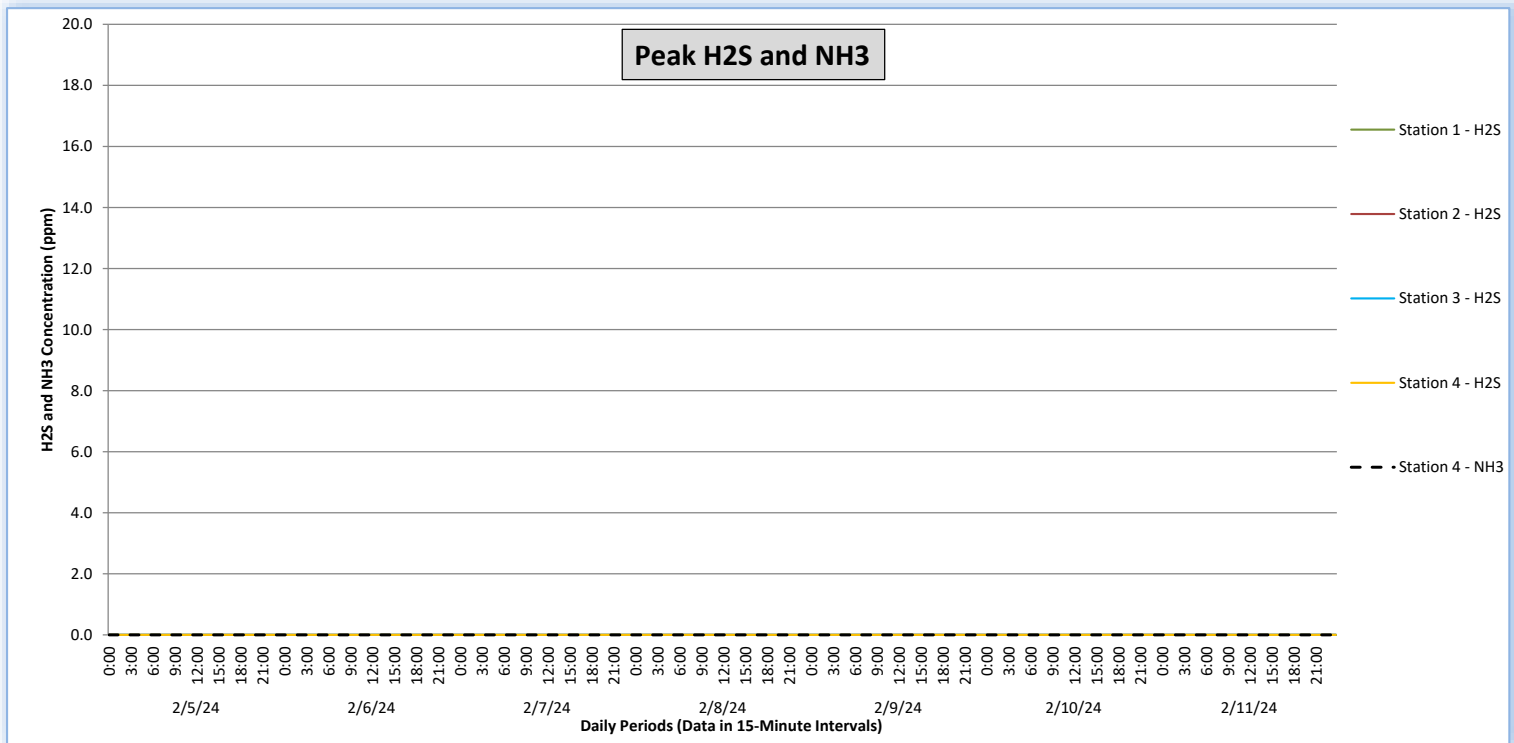
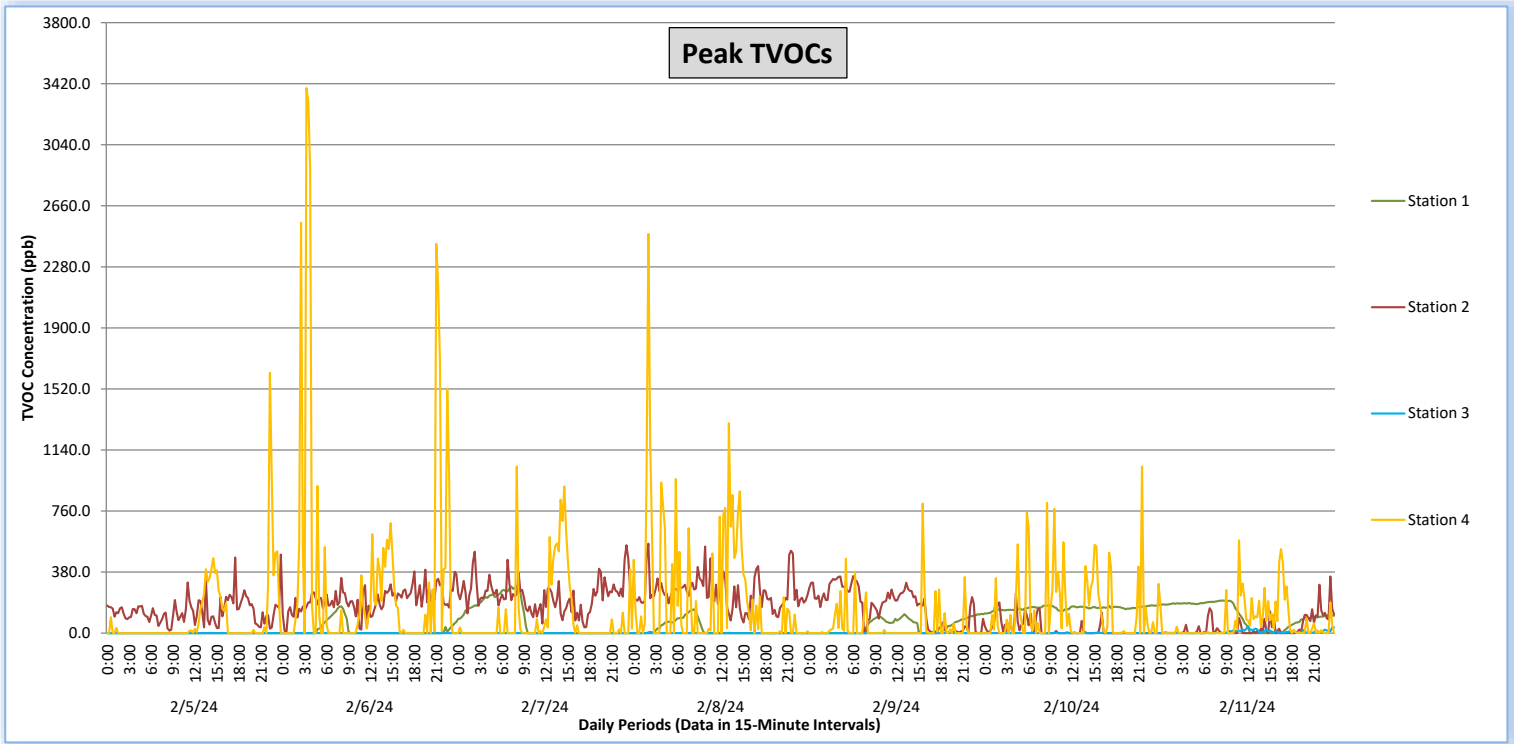
Perimeter Air Monitoring Weekly Report



Real-Time Multigas Monitoring
Bristol Landfill Air Investigation



February 5 - February 11, 2024





Perimeter Air Monitoring Weekly Report

Real-Time Multigas Monitoring Bristol Landfill Air Investigation



February 5 - February 11, 2024

Date	Daily Statistics	Station 1				Station 2				Station 3				Station 4					
		TVOCs		H2S		TVOCs		H2S		TVOCs		H2S		TVOCs		H2S		NH3	
		Average ppb	Peak ppb	Average ppm	Peak ppm	Average ppb	Peak ppb	Average ppm	Peak ppm	Average ppb	Peak ppb	Average ppm	Peak ppm	Average ppb	Peak ppb	Average ppm	Peak ppm	Average ppm	Peak ppm
		Values from 15-minute intervals	1-minute max within each 15-minute interval	Values from 15-minute intervals	1-minute max within each 15-minute interval	Values from 15-minute intervals	1-minute max within each 15-minute interval	Values from 15-minute intervals	1-minute max within each 15-minute interval	Values from 15-minute intervals	1-minute max within each 15-minute interval	Values from 15-minute intervals	1-minute max within each 15-minute interval	Values from 15-minute intervals	1-minute max within each 15-minute interval	Values from 15-minute intervals	1-minute max within each 15-minute interval	Values from 15-minute intervals	1-minute max within each 15-minute interval
February 5, 2024	Minimum	0	0	0.0	0.0	3	16	0.0	0.0	0	0	0.0	0.0	0	0	0.0	0.0	0	0
	Maximum	0	0	0.0	0.0	203	489	0.0	0.0	0	0	0.0	0.0	395	1,620	0.0	0.0	0	0
	Average	0	0	0.0	0.0	67	137	0.0	0.0	0	0	0.0	0.0	37	94	0.0	0.0	0	0
February 6, 2024	Minimum	0	0	0.0	0.0	0	0	0.0	0.0	0	0	0.0	0.0	0	0	0.0	0.0	0	0
	Maximum	160	166	0.0	0.0	293	395	0.0	0.0	0	0	0.0	0.0	580	3,393	0.0	0.0	0	0
	Average	18	21	0.0	0.0	131	206	0.0	0.0	0	0	0.0	0.0	72	341	0.0	0.0	0	0
February 7, 2024	Minimum	0	0	0.0	0.0	3	36	0.0	0.0	0	0	0.0	0.0	0	0	0.0	0.0	0	0
	Maximum	289	296	0.0	0.0	473	547	0.0	0.0	0	0	0.0	0.0	547	1,037	0.0	0.0	0	0
	Average	77	81	0.0	0.0	154	233	0.0	0.0	0	0	0.0	0.0	41	100	0.0	0.0	0	0
February 8, 2024	Minimum	0	0	0.0	0.0	14	66	0.0	0.0	0	0	0.0	0.0	0	0	0.0	0.0	0	0
	Maximum	143	148	0.0	0.0	477	557	0.0	0.0	0	0	0.0	0.0	527	2,485	0.0	0.0	0	0
	Average	21	23	0.0	0.0	180	250	0.0	0.0	0	0	0.0	0.0	48	237	0.0	0.0	0	0
February 9, 2024	Minimum	0	0	0.0	0.0	0	0	0.0	0.0	0	0	0.0	0.0	0	0	0.0	0.0	0	0
	Maximum	118	120	0.0	0.0	309	355	0.0	0.0	2	11	0.0	0.0	71	807	0.0	0.0	0	0
	Average	41	44	0.0	0.0	122	167	0.0	0.0	0	0	0.0	0.0	5	44	0.0	0.0	0	0
February 10, 2024	Minimum	120	122	0.0	0.0	0	0	0.0	0.0	0	0	0.0	0.0	0	0	0.0	0.0	0	0
	Maximum	172	192	0.0	0.0	133	249	0.0	0.0	1	4	0.0	0.0	302	1,037	0.0	0.0	0	0
	Average	153	156	0.0	0.0	11	27	0.0	0.0	0	0	0.0	0.0	27	141	0.0	0.0	0	0
February 11, 2024	Minimum	0	0	0.0	0.0	0	0	0.0	0.0	0	0	0.0	0.0	0	0	0.0	0.0	0	0
	Maximum	201	203	0.0	0.0	223	353	0.0	0.0	30	43	0.0	0.0	179	577	0.0	0.0	0	0
	Average	110	113	0.0	0.0	16	38	0.0	0.0	3	8	0.0	0.0	15	69	0.0	0.0	0	0

Notes:

- Dash/Blank data records indicate no data is available for that interval
- Calibration readings and data produced during sensor errors are excluded from the report

Perimeter Air Monitoring Weekly Report



Real-Time Multigas Monitoring Bristol Landfill Air Investigation



February 5 - February 11, 2024

Date	Daily Statistics	Bristol Met Station 1					Bristol Met Station 2				
		Wind Dir degrees	Wind Speed mph	Temp °F	RH %	Baro mbar	Wind Dir degrees	Wind Speed mph	Temp °F	RH %	Baro mbar
February 5, 2024	Minimum		0.1	39.3	24.1	940.2		0.2	37.0	23.3	943.6
	Maximum		6.1	62.8	61.0	943.6		5.6	62.5	68.1	948.0
	Average	35	3.3	52.7	38.4	941.6	93	2.2	47.5	45.9	945.3
February 6, 2024	Minimum		0.7	37.2	32.8	947.2		0.1	29.0	33.2	948.1
	Maximum		3.4	58.3	67.0	949.1		4.8	57.9	79.2	954.8
	Average	27	2.0	51.1	43.1	948.2	64	1.5	43.0	57.3	951.5
February 7, 2024	Minimum		0.1	35.8	13.9	951.8		0.1	27.6	12.7	954.5
	Maximum		3.9	65.2	69.3	955.0		4.6	64.6	82.6	958.9
	Average	48	1.2	54.6	30.3	953.4	99	1.3	42.4	53.0	956.9
February 8, 2024	Minimum		0.1	39.8	20.4	950.2		0.1	31.8	21.6	954.1
	Maximum		2.3	65.2	60.6	954.8		3.7	63.7	77.3	958.9
	Average	223	1.0	54.8	36.2	952.1	91	1.1	46.7	50.3	956.7
February 9, 2024	Minimum		0.1	43.3	54.3	948.4		0.1	43.2	58.7	952.4
	Maximum		2.4	47.8	95.0	952.7		3.2	48.0	89.0	956.7
	Average	136	0.9	45.7	79.5	950.7	4	1.1	45.6	77.2	954.6
February 10, 2024	Minimum		0.1	47.7	95.0	945.9		0.0	47.5	89.0	949.8
	Maximum		2.5	54.3	96.0	948.9		3.0	54.3	90.0	952.8
	Average	144	0.9	50.5	95.7	947.0	318	0.9	50.5	89.6	950.9
February 11, 2024	Minimum		0.0	47.9	81.3	941.2		0.1	48.2	75.1	945.1
	Maximum		5.7	56.3	96.0	945.6		9.5	56.5	90.0	949.5
	Average	43	1.9	51.3	91.5	943.4	46	1.2	51.6	84.7	947.3

Notes:

- Dash/Blank data records indicate no data is available for that interval
- Wind direction is a daily (24-hr) average value; with the origin of wind in degrees; clockwise from North calculated with vector averaging