

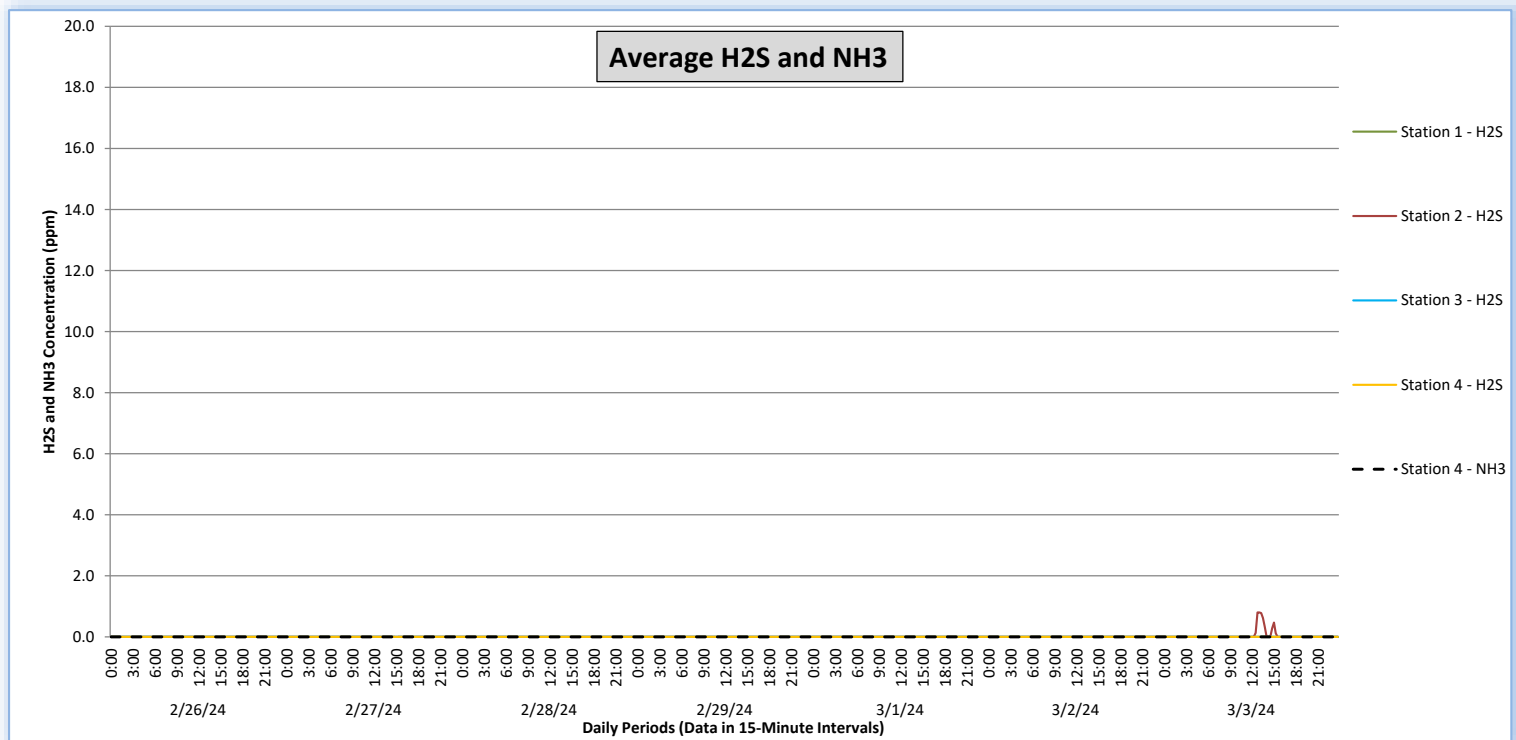
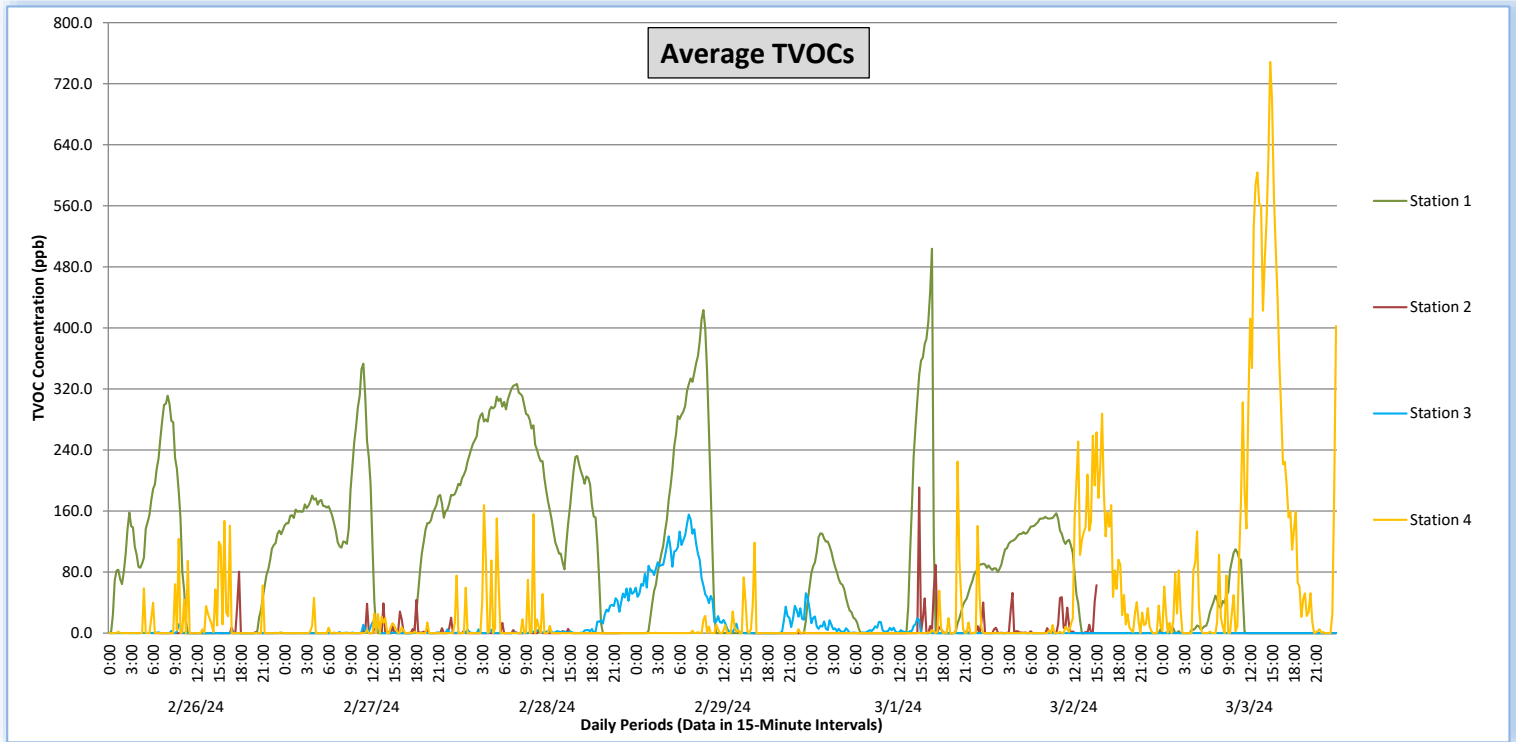


# Perimeter Air Monitoring Weekly Report

Real-Time Multigas Monitoring  
Bristol Landfill Air Investigation



February 26 - March 3, 2024



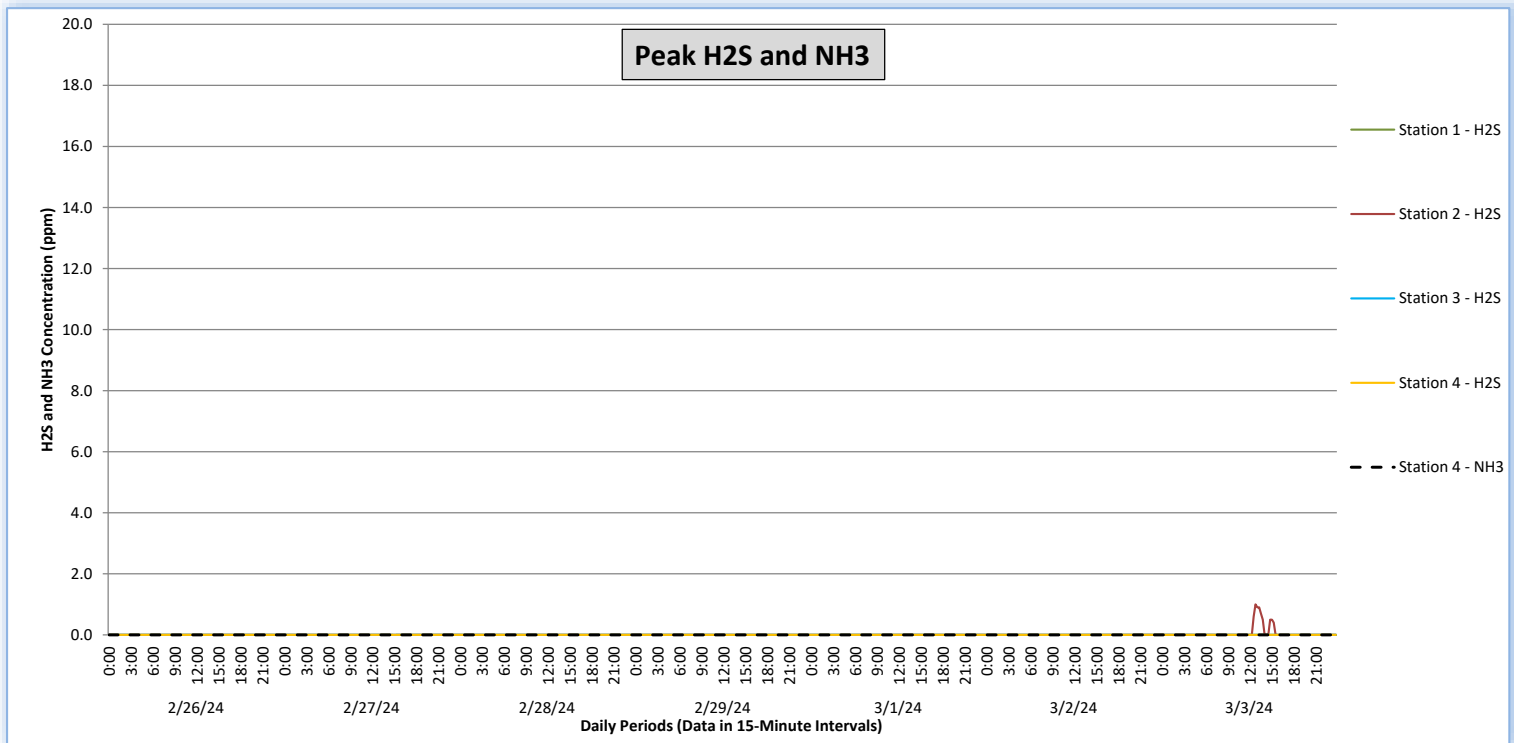
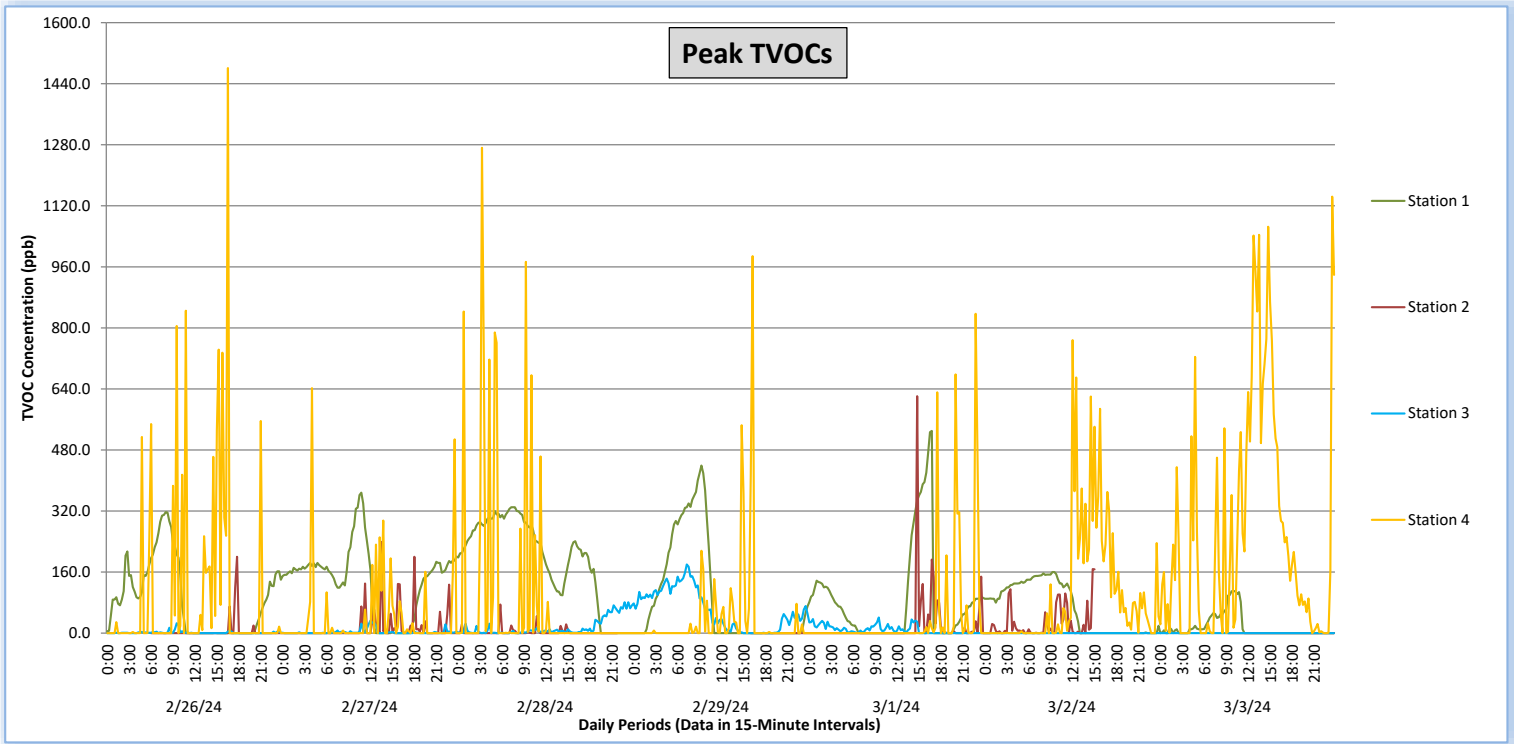
# Perimeter Air Monitoring Weekly Report



Real-Time Multigas Monitoring  
Bristol Landfill Air Investigation



February 26 - March 3, 2024





## Perimeter Air Monitoring Weekly Report

Real-Time Multigas Monitoring  
Bristol Landfill Air Investigation



February 26 - March 3, 2024

Date	Daily Statistics	Station 1				Station 2				Station 3				Station 4					
		TVOCs		H2S		TVOCs		H2S		TVOCs		H2S		TVOCs		H2S		NH3	
		Average ppb	Peak ppb	Average ppm	Peak ppm	Average ppb	Peak ppb	Average ppm	Peak ppm	Average ppb	Peak ppb	Average ppm	Peak ppm	Average ppb	Peak ppb	Average ppm	Peak ppm	Average ppm	Peak ppm
		Values from 15-minute intervals	1-minute max within each 15-minute interval	Values from 15-minute intervals	1-minute max within each 15-minute interval	Values from 15-minute intervals	1-minute max within each 15-minute interval	Values from 15-minute intervals	1-minute max within each 15-minute interval	Values from 15-minute intervals	1-minute max within each 15-minute interval	Values from 15-minute intervals	1-minute max within each 15-minute interval	Values from 15-minute intervals	1-minute max within each 15-minute interval	Values from 15-minute intervals	1-minute max within each 15-minute interval	Values from 15-minute intervals	1-minute max within each 15-minute interval
February 26, 2024	Minimum	0	0	0.0	0.0	0	0	0.0	0.0	0	0	0.0	0.0	0	0	0.0	0.0	0	0
	Maximum	311	317	0.0	0.0	81	200	0.0	0.0	12	26	0.0	0.0	147	1,481	0.0	0.0	0	0
	Average	81	89	0.0	0.0	2	6	0.0	0.0	0	1	0.0	0.0	13	103	0.0	0.0	0	0
February 27, 2024	Minimum	0	0	0.0	0.0	0	0	0.0	0.0	0	0	0.0	0.0	0	0	0.0	0.0	0	0
	Maximum	353	368	0.0	0.0	44	239	0.0	0.0	17	33	0.0	0.0	76	642	0.0	0.0	0	0
	Average	131	139	0.0	0.0	3	15	0.0	0.0	1	3	0.0	0.0	3	36	0.0	0.0	0	0
February 28, 2024	Minimum	0	0	0.0	0.0	0	0	0.0	0.0	0	0	0.0	0.0	0	0	0.0	0.0	0	0
	Maximum	326	330	0.0	0.0	14	75	0.0	0.0	59	81	0.0	0.0	168	1,272	0.0	0.0	0	0
	Average	184	191	0.0	0.0	0	3	0.0	0.0	9	16	0.0	0.0	11	87	0.0	0.0	0	0
February 29, 2024	Minimum	0	0	0.0	0.0	0	0	0.0	0.0	0	0	0.0	0.0	0	0	0.0	0.0	0	0
	Maximum	423	439	0.0	0.0	0	0	0.0	0.0	155	180	0.0	0.0	119	988	0.0	0.0	0	0
	Average	88	94	0.0	0.0	0	0	0.0	0.0	47	61	0.0	0.0	4	38	0.0	0.0	0	0
March 1, 2024	Minimum	0	0	0.0	0.0	0	0	0.0	0.0	0	0	0.0	0.0	0	0	0.0	0.0	0	0
	Maximum	504	530	0.0	0.0	191	621	0.0	0.0	22	41	0.0	0.0	225	837	0.0	0.0	0	0
	Average	77	86	0.0	0.0	5	18	0.0	0.0	4	9	0.0	0.0	7	40	0.0	0.0	0	0
March 2, 2024	Minimum	0	0	0.0	0.0	0	0	0.0	0.0	0	0	0.0	0.0	0	0	0.0	0.0	0	0
	Maximum	157	160	0.0	0.0	63	168	0.0	0.0	0	0	0.0	0.0	288	768	0.0	0.0	0	0
	Average	64	66	0.0	0.0	7	25	0.0	0.0	0	0	0.0	0.0	47	104	0.0	0.0	0	0
March 3, 2024	Minimum	0	0	0.0	0.0	0	0	0.0	0.0	0	0	0.0	0.0	0	0	0.0	0.0	0	0
	Maximum	110	110	0.0	0.0	0	0	0.8	1.0	0	0	0.0	0.0	749	1,144	0.0	0.0	0	0
	Average	13	16	0.0	0.0	0	0	0.0	0.1	0	0	0.0	0.0	144	264	0.0	0.0	0	0

**Notes:**

- Dash/Blank data records indicate no data is available for that interval
- Calibration readings and data produced during sensor errors are excluded from the report

# Perimeter Air Monitoring Weekly Report



## Real-Time Multigas Monitoring Bristol Landfill Air Investigation



February 26 - March 3, 2024

Date	Daily Statistics	Bristol Met Station 1					Bristol Met Station 2				
		Wind Dir degrees	Wind Speed mph	Temp °F	RH %	Baro mbar	Wind Dir degrees	Wind Speed mph	Temp °F	RH %	Baro mbar
February 26, 2024	Minimum		0.2	38.4	37.9	945.1		0.1	37.6	41.0	948.8
	Maximum		2.1	67.0	82.0	948.9		2.1	64.4	83.0	952.6
	Average	207	0.9	51.4	61.7	947.1	94	0.7	49.5	66.8	950.9
February 27, 2024	Minimum		0.0	43.6	51.3	938.8		0.1	42.8	52.1	942.5
	Maximum		2.8	68.5	92.3	945.1		2.8	68.1	84.6	948.8
	Average	119	1.2	55.0	71.6	941.5	95	1.0	54.7	70.9	945.1
February 28, 2024	Minimum		0.1	31.5	51.5	937.3		0.2	31.4	39.7	941.0
	Maximum		5.3	66.0	94.0	955.7		8.2	66.0	88.0	959.5
	Average	302	1.9	51.5	77.0	943.3	301	2.9	51.6	71.2	947.0
February 29, 2024	Minimum		0.3	28.5	30.9	955.8		0.2	25.4	31.0	959.6
	Maximum		3.6	46.7	72.5	961.9		3.0	45.1	73.9	965.7
	Average	0	1.6	38.2	47.3	959.4	11	1.1	34.8	52.5	962.9
March 1, 2024	Minimum		0.7	34.6	41.7	952.7		0.4	35.3	38.0	956.4
	Maximum		8.9	51.7	93.0	958.4		12.8	52.8	85.0	962.2
	Average	41	2.7	42.6	70.7	955.7	98	3.3	43.0	65.5	959.5
March 2, 2024	Minimum		0.1	43.7	69.6	950.2		0.1	44.1	70.8	953.9
	Maximum		4.9	61.1	92.0	952.5		4.2	60.1	85.7	956.3
	Average	33	1.7	50.8	85.4	951.3	60	1.8	50.4	81.4	955.0
March 3, 2024	Minimum		0.2	37.4	28.1	949.9		0.1	37.9	28.6	953.6
	Maximum		3.0	72.8	96.0	953.3		4.1	71.5	89.8	957.1
	Average	344	1.1	53.5	71.2	951.4	327	0.9	52.6	70.4	955.1

**Notes:**

- Dash/Blank data records indicate no data is available for that interval
- Wind direction is a daily (24-hr) average value; with the origin of wind in degrees; clockwise from North calculated with vector averaging