

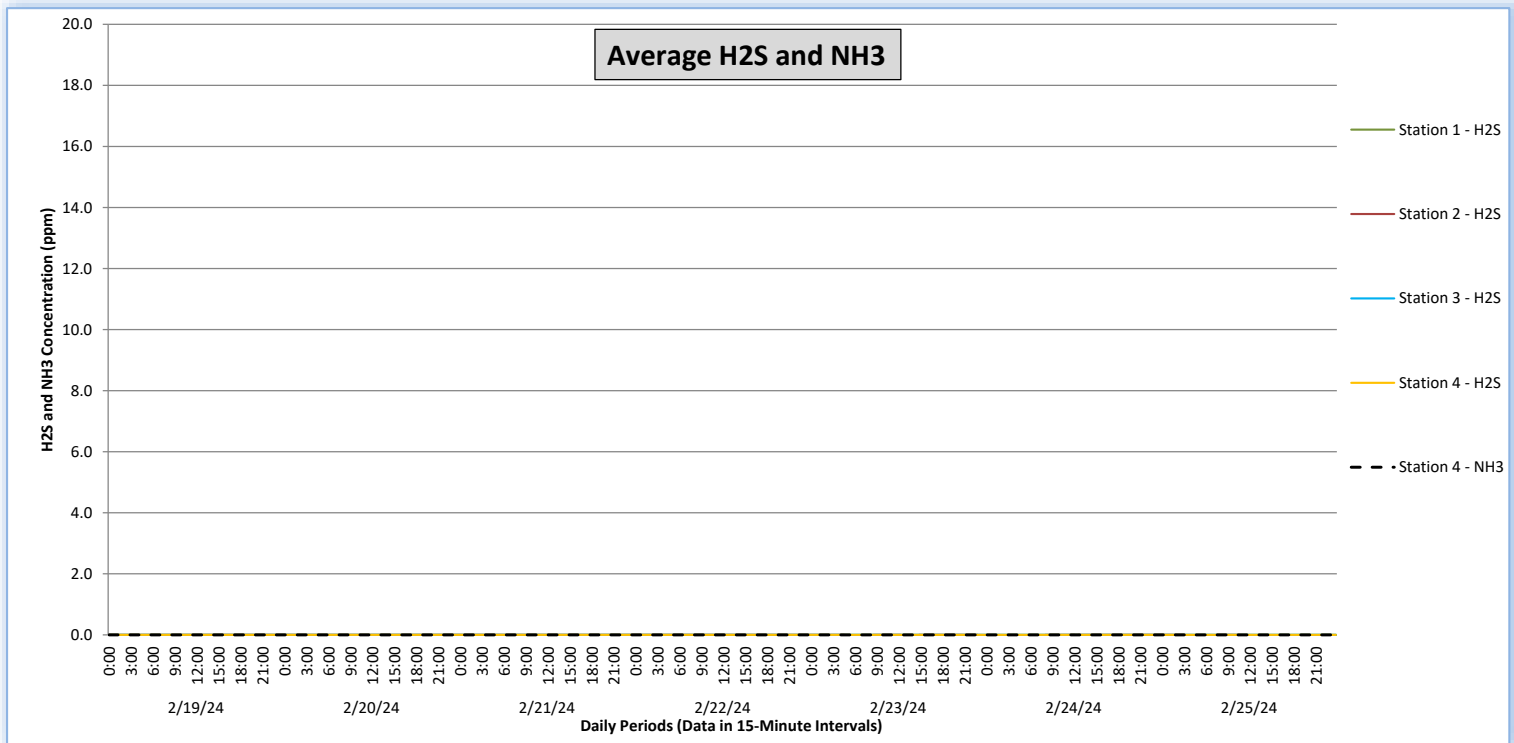
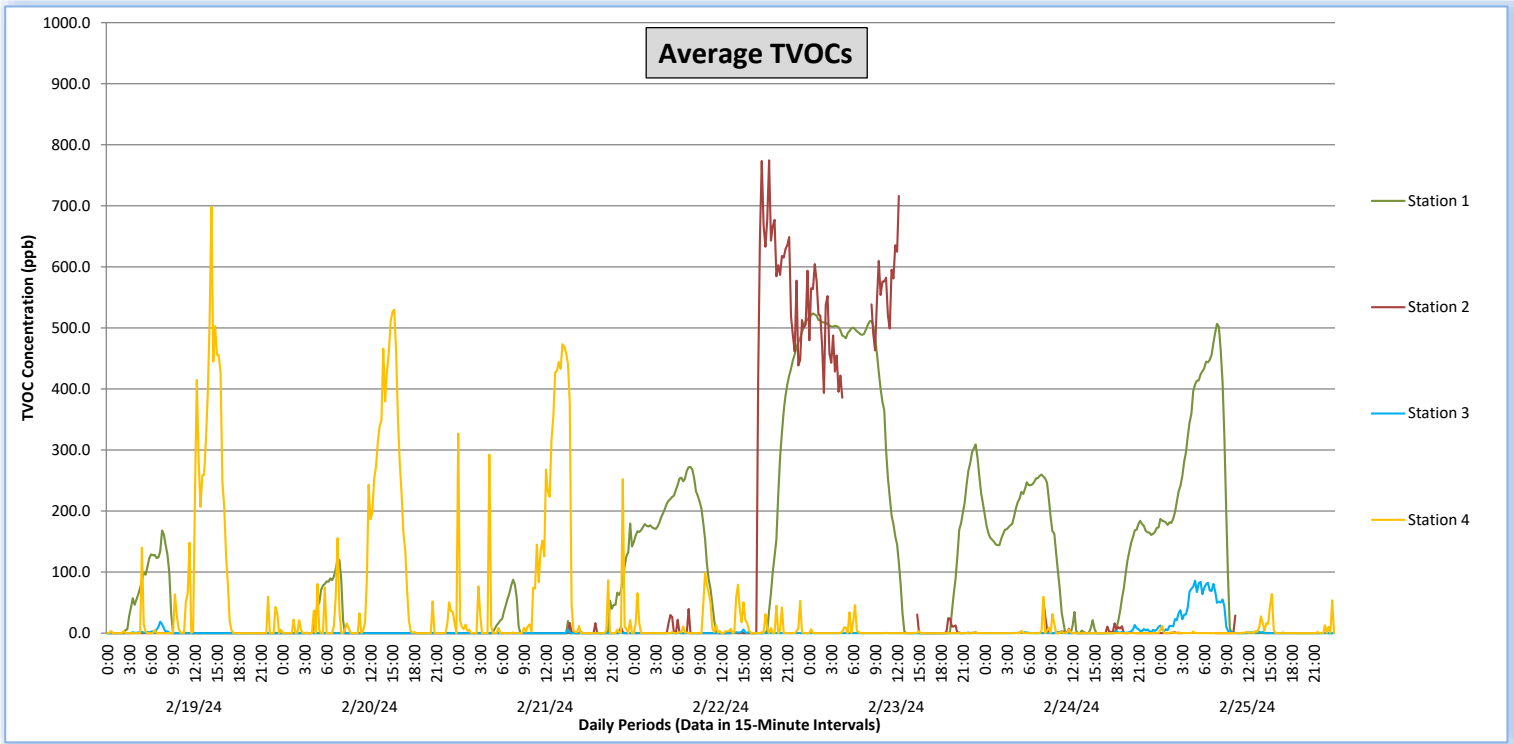
Perimeter Air Monitoring Weekly Report



Real-Time Multigas Monitoring
Bristol Landfill Air Investigation



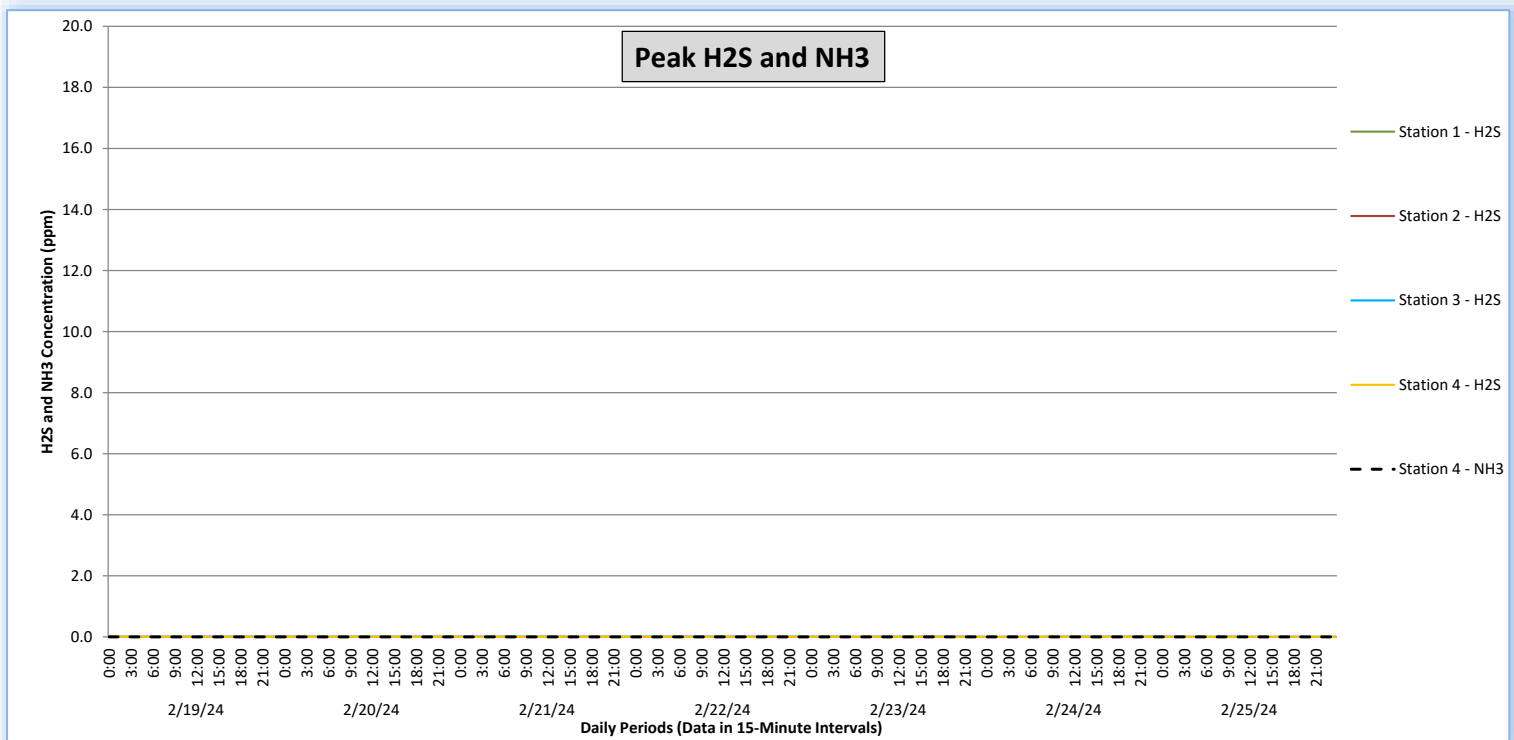
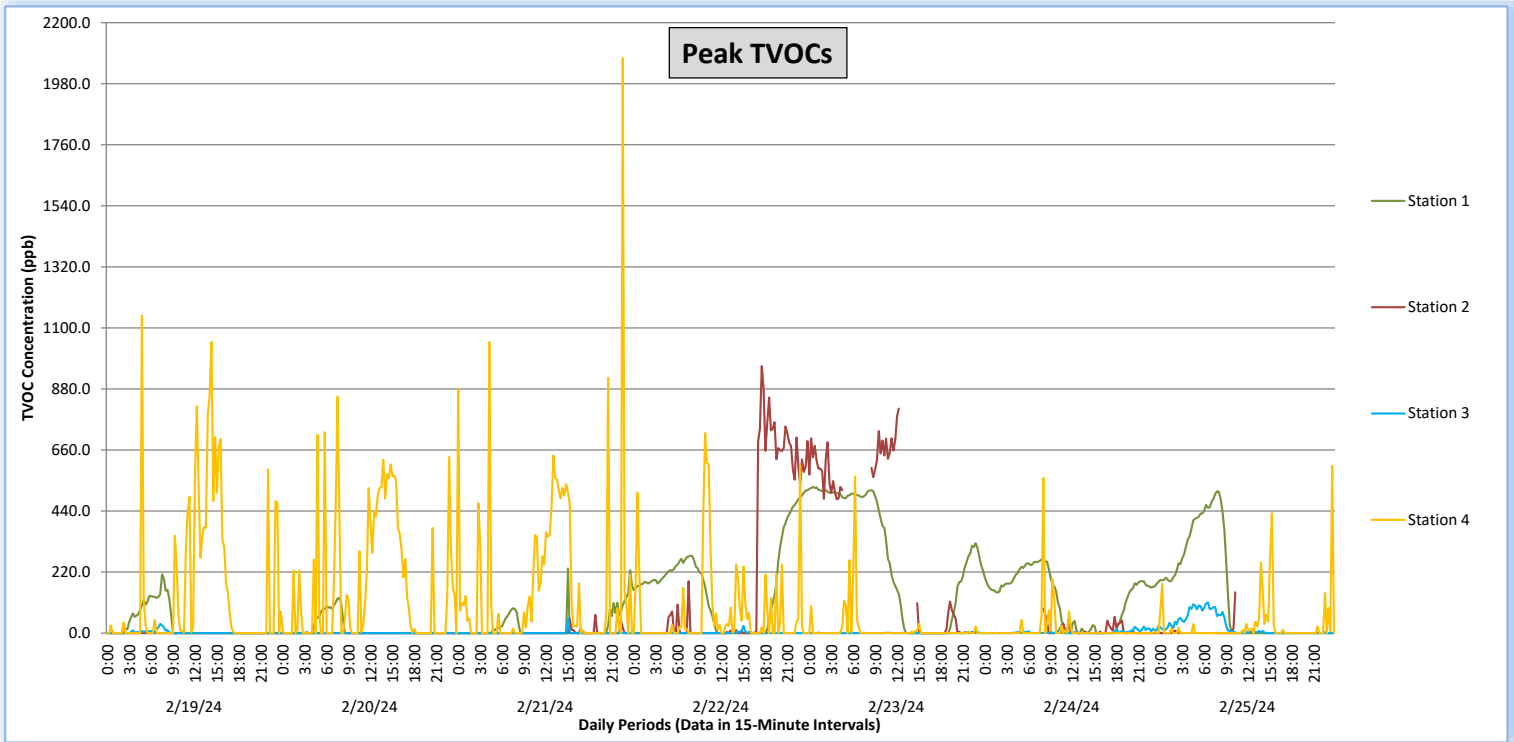
February 19 - February 25, 2024



Perimeter Air Monitoring Weekly Report

Real-Time Multigas Monitoring
Bristol Landfill Air Investigation

February 19 - February 25, 2024





Perimeter Air Monitoring Weekly Report

Real-Time Multigas Monitoring
Bristol Landfill Air Investigation



February 19 - February 25, 2024

Date	Daily Statistics	Station 1				Station 2				Station 3				Station 4					
		TVOCs		H2S		TVOCs		H2S		TVOCs		H2S		TVOCs		H2S		NH3	
		Average ppb	Peak ppb	Average ppm	Peak ppm	Average ppb	Peak ppb	Average ppm	Peak ppm	Average ppb	Peak ppb	Average ppm	Peak ppm	Average ppb	Peak ppb	Average ppm	Peak ppm	Average ppm	Peak ppm
		Values from 15-minute intervals	1-minute max within each 15-minute interval	Values from 15-minute intervals	1-minute max within each 15-minute interval	Values from 15-minute intervals	1-minute max within each 15-minute interval	Values from 15-minute intervals	1-minute max within each 15-minute interval	Values from 15-minute intervals	1-minute max within each 15-minute interval	Values from 15-minute intervals	1-minute max within each 15-minute interval	Values from 15-minute intervals	1-minute max within each 15-minute interval	Values from 15-minute intervals	1-minute max within each 15-minute interval	Values from 15-minute intervals	1-minute max within each 15-minute interval
February 19, 2024	Minimum	0	0	0.0	0.0	0	0	0.0	0.0	0	0	0.0	0.0	0	0	0.0	0.0	0	0
	Maximum	168	212	0.0	0.0	0	0	0.0	0.0	19	33	0.0	0.0	698	1,144	0.0	0.0	0	0
	Average	25	28	0.0	0.0	0	0	0.0	0.0	1	2	0.0	0.0	75	157	0.0	0.0	0	0
February 20, 2024	Minimum	0	0	0.0	0.0	0	0	0.0	0.0	0	0	0.0	0.0	0	0	0.0	0.0	0	0
	Maximum	121	126	0.0	0.0	0	0	0.0	0.0	0	2	0.0	0.0	530	852	0.0	0.0	0	0
	Average	13	15	0.0	0.0	0	0	0.0	0.0	0	0	0.0	0.0	84	176	0.0	0.0	0	0
February 21, 2024	Minimum	0	0	0.0	0.0	0	0	0.0	0.0	0	0	0.0	0.0	0	0	0.0	0.0	0	0
	Maximum	180	233	0.0	0.0	17	66	0.0	0.0	6	54	0.0	0.0	473	2,072	0.0	0.0	0	0
	Average	19	25	0.0	0.0	1	2	0.0	0.0	0	1	0.0	0.0	78	170	0.0	0.0	0	0
February 22, 2024	Minimum	0	0	0.0	0.0	0	0	0.0	0.0	0	0	0.0	0.0	0	0	0.0	0.0	0	0
	Maximum	513	515	0.0	0.0	774	962	0.0	0.0	6	26	0.0	0.0	99	721	0.0	0.0	0	0
	Average	170	176	0.0	0.0	174	207	0.0	0.0	0	1	0.0	0.0	10	73	0.0	0.0	0	0
February 23, 2024	Minimum	0	0	0.0	0.0	0	0	0.0	0.0	0	0	0.0	0.0	0	0	0.0	0.0	0	0
	Maximum	524	527	0.0	0.0	716	809	0.0	0.0	1	5	0.0	0.0	46	565	0.0	0.0	0	0
	Average	271	278	0.0	0.0	272	326	0.0	0.0	0	0	0.0	0.0	1	16	0.0	0.0	0	0
February 24, 2024	Minimum	0	0	0.0	0.0	0	0	0.0	0.0	0	0	0.0	0.0	0	0	0.0	0.0	0	0
	Maximum	260	266	0.0	0.0	54	88	0.0	0.0	13	26	0.0	0.0	60	559	0.0	0.0	0	0
	Average	120	127	0.0	0.0	3	11	0.0	0.0	1	4	0.0	0.0	1	13	0.0	0.0	0	0
February 25, 2024	Minimum	0	0	0.0	0.0	0	0	0.0	0.0	0	0	0.0	0.0	0	0	0.0	0.0	0	0
	Maximum	507	511	0.0	0.0	29	147	0.0	0.0	86	111	0.0	0.0	64	603	0.0	0.0	0	0
	Average	129	135	0.0	0.0	1	7	0.0	0.0	18	25	0.0	0.0	3	28	0.0	0.0	0	0

Notes:

- Dash/Blank data records indicate no data is available for that interval
- Calibration readings and data produced during sensor errors are excluded from the report

Perimeter Air Monitoring Weekly Report



Real-Time Multigas Monitoring Bristol Landfill Air Investigation



February 19 - February 25, 2024

Date	Daily Statistics	Bristol Met Station 1					Bristol Met Station 2				
		Wind Dir degrees	Wind Speed mph	Temp °F	RH %	Baro mbar	Wind Dir degrees	Wind Speed mph	Temp °F	RH %	Baro mbar
February 19, 2024	Minimum		0.2	32.1	22.7	950.3		0.2	20.3	23.7	952.8
	Maximum		2.4	55.1	66.5	952.3		3.1	55.1	82.8	956.4
	Average	330	1.3	47.2	34.3	951.3	354	1.1	35.7	57.1	954.7
February 20, 2024	Minimum		0.4	37.3	18.5	953.4		0.1	24.6	18.8	956.1
	Maximum		3.5	60.7	57.1	955.7		6.2	58.4	78.9	959.4
	Average	317	1.6	53.9	28.4	954.4	332	1.6	40.3	51.8	957.9
February 21, 2024	Minimum		0.2	40.8	26.2	934.9		0.1	29.6	28.0	952.8
	Maximum		2.1	61.8	60.7	956.8		4.2	60.3	77.6	960.5
	Average	241	1.1	55.1	34.9	953.2	19	1.4	44.0	53.6	957.3
February 22, 2024	Minimum		0.1	44.8	28.0	902.2		0.1	37.9	29.6	939.1
	Maximum		5.2	68.7	95.0	945.3		8.0	67.7	89.0	952.9
	Average	253	1.6	57.3	57.0	938.8	300	1.7	51.5	59.1	946.3
February 23, 2024	Minimum		0.1	43.1	45.1	932.1		0.1	40.2	42.7	935.7
	Maximum		3.7	56.6	96.0	935.9		6.2	56.4	89.0	941.4
	Average	356	1.6	50.3	79.5	934.1	295	3.0	49.2	75.4	938.2
February 24, 2024	Minimum		0.9	35.2	65.6	938.8		0.1	33.4	57.3	941.2
	Maximum		5.6	45.4	80.8	945.9		7.0	44.3	77.5	953.0
	Average	335	2.4	41.1	72.5	941.0	300	2.6	39.1	68.7	945.3
February 25, 2024	Minimum		0.1	32.4	30.2	947.1		0.1	23.1	30.0	950.8
	Maximum		3.0	55.3	76.0	951.2		4.9	54.7	84.0	955.0
	Average	210	1.1	46.8	46.4	948.8	29	1.2	39.8	58.5	952.8

Notes:

- Dash/Blank data records indicate no data is available for that interval
- Wind direction is a daily (24-hr) average value; with the origin of wind in degrees; clockwise from North calculated with vector averaging