

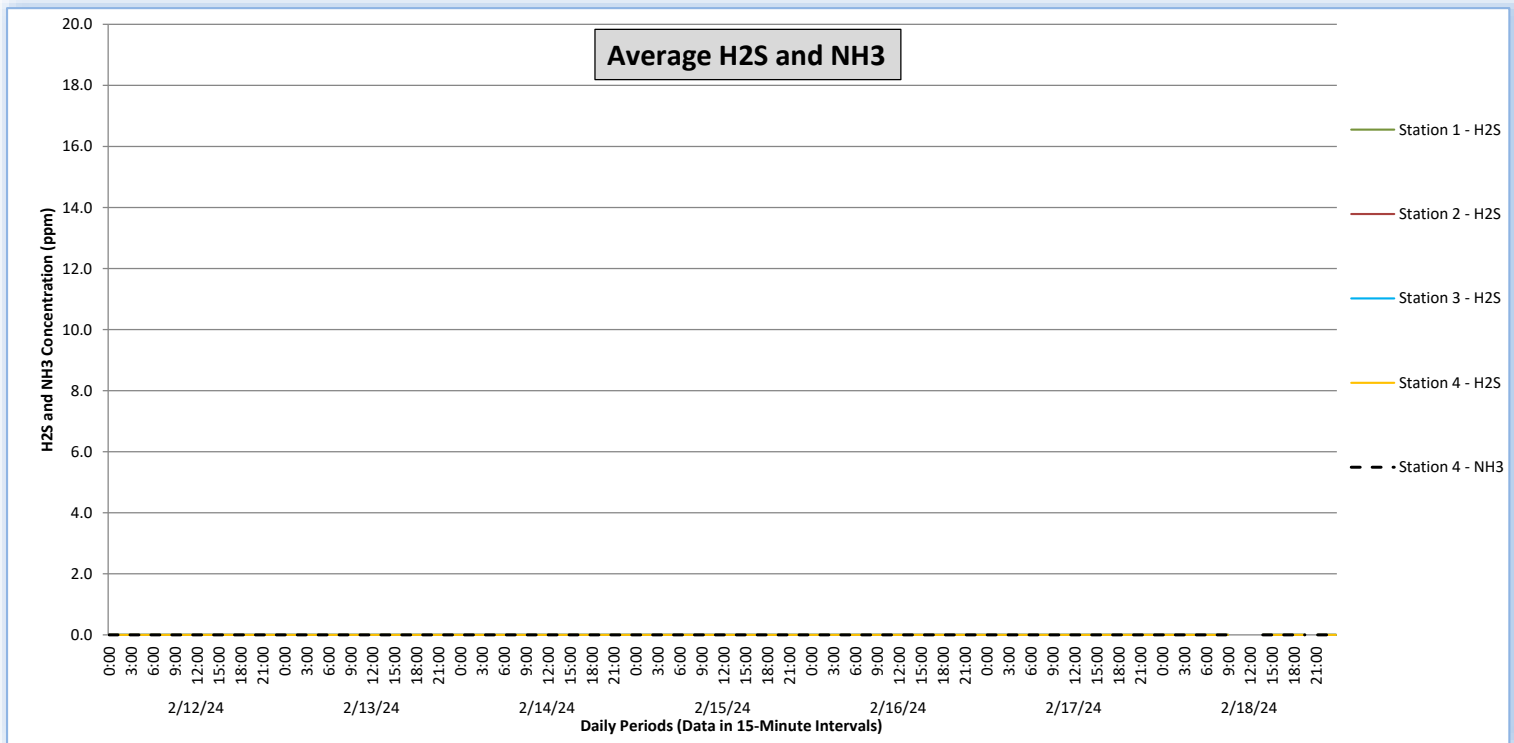
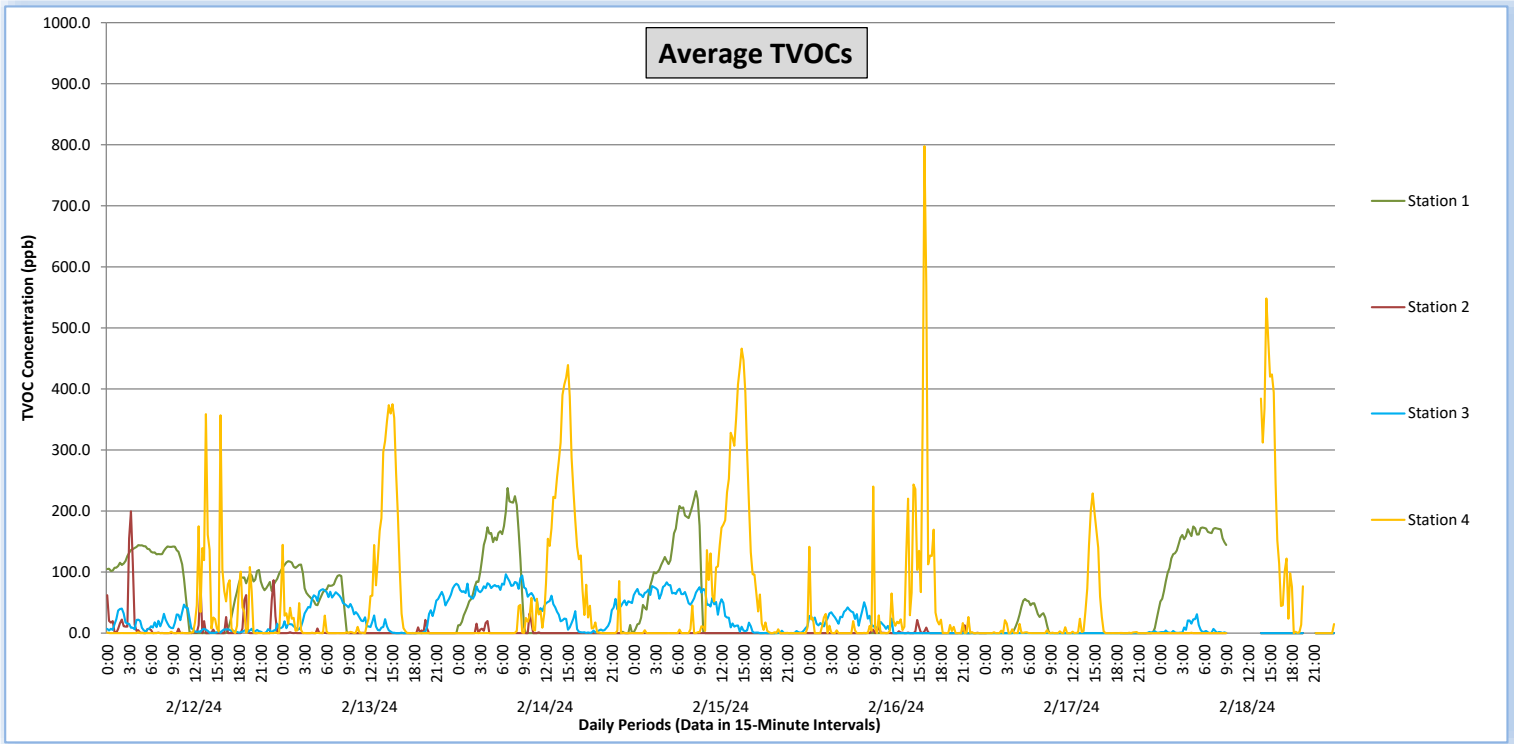
Perimeter Air Monitoring Weekly Report



Real-Time Multigas Monitoring
Bristol Landfill Air Investigation



February 12 - February 18, 2024



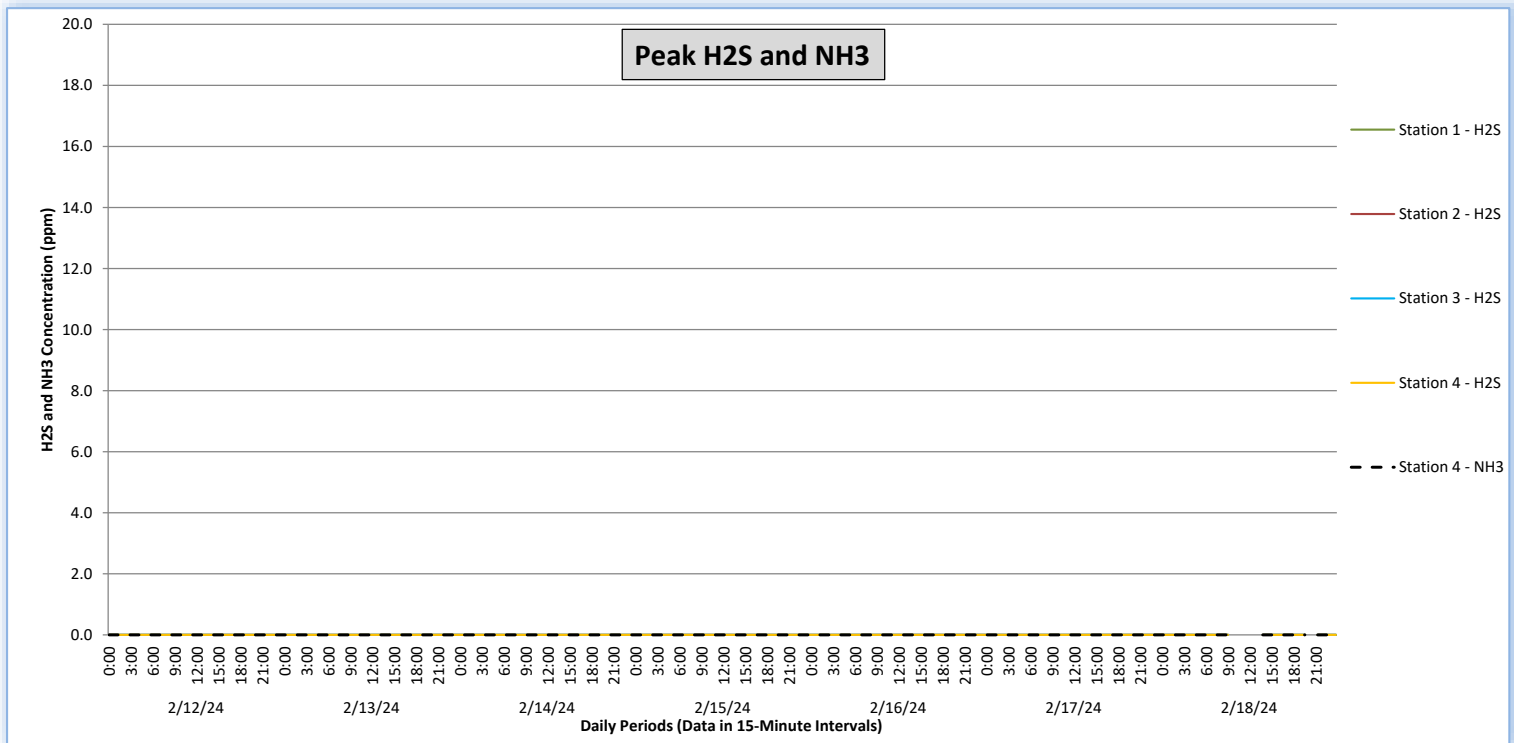
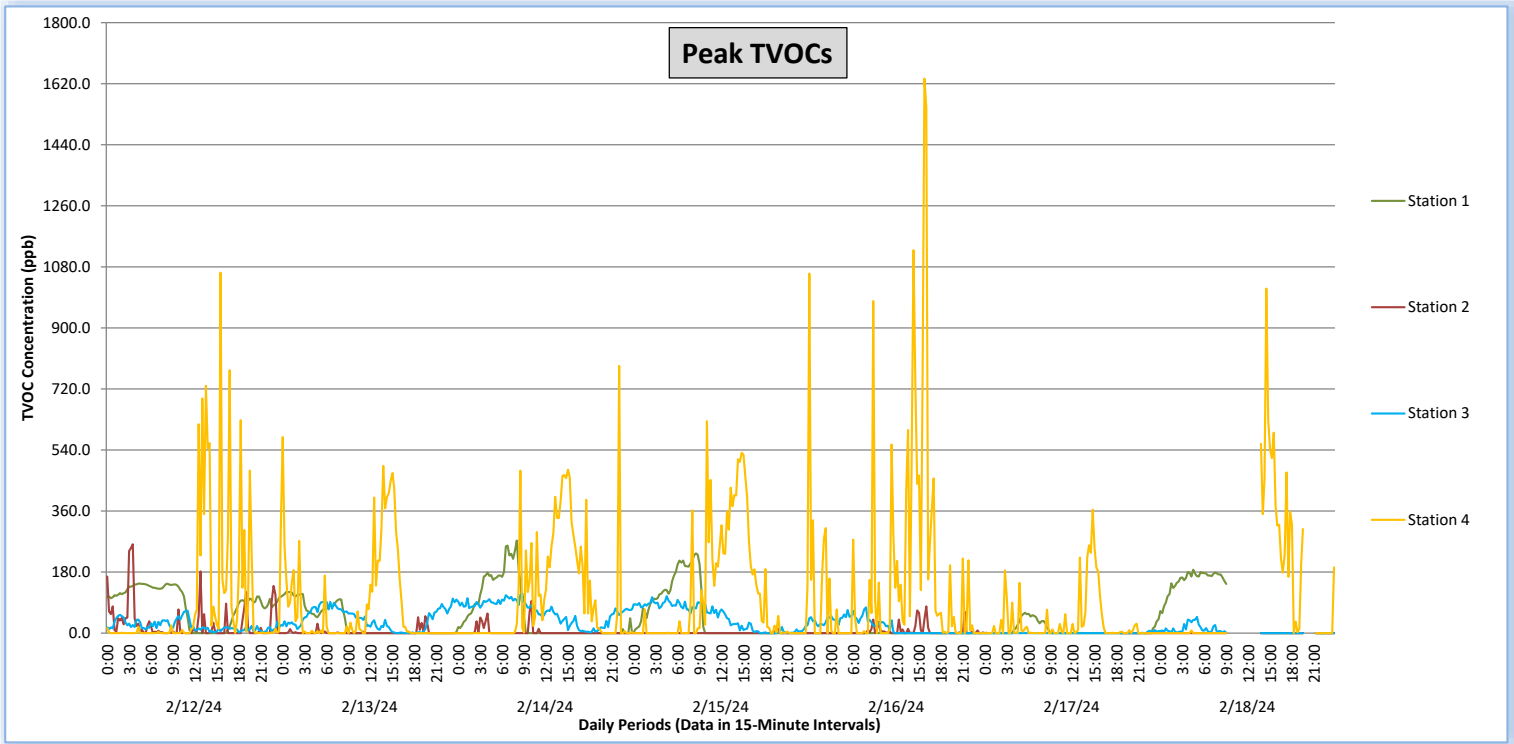


Perimeter Air Monitoring Weekly Report

Real-Time Multigas Monitoring
Bristol Landfill Air Investigation



February 12 - February 18, 2024





Perimeter Air Monitoring Weekly Report

Real-Time Multigas Monitoring Bristol Landfill Air Investigation



February 12 - February 18, 2024

Date	Daily Statistics	Station 1				Station 2				Station 3				Station 4					
		TVOCs		H2S		TVOCs		H2S		TVOCs		H2S		TVOCs		H2S		NH3	
		Average ppb	Peak ppb	Average ppm	Peak ppm	Average ppb	Peak ppb	Average ppm	Peak ppm	Average ppb	Peak ppb	Average ppm	Peak ppm	Average ppb	Peak ppb	Average ppm	Peak ppm	Average ppm	Peak ppm
		Values from 15-minute intervals	1-minute max within each 15-minute interval	Values from 15-minute intervals	1-minute max within each 15-minute interval	Values from 15-minute intervals	1-minute max within each 15-minute interval	Values from 15-minute intervals	1-minute max within each 15-minute interval	Values from 15-minute intervals	1-minute max within each 15-minute interval	Values from 15-minute intervals	1-minute max within each 15-minute interval	Values from 15-minute intervals	1-minute max within each 15-minute interval	Values from 15-minute intervals	1-minute max within each 15-minute interval	Values from 15-minute intervals	1-minute max within each 15-minute interval
February 12, 2024	Minimum	0	0	0.0	0.0	0	0	0.0	0.0	0	2	0.0	0.0	0	0	0.0	0.0	0	0
	Maximum	144	146	0.0	0.0	200	262	0.0	0.0	47	66	0.0	0.0	359	1,063	0.0	0.0	0	0
	Average	82	86	0.0	0.0	12	28	0.0	0.0	11	21	0.0	0.0	26	96	0.0	0.0	0	0
February 13, 2024	Minimum	0	0	0.0	0.0	0	0	0.0	0.0	0	0	0.0	0.0	0	0	0.0	0.0	0	0
	Maximum	118	122	0.0	0.0	22	50	0.0	0.0	81	102	0.0	0.0	375	578	0.0	0.0	0	0
	Average	30	32	0.0	0.0	1	2	0.0	0.0	30	43	0.0	0.0	45	82	0.0	0.0	0	0
February 14, 2024	Minimum	0	0	0.0	0.0	0	0	0.0	0.0	0	2	0.0	0.0	0	0	0.0	0.0	0	0
	Maximum	238	273	0.0	0.0	32	95	0.0	0.0	96	118	0.0	0.0	439	788	0.0	0.0	0	0
	Average	48	53	0.0	0.0	1	4	0.0	0.0	48	62	0.0	0.0	60	110	0.0	0.0	0	0
February 15, 2024	Minimum	0	0	0.0	0.0	0	0	0.0	0.0	0	0	0.0	0.0	0	0	0.0	0.0	0	0
	Maximum	233	235	0.0	0.0	2	13	0.0	0.0	83	109	0.0	0.0	466	625	0.0	0.0	0	0
	Average	49	53	0.0	0.0	0	0	0.0	0.0	35	47	0.0	0.0	67	114	0.0	0.0	0	0
February 16, 2024	Minimum	0	0	0.0	0.0	0	0	0.0	0.0	0	0	0.0	0.0	0	0	0.0	0.0	0	0
	Maximum	0	0	0.0	0.0	22	79	0.0	0.0	51	76	0.0	0.0	798	1,635	0.0	0.0	0	0
	Average	0	0	0.0	0.0	1	6	0.0	0.0	11	18	0.0	0.0	46	172	0.0	0.0	0	0
February 17, 2024	Minimum	0	0	0.0	0.0	0	0	0.0	0.0	0	0	0.0	0.0	0	0	0.0	0.0	0	0
	Maximum	56	60	0.0	0.0	0	1	0.0	0.0	3	9	0.0	0.0	229	364	0.0	0.0	0	0
	Average	8	9	0.0	0.0	0	0	0.0	0.0	0	0	0.0	0.0	15	33	0.0	0.0	0	0
February 18, 2024	Minimum	0	0	0.0	0.0	0	0	0.0	0.0	0	0	0.0	0.0	0	0	0.0	0.0	0	0
	Maximum	175	187	0.0	0.0	0	0	0.0	0.0	31	48	0.0	0.0	548	1,016	0.0	0.0	0	0
	Average	75	79	0.0	0.0	0	0	0.0	0.0	3	7	0.0	0.0	62	116	0.0	0.0	0	0

Notes:

- Dash/Blank data records indicate no data is available for that interval
- Calibration readings and data produced during sensor errors are excluded from the report

Perimeter Air Monitoring Weekly Report



Real-Time Multigas Monitoring Bristol Landfill Air Investigation



February 12 - February 18, 2024

Date	Daily Statistics	Bristol Met Station 1					Bristol Met Station 2				
		Wind Dir degrees	Wind Speed mph	Temp °F	RH %	Baro mbar	Wind Dir degrees	Wind Speed mph	Temp °F	RH %	Baro mbar
February 12, 2024	Minimum		0.1	47.7	82.8	927.9		0.1	48.2	75.4	931.7
	Maximum		3.9	59.1	95.0	942.0		6.2	59.0	89.0	945.9
	Average	41	1.7	52.6	90.6	936.7	56	1.4	52.8	84.5	940.6
February 13, 2024	Minimum		0.0	34.6	42.5	929.0		0.2	32.1	40.9	932.9
	Maximum		4.0	48.1	95.6	949.4		7.1	48.4	88.0	953.7
	Average	312	2.4	41.8	68.9	942.1	299	3.9	41.0	66.2	946.4
February 14, 2024	Minimum		0.2	36.1	43.0	951.7		0.1	28.1	42.6	953.8
	Maximum		4.0	56.0	83.0	954.5		5.6	56.0	85.0	958.4
	Average	290	1.8	47.4	58.6	952.8	305	1.8	40.8	68.3	956.1
February 15, 2024	Minimum		0.2	37.2	35.1	946.5		0.1	30.6	35.5	950.3
	Maximum		3.1	62.3	86.7	951.5		6.5	61.6	85.8	956.9
	Average	290	1.4	54.5	50.1	948.6	305	2.0	46.5	62.3	953.5
February 16, 2024	Minimum		0.1	37.5	40.6	632.4		0.1	35.0	38.8	941.0
	Maximum		4.4	52.9	90.5	948.8		5.1	52.7	83.6	952.9
	Average	340	1.2	46.0	60.7	940.3	7	1.0	44.4	62.9	948.5
February 17, 2024	Minimum		1.0	30.8	51.4	899.1		0.0	23.3	50.6	942.0
	Maximum		5.6	45.8	91.4	947.6		5.4	46.2	84.0	952.6
	Average	17	3.2	35.0	70.6	944.1	308	2.5	32.1	68.1	949.6
February 18, 2024	Minimum		1.1	37.6	30.7	945.9		0.3	20.0	29.7	949.7
	Maximum		2.4	44.7	42.2	947.4		4.0	43.5	83.0	953.9
	Average	240	1.6	42.5	34.6	946.6	317	1.1	28.9	64.7	951.8

Notes:

- Dash/Blank data records indicate no data is available for that interval
- Wind direction is a daily (24-hr) average value; with the origin of wind in degrees; clockwise from North calculated with vector averaging