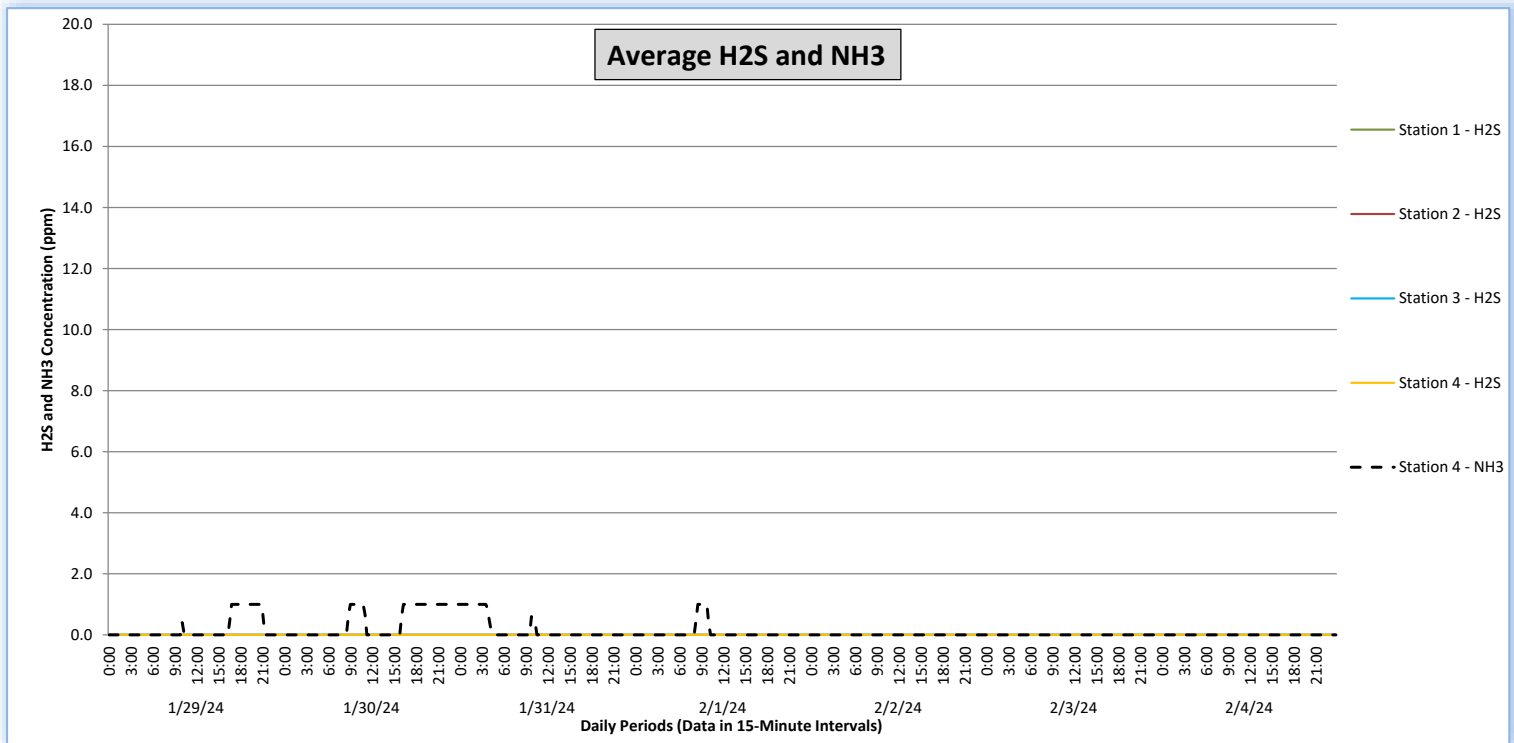
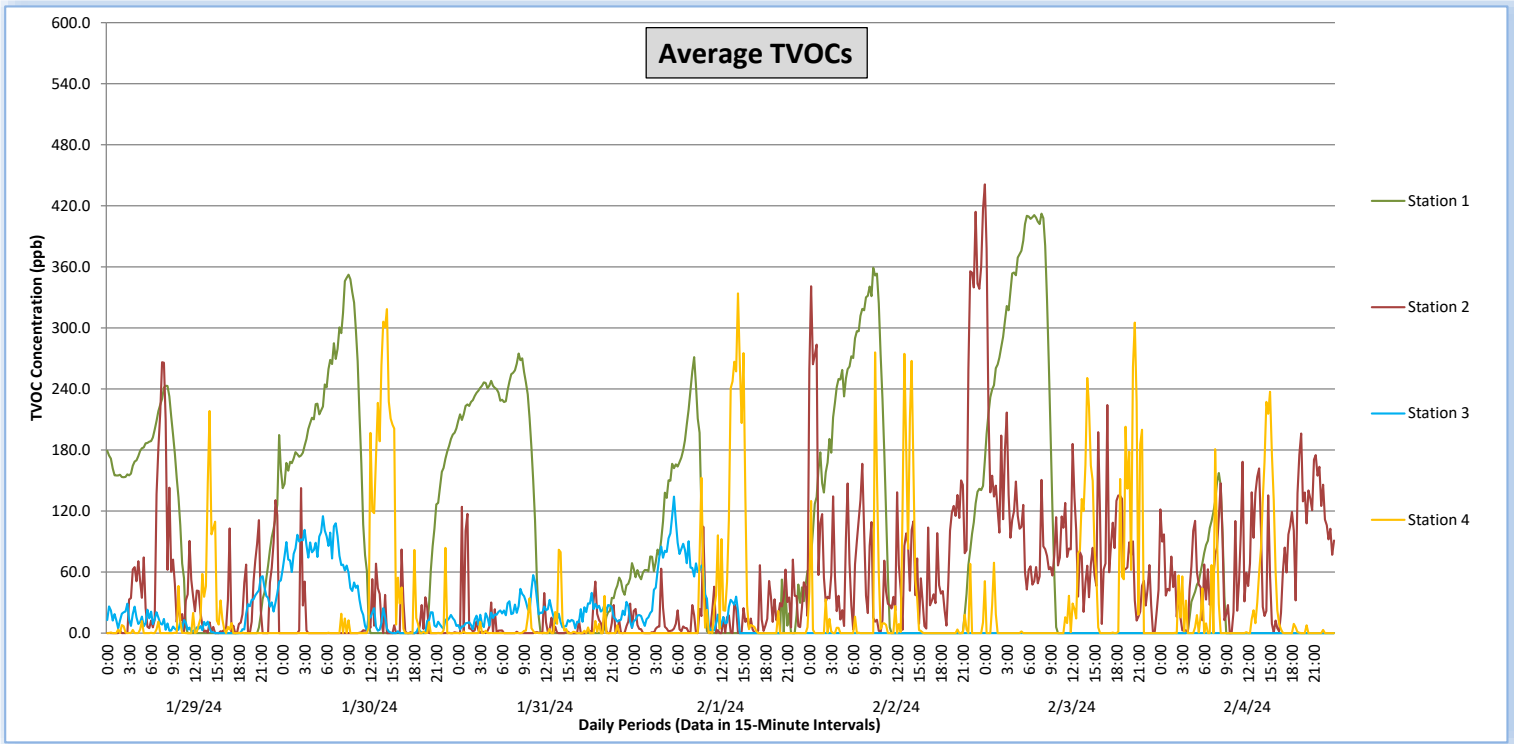


Perimeter Air Monitoring Weekly Report

Real-Time Multigas Monitoring
Bristol Landfill Air Investigation

January 29 - February 4, 2024



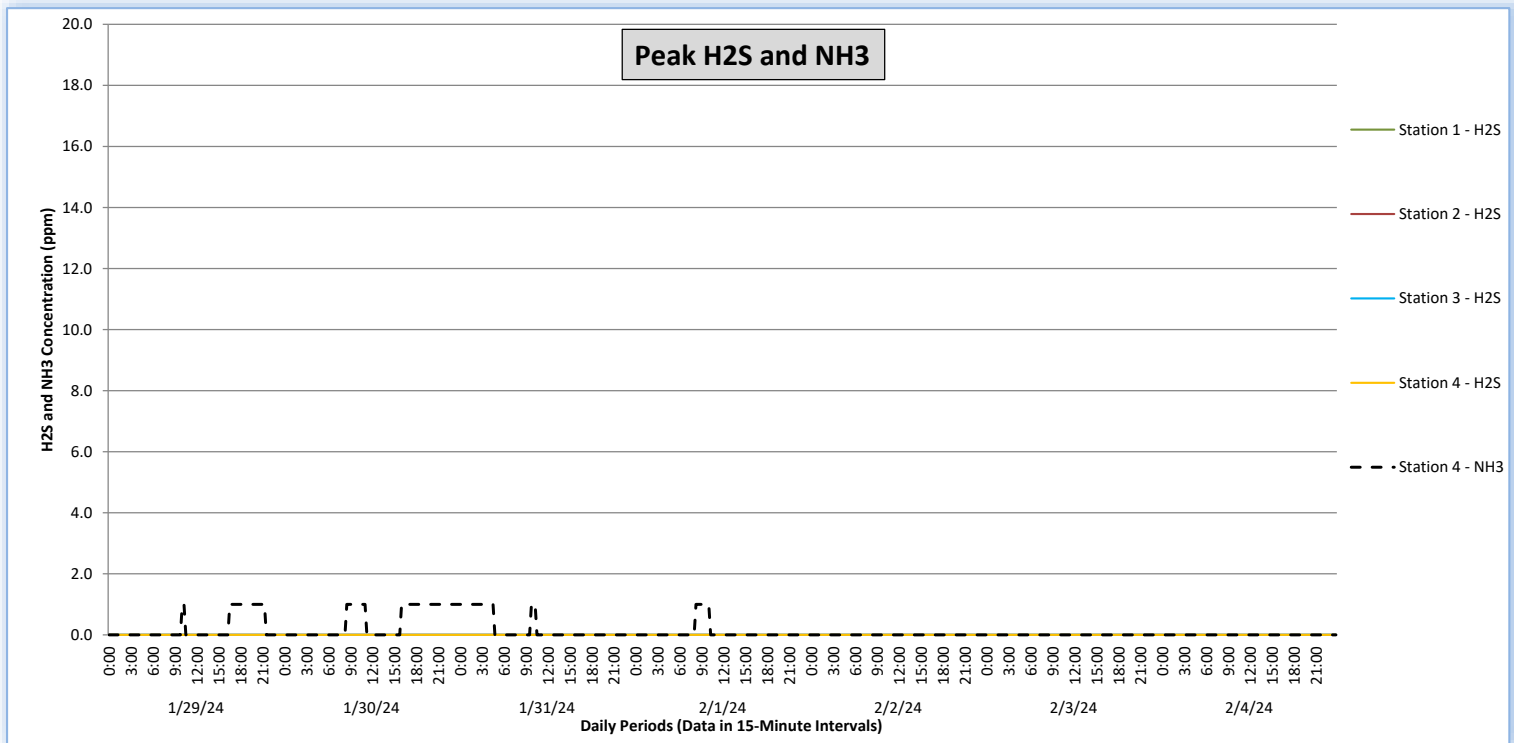
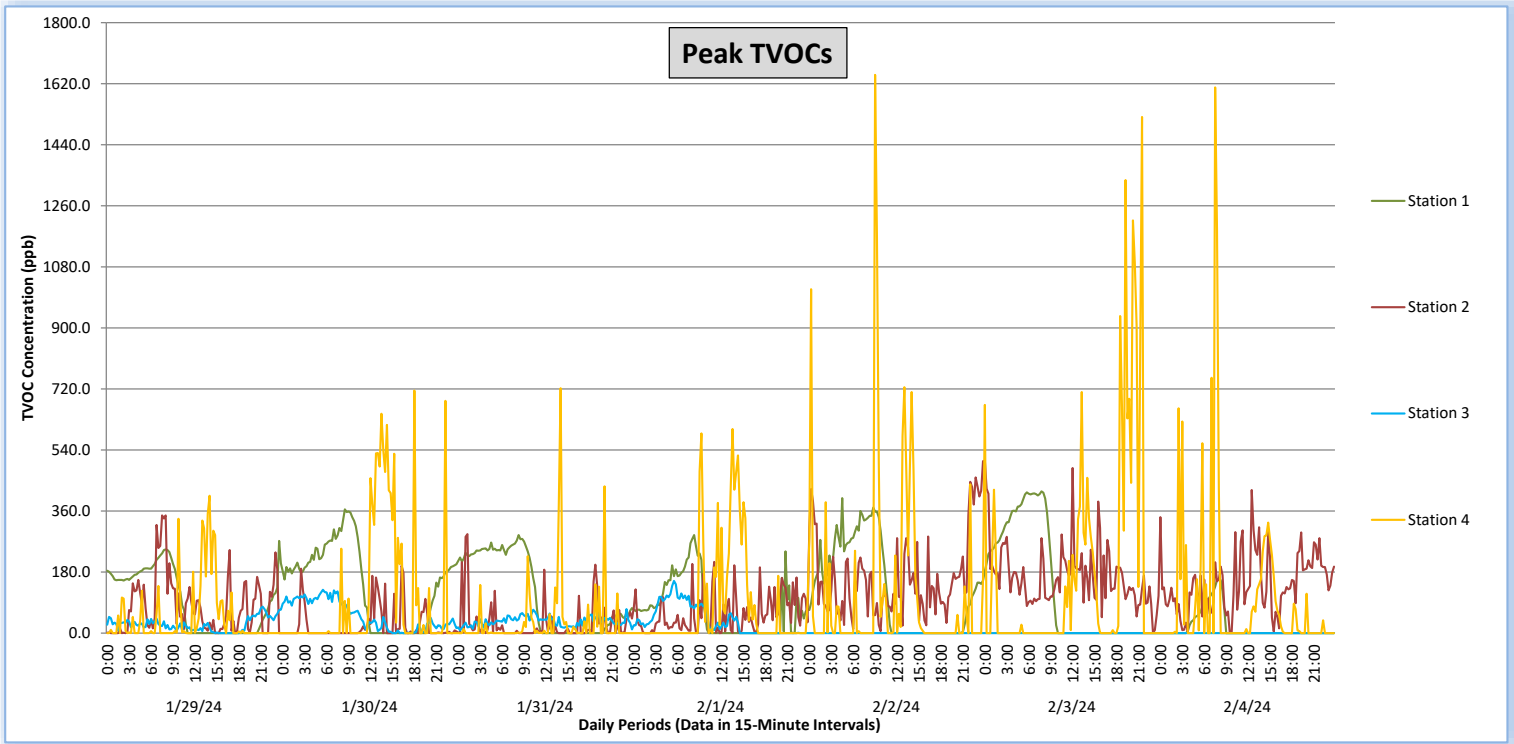
Perimeter Air Monitoring Weekly Report



Real-Time Multigas Monitoring
Bristol Landfill Air Investigation



January 29 - February 4, 2024





Perimeter Air Monitoring Weekly Report

Real-Time Multigas Monitoring
Bristol Landfill Air Investigation



January 29 - February 4, 2024

Date	Daily Statistics	Station 1				Station 2				Station 3				Station 4					
		TVOCs		H2S		TVOCs		H2S		TVOCs		H2S		TVOCs		H2S		NH3	
		Average ppb	Peak ppb	Average ppm	Peak ppm	Average ppb	Peak ppb	Average ppm	Peak ppm	Average ppb	Peak ppb	Average ppm	Peak ppm	Average ppb	Peak ppb	Average ppm	Peak ppm	Average ppm	Peak ppm
		Values from 15-minute intervals	1-minute max within each 15-minute interval	Values from 15-minute intervals	1-minute max within each 15-minute interval	Values from 15-minute intervals	1-minute max within each 15-minute interval	Values from 15-minute intervals	1-minute max within each 15-minute interval	Values from 15-minute intervals	1-minute max within each 15-minute interval	Values from 15-minute intervals	1-minute max within each 15-minute interval	Values from 15-minute intervals	1-minute max within each 15-minute interval	Values from 15-minute intervals	1-minute max within each 15-minute interval	Values from 15-minute intervals	1-minute max within each 15-minute interval
January 29, 2024	Minimum	0	0	0.0	0.0	0	0	0.0	0.0	0	0	0.0	0.0	0	0	0.0	0.0	0	0
	Maximum	243	272	0.0	0.0	266	347	0.0	0.0	56	78	0.0	0.0	218	405	0.0	0.0	1	1
	Average	90	95	0.0	0.0	40	79	0.0	0.0	14	26	0.0	0.0	11	46	0.0	0.0	0	0
January 30, 2024	Minimum	0	0	0.0	0.0	0	0	0.0	0.0	0	0	0.0	0.0	0	0	0.0	0.0	0	0
	Maximum	352	365	0.0	0.0	143	199	0.0	0.0	115	128	0.0	0.0	318	715	0.0	0.0	1	1
	Average	134	143	0.0	0.0	8	24	0.0	0.0	39	52	0.0	0.0	36	102	0.0	0.0	0	0
January 31, 2024	Minimum	0	0	0.0	0.0	0	0	0.0	0.0	4	8	0.0	0.0	0	0	0.0	0.0	0	0
	Maximum	275	289	0.0	0.0	124	292	0.0	0.0	57	71	0.0	0.0	82	722	0.0	0.0	1	1
	Average	111	117	0.0	0.0	8	30	0.0	0.0	20	35	0.0	0.0	4	33	0.0	0.0	0	0
February 1, 2024	Minimum	0	0	0.0	0.0	0	0	0.0	0.0	0	0	0.0	0.0	0	0	0.0	0.0	0	0
	Maximum	271	289	0.0	0.0	105	210	0.0	0.0	134	154	0.0	0.0	334	602	0.0	0.0	1	1
	Average	58	71	0.0	0.0	16	57	0.0	0.0	28	39	0.0	0.0	32	80	0.0	0.0	0	0
February 2, 2024	Minimum	0	0	0.0	0.0	1	6	0.0	0.0	0	0	0.0	0.0	0	0	0.0	0.0	0	0
	Maximum	359	398	0.0	0.0	417	507	0.0	0.0	0	0	0.0	0.0	276	1,646	0.0	0.0	0	0
	Average	118	130	0.0	0.0	100	163	0.0	0.0	0	0	0.0	0.0	24	117	0.0	0.0	0	0
February 3, 2024	Minimum	0	0	0.0	0.0	0	1	0.0	0.0	0	0	0.0	0.0	0	0	0.0	0.0	0	0
	Maximum	412	418	0.0	0.0	441	508	0.0	0.0	0	0	0.0	0.0	305	1,522	0.0	0.0	0	0
	Average	129	133	0.0	0.0	94	167	0.0	0.0	0	0	0.0	0.0	40	176	0.0	0.0	0	0
February 4, 2024	Minimum	0	0	0.0	0.0	0	1	0.0	0.0	0	0	0.0	0.0	0	0	0.0	0.0	0	0
	Maximum	157	161	0.0	0.0	196	422	0.0	0.0	0	0	0.0	0.0	237	1,609	0.0	0.0	0	0
	Average	17	19	0.0	0.0	76	145	0.0	0.0	0	0	0.0	0.0	24	103	0.0	0.0	0	0

Notes:

- Dash/Blank data records indicate no data is available for that interval
- Calibration readings and data produced during sensor errors are excluded from the report

Perimeter Air Monitoring Weekly Report



Real-Time Multigas Monitoring Bristol Landfill Air Investigation



January 29 - February 4, 2024

Date	Daily Statistics	Bristol Met Station 1					Bristol Met Station 2				
		Wind Dir degrees	Wind Speed mph	Temp °F	RH %	Baro mbar	Wind Dir degrees	Wind Speed mph	Temp °F	RH %	Baro mbar
January 29, 2024	Minimum		0.7	35.0	61.0	946.0		0.3	28.2	59.0	949.8
	Maximum		4.7	45.9	90.4	951.4		5.1	45.0	87.3	955.4
	Average	322	2.0	39.2	77.7	949.8	304	2.5	37.6	76.8	953.6
January 30, 2024	Minimum		0.1	30.1	51.0	943.7		0.1	23.6	51.4	947.7
	Maximum		2.4	51.5	95.0	948.9		3.1	50.5	89.0	954.4
	Average	306	1.0	43.1	75.1	945.8	37	1.1	36.8	77.6	951.2
January 31, 2024	Minimum		0.2	36.9	67.0	944.2		0.2	36.5	64.2	948.2
	Maximum		3.4	41.8	94.0	951.6		4.1	41.7	88.0	955.6
	Average	312	1.7	39.2	81.8	948.8	303	1.5	39.1	77.6	952.6
February 1, 2024	Minimum		0.1	31.3	47.4	947.0		0.1	28.1	49.2	951.0
	Maximum		2.6	53.2	94.8	952.1		4.1	51.8	87.7	956.1
	Average	264	1.2	42.9	68.5	949.6	3	1.0	39.3	73.4	953.5
February 2, 2024	Minimum		0.3	36.9	48.8	944.2		0.1	30.8	51.8	948.2
	Maximum		5.2	58.2	82.3	946.5		5.0	56.0	87.6	951.0
	Average	25	2.3	48.7	64.4	945.6	45	1.3	41.6	73.4	949.8
February 3, 2024	Minimum		0.9	38.4	30.0	944.3		0.2	30.2	23.8	947.7
	Maximum		4.3	58.8	69.6	948.1		4.6	58.2	85.0	952.0
	Average	50	2.0	51.6	46.8	946.2	101	2.1	42.9	58.3	949.9
February 4, 2024	Minimum		0.7	40.5	29.2	940.0		0.1	34.9	29.5	943.9
	Maximum		4.7	60.4	57.0	944.5		5.1	60.4	71.1	948.4
	Average	55	3.0	51.3	40.5	941.4	89	2.3	46.6	47.1	946.2

Notes:

- Dash/Blank data records indicate no data is available for that interval
- Wind direction is a daily (24-hr) average value; with the origin of wind in degrees; clockwise from North calculated with vector averaging