

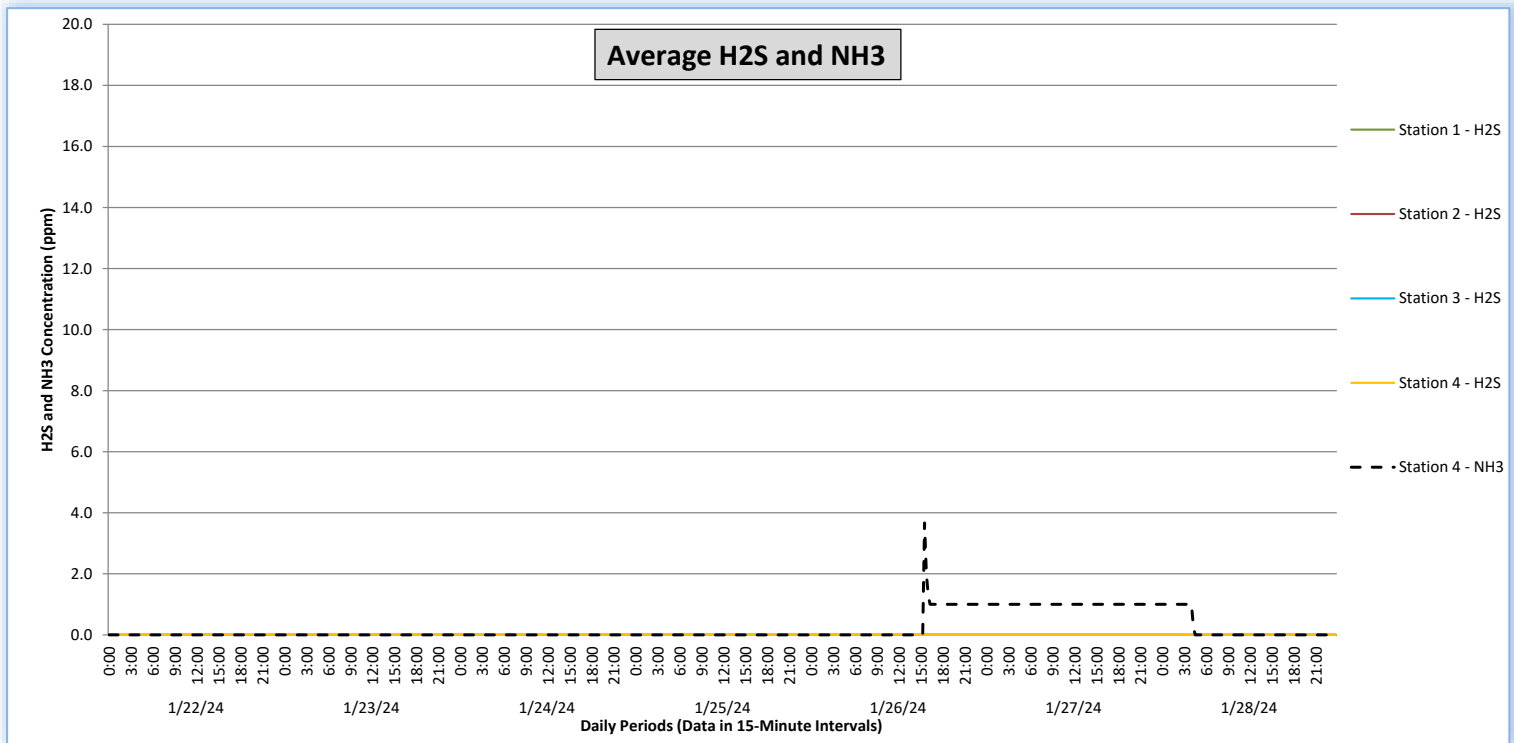
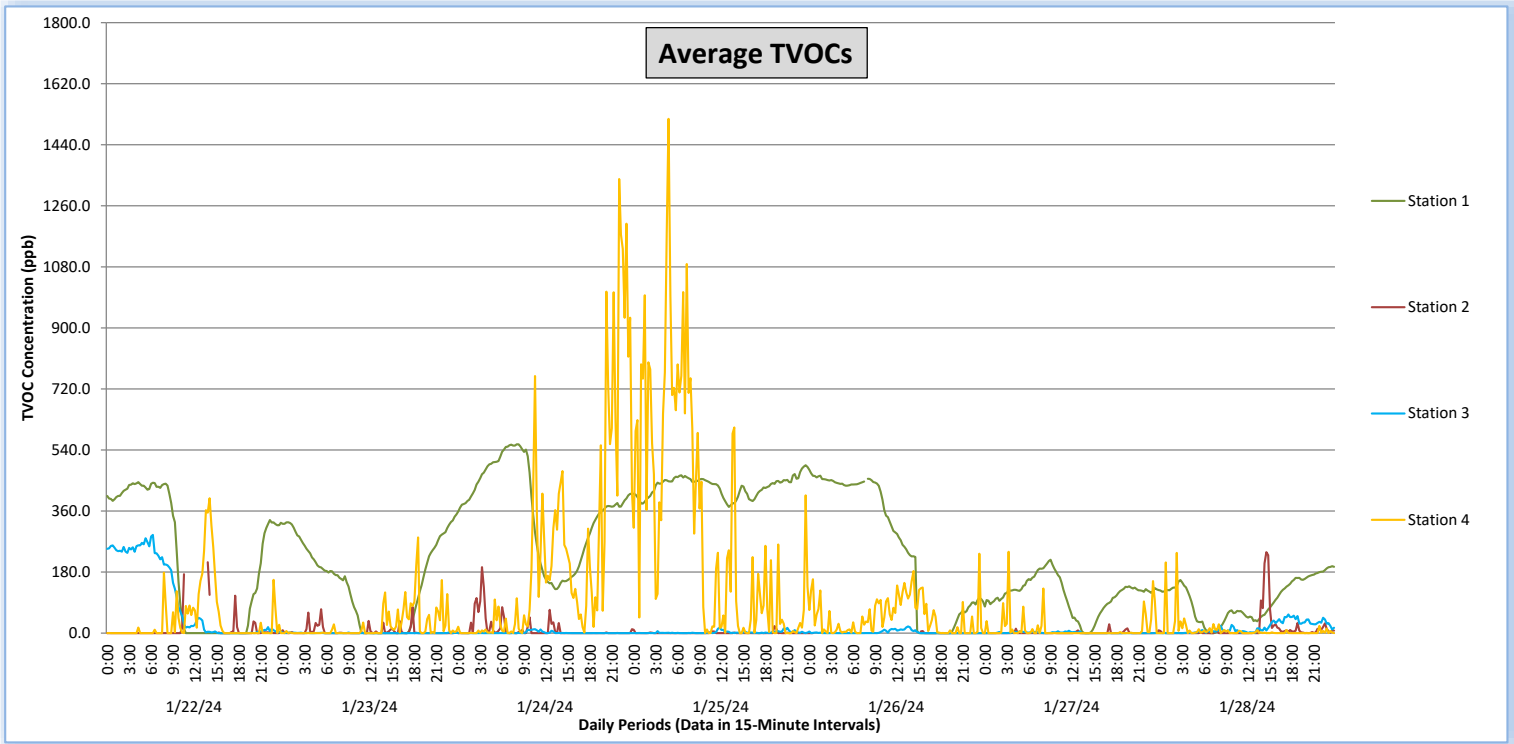
Perimeter Air Monitoring Weekly Report



Real-Time Multigas Monitoring
Bristol Landfill Air Investigation



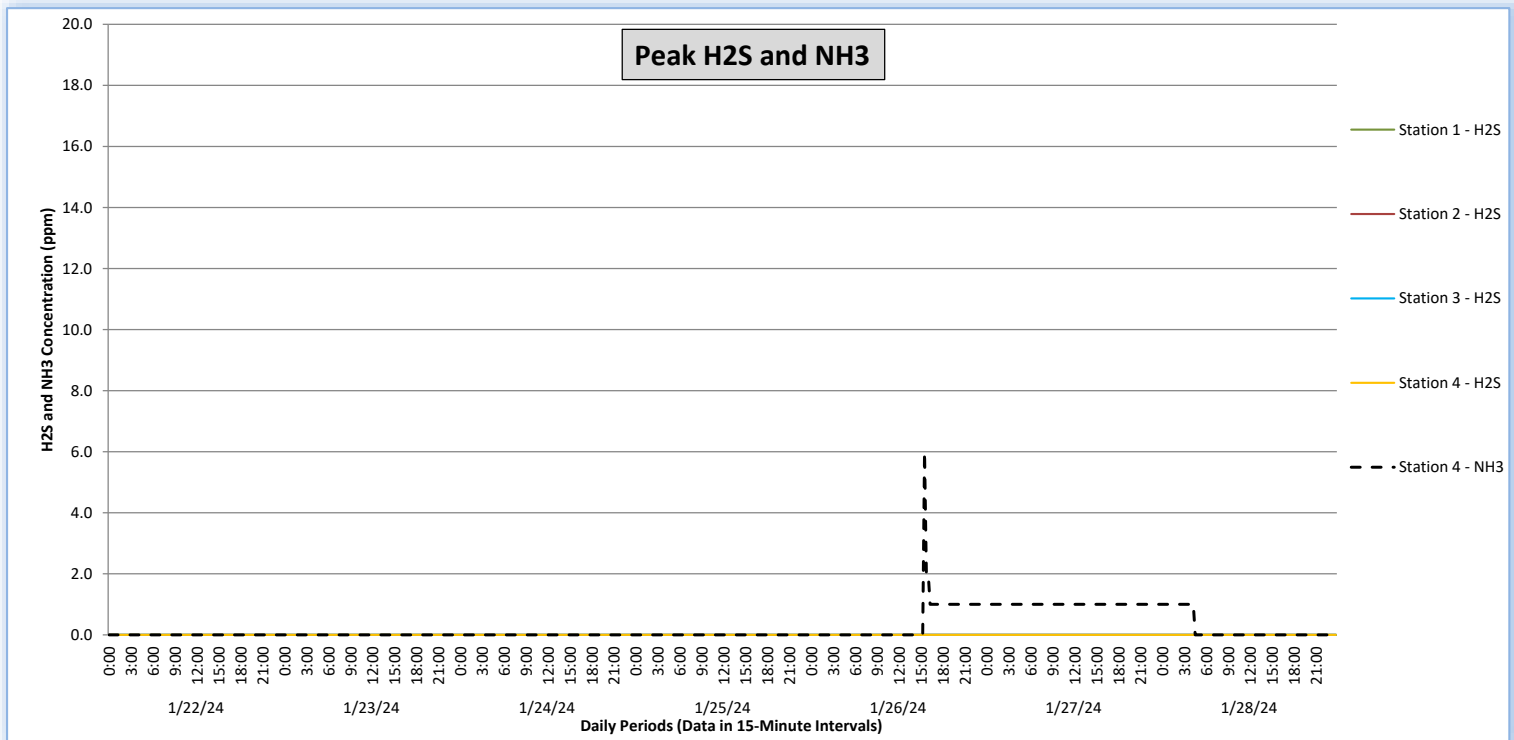
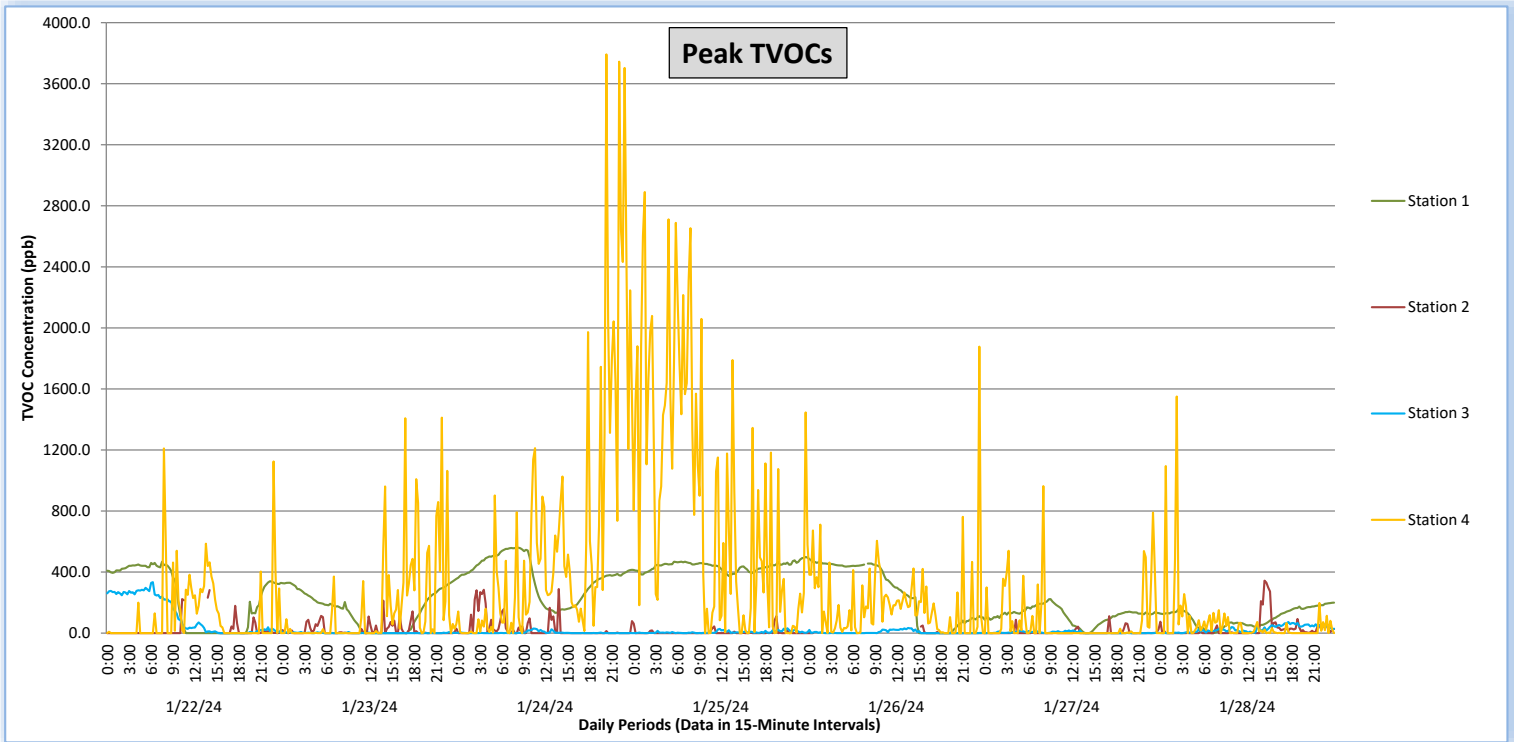
January 22 - January 28, 2024



Perimeter Air Monitoring Weekly Report

Real-Time Multigas Monitoring
Bristol Landfill Air Investigation

January 22 - January 28, 2024





Perimeter Air Monitoring Weekly Report

Real-Time Multigas Monitoring
Bristol Landfill Air Investigation



January 22 - January 28, 2024

Date	Daily Statistics	Station 1				Station 2				Station 3				Station 4					
		TVOCs		H2S		TVOCs		H2S		TVOCs		H2S		TVOCs		H2S		NH3	
		Average ppb	Peak ppb	Average ppm	Peak ppm	Average ppb	Peak ppb	Average ppm	Peak ppm	Average ppb	Peak ppb	Average ppm	Peak ppm	Average ppb	Peak ppb	Average ppm	Peak ppm	Average ppm	Peak ppm
		Values from 15-minute intervals	1-minute max within each 15-minute interval	Values from 15-minute intervals	1-minute max within each 15-minute interval	Values from 15-minute intervals	1-minute max within each 15-minute interval	Values from 15-minute intervals	1-minute max within each 15-minute interval	Values from 15-minute intervals	1-minute max within each 15-minute interval	Values from 15-minute intervals	1-minute max within each 15-minute interval	Values from 15-minute intervals	1-minute max within each 15-minute interval	Values from 15-minute intervals	1-minute max within each 15-minute interval	Values from 15-minute intervals	1-minute max within each 15-minute interval
January 22, 2024	Minimum	0	0	0.0	0.0	0	0	0.0	0.0	0	0	0.0	0.0	0	0	0.0	0.0	0	0
	Maximum	445	468	0.0	0.0	209	282	0.0	0.0	290	334	0.0	0.0	398	1,210	0.0	0.0	0	0
	Average	217	226	0.0	0.0	9	19	0.0	0.0	102	114	0.0	0.0	41	119	0.0	0.0	0	0
January 23, 2024	Minimum	0	0	0.0	0.0	0	0	0.0	0.0	0	0	0.0	0.0	0	0	0.0	0.0	0	0
	Maximum	350	356	0.0	0.0	77	213	0.0	0.0	2	8	0.0	0.0	282	1,412	0.0	0.0	0	0
	Average	153	157	0.0	0.0	5	20	0.0	0.0	0	1	0.0	0.0	23	165	0.0	0.0	0	0
January 24, 2024	Minimum	130	133	0.0	0.0	0	0	0.0	0.0	0	0	0.0	0.0	0	0	0.0	0.0	0	0
	Maximum	557	560	0.0	0.0	195	289	0.0	0.0	12	30	0.0	0.0	1,339	3,792	0.0	0.0	0	0
	Average	359	365	0.0	0.0	13	36	0.0	0.0	1	3	0.0	0.0	238	636	0.0	0.0	0	0
January 25, 2024	Minimum	372	374	0.0	0.0	0	0	0.0	0.0	0	0	0.0	0.0	0	0	0.0	0.0	0	0
	Maximum	495	499	0.0	0.0	21	111	0.0	0.0	16	32	0.0	0.0	1,516	2,890	0.0	0.0	0	0
	Average	433	438	0.0	0.0	1	4	0.0	0.0	2	7	0.0	0.0	305	841	0.0	0.0	0	0
January 26, 2024	Minimum	0	0	0.0	0.0	0	0	0.0	0.0	0	0	0.0	0.0	0	0	0.0	0.0	0	0
	Maximum	482	486	0.0	0.0	6	50	0.0	0.0	20	34	0.0	0.0	234	1,877	0.0	0.0	4	6
	Average	254	258	0.0	0.0	0	3	0.0	0.0	2	6	0.0	0.0	47	184	0.0	0.0	0	0
January 27, 2024	Minimum	0	0	0.0	0.0	0	0	0.0	0.0	0	0	0.0	0.0	0	0	0.0	0.0	1	1
	Maximum	216	223	0.0	0.0	26	111	0.0	0.0	7	18	0.0	0.0	240	963	0.0	0.0	1	1
	Average	113	118	0.0	0.0	1	5	0.0	0.0	1	4	0.0	0.0	12	73	0.0	0.0	1	1
January 28, 2024	Minimum	0	0	0.0	0.0	0	0	0.0	0.0	0	0	0.0	0.0	0	0	0.0	0.0	0	0
	Maximum	197	200	0.0	0.0	239	344	0.0	0.0	55	73	0.0	0.0	237	1,550	0.0	0.0	1	1
	Average	100	103	0.0	0.0	13	30	0.0	0.0	16	27	0.0	0.0	9	65	0.0	0.0	0	0

Notes:

- Dash/Blank data records indicate no data is available for that interval
- Calibration readings and data produced during sensor errors are excluded from the report

Perimeter Air Monitoring Weekly Report



Real-Time Multigas Monitoring Bristol Landfill Air Investigation



January 22 - January 28, 2024

Date	Daily Statistics	Bristol Met Station 1					Bristol Met Station 2				
		Wind Dir degrees	Wind Speed mph	Temp °F	RH %	Baro mbar	Wind Dir degrees	Wind Speed mph	Temp °F	RH %	Baro mbar
January 22, 2024	Minimum		0.3	31.0	26.3	960.2		0.4	10.5	26.0	964.2
	Maximum		2.3	51.1	56.0	963.8		3.5	47.2	85.0	967.9
	Average	338	1.3	44.1	34.5	961.9	83	1.3	27.7	62.6	965.9
January 23, 2024	Minimum		0.3	40.1	46.7	957.9		0.1	28.7	46.8	962.0
	Maximum		3.4	53.6	88.4	960.4		3.4	51.9	83.0	965.5
	Average	30	1.6	46.4	62.4	959.1	102	1.3	40.5	60.8	963.6
January 24, 2024	Minimum		0.0	41.4	58.5	952.1		0.1	39.4	57.2	956.1
	Maximum		3.1	69.4	90.3	958.8		4.4	69.3	86.7	962.8
	Average	59	1.3	57.0	76.9	955.0	114	0.8	54.7	76.6	959.1
January 25, 2024	Minimum		0.1	54.9	83.2	947.0		0.0	53.3	81.8	951.0
	Maximum		3.3	62.3	96.4	952.9		2.9	62.4	90.0	956.9
	Average	51	1.0	58.1	94.1	950.3	70	0.9	57.0	88.4	954.3
January 26, 2024	Minimum		0.1	48.3	64.0	947.5		0.1	45.9	62.7	951.5
	Maximum		3.0	65.5	95.8	952.4		4.6	64.4	90.0	956.3
	Average	312	0.8	58.0	86.5	950.4	315	1.2	57.3	81.7	954.4
January 27, 2024	Minimum		0.2	43.0	81.0	938.1		0.1	41.5	77.3	942.1
	Maximum		5.6	56.6	96.0	952.1		5.2	56.5	90.3	956.1
	Average	42	2.3	50.3	91.8	947.6	76	1.6	50.1	85.5	951.5
January 28, 2024	Minimum		0.1	35.8	85.0	936.9		0.2	36.1	79.0	940.8
	Maximum		5.4	52.9	95.0	945.7		6.0	53.0	90.0	949.7
	Average	302	2.8	39.8	91.8	941.3	300	3.3	41.1	84.8	944.9

Notes:

- Dash/Blank data records indicate no data is available for that interval
- Wind direction is a daily (24-hr) average value; with the origin of wind in degrees; clockwise from North calculated with vector averaging