

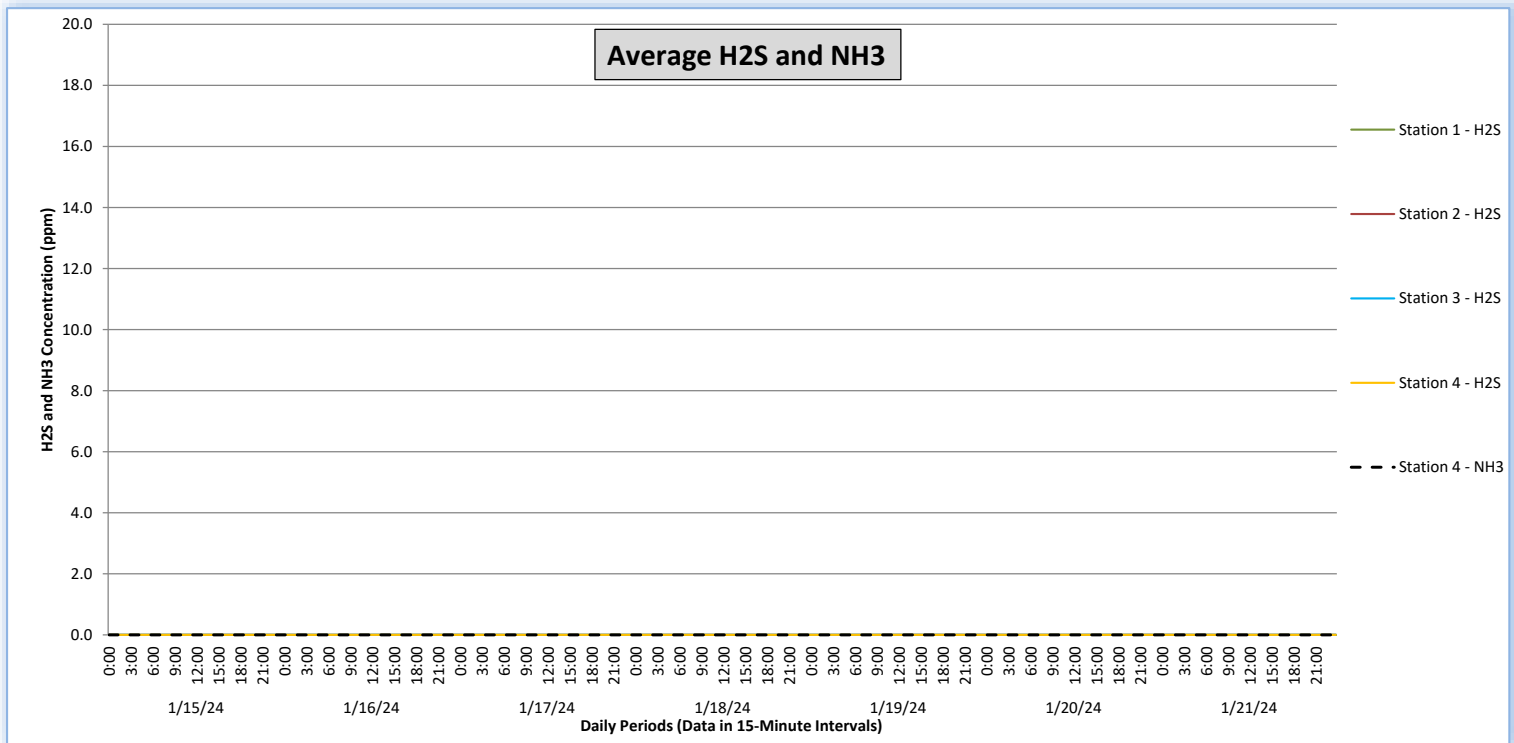
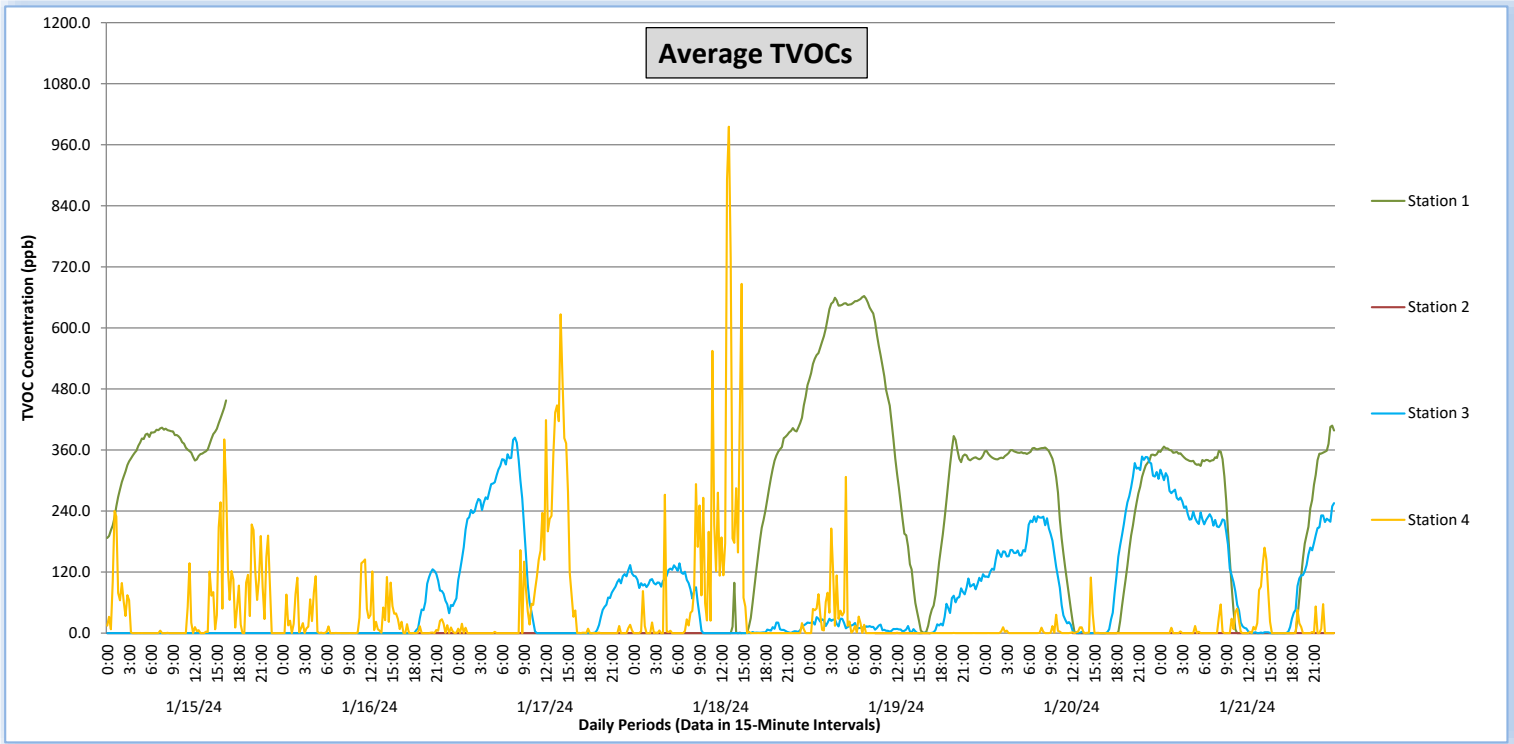
Perimeter Air Monitoring Weekly Report



Real-Time Multigas Monitoring
Bristol Landfill Air Investigation



January 15 - January 21, 2024



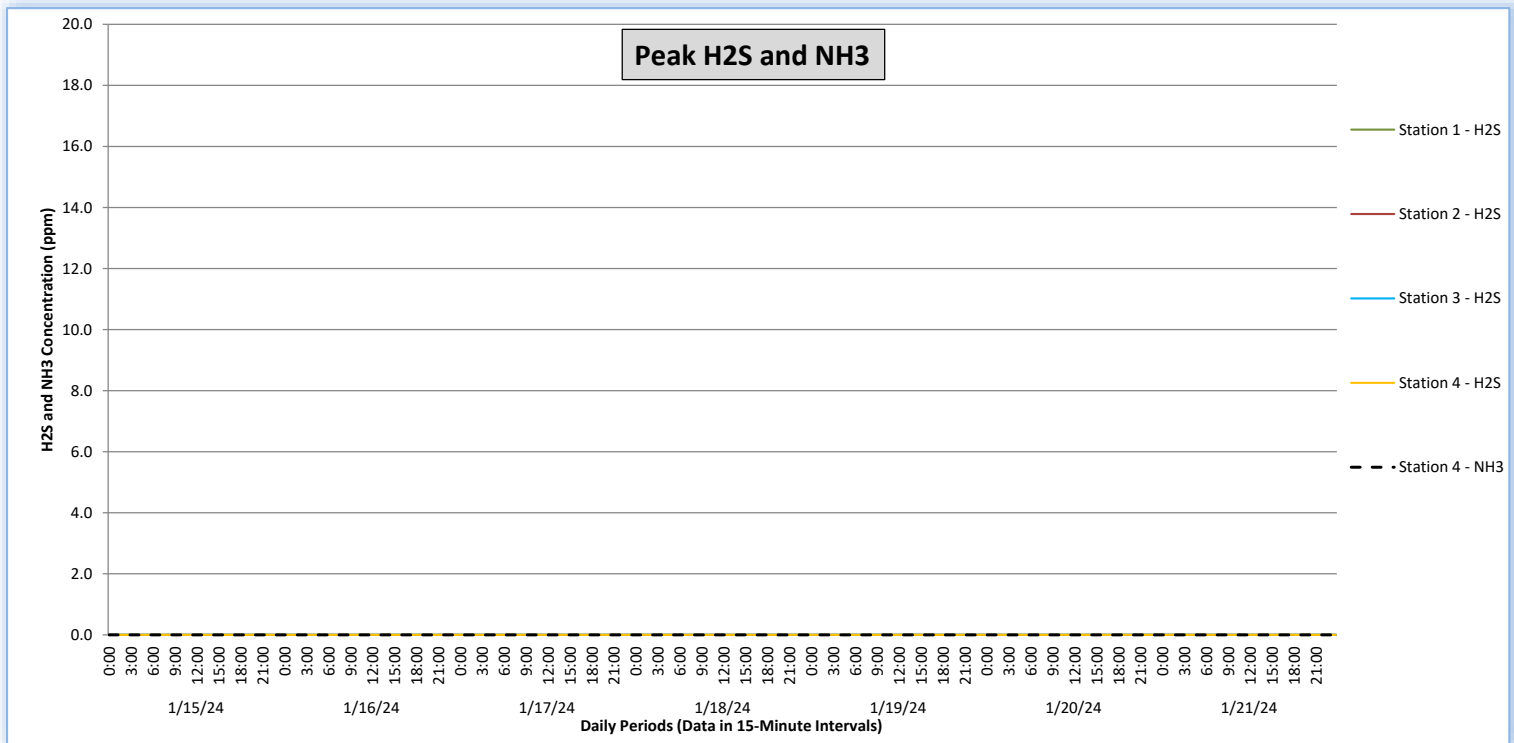
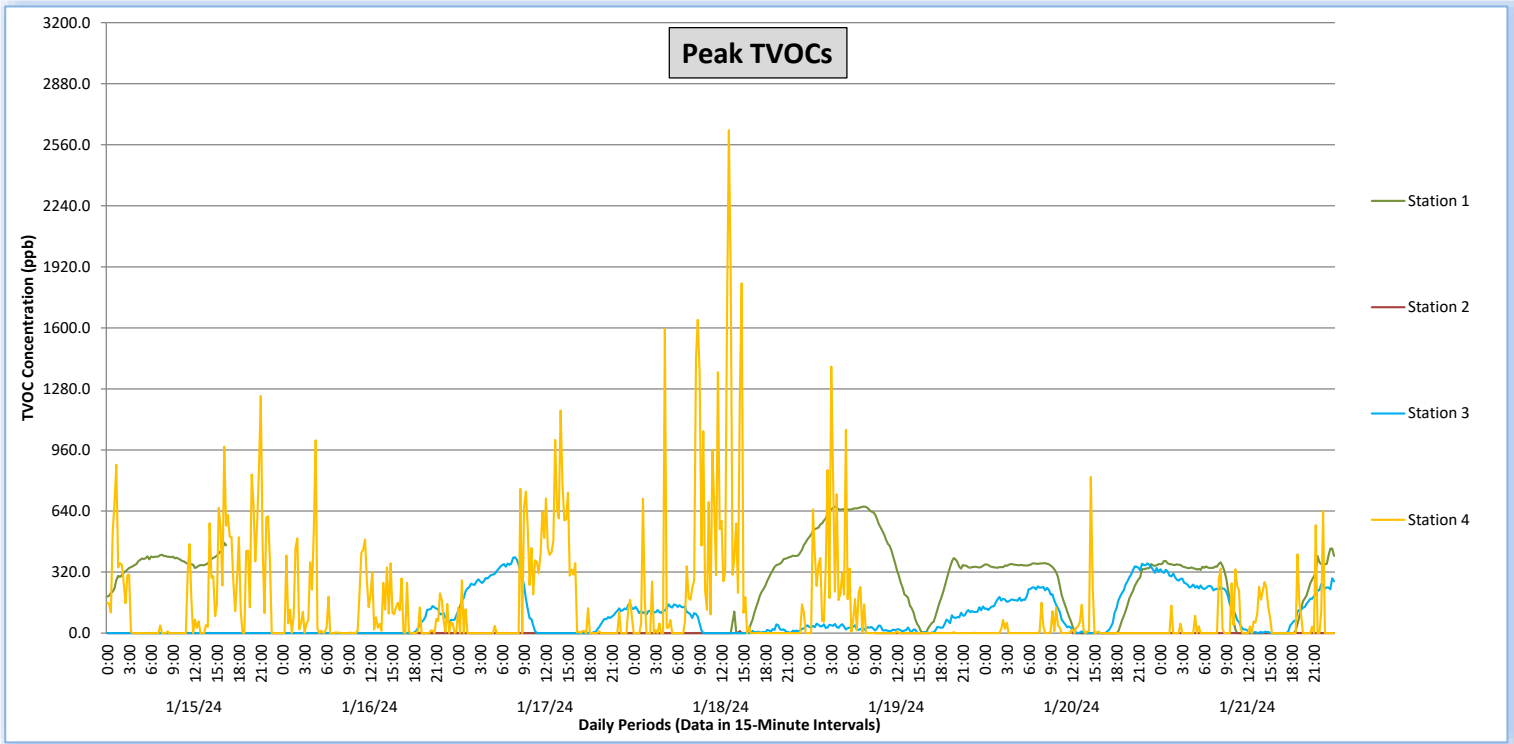
Perimeter Air Monitoring Weekly Report



Real-Time Multigas Monitoring
Bristol Landfill Air Investigation



January 15 - January 21, 2024





Perimeter Air Monitoring Weekly Report

Real-Time Multigas Monitoring
Bristol Landfill Air Investigation



January 15 - January 21, 2024

Date	Daily Statistics	Station 1				Station 2				Station 3				Station 4					
		TVOCs		H2S		TVOCs		H2S		TVOCs		H2S		TVOCs		H2S		NH3	
		Average ppb	Peak ppb	Average ppm	Peak ppm	Average ppb	Peak ppb	Average ppm	Peak ppm	Average ppb	Peak ppb	Average ppm	Peak ppm	Average ppb	Peak ppb	Average ppm	Peak ppm	Average ppm	Peak ppm
		Values from 15-minute intervals	1-minute max within each 15-minute interval	Values from 15-minute intervals	1-minute max within each 15-minute interval	Values from 15-minute intervals	1-minute max within each 15-minute interval	Values from 15-minute intervals	1-minute max within each 15-minute interval	Values from 15-minute intervals	1-minute max within each 15-minute interval	Values from 15-minute intervals	1-minute max within each 15-minute interval	Values from 15-minute intervals	1-minute max within each 15-minute interval	Values from 15-minute intervals	1-minute max within each 15-minute interval	Values from 15-minute intervals	1-minute max within each 15-minute interval
January 15, 2024	Minimum	187	192	0.0	0.0	0	0	0.0	0.0	0	0	0.0	0.0	0	0	0.0	0.0	0	0
	Maximum	458	473	0.0	0.0	0	0	0.0	0.0	0	0	0.0	0.0	381	1,243	0.0	0.0	0	0
	Average	359	365	0.0	0.0	0	0	0.0	0.0	0	0	0.0	0.0	54	218	0.0	0.0	0	0
January 16, 2024	Minimum	0	0	0.0	0.0	0	0	0.0	0.0	0	0	0.0	0.0	0	0	0.0	0.0	0	0
	Maximum	0	0	0.0	0.0	0	0	0.0	0.0	125	142	0.0	0.0	145	1,011	0.0	0.0	0	0
	Average	0	0	0.0	0.0	0	0	0.0	0.0	17	21	0.0	0.0	21	109	0.0	0.0	0	0
January 17, 2024	Minimum	0	0	0.0	0.0	0	0	0.0	0.0	0	0	0.0	0.0	0	0	0.0	0.0	0	0
	Maximum	0	0	0.0	0.0	0	0	0.0	0.0	384	398	0.0	0.0	627	1,167	0.0	0.0	0	0
	Average	0	0	0.0	0.0	0	0	0.0	0.0	127	138	0.0	0.0	70	181	0.0	0.0	0	0
January 18, 2024	Minimum	0	0	0.0	0.0	0	0	0.0	0.0	0	0	0.0	0.0	0	0	0.0	0.0	0	0
	Maximum	487	492	0.0	0.0	1	11	0.0	0.0	137	151	0.0	0.0	995	2,636	0.0	0.0	0	0
	Average	106	110	0.0	0.0	0	0	0.0	0.0	42	50	0.0	0.0	88	289	0.0	0.0	0	0
January 19, 2024	Minimum	0	1	0.0	0.0	0	0	0.0	0.0	0	0	0.0	0.0	0	0	0.0	0.0	0	0
	Maximum	663	665	0.0	0.0	160	199	0.0	0.0	116	140	0.0	0.0	307	1,397	0.0	0.0	0	0
	Average	402	409	0.0	0.0	5	6	0.0	0.0	28	40	0.0	0.0	15	105	0.0	0.0	0	0
January 20, 2024	Minimum	0	0	0.0	0.0	0	0	0.0	0.0	0	0	0.0	0.0	0	0	0.0	0.0	0	0
	Maximum	365	367	0.0	0.0	0	0	0.0	0.0	347	366	0.0	0.0	109	819	0.0	0.0	0	0
	Average	216	221	0.0	0.0	0	0	0.0	0.0	148	161	0.0	0.0	3	22	0.0	0.0	0	0
January 21, 2024	Minimum	0	0	0.0	0.0	0	0	0.0	0.0	0	0	0.0	0.0	0	0	0.0	0.0	0	0
	Maximum	408	443	0.0	0.0	0	0	0.0	0.0	321	335	0.0	0.0	168	639	0.0	0.0	0	0
	Average	197	205	0.0	0.0	0	0	0.0	0.0	144	157	0.0	0.0	13	60	0.0	0.0	0	0

Notes:

- Dash/Blank data records indicate no data is available for that interval
- Calibration readings and data produced during sensor errors are excluded from the report

Perimeter Air Monitoring Weekly Report



Real-Time Multigas Monitoring Bristol Landfill Air Investigation



January 15 - January 21, 2024

Date	Daily Statistics	Bristol Met Station 1					Bristol Met Station 2				
		Wind Dir degrees	Wind Speed mph	Temp °F	RH %	Baro mbar	Wind Dir degrees	Wind Speed mph	Temp °F	RH %	Baro mbar
January 15, 2024	Minimum		0.1	28.4	66.2	944.1		0.1	28.2	62.4	948.0
	Maximum		2.6	33.4	95.0	950.1		2.3	33.0	89.0	954.1
	Average	302	1.0	31.1	90.2	948.0	54	1.0	30.9	85.2	952.0
January 16, 2024	Minimum		0.8	21.5	89.2	940.6		0.1	10.2	73.1	944.6
	Maximum		3.0	32.7	95.0	944.3		4.7	32.5	89.0	954.2
	Average	353	1.9	31.1	94.3	942.3	312	1.9	21.9	83.0	949.3
January 17, 2024	Minimum		--	--	--	--		0.3	2.6	58.2	954.0
	Maximum		--	--	--	--		4.9	23.5	85.0	958.4
	Average	--	--	--	--	--	332	1.5	12.5	76.9	956.8
January 18, 2024	Minimum		--	--	--	--		0.2	7.3	43.1	945.2
	Maximum		--	--	--	--		3.6	34.1	84.5	957.4
	Average	--	--	--	--	--	64	1.5	22.5	71.3	952.8
January 19, 2024	Minimum		3.2	29.4	68.2	945.8		0.2	18.5	61.7	944.2
	Maximum		3.2	29.4	68.2	945.8		8.0	30.9	88.0	955.2
	Average	285	3.2	29.4	68.2	945.8	303	3.5	27.5	78.0	948.9
January 20, 2024	Minimum		--	--	--	--		0.6	5.3	52.7	955.3
	Maximum		--	--	--	--		5.1	18.7	81.0	966.8
	Average	--	--	--	--	--	312	2.8	13.1	73.4	960.1
January 21, 2024	Minimum		1.4	20.6	50.0	943.3		0.2	6.5	49.5	966.3
	Maximum		4.2	29.3	59.1	965.7		4.9	28.1	84.0	970.1
	Average	38	2.9	25.8	54.4	962.5	54	1.3	16.5	68.8	967.5

Notes:

- Dash/Blank data records indicate no data is available for that interval
- Wind direction is a daily (24-hr) average value; with the origin of wind in degrees; clockwise from North calculated with vector averaging