

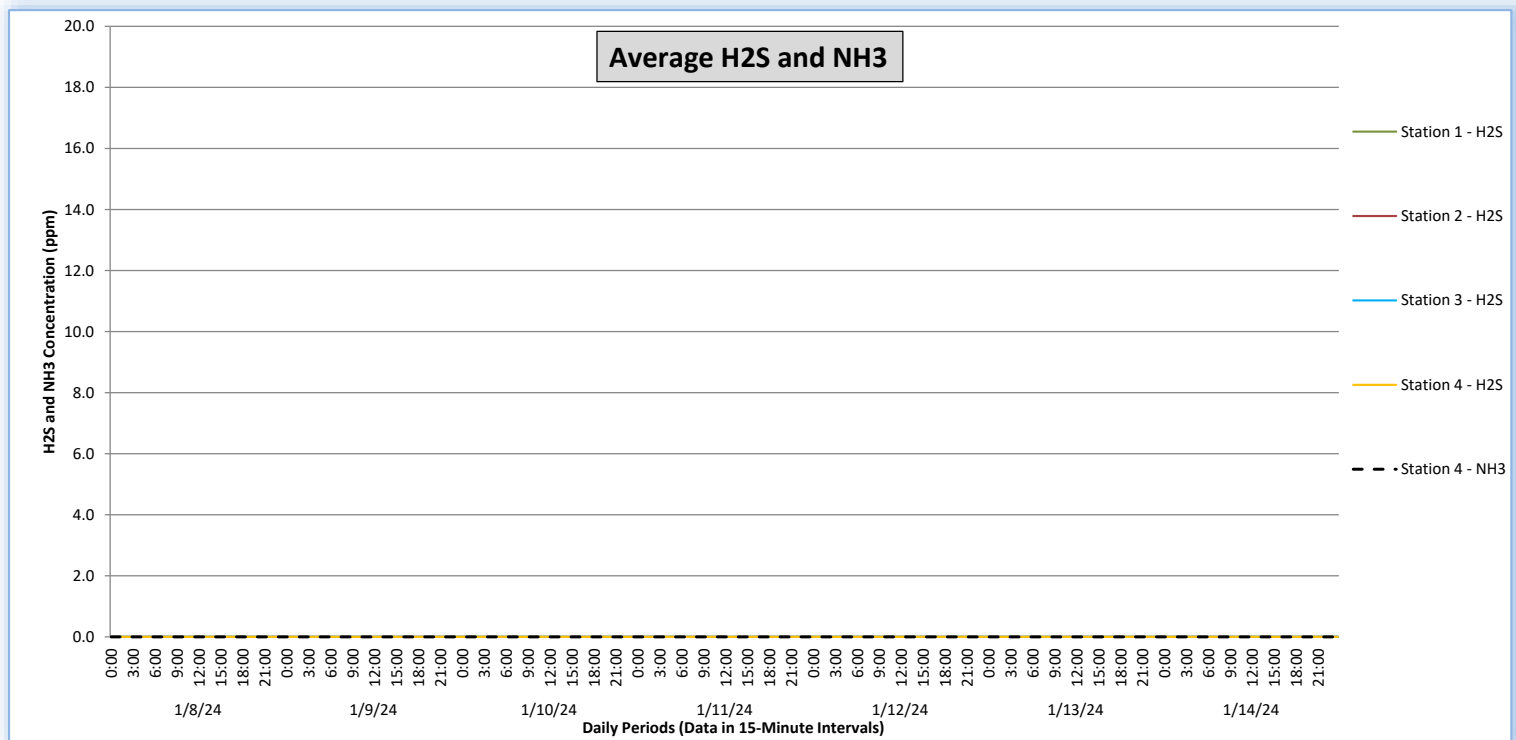
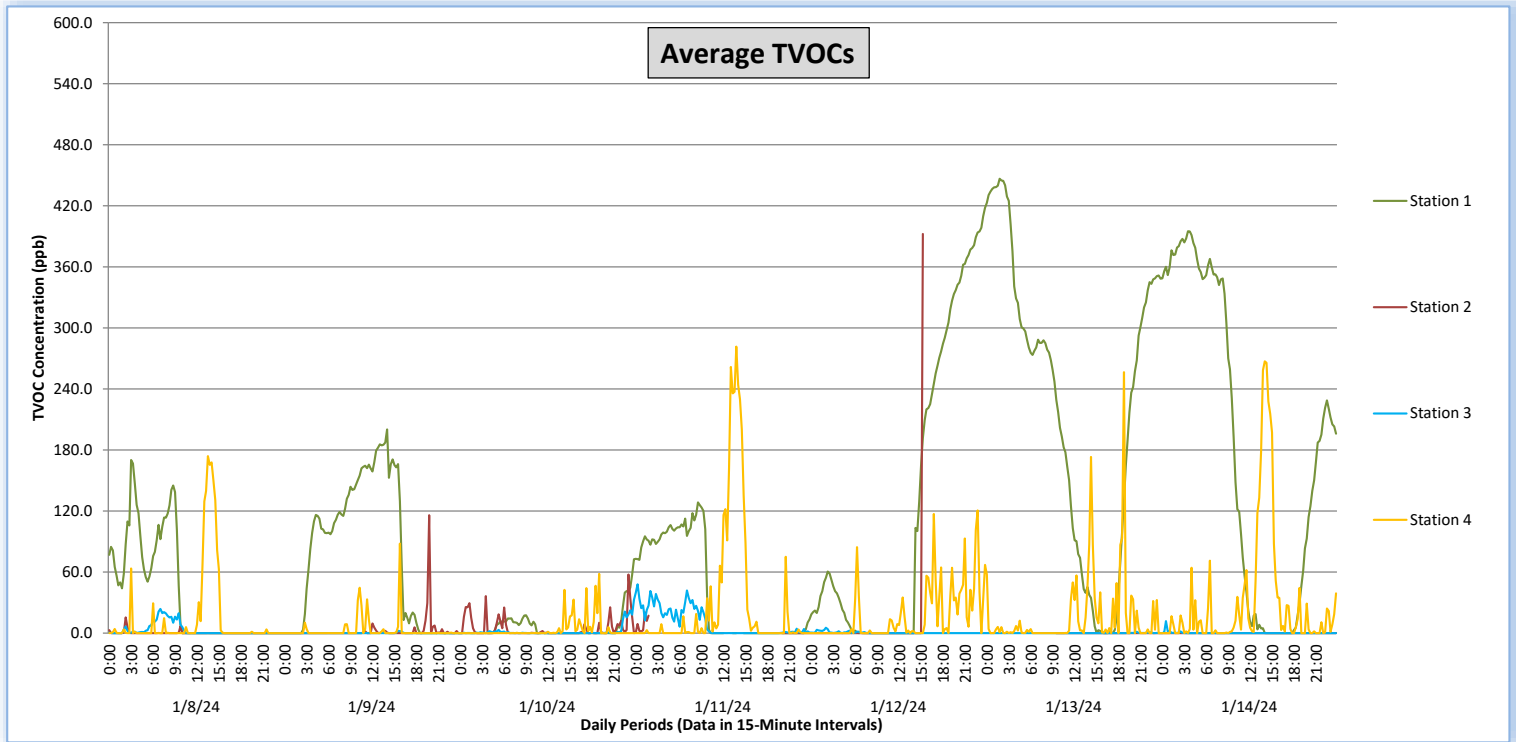


Perimeter Air Monitoring Weekly Report

Real-Time Multigas Monitoring
Bristol Landfill Air Investigation



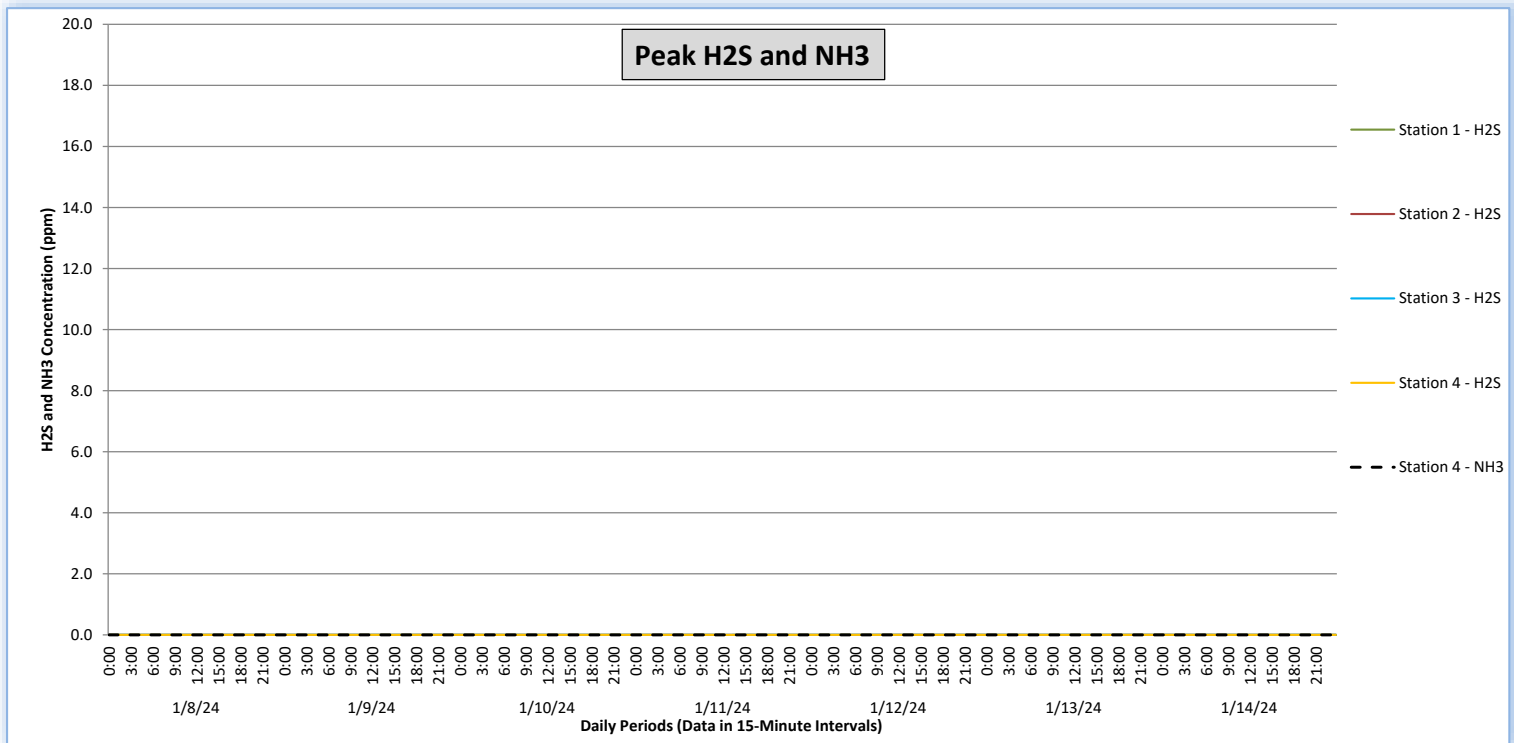
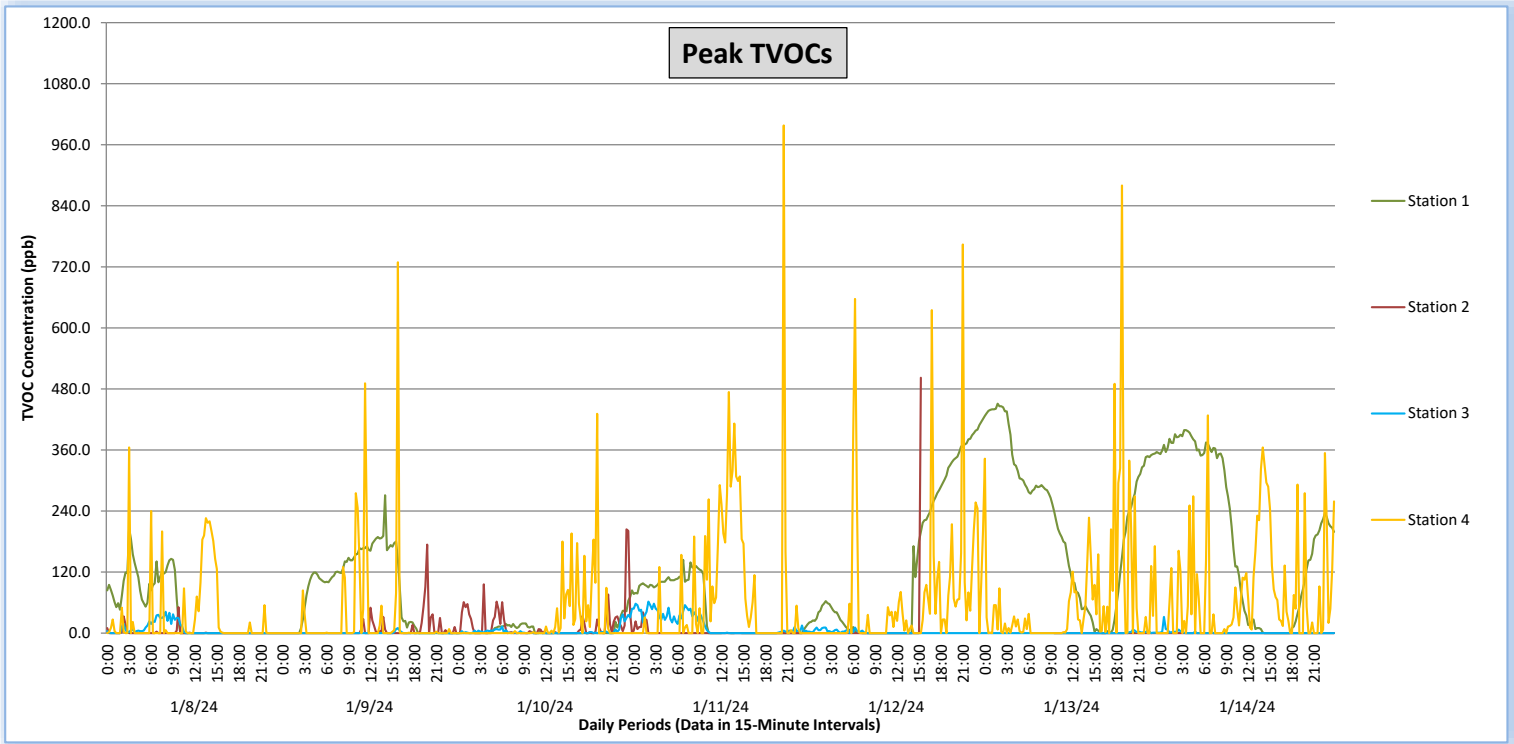
January 8 - January 14, 2024



Perimeter Air Monitoring Weekly Report

Real-Time Multigas Monitoring
Bristol Landfill Air Investigation

January 8 - January 14, 2024





Perimeter Air Monitoring Weekly Report

Real-Time Multigas Monitoring Bristol Landfill Air Investigation



January 8 - January 14, 2024

Date	Daily Statistics	Station 1				Station 2				Station 3				Station 4					
		TVOCs		H2S		TVOCs		H2S		TVOCs		H2S		TVOCs		H2S		NH3	
		Average ppb	Peak ppb	Average ppm	Peak ppm	Average ppb	Peak ppb	Average ppm	Peak ppm	Average ppb	Peak ppb	Average ppm	Peak ppm	Average ppb	Peak ppb	Average ppm	Peak ppm	Average ppm	Peak ppm
		Values from 15-minute intervals	1-minute max within each 15-minute interval	Values from 15-minute intervals	1-minute max within each 15-minute interval	Values from 15-minute intervals	1-minute max within each 15-minute interval	Values from 15-minute intervals	1-minute max within each 15-minute interval	Values from 15-minute intervals	1-minute max within each 15-minute interval	Values from 15-minute intervals	1-minute max within each 15-minute interval	Values from 15-minute intervals	1-minute max within each 15-minute interval	Values from 15-minute intervals	1-minute max within each 15-minute interval	Values from 15-minute intervals	1-minute max within each 15-minute interval
January 8, 2024	Minimum	0	0	0.0	0.0	0	0	0.0	0.0	0	0	0.0	0.0	0	0	0.0	0.0	0	0
	Maximum	170	206	0.0	0.0	15	51	0.0	0.0	24	42	0.0	0.0	174	365	0.0	0.0	0	0
	Average	38	42	0.0	0.0	0	1	0.0	0.0	3	7	0.0	0.0	15	32	0.0	0.0	0	0
January 9, 2024	Minimum	0	0	0.0	0.0	0	0	0.0	0.0	0	0	0.0	0.0	0	0	0.0	0.0	0	0
	Maximum	200	271	0.0	0.0	116	174	0.0	0.0	2	10	0.0	0.0	88	729	0.0	0.0	0	0
	Average	76	80	0.0	0.0	2	7	0.0	0.0	0	0	0.0	0.0	3	28	0.0	0.0	0	0
January 10, 2024	Minimum	0	0	0.0	0.0	0	0	0.0	0.0	0	0	0.0	0.0	0	0	0.0	0.0	0	0
	Maximum	73	84	0.0	0.0	58	204	0.0	0.0	33	48	0.0	0.0	58	431	0.0	0.0	0	0
	Average	6	8	0.0	0.0	5	16	0.0	0.0	2	4	0.0	0.0	4	23	0.0	0.0	0	0
January 11, 2024	Minimum	0	0	0.0	0.0	0	0	0.0	0.0	0	0	0.0	0.0	0	0	0.0	0.0	0	0
	Maximum	128	144	0.0	0.0	20	41	0.0	0.0	48	62	0.0	0.0	282	998	0.0	0.0	0	0
	Average	45	47	0.0	0.0	3	2	0.0	0.0	11	17	0.0	0.0	30	74	0.0	0.0	0	0
January 12, 2024	Minimum	0	0	0.0	0.0	0	0	0.0	0.0	0	0	0.0	0.0	0	0	0.0	0.0	0	0
	Maximum	418	421	0.0	0.0	392	502	0.0	0.0	5	11	0.0	0.0	121	764	0.0	0.0	0	0
	Average	129	133	0.0	0.0	6	8	0.0	0.0	0	2	0.0	0.0	17	65	0.0	0.0	0	0
January 13, 2024	Minimum	0	0	0.0	0.0	0	0	0.0	0.0	0	0	0.0	0.0	0	0	0.0	0.0	0	0
	Maximum	447	451	0.0	0.0	0	0	0.0	0.0	1	7	0.0	0.0	256	880	0.0	0.0	0	0
	Average	226	232	0.0	0.0	0	0	0.0	0.0	0	0	0.0	0.0	16	62	0.0	0.0	0	0
January 14, 2024	Minimum	0	0	0.0	0.0	0	0	0.0	0.0	0	0	0.0	0.0	0	0	0.0	0.0	0	0
	Maximum	395	399	0.0	0.0	0	0	0.0	0.0	12	32	0.0	0.0	267	428	0.0	0.0	0	0
	Average	189	194	0.0	0.0	0	0	0.0	0.0	0	1	0.0	0.0	31	80	0.0	0.0	0	0

Notes:

- Dash/Blank data records indicate no data is available for that interval
- Calibration readings and data produced during sensor errors are excluded from the report

Perimeter Air Monitoring Weekly Report



Real-Time Multigas Monitoring Bristol Landfill Air Investigation



January 8 - January 14, 2024

Date	Daily Statistics	Bristol Met Station 1					Bristol Met Station 2				
		Wind Dir degrees	Wind Speed mph	Temp °F	RH %	Baro mbar	Wind Dir degrees	Wind Speed mph	Temp °F	RH %	Baro mbar
January 8, 2024	Minimum		1.7	29.1	28.4	948.6		0.4	25.8	27.6	952.5
	Maximum		8.8	54.4	91.1	957.7		10.5	53.7	87.3	961.7
	Average	101	3.7	43.8	51.7	952.8	109	3.9	39.7	60.5	957.6
January 9, 2024	Minimum		0.1	37.1	56.6	919.1		0.4	36.8	54.1	922.9
	Maximum		6.9	56.3	95.0	948.1		9.1	57.1	87.6	952.0
	Average	210	2.8	45.9	84.3	931.0	168	4.1	46.6	77.3	934.9
January 10, 2024	Minimum		1.2	31.9	74.5	925.7		0.2	26.7	70.6	929.6
	Maximum		5.5	35.3	88.9	940.8		9.2	36.4	86.7	945.5
	Average	303	2.9	34.0	80.2	934.1	300	3.4	33.2	76.2	940.8
January 11, 2024	Minimum		0.4	27.8	42.4	944.1		0.1	22.9	42.8	945.7
	Maximum		2.4	51.8	95.0	947.8		4.3	51.1	88.0	951.8
	Average	248	1.4	44.1	58.4	946.2	23	1.2	35.0	72.3	949.2
January 12, 2024	Minimum		0.5	41.3	29.4	928.3		0.2	30.3	28.6	932.1
	Maximum		10.7	54.4	95.0	943.4		12.4	54.1	89.0	950.9
	Average	170	3.3	47.3	68.5	934.2	126	3.0	43.2	66.5	941.2
January 13, 2024	Minimum		0.4	28.4	58.0	927.7		0.0	26.4	57.6	931.6
	Maximum		7.2	42.2	95.8	943.4		8.5	44.1	89.9	949.9
	Average	299	3.7	34.6	73.9	936.2	299	4.1	33.4	70.0	942.0
January 14, 2024	Minimum		0.2	30.1	50.3	946.2		0.1	24.0	49.1	949.4
	Maximum		5.4	42.5	71.9	949.8		6.9	42.3	82.1	953.8
	Average	304	3.2	36.0	60.3	948.2	305	2.6	32.5	64.9	951.4

Notes:

- Dash/Blank data records indicate no data is available for that interval
- Wind direction is a daily (24-hr) average value; with the origin of wind in degrees; clockwise from North calculated with vector averaging