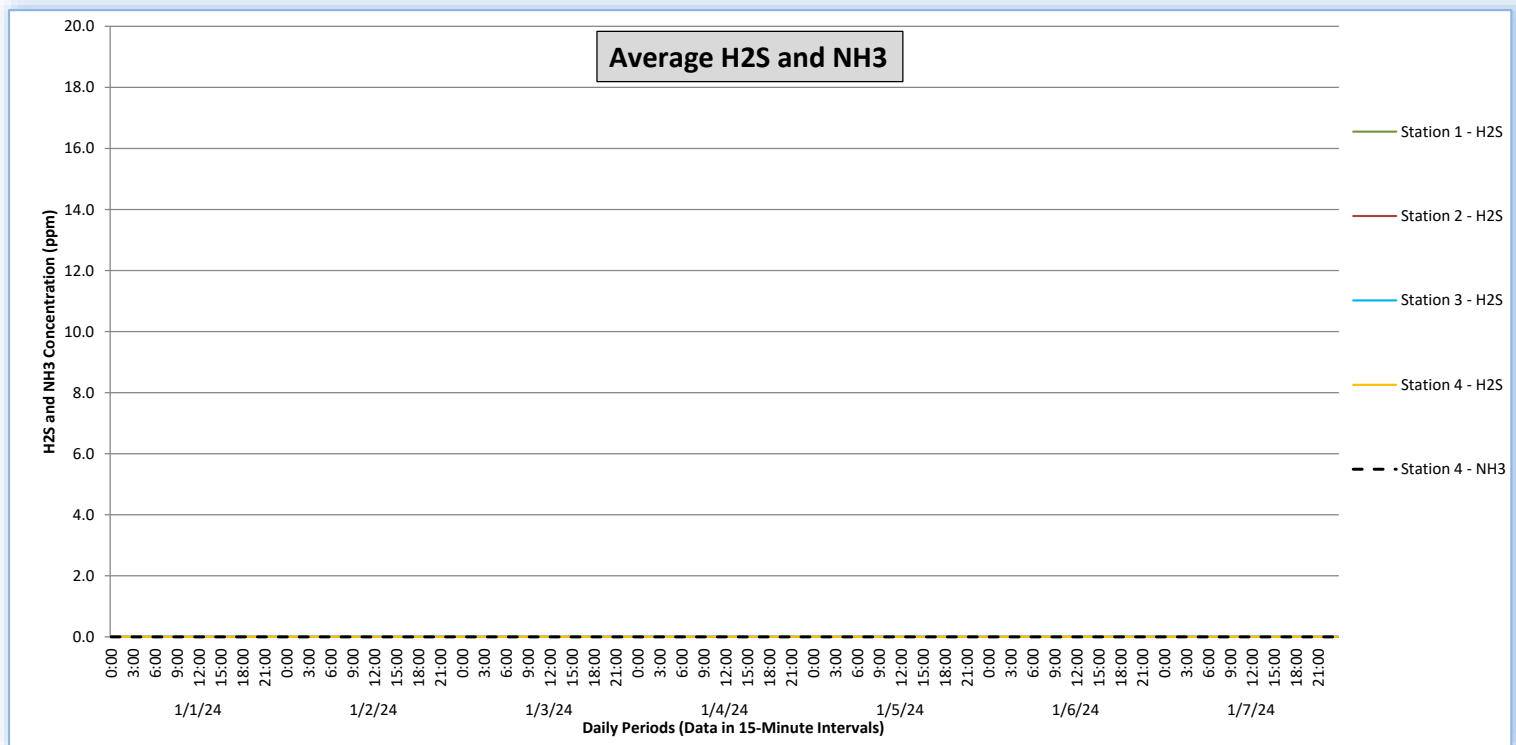
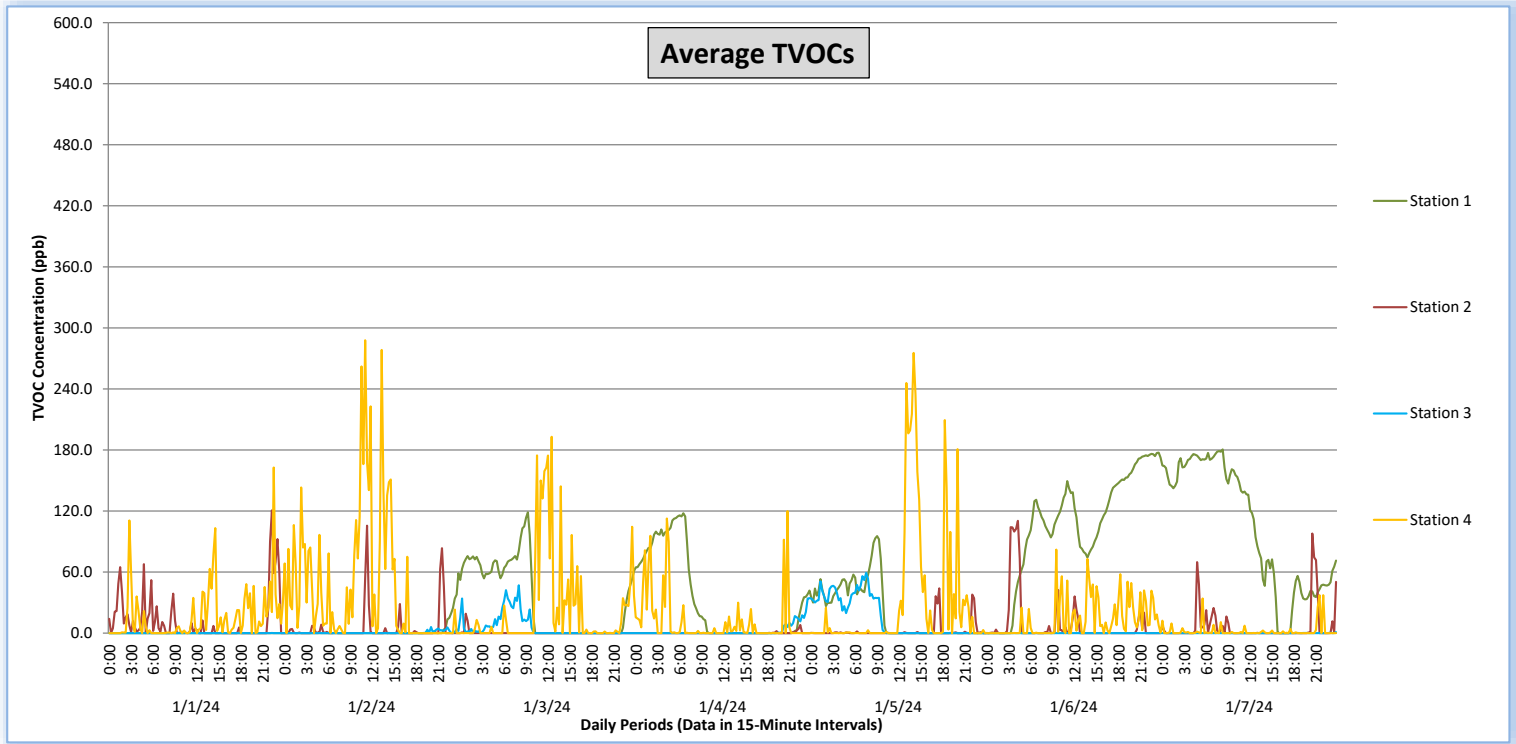


Perimeter Air Monitoring Weekly Report

Real-Time Multigas Monitoring
Bristol Landfill Air Investigation

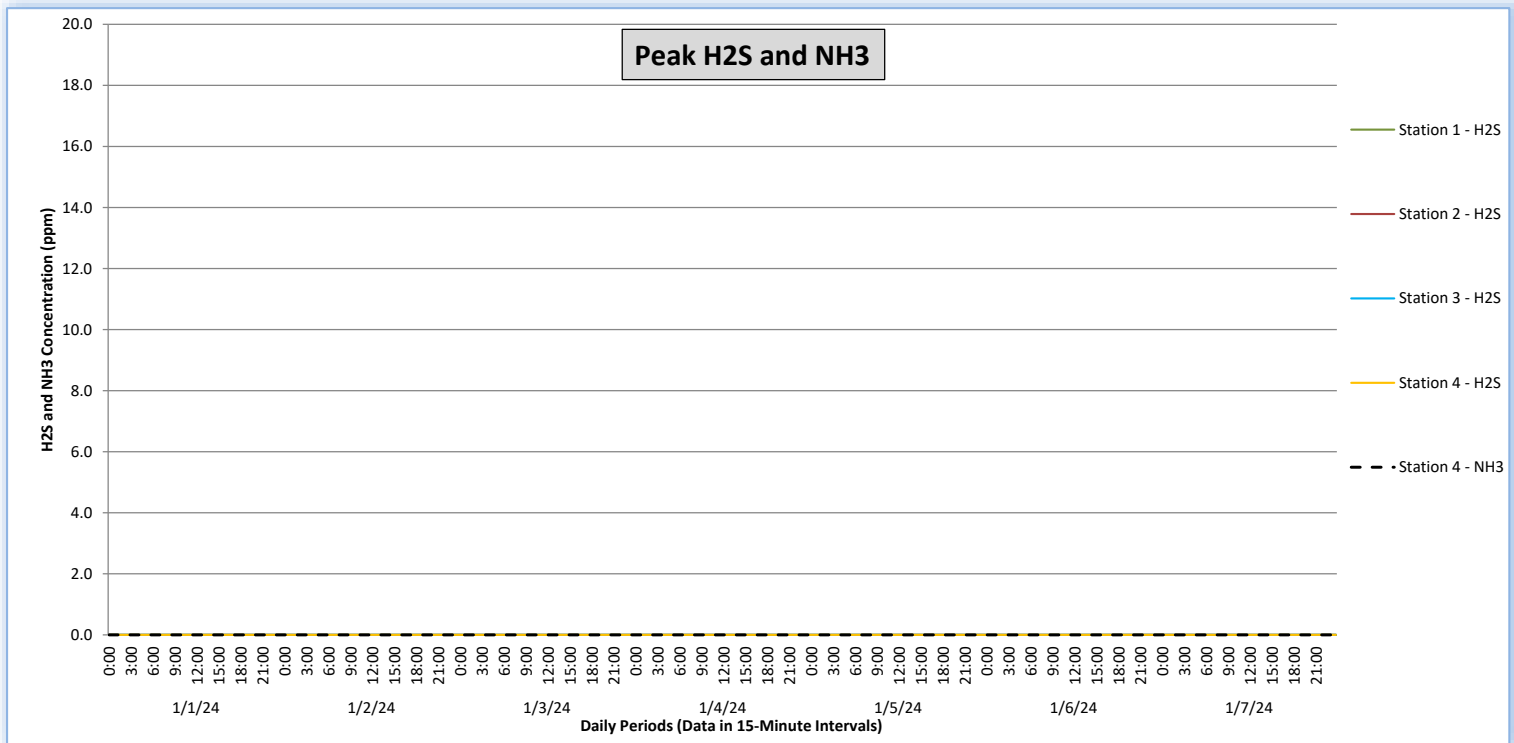
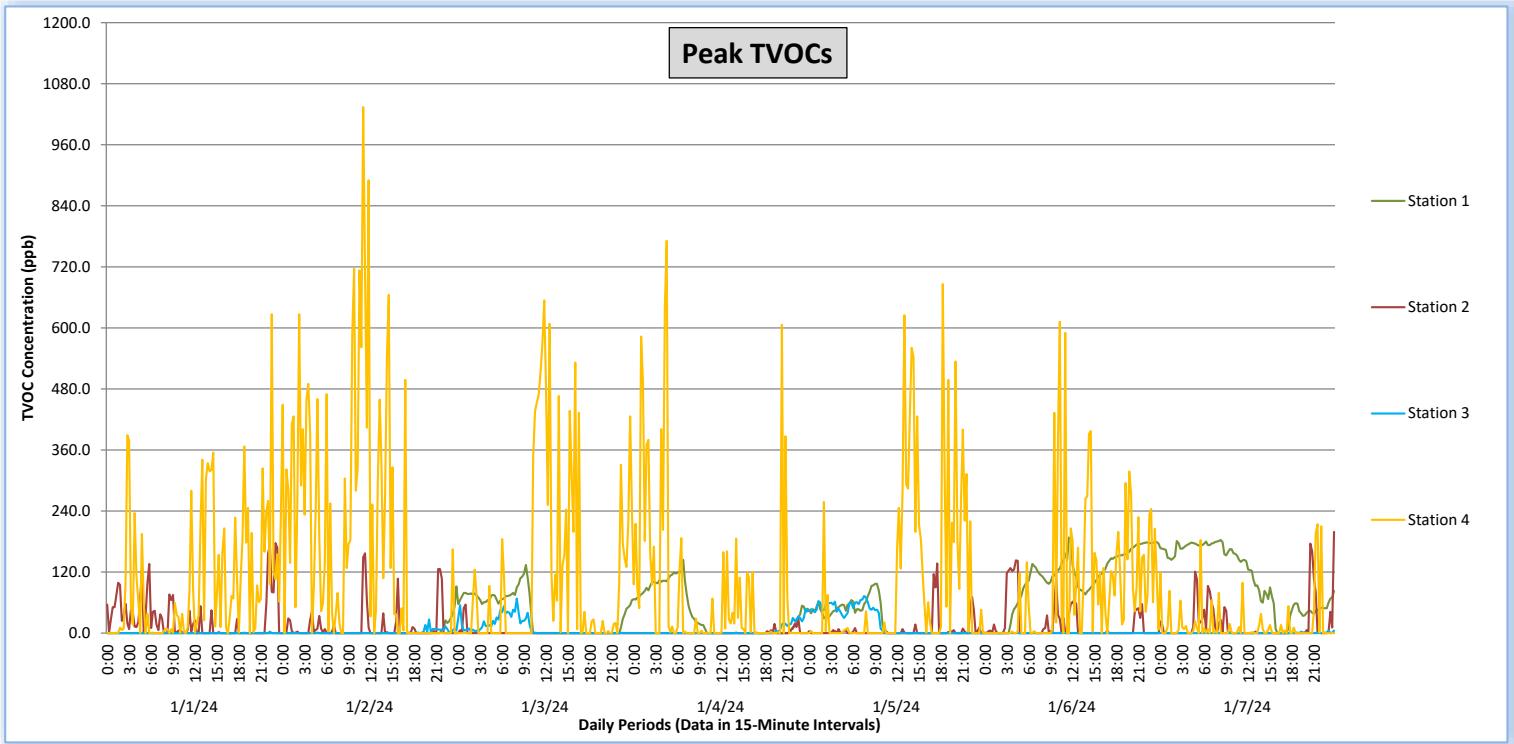
January 1 - January 7, 2024



Perimeter Air Monitoring Weekly Report

Real-Time Multigas Monitoring
Bristol Landfill Air Investigation

January 1 - January 7, 2024





Perimeter Air Monitoring Weekly Report

Real-Time Multigas Monitoring
Bristol Landfill Air Investigation



January 1 - January 7, 2024

Date	Daily Statistics	Station 1				Station 2				Station 3				Station 4					
		TVOCs		H2S		TVOCs		H2S		TVOCs		H2S		TVOCs		H2S		NH3	
		Average ppb	Peak ppb	Average ppm	Peak ppm	Average ppb	Peak ppb	Average ppm	Peak ppm	Average ppb	Peak ppb	Average ppm	Peak ppm	Average ppb	Peak ppb	Average ppm	Peak ppm	Average ppm	Peak ppm
		Values from 15-minute intervals	1-minute max within each 15-minute interval	Values from 15-minute intervals	1-minute max within each 15-minute interval	Values from 15-minute intervals	1-minute max within each 15-minute interval	Values from 15-minute intervals	1-minute max within each 15-minute interval	Values from 15-minute intervals	1-minute max within each 15-minute interval	Values from 15-minute intervals	1-minute max within each 15-minute interval	Values from 15-minute intervals	1-minute max within each 15-minute interval	Values from 15-minute intervals	1-minute max within each 15-minute interval	Values from 15-minute intervals	1-minute max within each 15-minute interval
January 1, 2024	Minimum	0	0	0.0	0.0	0	0	0.0	0.0	0	0	0.0	0.0	0	0	0.0	0.0	0	0
	Maximum	0	0	0.0	0.0	121	177	0.0	0.0	0	3	0.0	0.0	163	627	0.0	0.0	0	0
	Average	0	0	0.0	0.0	12	28	0.0	0.0	0	0	0.0	0.0	16	100	0.0	0.0	0	0
January 2, 2024	Minimum	0	0	0.0	0.0	0	0	0.0	0.0	0	0	0.0	0.0	0	0	0.0	0.0	0	0
	Maximum	59	92	0.0	0.0	106	157	0.0	0.0	6	27	0.0	0.0	288	1,034	0.0	0.0	0	0
	Average	2	3	0.0	0.0	5	12	0.0	0.0	1	2	0.0	0.0	45	194	0.0	0.0	0	0
January 3, 2024	Minimum	0	0	0.0	0.0	0	0	0.0	0.0	0	0	0.0	0.0	0	0	0.0	0.0	0	0
	Maximum	119	134	0.0	0.0	19	56	0.0	0.0	47	68	0.0	0.0	193	654	0.0	0.0	0	0
	Average	33	36	0.0	0.0	0	1	0.0	0.0	6	10	0.0	0.0	24	110	0.0	0.0	0	0
January 4, 2024	Minimum	0	0	0.0	0.0	0	0	0.0	0.0	0	0	0.0	0.0	0	0	0.0	0.0	0	0
	Maximum	118	144	0.0	0.0	8	29	0.0	0.0	34	48	0.0	0.0	120	771	0.0	0.0	0	0
	Average	34	37	0.0	0.0	0	1	0.0	0.0	2	4	0.0	0.0	12	79	0.0	0.0	0	0
January 5, 2024	Minimum	0	0	0.0	0.0	0	0	0.0	0.0	0	0	0.0	0.0	0	0	0.0	0.0	0	0
	Maximum	95	97	0.0	0.0	44	137	0.0	0.0	59	73	0.0	0.0	275	686	0.0	0.0	0	0
	Average	21	23	0.0	0.0	2	7	0.0	0.0	15	21	0.0	0.0	30	99	0.0	0.0	0	0
January 6, 2024	Minimum	0	0	0.0	0.0	0	0	0.0	0.0	0	0	0.0	0.0	0	0	0.0	0.0	0	0
	Maximum	177	188	0.0	0.0	110	143	0.0	0.0	0	0	0.0	0.0	82	612	0.0	0.0	0	0
	Average	104	108	0.0	0.0	9	18	0.0	0.0	0	0	0.0	0.0	13	92	0.0	0.0	0	0
January 7, 2024	Minimum	0	0	0.0	0.0	0	0	0.0	0.0	0	0	0.0	0.0	0	0	0.0	0.0	0	0
	Maximum	181	183	0.0	0.0	98	199	0.0	0.0	1	5	0.0	0.0	37	214	0.0	0.0	0	0
	Average	105	109	0.0	0.0	7	17	0.0	0.0	0	0	0.0	0.0	2	17	0.0	0.0	0	0

Notes:

- Dash/Blank data records indicate no data is available for that interval
- Calibration readings and data produced during sensor errors are excluded from the report

Perimeter Air Monitoring Weekly Report



Real-Time Multigas Monitoring Bristol Landfill Air Investigation



January 1 - January 7, 2024

Date	Daily Statistics	Bristol Met Station 1					Bristol Met Station 2				
		Wind Dir degrees	Wind Speed mph	Temp °F	RH %	Baro mbar	Wind Dir degrees	Wind Speed mph	Temp °F	RH %	Baro mbar
January 1, 2024	Minimum		1.1	32.2	63.9	946.3		0.4	32.5	60.9	950.3
	Maximum		4.2	40.7	81.7	954.3		6.2	42.4	78.8	958.3
	Average	336	2.3	35.1	73.9	950.6	303	2.2	35.4	70.9	954.6
January 2, 2024	Minimum		0.5	32.2	53.5	951.9		0.1	26.5	52.9	955.3
	Maximum		2.4	42.6	84.0	955.8		3.1	42.0	83.8	959.8
	Average	328	1.5	34.8	72.9	954.1	316	1.2	33.7	72.4	957.4
January 3, 2024	Minimum		0.4	29.4	58.0	946.5		0.1	21.8	58.9	950.4
	Maximum		2.7	42.9	92.0	949.8		2.9	42.0	87.0	955.4
	Average	261	1.2	37.7	72.1	947.7	30	1.0	33.0	75.5	952.5
January 4, 2024	Minimum		0.8	31.5	59.9	947.5		0.1	21.3	56.5	951.1
	Maximum		5.7	36.1	93.0	954.0		3.0	35.4	87.0	959.4
	Average	22	3.1	33.4	72.7	952.2	318	1.2	31.0	76.5	955.6
January 5, 2024	Minimum		0.2	32.6	35.6	949.6		0.1	18.4	35.2	952.0
	Maximum		2.2	49.6	67.2	955.6		3.9	48.6	85.9	959.6
	Average	318	0.9	43.5	45.6	951.7	81	1.4	31.9	64.9	956.3
January 6, 2024	Minimum		0.1	42.0	86.0	935.0		0.1	34.4	55.9	938.9
	Maximum		3.6	45.8	95.6	938.1		7.4	46.7	88.0	952.2
	Average	175	1.5	44.1	93.8	936.8	66	1.9	42.3	83.4	942.5
January 7, 2024	Minimum		0.4	34.9	84.9	938.0		0.4	34.7	75.2	942.0
	Maximum		5.5	41.6	95.0	951.7		7.3	42.4	87.0	958.0
	Average	305	2.2	37.8	93.1	943.5	298	3.3	37.8	83.3	949.3

Notes:

- Dash/Blank data records indicate no data is available for that interval
- Wind direction is a daily (24-hr) average value; with the origin of wind in degrees; clockwise from North calculated with vector averaging