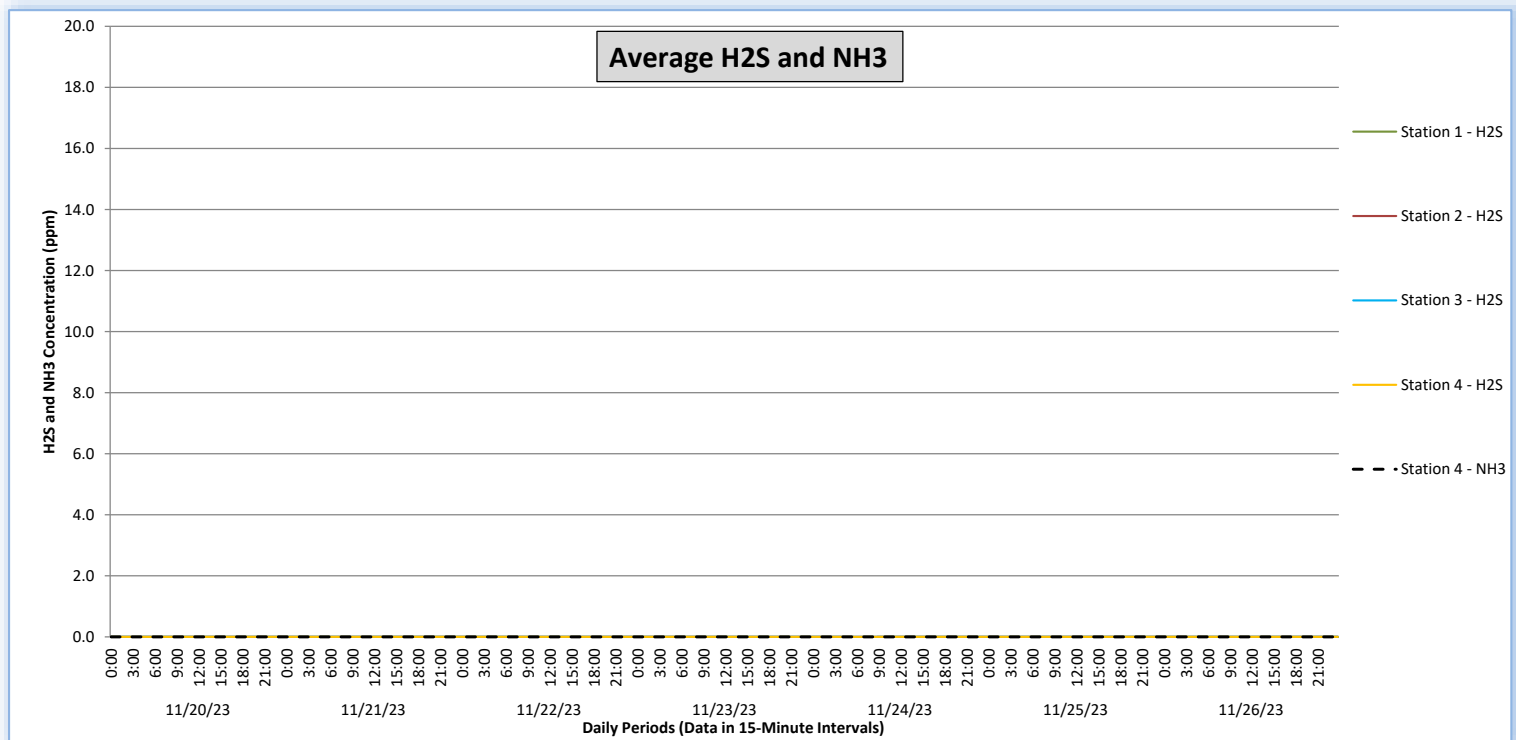
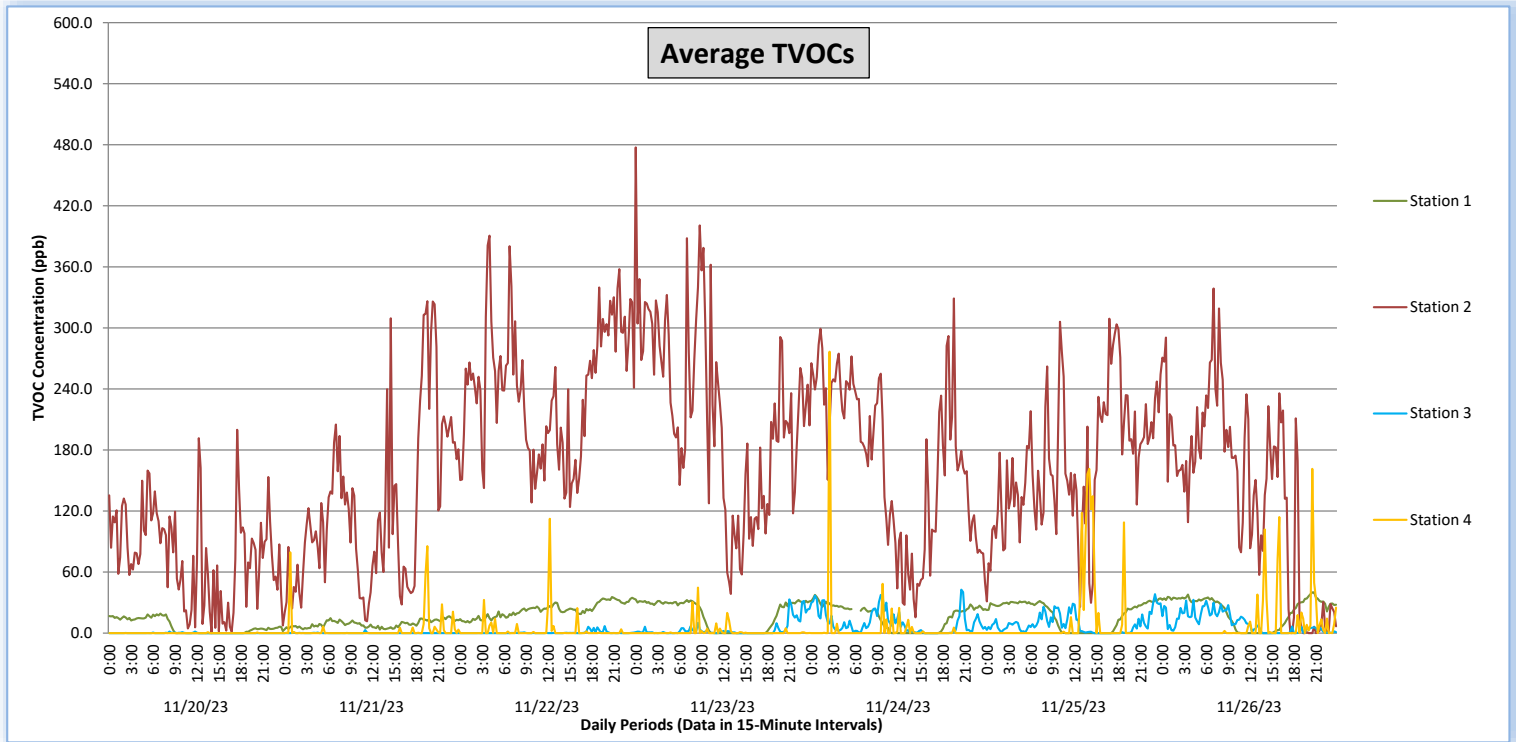


Perimeter Air Monitoring Weekly Report

Real-Time Multigas Monitoring
Bristol Landfill Air Investigation

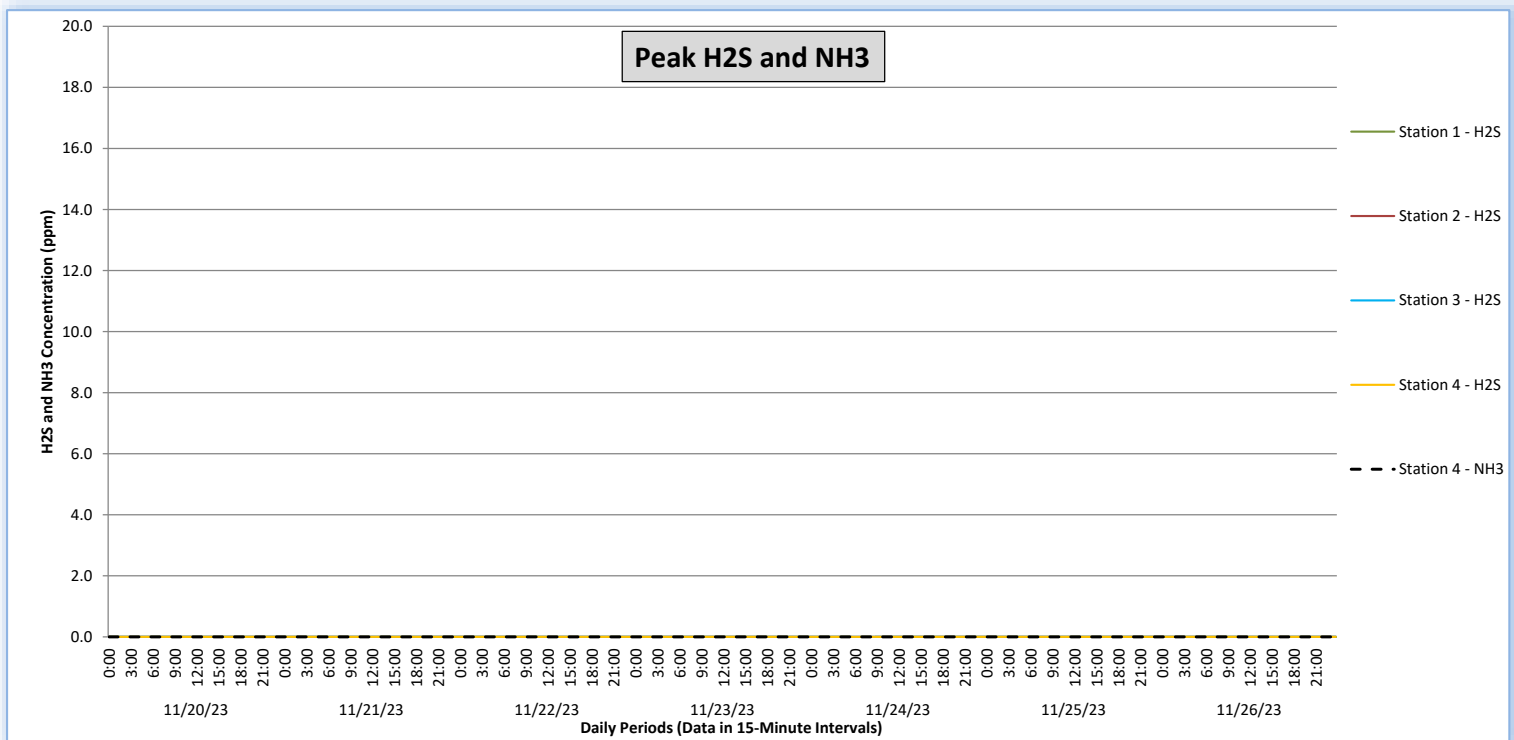
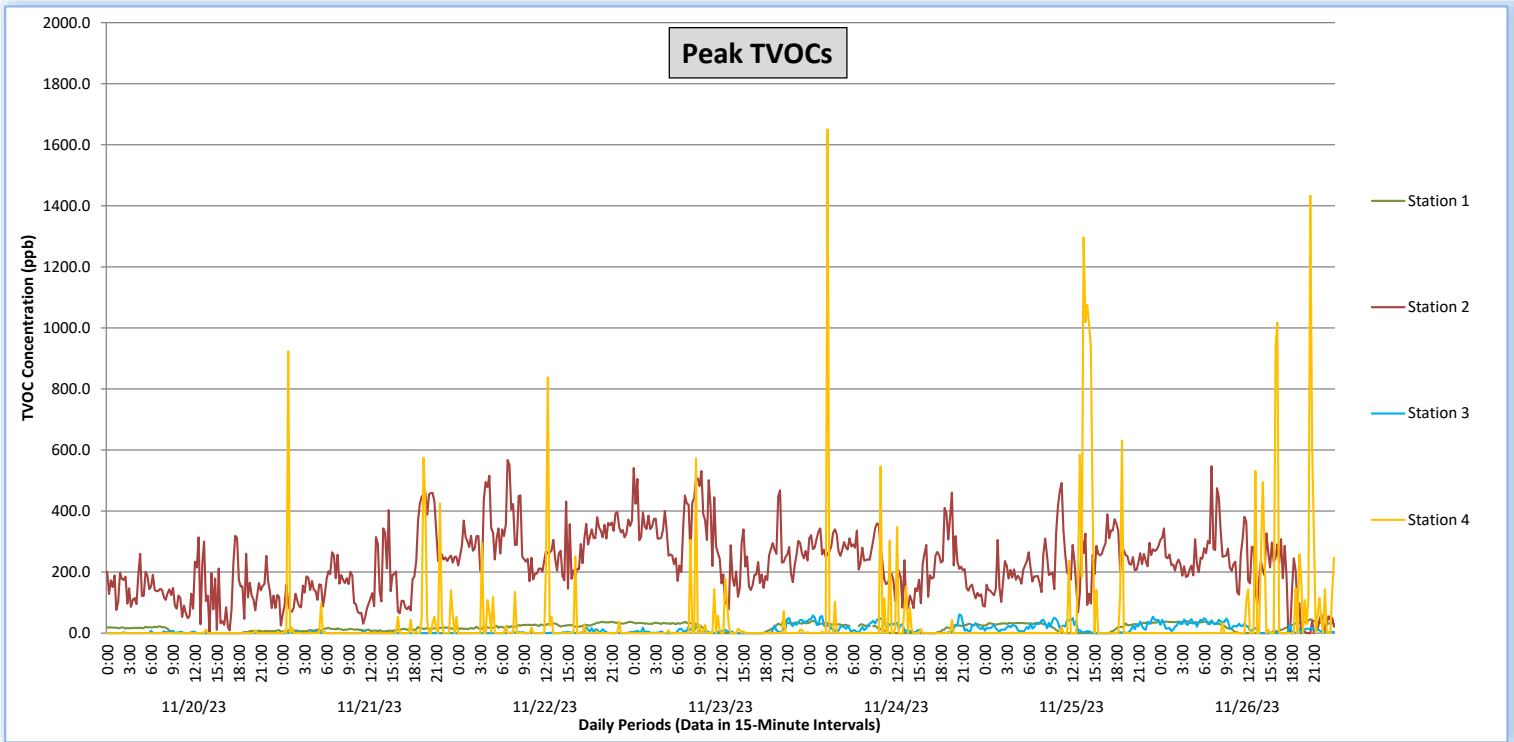
November 20 - November 26, 2023



Perimeter Air Monitoring Weekly Report

Real-Time Multigas Monitoring
Bristol Landfill Air Investigation

November 20 - November 26, 2023





Perimeter Air Monitoring Weekly Report

Real-Time Multigas Monitoring
Bristol Landfill Air Investigation



November 20 - November 26, 2023

Date	Daily Statistics	Station 1				Station 2				Station 3				Station 4					
		TVOCs		H2S		TVOCs		H2S		TVOCs		H2S		TVOCs		H2S		NH3	
		Average ppb	Peak ppb	Average ppm	Peak ppm	Average ppb	Peak ppb	Average ppm	Peak ppm	Average ppb	Peak ppb	Average ppm	Peak ppm	Average ppb	Peak ppb	Average ppm	Peak ppm	Average ppm	Peak ppm
		Values from 15-minute intervals	1-minute max within each 15-minute interval	Values from 15-minute intervals	1-minute max within each 15-minute interval	Values from 15-minute intervals	1-minute max within each 15-minute interval	Values from 15-minute intervals	1-minute max within each 15-minute interval	Values from 15-minute intervals	1-minute max within each 15-minute interval	Values from 15-minute intervals	1-minute max within each 15-minute interval	Values from 15-minute intervals	1-minute max within each 15-minute interval	Values from 15-minute intervals	1-minute max within each 15-minute interval	Values from 15-minute intervals	1-minute max within each 15-minute interval
November 20, 2023	Minimum	0	0	0.0	0.0	0	0	0.0	0.0	0	0	0.0	0.0	0	0	0.0	0.0	0	0
	Maximum	19	22	0.0	0.0	200	319	0.0	0.0	2	8	0.0	0.0	1	12	0.0	0.0	0	0
	Average	6	8	0.0	0.0	75	135	0.0	0.0	0	1	0.0	0.0	0	0	0.0	0.0	0	0
November 21, 2023	Minimum	3	5	0.0	0.0	12	31	0.0	0.0	0	0	0.0	0.0	0	0	0.0	0.0	0	0
	Maximum	17	20	0.0	0.0	326	462	0.0	0.0	3	9	0.0	0.0	85	923	0.0	0.0	0	0
	Average	9	12	0.0	0.0	124	192	0.0	0.0	0	0	0.0	0.0	3	32	0.0	0.0	0	0
November 22, 2023	Minimum	10	13	0.0	0.0	124	145	0.0	0.0	0	0	0.0	0.0	0	0	0.0	0.0	0	0
	Maximum	35	37	0.0	0.0	391	567	0.0	0.0	7	19	0.0	0.0	112	838	0.0	0.0	0	0
	Average	23	25	0.0	0.0	240	305	0.0	0.0	0	2	0.0	0.0	3	23	0.0	0.0	0	0
November 23, 2023	Minimum	0	0	0.0	0.0	39	78	0.0	0.0	0	0	0.0	0.0	0	0	0.0	0.0	0	0
	Maximum	33	52	0.0	0.0	477	541	0.0	0.0	33	50	0.0	0.0	45	573	0.0	0.0	0	0
	Average	18	20	0.0	0.0	214	290	0.0	0.0	4	9	0.0	0.0	1	17	0.0	0.0	0	0
November 24, 2023	Minimum	0	0	0.0	0.0	16	82	0.0	0.0	0	0	0.0	0.0	0	0	0.0	0.0	0	0
	Maximum	38	40	0.0	0.0	329	460	0.0	0.0	43	61	0.0	0.0	277	1,651	0.0	0.0	0	0
	Average	15	17	0.0	0.0	166	233	0.0	0.0	10	19	0.0	0.0	4	36	0.0	0.0	0	0
November 25, 2023	Minimum	0	0	0.0	0.0	26	68	0.0	0.0	0	0	0.0	0.0	0	0	0.0	0.0	0	0
	Maximum	34	36	0.0	0.0	309	492	0.0	0.0	38	54	0.0	0.0	161	1,296	0.0	0.0	0	0
	Average	18	20	0.0	0.0	168	232	0.0	0.0	9	18	0.0	0.0	11	82	0.0	0.0	0	0
November 26, 2023	Minimum	0	0	0.0	0.0	0	0	0.0	0.0	0	0	0.0	0.0	0	0	0.0	0.0	0	0
	Maximum	40	46	0.0	0.0	339	547	0.0	0.0	33	49	0.0	0.0	162	1,433	0.0	0.0	0	0
	Average	22	24	0.0	0.0	137	196	0.0	0.0	10	18	0.0	0.0	8	81	0.0	0.0	0	0

Notes:

- Dash/Blank data records indicate no data is available for that interval
- Calibration readings and data produced during sensor errors are excluded from the report

Perimeter Air Monitoring Weekly Report



Real-Time Multigas Monitoring Bristol Landfill Air Investigation



November 20 - November 26, 2023

Date	Daily Statistics	Bristol Met Station 1					Bristol Met Station 2				
		Wind Dir degrees	Wind Speed mph	Temp °F	RH %	Baro mbar	Wind Dir degrees	Wind Speed mph	Temp °F	RH %	Baro mbar
November 20, 2023	Minimum		0.6	40.6	36.0	948.0		0.1	40.4	37.4	950.8
	Maximum		4.3	64.8	69.2	952.2		6.8	63.5	69.2	955.1
	Average	42	2.1	49.6	55.6	950.2	105	2.6	52.0	50.7	953.6
November 21, 2023	Minimum		--	--	--	--		0.2	51.6	49.7	943.9
	Maximum		--	--	--	--		8.3	56.3	89.0	954.3
	Average	--	--	--	--	--	112	2.8	53.9	77.5	948.3
November 22, 2023	Minimum		--	--	--	--		0.1	38.5	76.3	945.0
	Maximum		--	--	--	--		4.3	52.6	89.0	950.8
	Average	--	--	--	--	--	297	2.0	45.3	84.2	947.3
November 23, 2023	Minimum		0.2	33.2	49.7	948.3		0.1	33.7	51.4	950.5
	Maximum		2.1	53.5	91.0	950.4		3.6	51.9	87.0	953.1
	Average	277	1.0	44.1	70.1	949.4	319	1.0	41.9	74.3	951.7
November 24, 2023	Minimum		0.0	32.9	38.1	949.9		0.1	32.8	38.7	952.6
	Maximum		5.1	58.2	93.0	953.0		3.7	58.3	87.0	956.5
	Average	27	2.0	43.9	73.2	951.0	6	1.2	44.0	70.6	954.2
November 25, 2023	Minimum		3.4	44.5	71.3	955.1		0.2	37.6	45.2	954.1
	Maximum		3.4	44.5	71.3	955.1		4.1	58.1	78.3	958.2
	Average	50	3.4	44.5	71.3	955.1	97	2.2	46.4	66.0	955.9
November 26, 2023	Minimum		0.3	31.6	53.3	941.6		0.1	31.6	53.2	944.3
	Maximum		3.6	54.6	94.0	949.8		4.9	54.0	88.0	954.8
	Average	20	1.6	44.7	73.5	945.2	54	1.9	42.8	72.4	949.1

Notes:

- Dash/Blank data records indicate no data is available for that interval
- Wind direction is a daily (24-hr) average value; with the origin of wind in degrees; clockwise from North calculated with vector averaging