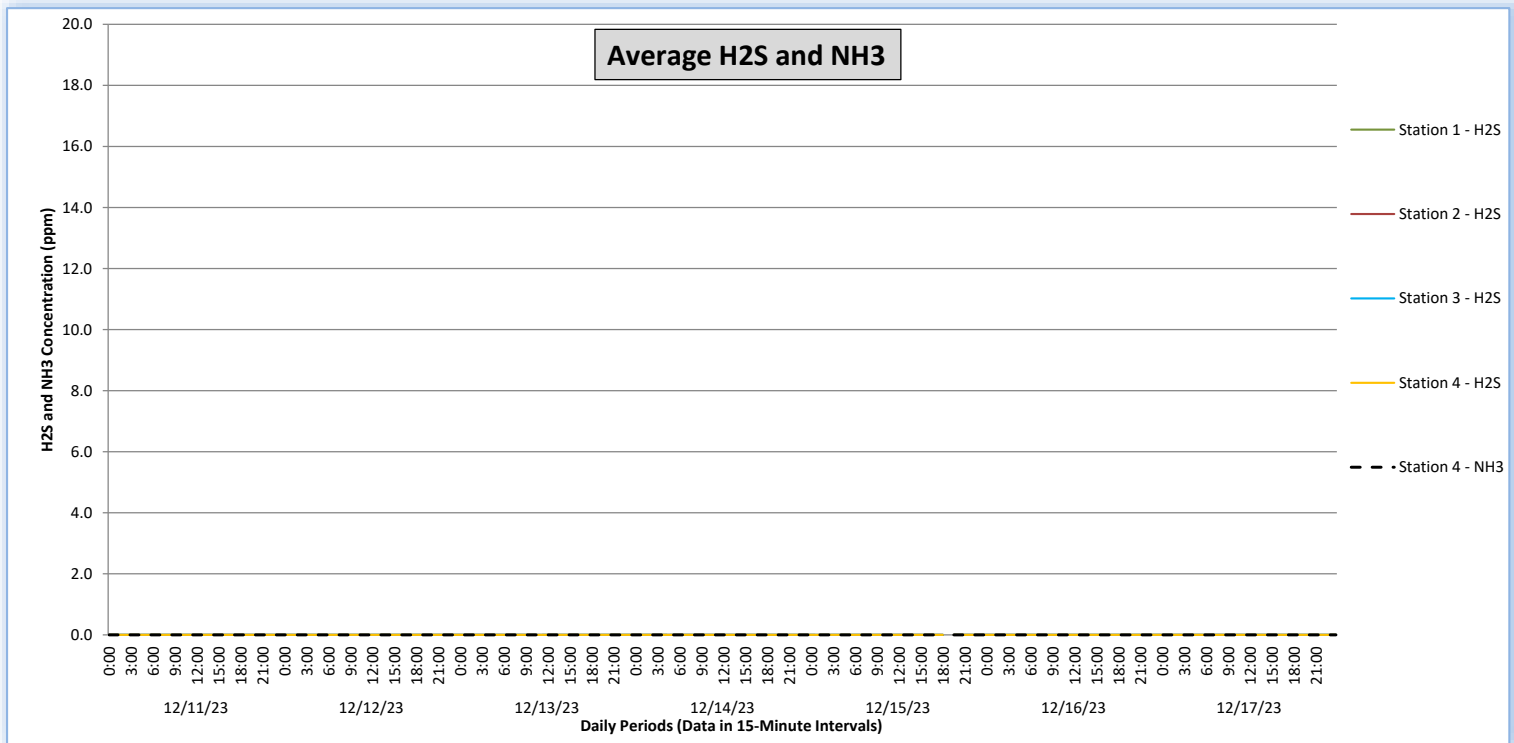
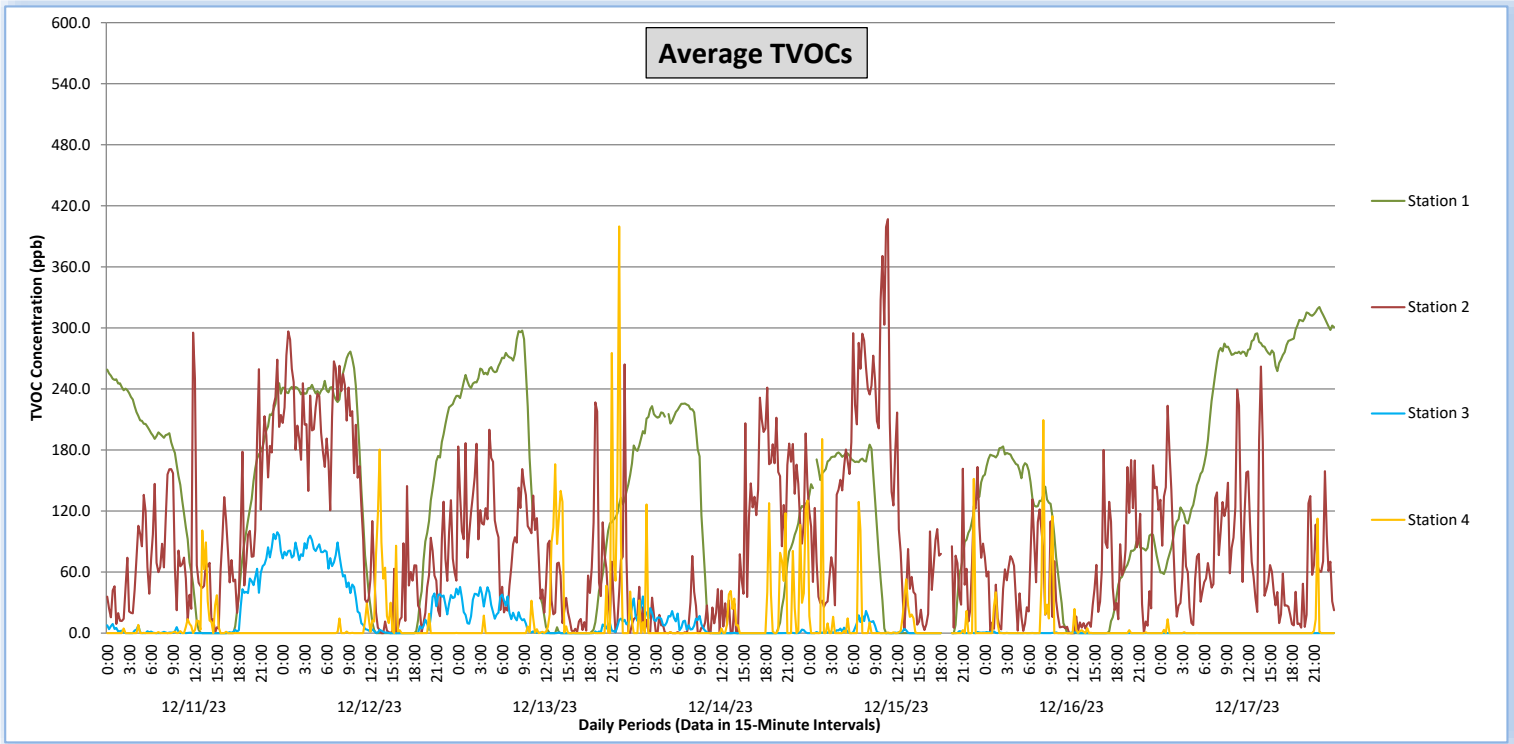


Perimeter Air Monitoring Weekly Report

Real-Time Multigas Monitoring
Bristol Landfill Air Investigation

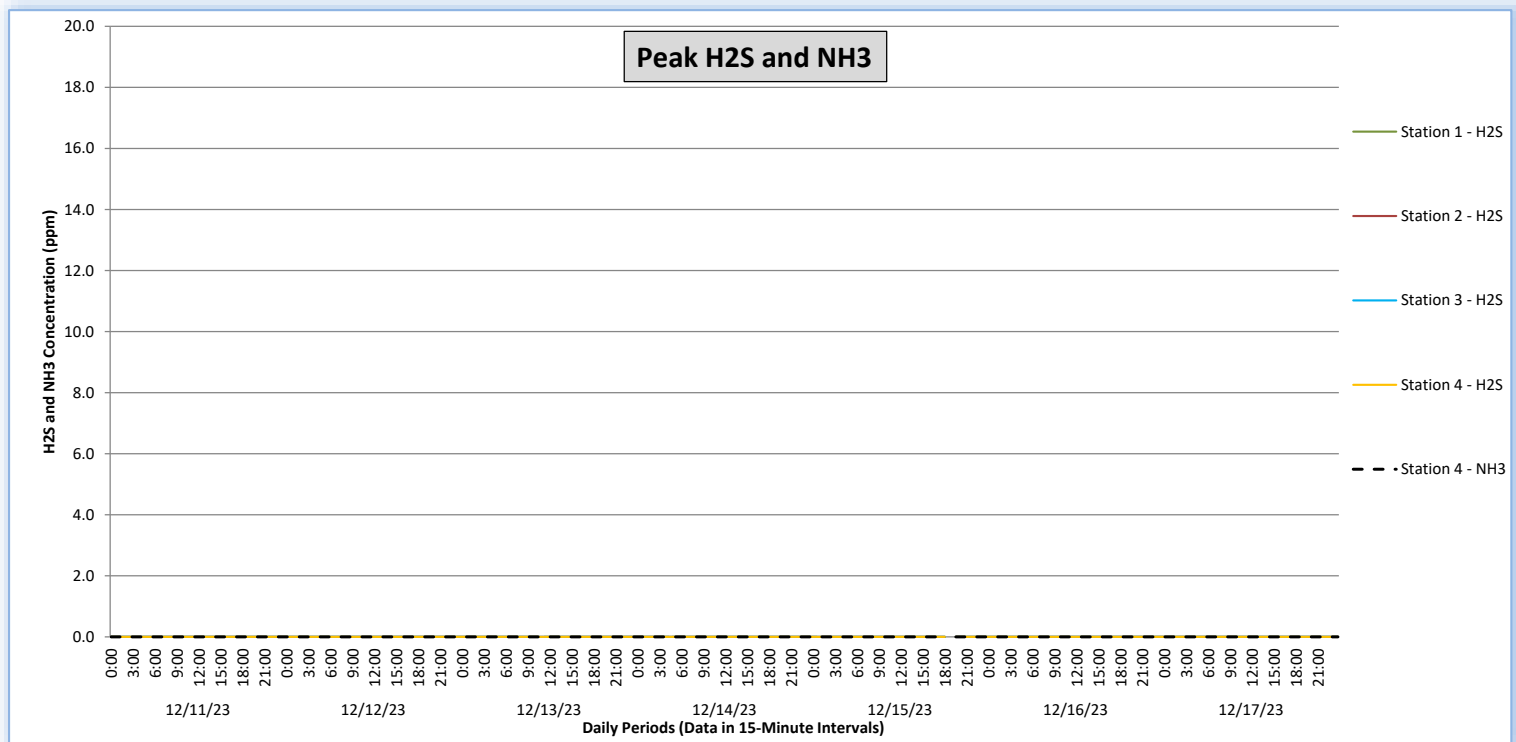
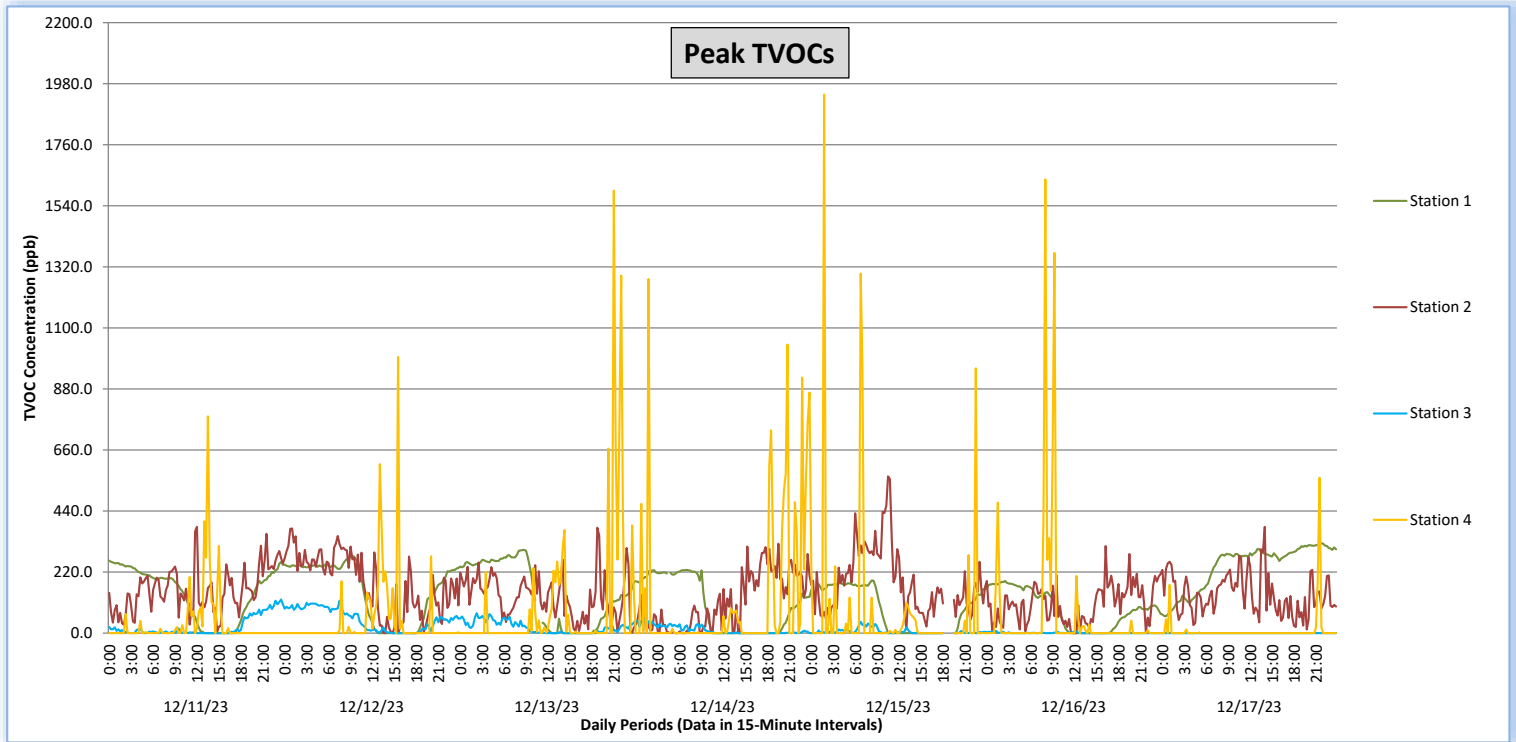
December 11 - December 17, 2023



Perimeter Air Monitoring Weekly Report

Real-Time Multigas Monitoring
Bristol Landfill Air Investigation

December 11 - December 17, 2023





Perimeter Air Monitoring Weekly Report

Real-Time Multigas Monitoring
Bristol Landfill Air Investigation



December 11 - December 17, 2023

Date	Daily Statistics	Station 1				Station 2				Station 3				Station 4					
		TVOCs		H2S		TVOCs		H2S		TVOCs		H2S		TVOCs		H2S		NH3	
		Average ppb	Peak ppb	Average ppm	Peak ppm	Average ppb	Peak ppb	Average ppm	Peak ppm	Average ppb	Peak ppb	Average ppm	Peak ppm	Average ppb	Peak ppb	Average ppm	Peak ppm	Average ppm	Peak ppm
		Values from 15-minute intervals	1-minute max within each 15-minute interval	Values from 15-minute intervals	1-minute max within each 15-minute interval	Values from 15-minute intervals	1-minute max within each 15-minute interval	Values from 15-minute intervals	1-minute max within each 15-minute interval	Values from 15-minute intervals	1-minute max within each 15-minute interval	Values from 15-minute intervals	1-minute max within each 15-minute interval	Values from 15-minute intervals	1-minute max within each 15-minute interval	Values from 15-minute intervals	1-minute max within each 15-minute interval	Values from 15-minute intervals	1-minute max within each 15-minute interval
December 11, 2023	Minimum	0	0	0.0	0.0	0	5	0.0	0.0	0	0	0.0	0.0	0	0	0.0	0.0	0	0
	Maximum	259	261	0.0	0.0	295	383	0.0	0.0	99	121	0.0	0.0	101	781	0.0	0.0	0	0
	Average	139	143	0.0	0.0	89	155	0.0	0.0	16	23	0.0	0.0	5	35	0.0	0.0	0	0
December 12, 2023	Minimum	0	0	0.0	0.0	0	0	0.0	0.0	0	0	0.0	0.0	0	0	0.0	0.0	0	0
	Maximum	277	278	0.0	0.0	297	377	0.0	0.0	96	117	0.0	0.0	180	995	0.0	0.0	0	0
	Average	148	153	0.0	0.0	122	181	0.0	0.0	38	49	0.0	0.0	9	43	0.0	0.0	0	0
December 13, 2023	Minimum	0	0	0.0	0.0	0	2	0.0	0.0	0	0	0.0	0.0	0	0	0.0	0.0	0	0
	Maximum	297	300	0.0	0.0	264	380	0.0	0.0	45	72	0.0	0.0	400	1,594	0.0	0.0	0	0
	Average	138	142	0.0	0.0	77	132	0.0	0.0	12	21	0.0	0.0	22	92	0.0	0.0	0	0
December 14, 2023	Minimum	0	0	0.0	0.0	0	0	0.0	0.0	0	0	0.0	0.0	0	0	0.0	0.0	0	0
	Maximum	226	228	0.0	0.0	241	322	0.0	0.0	36	51	0.0	0.0	130	1,276	0.0	0.0	0	0
	Average	97	100	0.0	0.0	66	112	0.0	0.0	6	12	0.0	0.0	15	113	0.0	0.0	0	0
December 15, 2023	Minimum	0	0	0.0	0.0	3	14	0.0	0.0	0	0	0.0	0.0	0	0	0.0	0.0	0	0
	Maximum	185	190	0.0	0.0	407	565	0.0	0.0	22	41	0.0	0.0	191	1,941	0.0	0.0	0	0
	Average	87	91	0.0	0.0	123	184	0.0	0.0	2	6	0.0	0.0	9	75	0.0	0.0	0	0
December 16, 2023	Minimum	0	0	0.0	0.0	0	0	0.0	0.0	0	0	0.0	0.0	0	0	0.0	0.0	0	0
	Maximum	184	188	0.0	0.0	180	314	0.0	0.0	2	8	0.0	0.0	209	1,635	0.0	0.0	0	0
	Average	85	88	0.0	0.0	52	105	0.0	0.0	0	1	0.0	0.0	6	63	0.0	0.0	0	0
December 17, 2023	Minimum	58	61	0.0	0.0	5	13	0.0	0.0	0	0	0.0	0.0	0	0	0.0	0.0	0	0
	Maximum	321	324	0.0	0.0	262	383	0.0	0.0	0	0	0.0	0.0	113	560	0.0	0.0	0	0
	Average	238	242	0.0	0.0	77	138	0.0	0.0	0	0	0.0	0.0	2	11	0.0	0.0	0	0

Notes:

- Dash/Blank data records indicate no data is available for that interval
- Calibration readings and data produced during sensor errors are excluded from the report

Perimeter Air Monitoring Weekly Report



Real-Time Multigas Monitoring Bristol Landfill Air Investigation



December 11 - December 17, 2023

Date	Daily Statistics	Bristol Met Station 1					Bristol Met Station 2				
		Wind Dir degrees	Wind Speed mph	Temp °F	RH %	Baro mbar	Wind Dir degrees	Wind Speed mph	Temp °F	RH %	Baro mbar
December 11, 2023	Minimum		0.5	33.6	52.4	951.7		0.1	24.8	53.3	948.4
	Maximum		2.7	41.7	71.0	953.1		4.4	40.8	87.0	961.1
	Average	330	1.6	37.7	61.0	952.1	307	2.0	32.8	71.7	955.3
December 12, 2023	Minimum		0.1	26.5	39.3	960.9		0.1	21.4	40.7	961.1
	Maximum		2.2	48.4	93.0	962.4		2.7	47.5	87.3	968.3
	Average	232	1.0	41.4	58.6	961.5	93	0.9	32.4	73.2	965.1
December 13, 2023	Minimum		0.1	28.1	40.3	965.3		0.1	24.8	40.8	968.2
	Maximum		3.2	53.8	89.0	967.4		1.8	53.0	85.7	971.6
	Average	266	1.0	42.8	59.6	966.3	101	0.9	37.0	69.1	969.8
December 14, 2023	Minimum		0.2	30.6	26.5	966.0		0.1	25.8	25.5	968.8
	Maximum		3.4	56.0	76.5	969.7		4.1	54.6	84.4	973.8
	Average	51	2.1	48.2	37.4	967.8	106	1.1	37.5	61.5	971.1
December 15, 2023	Minimum		0.1	32.2	21.7	959.3		0.0	26.5	21.1	963.3
	Maximum		2.3	62.7	75.0	964.5		3.5	62.6	81.3	968.8
	Average	36	1.2	47.8	45.0	961.1	116	1.1	40.4	58.4	966.3
December 16, 2023	Minimum		0.3	30.7	29.2	952.2		0.1	30.6	30.2	955.5
	Maximum		4.4	60.5	78.9	959.9		5.1	60.8	78.4	963.9
	Average	119	1.9	45.5	55.1	956.6	115	2.2	46.0	54.1	960.3
December 17, 2023	Minimum		--	--	--	--		0.3	47.0	46.1	939.5
	Maximum		--	--	--	--		5.3	51.6	88.0	955.6
	Average	--	--	--	--	--	78	2.4	48.9	76.9	947.1

Notes:

- Dash/Blank data records indicate no data is available for that interval
- Wind direction is a daily (24-hr) average value; with the origin of wind in degrees; clockwise from North calculated with vector averaging