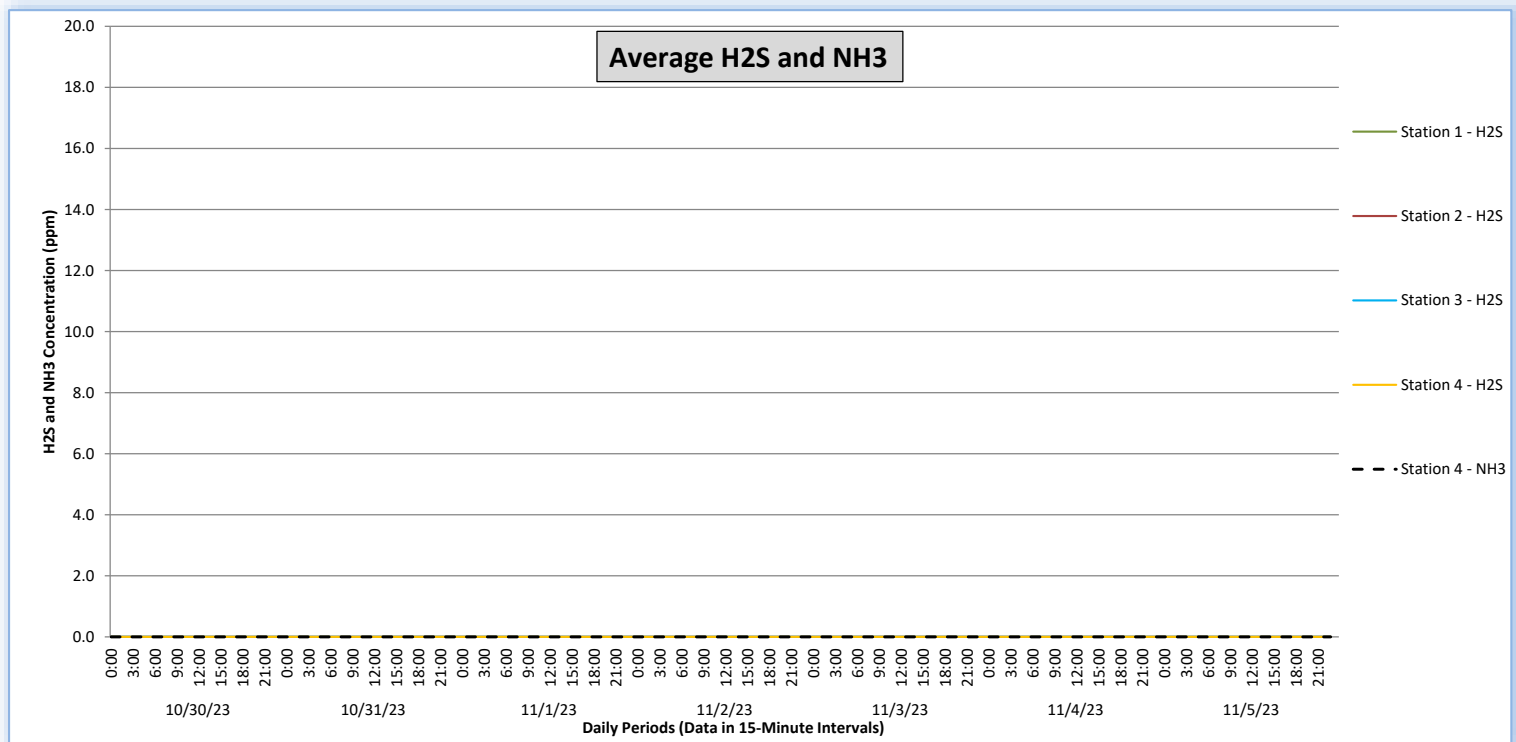
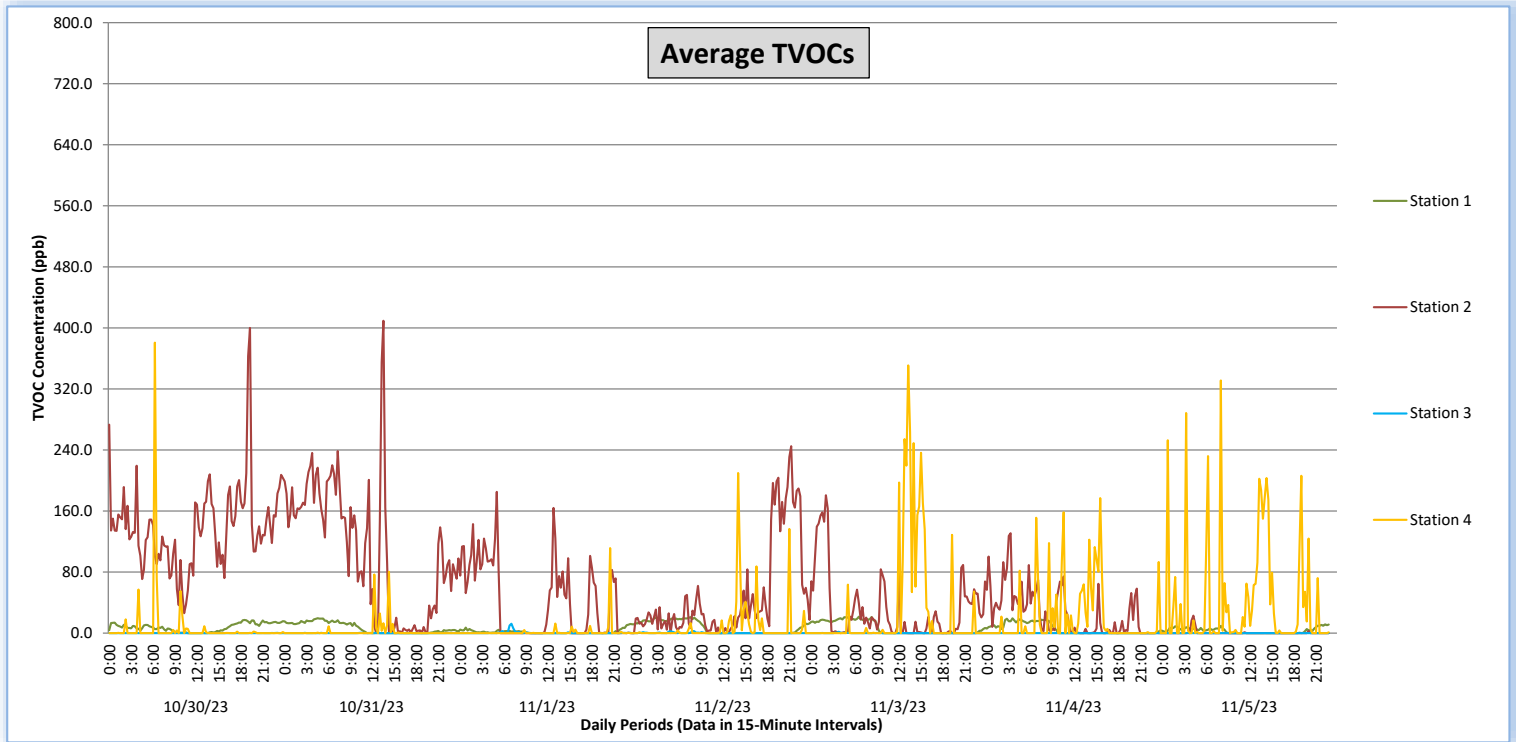


Perimeter Air Monitoring Weekly Report

Real-Time Multigas Monitoring
Bristol Landfill Air Investigation

October 30 - November 5, 2023



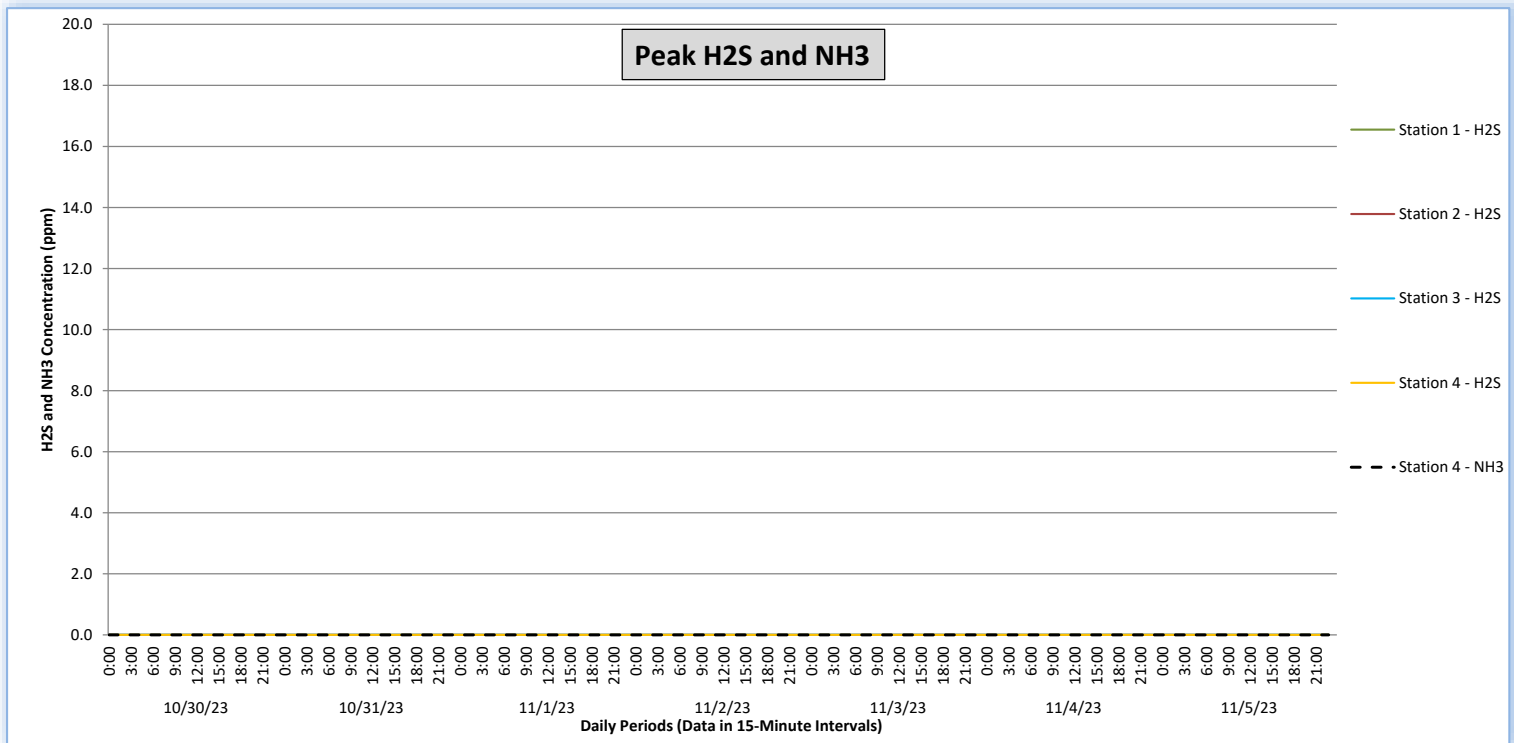
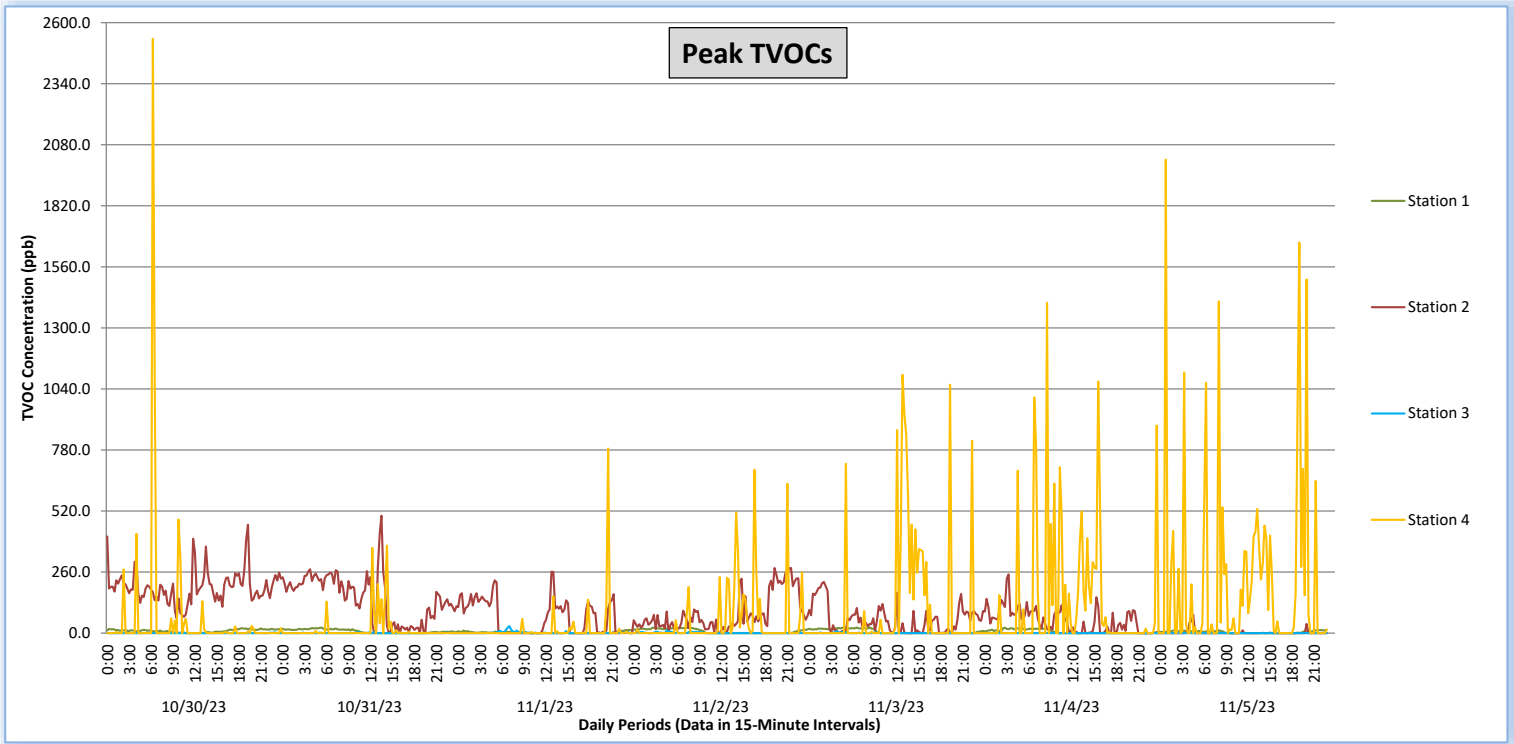
Perimeter Air Monitoring Weekly Report



Real-Time Multigas Monitoring
Bristol Landfill Air Investigation



October 30 - November 5, 2023





Perimeter Air Monitoring Weekly Report

Real-Time Multigas Monitoring Bristol Landfill Air Investigation



October 30 - November 5, 2023

Date	Daily Statistics	Station 1				Station 2				Station 3				Station 4					
		TVOCs		H2S		TVOCs		H2S		TVOCs		H2S		TVOCs		H2S		NH3	
		Average ppb	Peak ppb	Average ppm	Peak ppm	Average ppb	Peak ppb	Average ppm	Peak ppm	Average ppb	Peak ppb	Average ppm	Peak ppm	Average ppb	Peak ppb	Average ppm	Peak ppm	Average ppm	Peak ppm
		Values from 15-minute intervals	1-minute max within each 15-minute interval	Values from 15-minute intervals	1-minute max within each 15-minute interval	Values from 15-minute intervals	1-minute max within each 15-minute interval	Values from 15-minute intervals	1-minute max within each 15-minute interval	Values from 15-minute intervals	1-minute max within each 15-minute interval	Values from 15-minute intervals	1-minute max within each 15-minute interval	Values from 15-minute intervals	1-minute max within each 15-minute interval	Values from 15-minute intervals	1-minute max within each 15-minute interval	Values from 15-minute intervals	1-minute max within each 15-minute interval
October 30, 2023	Minimum	0	0	0.0	0.0	26	62	0.0	0.0	0	0	0.0	0.0	0	0	0.0	0.0	0	0
	Maximum	17	21	0.0	0.0	400	462	0.0	0.0	0	3	0.0	0.0	381	2,531	0.0	0.0	0	0
	Average	8	10	0.0	0.0	139	197	0.0	0.0	0	0	0.0	0.0	7	58	0.0	0.0	0	0
October 31, 2023	Minimum	0	0	0.0	0.0	0	0	0.0	0.0	0	0	0.0	0.0	0	0	0.0	0.0	0	0
	Maximum	20	24	0.0	0.0	409	500	0.0	0.0	1	4	0.0	0.0	80	373	0.0	0.0	0	0
	Average	7	8	0.0	0.0	108	150	0.0	0.0	0	0	0.0	0.0	3	17	0.0	0.0	0	0
November 1, 2023	Minimum	0	0	0.0	0.0	0	0	0.0	0.0	0	0	0.0	0.0	0	0	0.0	0.0	0	0
	Maximum	12	13	0.0	0.0	185	262	0.0	0.0	12	30	0.0	0.0	111	786	0.0	0.0	0	0
	Average	2	3	0.0	0.0	40	64	0.0	0.0	0	2	0.0	0.0	2	15	0.0	0.0	0	0
November 2, 2023	Minimum	0	0	0.0	0.0	0	0	0.0	0.0	0	0	0.0	0.0	0	0	0.0	0.0	0	0
	Maximum	21	24	0.0	0.0	245	277	0.0	0.0	3	11	0.0	0.0	210	696	0.0	0.0	0	0
	Average	8	9	0.0	0.0	50	84	0.0	0.0	0	1	0.0	0.0	9	50	0.0	0.0	0	0
November 3, 2023	Minimum	0	0	0.0	0.0	0	0	0.0	0.0	0	0	0.0	0.0	0	0	0.0	0.0	0	0
	Maximum	22	25	0.0	0.0	181	218	0.0	0.0	2	9	0.0	0.0	351	1,100	0.0	0.0	0	0
	Average	7	8	0.0	0.0	31	58	0.0	0.0	0	1	0.0	0.0	31	111	0.0	0.0	0	0
November 4, 2023	Minimum	0	0	0.0	0.0	0	0	0.0	0.0	0	0	0.0	0.0	0	0	0.0	0.0	0	0
	Maximum	19	23	0.0	0.0	131	250	0.0	0.0	0	2	0.0	0.0	177	1,407	0.0	0.0	0	0
	Average	5	6	0.0	0.0	26	53	0.0	0.0	0	0	0.0	0.0	20	134	0.0	0.0	0	0
November 5, 2023	Minimum	0	0	0.0	0.0	0	0	0.0	0.0	0	0	0.0	0.0	0	0	0.0	0.0	0	0
	Maximum	12	14	0.0	0.0	23	78	0.0	0.0	0	1	0.0	0.0	331	2,017	0.0	0.0	0	0
	Average	3	4	0.0	0.0	1	3	0.0	0.0	0	0	0.0	0.0	41	221	0.0	0.0	0	0

Notes:

- Dash/Blank data records indicate no data is available for that interval
- Calibration readings and data produced during sensor errors are excluded from the report

Perimeter Air Monitoring Weekly Report



Real-Time Multigas Monitoring Bristol Landfill Air Investigation



October 30 - November 5, 2023

Date	Daily Statistics	Bristol Met Station 1					Bristol Met Station 2				
		Wind Dir degrees	Wind Speed mph	Temp °F	RH %	Baro mbar	Wind Dir degrees	Wind Speed mph	Temp °F	RH %	Baro mbar
October 30, 2023	Minimum		0.2	45.6	71.2	944.2		0.1	45.7	72.2	947.2
	Maximum		3.9	69.1	95.0	949.3		5.3	67.8	88.9	952.3
	Average	27	1.4	54.9	89.1	946.8	309	1.8	54.9	83.9	949.7
October 31, 2023	Minimum		0.5	39.0	63.7	946.8		0.3	39.5	59.9	949.7
	Maximum		3.8	50.8	92.0	949.8		4.8	50.3	85.9	952.8
	Average	358	2.0	44.3	79.8	948.6	297	1.9	44.4	75.9	951.6
November 1, 2023	Minimum		0.2	26.4	33.9	949.9		0.5	28.2	32.4	952.9
	Maximum		6.2	44.4	80.4	958.1		6.8	43.7	73.3	961.2
	Average	21	2.2	35.4	56.7	955.2	297	2.5	35.1	53.5	958.2
November 2, 2023	Minimum		0.1	22.7	24.3	958.1		0.1	24.5	21.0	961.1
	Maximum		3.0	53.2	87.6	961.9		3.9	53.6	80.0	964.9
	Average	18	1.0	33.7	64.9	960.0	24	1.3	36.8	57.5	962.9
November 3, 2023	Minimum		0.1	26.2	15.1	956.3		0.1	26.9	15.5	959.2
	Maximum		2.1	65.8	83.9	960.8		4.7	64.3	80.6	963.8
	Average	350	1.0	43.4	51.0	958.5	321	1.1	43.1	53.0	961.5
November 4, 2023	Minimum		0.1	28.6	24.7	952.5		0.1	29.4	25.5	955.4
	Maximum		2.4	66.6	84.4	957.3		3.2	64.3	79.6	960.4
	Average	340	0.8	46.7	53.2	955.0	342	1.1	46.3	54.7	958.0
November 5, 2023	Minimum		0.1	40.7	35.8	948.9		0.1	40.5	38.4	951.8
	Maximum		2.0	70.4	83.0	952.5		3.8	68.0	80.2	955.5
	Average	254	0.9	53.1	58.6	950.9	301	0.9	52.3	61.0	953.9

Notes:

- Dash/Blank data records indicate no data is available for that interval
- Wind direction is a daily (24-hr) average value; with the origin of wind in degrees; clockwise from North calculated with vector averaging