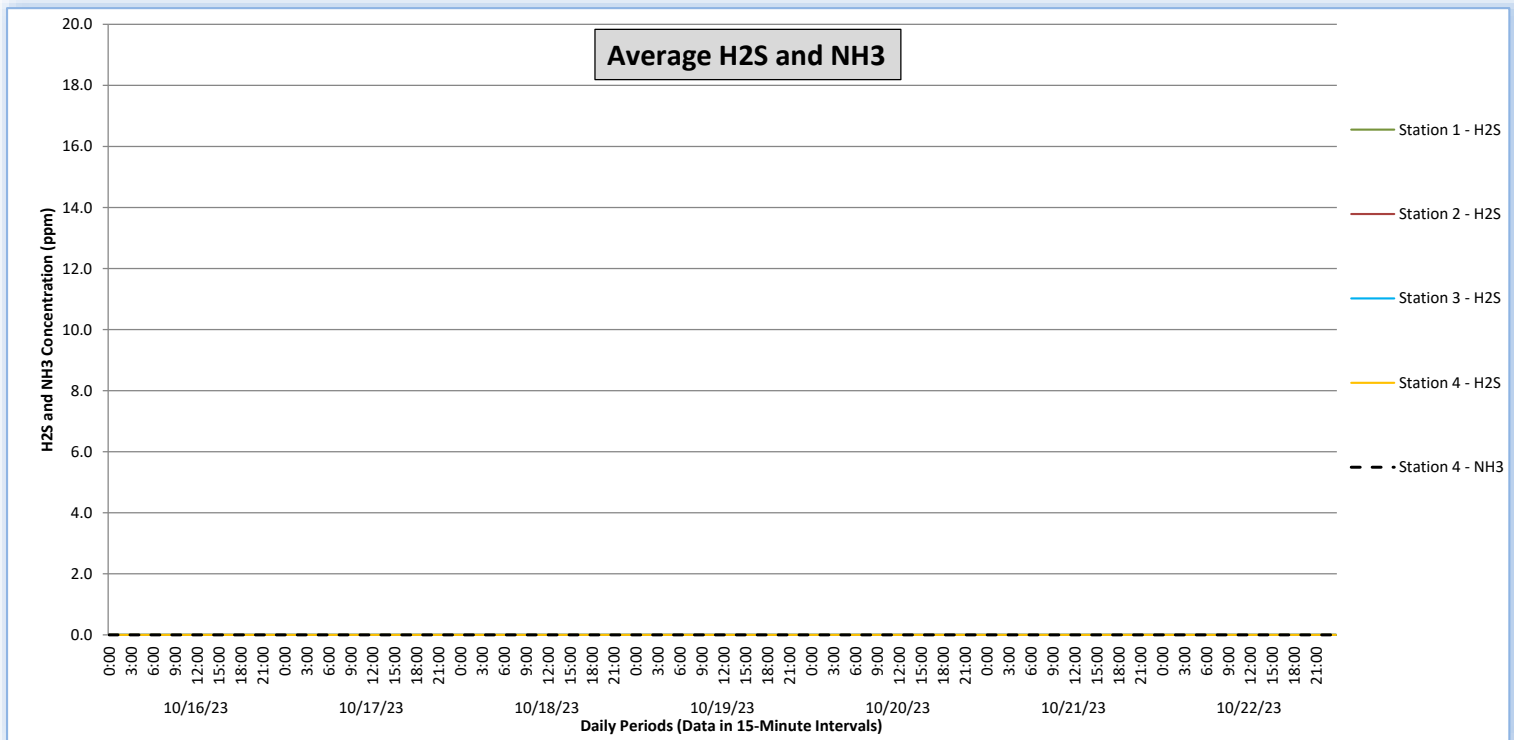
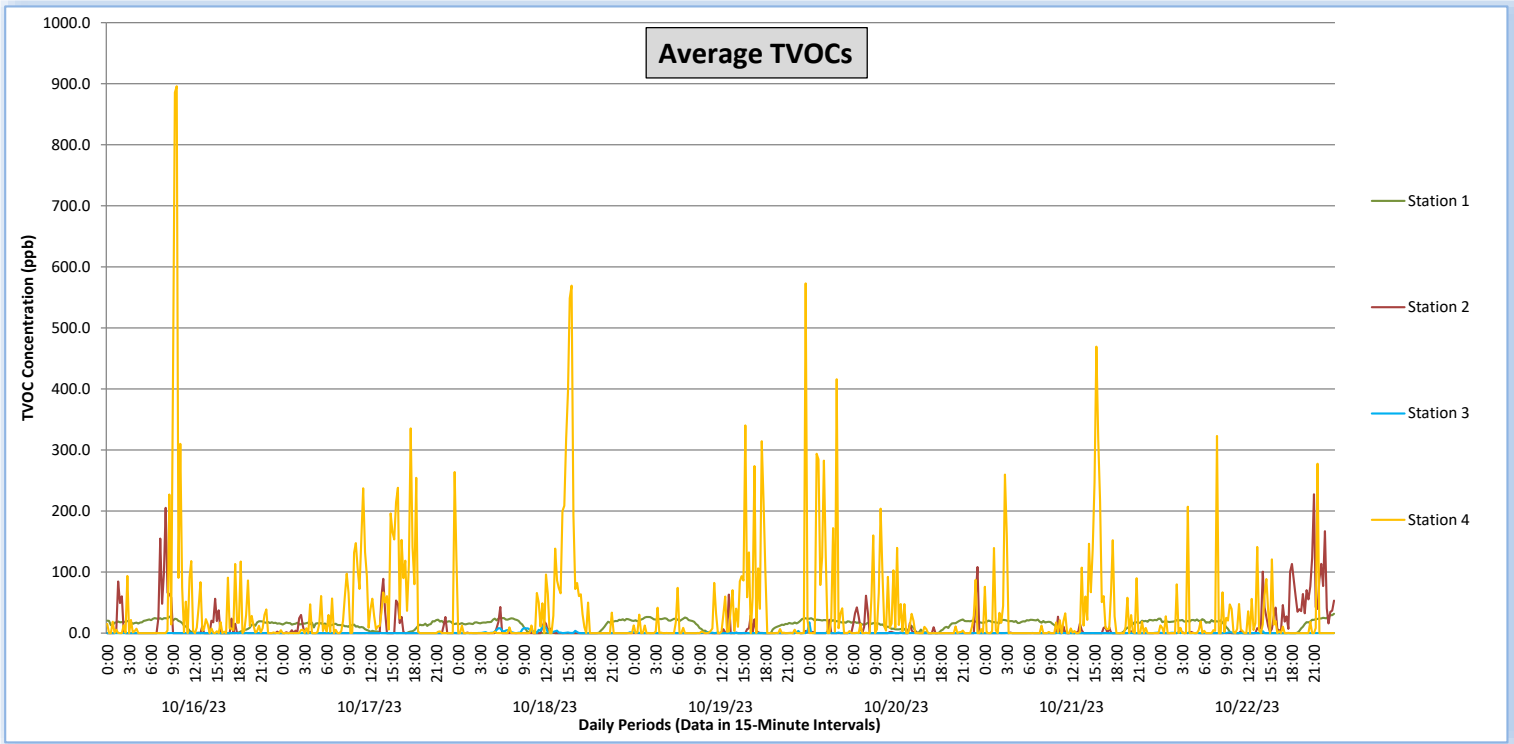


# Perimeter Air Monitoring Weekly Report

Real-Time Multigas Monitoring  
Bristol Landfill Air Investigation

October 16 - October 22, 2023



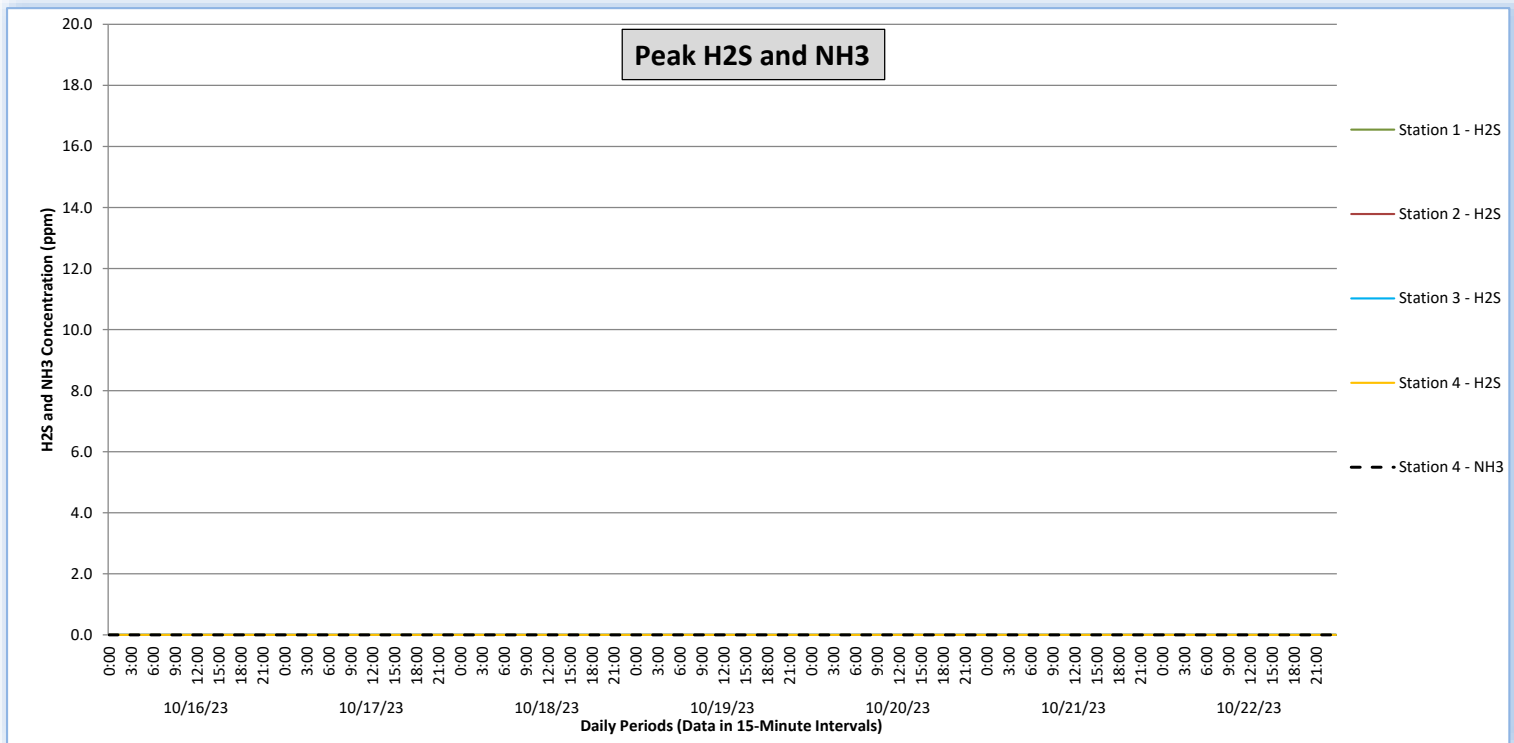
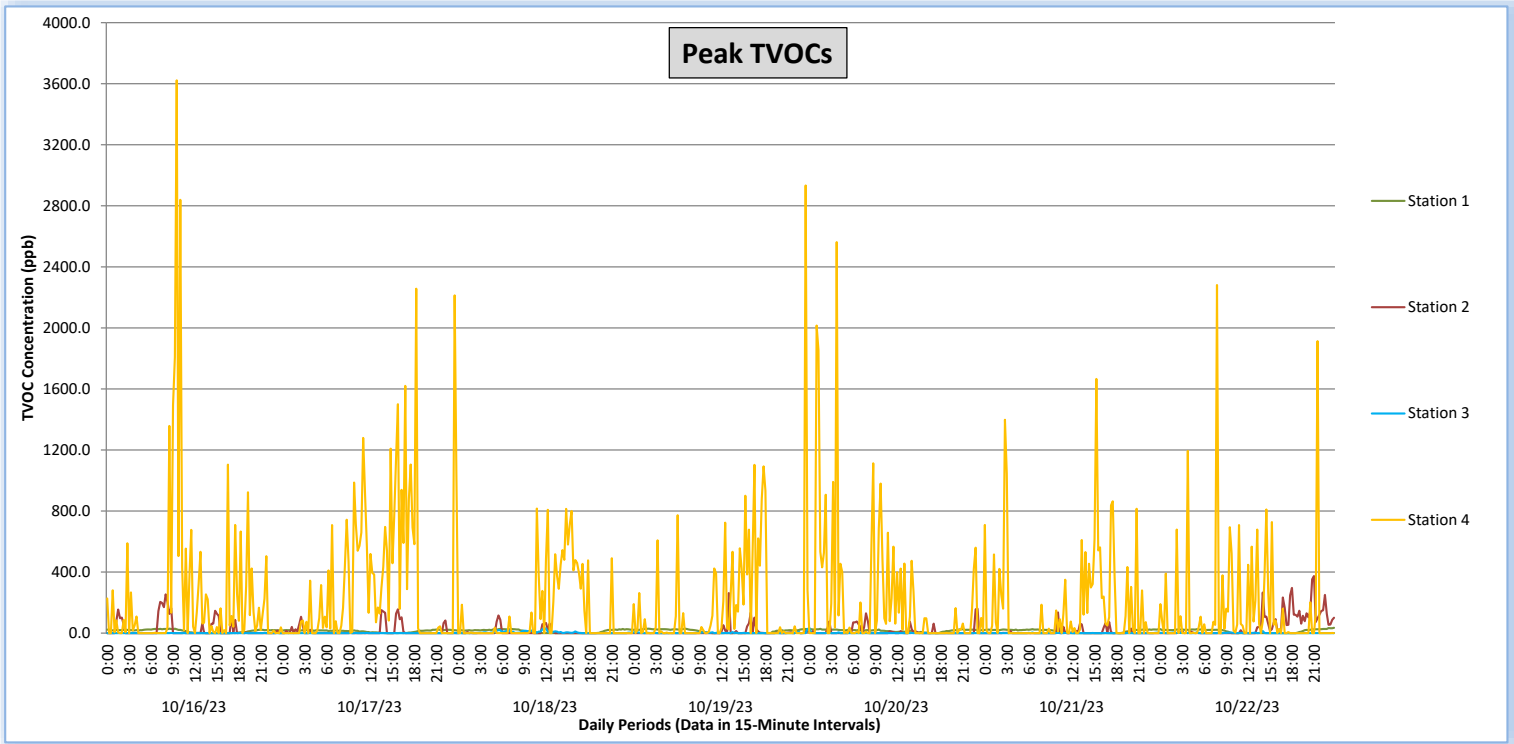
# Perimeter Air Monitoring Weekly Report



Real-Time Multigas Monitoring  
Bristol Landfill Air Investigation



October 16 - October 22, 2023





## Perimeter Air Monitoring Weekly Report

### Real-Time Multigas Monitoring Bristol Landfill Air Investigation



October 16 - October 22, 2023

Date	Daily Statistics	Station 1				Station 2				Station 3				Station 4					
		TVOCs		H2S		TVOCs		H2S		TVOCs		H2S		TVOCs		H2S		NH3	
		Average ppb	Peak ppb	Average ppm	Peak ppm	Average ppb	Peak ppb	Average ppm	Peak ppm	Average ppb	Peak ppb	Average ppm	Peak ppm	Average ppb	Peak ppb	Average ppm	Peak ppm	Average ppm	Peak ppm
		Values from 15-minute intervals	1-minute max within each 15-minute interval	Values from 15-minute intervals	1-minute max within each 15-minute interval	Values from 15-minute intervals	1-minute max within each 15-minute interval	Values from 15-minute intervals	1-minute max within each 15-minute interval	Values from 15-minute intervals	1-minute max within each 15-minute interval	Values from 15-minute intervals	1-minute max within each 15-minute interval	Values from 15-minute intervals	1-minute max within each 15-minute interval	Values from 15-minute intervals	1-minute max within each 15-minute interval	Values from 15-minute intervals	1-minute max within each 15-minute interval
October 16, 2023	Minimum	0	0	0.0	0.0	0	0	0.0	0.0	0	0	0.0	0.0	0	0	0.0	0.0	0	0
	Maximum	27	29	0.0	0.0	205	254	0.0	0.0	0	1	0.0	0.0	896	3,622	0.0	0.0	0	0
	Average	13	14	0.0	0.0	12	29	0.0	0.0	0	0	0.0	0.0	44	246	0.0	0.0	0	0
October 17, 2023	Minimum	0	0	0.0	0.0	0	0	0.0	0.0	0	0	0.0	0.0	0	0	0.0	0.0	0	0
	Maximum	22	24	0.0	0.0	89	156	0.0	0.0	0	2	0.0	0.0	335	2,257	0.0	0.0	0	0
	Average	11	13	0.0	0.0	5	15	0.0	0.0	0	0	0.0	0.0	49	333	0.0	0.0	0	0
October 18, 2023	Minimum	0	0	0.0	0.0	0	0	0.0	0.0	0	0	0.0	0.0	0	0	0.0	0.0	0	0
	Maximum	26	28	0.0	0.0	43	116	0.0	0.0	12	31	0.0	0.0	569	816	0.0	0.0	0	0
	Average	11	12	0.0	0.0	1	6	0.0	0.0	2	5	0.0	0.0	38	132	0.0	0.0	0	0
October 19, 2023	Minimum	0	0	0.0	0.0	0	0	0.0	0.0	0	0	0.0	0.0	0	0	0.0	0.0	0	0
	Maximum	26	29	0.0	0.0	63	263	0.0	0.0	4	26	0.0	0.0	573	2,933	0.0	0.0	0	0
	Average	12	14	0.0	0.0	2	8	0.0	0.0	0	1	0.0	0.0	32	182	0.0	0.0	0	0
October 20, 2023	Minimum	0	0	0.0	0.0	0	0	0.0	0.0	0	0	0.0	0.0	0	0	0.0	0.0	0	0
	Maximum	24	28	0.0	0.0	108	160	0.0	0.0	18	35	0.0	0.0	416	2,562	0.0	0.0	0	0
	Average	14	16	0.0	0.0	5	13	0.0	0.0	0	0	0.0	0.0	34	219	0.0	0.0	0	0
October 21, 2023	Minimum	0	0	0.0	0.0	0	0	0.0	0.0	0	0	0.0	0.0	0	0	0.0	0.0	0	0
	Maximum	24	26	0.0	0.0	27	136	0.0	0.0	1	4	0.0	0.0	469	1,666	0.0	0.0	0	0
	Average	12	13	0.0	0.0	1	6	0.0	0.0	0	0	0.0	0.0	34	171	0.0	0.0	0	0
October 22, 2023	Minimum	0	0	0.0	0.0	0	0	0.0	0.0	0	0	0.0	0.0	0	0	0.0	0.0	0	0
	Maximum	32	35	0.0	0.0	227	374	0.0	0.0	3	14	0.0	0.0	323	2,281	0.0	0.0	0	0
	Average	12	14	0.0	0.0	23	54	0.0	0.0	0	1	0.0	0.0	20	156	0.0	0.0	0	0

**Notes:**

- Dash/Blank data records indicate no data is available for that interval
- Calibration readings and data produced during sensor errors are excluded from the report

# Perimeter Air Monitoring Weekly Report



## Real-Time Multigas Monitoring Bristol Landfill Air Investigation



October 16 - October 22, 2023

Date	Daily Statistics	Bristol Met Station 1					Bristol Met Station 2				
		Wind Dir degrees	Wind Speed mph	Temp °F	RH %	Baro mbar	Wind Dir degrees	Wind Speed mph	Temp °F	RH %	Baro mbar
October 16, 2023	Minimum		0.2	40.8	63.9	941.6		0.1	41.2	64.1	944.8
	Maximum		3.3	52.5	86.9	946.5		3.9	51.3	82.4	949.8
	Average	355	1.2	47.1	78.7	943.3	299	1.7	47.1	76.6	946.5
October 17, 2023	Minimum		0.1	45.5	66.8	946.6		0.2	45.7	67.9	949.8
	Maximum		2.6	54.8	94.0	951.2		3.5	53.6	88.0	954.5
	Average	348	1.0	49.1	85.0	949.1	305	1.7	49.0	80.6	952.3
October 18, 2023	Minimum		0.1	39.8	43.8	949.3		0.2	40.8	46.1	952.5
	Maximum		2.7	67.8	95.6	952.7		4.6	66.0	88.0	956.0
	Average	301	1.0	52.8	72.9	951.0	341	1.3	52.5	71.6	954.3
October 19, 2023	Minimum		0.1	42.4	41.1	942.8		0.1	43.0	42.2	945.8
	Maximum		2.6	69.2	93.1	951.3		4.3	68.5	88.0	954.5
	Average	169	1.1	60.7	61.7	946.7	336	1.3	54.5	70.8	951.2
October 20, 2023	Minimum		0.1	50.0	68.4	934.5		0.1	50.4	65.0	937.5
	Maximum		3.8	58.8	95.4	942.6		6.8	58.9	89.1	945.7
	Average	313	1.2	53.0	84.0	937.7	305	2.7	52.9	81.2	940.8
October 21, 2023	Minimum		0.0	42.3	48.7	938.1		0.1	43.1	49.2	941.2
	Maximum		3.3	64.3	95.0	942.6		6.2	63.2	87.8	945.6
	Average	297	1.3	52.4	75.5	940.0	310	2.4	51.7	74.5	943.1
October 22, 2023	Minimum		0.1	41.3	48.0	940.4		0.1	41.7	50.0	943.5
	Maximum		3.2	64.4	92.0	951.8		5.7	62.3	89.0	954.8
	Average	9	1.1	51.6	73.4	946.2	298	1.8	50.4	73.4	949.2

**Notes:**

- Dash/Blank data records indicate no data is available for that interval
- Wind direction is a daily (24-hr) average value; with the origin of wind in degrees; clockwise from North calculated with vector averaging