

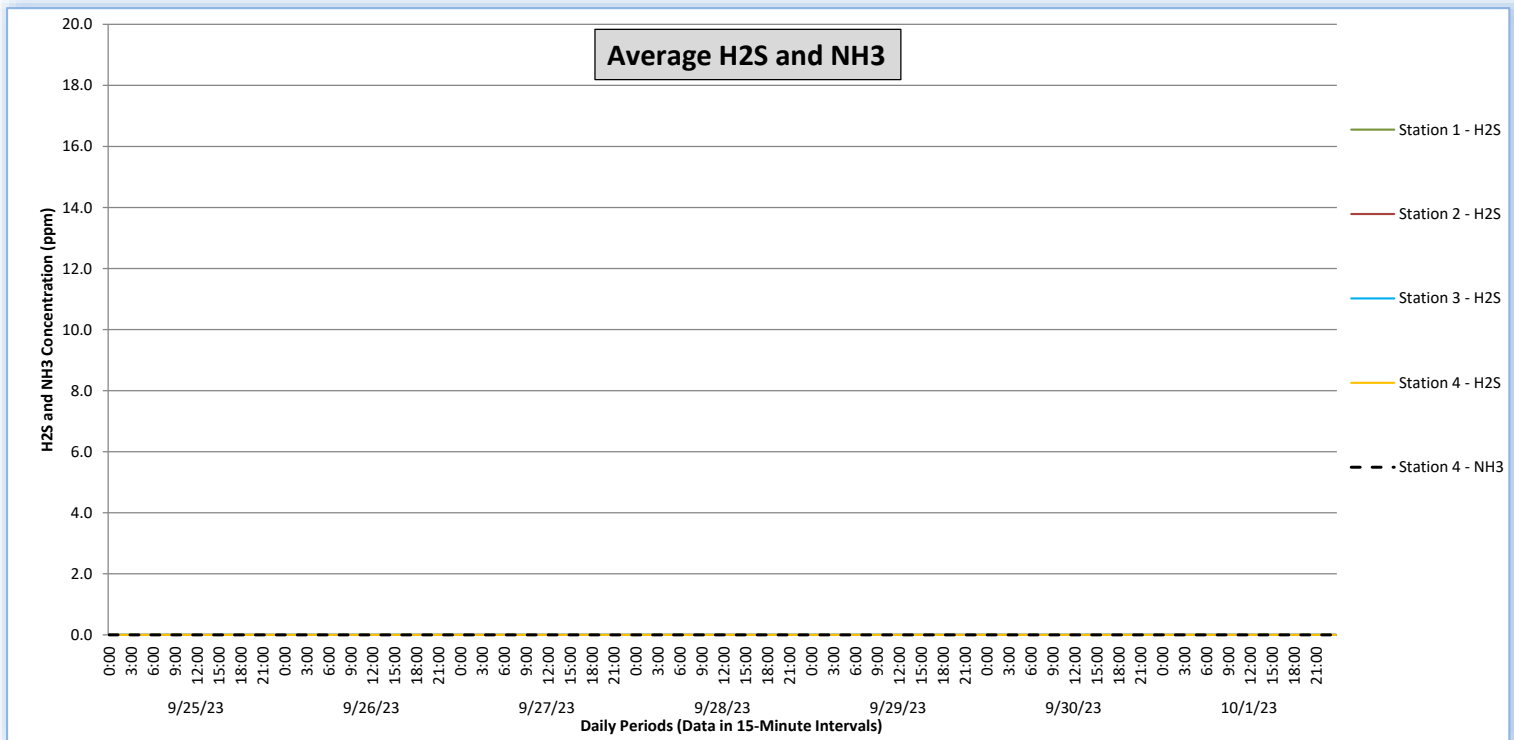
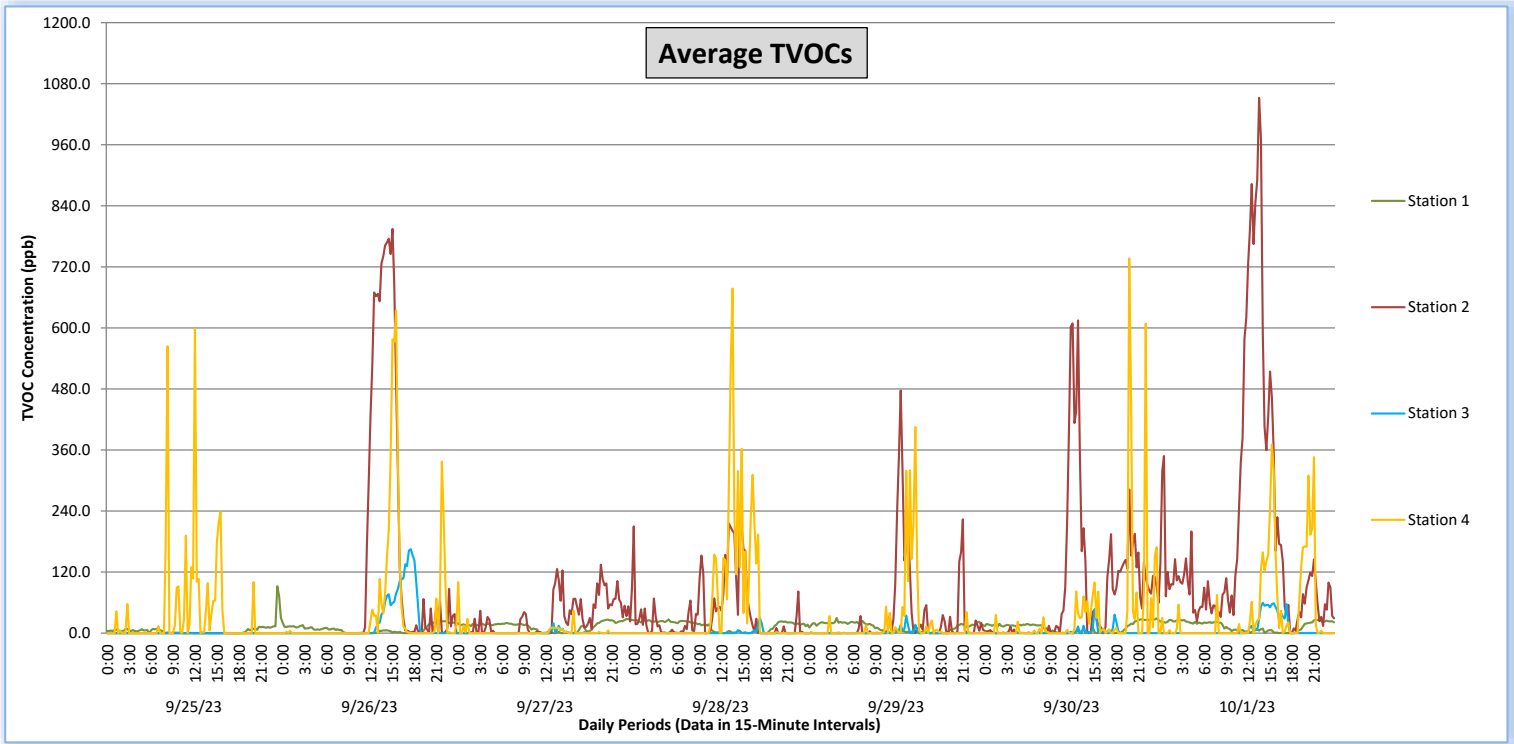
Perimeter Air Monitoring Weekly Report



Real-Time Multigas Monitoring
Bristol Landfill Air Investigation



September 25 - October 1, 2023



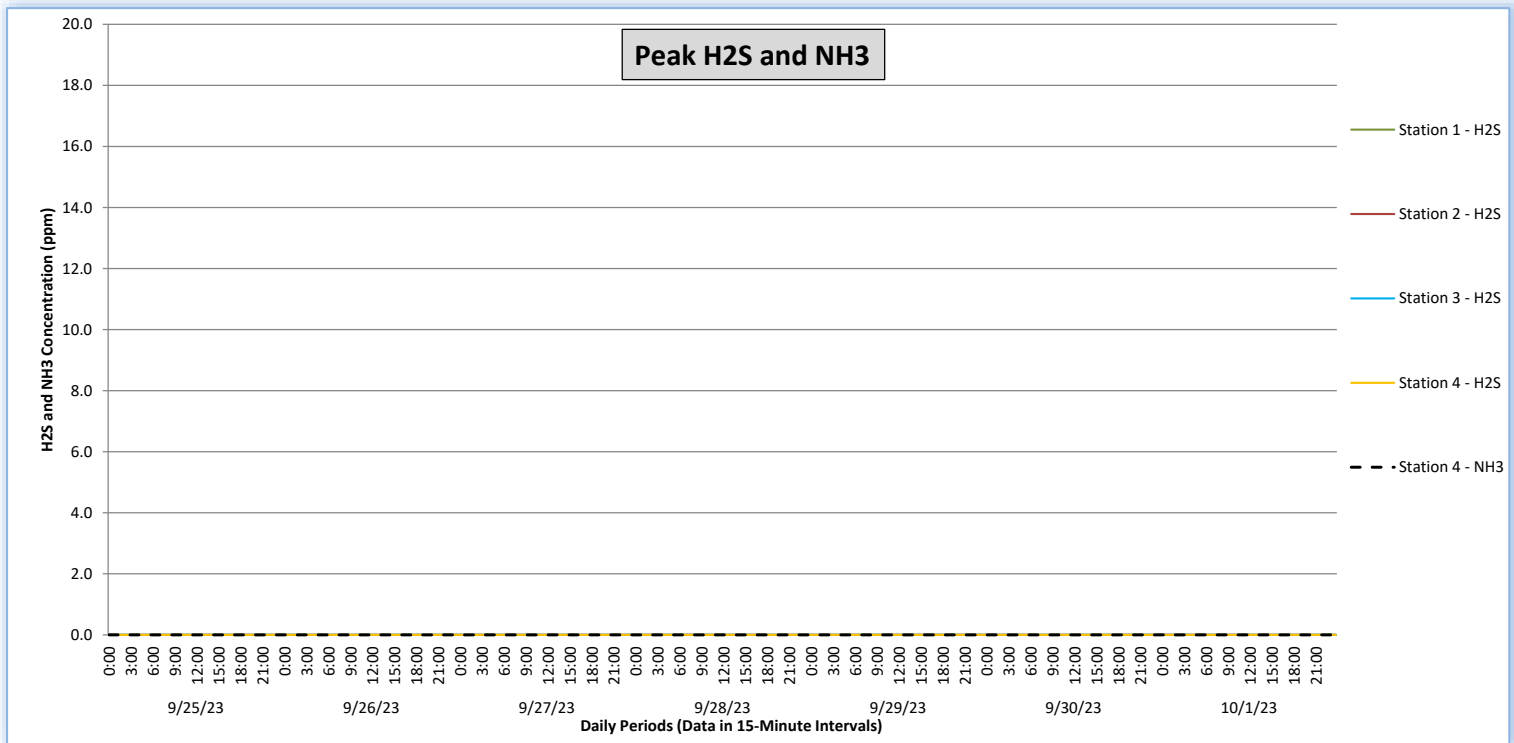
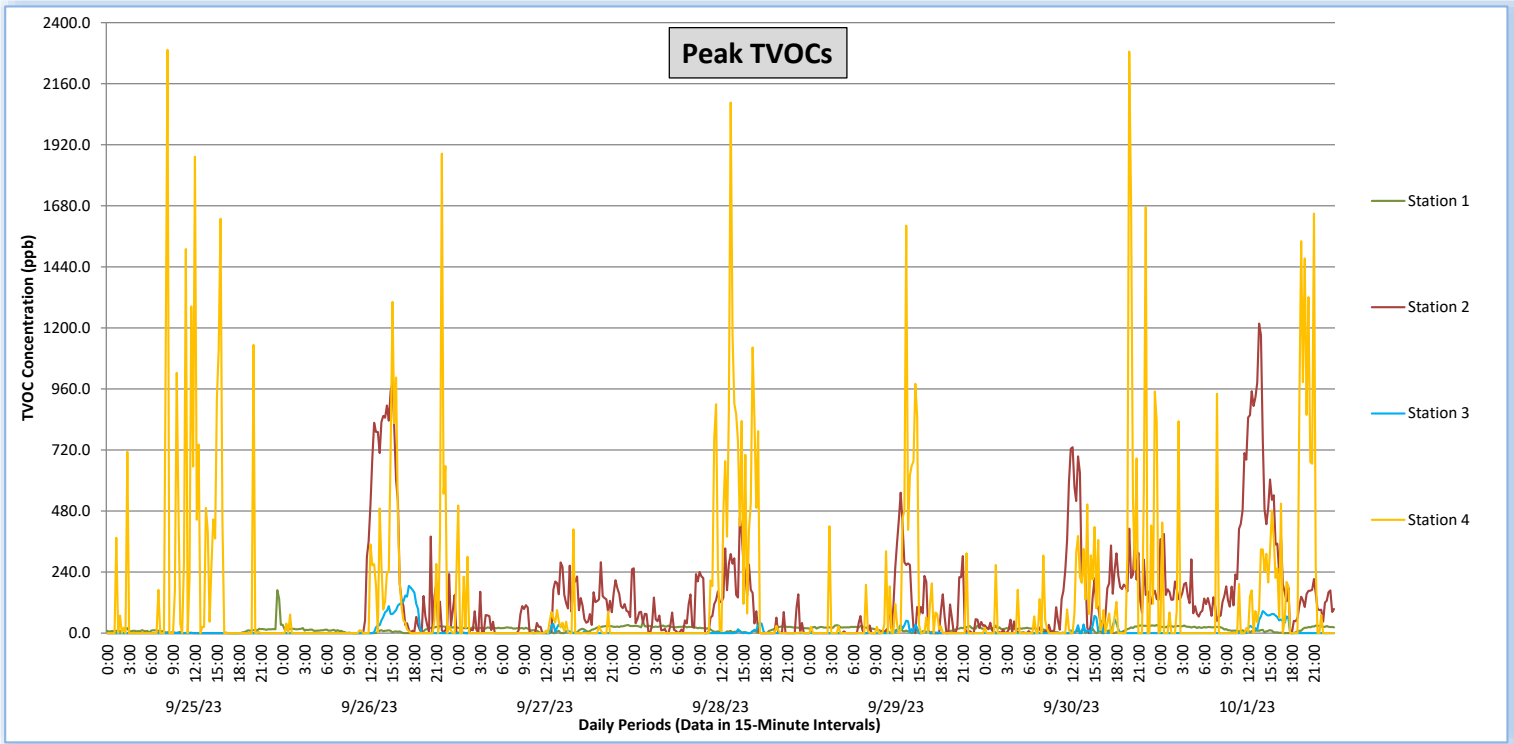
Perimeter Air Monitoring Weekly Report



Real-Time Multigas Monitoring
Bristol Landfill Air Investigation



September 25 - October 1, 2023





Perimeter Air Monitoring Weekly Report

Real-Time Multigas Monitoring
Bristol Landfill Air Investigation



September 25 - October 1, 2023

Date	Daily Statistics	Station 1				Station 2				Station 3				Station 4					
		TVOCs		H2S		TVOCs		H2S		TVOCs		H2S		TVOCs		H2S		NH3	
		Average ppb	Peak ppb	Average ppm	Peak ppm	Average ppb	Peak ppb	Average ppm	Peak ppm	Average ppb	Peak ppb	Average ppm	Peak ppm	Average ppb	Peak ppb	Average ppm	Peak ppm	Average ppm	Peak ppm
		Values from 15-minute intervals	1-minute max within each 15-minute interval	Values from 15-minute intervals	1-minute max within each 15-minute interval	Values from 15-minute intervals	1-minute max within each 15-minute interval	Values from 15-minute intervals	1-minute max within each 15-minute interval	Values from 15-minute intervals	1-minute max within each 15-minute interval	Values from 15-minute intervals	1-minute max within each 15-minute interval	Values from 15-minute intervals	1-minute max within each 15-minute interval	Values from 15-minute intervals	1-minute max within each 15-minute interval	Values from 15-minute intervals	1-minute max within each 15-minute interval
September 25, 2023	Minimum	0	0	0.0	0.0	0	0	0.0	0.0	0	0	0.0	0.0	0	0	0.0	0.0	0	0
	Maximum	92	169	0.0	0.0	0	0	0.0	0.0	0	0	0.0	0.0	599	2,293	0.0	0.0	0	0
	Average	6	9	0.0	0.0	0	0	0.0	0.0	0	0	0.0	0.0	36	216	0.0	0.0	0	0
September 26, 2023	Minimum	0	0	0.0	0.0	0	0	0.0	0.0	0	0	0.0	0.0	0	0	0.0	0.0	0	0
	Maximum	24	33	0.0	0.0	795	983	0.0	0.0	165	186	0.0	0.0	634	1,885	0.0	0.0	0	0
	Average	8	10	0.0	0.0	121	161	0.0	0.0	21	26	0.0	0.0	45	119	0.0	0.0	0	0
September 27, 2023	Minimum	0	0	0.0	0.0	0	0	0.0	0.0	0	0	0.0	0.0	0	0	0.0	0.0	0	0
	Maximum	28	32	0.0	0.0	135	279	0.0	0.0	19	37	0.0	0.0	100	502	0.0	0.0	0	0
	Average	14	16	0.0	0.0	31	77	0.0	0.0	1	2	0.0	0.0	3	22	0.0	0.0	0	0
September 28, 2023	Minimum	0	0	0.0	0.0	0	0	0.0	0.0	0	0	0.0	0.0	0	0	0.0	0.0	0	0
	Maximum	27	44	0.0	0.0	249	454	0.0	0.0	30	42	0.0	0.0	678	2,086	0.0	0.0	0	0
	Average	14	17	0.0	0.0	40	87	0.0	0.0	1	2	0.0	0.0	51	176	0.0	0.0	0	0
September 29, 2023	Minimum	0	0	0.0	0.0	0	0	0.0	0.0	0	0	0.0	0.0	0	0	0.0	0.0	0	0
	Maximum	30	31	0.0	0.0	477	552	0.0	0.0	35	49	0.0	0.0	405	1,602	0.0	0.0	0	0
	Average	11	15	0.0	0.0	33	63	0.0	0.0	1	3	0.0	0.0	21	94	0.0	0.0	0	0
September 30, 2023	Minimum	0	0	0.0	0.0	0	0	0.0	0.0	0	0	0.0	0.0	0	0	0.0	0.0	0	0
	Maximum	29	32	0.0	0.0	615	731	0.0	0.0	47	68	0.0	0.0	736	2,286	0.0	0.0	0	0
	Average	11	14	0.0	0.0	85	139	0.0	0.0	2	5	0.0	0.0	35	162	0.0	0.0	0	0
October 1, 2023	Minimum	0	0	0.0	0.0	0	2	0.0	0.0	0	0	0.0	0.0	0	0	0.0	0.0	0	0
	Maximum	26	30	0.0	0.0	1,052	1,217	0.0	0.0	60	87	0.0	0.0	371	1,649	0.0	0.0	0	0
	Average	14	17	0.0	0.0	194	267	0.0	0.0	8	13	0.0	0.0	43	184	0.0	0.0	0	0

Notes:

- Dash/Blank data records indicate no data is available for that interval
- Calibration readings and data produced during sensor errors are excluded from the report

Perimeter Air Monitoring Weekly Report



Real-Time Multigas Monitoring Bristol Landfill Air Investigation



September 25 - October 1, 2023

Date	Daily Statistics	Bristol Met Station 1					Bristol Met Station 2				
		Wind Dir degrees	Wind Speed mph	Temp °F	RH %	Baro mbar	Wind Dir degrees	Wind Speed mph	Temp °F	RH %	Baro mbar
September 25, 2023	Minimum		0.1	55.1	63.4	947.4		0.1	56.6	67.7	951.4
	Maximum		2.2	73.6	95.4	951.6		3.8	71.4	88.0	955.7
	Average	24	0.8	64.7	81.3	949.3	332	1.3	64.7	78.6	953.4
September 26, 2023	Minimum		0.1	54.7	41.0	950.2		0.1	55.4	44.9	954.2
	Maximum		2.5	84.3	95.6	953.2		3.8	81.7	88.8	957.3
	Average	111	1.0	67.7	74.3	951.7	73	1.1	67.3	72.7	955.8
September 27, 2023	Minimum		0.6	57.7	53.4	949.8		0.1	58.8	57.1	953.9
	Maximum		3.3	78.2	94.0	953.8		4.7	75.9	88.0	957.8
	Average	61	2.2	65.9	77.7	951.9	118	2.4	65.6	75.0	956.0
September 28, 2023	Minimum		0.1	53.6	53.0	949.3		0.2	54.7	57.8	953.3
	Maximum		3.0	78.2	93.0	953.7		3.5	75.5	86.0	957.7
	Average	34	1.3	63.7	79.9	951.1	117	1.4	63.6	76.8	955.1
September 29, 2023	Minimum		0.1	55.6	49.2	950.1		0.0	56.5	50.6	954.0
	Maximum		1.8	79.5	95.7	952.3		2.6	79.2	89.0	956.3
	Average	19	0.8	66.4	77.9	951.1	331	0.9	66.4	75.4	955.1
September 30, 2023	Minimum		0.1	53.8	42.5	951.6		0.1	54.6	45.9	955.5
	Maximum		2.3	81.8	96.0	954.5		3.4	79.9	89.0	958.3
	Average	77	0.7	66.0	75.5	953.1	305	1.1	66.0	73.2	957.1
October 1, 2023	Minimum		0.1	55.9	38.8	953.4		0.2	58.1	41.4	957.2
	Maximum		2.7	82.3	95.0	956.6		3.5	80.4	85.6	960.5
	Average	68	1.1	67.7	72.1	954.8	133	1.6	68.0	69.7	958.7

Notes:

- Dash/Blank data records indicate no data is available for that interval
- Wind direction is a daily (24-hr) average value; with the origin of wind in degrees; clockwise from North calculated with vector averaging