

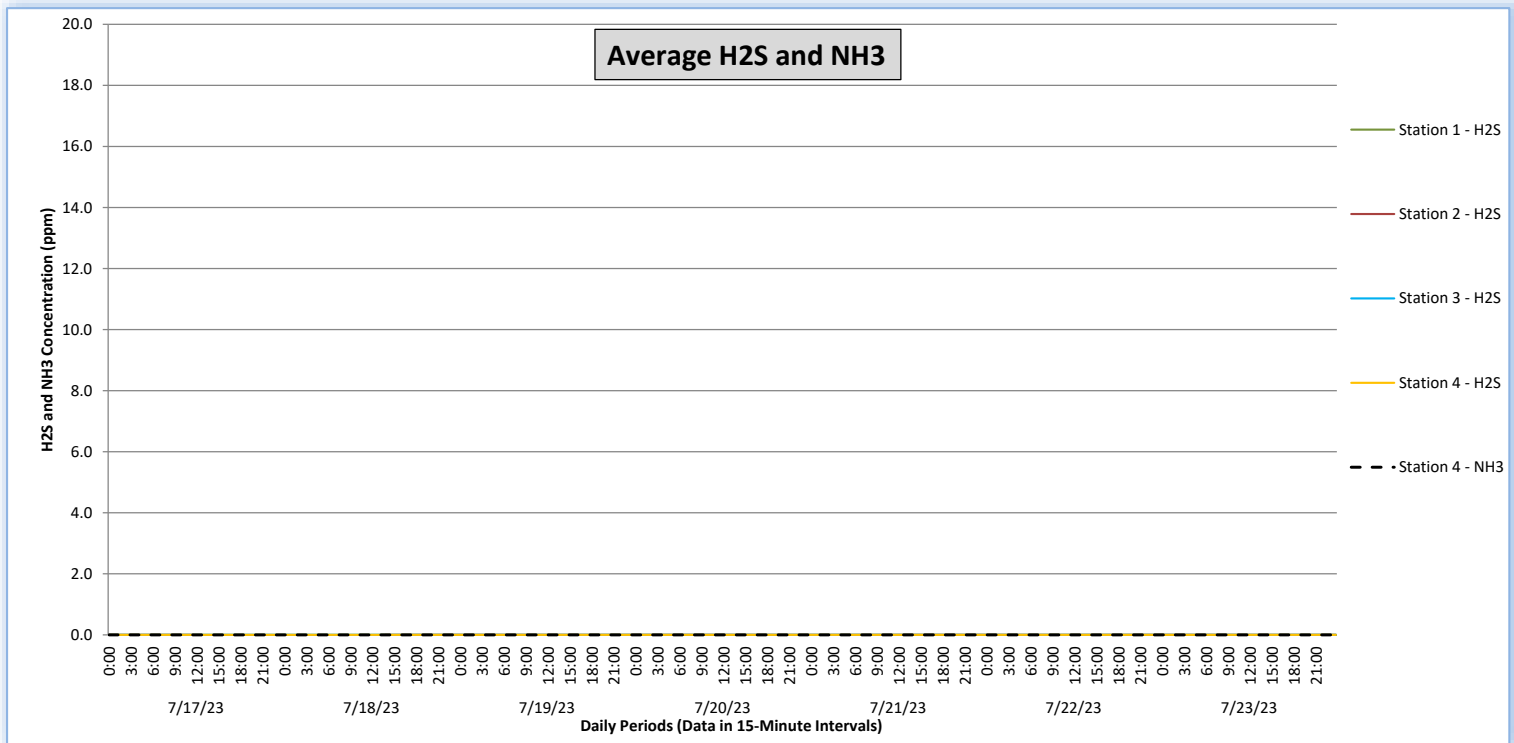
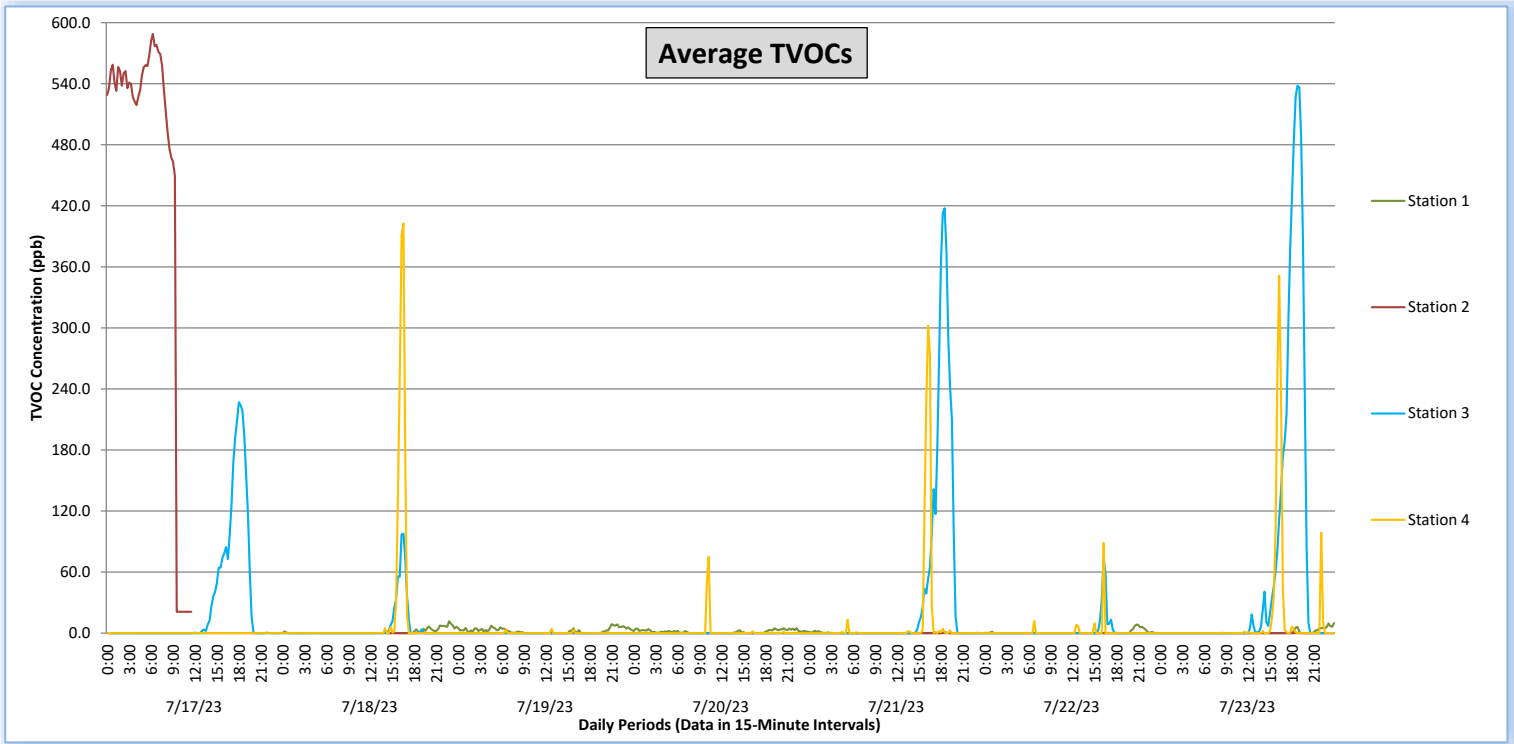
Perimeter Air Monitoring Weekly Report



Real-Time Multigas Monitoring
Bristol Landfill Air Investigation



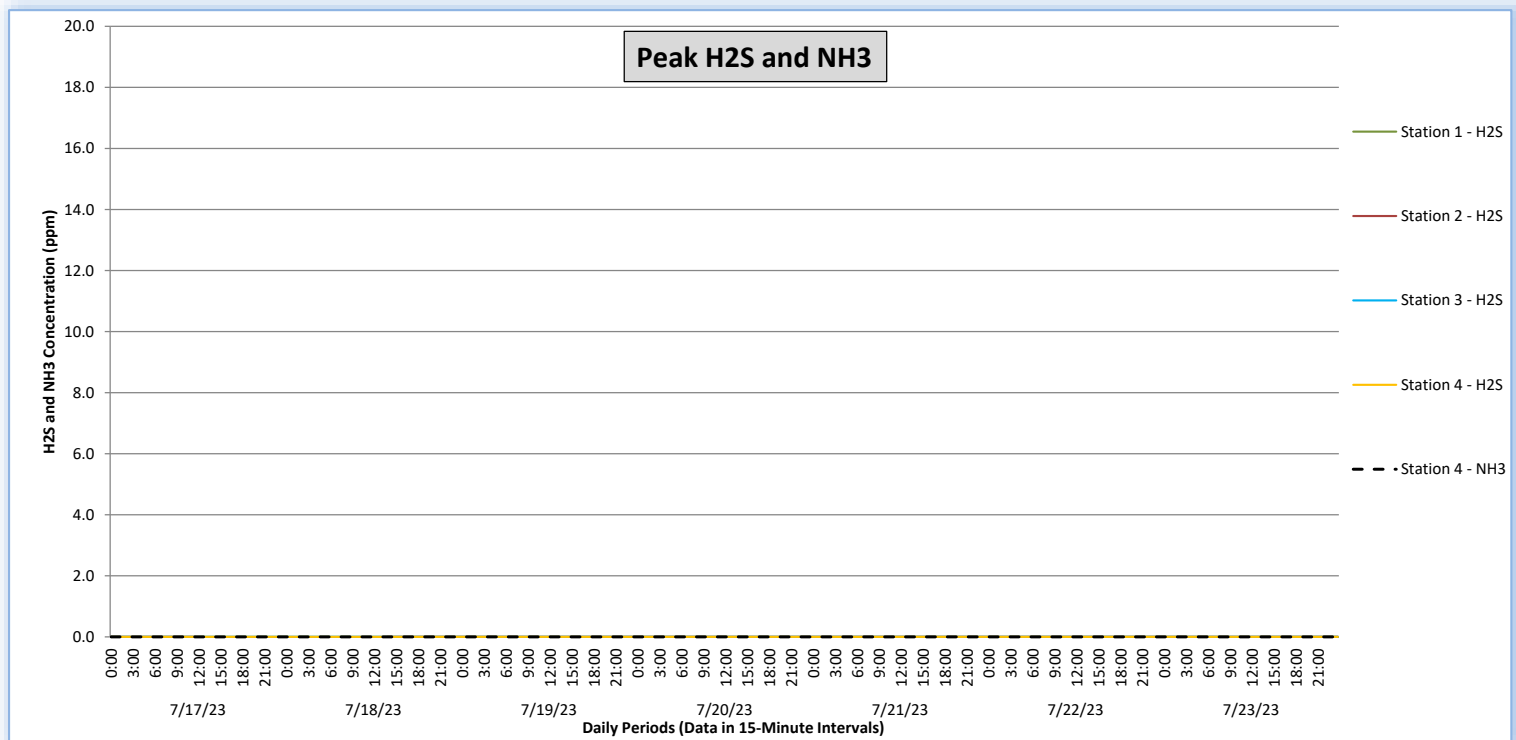
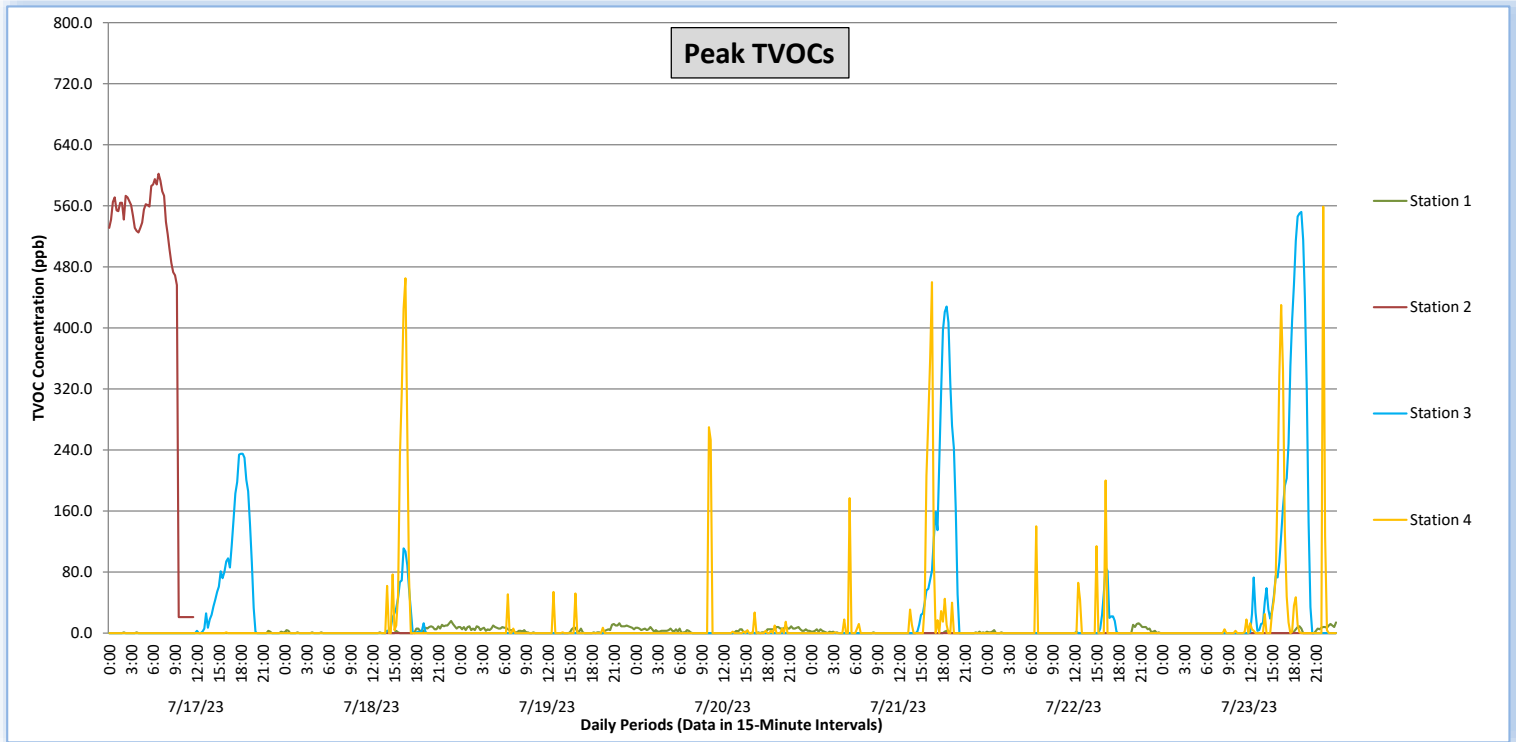
July 17 - July 23, 2023



Perimeter Air Monitoring Weekly Report

Real-Time Multigas Monitoring
Bristol Landfill Air Investigation

July 17 - July 23, 2023





Perimeter Air Monitoring Weekly Report

Real-Time Multigas Monitoring Bristol Landfill Air Investigation



July 17 - July 23, 2023

Date	Daily Statistics	Station 1				Station 2				Station 3				Station 4					
		TVOCs		H2S		TVOCs		H2S		TVOCs		H2S		TVOCs		H2S		NH3	
		Average ppb	Peak ppb	Average ppm	Peak ppm	Average ppb	Peak ppb	Average ppm	Peak ppm	Average ppb	Peak ppb	Average ppm	Peak ppm	Average ppb	Peak ppb	Average ppm	Peak ppm	Average ppm	Peak ppm
		Values from 15-minute intervals	1-minute max within each 15-minute interval	Values from 15-minute intervals	1-minute max within each 15-minute interval	Values from 15-minute intervals	1-minute max within each 15-minute interval	Values from 15-minute intervals	1-minute max within each 15-minute interval	Values from 15-minute intervals	1-minute max within each 15-minute interval	Values from 15-minute intervals	1-minute max within each 15-minute interval	Values from 15-minute intervals	1-minute max within each 15-minute interval	Values from 15-minute intervals	1-minute max within each 15-minute interval	Values from 15-minute intervals	1-minute max within each 15-minute interval
July 17, 2023	Minimum	0	0	0.0	0.0	21	21	0.0	0.0	0	0	0.0	0.0	0	0	0.0	0.0	0	0
	Maximum	0	3	0.0	0.0	589	602	0.0	0.0	227	235	0.0	0.0	0	1	0.0	0.0	0	0
	Average	0	0	0.0	0.0	431	439	0.0	0.0	27	32	0.0	0.0	0	0	0.0	0.0	0	0
July 18, 2023	Minimum	0	0	0.0	0.0	0	0	0.0	0.0	0	0	0.0	0.0	0	0	0.0	0.0	0	0
	Maximum	12	16	0.0	0.0	0	0	0.0	0.0	98	111	0.0	0.0	403	465	0.0	0.0	0	0
	Average	1	2	0.0	0.0	0	0	0.0	0.0	5	7	0.0	0.0	15	21	0.0	0.0	0	0
July 19, 2023	Minimum	0	0	0.0	0.0	0	0	0.0	0.0	0	0	0.0	0.0	0	0	0.0	0.0	0	0
	Maximum	9	13	0.0	0.0	0	0	0.0	0.0	0	0	0.0	0.0	4	54	0.0	0.0	0	0
	Average	2	4	0.0	0.0	0	0	0.0	0.0	0	0	0.0	0.0	0	2	0.0	0.0	0	0
July 20, 2023	Minimum	0	0	0.0	0.0	0	0	0.0	0.0	0	0	0.0	0.0	0	0	0.0	0.0	0	0
	Maximum	5	9	0.0	0.0	0	0	0.0	0.0	0	0	0.0	0.0	75	270	0.0	0.0	0	0
	Average	1	3	0.0	0.0	0	0	0.0	0.0	0	0	0.0	0.0	1	6	0.0	0.0	0	0
July 21, 2023	Minimum	0	0	0.0	0.0	0	0	0.0	0.0	0	0	0.0	0.0	0	0	0.0	0.0	0	0
	Maximum	2	5	0.0	0.0	0	0	0.0	0.0	418	428	0.0	0.0	302	460	0.0	0.0	0	0
	Average	0	0	0.0	0.0	0	0	0.0	0.0	36	42	0.0	0.0	10	19	0.0	0.0	0	0
July 22, 2023	Minimum	0	0	0.0	0.0	0	0	0.0	0.0	0	0	0.0	0.0	0	0	0.0	0.0	0	0
	Maximum	8	13	0.0	0.0	0	0	0.0	0.0	74	86	0.0	0.0	89	200	0.0	0.0	0	0
	Average	1	1	0.0	0.0	0	0	0.0	0.0	2	3	0.0	0.0	1	6	0.0	0.0	0	0
July 23, 2023	Minimum	0	0	0.0	0.0	0	0	0.0	0.0	0	0	0.0	0.0	0	0	0.0	0.0	0	0
	Maximum	10	14	0.0	0.0	0	0	0.0	0.0	538	552	0.0	0.0	351	559	0.0	0.0	0	0
	Average	1	1	0.0	0.0	0	0	0.0	0.0	58	67	0.0	0.0	12	26	0.0	0.0	0	0

Notes:

- Dash/Blank data records indicate no data is available for that interval
- Calibration readings and data produced during sensor errors are excluded from the report
- Station 2 TVOC monitoring results have a low level of confidence in the accuracy of the reported values from 22 June 2023 at 0300 until 18 July 2023 at 1316. A significant change in the instruments operation was observed beginning 22 June 2023 and inconsistent monitoring results were observed until a replacement TVOC monitor was placed in service 18 July 2023 at 1316.

Perimeter Air Monitoring Weekly Report



Real-Time Multigas Monitoring Bristol Landfill Air Investigation



July 17 - July 23, 2023

Date	Daily Statistics	Bristol Met Station 1					Bristol Met Station 2				
		Wind Dir degrees	Wind Speed mph	Temp °F	RH %	Baro mbar	Wind Dir degrees	Wind Speed mph	Temp °F	RH %	Baro mbar
July 17, 2023	Minimum		0.1	59.9	53.1	948.0		0.2	61.1	53.7	952.4
	Maximum		2.1	86.1	96.0	951.1		4.6	83.6	89.0	955.5
	Average	168	0.8	72.9	76.9	949.3	330	1.4	72.8	74.5	953.7
July 18, 2023	Minimum		0.1	65.5	55.3	948.1		0.2	66.6	57.9	952.5
	Maximum		4.3	86.5	94.3	951.9		6.1	85.1	87.5	956.3
	Average	148	0.9	74.8	76.4	950.0	322	1.5	74.6	74.6	954.4
July 19, 2023	Minimum		0.1	68.4	70.0	949.1		0.0	69.1	72.0	953.4
	Maximum		2.9	78.3	95.0	952.9		5.5	77.1	87.5	957.3
	Average	261	0.9	72.1	86.0	951.1	322	2.1	72.1	81.8	955.4
July 20, 2023	Minimum		0.1	64.1	69.9	945.3		0.2	65.2	72.1	949.6
	Maximum		2.3	80.2	95.5	952.4		5.7	78.0	88.7	956.7
	Average	275	0.9	71.4	85.0	949.6	323	2.1	71.3	81.3	953.9
July 21, 2023	Minimum		0.1	66.1	45.7	944.0		0.1	67.6	47.4	948.4
	Maximum		2.4	87.6	95.0	947.0		5.9	85.4	89.0	951.3
	Average	279	1.0	73.8	78.1	945.7	315	2.8	73.7	74.8	950.0
July 22, 2023	Minimum		0.0	65.1	52.8	943.4		0.0	66.5	56.1	947.7
	Maximum		3.5	82.4	91.0	946.1		4.0	79.0	84.0	950.5
	Average	149	0.8	71.7	77.9	944.8	98	1.0	71.6	75.2	949.2
July 23, 2023	Minimum		0.0	62.1	42.3	945.9		0.2	62.8	45.8	950.3
	Maximum		2.4	87.3	95.0	949.5		4.7	85.8	87.1	953.9
	Average	30	0.8	73.7	72.3	947.3	321	1.4	73.7	69.8	951.7

Notes:

- Dash/Blank data records indicate no data is available for that interval
- Wind direction is a daily (24-hr) average value; with the origin of wind in degrees; clockwise from North calculated with vector averaging