

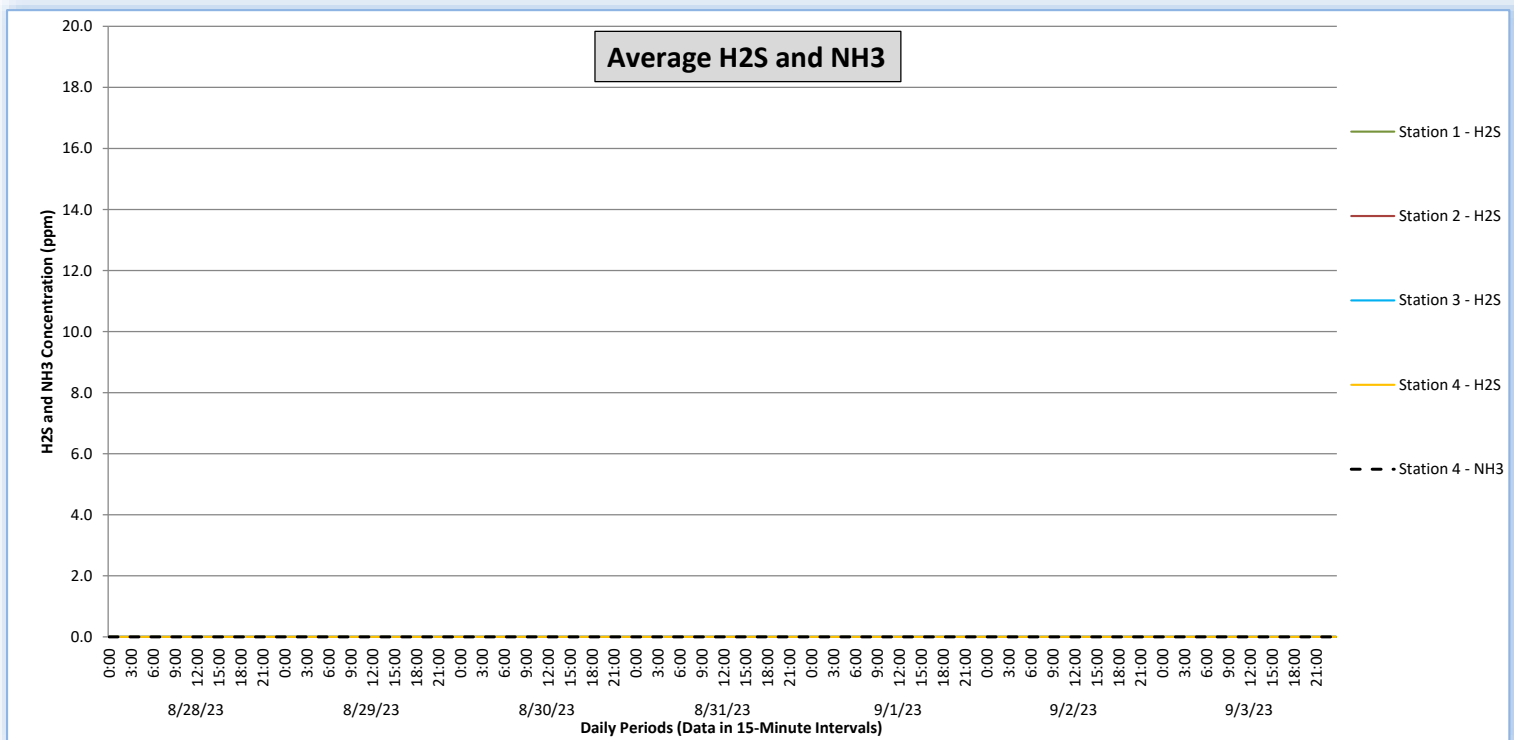
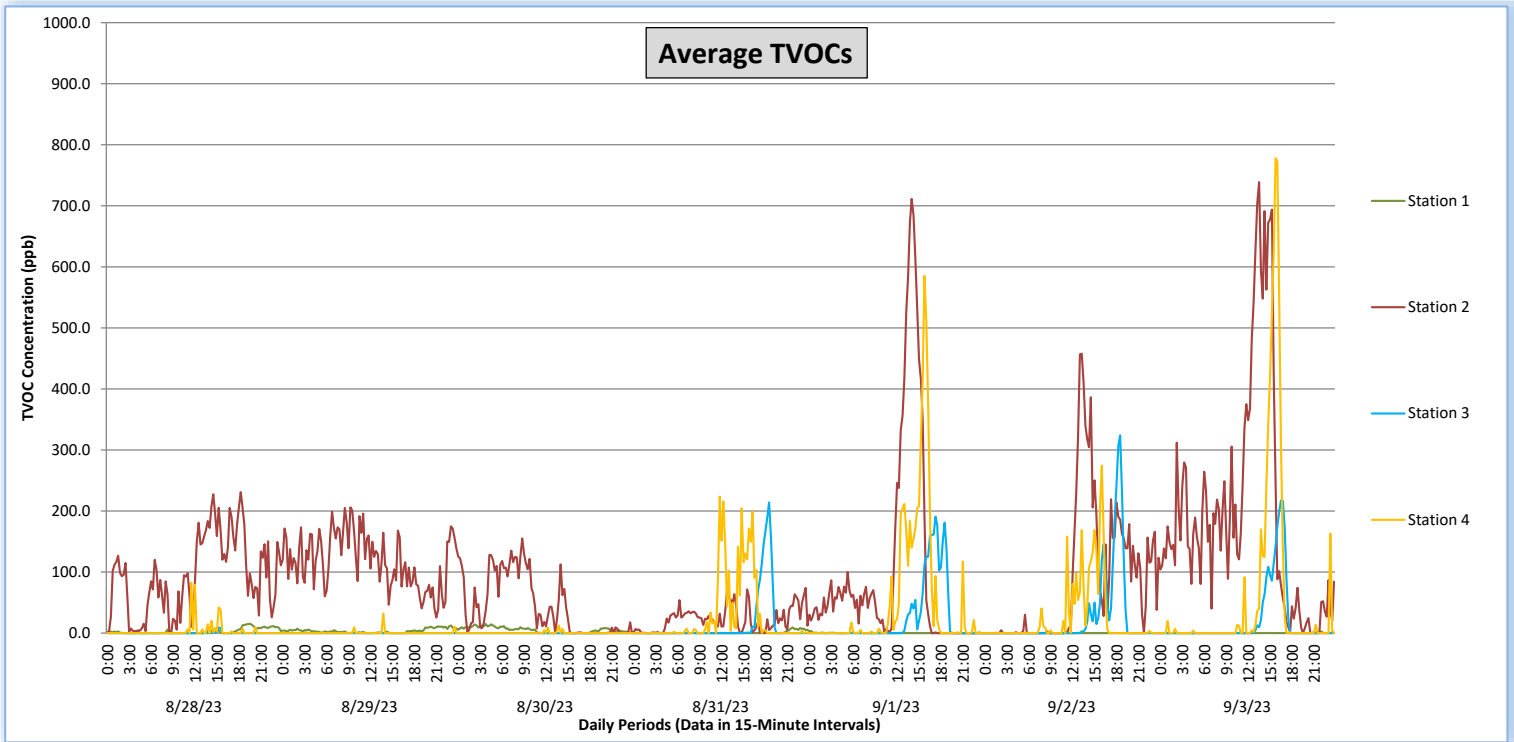


Perimeter Air Monitoring Weekly Report

Real-Time Multigas Monitoring
Bristol Landfill Air Investigation



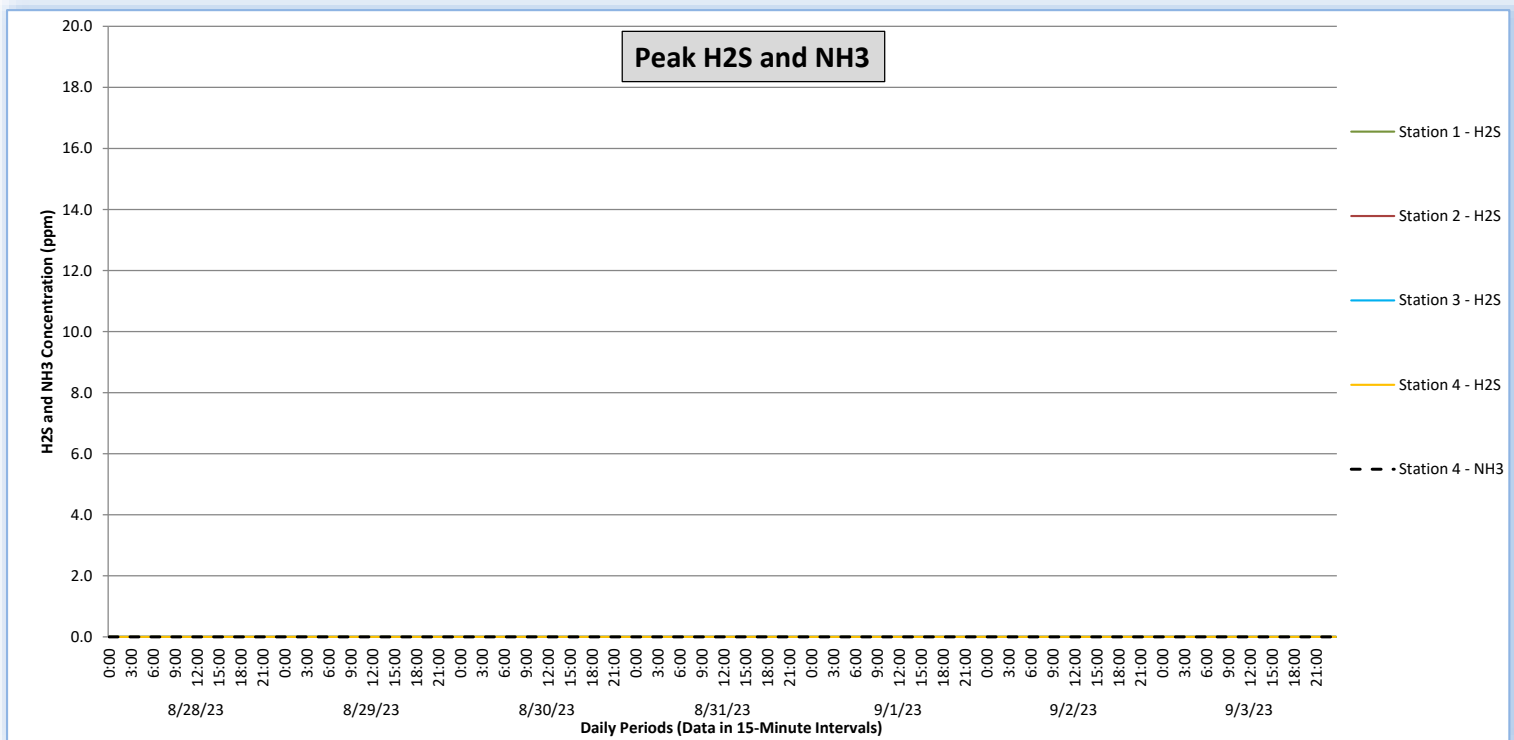
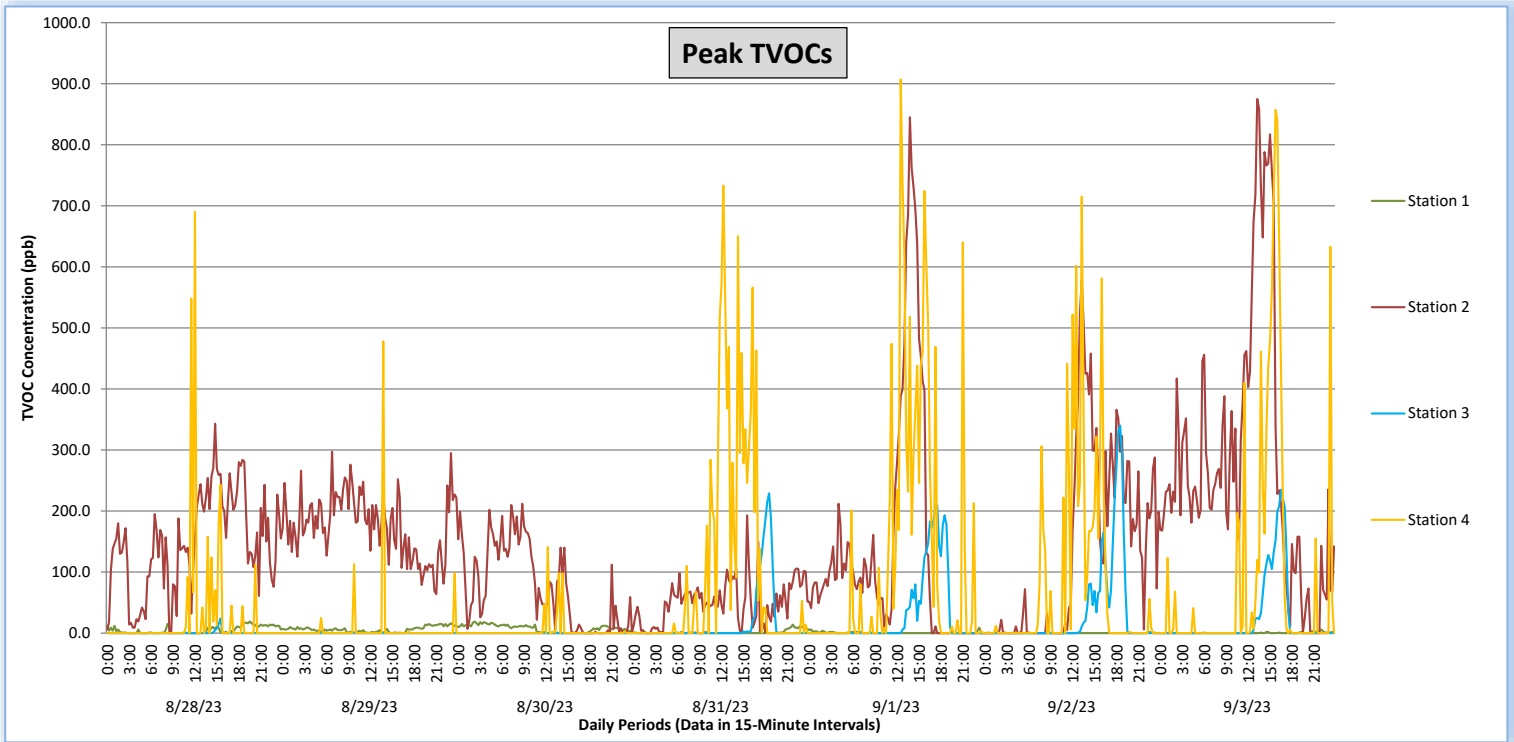
August 28 - September 3, 2023



Perimeter Air Monitoring Weekly Report

Real-Time Multigas Monitoring
Bristol Landfill Air Investigation

August 28 - September 3, 2023





Perimeter Air Monitoring Weekly Report

Real-Time Multigas Monitoring Bristol Landfill Air Investigation



August 28 - September 3, 2023

Date	Daily Statistics	Station 1				Station 2				Station 3				Station 4					
		TVOCs		H2S		TVOCs		H2S		TVOCs		H2S		TVOCs		H2S		NH3	
		Average ppb	Peak ppb	Average ppm	Peak ppm	Average ppb	Peak ppb	Average ppm	Peak ppm	Average ppb	Peak ppb	Average ppm	Peak ppm	Average ppb	Peak ppb	Average ppm	Peak ppm	Average ppm	Peak ppm
		Values from 15-minute intervals	1-minute max within each 15-minute interval	Values from 15-minute intervals	1-minute max within each 15-minute interval	Values from 15-minute intervals	1-minute max within each 15-minute interval	Values from 15-minute intervals	1-minute max within each 15-minute interval	Values from 15-minute intervals	1-minute max within each 15-minute interval	Values from 15-minute intervals	1-minute max within each 15-minute interval	Values from 15-minute intervals	1-minute max within each 15-minute interval	Values from 15-minute intervals	1-minute max within each 15-minute interval	Values from 15-minute intervals	1-minute max within each 15-minute interval
August 28, 2023	Minimum	0	0	0.0	0.0	0	0	0.0	0.0	0	0	0.0	0.0	0	0	0.0	0.0	0	0
	Maximum	15	19	0.0	0.0	231	343	0.0	0.0	9	24	0.0	0.0	83	690	0.0	0.0	0	0
	Average	3	5	0.0	0.0	94	147	0.0	0.0	0	1	0.0	0.0	3	26	0.0	0.0	0	0
August 29, 2023	Minimum	0	0	0.0	0.0	26	64	0.0	0.0	0	0	0.0	0.0	0	0	0.0	0.0	0	0
	Maximum	13	16	0.0	0.0	206	297	0.0	0.0	0	0	0.0	0.0	32	478	0.0	0.0	0	0
	Average	4	6	0.0	0.0	119	176	0.0	0.0	0	0	0.0	0.0	1	7	0.0	0.0	0	0
August 30, 2023	Minimum	0	0	0.0	0.0	0	0	0.0	0.0	0	0	0.0	0.0	0	0	0.0	0.0	0	0
	Maximum	15	19	0.0	0.0	155	212	0.0	0.0	0	1	0.0	0.0	13	141	0.0	0.0	0	0
	Average	5	8	0.0	0.0	45	74	0.0	0.0	0	0	0.0	0.0	0	4	0.0	0.0	0	0
August 31, 2023	Minimum	0	0	0.0	0.0	0	0	0.0	0.0	0	0	0.0	0.0	0	0	0.0	0.0	0	0
	Maximum	9	14	0.0	0.0	74	193	0.0	0.0	214	229	0.0	0.0	224	733	0.0	0.0	0	0
	Average	1	1	0.0	0.0	23	51	0.0	0.0	14	17	0.0	0.0	28	102	0.0	0.0	0	0
September 1, 2023	Minimum	0	0	0.0	0.0	0	0	0.0	0.0	0	0	0.0	0.0	0	0	0.0	0.0	0	0
	Maximum	4	9	0.0	0.0	711	845	0.0	0.0	191	210	0.0	0.0	585	907	0.0	0.0	0	0
	Average	0	1	0.0	0.0	102	139	0.0	0.0	24	30	0.0	0.0	52	119	0.0	0.0	0	0
September 2, 2023	Minimum	0	0	0.0	0.0	0	0	0.0	0.0	0	0	0.0	0.0	0	0	0.0	0.0	0	0
	Maximum	0	2	0.0	0.0	458	579	0.0	0.0	324	340	0.0	0.0	274	715	0.0	0.0	0	0
	Average	0	0	0.0	0.0	86	135	0.0	0.0	24	31	0.0	0.0	25	77	0.0	0.0	0	0
September 3, 2023	Minimum	0	0	0.0	0.0	0	0	0.0	0.0	0	0	0.0	0.0	0	0	0.0	0.0	0	0
	Maximum	3	6	0.0	0.0	739	875	0.0	0.0	218	235	0.0	0.0	778	857	0.0	0.0	0	0
	Average	0	0	0.0	0.0	194	276	0.0	0.0	20	23	0.0	0.0	58	90	0.0	0.0	0	0

Notes:

- Dash/Blank data records indicate no data is available for that interval
- Calibration readings and data produced during sensor errors are excluded from the report

Perimeter Air Monitoring Weekly Report



Real-Time Multigas Monitoring Bristol Landfill Air Investigation



August 28 - September 3, 2023

Date	Daily Statistics	Bristol Met Station 1					Bristol Met Station 2				
		Wind Dir degrees	Wind Speed mph	Temp °F	RH %	Baro mbar	Wind Dir degrees	Wind Speed mph	Temp °F	RH %	Baro mbar
August 28, 2023	Minimum		0.0	68.2	58.8	943.3		0.0	68.5	62.0	947.7
	Maximum		2.8	85.9	95.9	946.2		3.4	84.0	89.0	950.6
	Average	80	0.9	74.5	84.2	944.6	53	1.2	74.3	80.6	949.0
August 29, 2023	Minimum		0.1	67.5	64.4	942.7		0.2	68.2	65.9	947.1
	Maximum		1.7	82.7	96.0	946.6		3.0	81.0	88.3	951.0
	Average	167	0.7	73.0	86.5	944.7	9	1.0	73.2	81.7	949.0
August 30, 2023	Minimum		0.1	64.2	59.7	940.9		0.1	65.7	57.8	945.3
	Maximum		3.0	78.2	95.0	944.4		3.7	77.5	88.0	948.8
	Average	47	1.4	71.2	81.6	942.7	124	1.4	71.4	77.0	947.1
August 31, 2023	Minimum		0.2	57.3	56.4	942.8		0.0	58.4	57.7	947.2
	Maximum		2.2	77.5	95.0	951.0		2.0	76.8	87.5	955.3
	Average	29	1.1	65.9	79.7	946.5	340	0.9	66.0	76.1	950.9
September 1, 2023	Minimum		0.1	58.2	45.9	951.1		0.1	60.3	48.2	955.4
	Maximum		2.8	84.8	92.2	955.7		3.7	83.3	85.0	960.0
	Average	62	1.2	70.1	72.9	953.9	122	1.6	70.4	69.9	958.2
September 2, 2023	Minimum		0.1	58.4	45.8	952.3		0.1	59.3	49.1	956.6
	Maximum		2.3	87.4	93.4	956.4		2.9	83.8	86.9	960.7
	Average	138	0.7	70.8	74.9	954.4	116	1.1	71.0	72.2	958.8
September 3, 2023	Minimum		0.1	58.0	45.0	949.8		0.1	59.2	50.3	954.1
	Maximum		3.0	88.5	96.0	954.2		3.2	87.3	89.0	958.6
	Average	143	0.8	71.4	77.7	952.0	343	1.0	71.6	75.4	956.3

Notes:

- Dash/Blank data records indicate no data is available for that interval
- Wind direction is a daily (24-hr) average value; with the origin of wind in degrees; clockwise from North calculated with vector averaging