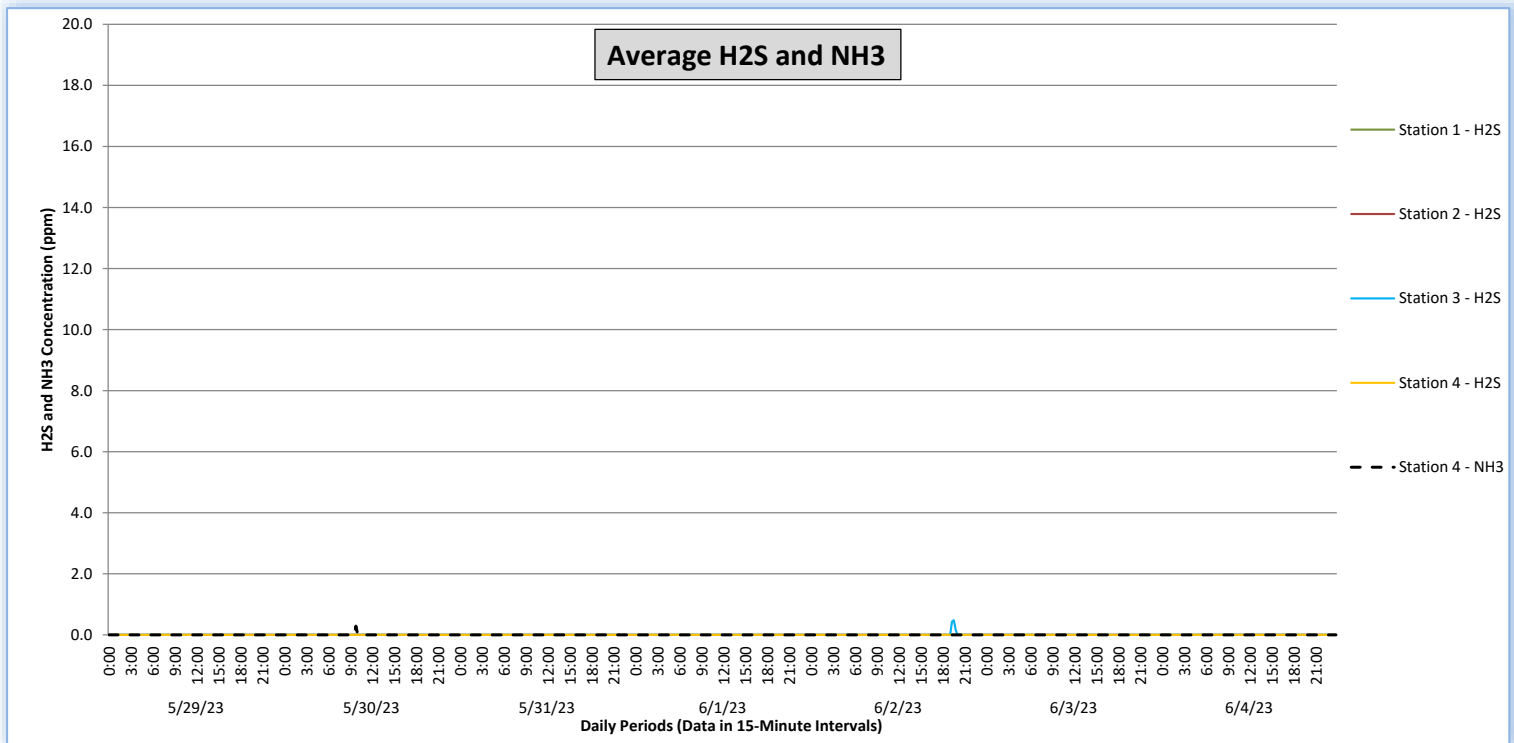
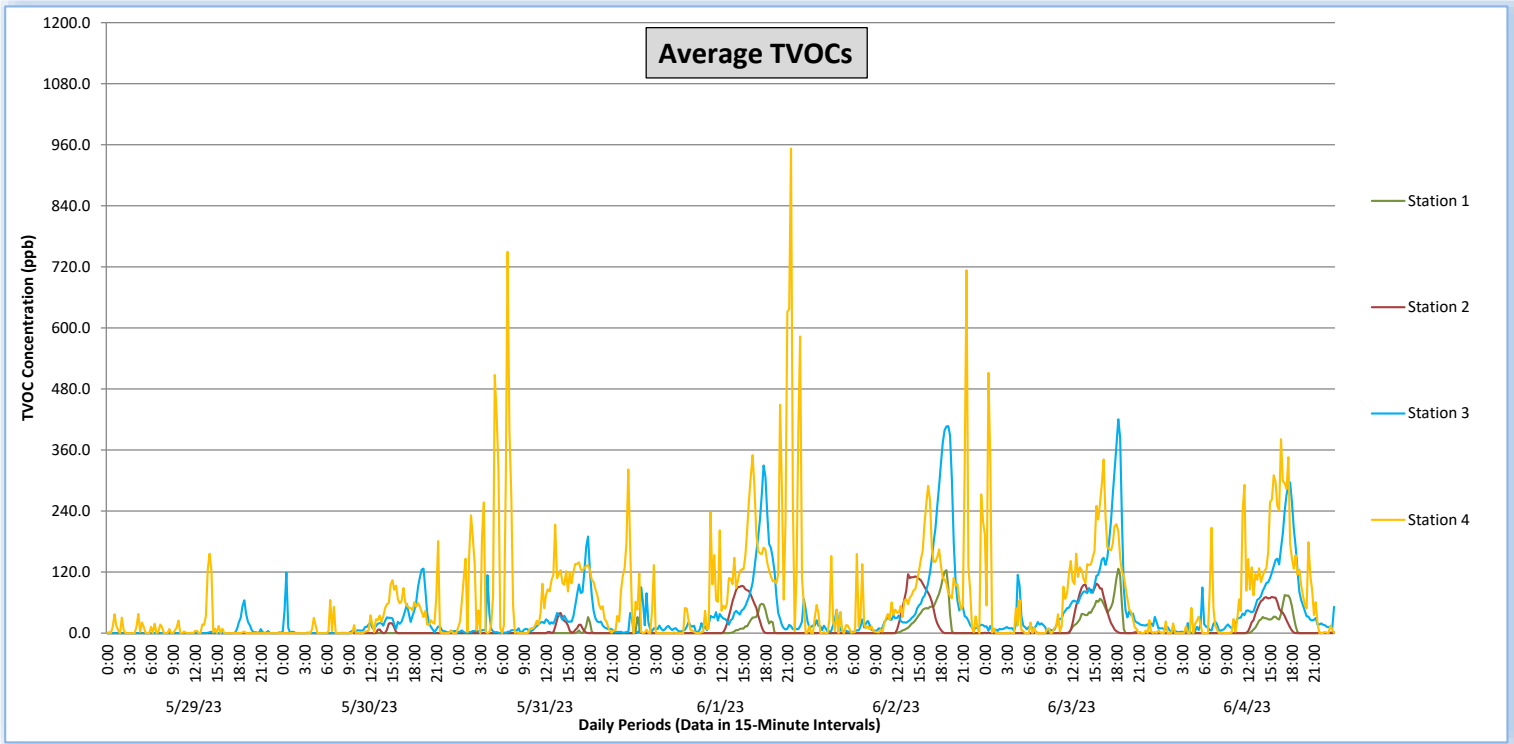


Perimeter Air Monitoring Weekly Report

Real-Time Multigas Monitoring
Bristol Landfill Air Investigation

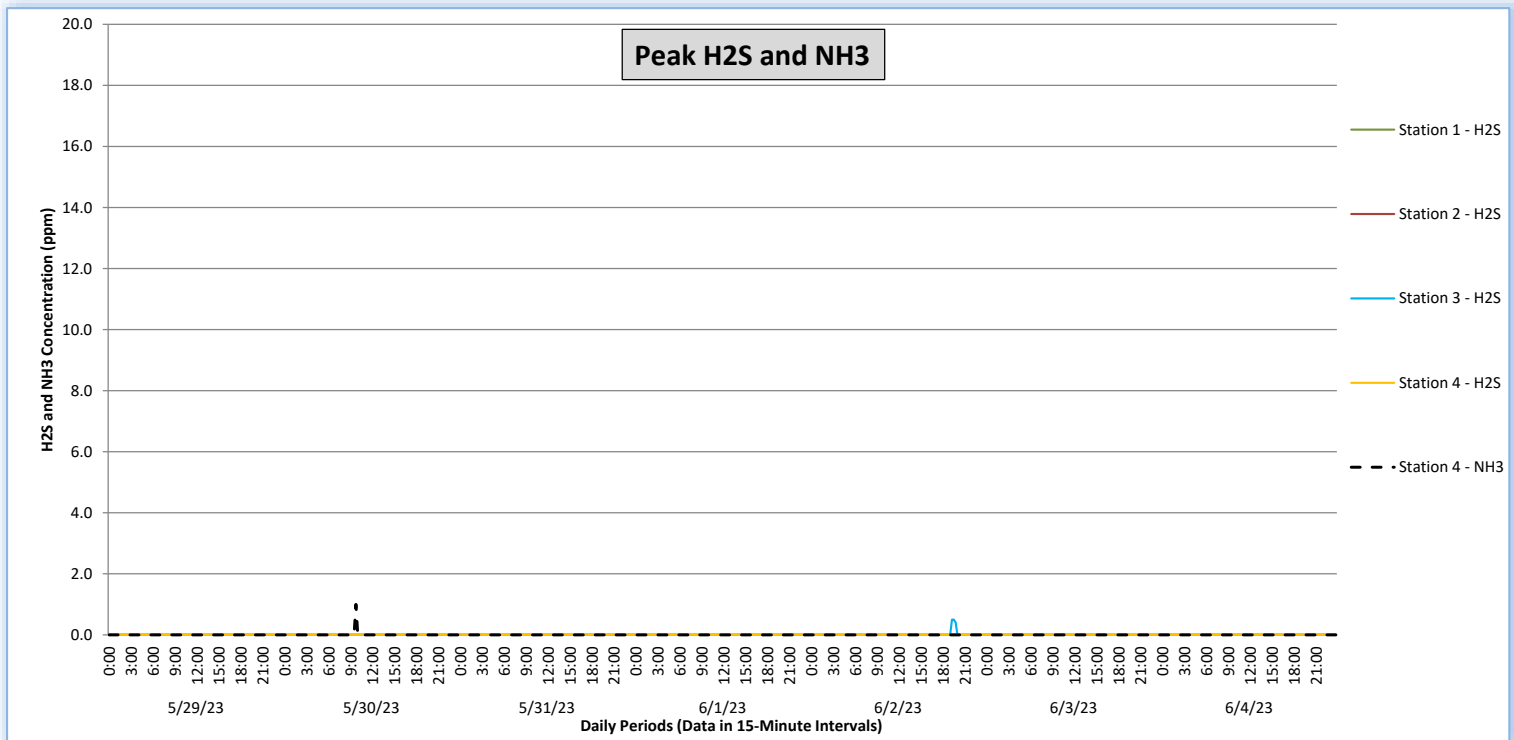
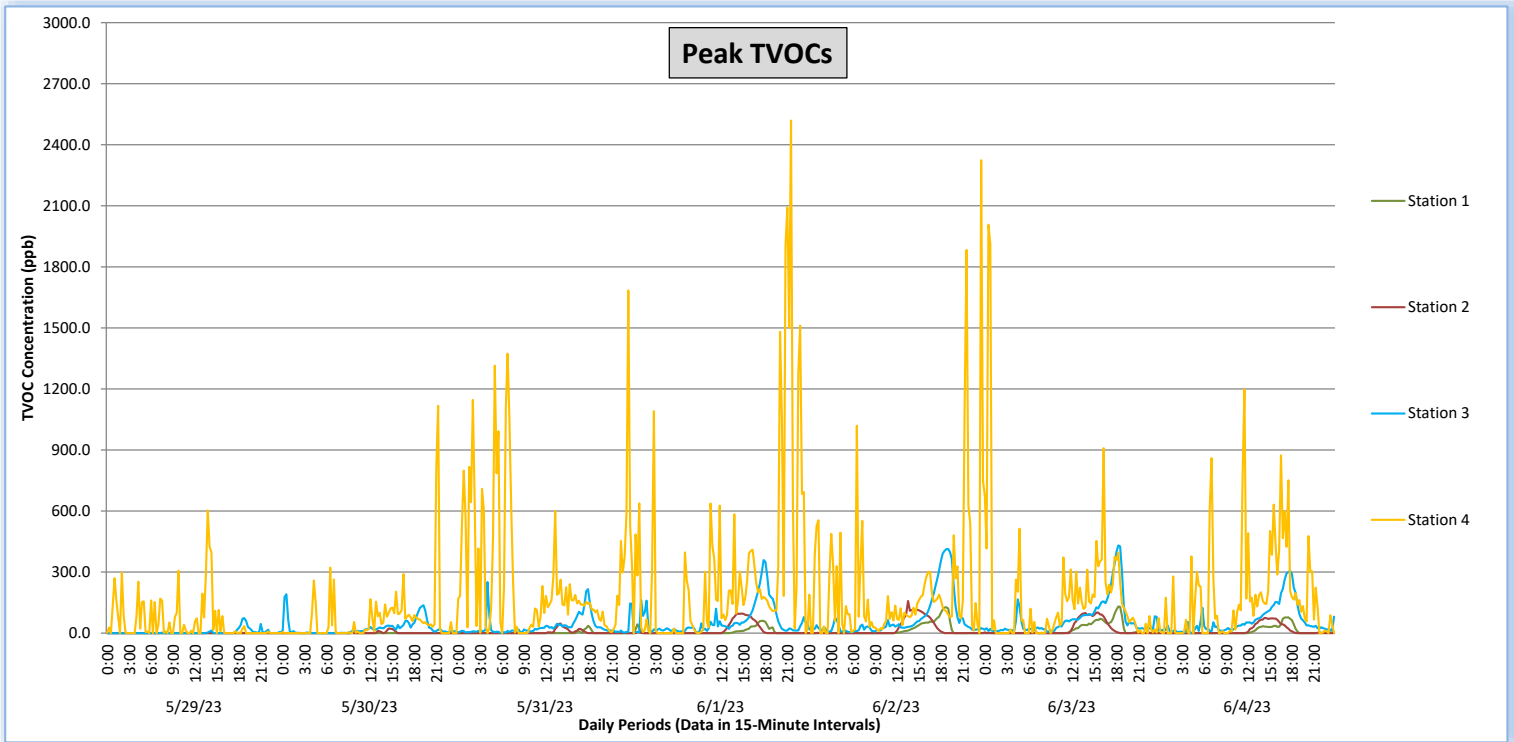
May 29 - June 4, 2023



Perimeter Air Monitoring Weekly Report

Real-Time Multigas Monitoring
Bristol Landfill Air Investigation

May 29 - June 4, 2023





Perimeter Air Monitoring Weekly Report

Real-Time Multigas Monitoring Bristol Landfill Air Investigation



May 29 - June 4, 2023

Date	Daily Statistics	Station 1				Station 2				Station 3				Station 4					
		TVOCs		H2S		TVOCs		H2S		TVOCs		H2S		TVOCs		H2S		NH3	
		Average ppb	Peak ppb	Average ppm	Peak ppm	Average ppb	Peak ppb	Average ppm	Peak ppm	Average ppb	Peak ppb	Average ppm	Peak ppm	Average ppb	Peak ppb	Average ppm	Peak ppm	Average ppm	Peak ppm
		Values from 15-minute intervals	1-minute max within each 15-minute interval	Values from 15-minute intervals	1-minute max within each 15-minute interval	Values from 15-minute intervals	1-minute max within each 15-minute interval	Values from 15-minute intervals	1-minute max within each 15-minute interval	Values from 15-minute intervals	1-minute max within each 15-minute interval	Values from 15-minute intervals	1-minute max within each 15-minute interval	Values from 15-minute intervals	1-minute max within each 15-minute interval	Values from 15-minute intervals	1-minute max within each 15-minute interval	Values from 15-minute intervals	1-minute max within each 15-minute interval
May 29, 2023	Minimum	0	0	0.0	0.0	0	0	0.0	0.0	0	0	0.0	0.0	0	0	0.0	0.0	0	0
	Maximum	0	0	0.0	0.0	0	0	0.0	0.0	65	74	0.0	0.0	156	603	0.0	0.0	0	0
	Average	0	0	0.0	0.0	0	0	0.0	0.0	3	5	0.0	0.0	9	58	0.0	0.0	0	0
May 30, 2023	Minimum	0	0	0.0	0.0	0	0	0.0	0.0	0	0	0.0	0.0	0	0	0.0	0.0	0	0
	Maximum	0	0	0.0	0.0	20	23	0.0	0.0	127	191	0.0	0.0	181	1,117	0.0	0.0	0	1
	Average	0	0	0.0	0.0	1	1	0.0	0.0	17	25	0.0	0.0	23	68	0.0	0.0	0	0
May 31, 2023	Minimum	0	0	0.0	0.0	0	0	0.0	0.0	0	1	0.0	0.0	0	0	0.0	0.0	0	0
	Maximum	32	36	0.0	0.0	40	47	0.0	0.0	190	251	0.0	0.0	750	1,684	0.0	0.0	0	0
	Average	1	1	0.0	0.0	3	4	0.0	0.0	23	34	0.0	0.0	100	277	0.0	0.0	0	0
June 1, 2023	Minimum	0	0	0.0	0.0	0	0	0.0	0.0	0	1	0.0	0.0	0	0	0.0	0.0	0	0
	Maximum	58	60	0.0	0.0	93	96	0.0	0.0	330	359	0.0	0.0	952	2,519	0.0	0.0	0	0
	Average	6	8	0.0	0.0	13	15	0.0	0.0	46	60	0.0	0.0	112	304	0.0	0.0	0	0
June 2, 2023	Minimum	0	0	0.0	0.0	0	0	0.0	0.0	2	5	0.0	0.0	0	0	0.0	0.0	0	0
	Maximum	124	127	0.0	0.0	116	158	0.0	0.0	407	413	0.5	0.5	713	2,324	0.0	0.0	0	0
	Average	14	16	0.0	0.0	18	20	0.0	0.0	62	73	0.0	0.0	74	214	0.0	0.0	0	0
June 3, 2023	Minimum	0	0	0.0	0.0	0	0	0.0	0.0	3	6	0.0	0.0	0	0	0.0	0.0	0	0
	Maximum	127	131	0.0	0.0	97	101	0.0	0.0	420	431	0.0	0.0	512	2,007	0.0	0.0	0	0
	Average	16	18	0.0	0.0	17	18	0.0	0.0	60	72	0.0	0.0	74	170	0.0	0.0	0	0
June 4, 2023	Minimum	0	0	0.0	0.0	0	0	0.0	0.0	1	2	0.0	0.0	0	0	0.0	0.0	0	0
	Maximum	75	78	0.0	0.0	71	75	0.0	0.0	296	306	0.0	0.0	381	1,198	0.0	0.0	0	0
	Average	9	11	0.0	0.0	12	13	0.0	0.0	53	63	0.0	0.0	79	182	0.0	0.0	0	0

Notes:

- Dash/Blank data records indicate no data is available for that interval
- Calibration readings and data produced during sensor errors are excluded from the report

Perimeter Air Monitoring Weekly Report



Real-Time Multigas Monitoring Bristol Landfill Air Investigation



May 29 - June 4, 2023

Date	Daily Statistics	Bristol Met Station 1					Bristol Met Station 2				
		Wind Dir degrees	Wind Speed mph	Temp °F	RH %	Baro mbar	Wind Dir degrees	Wind Speed mph	Temp °F	RH %	Baro mbar
May 29, 2023	Minimum		0.1	52.7	68.9	944.7		0.1	52.9	66.0	949.0
	Maximum		2.1	71.1	96.3	947.4		3.8	70.1	89.0	951.7
	Average	52	0.8	58.0	90.3	945.8	331	1.7	58.1	83.2	950.1
May 30, 2023	Minimum		0.3	55.4	52.7	946.1		0.2	56.5	52.5	950.4
	Maximum		4.0	77.3	96.0	950.1		9.3	75.6	88.3	954.4
	Average	74	1.8	65.5	80.4	947.9	126	2.1	65.9	74.4	952.2
May 31, 2023	Minimum		0.6	55.4	45.6	948.6		0.2	56.0	46.6	952.9
	Maximum		2.8	81.8	93.0	951.2		4.2	80.1	86.0	955.5
	Average	79	1.5	67.9	70.3	950.0	104	1.6	67.6	67.8	954.2
June 1, 2023	Minimum		0.1	55.4	36.6	946.9		0.1	56.4	38.5	951.2
	Maximum		2.5	84.7	93.0	951.3		4.6	81.8	83.8	955.6
	Average	67	1.1	69.4	66.0	949.3	122	1.4	69.1	63.6	953.6
June 2, 2023	Minimum		0.1	55.4	30.3	944.1		0.2	55.7	28.8	948.4
	Maximum		3.9	84.8	91.1	948.6		5.0	83.4	83.3	952.8
	Average	77	1.4	70.8	60.3	946.5	116	2.0	70.9	57.5	950.8
June 3, 2023	Minimum		0.1	54.9	30.0	942.3		0.2	56.2	32.1	946.5
	Maximum		4.8	87.4	91.1	945.5		7.3	86.2	83.2	949.8
	Average	73	1.4	70.8	65.4	944.4	127	1.6	70.9	61.3	948.7
June 4, 2023	Minimum		0.1	59.2	43.5	943.5		0.1	59.8	44.7	947.8
	Maximum		3.2	86.4	91.0	945.9		4.7	84.6	82.0	950.2
	Average	83	1.6	71.5	69.7	944.9	125	1.7	71.4	66.4	949.2

Notes:

- Dash/Blank data records indicate no data is available for that interval
- Wind direction is a daily (24-hr) average value; with the origin of wind in degrees; clockwise from North calculated with vector averaging